

APPENDIX IV
Monitoring Report #8—March 2010

Children's Administration FY09 Informational Reports

Ratio of beds to children by subcategories:

- a. Caregivers with preferences/required equipment for specific age groups (infant, child, adolescent)
- b. Level of care: regular family foster care, enhanced family foster care, therapeutic foster care, congregate care, respite care

Data Source: FamLink

Last Month (June) of FY09

Ratio by Gender Preference	Region 1	Region 2	Region 3	Region 4	Region 5	Region 6	State
ratio beds/child - Both	2.30	2.15	2.28	2.50	2.32	2.23	2.29
ratio beds/child - Female	2.26	1.67	2.13	2.02	2.19	2.72	2.20
ratio beds/child - Male	1.63	2.64	1.91	2.09	1.96	1.76	1.90
ratio beds/child - Unspecified	0.50	0.00	1.40	1.00	0.40	0.00	0.67

Last Month (June) of FY09

Ratio by Age Group	Region 1	Region 2	Region 3	Region 4	Region 5	Region 6	State
ratio beds/child 0-5	2.25	2.14	2.34	2.47	2.28	2.25	2.28
ratio beds/child 6-11	2.18	2.09	2.21	2.40	2.25	2.17	2.21
ratio beds/child 12+	2.20	2.06	2.11	2.30	2.28	2.00	2.15

Last Month (June) of FY09

Ratio by Care Level	Region 1	Region 2	Region 3	Region 4	Region 5	Region 6	State
ratio beds/child - Lvl1	2.17	2.09	2.19	2.38	2.25	2.13	2.20
ratio beds/child - Lvl2	2.18	2.09	2.21	2.40	2.25	2.17	2.21
ratio beds/child - Lvl3	2.17	2.09	2.19	2.37	2.25	2.14	2.20
ratio beds/child - Lvl4	2.17	2.09	2.19	2.37	2.25	2.14	2.20
ratio beds/child - BRS	2.38	2.50	2.15	2.21	2.58	2.50	2.46
ratio beds/child - Respite	<i>respite is identified with the home that purchases the svc and not with the home that provides the svc</i>						

Percentage of foster homes remaining active 1,2,3,4,5 years after being licensed

Data Source: FamLink

Foster Home Counts	FY Licensed					
First Licensed Year	FY04	FY05	FY06	FY07	FY08	Grand Total
FY04	1617	1251	909	715	448	4940
FY05		1621	1188	908	747	4464
FY06			1615	1234	948	3797
FY07				1758	1326	3084
FY08					1438	1438

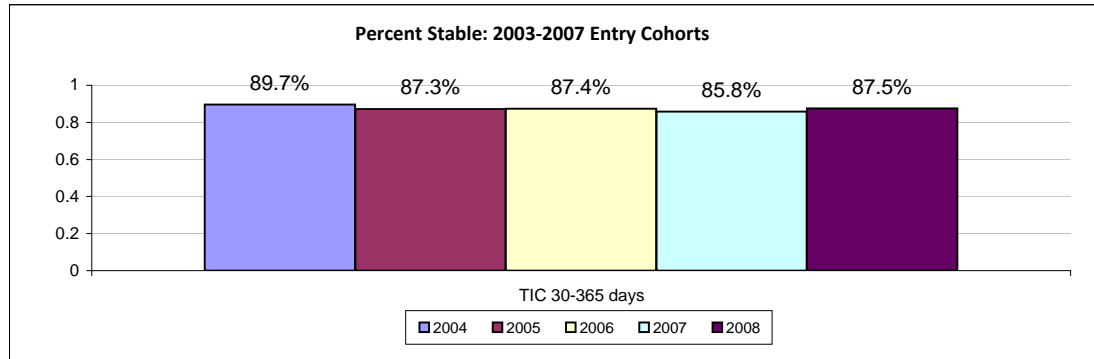
Foster Home Counts	FY Licensed					
First Licensed Year	FY04	FY05	FY06	FY07	FY08	Grand Total
FY04	100.0%	77.4%	56.2%	44.2%	27.7%	4940
FY05		100.0%	73.3%	56.0%	46.1%	4464
FY06			100.0%	76.4%	58.7%	3797
FY07				100.0%	75.4%	3084
FY08					100.0%	1438

Note: Counts of newly licensed homes from Famlink data are ~33% higher than similar counts from CAMIS. The difference between retention as evaluated in these data and retention as evaluated from CAMIS data is attributable to the apparent overcount of newly licensed homes in the FamLink data. The reason for the apparent overcount in Famlink data is being explored and undetermined on date of this report.

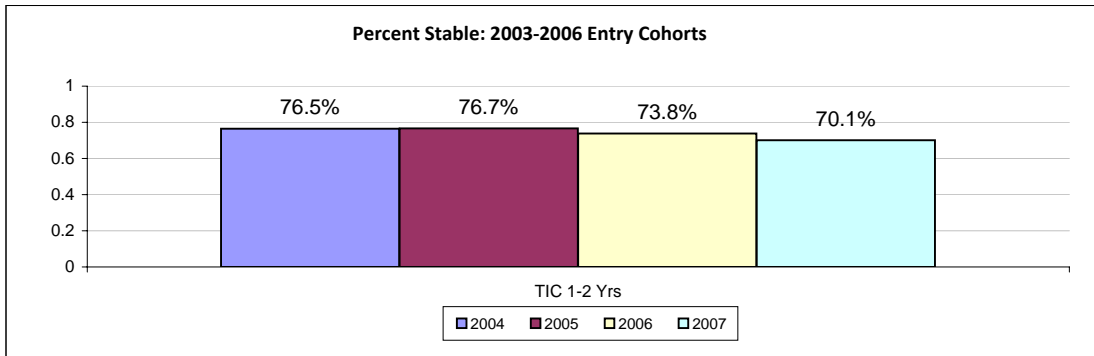
Report 1: Year by year data showing the percentage of youth entering care during the previous five fiscal years who experience 2 or fewer placements.

Data Source: Famlink

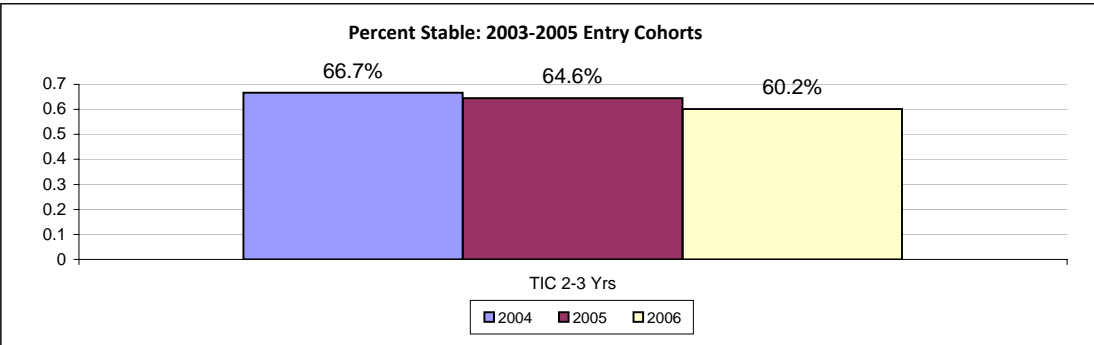
Time in Care (TIC) 30-365 days		Braam Measure		
Entry FY	Data	Stable	Unstable	Grand Total
2004	count	1120	129	1249
	percent	89.67%	10.33%	100.00%
2005	count	1272	185	1457
	percent	87.30%	12.70%	100.00%
2006	count	1321	191	1512
	percent	87.37%	12.63%	100.00%
2007	count	1574	261	1835
	percent	85.78%	14.22%	100.00%
2008	count	2555	364	2919
	percent	87.53%	12.47%	100.00%
Total count		7842	1130	8972
Total percent		87.41%	12.59%	100.00%



TIC 1-2 Yrs		Braam Measure		
Entry FY	Data	Stable	Unstable	Grand Total
2004	count	756	232	988
	percent	76.52%	23.48%	100.00%
2005	count	807	245	1052
	percent	76.71%	23.29%	100.00%
2006	count	734	261	995
	percent	73.77%	26.23%	100.00%
2007	count	1275	543	1818
	percent	70.13%	29.87%	100.00%
Total count		3572	1281	4853
Total percent		73.60%	26.40%	100.00%



TIC 2-3 Yrs		Braam Measure		
Entry FY	Data	Stable	Unstable	Grand Total
2004	count	494	247	741
	percent	66.67%	33.33%	100.00%
2005	count	490	269	759
	percent	64.56%	35.44%	100.00%
2006	count	841	557	1398
	percent	60.16%	39.84%	100.00%
Total count		1825	1073	2898
Total percent		62.97%	37.03%	100.00%

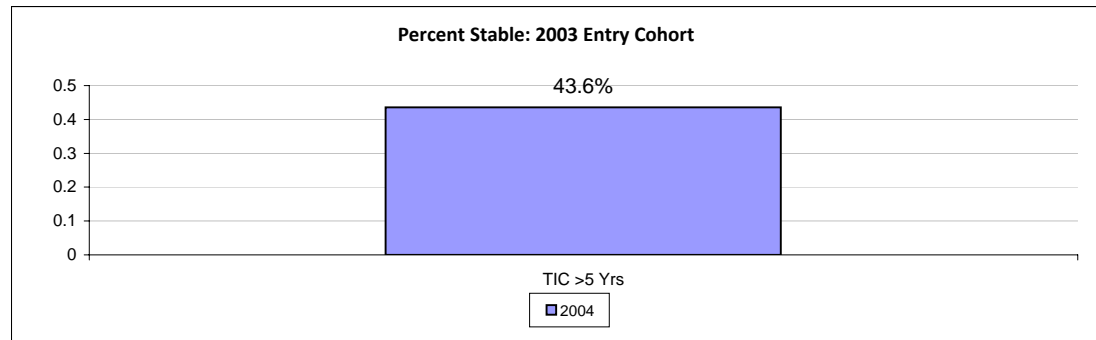
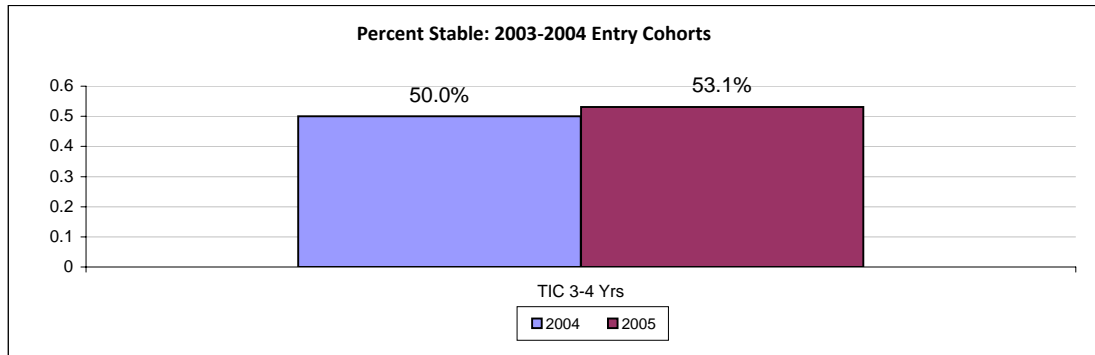


TIC 3-4 Yrs	Braam Measure
-------------	---------------

Entry FY	Data	Stable	Unstable	Grand Total
2004	count	189	189	378
	percent	50.00%	50.00%	100.00%
2005	count	389	343	732
	percent	53.14%	46.86%	100.00%
Total count		578	532	1110
Total percent		52.07%	47.93%	100.00%

TIC 4-5 Yrs		Braam Measure		
Entry FY	Data	Stable	Unstable	Grand Total
2004	count	177	221	398
	percent	44.47%	55.53%	100.00%
Total count		177	221	398
Total percent		44.47%	55.53%	100.00%

TIC >5 Yrs		Braam Measure		
Entry FY	Data	Stable	Unstable	Grand Total
2004	count	109	141	250
	percent	43.60%	56.40%	100.00%
Total count		109	141	250
Total percent		43.60%	56.40%	100.00%



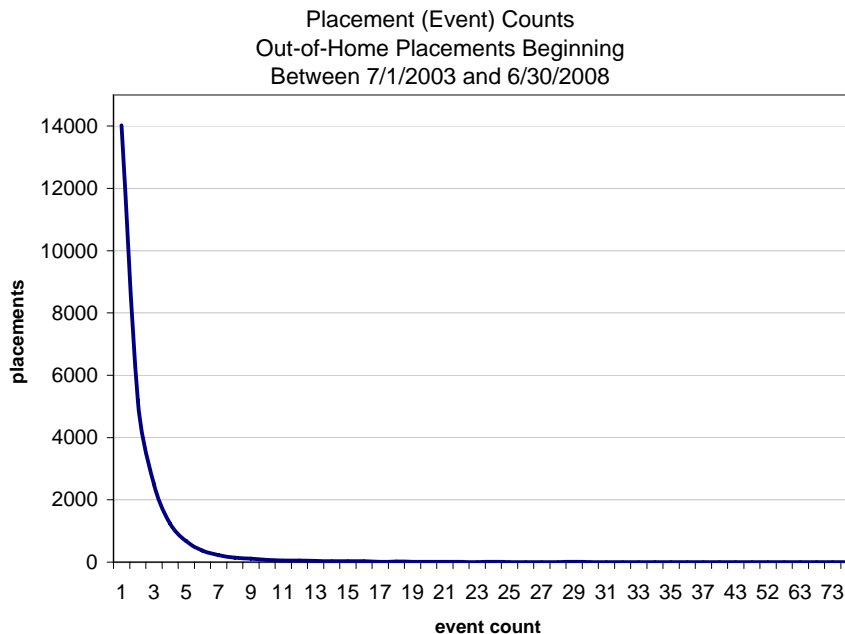
Report 2: Frequency report showing the number of children experiencing multiple placements, by number of placements beginning FY04 - FY08

Data Source: Famlink

median events = 1

average events = 1.96

Placement Count	Data	Total
1	count percent	14023 100.0%
2	count percent	5197 100.0%
3	count percent	2514 100.0%
4	count percent	1236 100.0%
5	count percent	681 100.0%
6	count percent	374 100.0%
7	count percent	230 100.0%
8	count percent	139 100.0%
9	count percent	109 100.0%
10	count percent	72 100.0%
11	count percent	52 100.0%
12	count percent	50 100.0%
13	count percent	43 100.0%
14	count percent	31 100.0%
15	count percent	27 100.0%
16	count percent	27 100.0%
17	count percent	11 100.0%
18	count percent	16 100.0%
19	count percent	15 100.0%
20	count percent	9 100.0%
21	count percent	11 100.0%
22	count percent	9 100.0%
23	count percent	4 100.0%
24	count percent	6 100.0%
25	count percent	4 100.0%
26	count percent	2 100.0%
27	count percent	4 100.0%
28	count percent	3 100.0%
29	count percent	6 100.0%



30	count percent	4 100.0%
31	count percent	1 100.0%
32	count percent	2 100.0%
33	count percent	4 100.0%
34	count percent	2 100.0%
35	count percent	2 100.0%
36	count percent	2 100.0%
37	count percent	2 100.0%
39	count percent	1 100.0%
43	count percent	1 100.0%
46	count percent	1 100.0%
52	count percent	1 100.0%
61	count percent	1 100.0%
63	count percent	1 100.0%
69	count percent	1 100.0%
73	count percent	1 100.0%
75	count percent	1 100.0%
Total count		24933
Total percent		100.0%

Percentage of caseworkers with caseloads at or below 18.0 by office

Data Source: CAMIS

Note: Open Worker Assignments Weighted: .36 Guardianship and Payment Only Cases, .5 Courtesy Supervision and 1.3 ICW Cases. All other worker assignments are 1 case.

Region	Office Name	Data	(a) 18 Cases or Fewer	(b) Over 18 Cases	Total
1	Clarkston	Number of Workers	5		5
		% of Workers	100.00%	0.00%	100.00%
	Colfax	Number of Workers	6		6
		% of Workers	100.00%	0.00%	100.00%
	Colville	Number of Workers	6	3	9
		% of Workers	66.67%	33.33%	100.00%
	Ferry County/Republic	Number of Workers	2	1	3
		% of Workers	66.67%	33.33%	100.00%
	Lincoln County (Spokane/Lincoln Co.)	Number of Workers	2		2
		% of Workers	100.00%	0.00%	100.00%
	Moses Lake	Number of Workers	5	9	14
		% of Workers	35.71%	64.29%	100.00%
	Newport (Pend Oreille DCFS Office)	Number of Workers	6		6
		% of Workers	100.00%	0.00%	100.00%
	Omak	Number of Workers	7	1	8
		% of Workers	87.50%	12.50%	100.00%
	Spokane DCFS Office	Number of Workers	55	40	95
		% of Workers	57.89%	42.11%	100.00%
Wenatchee	Number of Workers	12	3	15	
	% of Workers	80.00%	20.00%	100.00%	
1 Number of Workers			106	57	163
1 % of Workers			65.03%	34.97%	100.00%
2	Ellensburg	Number of Workers	6	1	7
		% of Workers	85.71%	14.29%	100.00%
	Goldendale	Number of Workers	5		5
		% of Workers	100.00%	0.00%	100.00%
	Region 2 Office	Number of Workers	1	7	8
		% of Workers	12.50%	87.50%	100.00%
	Sunnyside DCFS	Number of Workers	5	3	8
		% of Workers	62.50%	37.50%	100.00%
	Toppenish	Number of Workers	10	5	15
		% of Workers	66.67%	33.33%	100.00%
	Tri Cities	Number of Workers	20	19	39
		% of Workers	51.28%	48.72%	100.00%
	Walla Walla	Number of Workers	9	1	10
		% of Workers	90.00%	10.00%	100.00%
	White Salmon	Number of Workers	2		2
		% of Workers	100.00%	0.00%	100.00%
	Yakima	Number of Workers	14	14	28
		% of Workers	50.00%	50.00%	100.00%
2 Number of Workers			72	50	122
2 % of Workers			59.02%	40.98%	100.00%

3	Bellingham	Number of Workers	25	8	33
		% of Workers	75.76%	24.24%	100.00%
	Everett	Number of Workers	28	6	34
		% of Workers	82.35%	17.65%	100.00%
	Friday Harbor	Number of Workers	2		2
		% of Workers	100.00%	0.00%	100.00%
	Lynnwood	Number of Workers	16		16
		% of Workers	100.00%	0.00%	100.00%
	Mount Vernon	Number of Workers	22	6	28
		% of Workers	78.57%	21.43%	100.00%
	Oak Harbor	Number of Workers	10		10
		% of Workers	100.00%	0.00%	100.00%
	Reg 3 Lummi Tribe	Number of Workers	9		9
		% of Workers	100.00%	0.00%	100.00%
Region 3 Office	Number of Workers	4	9	13	
	% of Workers	30.77%	69.23%	100.00%	
Skyvalley	Number of Workers	10	2	12	
	% of Workers	83.33%	16.67%	100.00%	
Smokey Point	Number of Workers	10	12	22	
	% of Workers	45.45%	54.55%	100.00%	
3 Number of Workers			136	43	179
3 % of Workers			75.98%	24.02%	100.00%
4	King Centralized Services - RO4	Number of Workers	10	24	34
		% of Workers	29.41%	70.59%	100.00%
	King East DCFS	Number of Workers	9	7	16
		% of Workers	56.25%	43.75%	100.00%
	King South DCFS	Number of Workers	30	1	31
		% of Workers	96.77%	3.23%	100.00%
	King West DCFS	Number of Workers	41	3	44
		% of Workers	93.18%	6.82%	100.00%
	Martin Luther King Jr Office	Number of Workers	26	5	31
		% of Workers	83.87%	16.13%	100.00%
	Office of Indian Child Welfare - RO4	Number of Workers	11	11	22
		% of Workers	50.00%	50.00%	100.00%
4 Number of Workers			127	51	178
4 % of Workers			71.35%	28.65%	100.00%
5	Bremerton	Number of Workers	28	8	36
		% of Workers	77.78%	22.22%	100.00%
	Tacoma	Number of Workers	42	67	109
		% of Workers	38.53%	61.47%	100.00%
5 Number of Workers			70	75	145
5 % of Workers			48.28%	51.72%	100.00%
6	Aberdeen	Number of Workers	4	10	14
		% of Workers	28.57%	71.43%	100.00%
	Centralia	Number of Workers	13	4	17
		% of Workers	76.47%	23.53%	100.00%
	Forks	Number of Workers	5		5
		% of Workers	100.00%	0.00%	100.00%

Kelso	Number of Workers	14	8	22
	% of Workers	63.64%	36.36%	100.00%
Long Beach DCFS	Number of Workers	4		4
	% of Workers	100.00%	0.00%	100.00%
Olympia DCFS (Tumwater)	Number of Workers	26	7	33
	% of Workers	78.79%	21.21%	100.00%
Port Angeles	Number of Workers	8	5	13
	% of Workers	61.54%	38.46%	100.00%
Port Townsend	Number of Workers	6		6
	% of Workers	100.00%	0.00%	100.00%
R6 License Out of Home	Number of Workers	1		1
	% of Workers	100.00%	0.00%	100.00%
Reg 6 Quinault Tribe	Number of Workers		1	1
	% of Workers	0.00%	100.00%	100.00%
Shelton	Number of Workers	12	2	14
	% of Workers	85.71%	14.29%	100.00%
South Bend	Number of Workers	3	1	4
	% of Workers	75.00%	25.00%	100.00%
Stevenson	Number of Workers	4		4
	% of Workers	100.00%	0.00%	100.00%
Vancouver	Number of Workers	41	14	55
	% of Workers	74.55%	25.45%	100.00%
6 Number of Workers		141	52	193
6 % of Workers		73.06%	26.94%	100.00%
Total Number of Workers		652	328	980
Total % of Workers		66.53%	33.47%	100.00%

Percentage of children placed in relative placements on 6/30/2009

Source: Famlink Relative/Non-Relative Report (Run 11/27/09 and filtered for custody = DCFS or closed)

	Relative	Licensed- Non Relative	Total
Region 1	483	901	1384
Region 2	369	665	1034
Region 3	735	834	1569
Region 4	588	892	1480
Region 5	672	902	1574
Region 6	489	984	1473
Grand Total	3336	5178	8514
Percent	39.2%	60.8%	100.0%

Percentage of children placed in foster homes licensed for the age of the child (on last day of FY09)

Source: Famlink

		REGION						
LICENSED FOR CHILD AGE?	Data	1	2	3	4	5	6	Grand Total
YES	COUNT	888	682	608	552	917	946	4593
	PERCENT	97.9%	98.3%	97.0%	97.5%	99.3%	98.0%	98.1%
NO	COUNT	19	12	19	14	6	19	89
	PERCENT	2.1%	1.7%	3.0%	2.5%	0.7%	2.0%	1.9%
Total Count of ID_PRSN		907	694	627	566	923	965	4682
Total Count of ID_PRSN2		100.0%	100.0%	100.0%	100.0%	100.0%	100.0%	100.0%

Percentage of children with completed CHET screens within 45 and 60 days of entry into care

Data Source: CHET database

		Region 1	Region 2	Region 3	Region 4	Region 5	Region 6	State
% <=45 days	<=45 days	225	182	210	211	221	236	1285
	% <=45 days	83.0%	88.3%	81.4%	76.4%	63.0%	81.1%	77.7%
	Total	271	206	258	276	351	291	1653

		Region 1	Region 2	Region 3	Region 4	Region 5	Region 6	State
% <=60 days	<=60 days	234	193	236	241	262	249	1415
	% <=60 days	86.3%	93.7%	91.5%	87.3%	74.6%	85.6%	85.6%
	Total	271	206	258	276	351	291	1653

FY08 - Days from Placement Date to EPSDT Screening Date

Data Sources: CAMIS placement records and HRSA/EPSDT claims/encounter records from RDA

		Region						
+ -30	Data	1	2	3	4	5	6	Grand Total
Yes	count	423	251	366	311	337	402	2090
	percent	43.7%	43.3%	47.5%	44.1%	42.1%	46.0%	44.5%
No	count	545	329	405	395	463	471	2608
	percent	56.3%	56.7%	52.5%	55.9%	57.9%	54.0%	55.5%
Total count		968	580	771	706	800	873	4698
Total percent		100.0%	100.0%	100.0%	100.0%	100.0%	100.0%	100.0%

		Region						
+ -45	Data	1	2	3	4	5	6	Grand Total
Yes	count	511	334	457	403	426	529	2660
	percent	52.8%	57.6%	59.3%	57.1%	53.3%	60.6%	56.6%
No	count	457	246	314	303	374	344	2038
	percent	47.2%	42.4%	40.7%	42.9%	46.8%	39.4%	43.4%
Total count		968	580	771	706	800	873	4698
Total percent		100.0%	100.0%	100.0%	100.0%	100.0%	100.0%	100.0%

		Region						
+ -60	Data	1	2	3	4	5	6	Grand Total
Yes	count	590	371	514	452	483	577	2987
	percent	61.0%	64.0%	66.7%	64.0%	60.4%	66.1%	63.6%
No	count	378	209	257	254	317	296	1711
	percent	39.0%	36.0%	33.3%	36.0%	39.6%	33.9%	36.4%
Total count		968	580	771	706	800	873	4698
Total percent		100.0%	100.0%	100.0%	100.0%	100.0%	100.0%	100.0%

		Region						
+ -90	Data	1	2	3	4	5	6	Grand Total
Yes	count	677	413	561	504	531	636	3322
	percent	69.9%	71.2%	72.8%	71.4%	66.4%	72.9%	70.7%
No	count	291	167	210	202	269	237	1376
	percent	30.1%	28.8%	27.2%	28.6%	33.6%	27.1%	29.3%
Total count		968	580	771	706	800	873	4698
Total percent		100.0%	100.0%	100.0%	100.0%	100.0%	100.0%	100.0%

Percentage of children ages 0-60 months with completed developmental screens within 30, 45 and 60 days of entry into care

Data Source: CHET database

		Region 1	Region 2	Region 3	Region 4	Region 5	Region 6	State
% <=30 days	<=30days	140	92	135	115	151	142	775
	% <=30 days	83.8%	98.9%	97.8%	92.7%	96.8%	96.6%	93.9%
	Total	167	93	138	124	156	147	825

		Region 1	Region 2	Region 3	Region 4	Region 5	Region 6	State
% <=45 days	<=45days	152	92	135	119	152	144	794
	% <=45 days	91.0%	98.9%	97.8%	96.0%	97.4%	98.0%	96.2%
	Total	167	93	138	124	156	147	825

		Region 1	Region 2	Region 3	Region 4	Region 5	Region 6	State
% <=60 days	<=60days	157	92	135	122	153	146	805
	% <=60 days	94.0%	98.9%	97.8%	98.4%	98.1%	99.3%	97.6%
	Total	167	93	138	124	156	147	825

Percentage of children ages 6-18 years with completed emotional/behavioral screens within 30, 45 and 60 days of entry into care

Data Source: CHET database

		Region 1	Region 2	Region 3	Region 4	Region 5	Region 6	State
% <=30 days	<=30days	219	197	242	242	302	265	1467
	% <=30 days	80.8%	95.6%	95.3%	89.0%	87.0%	92.3%	89.6%
	Total	271	206	254	272	347	287	1637

		Region 1	Region 2	Region 3	Region 4	Region 5	Region 6	State
% <=45 days	<=45days	238	198	244	256	314	270	1520
	% <=45 days	87.8%	96.1%	96.1%	94.1%	90.5%	94.1%	92.9%
	Total	271	206	254	272	347	287	1637

		Region 1	Region 2	Region 3	Region 4	Region 5	Region 6	State
% <=60 days	<=60days	244	200	245	263	314	273	1539
	% <=60 days	90.0%	97.1%	96.5%	96.7%	90.5%	95.1%	94.0%
	Total	271	206	254	272	347	287	1637

Percentage of school-aged children for whom educational records were received within 30, 45 and 60 days of entry into care

Data Source: CHET database

		Region 1	Region 2	Region 3	Region 4	Region 5	Region 6	State
% <=30 days	<=30days	70	87	84	106	123	110	580
	% <=30 days	76.1%	91.6%	84.0%	77.4%	73.7%	86.6%	80.8%
	Total	92	95	100	137	167	127	718

		Region 1	Region 2	Region 3	Region 4	Region 5	Region 6	State
% <=45 days	<=45days	75	91	89	117	133	113	618
	% <=45 days	81.5%	95.8%	89.0%	85.4%	79.6%	89.0%	86.1%
	Total	92	95	100	137	167	127	718

		Region 1	Region 2	Region 3	Region 4	Region 5	Region 6	State
% <=60 days	<=60days	76	91	89	127	138	113	634
	% <=60 days	82.6%	96.6%	90.0%	93.4%	83.1%	89.6%	88.4%
	Total	92	95	100	137	167	127	718

Percentage of children with mental health needs adequately addressed

Data Source: Case Review

Item 23:
Mental Health – Out of Home Children
July 2008 – June 2009

Region 1	Region 2	Region 3	Region 4	Region 5	Region 6	Statewide
85%	100%	81%	96%	81%	92%	89%
20 cases	10 cases	27 cases	56 cases	26 cases	52 cases	191 cases

Percentage of licensed caregivers who meet the in-service training requirement of 36 hrs at the time of license renewal

Source: FamLink

		Region						
Inservice Hrs	Data	1	2	3	4	5	6	Grand Total
>=36	count	86	34	48	37	50	63	318
	percent	67.7%	63.0%	53.3%	45.1%	53.2%	55.8%	56.8%
<36	count	41	20	42	45	44	50	242
	percent	32.3%	37.0%	46.7%	54.9%	46.8%	44.2%	43.2%
Total count		127	54	90	82	94	113	560
Total percent		100.0%	100.0%	100.0%	100.0%	100.0%	100.0%	100.0%

Percentage of licensed caregivers receiving annual assessment and development plans

Source: DLR

DLR compliance with Braam requirements for annual assessments of foster parents. Foster families who have been licensed for over one year were identified as requiring an annual assessment. These foster families received a self-assessment in April of 2009. Those families returning the assessment received an annual development plan from the licenser, after review of the self-assessment, available social worker feedback, and review of the history of the family.

Region	Number of families sent Self-Assessments	Number of families returning Self-Assessments	Number receiving Annual Development Plans	Percent receiving Annual Development Plans
1	584	245	245	42.0%
2	290	105	105	36.2%
3	550	157	157	28.5%
4	285	69	69	24.2%
5	261	142	142	54.4%
6	596	255	255	42.8%
Total	2566	833	833	32.5%

Number of children experiencing more than two placements within a 48 hour period

Source: FamLink

Evaluation of FamLink placement records for FY09 reveal no youth meeting the definition of repeated daily stays.

Percent of FY09 Social Worker Visits >40 Days Apart

Data Source: Famlink

Table 1	Region 1	Region 2	Region 3	Region 4	Region 5	Region 6	Statewide Total
Number of Children in Care	2,268	1,507	2,526	2,064	2,148	2,258	12,771
Total Number of Months of Care	18,997	12,787	23,306	18,543	18,066	19,417	111,116
Total Number of Months Child was Compliant with SW Visit	9,464	7,317	15,147	10,490	10,530	11,250	64,198
Total Number of visits Within 40 Days	5,019	4,131	9,873	6,143	6,034	6,581	37,781
% Within 40 Days	53.0%	56.5%	65.2%	58.6%	57.3%	58.5%	58.9%
% >40 Days	47.0%	43.5%	34.8%	41.4%	42.7%	41.5%	41.1%

Source: Famlink (10/22/09 run date). Numbers reported are actual visits documented in Famlink or converted from CAMIS documentation

Characteristics of the alleged victimization

Data Source: Famlink

Victims in DLR Investigations Completed During FY09 With Foster Parents or Staff as Subjects (duplicated by Region)

GENDER				
REGION	Data	Female	Male	Grand Total
1	count	60	77	137
	percent	43.8%	56.2%	100.0%
2	count	74	75	149
	percent	49.7%	50.3%	100.0%
3	count	41	51	92
	percent	44.6%	55.4%	100.0%
4	count	60	56	116
	percent	51.7%	48.3%	100.0%
5	count	37	66	103
	percent	35.9%	64.1%	100.0%
6	count	49	62	111
	percent	44.1%	55.9%	100.0%
Total count		321	387	708
Total percent		45.3%	54.7%	100.0%

RACE								
REGION	Data	African American	Asian/PI	Hispanic	Native American	White	Unknown	Grand Total
1	count	9		10	23	94	1	137
	percent	6.6%	0.0%	7.3%	16.8%	68.6%	0.7%	100.0%
2	count	13	2	30	39	64	1	149
	percent	8.7%	1.3%	20.1%	26.2%	43.0%	0.7%	100.0%
3	count	7	2	9	15	58	1	92
	percent	7.6%	2.2%	9.8%	16.3%	63.0%	1.1%	100.0%
4	count	42	2	10	21	39	2	116
	percent	36.2%	1.7%	8.6%	18.1%	33.6%	1.7%	100.0%
5	count	11	1	8	18	65		103
	percent	10.7%	1.0%	7.8%	17.5%	63.1%	0.0%	100.0%
6	count	15		8	24	62	2	111
	percent	13.5%	0.0%	7.2%	21.6%	55.9%	1.8%	100.0%
Total count		97	7	75	140	382	7	708
Total percent		13.7%	1.0%	10.6%	19.8%	54.0%	1.0%	100.0%

Victims in DLR Investigations Completed During FY09 With Foster Parents or Staff as Subjects (duplicated by Region and placement location at time of report)

		Placement Type				Grand Total
REGION	Data	Licensed Foster Home	Unlicensed Relative	BRS Group or Foster Home	Other	
1	count	113	6	16	6	141
	percent	80.1%	4.3%	11.3%	4.3%	100.0%
2	count	129		18	6	153
	percent	84.3%	0.0%	11.8%	3.9%	100.0%
3	count	82	2	6	4	94
	percent	87.2%	2.1%	6.4%	4.3%	100.0%
4	count	75	4	31	7	117
	percent	64.1%	3.4%	26.5%	6.0%	100.0%
5	count	89	6	1	7	103
	percent	86.4%	5.8%	1.0%	6.8%	100.0%
6	count	99	1	3	10	113
	percent	87.6%	0.9%	2.7%	8.8%	100.0%
Total count		587	19	75	40	721
Total percent		81.4%	2.6%	10.4%	5.5%	100.0%

Characteristics of the investigation

Data Source: Famlink

Findings for DLR Investigations Completed During FY09 With Foster Parents or Staff as Alleged Perpetrator (Subjects)

Staff Perpetrator		REGION						
FINDING	Data	1	2	3	4	5	6	Grand Total
(1) Founded	count	1	1					2
	percent	9.1%	12.5%	0.0%	0.0%	0.0%	0.0%	3.0%
(2) Unfounded	count	8	7	4	24	7	3	53
	percent	72.7%	87.5%	100.0%	77.4%	77.8%	100.0%	80.3%
(2) Other	count	2			7	2		11
	percent	18.2%	0.0%	0.0%	22.6%	22.2%	0.0%	16.7%
Total count		11	8	4	31	9	3	66
Total percent		100.0%	100.0%	100.0%	100.0%	100.0%	100.0%	100.0%

Foster Parent Perpetrator		REGION						
FINDING	Data	1	2	3	4	5	6	Grand Total
(1) Founded	count	5	14	5	4	4	9	41
	percent	4.5%	12.7%	6.8%	5.3%	5.3%	8.9%	7.5%
(2) Unfounded	count	96	83	64	63	67	84	457
	percent	85.7%	75.5%	87.7%	82.9%	89.3%	83.2%	83.5%
(2) Other	count	11	13	4	9	4	8	49
	percent	9.8%	11.8%	5.5%	11.8%	5.3%	7.9%	9.0%
Total count		112	110	73	76	75	101	547
Total percent		100.0%	100.0%	100.0%	100.0%	100.0%	100.0%	100.0%

		REGION						
Alleged Perpetrator	Data	1	2	3	4	5	6	Grand Total
Foster Parent Perpetrator	count	123	136	90	88	96	108	641
	Avg Age	8.7	9.5	8.5	9.7	7.9	9.6	9.0
Staff Perpetrator	count	15	16	4	34	7	3	79
	Avg Age	13.9	15.7	12.8	13.3	13.4	16.0	14.0
Total count		138	152	94	122	103	111	720
Total Avg Age		9.2	10.2	8.7	10.7	8.3	9.8	9.6

Percentage of children in care who have run away multiple times during the fiscal year, disaggregated by the number of running events

Data Source: FamLink

Person Count	Region								
RUN COUNT	1	2	3	4	5	6	Grand Total	% of Total	
1	58	56	84	132	79	102	511	3.4%	one run
2	4	15	6	17	11	15	68	0.4%	two runs
3	4	1	2	1	2		10	0.1%	three runs
4		2		1			3	0.0%	four runs
5			1				1	0.0%	five runs
6				1			1	0.0%	6 runs
Total With Runs	66	74	93	152	92	117	594	3.9%	
No Runs	2643	1892	2852	2611	2544	2617	15159	100.0%	

Average time on the run for children in care on the last day of the FY

Data Source: FamLink

	Region						
	1	2	3	4	5	6	Grand Total
Person Count	50	51	65	103	66	90	425
Average Days	46.6	68.3	57.3	56.1	52.3	54.7	55.8

**Foster Youth Enrolled in 2007-2008 School Year With
Placement Event Dates and Enrollment Dates Between 9/1/2007 and 5/30/2008
All Enrollment Dates Within 3 Days of Placement Event (Removals and Moves)**

Data Source: OSPI Attendance Records

Region	Data	Timely Enrollment		Grand Total
		Yes	No	
1	count	315	43	358
	percent	88.0%	12.0%	100.0%
2	count	127	68	195
	percent	65.1%	34.9%	100.0%
3	count	327	61	388
	percent	84.3%	15.7%	100.0%
4	count	326	94	420
	percent	77.6%	22.4%	100.0%
5	count	358	73	431
	percent	83.1%	16.9%	100.0%
6	count	425	80	505
	percent	84.2%	15.8%	100.0%
Total count		1878	419	2297
Total percent		81.8%	18.2%	100.0%

Percentage of children at the age-appropriate grade level

Data Source: WSIPP Report

Graduating Class Year*

Region	2005	2006	2007	2008	2009	2010
1	93%	84%	93%	95%	93%	95%
2	91%	84%	90%	85%	89%	91%
3	79%	94%	93%	94%	94%	96%
4	93%	88%	94%	92%	90%	91%
5	94%	92%	92%	90%	89%	97%
6	87%	96%	91%	93%	96%	93%

*For youth in FC for 90 or more days during the school year

Age appropriate grade level = no repeated grade

Youth were identified as repeating a grade if:

- older than 15 at the start of grade 9
- older than 16 at the start of grade 10
- older than 17 at the start of grade 11
- older than 18 at the start of grade 12

Annual drop-out rate for high-school aged youth in foster care all year through high school

Data Source: WSIPP Report

		Region 1	Region 2	Region 3	Region 4	Region 5	Region 6	State
Annual Dropout Rate	2007-08 School Year	4.1%	5.6%	13.1%	11.5%	4.8%	6.6%	8.0%