

APPENDIX I

Addendum to Monitoring Report #9—November 2010

Children's Administration Monthly Informational Data

DSHS Children's Administration, Braam Settlement Agreement, Monthly Informational Performance Reports

Table of Contents

Wednesday, November 10, 2010

Informational Report	Braam Settlement Agreement Reference	Description
Caseload Size	Placement Stability, Goal 1, Outcome 3	Percentage of social workers providing services to one or more children in out of home care under CA Placement and Care Authority with caseloads at or below Council on Accreditation (COA) standards (18 child cases per worker).
Monthly Visits	<i>Alternative Measure:</i> Unsafe and Inappropriate Placements, Goal 1, Outcome 6	Percentage of children that receive a private and individual face-to-face health and safety visit from an assigned caseworker at least once during the calendar month, with no visit being more than 40 days after the previous visit.
CHET Screenings - Overall Completions	Mental Health, Goal 1, Outcome 2	Percentage of children in out-of-home care 30 days or longer that have a Child Health and Education Tracking (CHET) screen completed and documented within 30 days of entering care.
CHET Screenings - Physical Health Domain	Mental Health, Goal 1, Outcome 2	Percentage of children with a completed Early Periodic Screening Diagnosis and Treatment (EPSDT) exam within 30 days of entry into care.
CHET Screenings - Developmental Domain	Mental Health, Goal 1, Outcome 2	Percentage of children ages 0-60 months with a completed developmental screen within 30 days of entry into care.
CHET Screenings - Educational Domain	Mental Health, Goal 1, Outcome 2	Percentage of school-aged children for whom educational records are received within 30 days of entry into care.
CHET Screenings - Emotional/ Behavioral Domain	Mental Health, Goal 1, Outcome 2	Percentage of children with a completed Child Behavior Checklist within 30 days of entry into care.
CHET Screenings - Connections	Mental Health, Goal 1, Outcome 2	Percentage of children with a completed Connections domain within 30 days of entry into care.
Shared Planning Meeting Focused on CHET within 60 Days of Entry into Care	Mental Health, Goal 1, Outcome 3	Percentage of shared planning meeting (SPM) focusing on the CHET screening results that are held within 60 days of each child's entry into care.
Referral to Early Support for Infant and Toddlers (ESIT) Program within 2 Workdays	Mental Health, Goal 1, Outcome 4	Percentage of children age 3 and under in out-of-home care with identification of concerns about developmental delays from their CHET Screens that are referred to the Early Support for Infant and Toddlers (ESITP) Program within 2 workdays.
Youth Transition (Exit) Staffings	Services to Adolescents, Goal 2, Outcome 3	Percentage of multi-disciplinary staffing meeting that are held at least six months prior to a youth's exit from foster care to address issues related to their transition to independence.
Youth Runaway Counts	<i>Alternative Measure:</i> Services to Adolescents, Goal 3, Outcome 1	Count of youth under CA Placement and Care Authority that are identified on runaway status on the last day of the month.

Children's Administration

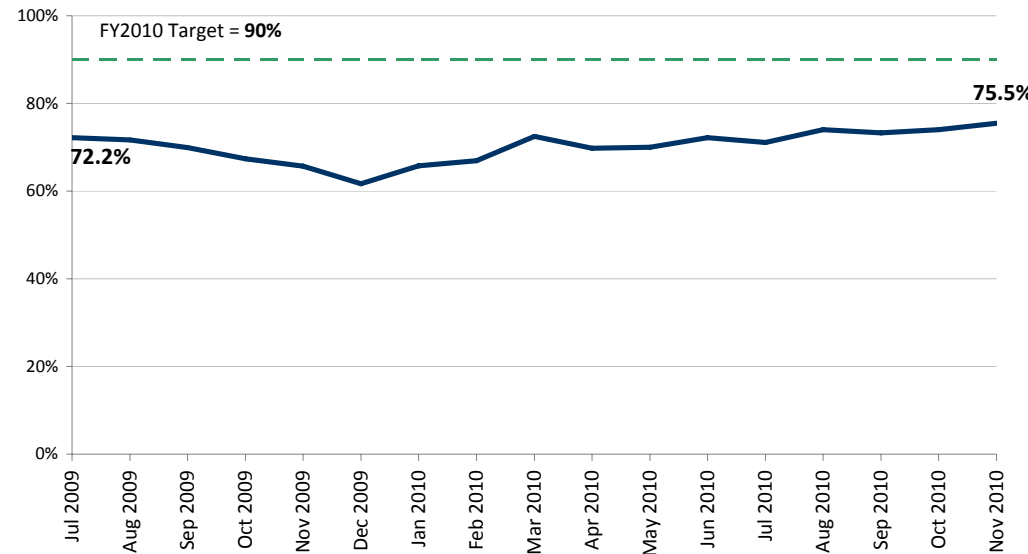
PERFORMANCE MEASURE

[TO DATA CHART](#)

Caseloads At or Below 18 Cases (Placement Stability, Goal 1, Outcome 3)

Social workers will have caseloads at or below Council on Accreditation (COA) standards (18 child cases per worker).

Statewide Average



SUMMARY

- Nov-2010 data shows 75.5% of social workers, who served at least one child in the Braam Class, had caseloads of 18 or fewer.
- The trend has been stable since July 2009. In comparison to previous fiscal years, performance has improved significantly from 50% in FY2008 and 65% in FY2009.
- There is some regional variation, ranging from a high of 82% in Region 4 to a low of 66% in Region 5.
- This measure counts workers who primarily serve children on dependency orders (Child and Family Welfare Services - CFWS) as well as other types of workers who only occasionally serve a child in the Braam class (i.e. CPS, FRS, and Voluntary Services).
- This data does not reflect the new methodology. The measure is complex due to difficulty creating algorithms that correspond to changing social workers and child populations each month and ensuring FamLink social worker case and child assignments are accurately documented.
- Caseloads are affected by children entering and leaving out-of-home care. A concentrated effort in FY2009 resulted in many permanent plans and progress is expected to slow somewhat. However, practice im

ACTION PLAN

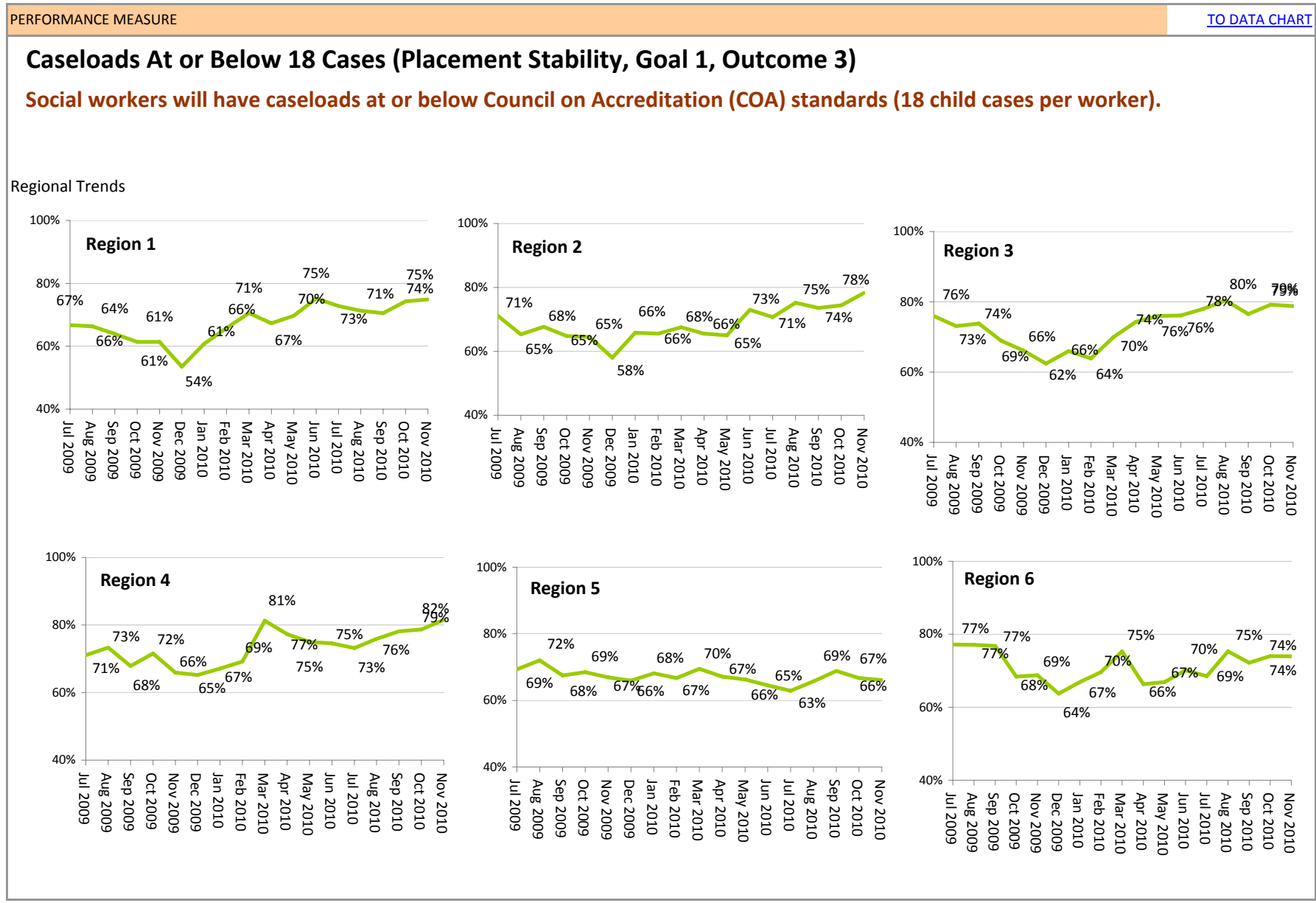
- Regional managers actively monitor caseloads and when indicated, m
- Continue FamLink data clean-up efforts, complete analysis to better u
- Continue efforts to safely place children in permanent homes, achieve
- Expand use of FTDM meetings to improve practice and better impact t
- Better engage and support relatives caring for dependent children.

DATA SOURCE: FamLink; supplied by Lee Doran, Lead Analyst, Children's Administration

MEASURE DEFINITION: Social workers will have caseloads at or below Council on Accreditation (COA) standards.

DATA NOTES: 1 This data should be considered estimates. 2 Changes over time in Famlink counts still represent the instability of the data during a continuing period of FamLink implementation/utilization.3 Counts of assignments and workload using more strict logic developed by CA results in lower caseload counts due to variation in assignment documentation and data clean up activities are in process to increase confidence in this data.4 The counts are point in time as of the first day of the report month.5 Compliance with this outcome requires the statewide benchmark to be met. In addition, no region's performance may be more than 10 percentage points lower than the statewide benchmark.

Children's Administration



Children's Administration

Caseloads At or Below 18 Cases (Placement Stability, Goal 1, Outcome 3)

Social workers will have caseloads at or below Council on Accreditation (COA) standards.

Measure definition	Percentage of social workers providing services to one or more children in out of home care under CA Placement and Care Authority with caseloads at or below Council on Accreditation (COA) standards (18 child cases per worker).
Data source	FamLink Run date 11-9-10 as of 11-1-10
Data supplier	Lee Doran, Lead Analyst, Children's Administration
Next update	December 2010
Frequency	Monthly
Data notes	<p>1 This data should be considered estimates.</p> <p>2 Changes over time in Famlink counts still represent the instability of the data during a continuing period of FamLink implementation/utilization.</p> <p>3 Counts of assignments using more strict logic developed by CA results in lower caseload counts due to variation in assignment documentation.</p> <p>4 The counts are point in time as of the first day of the report month.</p> <p>5 Compliance with this outcome requires the statewide benchmark to be met. In addition, no region's performance may be more than 10 percentage points lower than the statewide benchmark.</p>

DATA

DATE	Statewide	TARGET	Worker Count <18	Worker Count >18	Region 1	Region 2	Region 3	Region 4	Region 5	Region 6		
FY08	49.9%	80%	Not Currently Available		53%	54%	43%	50%	46%	53%		
FY09	65.0%	85%			64%	58%	75%	70%	46%	72%		
Jul 2009	72.2%	90%			67%	71%	76%	71%	69%	77%		
Aug 2009	71.7%	90%			66%	65%	73%	73%	72%	77%		
Sep 2009	69.9%	90%			64%	68%	74%	68%	68%	77%		
Oct 2009	67.4%	90%			61%	65%	69%	72%	69%	68%		
Nov 2009	65.7%	90%			61%	65%	66%	66%	67%	69%		
Dec 2009	61.7%	90%			54%	58%	62%	65%	66%	64%		
Jan 2010	65.8%	90%			615	319 (34.2%)	61%	66%	66%	67%	68%	67%
Feb 2010	66.9%	90%			636	315 (33.1%)	66%	66%	64%	69%	67%	70%
Mar 2010	72.5%	90%	668	253 (27.5%)	71%	68%	70%	81%	70%	75%		
Apr 2010	69.8%	90%	648	281 (30.2%)	67%	66%	74%	77%	67%	66%		
May 2010	70.0%	90%	657	282 (30%)	70%	65%	76%	75%	66%	67%		
Jun 2010	72.2%	90%	695	268 (27.8%)	75%	73%	76%	75%	65%	70%		
Jul 2010	71.1%	90%	690	281 (28.9%)	73%	71%	78%	73%	63%	69%		
Aug 2010	74.0%	90%	779	273 (26%)	71%	75%	80%	76%	66%	75%		
Sep 2010	73.3%	90%	763	278 (26.7%)	71%	74%	77%	78%	69%	72%		
Oct 2010	74.0%	90%	771	271 (26%)	74%	74%	79%	79%	67%	74%		
Nov 2010	75.5%	90%	762	247 (24.5%)	75%	78%	79%	82%	66%	74%		

Children's Administration

Caseloads At or Below 18 Cases (Placement Stability, Goal 1, Outcome 3)

Social workers will have caseloads at or below Council on Accreditation (COA) standards.

Measure definition	Percentage of social workers providing services to one or more children in out of home care under CA Placement and Care Authority with caseloads at or below Council on Accreditation (COA) standards (18 child cases per worker).
Data source	FamLink Run date 11-9-10 as of 11-1-10
Data supplier	Lee Doran, Lead Analyst, Children's Administration
Next update	December 2010
Frequency	Monthly
Data notes	<p>1 This data should be considered estimates.</p> <p>2 Changes over time in Famlink counts still represent the instability of the data during a continuing period of FamLink implementation/utilization.</p> <p>3 Counts of assignments using more strict logic developed by CA results in lower caseload counts due to variation in assignment documentation.</p> <p>4 The counts are point in time as of the first day of the report month.</p> <p>5 Compliance with this outcome requires the statewide benchmark to be met. In addition, no region's performance may be more than 10 percentage points lower than the statewide benchmark.</p>

DATA

Region	Worker Count <18	Worker Count >18	0 - 4 Cases	5 - 10 Cases	11 - 18 Cases	19 - 25 Cases	26 - 35 Cases	>35 Cases
Region 1	74.8%	25.2%	10.4% (17)	26.4% (43)	38.0% (62)	10.4% (17)	6.7% (11)	8.0% (13)
Region 2	78.3%	21.7%	5.4% (7)	28.7% (37)	44.2% (57)	12.4% (16)	6.2% (8)	3.1% (4)
Region 3	78.8%	21.2%	10.6% (19)	25.7% (46)	42.5% (76)	12.8% (23)	5% (9)	3.4% (6)
Region 4	81.6%	18.4%	12.8% (23)	20.7% (37)	48% (86)	7.3% (13)	6.7% (12)	4.5% (8)
Region 5	66.1%	33.9%	14.6% (25)	17% (29)	34.5% (59)	13.5% (23)	7.0% (12)	13.5% (23)
Region 6	73.9%	26.1%	12.2% (23)	22.3% (42)	39.4% (74)	10.1% (19)	12.2% (23)	3.7% (7)
State	75.5%	24.5%	11.3% (114)	23.2% (234)	41% (414)	11% (111)	7.4% (75)	6.0% (61)

Children's Administration

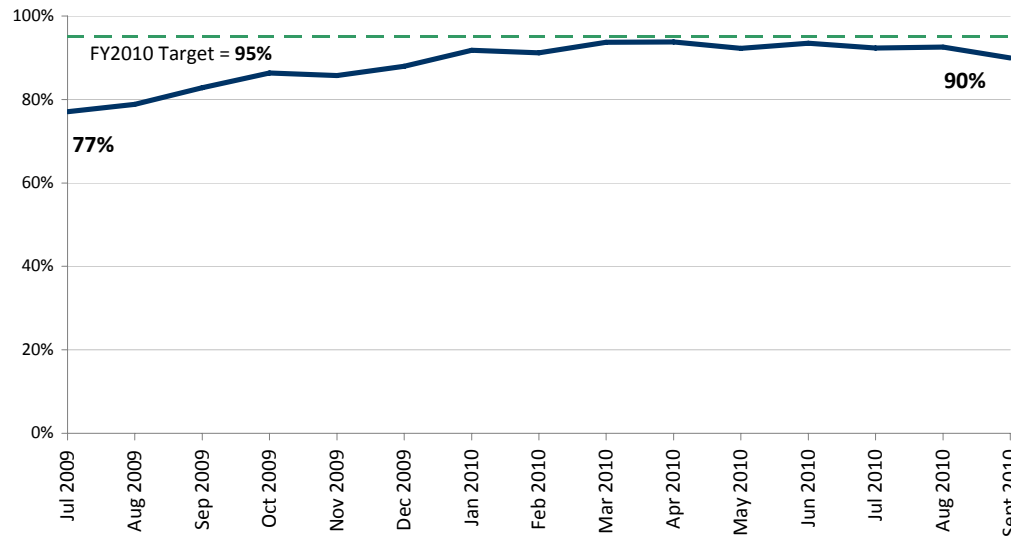
PERFORMANCE MEASURE

[TO DATA CHART](#)

Monthly Visits (Alternative Measure: Unsafe and Inappropriate Placements, Goal 1, Outcome 6)

Children will receive a private and individual face-to-face health and safety visit from an assigned caseworker at least once during the calendar month, with no visit being more than 40 days after the previous visit.

Statewide Average



SUMMARY

- In Oct-10, the Monthly Visit report was replaced with a new report using data from the Data Warehouse and is still being validated and refined (See data notes for additional information).
- 90 percent of children requiring health and safety visits were visited by their social worker during September 2010.
- Performance has improved significantly from 77% in July 2009 to a range of 90-94% in the past 6 months.
- The number of children requiring visits has increased while performance has improved.
- In September 2010, Region 3 met the 95% benchmark and Region 4 was within 1 percent of the target. In the last six months, Regions 2, 3, and 4 have met the benchmark. All regions show marked improvement during the past year.
- Recognition to Region 5 for making significant improvement in performance during FY2010 in spite of est. 20% increased workload.
- Data showing reasons for missed visits identified the following:
 - Social workers did not complete or unable to make visit
 - FamLink data integrity issues (e.g. visit coded incorrectly, legal status inaccurate, duplicate child)
 - Other states slow reporting visits when children are placed out of state through
 - Delay in social workers documenting visit occurred in FamLink
 - Children are on the run and cannot be located

• Conducting monthly visits with children in foster care is a critical practice

ACTION PLAN

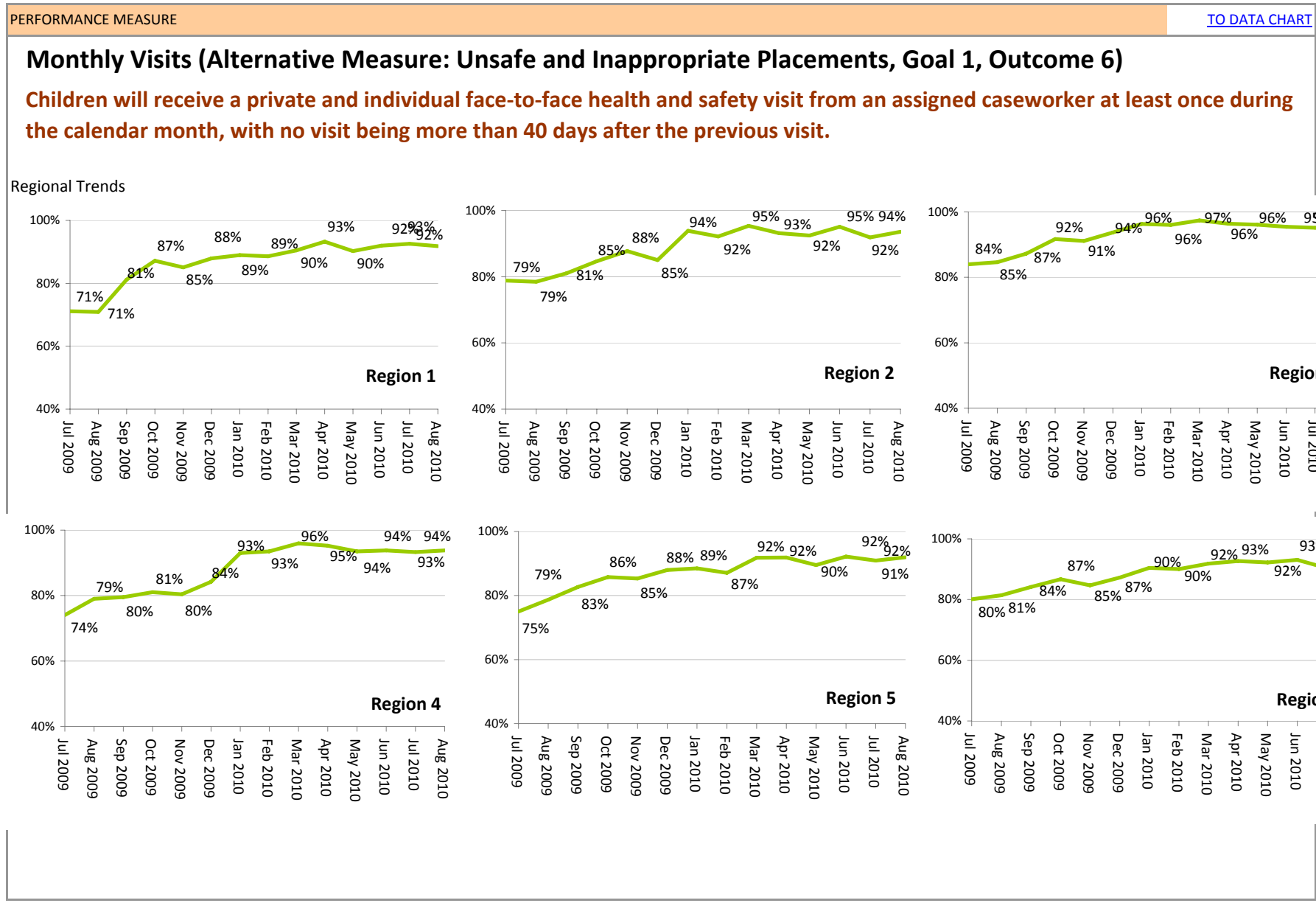
- Communicate performance monthly and follow up with regions, officials
- Identify and address reasons for visits not occurring.
- Complete report validation and refinement of logic used to produce 1

DATA SOURCE: FamLink Data Warehouse, Lee Doran, Lead Analyst, Children's Administration

MEASURE DEFINITION: Children will receive a private and individual face-to-face health and safety visit from an assigned caseworker at least once every calendar month, with no visit being more than 40 days after the previous visit.

DATA NOTES: 1 Population includes children in out of home placement under the age of 18, their placement was open during the entire month (in placement on the 1st day of the month and no discharge during the month), and in DCFS placement and care authority. 2 Performance reflects CA social worker visits and does not yet include "Visits by Other" in the count of compliance as reports to the Governor's office include. 3 Data for previous months is no longer routinely updated each month and reflects point in time FamLink documentation. 4 This data is a proxy measure for the Settlement Agreement outcome that measures the percent of children who were seen by the assigned social worker for a Health and Safety visit each month they were in a full month of care. 5 In Oct-10, the report was replaced with a new v

Children's Administration



Children's Administration

Monthly Visits (Alternative Measure: Unsafe and Inappropriate Placements, Goal 1, Outcome 6)

Children will receive a private and individual face-to-face health and safety visit from an assigned caseworker at least once during the calendar month, with no visit being more than 40 days after the previous visit.

Measure definition	Percentage of children that receive a private and individual face-to-face health and safety visit from an assigned caseworker at least once during the calendar month, with no visit being more than 40 days after the previous visit.
Data source	FamLink Run date 11/7/2010
Data supplier	Lee Doran, Lead Analyst, Children's Administration
Next update	December 2010
Frequency	Monthly
Data notes	<p>1 Population includes children in out of home placement under the age of 18, their placement was open during the entire month (in placement on the 1st day of the month and no discharge during the month), and in DCFS placement and care authority.</p> <p>2 Performance reflects CA social worker visits and does not yet include "Visits by Other" in the count of compliance as reports to the Governor's office include.</p> <p>3 Data for previous months is no longer routinely updated each month and reflects point in time FamLink documentation.</p> <p>4 This data is a proxy measure for the Settlement Agreement outcome that measures the percent of children who were seen by the assigned social worker for a Health and Safety visit each month they were in a full month of care.</p> <p>5 In Oct-10, the report was replaced with a new version using the Data Warehouse and the report methodology is being validated and refined. There was an increase of 1205 more children requiring a visit between August 2010 and September 2010. The new version of the report better accounts for dependent children at home (trial return home). The methodology was also recently corrected to include children identified as having visits with a phone location (non-compliant). A recent monthly review</p> <ul style="list-style-type: none"> • 42% (32 visits) were compliant (i.e. in person visit inaccurately coded as a phone visit and policy supports phone contact for youth in JRA facilities) • 39.5% (30 visits) were accurately identified as non-compliant • 18.5% (14 visits) the location and level of compliance was undetermined

DATA

DATE	Statewide Rate	TARGET	CA Social Worker Visits	Visits by Others	Attempted Visits	No Visits	Total Children Needing Visit	Region 1	Region 2	Region 3	Region 4	Region 5	Region 6
Jul 2009	77.1%	95%	5446	2.52% (178)	2.24% (158)	18.17% (1284)	7066	71%	79%	84%	74%	75%	80%
Aug 2009	78.9%	95%	5526	2.90% (203)	2.28% (160)	15.97% (1119)	7088	71%	79%	85%	79%	79%	81%
Sep 2009	82.8%	95%	5725	3.05% (211)	2.47% (171)	11.67% (807)	6914	81%	81%	87%	80%	83%	84%
Oct 2009	86.4%	95%	6016	2.97% (207)	2.23% (155)	8.44% (588)	6966	87%	85%	92%	81%	86%	87%
Nov 2009	85.7%	95%	5852	2.92% (199)	2.36% (161)	9.0% (614)	6826	85%	88%	91%	80%	85%	85%
Dec 2009	88.0%	95%	5963	2.92% (198)	1.33% (90)	7.80% (529)	6780	88%	85%	94%	84%	88%	87%
Jan 2010	91.8%	95%	6238	2.59% (176)	1.57% (107)	4.07% (277)	6798	89%	94%	96%	93%	89%	90%
Feb 2010	91.2%	95%	6334	2.37% (165)	1.86% (129)	4.62% (321)	6949	89%	92%	96%	93%	87%	90%
Mar 2010	93.8%	95%	6541	2.32% (162)	1.12% (78)	2.81% (196)	6977	90%	95%	97%	96%	92%	92%
Apr 2010	93.8%	95%	6699	2.53% (181)	1.25% (89)	2.44% (174)	7143	93%	93%	96%	95%	92%	93%
May 2010	92.3%	95%	6711	2.85% (207)	1.61% (117)	3.26% (237)	7272	90%	92%	96%	94%	90%	92%
Jun 2010	93.5%	95%	6911	2.14% (158)	1.38% (102)	2.98% (220)	7391	92%	95%	95%	94%	92%	93%
Jul 2010	92.3%	95%	6940	2.26% (170)	1.90% (143)	3.54% (266)	7519	93%	92%	95%	93%	91%	90%
Aug 2010	92.6%	95%	6942	2.47% (185)	1.60% (120)	3.37% (253)	7500	92%	94%	95%	94%	92%	90%
Sept 2010	90.0%	95%	7834	2.41% (210)	2.29% (199)	5.31% (462)	8705	87%	90%	95%	94%	89%	86%

Children's Administration

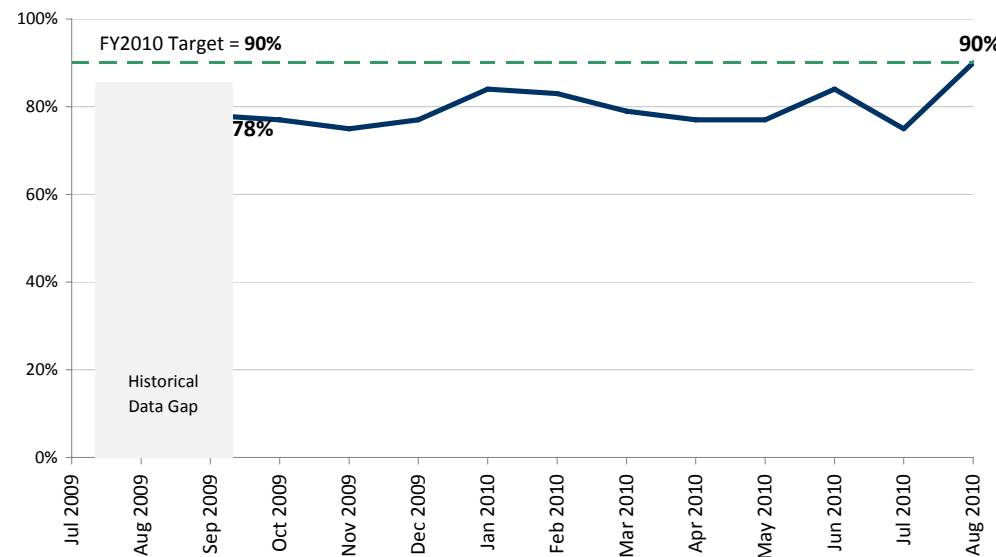
PERFORMANCE MEASURE

[TO DATA CHART](#)

CHET Screens - Overall Completions (Mental Health, Goal 1, Outcome 2)

Children in out-of-home care 30 days or longer will have a completed and documented Child Health and Education Tracking (CHET) Screen within 30 days of entering care.

Statewide Average



SUMMARY

- CA achieved the 90% benchmark in August 2010 for completing required CHET Screens within 30 days of a child entering out of home care. Every region also met the requirement to be within 10% of the benchmark. This is the first month the 90% benchmark was reached.
- Recognition to Regions 2 and 3 who achieved 100% performance, Region 4 who met the 90% benchmark, and Region 5 who improved performance by 37% in one month.
- In comparison to previous fiscal years, CA performance on this outcome has improved significantly (47% FY07, 63% FY08, and 64% FY09).
- The average number of days to complete CHET Screens has consistently been 26-27 days in the past 4 months.
- The number of children requiring a CHET screen increased from 355 in July 2010 to 395 in August 2010, however is less than the yearly highs reach in May 2010 (471) and June 2010 (462).
- Incomplete Physical Health domains was the most significant reason for CHET Screens not completed within 30 days due to health care providers not being able to provide an exam date within 30 days and delays in receiving exam results.

ACTION PLAN

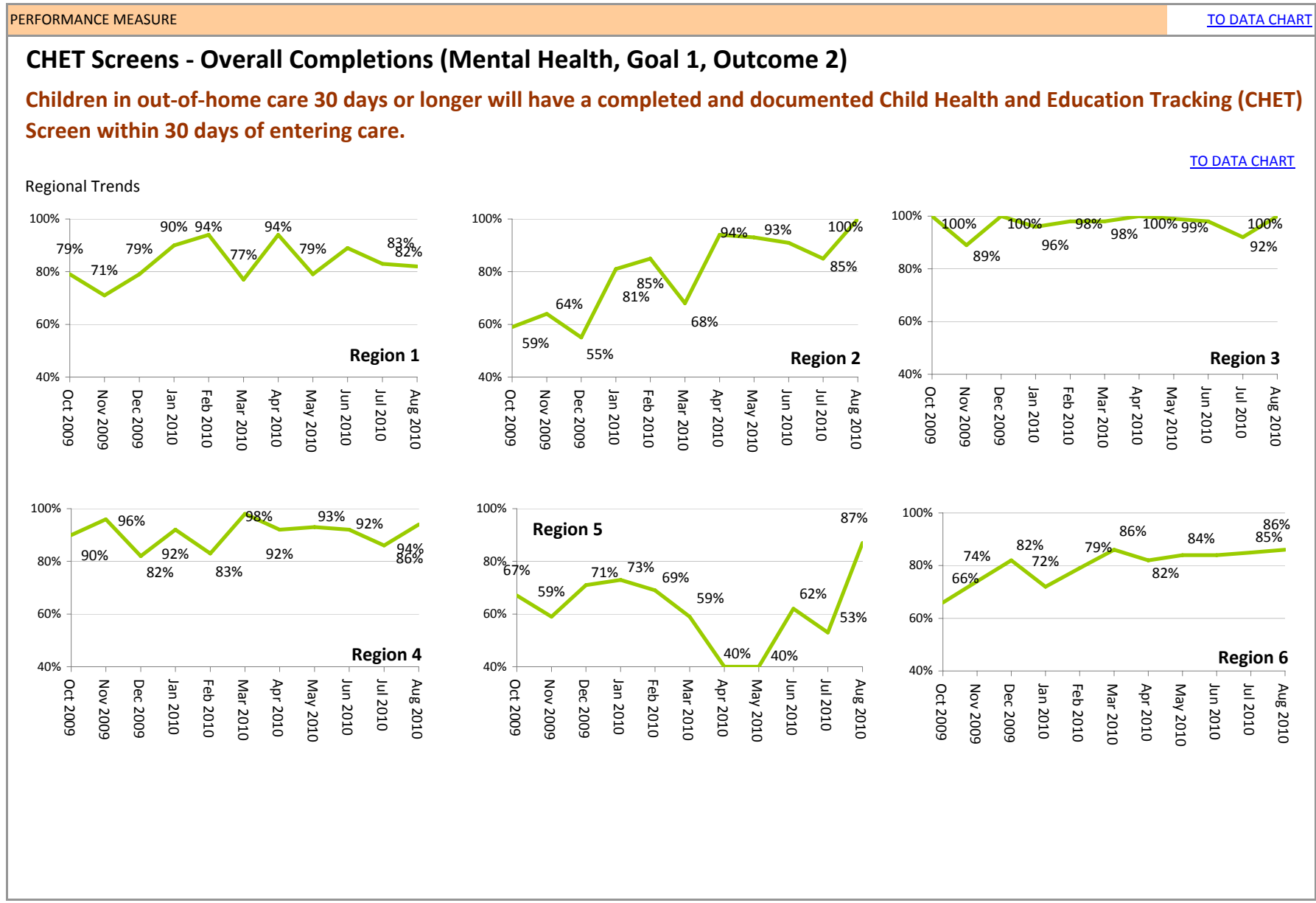
- Continue to conduct ongoing monthly review of reasons CHET Screens
- Identify health care providers that regularly do not provide timely resu
- Continue to partner with the MPA Fostering Well-Being Program to str

DATA SOURCE: Statewide CHET Database; supplied by Brenda Villarreal, Statewide CHET Program Manager

MEASURE DEFINITION: Children in out-of-home care 30 days or longer will have completed and documented Child Health and Education Track (CHET) screens within 30 days of entering care.

DATA NOTES: **1** Performance is based on children newly entering out of home care and meeting agreed upon criteria for a required CHET screen. **2** In order for a CHET Screen to be counted as complete, the Screening Report must have all of the age appropriate screening domains completed within 30 days of entry into care.

Children's Administration



Children's Administration

CHET Screens - Overall Completions (Mental Health, Goal 1, Outcome 2)

Children in out-of-home care 30 days or longer will have a completed and documented Child Health and Education Tracking (CHET) Screen within 30 days of entering care.

Measure definition	Percentage of children in out-of-home care 30 days or longer that have a Child Health and Education Tracking (CHET) screen completed and documented within 30 days of entering care.
Data source	Statewide CHET Database
Data supplier	Brenda Villarreal, Statewide CHET Program Manager, Children's Administration
Next update	December 2010
Frequency	Monthly
Data notes	<p>1 Performance is based on children newly entering out of home care and agreed upon criteria for requiring a CHET screen.</p> <p>2 In order for a CHET Screen to be counted as complete, the Screening Report must have all of the age appropriate screening domains completed within 30 days of entry into care.</p> <p>3 FY09 performance includes Feb 1 – June 20, 2009 data due to the FamLink transition period. This period also marks the start of using a revised definition for "completion."</p>

DATA

DATE	Statewide	TARGET	<30 days	31-45 days	46-60 days	>60 days	Incomplete	Region 1	Region 2	Region 3	Region 4	Region 5	Region 6
FY08	63%	70%						48.0%	65.1%	84.0%	85.5%	43.7%	59.3%
FY09	64%	80%						69.0%	73.0%	61.0%	68.0%	49.0%	73.0%
Jul 2009		90%	Historical Data Previously Reported Quarterly and Pending Monthly Breakdown										
Aug 2009		90%											
Sep 2009	78%	90%											
Oct 2009	77%	90%											
Nov 2009	75%	90%	215	26 (9%)	16 (6%)	3 (1%)	26 (9%)	71%	64%	89%	96%	59%	74%
Dec 2009	77%	90%	244	27 (9%)	20 (6%)	4 (1%)	21 (7%)	79%	55%	100%	82%	71%	82%
Jan 2010	84%	90%	310	37 (10%)	8 (2%)	6 (2%)	7 (2%)	90%	81%	96%	92%	73%	72%
Feb 2010	83%	90%	292	29 (8%)	15 (4%)	3 (1%)	11 (3%)	94%	85%	98%	83%	69%	79%
Mar 2010	79%	90%	340	35 (8%)	20 (5%)	5 (1%)	30 (7%)	77%	68%	98%	98%	59%	86%
Apr 2010	77%	90%	335	22 (5%)	19 (4%)	13 (3%)	46 (11%)	94%	94%	100%	92%	40%	82%
May 2010	77%	90%	365	43 (9%)	9 (2%)	8 (2%)	46 (10%)	79%	93%	99%	93%	40%	84%
Jun 2010	84%	90%	387	28 (6%)	15 (3%)	4 (1%)	28 (6%)	89%	91%	98%	92%	62%	84%
Jul 2010	75%	90%	268	28 (8%)	20 (6%)	6 (2%)	33 (9%)	83%	85%	92%	86%	53%	85%
Aug 2010	90%	90%	355	16 (4%)	14 (4%)	0 (0%)	10 (3%)	82%	100%	100%	94%	87%	86%

Children's Administration

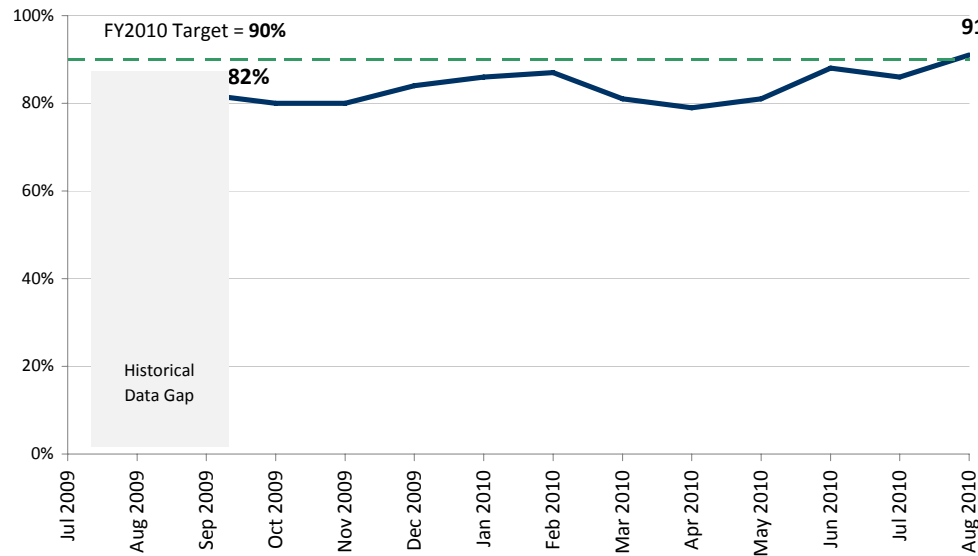
PERFORMANCE MEASURE

[TO DATA CHART](#)

CHET Screens - Physical Health Domain (Mental Health, Goal 1, Outcome 2)

Percentage of children with a completed EPSDT exam within 30 days of entry into care.

Statewide Average



SUMMARY

- CA achieved the 90% benchmark in August 2010 for completing Physical Health Domains within 30 days of a child entering out of home care at 91%. Every region also met the requirement to be within 10% of the benchmark.

- Recognition to Regions 2 and 3 who achieved 100% performance, Region 4 who met the 90% benchmark, and Region 5 who improved performance by 22% in one month.

- Incomplete Physical Health domains was the most significant reason for CHET Screens not completed within 30 days due. An examination of the data identified the most significant reasons are health care providers not being able to provide an exam date within 30 days and delays in receiving exam results.

ACTION PLAN

- Continue to conduct ongoing monthly review of reasons Physical Health Domain are not completed within 30 days to identify and address challenges.

- Identify health care providers that regularly do not provide timely results, and triage and target follow-up.

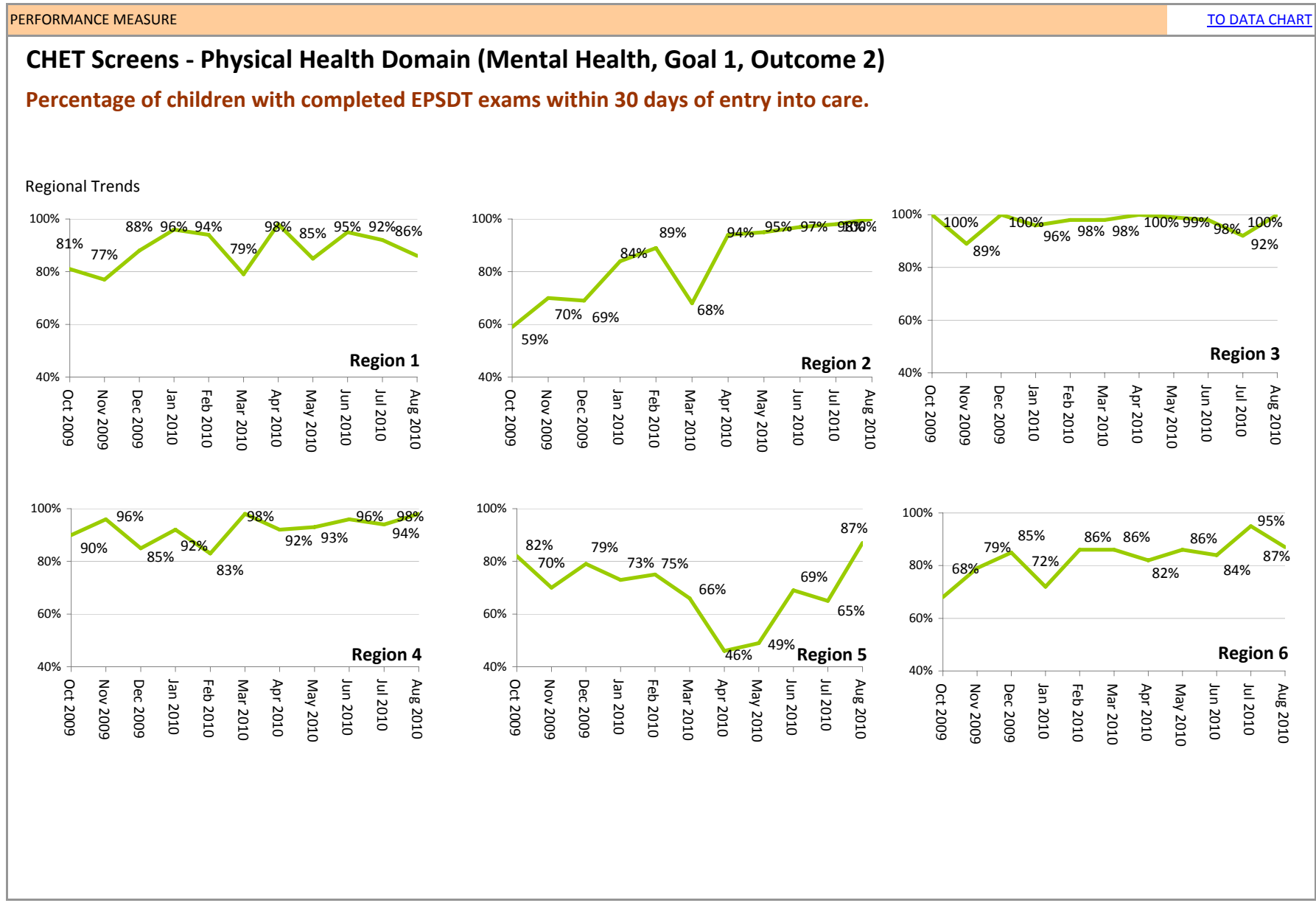
- Continue to partner with the MPA Fostering Well-Being Program to strengthen staff and caregivers understanding of the value of Early ar

DATA SOURCE: Statewide CHET Database; supplied by Brenda Villarreal, Statewide CHET Program Manager

MEASURE DEFINITION: Percentage of children with completed EPSDT exams within 30 days of entry into care.

DATA NOTES: **1** Population is based on children newly entering out of home care and meeting agreed upon criteria for a required CHET screen. **2** In order for a CHET Screen to be counted as complete, the Screening Report must have all of the age appropriate screening domains completed within 30 days of entry into care. **3** To achieve compliance the EPSDT exam must have occurred and exam results must be obtained verbally or in writing and documented.

Children's Administration



Children's Administration

CHET Screens - Physical Health Domain (Mental Health, Goal 1, Outcome 2)

Percentage of children with completed EPSDT exams within 30 days of entry into care.

Measure definition	Percentage of children with completed a EPSDT exam within 30 days of entry into care.
Data source	Statewide CHET Database
Data supplier	Brenda Villarreal, Statewide CHET Program Manager, Children's Administration
Next update	December 2010
Frequency	Monthly
Data notes	<p>1 Population is based on children newly entering out of home care and meeting agreed upon criteria for a required CHET screen.</p> <p>2 In order for a CHET Screen to be counted as complete, the Screening Report must have all of the age appropriate screening domains completed within 30 days of entry into care.</p> <p>3 To achieve compliance the EPSDT exam must have occurred and exam results must be obtained verbally or in writing and documented.</p>

DATA

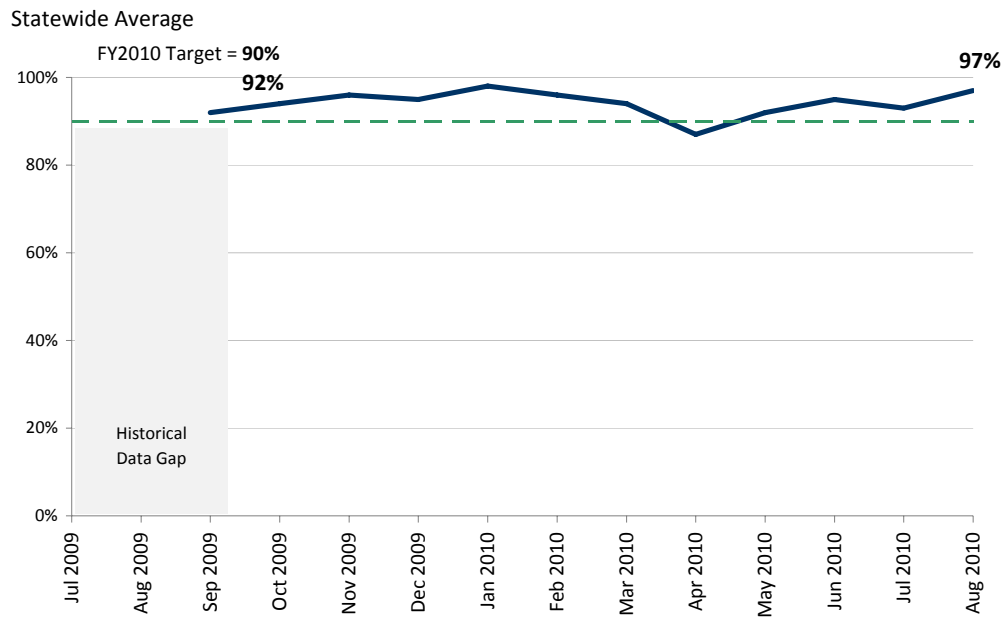
DATE	Statewide	TARGET	<30 days	31-45 days	46-60 days	>60 days	Incomplete	Region 1	Region 2	Region 3	Region 4	Region 5	Region 6
FY2009	71.7%	80%	1186	206 (12.5%)	77 (4.7%)	29 (1.8%)	155 (9.4%)	81.0%	77.0%	68.0%	74.0%	58.0%	77.0%
Jul 2009		90%	Historical Data Previously Reported Quarterly and Pending Monthly Breakdown										
Aug 2009		90%											
Sep 2009	82%	90%											
Oct 2009	80%	90%											
Nov 2009	80%	90%	229	17 (5.9%)	9 (3.1%)	1 (.3%)	30 (10.5%)	77%	70%	89%	96%	70%	79%
Dec 2009	84%	90%	264	21 (6.6%)	13 (4.1%)	0 (0%)	18 (5.7%)	88%	69%	100%	85%	79%	85%
Jan 2010	86%	90%	317	34 (9.2%)	4 (1.1%)	3 (.8%)	10 (2.7%)	96%	84%	100%	92%	73%	72%
Feb 2010	87%	90%	303	26 (7.4%)	6 (1.7%)	3 (.9%)	12 (3.4%)	94%	89%	98%	83%	75%	86%
Mar 2010	81%	90%	349	35 (8.1%)	13 (3%)	2 (.5%)	31 (7.2%)	79%	68%	98%	98%	66%	86%
Apr 2010	79%	90%	345	15 (3.4%)	16 (3.7%)	11 (2.5%)	48 (11%)	98%	94%	100%	92%	46%	82%
May 2010	81%	90%	382	30 (6%)	9 (2%)	4 (1%)	46 (10%)	85%	95%	99%	93%	49%	86%
Jun 2010	88%	90%	407	30 (6%)	7 (2%)	1 (0%)	17 (4%)	95%	97%	98%	96%	69%	84%

Children's Administration

PERFORMANCE MEASURE [TO DATA CHART](#)

CHET Screens - Developmental Domain (Mental Health, Goal 1, Outcome 2)

Percentage of children ages 0-60 months with a completed developmental screen within 30 days of entry into care.



SUMMARY

• CA achieved the 90% benchmark in September 2010 for children having their CHET Screen Developmental Domain completed within 30 days at 97% in August 2010; one of the two highest performing months in the past year.

• In December 2009 and January and February 2010, the benchmark was met statewide by every region.

• In August 2010, every region met the benchmark, with the exception of Region 1, with regional performance ranging between 97% - 100%.

• Regions 4 and 5 performance shows marked improvement between July 2010 and August 2010.

ACTION PLAN

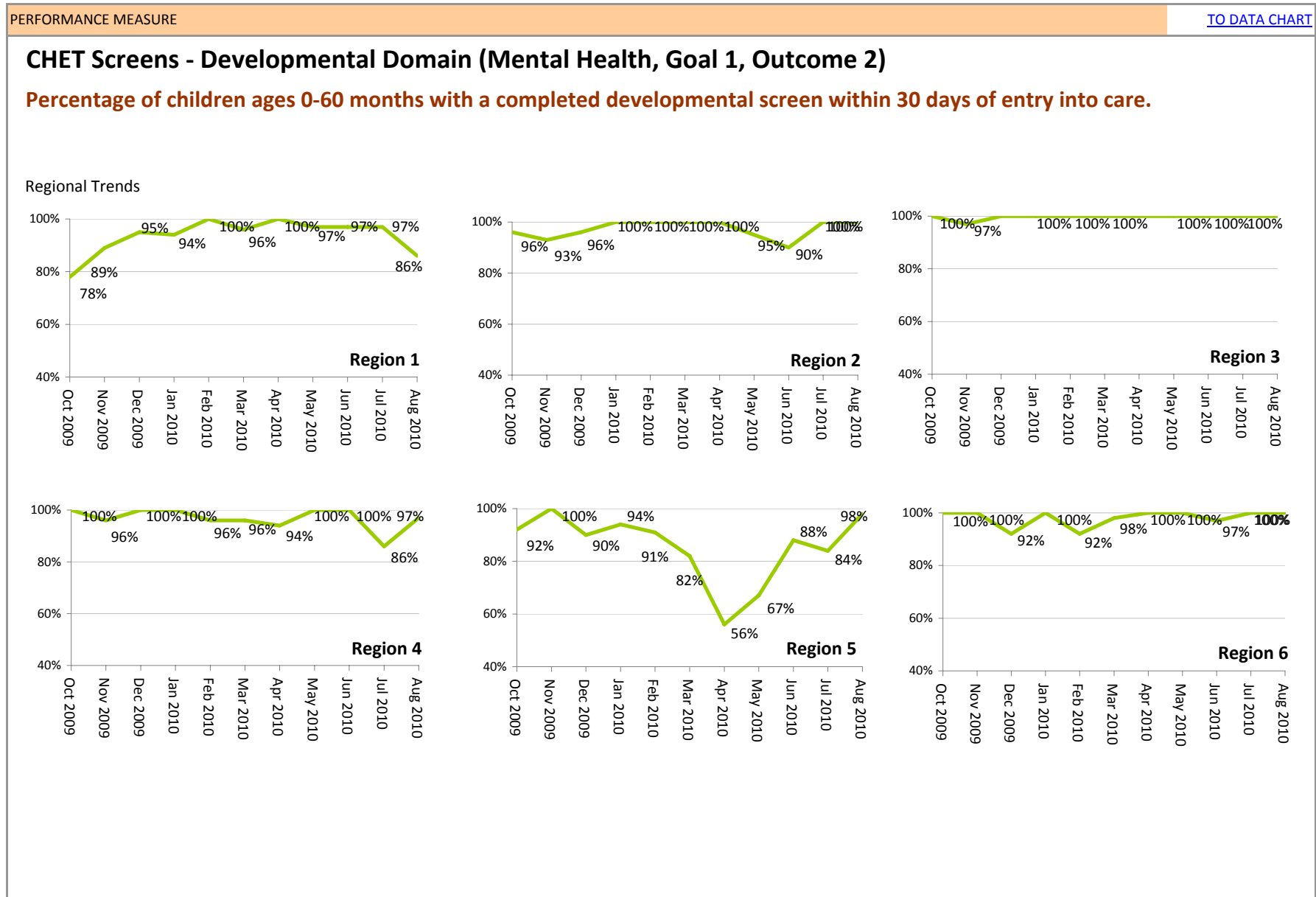
• Continue to conduct ongoing monthly review of reasons the Developmental Domain are not completed within 30 days to identify and address challenges.

DATA SOURCE: Statewide CHET Database; supplied by Brenda Villarreal, Statewide CHET Program Manager

MEASURE DEFINITION: Percentage of children ages 0-60 months with completed developmental screens within 30 days of entry into care.

DATA NOTES: 1 Population is based on children newly entering out of home care and meeting agreed upon criteria for a required CHET screen. 2 In order for a CHET Screen to be counted as complete, the Screening Report must have all of the age appropriate screening domains completed within 30 days of entry into care. 3 This domain applies to children from birth to 60 months of age and to achieve compliance the age appropriate screening tool (Denver or ASQ) must be completed.

Children's Administration



Children's Administration

CHET Screens - Developmental Domain (Mental Health, Goal 1, Outcome 2)

Percentage of children ages 0-60 months with a completed developmental screen within 30 days of entry into care.

Measure definition	Percentage of children ages 0-60 months with a completed developmental screen within 30 days of entry into care.
Data source	Statewide CHET Database
Data supplier	Brenda Villarreal, Statewide CHET Program Manager, Children's Administration
Next update	December 2010
Frequency	Monthly
Data notes	<p>1 Population is based on children newly entering out of home care and meeting agreed upon criteria for a required CHET screen.</p> <p>2 In order for a CHET Screen to be counted as complete, the Screening Report must have all of the age appropriate screening domains completed within 30 days of entry into care.</p> <p>3 This domain applies to children from birth to 60 months of age and to achieve compliance the age appropriate screening tool (Denver or ASQ) must be completed.</p>

DATA

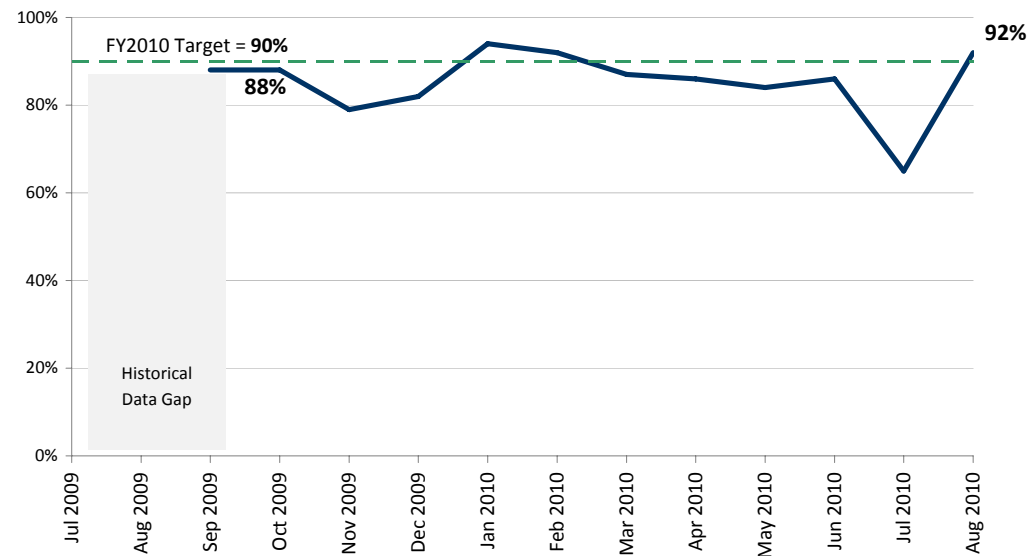
DATE	Statewide	TARGET	<30 days	31-45 days	46-60 days	>60 days	Incomplete	Region 1	Region 2	Region 3	Region 4	Region 5	Region 6
FY2009	94%	80%	772	19 (2.3%)	11 (1.3%)	4 (.5%)	12 (1.5%)	84.0%	99.0%	100.0%	93.0%	97.0%	97.0%
Jul 2009		90%	Historical Data Previously Reported Quarterly and Pending Monthly Breakdown										
Aug 2009		90%											
Sep 2009	92%	90%											
Oct 2009	94%	90%											
Nov 2009	96%	90%	149	0 (0%)	1 (.6%)	0 (0%)	5 (3.2%)	89%	93%	97%	96%	100%	100%
Dec 2009	95%	90%	165	3 (1.7%)	2 (1.1%)	0 (0%)	4 (2.3%)	95%	96%	100%	100%	90%	92%
Jan 2010	98%	90%	208	0 (0%)	2 (.9%)	0 (0%)	3 (1.4%)	94%	100%	100%	100%	94%	100%
Feb 2010	96%	90%	183	4 (2.1%)	0 (0%)	0 (0%)	3 (1.6%)	100%	100%	100%	96%	91%	92%
Mar 2010	94%	90%	226	5 (2.1%)	0 (0%)	0 (0%)	10 (4.1%)	96%	100%	100%	96%	82%	98%
Apr 2010	87%	90%	200	7 (3%)	0 (0%)	1 (.4%)	22 (9.6%)	100%	100%	100%	94%	56%	100%
May 2010	92%	90%	233	8 (3%)	1 (0%)	2 (1%)	10 (4%)	97%	95%	100%	100%	67%	100%
Jun 2010	95%	90%	256	5 (2%)	0 (0%)	0 (0%)	9 (3%)	97%	90%	100%	100%	88%	97%
Jul 2010	93%	90%	191	3 (1%)	2 (1%)	0 (0%)	9 (4%)	97%	100%	100%	86%	84%	100%
Aug 2010	97%	90%	222	5 (2%)	3 (1%)	0 (0%)	0 (0%)	86%	100%	100%	97%	98%	100%

Children's Administration

CHET Screens - Education Domain (Mental Health, Goal 1, Outcome 2)

Percentage of school-aged children for whom educational records are received within 30 days of entry into care.

Statewide Average



SUMMARY

- CA achieved the 90% benchmark in August 2010 for children having their CHET Screen Education Domain completed within 30 days of a child entering out of home care at 92%. Every region also met the requirement to be within 10% of the benchmark.
- Statewide performance improved significantly from 65% in July 2010, in large part to the end of summer and schools being open.
- Recognition to Regions 2, 3 and 4 who achieved 100% performance, and Region 4 who met the 90% benchmark at 96% and improved performance by 50% in one month.
- Data showing the primary reason for the Education Domain not being completed within 30 days was CA not receiving education records within 30 days.

ACTION PLAN

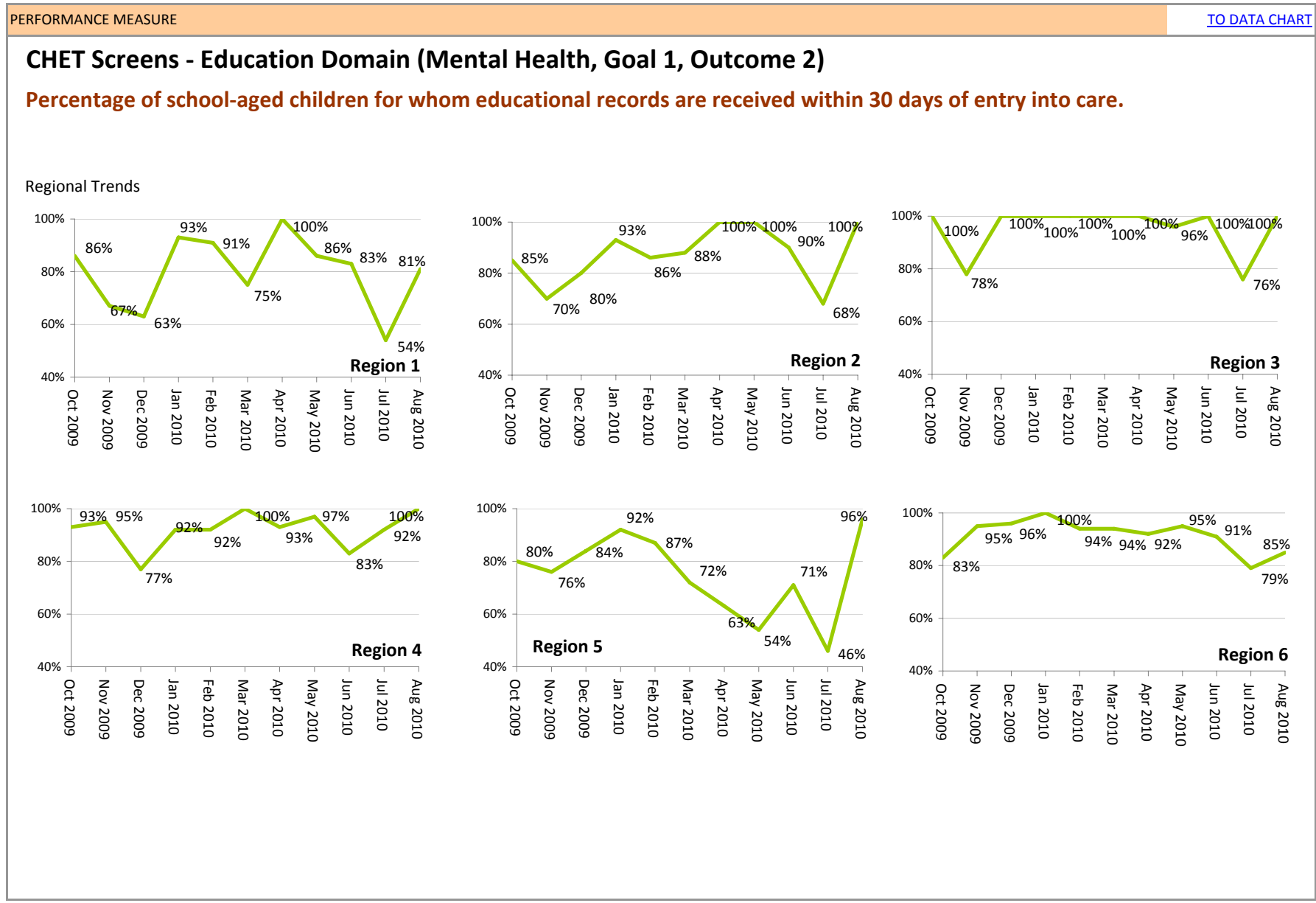
- Continue to conduct ongoing monthly review of reasons the Education Domain are not completed within 30 days to identify and address challenges.
- Continue to build relationships with local and district school staff to increase timely receipt of school records.
- Identify schools and school districts that regularly do not provide timely results, and triage and target follow-up.

DATA SOURCE: Statewide CHET Database; supplied by Brenda Villarreal, Statewide CHET Program Manager

MEASURE DEFINITION: Percentage of school-aged children for whom educational records are received within 30 days of entry into care.

DATA NOTES: **1** Population is based on children newly entering out of home care and meeting agreed upon criteria for a required CHET screen. **2** In order for a CHET Screen to be counted as complete, the Screening Report must have all of the age appropriate screening domains completed within 30 days of entry into care. **3** To achieve compliance all education records must be received for school aged children as specified on the data page, including additional requirements for special education and youth in 11-12 grade.

Children's Administration



Children's Administration

CHET Screens - Education Domain (Mental Health, Goal 1, Outcome 2)

Percentage of school-aged children for whom educational records are received within 30 days of entry into care.

Measure definition	Percentage of school-aged children for whom educational records are received within 30 days of entry into care.
Data source	Statewide CHET Database
Data supplier	Brenda Villarreal, Statewide CHET Program Manager, Children's Administration
Next update	December 2010
Frequency	Monthly
Data notes	<p>1 Population is based on children newly entering out of home care and meeting agreed upon criteria for a required CHET screen.</p> <p>2 In order for a CHET Screen to be counted as complete, the Screening Report must have all of the age appropriate screening domains completed within 30 days of entry into care.</p> <p>3 To achieve compliance on the Education Domain all school age children education records as identified below must be received and reviewed:</p> <ul style="list-style-type: none"> <i>o The child's specific student identification (SSID) number</i> <i>o Most recent year-end transcript (secondary) OR report card (elementary) identifying grades and GPA (including the most recent grading period, child's GPA, or grades)</i> <i>o Attendance records</i> <i>o Discipline records from the most recent complete school year and most recent grading period</i> <i>o For children receiving special education services: School evaluation report, and IEP or 504 Plan</i> <i>o For students in grades 11 – 12: Tenth grade WASL scores</i>

DATA

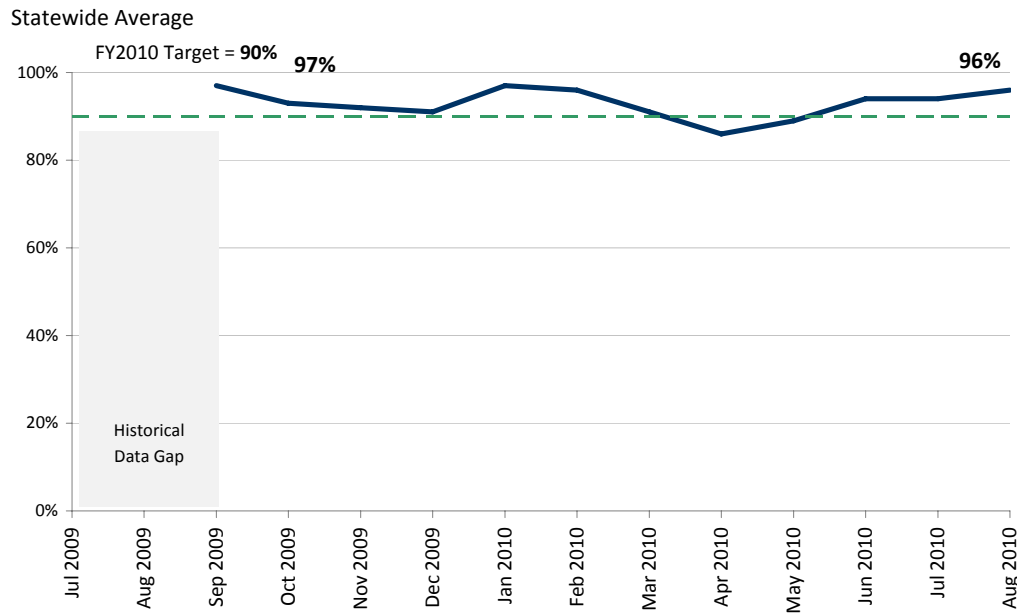
DATE	Statewide	TARGET	<30 days	31-45 days	46-60 days	>60 days	Incomplete	Region 1	Region 2	Region 3	Region 4	Region 5	Region 6
FY2009	81%	80%	580	38 (5.3%)	16 (2.2%)	14 (1.9%)	70 (9.7%)	76.0%	92.0%	84.0%	77.0%	74.0%	87.0%
Jul 2009		90%	Historical Data Previously Reported Quarterly and Pending Monthly Breakdown										
Aug 2009		90%											
Sep 2009	88%	90%											
Oct 2009	88%	90%											
Nov 2009	79%	90%	91	7 (6.1%)	7 (6.1%)	1 (.9%)	9 (7.8%)	67%	70%	78%	95%	76%	95%
Dec 2009	82%	90%	103	12 (9.6%)	3 (2.4%)	1 (.8%)	6 (4.8%)	63%	80%	100%	77%	84%	96%
Jan 2010	94%	90%	132	3 (2.1%)	0 (0%)	1 (.7%)	4 (2.9%)	93%	93%	100%	92%	92%	100%
Feb 2010	92%	90%	134	4 (2.7%)	4 (2.7%)	0 (0%)	4 (2.7%)	91%	86%	100%	92%	87%	94%
Mar 2010	87%	90%	147	5 (3%)	5 (3%)	0 (0%)	12 (7.1%)	75%	88%	100%	100%	72%	94%
Apr 2010	86%	90%	158	5 (2.7%)	4 (2.2%)	0 (0%)	16 (8.7%)	100%	100%	100%	93%	63%	92%
May 2010	84%	90%	161	5 (3%)	0 (0%)	1 (1%)	25 (13%)	86%	100%	96%	97%	54%	95%
Jun 2010	86%	90%	132	6 (4%)	5 (3%)	0 (0%)	11 (7%)	83%	90%	100%	83%	71%	91%
Jul 2010	65%	90%	88	15 (11%)	10 (7%)	15 (11%)	10 (7%)	54%	68%	76%	92%	46%	79%
Aug 2010	92%	90%	131	3 (2%)	2 (1%)	0 (0%)	6 (4%)	81%	100%	100%	100%	96%	85%

Children's Administration

PERFORMANCE MEASURE

CHET Screens - Emotional/Behavioral Domain (Mental Health, Goal 1, Outcome 2)

Percentage of children with a completed Child Behavior Checklist within 30 days of entry into care.



SUMMARY

- CA achieved the 90% benchmark in August 2010 for children having their CHET Screen Emotional/Behavioral Domain completed at 96%.
- In August 2010, every region met the benchmark with the exception of Region 1 with regional performance ranging between 98% - 100%.
- Regions 2, 3, 4, and 6 met the benchmark the past eight months.
- Regions 4 and 5 performance shows marked improvement between August 2010 and September 2010.

ACTION PLAN

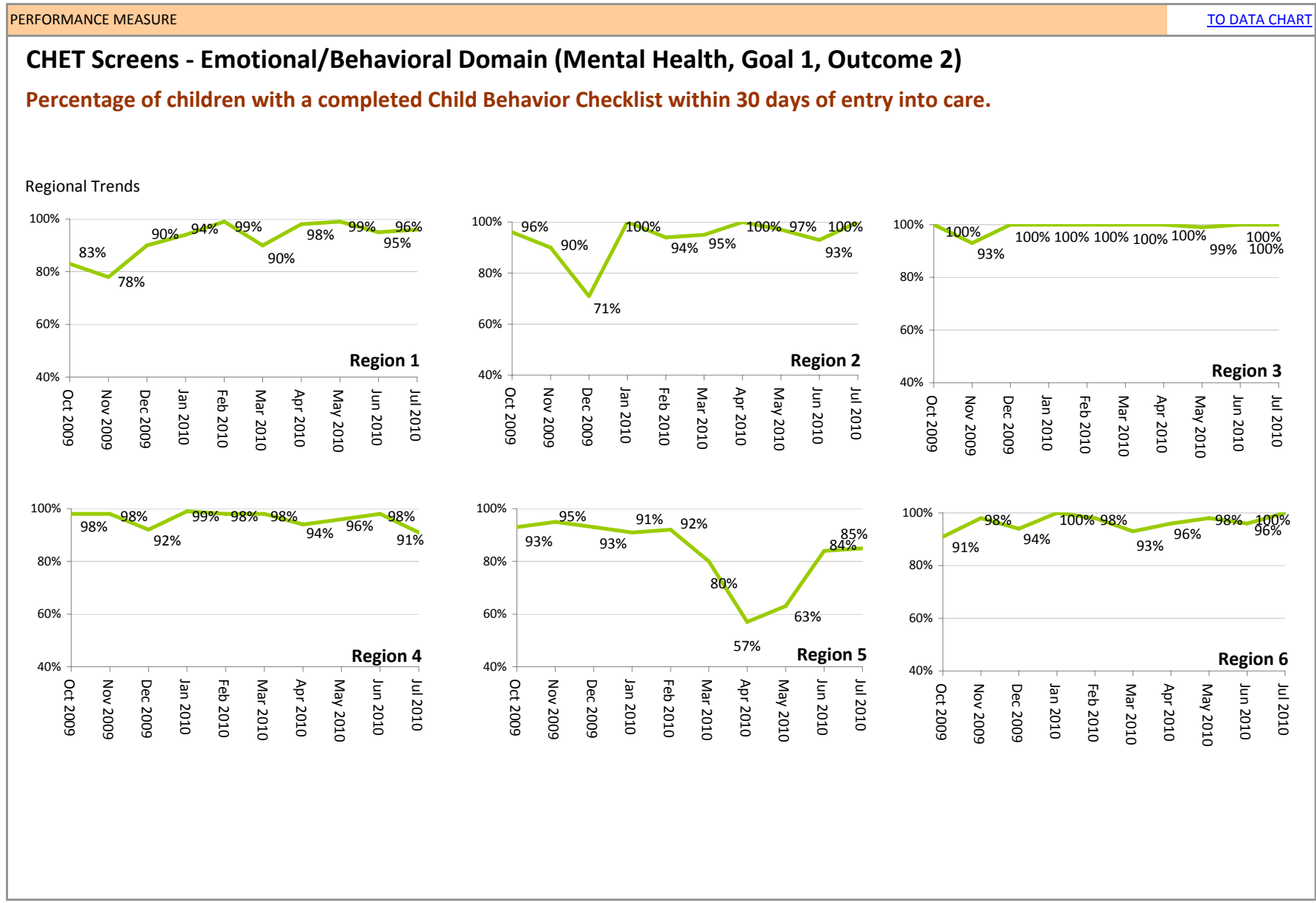
- Continue to conduct ongoing monthly review of reasons the Emotional/Behavioral Domain are not completed within 30 days to identify and address challenges.

DATA SOURCE: Statewide CHET Database; supplied by Brenda Villarreal, Statewide CHET Program Manager

MEASURE DEFINITION: Percentage of children ages 6-18 years with completed Child Behavior Checklists within 30 days of entry into care.

DATA NOTES: 1 Population is based on children newly entering out of home care and meeting agreed upon criteria for a required CHET screen. 2 In order for a CHET Screen to be counted as complete, the Screening Report must have all of the age appropriate screening domains completed within 30 days of entry into care. 3 To achieve compliance children 3 months to 5 years of age must have a completed ASQ-SE and children age 6 years to 18 years a completed PSC-17.

Children's Administration



Children's Administration

CHET Screens - Emotional/Behavioral Domain (Mental Health, Goal 1, Outcome 2)

Percentage of children with a completed Child Behavior Checklist within 30 days of entry into care.

Measure definition	Percentage of children with a completed Child Behavior Checklist within 30 days of entry into care.
Data source	Statewide CHET Database
Data supplier	Brenda Villarreal, Statewide CHET Program Manager, Children's Administration
Next update	December 2010
Frequency	Monthly
Data notes	<p>1 Population is based on children newly entering out of home care and meeting agreed upon criteria for a required CHET screen.</p> <p>2 In order for a CHET Screen to be counted as complete, the Screening Report must have all of the age appropriate screening domains completed within 30 days of entry into care.</p> <p>3 To achieve compliance children 3 months to 5 years of age must have a completed ASQ-SE and children age 6 years to 18 years a completed PSC-17.</p>

DATA

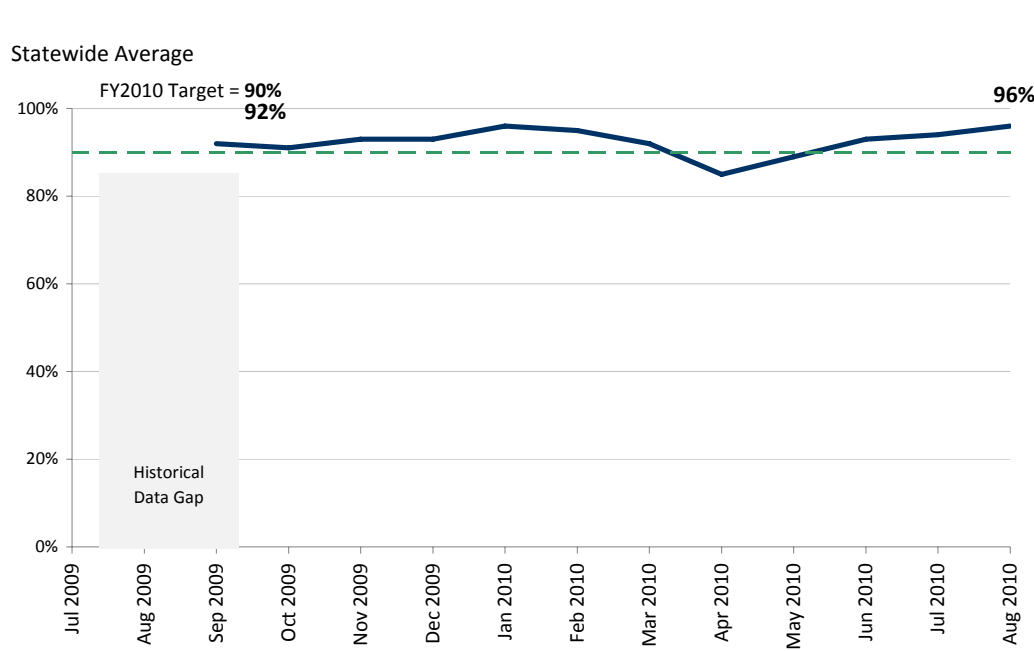
DATE	Statewide	TARGET	<30 days	31-45 days	46-60 days	>60 days	Incomplete	Region 1	Region 2	Region 3	Region 4	Region 5	Region 6
FY2009	91%	80%	1417	53 (3.4%)	19 (1.2%)	17 (1.1%)	44 (2.8%)	82.0%	98.0%	98.0%	90.0%	90.0%	94.0%
Jul 2009		90%	Historical Data Previously Reported Quarterly and Pending Monthly Breakdown										
Aug 2009		90%											
Sep 2009	97%	90%											
Oct 2009	93%	90%											
Nov 2009	92%	90%	255	4 (1.4%)	6 (2.2%)	2 (.7%)	10 (3.6%)	78%	90%	93%	98%	95%	98%
Dec 2009	91%	90%	281	10 (3.2%)	5 (1.6%)	1 (.3%)	13 (4.2%)	90%	71%	100%	92%	93%	94%
Jan 2010	97%	90%	349	2 (.6%)	3 (.8%)	0 (0%)	7 (1.9%)	94%	100%	100%	99%	91%	100%
Feb 2010	96%	90%	320	5 (1.5%)	3 (.9%)	0 (0%)	5 (1.5%)	99%	94%	100%	98%	92%	98%
Mar 2010	91%	90%	384	12 (2.8%)	4 (.9%)	0 (0%)	22 (5.2%)	90%	95%	100%	98%	80%	93%
Apr 2010	86%	90%	360	16 (3.8%)	2 (.5%)	0 (0%)	41 (9.8%)	98%	100%	100%	94%	57%	96%
May 2010	89%	90%	414	12 (3%)	1 (0%)	2 (0%)	34 (7%)	99%	97%	99%	96%	63%	98%
Jun 2010	94%	90%	423	14 (3%)	2 (0%)	1 (0%)	12 (3%)	95%	93%	100%	98%	84%	96%
Jul 2010	94%	90%	328	2 (1%)	0 (0%)	2 (1%)	18 (5%)	96%	100%	100%	91%	85%	100%
Aug 2010	96%	90%	375	6 (2%)	3 (1%)	0 (0%)	5 (1%)	86%	100%	100%	98%	99%	98%

Children's Administration

PERFORMANCE MEASURE [TO DATA CHART](#)

CHET Screens - Connections Domain (Mental Health, Goal 1, Outcome 2)

Percentage of children with a completed Connections domain within 30 days of entry into care.



SUMMARY

- CA achieved the 90% benchmark in August 2010 for children having their CHET Screen Connections Domain completed at 96%.
- In August 2010, every region with the exception of Region 1 met the benchmark with performance between 98% - 100%.
- Regions 2, 3, 4, and 6 met the benchmark the past eight months.
- Regions 4 and 5 performance shows marked improvement between August 2010 and September 2010.

ACTION PLAN

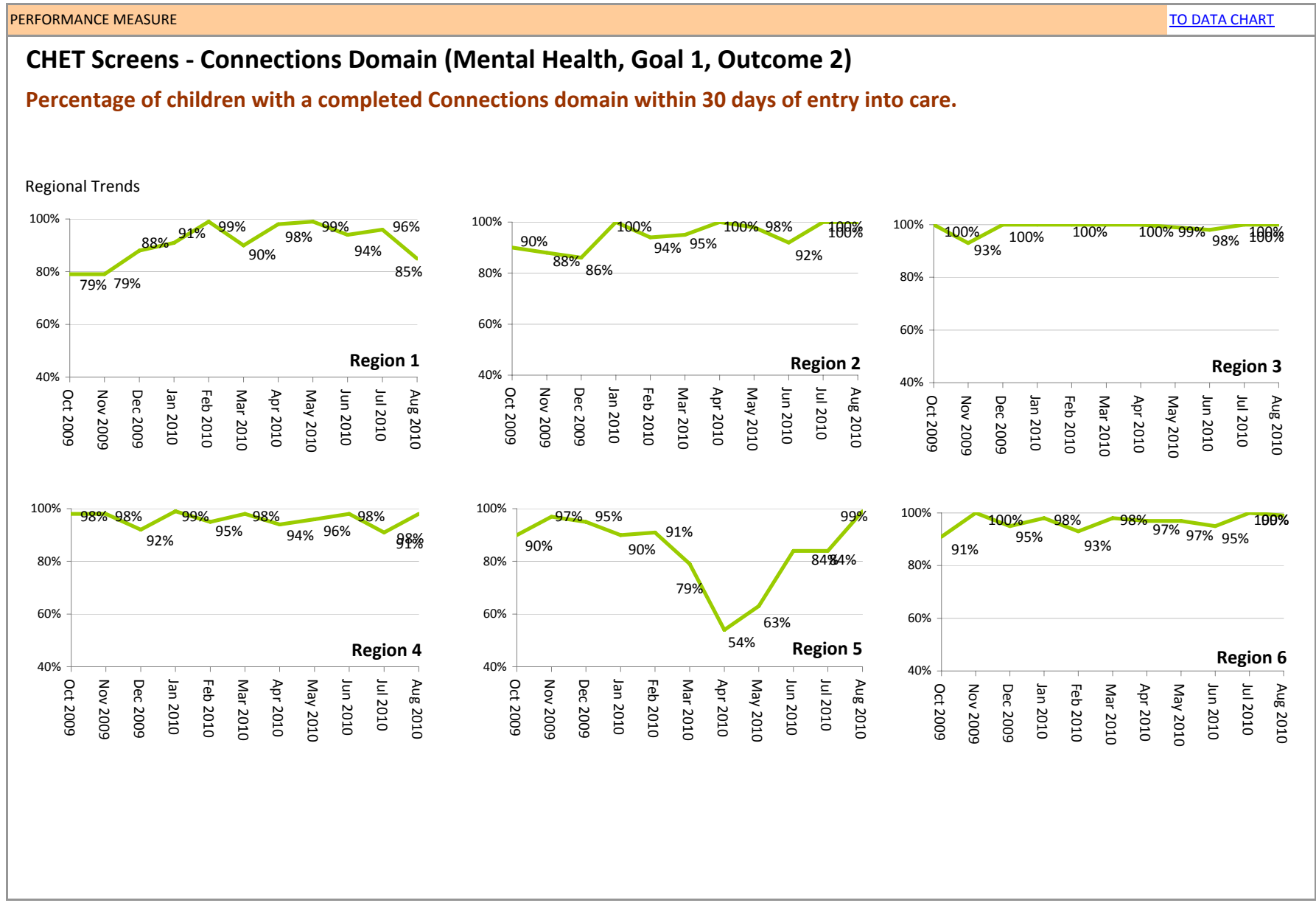
- Continue to conduct ongoing monthly review of reasons the Connections Domain are not completed within 30 days to identify and address challenges.

DATA SOURCE: Statewide CHET Database; supplied by Brenda Villarreal, Statewide CHET Program Manager

MEASURE DEFINITION: Percentage of children with completed Connections within 30 days of entry into care.

DATA NOTES: 1 Population is based on children newly entering out of home care and meeting agreed upon criteria for a required CHET screen. 2 In order for a CHET Screen to be counted as complete, the Screening Report must have all of the age appropriate screening domains completed within 30 days of entry into care. 3 To achieve compliance all children must be assessed for their connections.

Children's Administration



Children's Administration

CHET Screens - Connections Domain (Mental Health, Goal 1, Outcome 2)

Percentage of children with a completed Connections domain within 30 days of entry into care.

Measure definition	Percentage of children with s completed Connections domain within 30 days of entry into care.
Data source	Statewide CHET Database
Data supplier	Brenda Villarreal, Statewide CHET Program Manager, Children's Administration
Next update	December 2010
Frequency	Monthly
Data notes	<p>1 Population is based on children newly entering out of home care and meeting agreed upon criteria for a required CHET screen.</p> <p>2 In order for a CHET Screen to be counted as complete, the Screening Report must have all of the age appropriate screening domains completed within 30 days of entry into care.</p> <p>3 To achieve compliance all children must have their "connections" assessed. .</p>

DATA

DATE	Statewide	TARGET	<30 days	31-45 days	46-60 days	>60 days	Incomplete	Region 1	Region 2	Region 3	Region 4	Region 5	Region 6
FY09	92%	80%	1513	60 (3.6%)	22 (1.3%)	12 (.7%)	46 (2.8%)	81.0%	98.0%	99.0%	89.0%	90.0%	94.0%
Jul 2009		90%	Historical Data Previously Reported Quarterly and Pending Monthly Breakdown										
Aug 2009		90%											
Sep 2009	92%	90%											
Oct 2009	91%	90%	282	12 (3.9%)	6 (1.9%)	0 (0%)	9 (2.9%)	79%	90%	100%	98%	90%	91%
Nov 2009	93%	90%	265	3 (1%)	6 (2.1%)	0 (0%)	12 (4.2%)	79%	88%	93%	98%	97%	100%
Dec 2009	93%	90%	293	4 (1.3%)	5 (1.6%)	1 (.3%)	13 (4.1%)	88%	86%	100%	92%	95%	95%
Jan 2010	96%	90%	352	3 (.8%)	5 (1.4%)	0 (0%)	8 (2.2%)	91%	100%	100%	99%	90%	98%
Feb 2010	95%	90%	333	7 (2%)	5 (1.4%)	0 (0%)	5 (1.4%)	99%	94%	100%	95%	91%	93%
Mar 2010	92%	90%	395	10 (2.3%)	3 (.7%)	0 (0%)	22 (5.1%)	90%	95%	100%	98%	79%	98%
Apr 2010	85%	90%	371	21 (4.8%)	2 (.5%)	1 (.2%)	40 (9.2%)	98%	100%	100%	94%	54%	97%
May 2010	89%	90%	420	11 (2%)	1 (0%)	2 (0%)	37 (8%)	99%	98%	99%	96%	63%	97%
Jun 2010	93%	90%	428	17 (4%)	1 (0%)	1 (0%)	15 (3%)	94%	92%	98%	98%	84%	95%
Jul 2010	94%	90%	332	4 (1%)	2 (1%)	0 (0%)	17 (5%)	96%	100%	100%	91%	84%	100%
Aug 2010	96%	90%	381	5 (1%)	4 (1%)	0 (0%)	5 (1%)	85%	100%	100%	98%	99%	99%

Children's Administration

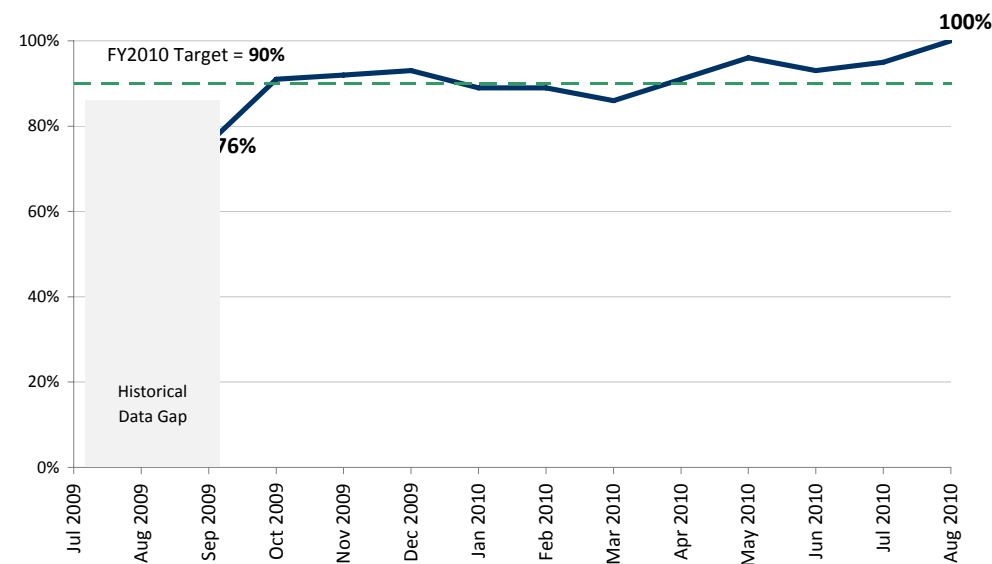
PERFORMANCE MEASURE

[TO DATA CHART](#)

Early Support for Infant and Toddlers (ESIT) Program Referral within 2 Workdays (Mental Health, Goal 1, Outcome 4)

Children age 3 and under in out-of-home care will be referred to the Early Support for Infant and Toddlers (ESIT) Program within 2 workdays of identification of concerns about developmental delays from their CHET screen.

Statewide Average



SUMMARY

- CA achieved the 90% benchmark in August 2010 for children with identified concerns for development delays being referred to the Early Support for Infant and Toddlers (ESIT) Program within 2 workdays at 100%. This is the first month 100% performance was achieved.
- CA performance on this outcome has improved significantly since September 2009; a 24% increase.
- CA met the 90% benchmark statewide for the past five reporting months.
- Compliance for this outcome requires the statewide benchmark be met and no region's performance be more than 10 percentage points lower than the benchmark. CA has met this requirement the past three months.

ACTION PLAN

- Continue to conduct ongoing monthly review of reasons ESIT Program referrals are not made within 2 workdays to identify and address challenges.

DATA SOURCE: Statewide CHET Database; supplied by Brenda Villarreal, Statewide CHET Program Manager

MEASURE DEFINITION: Children age 3 and under in out-of-home care will be referred to the Early Support for Infant and Toddlers Program within 2 workdays of identification of concerns about developmental delays from their CHET screens.

DATA NOTES: **1** Population is based on children newly entering out of home care, in care > 30 days, and meeting agreed upon criteria for a required CHET screen, including completion of a developmental screening. **2** Performance data is based on all required CHET screens. **3** Children with identified concerns that are already receiving ESIT Program services are counted as compliant. **4** To achieve compliance children identified with concerns about developmental delays from their CHET Screen need to be referred to the ESIT Program within 2 workdays or already be receiving ESIT Program services.

Children's Administration

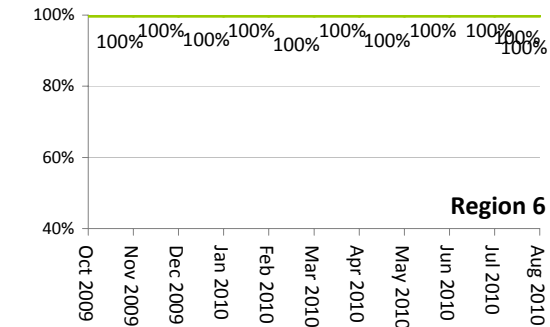
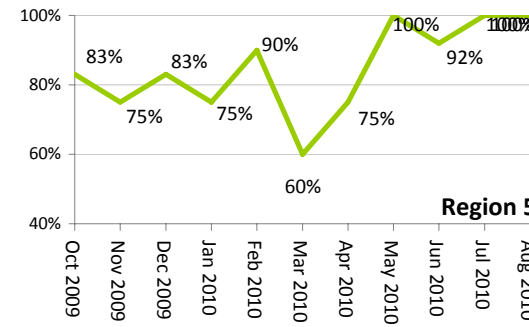
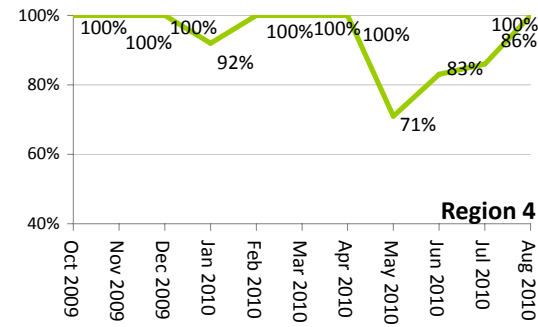
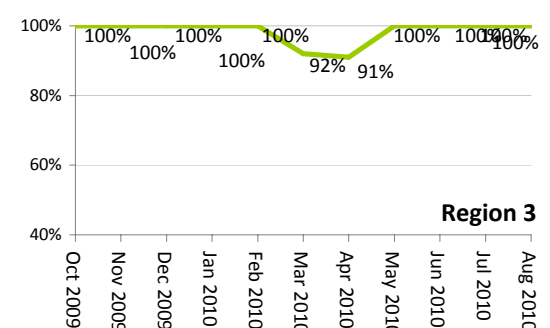
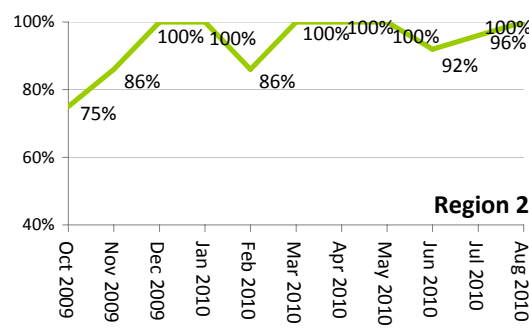
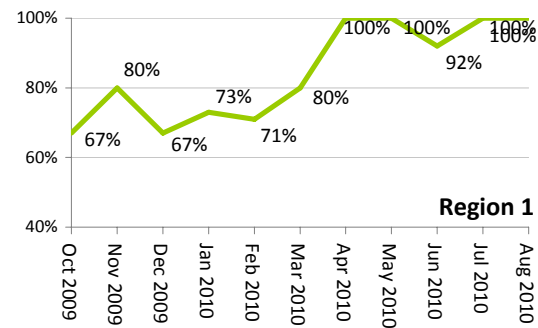
PERFORMANCE MEASURE

[TO DATA CHART](#)

Early Support for Infant and Toddlers (ESIT) Program Referral within 2 Workdays (Mental Health, Goal 1, Outcome 4)

Children age 3 and under in out-of-home care will be referred to the Early Support for Infant and Toddlers (ESIT) Program within 2 workdays of identification of concerns about developmental delays from their CHET screen.

Regional Trends



Children's Administration

Early Support for Infant and Toddlers (ESIT) Program Referrals within 2 Workdays (Mental Health, Goal 1, Outcome 4)

Children age 3 and under in out-of-home care will be referred to the Early Support for Infant and Toddlers (ESIT) Program within 2 workdays of identification of concerns about developmental delays from their CHET screen.

Measure definition	Percentage of children age 3 and under in out-of-home care with identification of concerns about developmental delays from their CHET Screens that are referred to the Early Support for Infant and Toddlers (ESIT) Program within 2 workdays.
Data source	Statewide CHET Database
Data supplier	Brenda Villarreal, Statewide CHET Program Manager, Children's Administration
Next update	December 2010
Frequency	Monthly
Data notes	<p>1 Population is based on children newly entering out of home care, in care > 30 days, and meeting agreed upon criteria for a required CHET screen, including completion of a developmental screening.</p> <p>2 Performance data is based on all required CHET screens.</p> <p>3 Children with identified concerns that are already receiving ESIT Program services are counted as compliant.</p> <p>4 To achieve compliance children identified with concerns about developmental delays from their CHET Screen need to be referred to the ESIT Program within 2 workdays or already be receiving ESIT program services.</p>

DATA

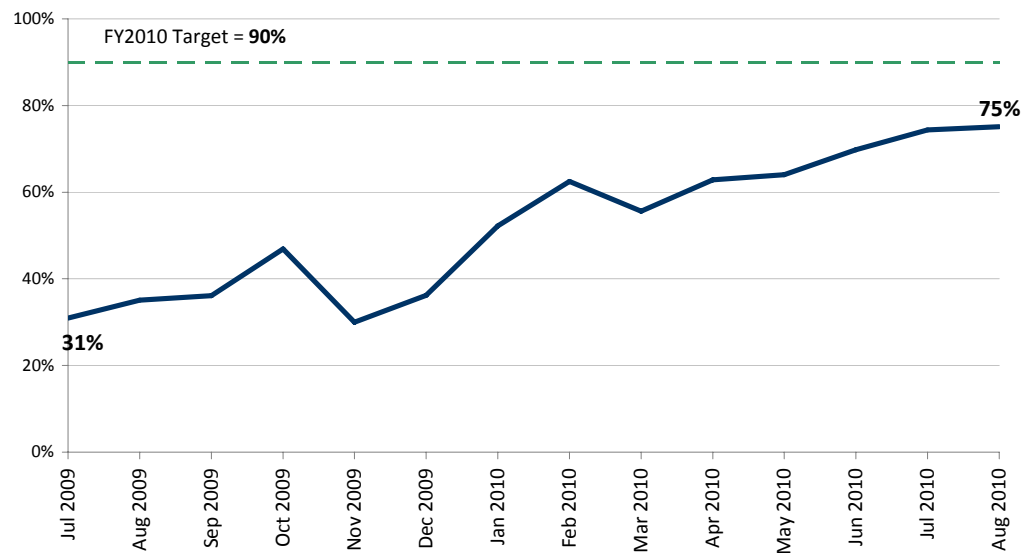
DATE	Statewide	TARGET	0-2 days	3-5 days	6-10 days	Over 10 days	Incomplete	Region 1	Region 2	Region 3	Region 4	Region 5	Region 6
FY09	72%	85%	129	6 (3%)	10 (6%)	9 (5%)	25 (14%)	59.0%	59.0%	97.0%	68.0%	59.0%	93.0%
Jul 2009		90%	Historical Data Previously Reported Quarterly and Pending Monthly Breakdown										
Aug 2009		90%											
Sep 2009	76%	90%											
Oct 2009	91%	90%											
Nov 2009	92%	90%	35	0 (0%)	1 (3%)	0 (0%)	2 (5%)	80%	86%	100%	100%	75%	100%
Dec 2009	93%	90%	39	0 (0%)	0 (0%)	0 (0%)	4 (10%)	67%	100%	100%	100%	83%	100%
Jan 2010	89%	90%	48	0 (0%)	0 (0%)	3 (6%)	3 (6%)	73%	100%	100%	92%	75%	100%
Feb 2010	89%	90%	32	3 (8%)	0 (0%)	0 (0%)	1 (3%)	71%	86%	100%	100%	90%	100%
Mar 2010	86%	90%	38	0 (0%)	0 (0%)	2 (5%)	5 (11%)	80%	100%	92%	100%	60%	100%
Apr 2010	91%	90%	30	1 (3%)	0 (0%)	2 (6%)	0 (0%)	100%	100%	91%	100%	75%	100%
May 2010	96%	90%	48	1 (2%)	1 (2%)	0 (0%)	0 (0%)	100%	100%	100%	71%	100%	100%
Jun 2010	93%	90%	54	0 (0%)	2 (3%)	1 (2%)	2 (3%)	92%	92%	100%	83%	92%	100%
Jul 2010	95%	90%	37	1 (3%)	0 (0%)	1 (3%)	0 (0%)	100%	96%	100%	86%	100%	100%
Aug 2010	100%	90%	53	0 (0%)	0 (0%)	0 (0%)	0 (0%)	100%	100%	100%	100%	100%	100%

Children's Administration

Shared Planning Meeting Focused on CHET Screen within 60 Days (Mental Health, Goal 1, Outcome 3)

A shared planning meeting focused on the CHET screening results will be held within 60 days of each child's entry into care.

Statewide Average



SUMMARY

- Performance for social workers holding a Shared Planning meeting focused on children's CHET Screen results within 60 days of entry into care was 75% in August 2010.
- CA performance has steadily improved since July 2009, a 44% increase.
- In August 2010, Region 3 had the highest performance at 88%.
- Region 6 showed the most significant improvement between July and August 2010, an 11% increase.
- Regions 1 and 5 experienced a slight decrease of 3% in performance since last month and Region 2 showed a marked decrease of 13%.
- The number of required meetings not documented has significantly and steadily decreased over the last year; 159 meetings in July 2009 and 74 meetings in July 2010.
- Development and use of the monthly FamLink management report, communication to staff and managers regarding expectations and accountability, and data clean up are the most significant factors contributing to improved performance.
- The Shared Planning policy was updated in October 2010 to better reflect required timeframes for holding staffings to review and address children's CHET Screen results. Staff received clarification and

DATA SOURCE: FamLink and Statewide CHET Database; supplied by Lisa Barber, Data Analyst, Children's Administration

MEASURE DEFINITION: A shared planning meeting (SPM) focusing on the CHET screening results will be held within 60 days of each child's entry into care.

DATA NOTES: **1** Population includes children entering care between 7/1/09 and 8/31/10, in care for 60 days or more, and under CA Placement and Care Authority. **2** Children newly entering out of home care are matched in the CHET database to identify children meeting criteria for a CHET Screen. **3** To achieve compliance a shared planning meeting focused on CHET Screen results must be accurately documented in FamLink within 60 days of the child entering out of home care.

ACTION PLAN

- Continue to use of the FamLink Management report to monitor and
- As needed, provide staff in-service refresher training on the policy and

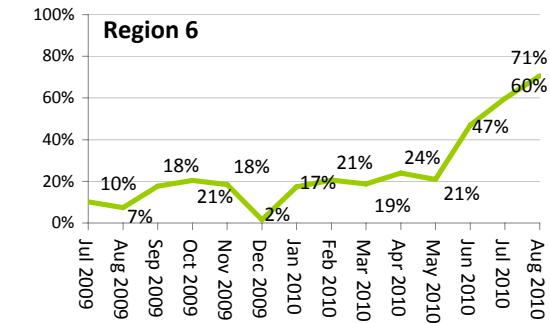
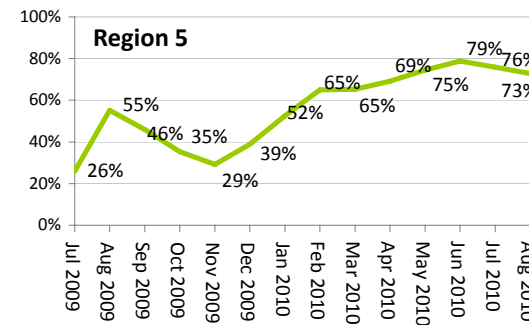
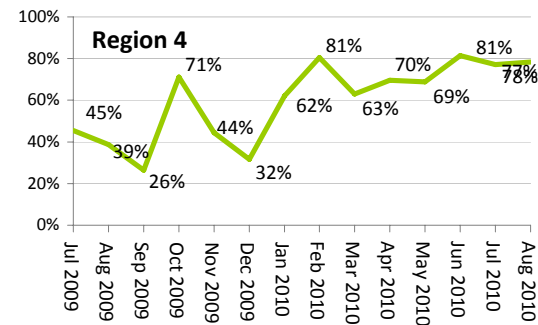
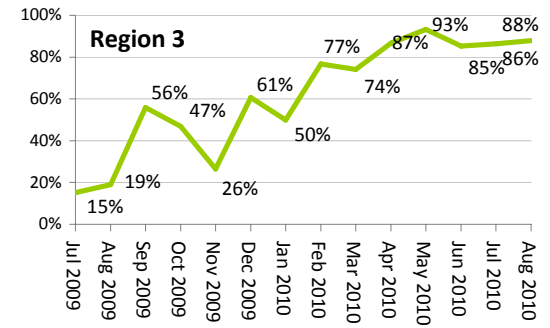
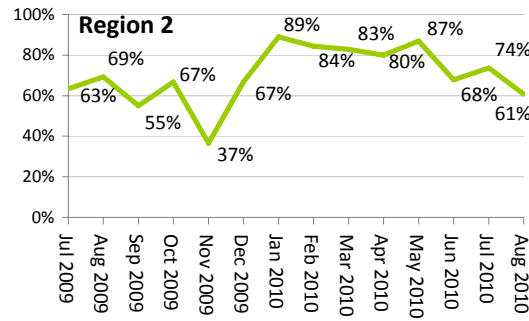
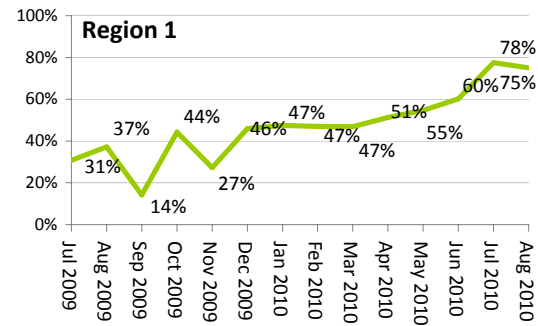
Children's Administration

PERFORMANCE MEASURE [TO DATA CHART](#)

Shared Planning Meeting Focused on CHET Screen within 60 Days (Mental Health, Goal 1, Outcome 3)

A shared planning meeting focused on the CHET screen results will be held within 60 days of each child's entry into care.

Regional Trends



Children's Administration

Shared Planning Meeting Focused on CHET within 60 Days (Mental Health, Goal 1, Outcome 3)

A shared planning meeting (SPM) focusing on the CHET screening results will be held within 60 days of each child's entry into care.

Measure definition	A shared planning meeting focused on the CHET screen results will be held within 60 days of each child's entry into care.
Data source	FamLink and Statewide CHET Database
Data supplier	Lisa Barber, Data Analyst, Children's Administration
Next update	December 2010
Frequency	Monthly
Data notes	<p>1 Population includes children entering care between 7/1/09 and 8/31/10, in care for 60 days or more, and under CA Placement and Care Authority.</p> <p>2 Children newly entering out of home care are matched in the CHET database to identify children meeting criteria for a CHET Screen.</p> <p>3 To achieve compliance a shared planning meeting focused on CHET Screen results must be accurately documented in FamLink within 60 days of the child entering out of home care.</p>

DATA

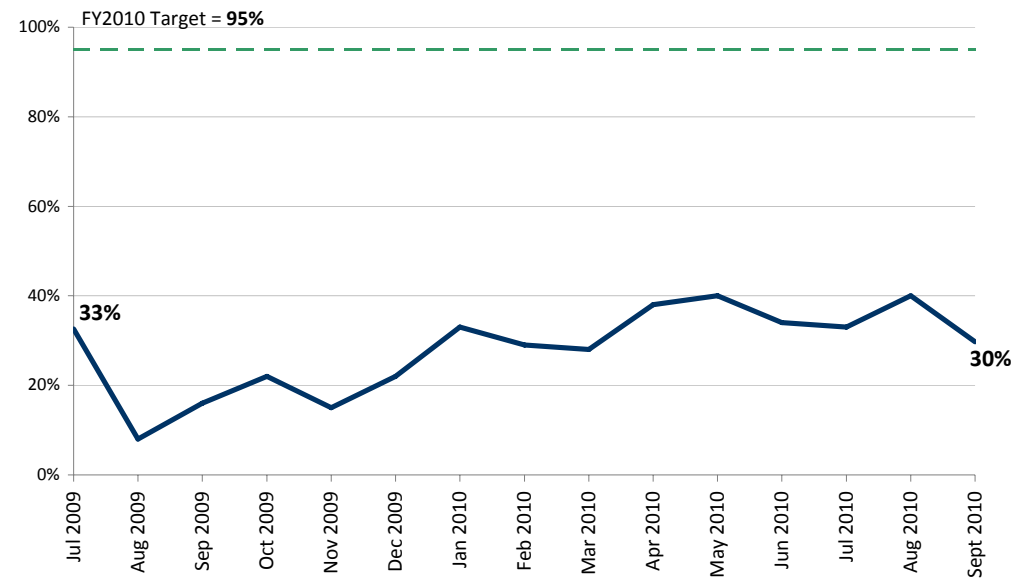
DATE	Statewide	TARGET	< 60 days	61-90 days	>90 days	Not Documented	Region 1	Region 2	Region 3	Region 4	Region 5	Region 6
Jul 2009	30.9%	90%	81	2 (.76%)	20 (7.63%)	159 (60.69%)	31%	63%	15%	45%	26%	10%
Aug 2009	35.1%	90%	86	9 (3.67%)	6 (2.45%)	144 (58.78%)	37%	69%	19%	39%	55%	7%
Sep 2009	36.1%	90%	87	9 (3.73%)	16 (6.64%)	129 (53.53%)	14%	55%	56%	26%	46%	18%
Oct 2009	46.9%	90%	122	3 (1.15%)	6 (2.31%)	129 (49.62%)	44%	67%	47%	71%	35%	21%
Nov 2009	30.0%	90%	69	3 (1.30%)	18 (7.83%)	140 (60.87%)	27%	37%	26%	44%	29%	18%
Dec 2009	36.2%	90%	98	10 (3.69%)	16 (5.90%)	147 (54.24%)	46%	67%	61%	32%	39%	2%
Jan 2010	52.2%	90%	163	8 (2.56%)	7 (2.24%)	134 (42.95%)	47%	89%	50%	62%	52%	17%
Feb 2010	62.5%	90%	190	9 (2.96%)	9 (2.96%)	96 (31.58%)	47%	84%	77%	81%	65%	21%
Mar 2010	55.6%	90%	212	18 (4.72%)	43 (11.29%)	108 (28.35%)	47%	83%	74%	63%	65%	19%
Apr 2010	62.8%	90%	235	14 (3.74%)	36 (9.63%)	89 (23.80%)	51%	80%	87%	70%	69%	24%
May 2010	64.0%	90%	281	27 (6.15%)	41 (9.24%)	90 (20.50%)	55%	87%	93%	69%	75%	21%
Jun 2010	69.8%	90%	294	22 (5.23%)	9 (2.14%)	96 (22.80%)	60%	68%	85%	81%	79%	47%
Jul 2010	74.4%	90%	247	14 (4.22%)	0 (0%)	71 (21.39%)	78%	74%	86%	77%	76%	60%
Aug 2010	75.1%	90%	275	17 (4.6%)	0 (0%)	74 (21.22%)	75%	61%	88%	78%	73%	71%

Children's Administration

Youth Transition (Exit) Staffings (Services to Adolescents, Goal 2, Outcome 3)

A multi-disciplinary staffing meeting will be held six months prior to a youth's exit from foster care to address issues related to transition to independence.

Statewide Average



DATA SOURCE: FamLink; supplied by Lee Doran, Lead Analyst, Children's Administration

MEASURE DEFINITION: A multi-disciplinary staffing meeting will be held six months prior to a youth's exit from foster care to address issues related to transition to independence.

DATA NOTES: **1** In November 2010 the methodology for this report was revised to better reflect performance with CA policy and the federal standard (See data notes for additional information). **2** Population includes all youth in out-of-home care under DCF's Placement and Care Authority who were in care for at least 30 days as of the beginning of the report period, and turned 17.5 years during the specified calendar month. **3** To achieve compliance the multi-disciplinary staffing meeting must have been held between the age of 17 years to 17.5 years or within 30 days of turning 17.5 and be documented accurately in FamLink. **4** The number of children in care >30 days that turn 17.5 years each month, statewide and particularly by region, is a limited number and should be interpreted with caution.

SUMMARY

- In November 2010 the methodology for this report was revised to better reflect performance with CA policy and the federal standard (See data notes for additional information).
- Performance for holding a multi-disciplinary transition staffing at least six months prior to a youth's exit from foster care to address youth's transition to independence was 30% in September 2010.
- Region 4 was the highest performer in September 2010 at 60%.
- Performance has fluctuated with marked improvement since last August 2009. Trend line shows pattern of short periods of improvement followed by a decrease; with improvement over time.
- A new monthly FamLink management report was published in August 2010 and is beginning to help managers identify and monitor performance and target improvement activities.
- In September 2010, social workers began receiving email notifications when a youth turns 17 years old with a reminder to set up a Transition staffing. Regions also received a list of youth turning 17 years in the next 6 months.
- The Youth Transition Planning policy and form were updated to incorporate new requirements.
- Data clean-up activities are in process as FamLink documentation issues are resolved.

ACTION PLAN

- Ongoing use of new FamLink Management report to monitor and analyze performance.
- Implement quality assurance tracking system to help ensure youth receive transition staffings.

Children's Administration

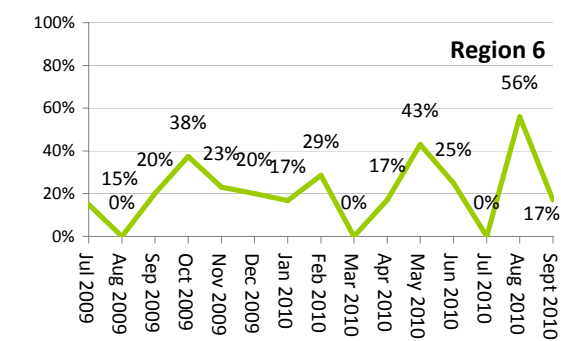
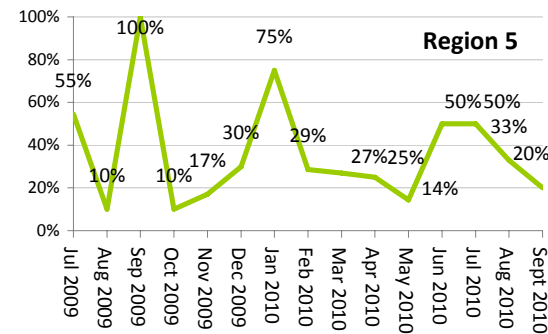
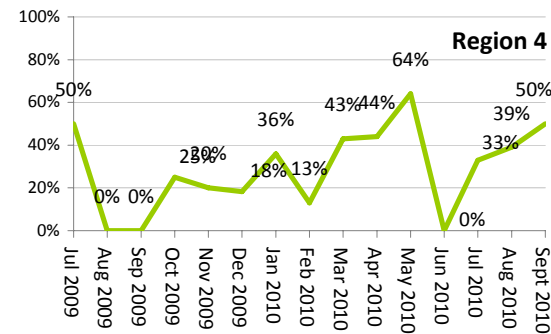
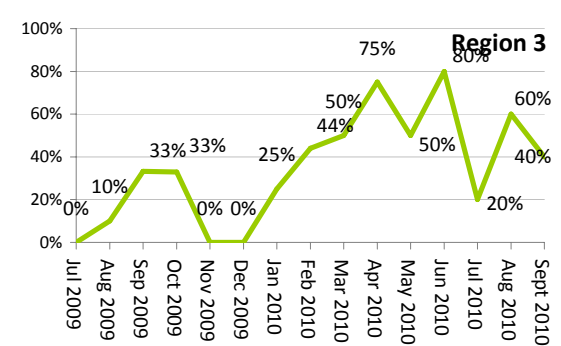
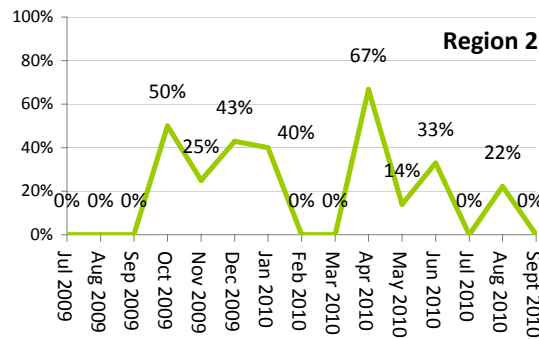
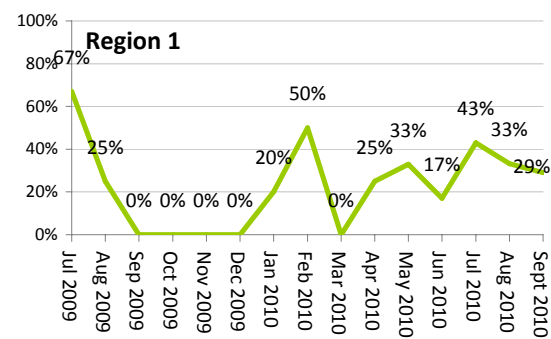
PERFORMANCE MEASURE

[TO DATA CHART](#)

Youth Transition (Exit) Staffings (Services to Adolescents, Goal 2, Outcome 3)

A multi-disciplinary staffing meeting will be held six months prior to a youth's exit from foster care to address issues related to transition to independence.

Regional Trends



Children's Administration

Youth Transition (Exit) Staffings (Services to Adolescents, Goal 2, Outcome 3)

A multi-disciplinary staffing meeting will be held six months prior to a youth's exit from foster care to address issues related to transition to independence.

Measure definition	Percentage of multi-disciplinary staffing meeting that are held at least six months prior to a youth's exit from foster care to address issues related to their transition to independence.
Data source	FamLink run date 11/1/10 with data as of 10/29/10
Data supplier	Lee Doran, Lead Analyst, Children's Administration
Next update	December 2010
Frequency	Monthly
Data notes	<p>1 In November 2010 the methodology for this report was revised to count as compliant staffings between the age of 17 years and 17.5 years and exclude in compliance count staffings that occur prior to 17 years (CA policy) and group staffings within 90 days of turning 18 years (Federal standard currently counted as non-compliance for the Braam measure).</p> <p>2 Population includes all youth in out-of-home care under DCFS Placement and Care Authority who were in care for at least 30 days as of the beginning of the report period, and turned 17.5 years during the specified calendar month.</p> <p>3 To achieve compliance the multi-disciplinary staffing meeting must have been held between the age of 17 years to 17.5 years or within 30 days of turning 17.5 and be documented accurately in FamLink.</p> <p>4 The number of children in care >30 days that turn 17.5 years each month, statewide and particularly by region, is a limited number and should be interpreted with caution.</p>

DATA

DATE	Statewide Rate	TARGET	Compliant Staffings	Staffing Held Before 17 or Between 17.6 - 17.8 Years	Staffing Held within 90 Days of 18 Years	No Staffing Documented	Total Non-Compliance	Total Youth 17.5 Years	Region 1	Region 2	Region 3	Region 4	Region 5	Region 6
Jul 2009	33%	95%	14	2 (5%)	12 (28%)	14 (33%)	31 (67%)	42	67%	0%	0%	50%	55%	15%
Aug 2009	8%	95%	3	5 (13%)	22 (55%)	10 (25%)	43 (93%)	44	25%	0%	10%	0%	10%	0%
Sep 2009	16%	95%	5	6 (19%)	10 (32%)	10 (32%)	28 (85%)	31	0%	0%	33%	0%	100%	20%
Oct 2009	22%	95%	8	9 (44%)	12 (32%)	8 (22%)	26 (68%)	37	0%	50%	33%	25%	10%	38%
Nov 2009	15%	95%	6	14 (35%)	13 (33%)	7 (18%)	35 (83%)	40	0%	25%	0%	20%	17%	23%
Dec 2009	22%	95%	10	18 (49%)	6 (13%)	11 (24%)	38 (75%)	45	0%	43%	0%	18%	30%	20%
Jan 2010	33%	95%	13	8 (21%)	4 (10%)	14 (36%)	27 (69%)	39	20%	40%	25%	36%	75%	17%
Feb 2010	29%	95%	10	7 (21%)	5 (15%)	12 (35%)	24 (71%)	34	50%	0%	44%	13%	29%	29%
Mar 2010	28%	95%	14	7 (14%)	7 (14%)	21 (43%)	36 (75%)	49	0%	0%	50%	43%	27%	0%
Apr 2010	38%	95%	13	3 (9%)	5 (15%)	13 (38%)	19 (59%)	34	25%	67%	75%	44%	25%	17%
May 2010	40%	95%	18	2 (4%)	5 (11%)	20 (44%)	29 (63%)	45	33%	14%	50%	64%	14%	43%
Jun 2010	34%	95%	11	5 (16%)	0 (0%)	16 (50%)	22 (67%)	32	17%	33%	80%	0%	50%	25%
Jul 2010	33%	95%	12	5 (14%)	2 (6%)	17 (47%)	26 (76%)	36	43%	0%	20%	33%	50%	0%
Aug 2010	40%	95%	19	7 (15%)	0 (0%)	22 (46%)	28 (60%)	48	33%	22%	60%	39%	33%	56%
Sept 2010	30%	95%	11	2 (5%)	0 (0%)	24 (65%)	28 (60%)	37	29%	0%	40%	50%	20%	17%

Children's Administration

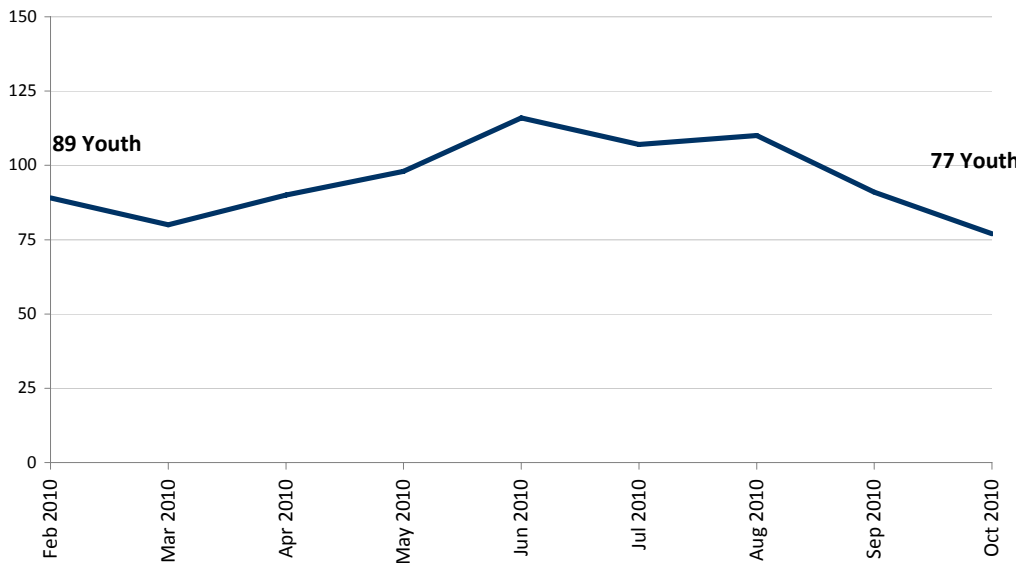
PERFORMANCE MEASURE

[TO DATA CHART](#)

Youth Runaway Counts (Alternative Measure: Services to Adolescents, Goal 3, Outcome 1)

The count of youth under CA Placement and Care Authority that are identified as being on runaway status on the last day of the month.

Statewide Counts



SUMMARY

- The number of youth on runaway status on the 25th day of October 2010 was 77 youth.
- October marked a decrease in the number of youth on runaway status from the summer months of June-August 2010 that ranged from 107-116 youth; reported to be an annual trend.
- Region 6 continues to have the highest number of youth on runaway status.
- A number of youth on runaway status in October 2010 were on their first run (22%, 17 youth). The majority had a history of running less than five times during their time in out-of-home care (64%, 50 youth). A significant number of youth are frequent runners with more than 6 incidents of runaway status during their time in care (35%, 27 youth).
- Data showing the last placement setting prior to the youth being on runaway status identified the following (in order of frequency):
 - Group Home, Therapeutic BRS/CHAP, Staffed Residential, Supervised Independent Living: 38% (29 youth)
 - Foster/Receiving Home: 34% (26 youth)
 - Crisis Residential Center (Unsecure/Secure): 4 (3%)
 - Relative (Unlicensed, Licensed, Other Suitable Person): 21 (16%)
 - Other/Unknown: 4 (3%)
- In September 2010, regional quality assurance review activities were

DATA SOURCE: FamLink; supplied by Sophia Kouido-Giles, Adolescent Special Projects Manager, Children's Administration

MEASURE DEFINITION: Count of youth under CA Placement and Care Authority that are identified as missing from care on the last day of the month.

DATA NOTES: **1** Population includes children/youth under CA Placement and Care Authority that are identified in FamLink on runaway status on the last day of the month (point in time). **2** This is alternative/supporting data for the Settlement Agreement outcome to reduce the percentage of adolescents on runaway status from foster care pending development of the outcome report for this measure. **3** Data report methodology is still under development. **4** The list of youth on runaway status is used for monthly quality assurance activities that were reinitiated in February 2010 after a break during the FamLink transition period.

ACTION PLAN

- Continue to strengthen quality assurance review activities.
- Continue to identify and analyze potential factors associated with yo
- Develop and use a new FamLink management report beginning in Jar

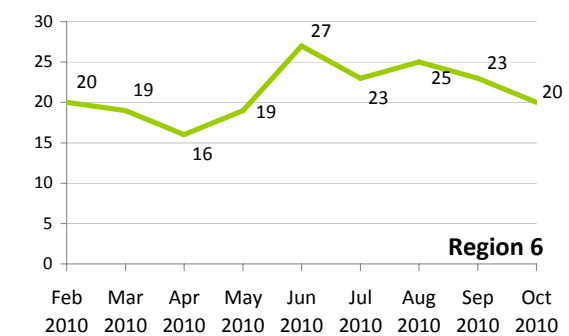
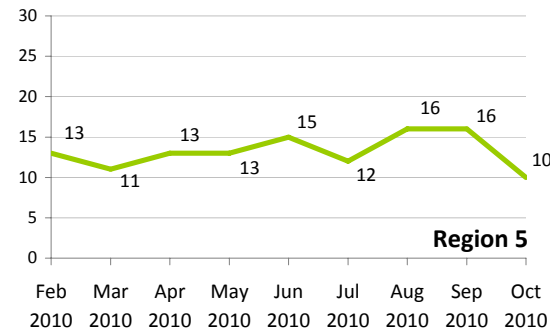
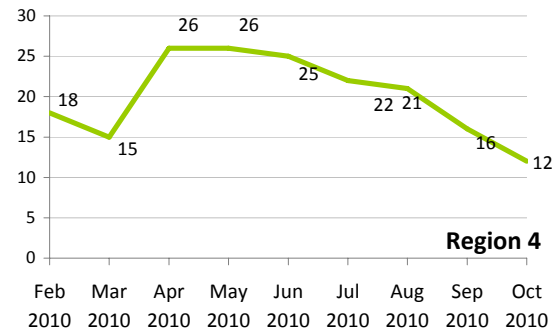
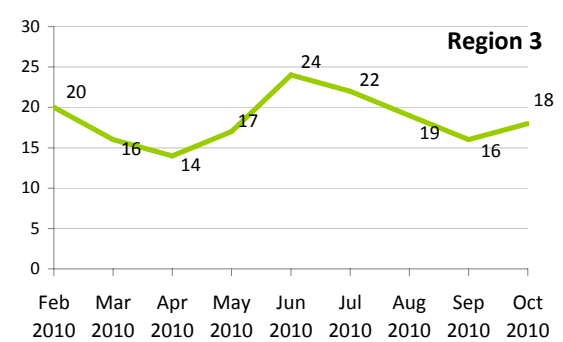
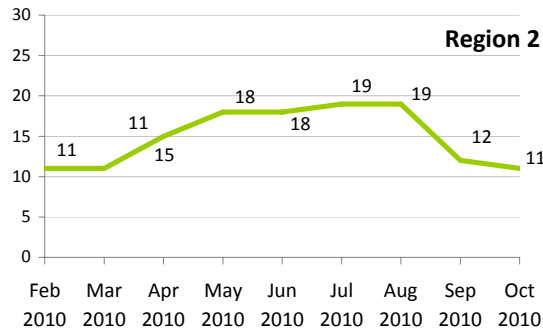
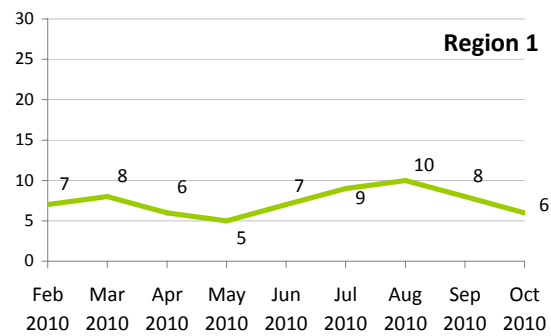
Children's Administration

PERFORMANCE MEASURE [TO DATA CHART](#)

Youth Runaway Counts (Alternative Measure: Services to Adolescents, Goal 3, Outcome 1)

The count of youth under CA Placement and Care Authority that are identified as being on runaway status on the last day of the month.

Regional Trends



Children's Administration

Youth Runaway Counts (Alternative Measure: Services to Adolescents, Goal 3, Outcome 1)

Alternative measure for outcome to reduce the percentage of adolescents on runaway status from foster care.

Measure definition	Count of youth under CA Placement and Care Authority that are identified on runaway status on the last day of the month.
Data source	FamLink run date 10/25/10
Data supplier	Sophia Kouidou-Giles, Adolescent Special Projects Manager, Children's Administration
Next update	December 2010
Frequency	Monthly
Data notes	<p>1 Population includes children/youth under CA Placement and Care Authority that are identified in FamLink on runaway status on the last day of the month (point in time). Sept 2010 and Oct 2010 and all future reports will be based on data extracted on the 25 day of the month to provide the regions and statewide lead additional time to complete QA activities.</p> <p>2 This is alternative/supporting data for the Settlement Agreement outcome to reduce the percentage of adolescents on runaway status from foster care pending development of the outcome report for this measure.</p> <p>3 Data report methodology is still under development.</p> <p>4 The list of youth on runaway status is used for monthly quality assurance activities that were reinitiated in February 2010 after a break during the FamLink transition period.</p>

DATA

DATE	Statewide Count of Youth on Runaway Status	TARGET	Region 1	Region 2	Region 3	Region 4	Region 5	Region 6
Feb 2010	89	N/A	7	11	20	18	13	20
Mar 2010	80	N/A	8	11	16	15	11	19
Apr 2010	90	N/A	6	15	14	26	13	16
May 2010	98	N/A	5	18	17	26	13	19
Jun 2010	116	N/A	7	18	24	25	15	27
Jul 2010	107	N/A	9	19	22	22	12	23
Aug 2010	110	N/A	10	19	19	21	16	25
Sep 2010	91	N/A	8	12	16	16	16	23
Oct 2010	77	N/A	6	11	18	12	10	20

Children's Administration

Youth Runaway Counts (Alternative Measure: Services to Adolescents, Goal 3, Outcome 1)

Alternative measure for outcome to reduce the percentage of adolescents on runaway status from foster care.

Measure definition	Count of youth under CA Placement and Care Authority that are identified on runaway status on the last day of the month.
Data source	FamLink run date 10/25/10
Data supplier	Sophia Kouidou-Giles, Adolescent Special Projects Manager, Children's Administration
Next update	December 2010
Frequency	Monthly
Data notes	<p>1 Population includes children/youth under CA Placement and Care Authority that are identified in FamLink on runaway status on the last day of the month (point in time). Sept 2010 and Oct 2010 and all future reports will be based on data extracted on the 25 day of the month to provide the regions and statewide lead additional time to complete QA activities.</p> <p>2 This is alternative/supporting data for the Settlement Agreement outcome to reduce the percentage of adolescents on runaway status from foster care pending development of the outcome report for this measure.</p> <p>3 Data report methodology is still under development.</p> <p>4 The list of youth on runaway status is used for monthly quality assurance activities that were reinitiated in February 2010 after a break during the FamLink transition period.</p>

DATA

Frequency of Runs for Each Youth	October 2010 Statewide	Region 1	Region 2	Region 3	Region 4	Region 5	Region 6
1	17 (22%)	0	3	7	2	3	2
2	15 (19%)	0	3	2	3	2	5
3	3 (4%)	0	1	0	0	0	2
4	11 (14%)	4	2	2	0	1	2
5	4 (5%)	0	1	2	0	0	1
6-10	11 (14%)	1	1	3	2	2	2
11-15	10 (13%)	1	0	2	3	1	3
16-20	6 (8%)	0	0	0	2	1	3

Children's Administration

Youth Runaway Counts (Alternative Measure: Services to Adolescents, Goal 3, Outcome 1)

Alternative measure for outcome to reduce the percentage of adolescents on runaway status from foster care.

Measure definition	Count of youth under CA Placement and Care Authority that are identified on runaway status on the last day of the month.
Data source	FamLink run date 10/25/10
Data supplier	Sophia Kouidou-Giles, Adolescent Special Projects Manager, Children's Administration
Next update	December 2010
Frequency	Monthly
Data notes	<p>1 Population includes children/youth under CA Placement and Care Authority that are identified in FamLink on runaway status on the last day of the month (point in time). Sept 2010 and Oct 2010 and all future reports will be based on data extracted on the 25 day of the month to provide the regions and statewide lead additional time to complete QA activities.</p> <p>2 This is alternative/supporting data for the Settlement Agreement outcome to reduce the percentage of adolescents on runaway status from foster care pending development of the outcome report for this measure.</p> <p>3 Data report methodology is still under development.</p> <p>4 The list of youth on runaway status is used for monthly quality assurance activities that were reinitiated in February 2010 after a break during the FamLink transition period.</p>

DATA

Last Placement Type	Statewide	Region 1	Region 2	Region 3	Region 4	Region 5	Region 6
Foster/Receiving Home	26 (34%)	2	2	8	7	2	5
Group Home, Therapeutic BRS/CHAP, Staffed Residential, Supervised Independent Living	29 (38%)	4	1	6	3	5	10
Crisis Residential Center (Unsecure/Secure)	3 (4%)	0	2	1	0	0	0
Relative (Unlicensed, Licensed, Other Suitable Person)	16 (21%)	0	5	2	2	3	4
Other/Unknown	3 (4%)	1	0	1	0	0	1