

**BRAAM SETTLEMENT
INFORMATIONAL MONTHLY & QUARTERLY DATA
ADDENDUM TO MONITORING REPORT #9**

NOVEMBER 30, 2010

Provides informational monthly & quarterly data for
selected Braam outcomes





Braam Oversight Panel

The Braam Oversight Panel was created in 2004 to oversee a Settlement regarding Washington State's foster care system. The Settlement was reached after a six-year period of litigation. The named Plaintiff, Jessica Braam, is an adult who lived in 34 foster homes by the time the suit was filed in 1998. The Settlement is intended to improve the conditions and treatment of children in the custody of the state's Division of Children and Family Services. According to Children's Administration, as of July 2010, there were 10,843 children in the Braam class.

The Panel was created to monitor improvements in selected services and ensure quality standards are met during the seven year duration of the settlement. This independent Panel was mutually selected by the parties (the Plaintiffs who filed the lawsuit and the state of Washington). The Panel, working in collaboration with the Department of Social and Health Services (DSHS) and with substantial input from the Plaintiffs and other stakeholders, issued an Implementation Plan for the six areas specified in the Settlement in February 2006. In July 2008, a Revised Braam Implementation Plan was published to reflect clarifications and modifications based on developments in the Braam process and discussions with DSHS, the plaintiffs and stakeholders.

This document is an addendum to Monitoring Report #9, and provides informational monthly & quarterly data on selected Braam outcomes.

Members

John Landsverk, Chair

Jeanine Long

Jan McCarthy

Jess McDonald

Dorothy Roberts

Carrie Whitaker Hennen, Executive Coordinator
Box 354900
4101 15th Ave NE
Seattle, WA 98105-6299

Phone: (206) 616-0390
FAX: (206) 543-1228
E-mail: carwhit@u.washington.edu
Website: www.braampanel.org

TABLE OF CONTENTS

Overview	2
Introduction- Monthly/ Quarterly Informational Data.....	5
Monthly/ Quarterly Informational Data for Selected Braam Outcomes	
Placement Stability.....	8
Mental Health.....	11
Foster Parent Training and Information.....	18
Unsafe and Inappropriate Placements.....	19
Sibling Separation.....	23
Services to Adolescents.....	26
Appendix I- Children’s Administration Monthly Reports (November 2010)	
Appendix II- Children’s Administration Quarterly Reports (October 2010)	

[Page left blank intentionally.]

OVERVIEW

The Braam Oversight Panel was created in December 2004 to oversee a settlement agreement (Settlement) regarding Washington State's foster care system. The Settlement was reached after a six-year period of litigation.¹ The parties to the Settlement include the Plaintiffs,² who filed the lawsuit, and the State of Washington, respondents to the lawsuit.

The final Settlement created an independent oversight panel (the "Panel") that was mutually selected by the parties. The members include:

- A former child welfare administrator;
- A child welfare researcher;
- An expert in children's mental health; and
- Two additional members.

The Settlement directed the Panel to establish professional standards, outcomes, benchmarks, and action steps to improve the treatment of, and conditions for, children in the custody of DCFS, and to monitor the Department's performance under this Settlement (Settlement, page 1). The intent of the Settlement, and the Panel's work, is summarized on the first page of the Settlement:

"The parties enter into this Agreement with the recognition that both parties and their counsel have committed to enter into specific, measurable, and enforceable agreements with the goal of improving the conditions and treatment of children in the custody of the Division of Children and Family Services."

Over 50 provisions from Kids Come First II, the comprehensive reform plan for children's services in place at the Department at the time the agreement was reached, were incorporated directly into the Settlement. The Settlement also addressed numerous issues included in state law.

Settlement Definitions

The Settlement defines the Plaintiff class as follows:

- **"Child" or "Children" in foster care** means children in the custody of DCFS. For the outcomes, benchmarks, and actions steps, this term refers to children in the Plaintiff Class, defined as all children in the custody of DCFS who are now or in the future will be placed by DCFS in three or more placements and those children in the custody of DCFS who are at risk of three or more placements. The Panel interprets this definition to include all children in the custody of DCFS.

According to Children's Administration, as of July 2010, there were 10,843 children in the Braam class.

- **"Department"** means the Department of Social and Health Services. In terms of responsibilities related to the Settlement, the most relevant divisions are the Children's Administration and Health and Recovery Services (including the Division of Mental Health and the Division of Alcohol and Substance Abuse).

¹ The Final Settlement is available on the Braam Panel website: www.braampanel.org.

² The Plaintiffs' attorneys include Columbia Legal Services, the National Center for Youth Law, and Tim Farris, a Bellingham lawyer who initiated the case.

The Settlement established goals in six areas:

- **Placement Stability:** Every child will have a safe and stable placement with a caregiver capable of meeting the child's needs.
- **Mental Health:** Children shall have initial physical and mental health screenings within 30 days of entry into care. The child's case plan will include plans to meet their special needs. Children shall receive timely, accessible, individualized, and appropriate mental health assessments and treatment by qualified mental health providers. Continuity of treatment providers will be maintained.
- **Foster Parent Training and Information:** Caregivers shall be adequately trained, supported, and informed about children in their care. The Department shall provide accessible pre-service and in-service training to all caregivers sufficient to meet the caregiving needs of children in placement.
- **Unsafe/Inappropriate Placements:** All children shall be placed in safe placements. The state shall continue to meet or exceed the federal standard for out-of-home care.
- **Sibling Separation:** Placement of siblings together is presumed to be in the children's best interest unless there is a reasonable basis to conclude that the health, safety, or welfare of a child is put in jeopardy by the placement. Frequent and meaningful contact between siblings in foster care who are not placed together and those who remain at home should occur unless not in child's best interest.
- **Services to Adolescents:** Improve the quality and accessibility of services to adolescents. Improve the educational achievements of these adolescents and better prepare them to live independently. Reduce the number of adolescents on runaway status from foster care.

Collaboration and Consultation

The Settlement directs the Panel to conduct its work "in collaboration with the Department, and with substantial input from Plaintiffs, and other stakeholders as necessary" (Settlement, page 3). The Settlement also provides that "in carrying out all of its general and specific duties, the Panel shall make independent decisions based on professional judgment and guided by knowledge of effective practice and an understanding of the public child welfare system in the State of Washington" (Settlement, page 3). In the Panel's view, the statements regarding "in collaboration with...and with substantial input from" and "independent decisions" establish a creative tension to its work. The Panel submits its reports for review and comment by the parties and other stakeholders, while reserving its independent and final decision-making for the structure, content, and wording of its reports.

The original Settlement specifies that the Panel "will comply with the Open Public Meetings Act, the Public Disclosure Act and all applicable confidentiality statutes and regulations" (Settlement, page 5). In February 2008, attorneys representing the Department and the plaintiffs formally amended the Settlement Agreement to facilitate the Panel's efforts to carry out its duties between public meetings. Based on this amendment, the Panel may hold non-public work sessions or phone meetings with advance notification of the parties and maintenance of meeting minutes. The Panel continues to meet publicly at least four times per year.³

In carrying out its duties, the Panel welcomes comments from stakeholders and tribal representatives. While the Department is ultimately responsible for achieving the Settlement requirements, community providers play a significant role in service delivery for children and families and have an important voice

³ Minutes of non-public Panel meetings and work sessions are available to the parties and the public by request. Information on public Panel meetings, including meeting schedules, agendas and minutes, are available on the Braam Panel website: www.braampanel.org.

and perspective to offer both the Department and the Panel. Collaboration with parents, relatives, and tribal representatives will help ensure quality decision-making for children; numerous provisions in both KCF II and the Settlement outcomes and action steps reinforce this value.

Panel Work Products

Under the Settlement, the Panel issues the following types of documents:⁴

- **Implementation Plan**, defining the specific and enforceable performances required by the Settlement. In February 2006, the Panel published the Braam Settlement Implementation Plan. This document was developed through extensive public meetings and collaboration with DSHS and input from plaintiffs' counsel, and incorporated many recommendations and responses to previous draft documents from both parties and stakeholders.

The Revised Implementation Plan (July 3, 2008) includes clarifications and modifications based on developments in the Braam process and discussions with DSHS, the plaintiffs and stakeholders during 2006 and 2007.

- **Monitoring Reports**, measuring progress toward the Settlement goals, outcomes, benchmarks, and action steps for each six-month period. Under the agreement, the Panel is expected to "monitor the Department's progress with the specific Outcomes, Benchmarks, and Action Steps identified in this Agreement or as part of its implementation." (Settlement, page 4).

The Panel began publishing progress reports in March 2006. Subsequent reports were released in September 2006, April 2007, October 2007, October 2008, March 2009, October 2009, March 2010 and September 2010. Pursuant to the Settlement Agreement, the Panel will continue to publish monitoring reports every six months through the duration of the agreement.

- **Decisions on Compliance Plans**, in which the Panel issues decisions on plans proposed by the Department to achieve compliance in areas in which the Panel has determined that adequate progress has not been made.
- **Professional Standards**, which "the parties agree will be the Professional Standards used in any enforcement proceeding" (Settlement, page 4). After significant input from the Department and the plaintiffs, the Panel published professional standards in March 2007.

⁴ All Panel work products are available on the Braam Panel website at www.braampanel.org. Individuals and organizations can sign up to receive email alerts when new material is posted.

INTRODUCTION- MONTHLY/ QUARTERLY INFORMATIONAL DATA

As detailed in the Revised Braam Implementation Plan, the Braam Panel has set benchmarks for performance and assesses compliance for Braam outcomes on an annual basis. However, in August 2010, the Panel and the parties agreed that the Department will submit monthly or quarterly data updates for selected outcomes in order to provide more timely and frequent information about progress and to allow for a better understanding of whether strategies set forth in compliance plans are leading to improved performance. This report is an addendum to Monitoring Report #9 (September 2010) and is the first report to present monthly and quarterly data for selected Braam outcomes.

The Panel considers these data to be informational and will not use these data to assess compliance with annual benchmarks. The Panel will continue to monitor compliance with outcomes based on annual performance data. Therefore, no assessment of compliance is included in this report.

This report provides informational monthly and/or quarterly data for the outcomes listed below. These outcomes were identified by the Braam Panel for more frequent submission of data because Braam benchmarks were not met in FY09 and/ or because of concerns about lack of progress toward the benchmarks.

Monthly reports

- *Placement Stability, Goal 1, Outcome 3- Caseload size*
- *Mental Health, Goal 1, Outcome 2- CHET screenings*
- *Mental Health, Goal 1, Outcome 3- Shared Planning Meetings focused on CHET within 60 days of entry*
- *Mental Health, Goal 1, Outcome 4- Referral to Early Support for Infant and Toddlers Program (early intervention)*
- *Unsafe and Inappropriate Placements, Goal 1, Outcome 6- Monthly visits (report on alternative measure)*
- *Services to Adolescents, Goal 2, Outcome 3- Exit staffings*

Quarterly reports

- *Placement Stability, Goal 1, Outcome 2- Two or fewer placements (report on alternative measures)*
- *Mental Health, Goal 2, Outcome 2- Health & education plans in ISSPs updated every 6 months*
- *Foster Parent Training and Information, Goal 1, Outcome 2- Adequate foster parent support*
- *Unsafe and Inappropriate Placements, Goal 1, Outcome 3- Sexually Aggressive Youth*
- *Unsafe and Inappropriate Placements, Goal 1, Outcome 4- Physically Aggressive/ Assaultive Youth*
- *Unsafe and Inappropriate Placements, Goal 2, Outcome 2- DLR/ CPS investigations (report on alternative measure)*
- *Sibling Separation, Goal 1, Outcomes 1 and 2- Placement with all siblings; Placement with some/ all siblings*
- *Sibling Separation, Goal 2, Outcome 1- Sibling visits and contacts*
- *Services to Adolescents, Goal 3, Outcome 1- Frequency of runaways (report on alternative measure)*

Note that these monthly and quarterly informational reports are being provided in addition to annual reports, informational reports, and informational race data required under the Braam Implementation Plan.

Format of this report

This report includes only Braam outcomes for which the Panel and the parties have agreed that informational data will be submitted on a monthly or quarterly basis, in addition to the annual reports required under the Revised Implementation Plan. The selected outcomes are identified above.

For each outcome, the outcome as stated in the Revised Implementation Plan is noted. In the next row, a summary of the most recent annual performance data as well as the next (FY10) benchmark is provided. This information was provided in Monitoring Report #9 and is included here for context; it does not represent new data or new findings. Beneath the summary of annual performance data, monthly or quarterly data (depending on the timeframes agreed to by the Panel and the Department) are displayed. The measure is identified, and data are provided in a chart format showing trends over time.

Detailed data reports from Children's Administration, including data notes and data by region, can be found in the appendices.

Next Steps

The Panel's next Monitoring Report will be issued in March 2011. This report will address action steps through December 31, 2010, and will provide data and findings with respect to achievement of benchmarks for Braam outcomes for FY10 (July 1, 2009- June 30, 2010). In addition, the March 2011 report will provide informational reports related to Braam outcomes as required by the Revised Implementation Plan, and informational reports on Braam outcomes by race/ ethnicity for FY10.

[Page left blank intentionally.]

PLACEMENT STABILITY- MONTHLY/ QUARTERLY INFORMATIONAL DATA

Goal 1, Outcome 2

The percentage of children who experience two or fewer placements during their current out-of-home episode of care will increase (*outcome measure based on percentage of youth entering care during the two previous fiscal years with 2 or fewer placements, with time-in-care specifications based on entry year*).

Most Recent Annual Performance Data

FY09 Benchmark: 89%
FY09 Performance: 80.9%

Failed to reach FY09 benchmark

Compliance plan approved May 2010

Next Steps in Monitoring Compliance

- Data for FY10 will be published in March 2011 Monitoring Report
- FY10 Benchmark is 90%
- FY10 performance would need to increase 9.1 percentage points from FY09 to meet FY10 benchmark

Quarterly Data (Alternative Measure)

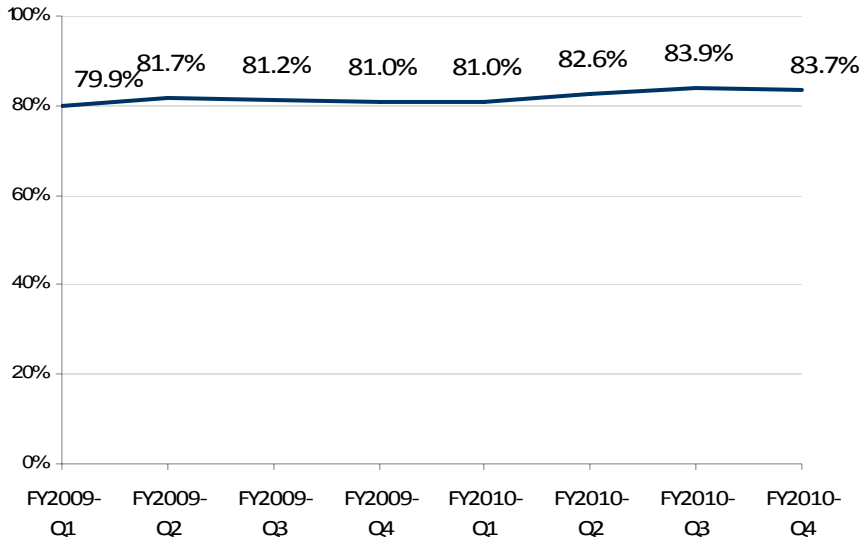
Notes:

- Quarterly data on two alternative measures were provided in October 2010. *These measures are stated below, and are not directly comparable to the Braam measure.* Quarterly data on the Braam measure will be provided beginning in January 2011.
- See p. 26-31, Appendix II for detailed report and information by region

Measure: Percentage of children with fewer than three events (placements) in an episode for children in care less than one year (excluding children in care for less than eight days)

Data source: FamLink

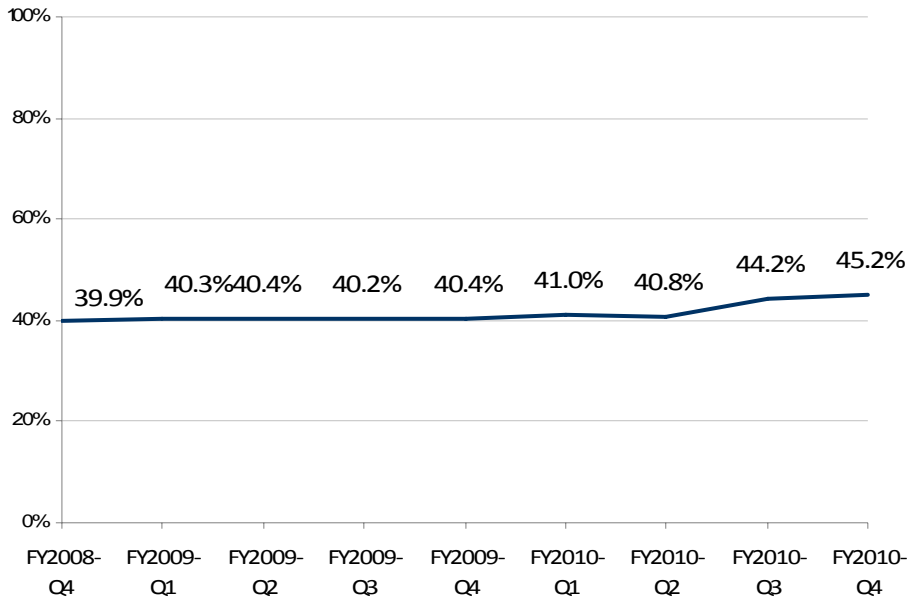
Statewide Performance, Placement Stability (First Year)



Measure: Percentage of children currently in care who have not moved within 12 months of their previous move or their entry into placement; for all children in care at least one year.

Data source: FamLink

Statewide Performance, Placement Stability (Ongoing)



Goal 1, Outcome 3

Social workers will have caseloads at or below Council on Accreditation (COA) standards (18 child cases per caseworker) (*outcome measure based on the percentage of caseworkers with caseloads at or below COA standards*).

Most Recent Annual Performance Data	Next Steps in Monitoring Compliance
<p>FY09 Benchmark: 85% FY09 Performance: 65%</p> <p>Failed to reach FY09 benchmark</p> <p>Compliance plan approved May 2010</p>	<ul style="list-style-type: none"> ▪ Data for FY10 will be published in March 2011 Monitoring Report ▪ FY10 Benchmark is 90% ▪ FY10 performance would need to increase 25 percentage points from FY09 to meet FY10 benchmark

Monthly Data

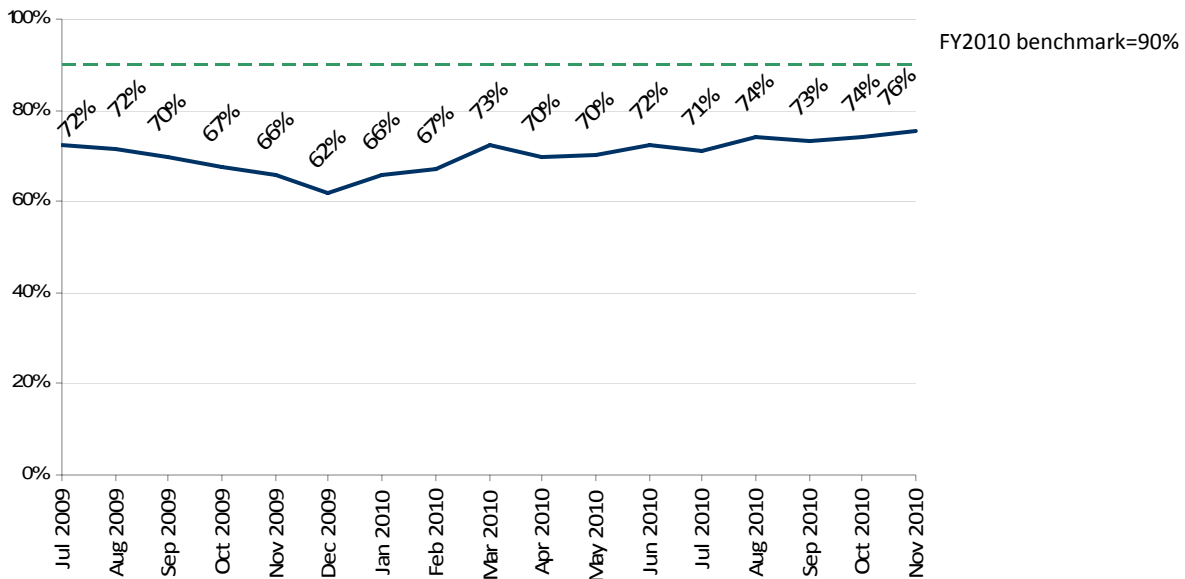
Notes:

- Data on Braam measure being provided on a monthly basis
- See p. 2-5, Appendix I for detailed report and information by region

Measure: Social workers will have caseloads at or below Council on Accreditation (COA) standards (18 child cases per worker).

Data source: FamLink

Statewide Performance, Caseload Size



MENTAL HEALTH- MONTHLY/ QUARTERLY INFORMATIONAL DATA

Goal 1, Outcome 2

Children in out-of-home care 30 days or longer will have completed and documented⁵ Child Health and Education Track (CHET) screens within 30 days of entering care.

Most Recent Annual Performance Data	Next Steps in Monitoring Compliance
<p>FY09 Benchmark: 80% FY09 Performance: 64%</p> <p>Failed to reach FY09 benchmark</p> <p>Compliance plan was approved in May 2010</p>	<ul style="list-style-type: none"> Data for FY10 will be published in March 2011 Monitoring Report FY10 Benchmark is 90% FY10 performance would need to increase 26 percentage points from FY09 to meet FY10 benchmark

Monthly Data

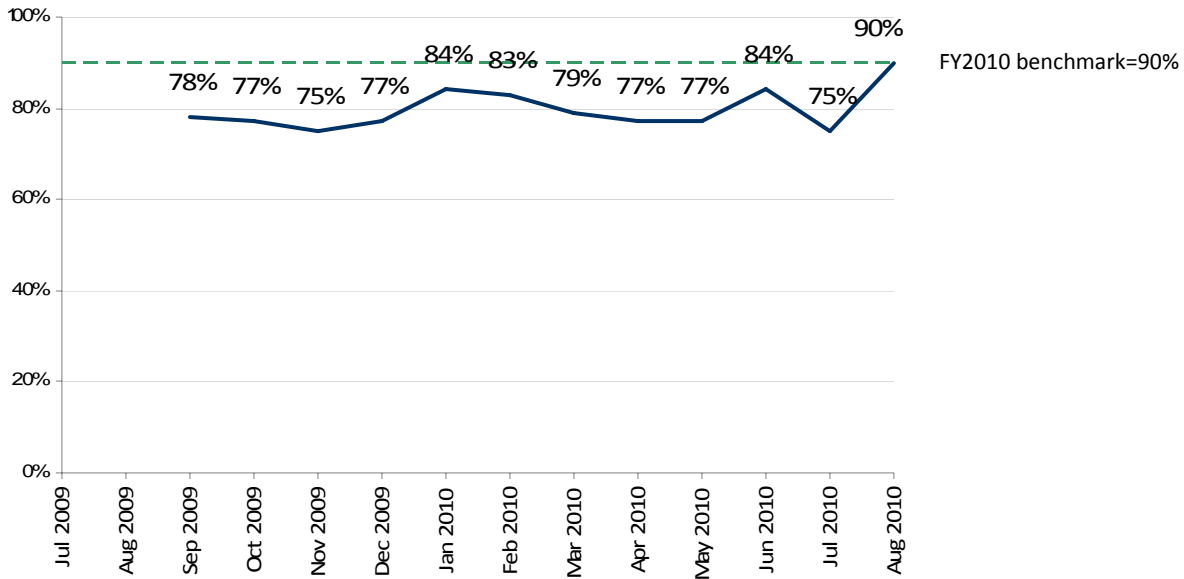
Notes:

- Data on Braam measure being provided on a monthly basis
- Data on each of 5 CHET domains being provided on a monthly basis
- See p. 11-26, Appendix I for detailed report and information by region

Measure: Children in out-of-home care 30 days or longer will have completed and documented Child Health and Education Track (CHET) screens within 30 days of entering care.

Data source: Statewide CHET database

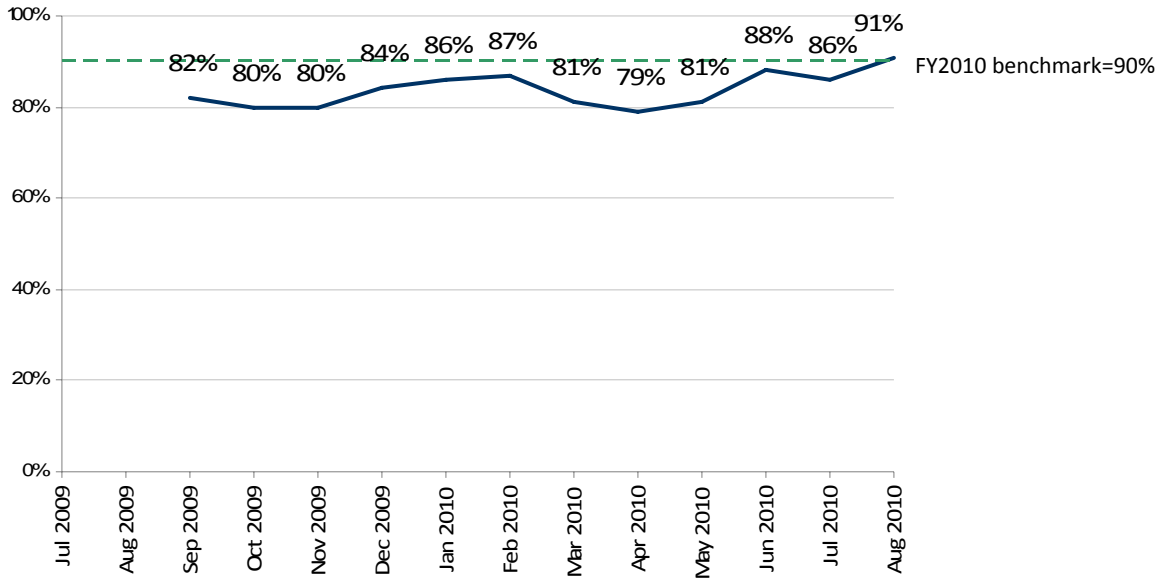
Statewide Performance, Overall CHET Completion



⁵ For Braam purposes, a completed and documented CHET is one in which age-appropriate screenings have been completed for all domains: Medical (EPSDT completed for all children); Developmental (developmental screening completed for children ages 0-60 months); Emotional-behavioral (screening completed for children ages 6-18 years); Educational (educational records received for school-aged children); and Connections (for all children).

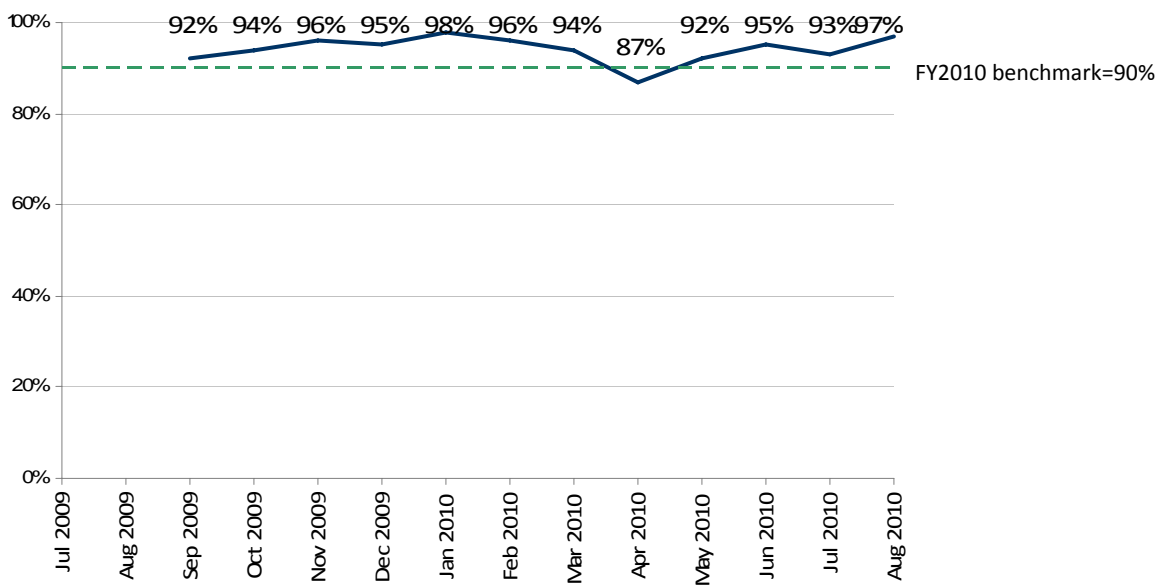
Measure: Percentage of children with completed EPSDT exams within 30 days of entry into care
Data source: Statewide CHET database

Statewide Performance, CHET Physical Health



Measure: Percentage of children ages 0-60 months with completed developmental screens within 30 days of entry into care.
Data source: Statewide CHET database

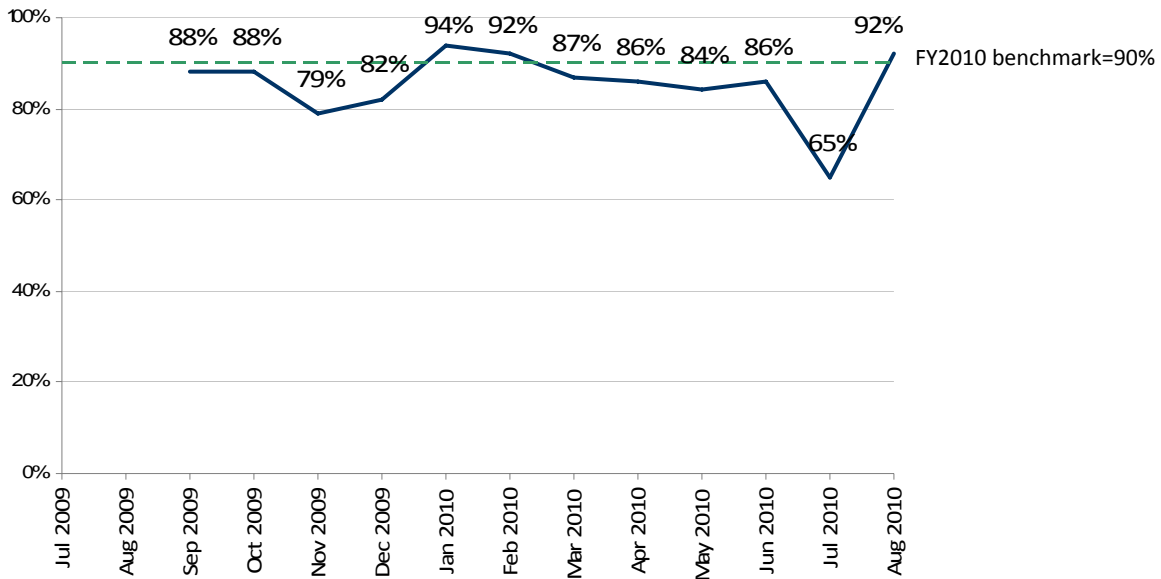
Statewide Performance, CHET Developmental



Measure: Percentage of school-aged children for whom educational records are received within 30 days of entry into care.

Data source: Statewide CHET database

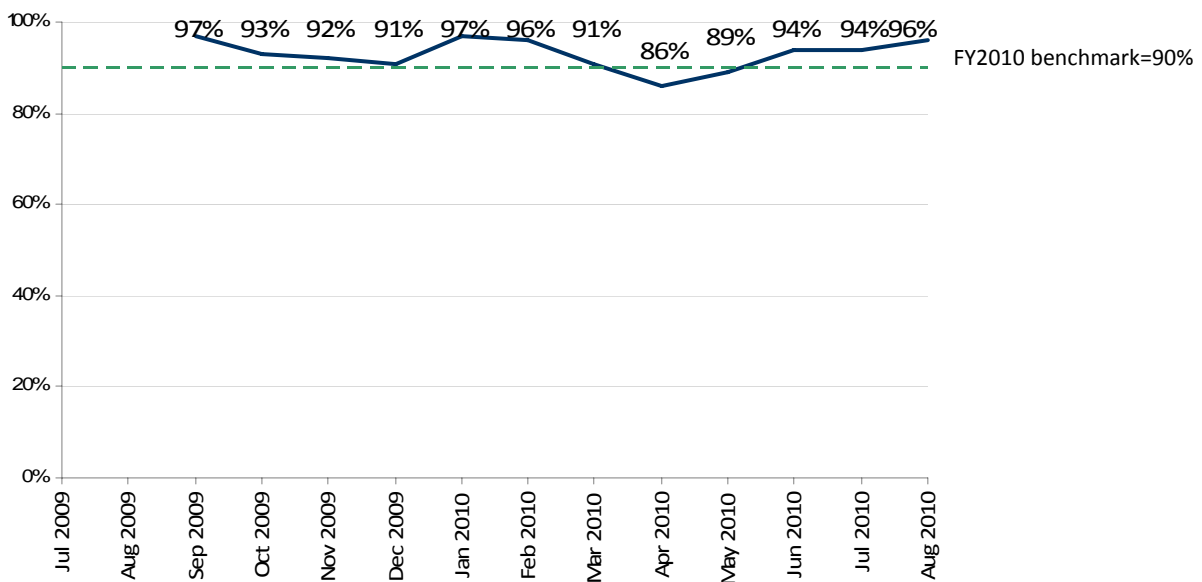
Statewide Performance, CHET Education



Measure: Percentage of children ages 6-18 years with completed emotional/ behavioral screening within 30 days of entry into care.

Data source: Statewide CHET database

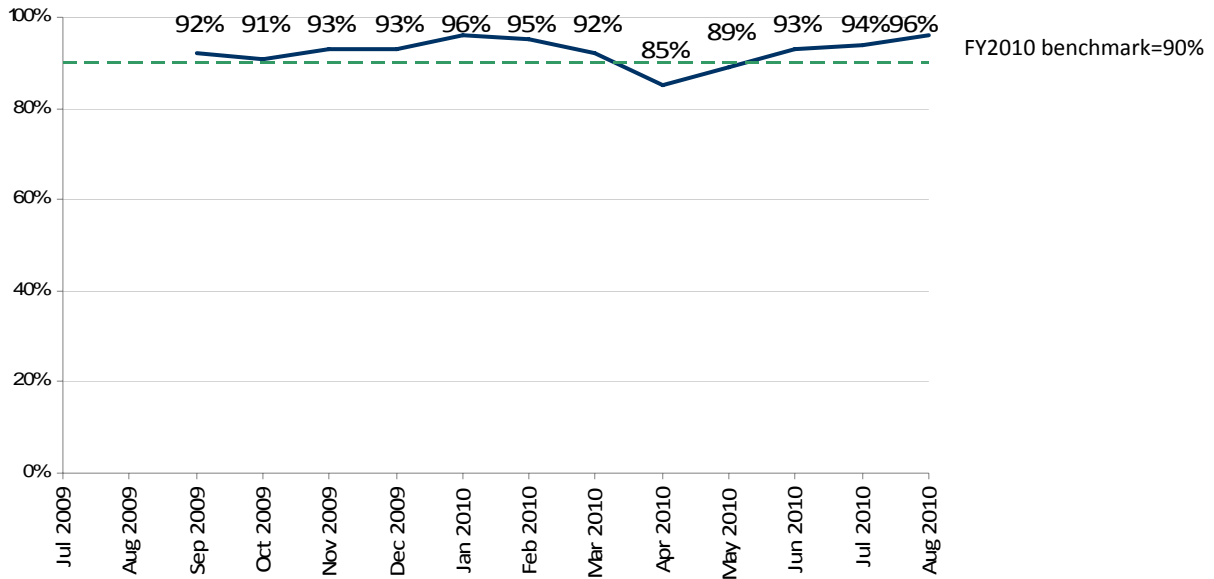
Statewide Performance, CHET Emotional/ Behavioral



Measure: Percentage of children with completed Connections within 30 days of entry into care.

Data source: Statewide CHET database

Statewide Performance, Connections



Goal 1, Outcome 3

A shared planning meeting (SPM) focusing on the CHET screening results will be held within 60 days of each child's entry into care.

Most Recent Annual Performance Data

FY09 Benchmark: 85%
FY09 Performance: Acceptable data not available

Failed to reach FY09 benchmark

Compliance plan was approved in August 2010

Next Steps in Monitoring Compliance

- Data for FY10 will be published in March 2011 Monitoring Report
- FY10 Benchmark is 90%

Monthly Data

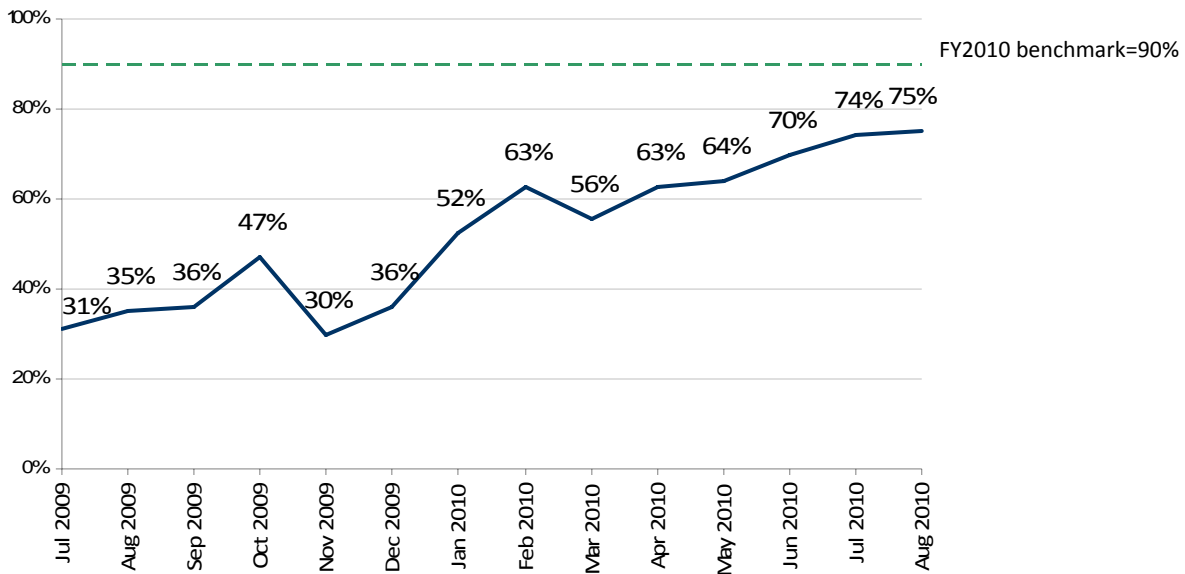
Notes:

- Data on Braam measure being provided on a monthly basis
- See p. 30-32, Appendix I for detailed report and information by region

Measure: A shared planning meeting (SPM) focusing on the CHET screening results will be held within 60 days of each child's entry into care.

Data source: FamLink and Statewide CHET database

Statewide Performance, CHET Shared Planning Meeting



Goal 1, Outcome 4

Children age 3 and under in out-of-home care will be referred to the Early Support for Infant and Toddlers Program (Early Intervention)⁶ within 2 workdays of identification of concerns about developmental delays from their CHET screens.

Most Recent Annual Performance Data	Next Steps in Monitoring Compliance
<p>FY09 Benchmark: 85% FY09 Performance: 72%</p> <p>Failed to reach FY09 benchmark</p> <p>Compliance plan approved in May 2010</p>	<ul style="list-style-type: none"> ▪ Data for FY10 will be published in March 2011 Monitoring Report ▪ FY10 Benchmark is 90% ▪ FY10 performance would need to increase 18 percentage points from FY09 to meet FY10 benchmark

Monthly Data

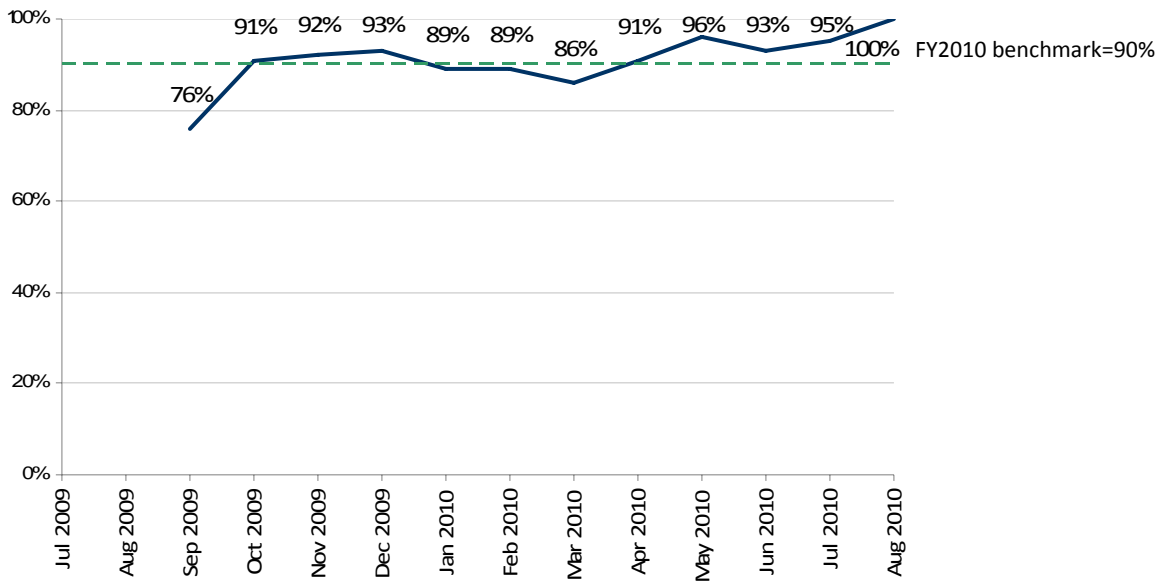
Notes:

- Data on Braam measure being provided on a monthly basis
- See p. 27-29, Appendix I for detailed report and information by region

Measure: Children age 3 and under in out-of-home care will be referred to the Early Support for Infant and Toddlers Program within 2 workdays of identification of concerns about developmental delays from their CHET screens.

Data source: Statewide CHET database

Statewide Performance, Referral to Early Intervention



⁶ This program was previously identified as the Infant Toddler Early Intervention Program (ITEIP).

Goal 2, Outcome 2

Children in out-of-home care will have health and education plans in their ISSPs updated every 6 months.

Most Recent Annual Performance Data

FY09 Benchmark: 80%
FY09 Performance: 63%

Failed to reach FY09 benchmark

Compliance plan approved in May 2010

Next Steps in Monitoring Compliance

- Data for FY10 will be published in March 2011 Monitoring Report
- FY10 Benchmark is 90%
- FY10 performance would need to increase 27 percentage points from FY09 to meet FY10 benchmark

Quarterly Data

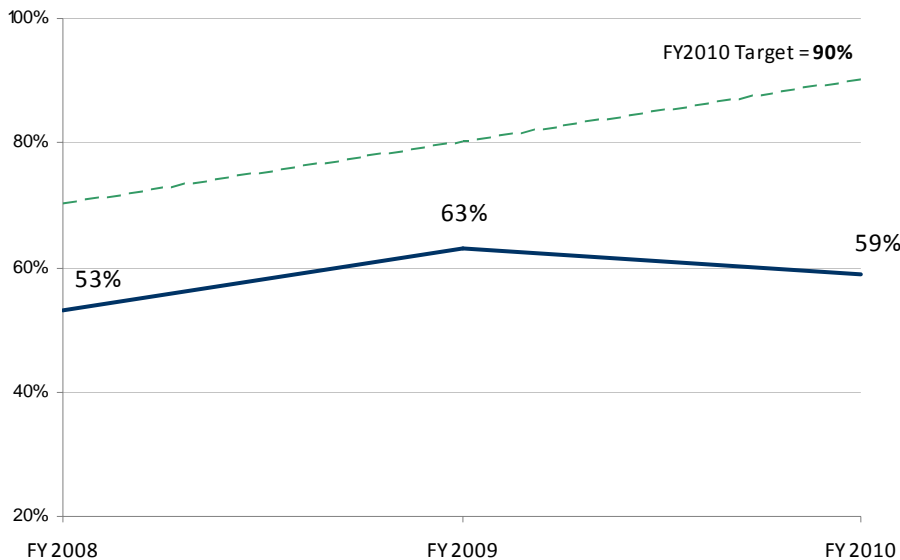
Notes:

- Data on Braam measure being provided on a quarterly basis. Data shown below are annual data through FY10; beginning in January 2011, quarterly data will be provided.
- See p. 5-7, Appendix II for detailed report and information by region

Measure: Percentage of randomly selected cases reviewed during the quarter rated compliant by the Central Case Record Review Team on the following review question: Did the health and education plan in the most recent Individual Safety and Service Plan (ISSP) address new and ongoing needs of the child identified in screenings and assessments?

Data source: Central Case Review Reports

Statewide Performance, Health and Education Plans Updated every 6 months



FOSTER PARENT TRAINING AND INFORMATION- OUTCOMES AND BENCHMARKS

Goal 1, Outcome 2

Licensed caregivers will report adequate support for their roles and responsibilities (including, but not limited to, crisis support, timely notification about case planning meetings, and cultural competency resources).

Most Recent Annual Performance Data

FY09 Benchmark: 85%
FY09 Performance: 71.9%

Failed to reach FY09 benchmark

Compliance plan approved in March 2010

Next Steps in Monitoring Compliance

- Data for FY10 will be published in March 2011 Monitoring Report
- FY10 Benchmark is 90%
- FY10 performance would need to increase 18.1 percentage points from FY09 to meet FY10 benchmark

Quarterly Data

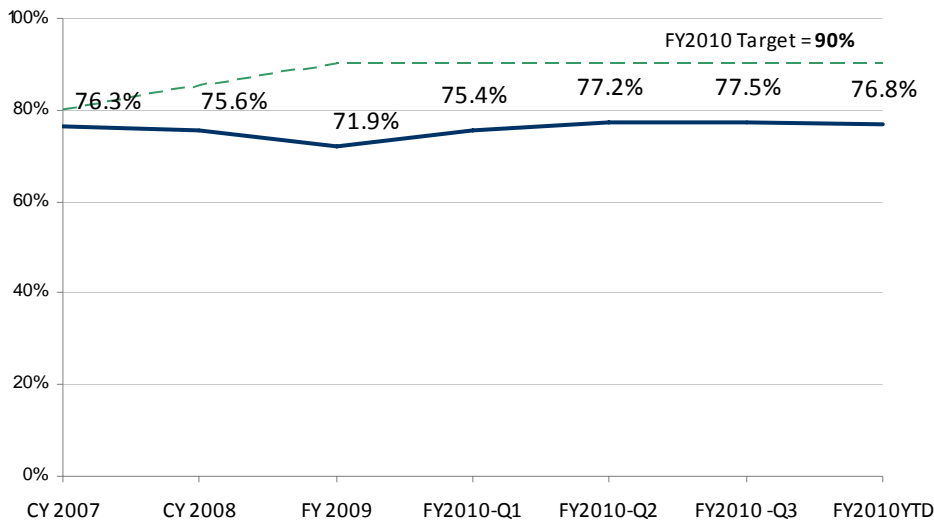
Notes:

- Data on Braam measure being provided on a quarterly basis
- See p. 14-16, Appendix II for detailed report

Measure: Licensed caregivers will report adequate support for their roles and responsibilities (including, but not limited to, crisis support, timely notification about case planning meetings, and cultural competency resources).

Data source: Foster Parent/ Caregiver Survey (administered by WSU)

Statewide Performance, Foster Parent Support



UNSAFE/ INAPPROPRIATE PLACEMENT- MONTHLY/ QUARTERLY INFORMATIONAL DATA

Goal 1, Outcome 3

Children identified as sexually aggressive (SAY) pursuant to the statutory definition will be placed with caregivers who have received specialized training and have a plan developed to address safety and supervision issues.

Most Recent Annual Performance Data

FY09 Benchmark: 95%
FY09 Performance: 70.3%

Failed to reach FY09 benchmark

Compliance plan approved in May 2010

Next Steps in Monitoring Compliance

- Data for FY10 will be published in March 2011 Monitoring Report
- FY10 Benchmark is 95%
- FY10 performance would need to increase 24.7 percentage points from FY09 to meet FY10 benchmark

Quarterly Data

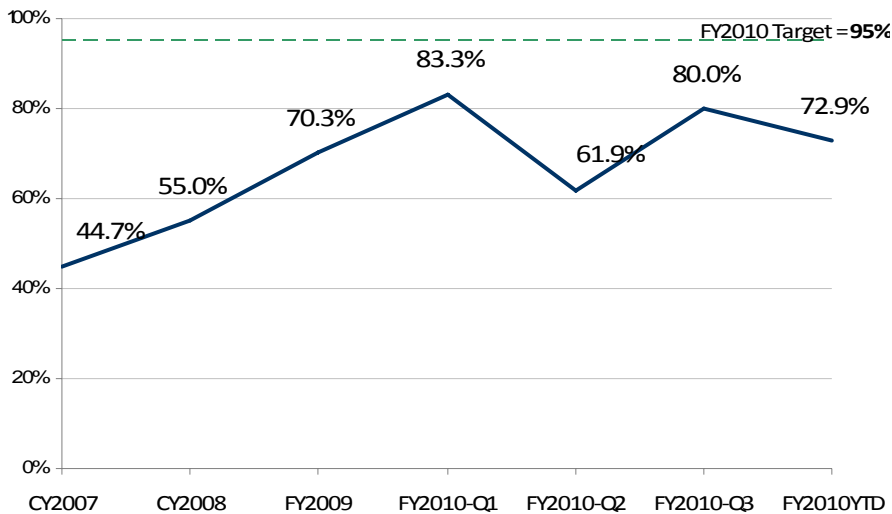
Notes:

- Data on Braam measure being provided on a quarterly basis
- See p. 8-10, Appendix II for detailed report

Measure: Children identified as sexually aggressive (SAY) pursuant to the statutory definition will be placed with caregivers who have received specialized training and have a plan developed to address safety and supervision issues.

Data source: Foster Parent/ Caregiver Survey (administered by WSU)

Statewide Performance, SAY



Goal 1, Outcome 4

Children identified as physically assaultive or physically aggressive (PAY) pursuant to the statutory definition will be placed with caregivers who have received specialized training and have a plan developed to address safety and supervision issues.

Most Recent Annual Performance Data

FY09 Benchmark: 95%
FY09 Performance: 52.9%

Failed to reach FY09 benchmark

Compliance plan approved in May 2010

Next Steps in Monitoring Compliance

- Data for FY10 will be published in March 2011 Monitoring Report
- FY10 Benchmark is 95%
- FY10 performance would need to increase 42.1 percentage points from FY09 to meet FY10 benchmark

Quarterly Data

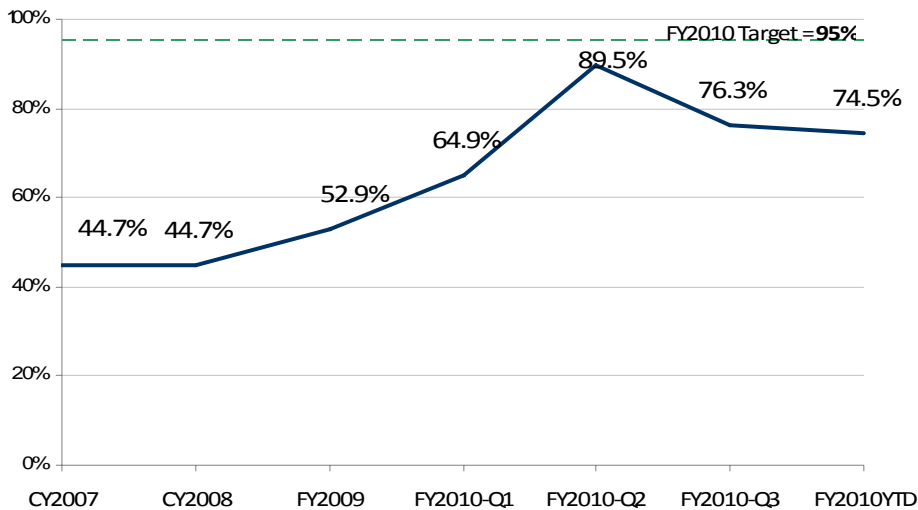
Notes:

- Data on Braam measure being provided on a quarterly basis
- See p. 11-13, Appendix II for detailed report

Measure: Children identified as physically assaultive or physically aggressive (PAAY) pursuant to the statutory definition will be placed with caregivers who have received specialized training and have a plan developed to address safety and supervision issues.

Data source: Foster Parent/ Caregiver Survey (administered by WSU)

Statewide Performance, PAAY



Goal 1, Outcome 6

Children will receive a private and individual face-to-face health and safety visit from an assigned caseworker at least once every calendar month, with no visit being more than 40 days after the previous visit.

Most Recent Annual Performance Data

Next Steps in Monitoring Compliance

FY09 Benchmark: 95%
FY09 Performance: 14.8%

Failed to reach FY09 benchmark

Compliance plan approved in May 2010

- Data for FY10 will be published in March 2011 Monitoring Report
- FY10 Benchmark is 95%
- FY10 performance would need to increase 80.2 percentage points from FY09 to meet FY10 benchmark

Monthly Data (Alternative Measure)

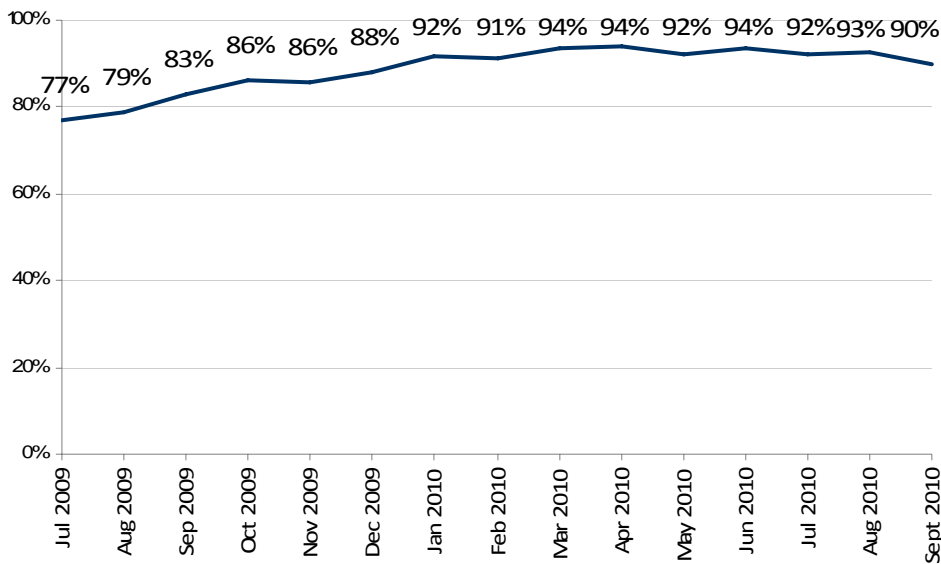
Notes:

- Data on alternative measure being provided on a monthly basis. *Measure is stated below, and is not directly comparable to the Braam measure.*
- See p. 6-8, Appendix I for detailed report and information by region

Measure: Percentage of children receiving a health and safety visit from their assigned caseworker during the month

Data source: FamLink

Statewide Performance, Monthly Visits



Goal 2, Outcome 2

All referrals alleging child abuse and neglect of children in out-of-home care will receive thorough investigation by the Division of Licensing Resources (DLR) pursuant to CA policy and timeline and with required documentation.

Most Recent Annual Performance Data	Next Steps in Monitoring Compliance
<p>FY09 Benchmark: 100% FY09 Performance: 82.9%</p> <p>Failed to reach FY09 benchmark</p> <p>Compliance plan approved in May 2010</p>	<ul style="list-style-type: none"> ▪ Data for FY10 will be published in March 2011 Monitoring Report ▪ FY10 Benchmark is 100% ▪ FY10 performance would need to increase 17.1 percentage points from FY09 to meet FY10 benchmark

Quarterly Data (Alternative Measure)

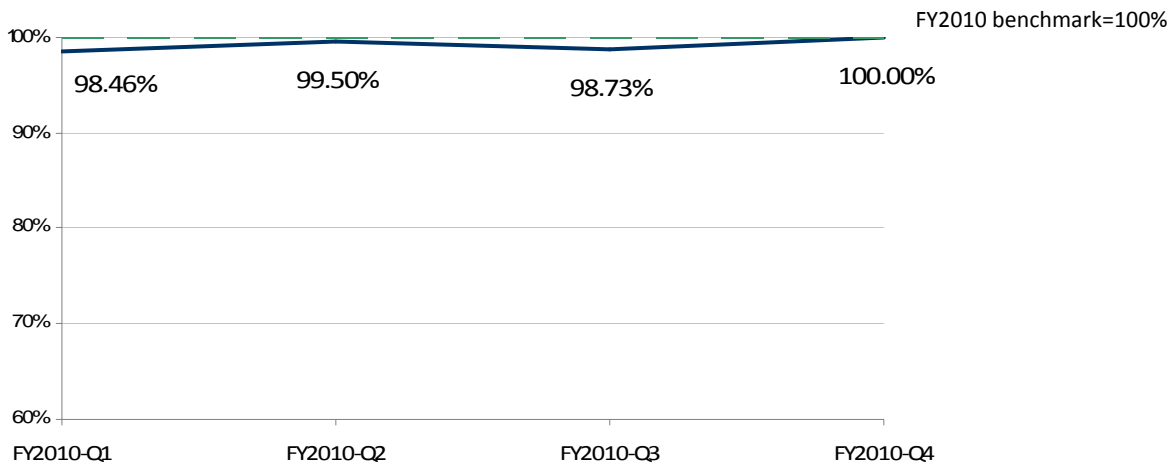
Notes:

- Quarterly data on alternative measures was provided beginning in July 2010. *Measure is stated below, and is not directly comparable to the Braam measure.*
- See p. 2-4, Appendix II for detailed report and information by region

Measure: Percentage of DLR CPS Investigations assigned during the quarter that are completed within 90 days unless the investigation is being conducted under a written protocol pursuant to 26.44.180 and a law enforcement agency or prosecuting attorney has determined that a longer investigation period is necessary.

Data source: DLR Database

Statewide Performance, Timeliness of Investigations



SIBLING SEPARATION- MONTHLY/ QUARTERLY INFORMATIONAL DATA

Findings on Outcomes and Benchmarks

Goal 1, Outcome 1

Children in out-of-home care will be placed with all siblings who are also in out-of-home care whenever possible.

Most Recent Annual Performance Data

FY09 Benchmark: 70%
FY09 Performance: 60.9%

Failed to reach FY09 benchmark

Compliance plan approved August 2010

Next Steps in Monitoring Compliance

- Data for FY10 will be published in March 2011 Monitoring Report
- FY10 Benchmark is 75%
- FY10 performance would need to increase 14.1 percentage points from FY09 to meet FY10 benchmark

Quarterly Data

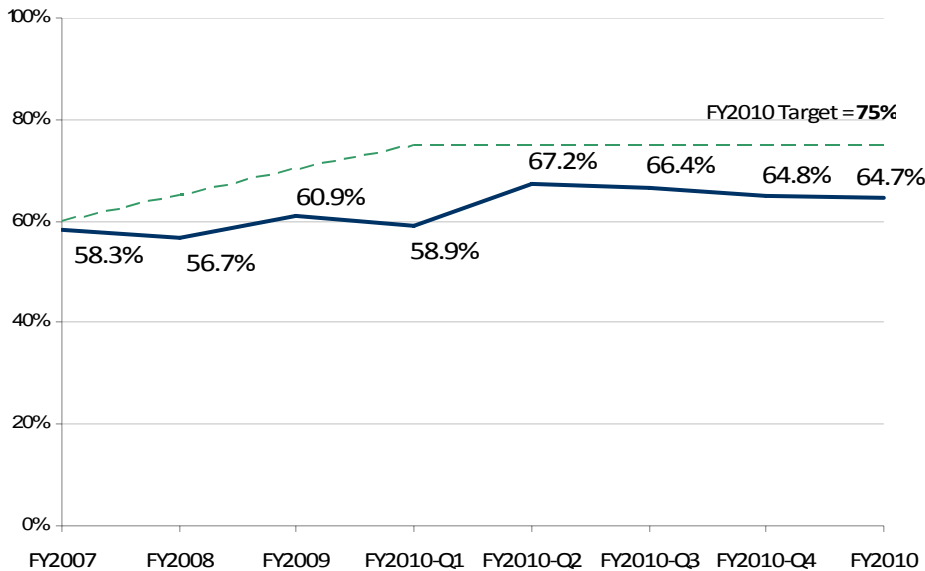
Notes:

- Data on Braam measure being provided on a quarterly basis beginning in October 2010
- See p. 20-22, Appendix II for detailed report and information by region

Measure: Percentage of siblings removed together during the FY and in care for at least 30 days who were placed with all other removed siblings.

Data source: FamLink

Statewide Performance, Children Placed with All Siblings



Goal 1, Outcome 2

Children in out-of-home care will be placed with at least one sibling who is also in out-of-home care whenever possible.

Most Recent Annual Performance Data

FY09 Benchmark: 90%
FY09 Performance: 80.9%

Failed to reach FY09 benchmark

Compliance plan approved August 2010

Next Steps in Monitoring Compliance

- Data for FY10 will be published in March 2011 Monitoring Report
- FY10 Benchmark is 90%
- FY10 performance would need to increase 9.1 percentage points from FY09 to meet FY10 benchmark

Quarterly Data

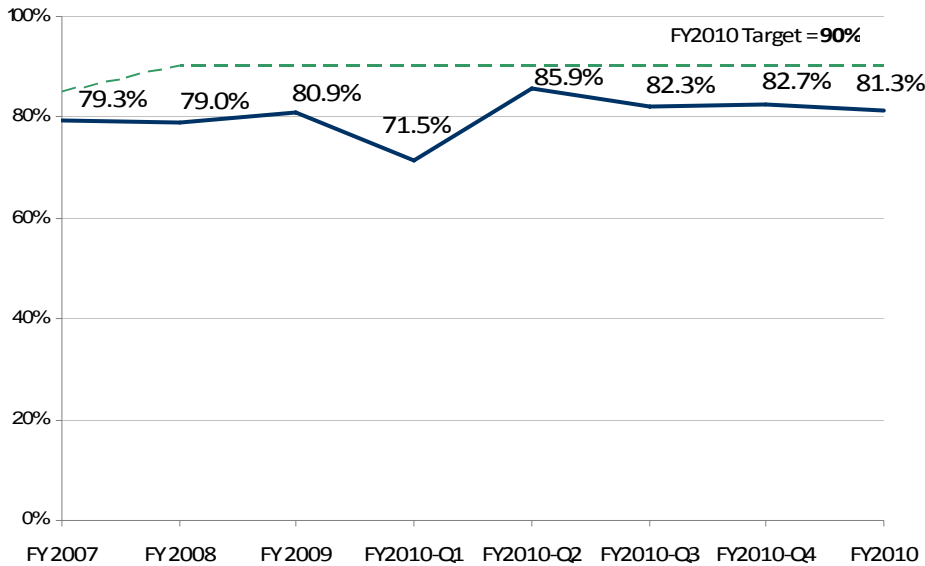
Notes:

- Data on Braam measure being provided on a quarterly basis beginning in October 2010
- See p. 23-25, Appendix II for detailed report and information by region

Measure: Percentage of siblings removed together during the FY and in care for at least 30 days who were placed with at least one other removed sibling.

Data source: FamLink

Statewide Performance, Children Placed with Some or All Siblings



Goal 2, Outcome 1

Children placed apart from their siblings will have two or more monthly visits or contacts (not including staffing meetings or court events) with some or all of their siblings.

- If the CA or the court determines that visitation/contact poses a risk to either child’s health, safety or welfare, this finding will be approved by the supervisor and documented in the child’s file.

Most Recent Annual Performance Data	Next Steps in Monitoring Compliance
<p>FY09 Benchmark: 80% FY09 Performance: 52.8%⁷</p> <p>Failed to reach FY09 benchmark</p> <p>Compliance plan approved in March 2010</p>	<ul style="list-style-type: none"> ▪ Data for FY10 will be published in March 2011 Monitoring Report ▪ FY10 Benchmark is 90% ▪ FY10 performance would need to increase 37.2 percentage points from FY09 to meet FY10 benchmark

Quarterly Data

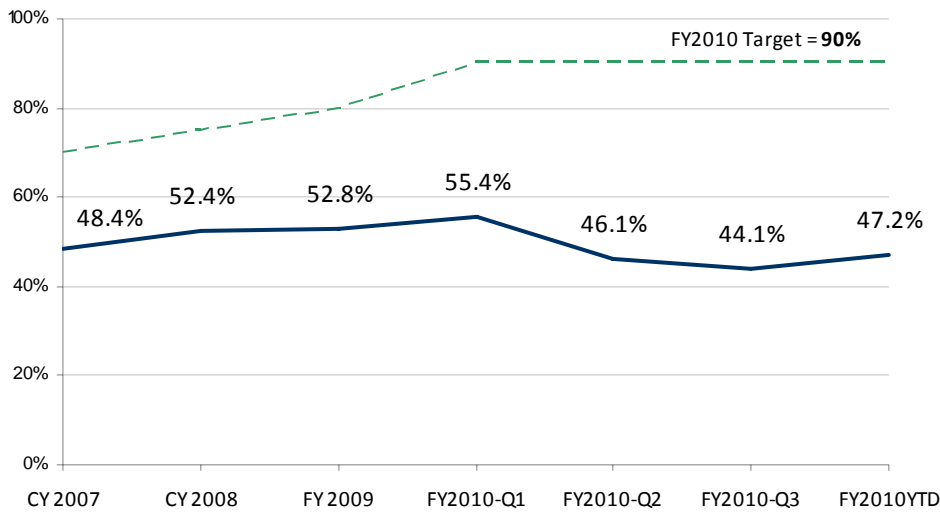
Notes:

- Data on Braam measure being provided on a quarterly basis
- See p. 17-19, Appendix II for detailed report and information by region

Measure: Children placed apart from their siblings will have two or more monthly visits or contacts (not including staffing meetings or court events), with some or all of their siblings.

Data source: Foster Parent/ Caregiver Survey (administered by WSU)

Statewide Performance, Sibling Visits and Contacts



⁷ Note: The methodology for calculating data for this outcome changed beginning with the data shown as 2008 above.

SERVICES TO ADOLESCENTS- MONTHLY/ QUARTERLY INFORMATIONAL DATA

Goal 2, Outcome 3

A multi-disciplinary staffing meeting will be held six months prior to a youth's exit from foster care to address issues related to transition to independence.

Most Recent Annual Performance Data

FY09 Benchmark: 85%
FY09 Performance: Acceptable data not available

Failed to reach FY09 benchmark

Compliance plan approved in May 2010

Next Steps in Monitoring Compliance

- Data for FY10 will be published in March 2011 Monitoring Report
- FY10 Benchmark is 95%

Monthly Data

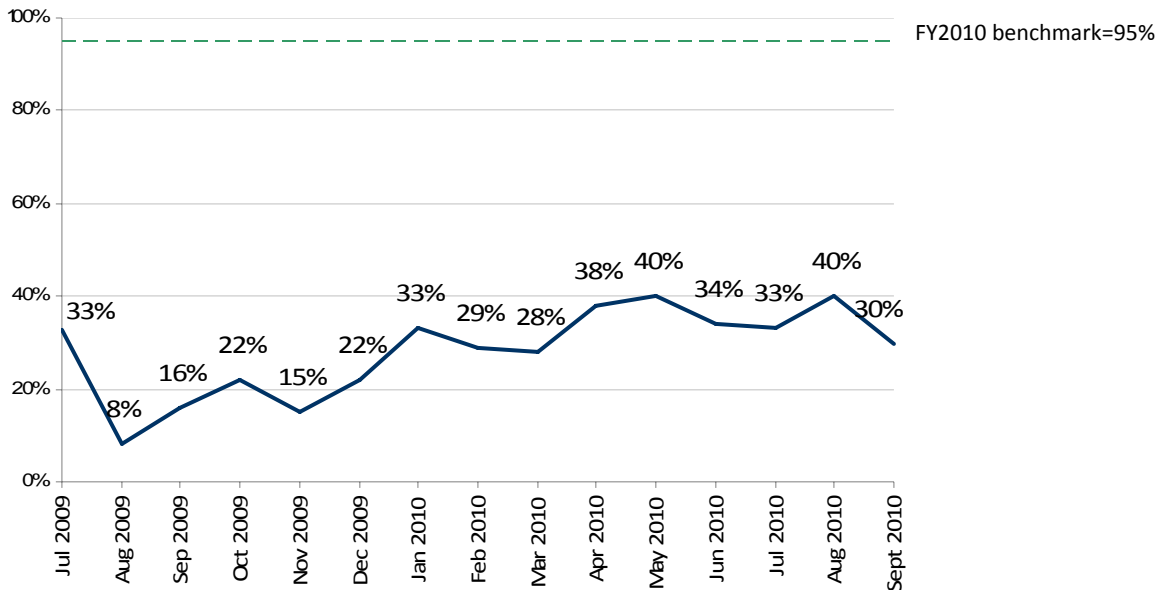
Notes:

- Data on Braam measure being provided on a monthly basis
- See p. 33-35, Appendix I for detailed report and information by region

Measure: A multi-disciplinary staffing meeting will be held six months prior to a youth's exit from foster care to address issues related to transition to independence.

Data source: FamLink

Statewide Performance, Exit Staffings



Goal 3, Outcome 1

The percentage of children who run from out-of-home care placements during the fiscal year will decrease.

Most Recent Annual Performance Data

FY09 Benchmark: 2.5%
FY09 Performance: 3.4%

Failed to reach FY09 benchmark

Compliance plan approved in May 2010

Next Steps in Monitoring Compliance

- Data for FY10 will be published in March 2011 Monitoring Report
- FY10 Benchmark is 2.0%
- FY10 performance would need to improve by 1.4 percentage points from FY09 to meet FY10 benchmark

Quarterly Data (Alternative Measure)

Notes:

- Data on alternative measure is being provided on a monthly basis. *This measure is stated below, and is not directly comparable to the Braam measure.* Quarterly data on the Braam measure will be provided beginning in January 2011.
- See p. 36-40, Appendix I for detailed report and information by region

Measure: Count of youth under CA Placement and Care Authority that are identified as missing from care on the last day of the month.

Data source: FamLink

Statewide Performance, Runaways

