

BRAAM SETTLEMENT MONITORING REPORT #7

OCTOBER 8, 2009

Covers the performance period ending June 30, 2009





Braam Oversight Panel

The Braam Oversight Panel was created in 2004 to oversee a Settlement regarding Washington State's foster care system. The Settlement was reached after a six-year period of litigation. The named Plaintiff, Jessica Braam, is an adult who lived in 34 foster homes by the time the suit was filed in 1998. The Settlement is intended to improve the conditions and treatment of children in the custody of the state's Division of Children and Family Services. *As of January 2009, there were 11,647 children in DCFS custody, including children in out-of-home care and dependent children who were being served in their own home.*

The Panel was created to monitor improvements in selected services and ensure quality standards are met during the seven year duration of the settlement. This independent Panel was mutually selected by the parties (the Plaintiffs who filed the lawsuit and the state of Washington). The Panel, working in collaboration with the Department of Social and Health Services (DSHS) and with substantial input from the Plaintiffs and other stakeholders, issued an Implementation Plan for the six areas specified in the Settlement in February 2006. In July 2008, a Revised Braam Implementation Plan was published to reflect clarifications and modifications based on developments in the Braam process and discussions with DSHS, the plaintiffs and stakeholders.

This document is the seventh monitoring report on the Settlement and provides **outcome data for calendar year 2008**, as well as a report on **action steps through June 30, 2009**. This monitoring report is based on the requirements of the Revised Braam Implementation Plan (July 3, 2008).

Members

John Landsverk, Chair

Jeanine Long

Jan McCarthy

Jess McDonald

Dorothy Roberts

Carrie Whitaker, Executive Coordinator

Box 354900
4101 15th Ave NE
Seattle, WA 98105-6299

Phone: (206) 616-0390
FAX: (206) 543-1228
E-mail: carwhit@u.washington.edu
Website: www.braampanel.org

TABLE OF CONTENTS

Overview	2
Approach to Monitoring Reports	5
Part I: Monitoring Report on Action Steps	8
Placement Stability	10
Mental Health	11
Foster Parent Training and Information	13
Unsafe/Inappropriate Placements	14
Sibling Separation	15
Services to Adolescents	16
Part II: Monitoring Report on Outcomes	19
Placement Stability	22
Mental Health	23
Foster Parent Training and Information	27
Unsafe/Inappropriate Placements	30
Sibling Separation	34
Services to Adolescents	36
Part III: Informational Reports	39
Status of Informational Reports	40
Informational Reports	44
Appendices (<i>separate attachments</i>)	
o Appendix I: Braam Outcomes Report- 2009 Survey of Foster Parents and Caregivers in Washington State	

[Page left blank intentionally.]

OVERVIEW

The Braam Oversight Panel was created in December 2004 to oversee a settlement agreement (Settlement) regarding Washington State's foster care system. The Settlement was reached after a six-year period of litigation.¹ The parties to the Settlement include the Plaintiffs,² who filed the lawsuit, and the State of Washington, respondents to the lawsuit.

The final Settlement created an independent oversight panel (the "Panel") that was mutually selected by the parties. The members include:

- A former child welfare administrator;
- A child welfare researcher;
- An expert in children's mental health; and
- Two additional members.

The Settlement directed the Panel to establish professional standards, outcomes, benchmarks, and action steps to improve the treatment of, and conditions for, children in the custody of DCFS, and to monitor the Department's performance under this Settlement (Settlement, page 1). The intent of the Settlement, and the Panel's work, is summarized on the first page of the Settlement:

"The parties enter into this Agreement with the recognition that both parties and their counsel have committed to enter into specific, measurable, and enforceable agreements with the goal of improving the conditions and treatment of children in the custody of the Division of Children and Family Services."

Over 50 provisions from Kids Come First II, the comprehensive reform plan for children's services in place at the Department at the time the agreement was reached, were incorporated directly into the Settlement. The Settlement also addressed numerous issues included in state law.

Settlement Definitions

The Settlement defines the Plaintiff class as follows:

- **"Child" or "Children" in foster care** means children in the custody of DCFS. For the outcomes, benchmarks, and actions steps, this term refers to children in the Plaintiff Class, defined as all children in the custody of DCFS who are now or in the future will be placed by DCFS in three or more placements and those children in the custody of DCFS who are at risk of three or more placements. The Panel interprets this definition to include all children in the custody of DCFS.

As of July 2008, there were 11,647 children in DCFS custody, including children in out-of-home care and dependent children who were being served in their own homes.

- **"Department"** means the Department of Social and Health Services. In terms of responsibilities related to the Settlement, the most relevant divisions are the Children's Administration and Health and Recovery Services (including the Division of Mental Health and the Division of Alcohol and Substance Abuse).

¹ The Final Settlement is available on the Braam Panel website: www.braampanel.org.

² The Plaintiffs' attorneys include Columbia Legal Services, the National Center for Youth Law, and Tim Farris, a Bellingham lawyer who initiated the case.

The Settlement established goals in six areas:

- **Placement Stability:** Every child will have a safe and stable placement with a caregiver capable of meeting the child's needs.
- **Mental Health:** Children shall have initial physical and mental health screenings within 30 days of entry into care. The child's case plan will include plans to meet their special needs. Children shall receive timely, accessible, individualized, and appropriate mental health assessments and treatment by qualified mental health providers. Continuity of treatment providers will be maintained.
- **Foster Parent Training and Information:** Caregivers shall be adequately trained, supported, and informed about children in their care. The Department shall provide accessible pre-service and in-service training to all caregivers sufficient to meet the caregiving needs of children in placement.
- **Unsafe/Inappropriate Placements:** All children shall be placed in safe placements. The state shall continue to meet or exceed the federal standard for out-of-home care.
- **Sibling Separation:** Placement of siblings together is presumed to be in the children's best interest unless there is a reasonable basis to conclude that the health, safety, or welfare of a child is put in jeopardy by the placement. Frequent and meaningful contact between siblings in foster care who are not placed together and those who remain at home should occur unless not in child's best interest.
- **Services to Adolescents:** Improve the quality and accessibility of services to adolescents. Improve the educational achievements of these adolescents and better prepare them to live independently. Reduce the number of adolescents on runaway status from foster care.

Collaboration and Consultation

The Settlement directs the Panel to conduct its work "in collaboration with the Department, and with substantial input from Plaintiffs, and other stakeholders as necessary" (Settlement, page 3). The Settlement also provides that "in carrying out all of its general and specific duties, the Panel shall make independent decisions based on professional judgment and guided by knowledge of effective practice and an understanding of the public child welfare system in the State of Washington" (Settlement, page 3). In the Panel's view, the statements regarding "in collaboration with...and with substantial input from" and "independent decisions" establish a creative tension to its work. The Panel submits its reports for review and comment by the parties and other stakeholders, while reserving its independent and final decision-making for the structure, content, and wording of its reports.

The original Settlement specifies that the Panel "will comply with the Open Public Meetings Act, the Public Disclosure Act and all applicable confidentiality statutes and regulations" (Settlement, page 5). In February 2008, attorneys representing the Department and the plaintiffs formally amended the Settlement Agreement to facilitate the Panel's efforts to carry out its duties between public meetings. Based on this amendment, the Panel may hold non-public work sessions or phone meetings with advance notification of the parties and maintenance of meeting minutes. The Panel continues to meet publicly at least four times per year.³

In carrying out its duties, the Panel welcomes comments from stakeholders and tribal representatives. While the Department is ultimately responsible for achieving the Settlement requirements, community providers play a significant role in service delivery for children and families and have an important voice

³ Minutes of non-public Panel meetings and work sessions are available by request to the parties and the public. Information on public Panel meetings, including meeting schedules, agendas and minutes, are available on the Braam Panel website: www.braampanel.org.

and perspective to offer both the Department and the Panel. Collaboration with parents, relatives, and tribal representatives will help ensure quality decision-making for children; numerous provisions in both KCF II and the Settlement outcomes and action steps reinforce this value.

Panel Work Products

Under the Settlement, the Panel issues the following types of documents:⁴

- **Implementation Plan**, defining the specific and enforceable performances required by the Settlement. In February 2006, the Panel published the Braam Settlement Implementation Plan. This document was developed through extensive public meetings and collaboration with DSHS and input from plaintiffs' counsel, and incorporated many recommendations and responses to previous draft documents from both parties and stakeholders.

The Revised Implementation Plan (July 3, 2008) includes clarifications and modifications based on developments in the Braam process and discussions with DSHS, the plaintiffs and stakeholders during 2006 and 2007.

- **Monitoring Reports**, measuring progress toward the Settlement goals, outcomes, benchmarks, and action steps for each six-month period. Under the agreement, the Panel is expected to "monitor the Department's progress with the specific Outcomes, Benchmarks, and Action Steps identified in this Agreement or as part of its implementation." (Settlement, page 4).

The Panel began publishing progress reports in March 2006. Subsequent reports were released in September 2006, April 2007, October 2007, October 2008 and March 2009. Pursuant to the Settlement Agreement, the Panel will continue to publish monitoring reports every six months through the duration of the agreement.

- **Decisions on Compliance Plans**, in which the Panel issues decisions on plans proposed by the Department to achieve compliance in areas in which the Panel has determined that adequate progress has not been made.
- **Professional Standards**, which "the parties agree will be the Professional Standards used in any enforcement proceeding" (Settlement, page 4). After significant input from the Department and the plaintiffs, the Panel published professional standards in March 2007.

⁴ All Panel work products are available on the Braam Panel website at www.braampanel.org. Individuals and organizations can sign up to receive email alerts when new material is posted.

APPROACH TO MONITORING REPORTS

The Settlement requires the Panel to “monitor compliance and make findings with respect to the outcomes, benchmarks and action steps;” and to “issue semi-annual public reports on the Department’s compliance with the provisions of this Agreement.”

This Monitoring Report is based on the requirements set forth in the **Revised Braam Implementation Plan**, which was published on July 3, 2008. The Revised Implementation Plan replaces the February 2006 Implementation Plan and provides a revised framework for monitoring efforts. The Revised Implementation Plan was developed during the first half of 2008 by the Panel in collaboration with DSHS and with substantial input from the plaintiffs to reflect changes and clarifications since the publication of the original plan. The Revised Braam Implementation Plan included changes in the definition of many Braam outcomes, the annual benchmarks to be used to assess compliance with these outcomes, and the action steps that will be subject to ongoing monitoring by the Panel. These changes are reflected in this Monitoring Report.

This document is the Panel’s seventh monitoring report and provides **outcome data for calendar year 2008** and assesses performance on **action steps for the period ending June 30, 2009**.

This Monitoring Report includes three major sections:

- **Monitoring report on action steps**- This report summarizes progress with respect to action steps through June 30, 2009. Only action steps that are subject to continued monitoring under the Revised Braam Implementation Plan are included in this report.⁵

Part I of this document, beginning on page 8, is the Panel’s assessment of progress on these action steps. The primary sources for this portion of the report are documents from the Department, including an update report summarizing progress and other written material (policies, plans, etc.). The Panel used the “comments” section of the matrix to provide further information on progress to date.

- **Monitoring report on outcomes**- The Panel’s Revised Implementation Plan specified outcomes to “identify specific, required results that will advance the child welfare system toward a stated goal” (Settlement, page 4) and established annual benchmarks through which the Panel will monitor compliance with these outcomes.

This Monitoring Report assesses progress with respect to the outcomes and benchmarks set forth in the Revised Braam Implementation Plan.⁶ In this Monitoring Report, progress toward the benchmarks was determined by using foster parent survey data for calendar year 2008.

Part II of this document, beginning on page 19, presents information on outcomes and benchmarks. For each goal area of the agreement, information for each outcome identified in the Revised Braam Implementation Plan is provided in two sections:

⁵ The Revised Braam Implementation Plan includes a section detailing the status of all action steps included in the Braam Settlement Agreement and the original February 2006 Braam Implementation Plan (see p.40 of Revised Braam Implementation Plan at <http://www.braampanel.org/ImpPlanREVJuly08.pdf>). Many of these action steps have been found to be complete by the Panel or will not be subject to ongoing monitoring because they are addressed through related outcomes or informational reports. Only the action steps classified as “retained” in the Revised Braam Implementation Plan will be included in this and future Braam Monitoring Reports.

⁶ The Revised Braam Implementation Plan included a number of changes from the February 2006 Implementation Plan with respect to how outcomes are defined and in the annual benchmarks to be achieved. This and future Braam Monitoring Reports will be based on the Revised Braam Implementation Plan.

- Findings on Outcomes and Benchmarks: For 11 outcomes, findings with respect to whether or not annual benchmarks for 2008 were reached are presented. For eight of these outcomes, data are based on a survey of foster parents. For an additional three outcomes, data were due in January or August 2009 for FY08 or CY08 and have not yet been provided.
 - Compliance not reviewed in this report: For 22 outcomes, outcome data are due at the start of 2010 for the Panel's next Monitoring Report. For these outcomes, data come from the Department's administrative databases and/or from a case review process. Details for each outcome are explained in Part II of this document.
- **Informational reports**- Part III of this document, beginning on page 39, is devoted to informational reports required under the Revised Implementation Plan.

As stated in the Revised Implementation Plan, "in areas identified for informational reports, the Panel will require annual submission of data by the Department (including performance by region and by racial/ ethnic subcategories), but will not set forth or assess compliance with annual benchmarks. Informational reports will provide the Panel, parties, and stakeholders with extensive data to better understand progress toward Braam goals and outcomes. Upon review of informational reports, the Panel reserves the right to reinstate or develop new outcomes and benchmarks."

This section of the report lists the informational reports required under the Revised Implementation Plan, the status of these reports, and a summary of informational reports provided to date.

Next Steps

The Revised Implementation Plan requires submission of data by race and ethnicity for all Braam outcomes. The Panel has received these reports for six outcomes, and has reiterated its request for data by race/ ethnicity for an additional eighteen outcomes. The Department has indicated that it expects to be able to provide these data in late 2009; the Panel notes that these reports were due in February and/or August 2009 and are now substantially overdue.

The Panel is also discussing possible approaches to the use of data for Braam outcomes by race and ethnicity with the Department, plaintiffs' counsel, and the Racial Disproportionality Advisory Committee.

The Panel's next Monitoring Report will be issued in April 2010. This report will cover progress on action steps through December 31, 2009 and will provide data and assess progress for fiscal year 2009 (July 2008- June 2009) on Braam outcomes that are measured through administrative data.

[Page left blank intentionally.]

PART I: MONITORING REPORT ON ACTION STEPS

This Monitoring Report is based on the expectations set forth in the **Revised** Braam Implementation Plan, which was published on July 3, 2008. With respect to action steps, the Revised Braam Implementation Plan includes a section detailing the status of all action steps included in the Braam Settlement Agreement and the original February 2006 Braam Implementation Plan (see p.40 of Revised Braam Implementation Plan at <http://www.braampanel.org/ImpPlanREVJuly08.pdf>). Many of these action steps have been found to be complete by the Panel or will not be subject to ongoing monitoring because they are addressed through related outcomes or informational reports. *Only the action steps classified as “retained” in the Revised Braam Implementation Plan will be included in this and future Braam Monitoring Reports.*

The following matrix reports on the **progress through June 30, 2009** of the 15 action steps subject to continued monitoring under the Revised Braam Implementation Plan, including action steps that are operating under compliance plans previously approved by the Panel.

Detailed Status of Action Steps

The Panel has categorized the status of the 15 action steps as follows (the numbers in parentheses indicate the number of action steps that fit each category—e.g. 6 action steps are complete):

- ✓ Complete (6)
- ✓ Complete through performance period⁷ (4)
- ✓ Incomplete: Compliance Plan for this step will be due in 30 days⁸ (3)
- ✓ Under a Previously-Approved Compliance Plan
 - Actions under the compliance plan were not complete through performance period (1)
- ✓ Pending (1)

⁷ Action steps with some items due before and others after June 30, 2009 were assessed as “complete through performance period.”

⁸ This category includes action steps found to be incomplete in this Monitoring Report. Pursuant to the Settlement, the Department has 30 days to submit proposed plans to achieve compliance with these steps. Action steps are categorized as incomplete whenever any substeps that were due have been determined not to have been implemented, even if some portions of the action step have been completed. The comments section in the matrix detailing the Panel’s decisions on action steps indicates which portions of the step have been completed.

Summary of the Panel's findings on the Action Steps by area of the settlement agreement

	Placement Stability	Mental Health	Foster Parent Training	Unsafe/ Inappropriate Placements	Sibling Separation	Adolescents	<i>total</i>
Complete				2	1	3	6
Complete through performance period		2	1			1	4
Incomplete: Compliance Plan for this step will be due in 30 days		1				2	3
Under a previously-approved compliance plan—actions under the compliance plan were not complete through the performance period	1						1
Pending						1	1
<i>Total</i>	1	3	1	2	1	7	15

Format of the Report on Action Steps

Numbering System

Kids Come First II, the Braam Settlement Agreement, and the February 2006 Braam Implementation Plan used slightly different numbering systems to refer to Braam action steps. In the Revised Braam Implementation Plan, retained action steps were renumbered in sequential order. This and future Panel reports will identify action steps based on the numbering in the Revised Braam Implementation Plan.

Matrix

The Panel's assessment of progress on action steps is presented in a 3-column matrix format beginning on page 10. The first column (Area/ Action Step) lists the action step. In the center column (Implementation Status), the status of the action step is noted, along with a parenthetical reference to the report in which the Panel made this finding. The last column of the matrix (Comments) provides clarifying comments from the Panel and expectations for future updates.

For the 6 action steps that are complete, all three columns are shaded.

Area/Action Step	Implementation Status	Comments
Placement Stability		
<p>Develop a plan by June 30, 2005 for review and approval by the Braam Panel to reduce caseloads to COA standards <i>[Revised Implementation Plan Placement Stability Action Step 1]</i> <i>[KCF II 14.1.8 (incorporated from Braam into KCF II) , Action Step 1(c)(9) in Settlement]</i></p> <ul style="list-style-type: none"> a. Establish workgroup to develop plan and estimate costs/resources required (1/05) b. CA Management reviews and approves plan (5/05) c. Plan submitted to Braam Panel for review (6/05) 	<p>Under a previously-approved compliance plan-actions under the compliance plan were not complete through this performance period (Monitoring Report #7, October 8, 2009)</p>	<p>Compliance plan approved on October 1, 2008. Under this compliance plan, CA is expected to submit monthly updates on caseload size data. These data have not been submitted by CA since January 2009.</p> <p>Plan to reduce caseloads was approved in July 2009.</p>

Area/Action Step	Implementation Status	Comments
Mental Health		
<p>Initial (72 hour) health screening <i>[Revised Implementation Plan Mental Health Action Step 1]</i> <i>[Goal 1, Outcome 1, Action step 2-4 of February 2006 Braam Implementation Plan]</i></p> <ul style="list-style-type: none"> • The plan for achieving Goal 1, Outcome 1 will be submitted to the Panel for review and approval-- 3/30/07 • The Department will begin to implement initial health screens-- 10/30/07 • The Department will track implementation to ensure that each child who enters out-of-home care receives an initial health screen-- Begin 10/07—continuous tracking 	<p>Incomplete (Monitoring Report #7, October 8, 2009)</p> <p>Compliance plan required</p>	<p>Action step was found incomplete in Monitoring Report #5 (October 2008). Compliance plan was required, but not submitted.</p> <p>Action step was found incomplete in Monitoring Report #6 (March 2009). Compliance plan was required, but not submitted.</p>
<p>Develop a plan to ensure the quality of the CHET process <i>[Revised Implementation Plan Mental Health Action Step 2]</i> <i>[Goal 1, Outcome 2, Action Step 1 of February 2006 Braam Implementation Plan]</i></p> <p>The Department will develop, and submit to the Panel for approval, a plan to review and ensure the quality of the CHET process that will address issues such as:</p> <ul style="list-style-type: none"> • timeliness of completing CHET screens • timely receipt of educational records • well-child EPSDT exams completed within 30 days • quality of information collected in each of the 5 domains • effectiveness of the screening and assessment instruments used in CHET • use of data/information on a child that is received after the Shared Planning Meeting occurs • inclusion of parents, caregivers, youth (age 12 and over), tribal representatives (when applicable), and children’s representatives in the CHET Shared Planning Meetings, and in developing Action Plans • determining whether CHET recommendations are followed and services are received • for children whose CHET recommendations are largely unrelated to services received, analyze reasons and suggest system improvements <p>The plan will be completed and submitted to the Panel for review by 12/30/06</p> <p>The Department will begin implementation of the plan by 9/30/07</p> <p>The Department will provide the Panel with annual reports on the results of the Quality Review beginning 9/30/08</p>	<p>Complete through performance period (Monitoring Report #7, October 8, 2009)</p>	<p>Annual report on the results of the Quality Review due on September 30, 2009.</p>

Area/Action Step	Implementation Status	Comments
Mental Health		
<p>Annual review of mental health and substance abuse services <i>[Revised Implementation Plan Mental Health Action Step 3]</i> <i>[Goal 3, Additional Action Step 7 of February 2006 Braam Implementation Plan]</i></p> <p>The Department will complete an annual review of the status of mental health and substance abuse services for children in foster care and use the findings from the review to address service gaps and system problems to develop services and to expand the use of evidence-based models of service, where applicable.</p> <p>The Department will publish the review and plan annually, beginning in November 2007. The annual review will identify by region both achievements in foster children receiving services and any deficiencies. The Department will establish plans to increase the achievements and reduce the deficiencies. The review and plans will be based in part on service data; direct feedback from children, parents, and caretakers; and reports generated through the action steps in the Settlement and the Braam Implementation Plan.</p>	<p>Complete through performance period (Monitoring Report #7, October 8, 2009)</p>	<p>Annual mental health and substance abuse services review due in November 2009.</p> <p>As noted in the Panel’s March 2009 Monitoring Report, this review should address the following issues:</p> <ul style="list-style-type: none"> • Describe what has been learned since the launch of FamLink about children’s mental health and substance abuse needs and services. • Provide an update on evidence-based practices available through Children’s Administration, Mental Health Division, and Juvenile Rehabilitation Administration, including the number of children needing and having access to these services. • Provide an update on the implementation of SHB 1088 and its implications for children in foster care. Provide additional detail on the survey of 2,000 stakeholders conducted as part of this process in June 2008 (Did this survey address the mental health needs of children in foster care? What were the results of this survey?) • Document the outcomes of the meetings between CA regional staff and RSN children’s care coordinators in terms of solving problems and coordinating services for children in foster care. • Clarify how service planning is coordinated for children who receive services across multiple divisions.

Area/Action Step	Implementation Status	Comments
Foster Parent Training and Information		
<p>Foster parent survey <i>[Revised Implementation Plan Foster Parent Training Action Step 1]</i> <i>[Action Step 1 of February 2006 Braam Implementation Plan]</i></p> <p>The Children’s Administration will contract with the Social and Economic Sciences Research Center (SESRC) at Washington State University to develop and conduct an independent, statistically valid, anonymous survey of foster parents (current and former) and relative caregivers (licensed and unlicensed) that is conducted annually concerning all areas of the Settlement related to caregiver’s work with foster children and associated outcomes and action steps.</p> <p>In developing the survey design, tool, and procedures, the SESRC shall consult with the Panel, the Washington State Foster Parent’s Association, Braam plaintiffs’ attorneys, the CA Youth Advisory Group, the foster parent liaison staff in CA, and a group of five DCFS staff selected by CA.</p> <p>Survey planning completed by 10/1/06</p> <p>Survey reviewed and approved by Panel by 12/1/06</p> <p>First survey results to Panel by 9/01/07</p> <p>Second survey results to Panel by 8/01/08</p> <p>Third survey results to Panel by 8/01/09</p> <p>Fourth survey results to Panel by 8/01/10</p> <p>Fifth survey results to Panel by 6/01/11</p>	<p>Complete through performance period</p> <p>(Monitoring Report #7, October 8, 2009)</p>	<p>Third annual survey results were provided in September 2009.</p>

Area/Action Step	Implementation Status	Comments
Unsafe/Inappropriate Placements		
<p>Increase contact between social worker and family, child and caregivers to at least every calendar month, with no visit being more than 40 days after the previous visit⁹ <i>[Revised Implementation Plan Unsafe Placements Action Step 1]</i> <i>[KCF II 14.1.2 (originally 11.1.2), Action Step 4(c)(1) in Settlement]</i></p> <p>For children placed in out-of-home care, develop and implement a policy to require visits every calendar month, with no visit being more than 40 days after the previous visit) between social worker and parents, and social worker and child IN ALL CASES</p> <p>This action step and following benchmarks are subject to 2005 budget request</p> <ol style="list-style-type: none"> Utilizing policy workgroup from 14.1.1, develop policy recommendations (3/05-5/05) Workgroup reports out recommendations (5/05) CA Management reviews and approves policy recommendations (6/05) Budget decisions (7/05) Provide orientation to staff, caregivers and community partners on new policy requirement (7/05-9/05) Revise new social worker academy training to support new policy and practice guidelines (9/05) Based on available funding, implement policy changes (10/05) Establish baseline for compliance with policy changes and set performance measure (3/06) Initiate quarterly reporting to the field (6/06) 	<p>Complete (Monitoring Report #6, March 16, 2009)</p>	<p>Implementation of policy requiring monthly visits and visits in the first week of placement occurred on September 1, 2008.</p> <p>Action step requirement for quarterly reporting is replaced by monthly provision of data under compliance plan for Unsafe & Inappropriate Placements Goal 1, Outcome 6.</p>
<p>Increase compliance with policy requiring workers to visit children in placement within the first week of out-of-home care <i>[Revised Implementation Plan Unsafe Placements Action Step 2]</i> <i>[KCF II 14.1.6, Action Step 4(c)(2) in Settlement]</i></p> <p>Review and revise policy requiring social workers to visit all children in their placement within the first week in out-of-home care</p> <ol style="list-style-type: none"> Establish workgroup to review and revise policy (6/05) Orient staff to new policy requirement (8/05) Begin implementation of new policy (10/05) Establish regional baselines and set performance measure (6/06) Initiate quarterly reporting to the field (6/06) 	<p>Complete (Monitoring Report #6, March 16, 2009)</p>	<p>Implementation of policy requiring monthly visits and visits in the first week of placement occurred on September 1, 2008.</p> <p>In lieu of quarterly reporting required under action step, Panel requests informational reports on visits in the first week of out-of-home placement, to be submitted along with monthly data being provided under compliance plan for Unsafe & Inappropriate Placements Goal 1, Outcome 6.</p>

⁹ Language of original action step has been modified from visits “once every 30 days” to “every calendar month, with no visit being more than 40 days after the previous visit” to reflect policy changes approved by the Panel. In addition, after discussion with the parties, the Panel interprets references to “parents,” “family” and “caregivers” in the original action step language to apply to the individual(s) with whom a child in the Braam class is living: a foster parent, a relative caregiver, or a birth parent for a child placed in an in-home dependency.

Area/Action Step	Implementation Status	Comments
Sibling Separation		
<p>Develop and implement policies and protocols to increase the quality and frequency of visits or contacts between children, parents, and siblings <i>[Revised Implementation Plan Sibling Separation Action Step 1]</i> <i>[KCF II 18.1.1, Action Step 5(c)(1) and Action Step 5(c)(5) in Settlement]</i></p> <p>Develop policies and protocols regarding visitations for children in foster care to include frequency of visitation</p> <ol style="list-style-type: none"> a. Establish a policy workgroup, including stakeholders and researchers, to develop a framework for visitations between parents and children and siblings that is utilized uniformly across regions. Framework to include guidelines for visitations which encompass: (9/04-12/04) <ul style="list-style-type: none"> • When visitations can be unsupervised, • When visitations can be outside of the DCFS office, • When visitations can be outside DCFS office hours, and • Who is able to supervise visits • How the visitation issues will be addressed during the Family Team Decision Making meeting which occurs within 72 hours of a child’s placement in out-of-home care. • How the visitation issues will be addressed in other staffings and supervisory conferences • Guidelines for documentation of visits for social workers and contracted service providers b. Workgroup reports out recommendations (12/04) c. CA Management reviews and approves framework and policy recommendations (1/05) d. Provide training for staff and providers to support policy changes for visitations, quality of visitations and maintaining child’s cultural connections (2/05-4/05) e. Implement policy changes upon training (2/05-4/05) f. Report out quarterly on progress (6/05-6/07) 	<p>Complete (Monitoring Report #5, October 1, 2008)</p>	<p>Requirement for quarterly reporting is replaced by monitoring of related outcome (Sibling Separation, Goal 2, Outcome 1).</p>

Area/Action Step	Implementation Status	Comments
Services to Adolescents		
<p>Educational attainment study <i>[Revised Implementation Plan Adolescent Services Action Step 1]</i> <i>[Goal 2, Outcome 3, Action step 1 of February 2006 Braam Implementation Plan]</i></p> <p>The CA will replicate the 2001 WSIPP study Educational Attainment of Foster Youth: Achievement of Graduation Outcomes for Children in State Care for school-age children in foster care three months or longer in FY2005, with inclusion of WASL performance for 4th, 7th and 10th grades and all other variables in the study. The study may be done by CA following the methods used in the 2001 study, or contracted to WSIPP or another research organization.¹⁰</p> <ul style="list-style-type: none"> • Plan to Panel regarding intent to perform work within DSHS or contract (6/1/06) • First study completed (11/1/08) • Follow-up studies (11/1/08, 12/1/10) 	<p>Pending (Monitoring Report #7, October 8, 2009)</p>	<p>Panel expects to receive reports as outlined in status update:</p> <ul style="list-style-type: none"> - Report on graduation outcomes— September 2009 - Report on WASL outcomes- December 2009 - Report on educational advocacy program- February 2010
<p>Establish educational outreach positions to assist children in out-of-home care in meeting K–12 educational objectives and preparing for higher education goals. <i>[Revised Implementation Plan Adolescent Services Action Step 2]</i> <i>[KCF II 15.3.4 (originally 15.1.3), Action Step 6(c)(7) in Settlement]</i></p> <p>Work with Washington Education Foundation to obtain funding and implement the Foster Care to College Partnership plan, which includes establishing six regional educational outreach positions, who will serve as liaisons to assist children (16-18 year olds) in out-of-home care in meeting higher education goals.</p> <ol style="list-style-type: none"> a. In collaboration with Washington Education Foundation, complete Foster Care to College Partnership proposal (10/04) b. Seek 3-year grant funding (10/04-2/05) c. Based on funding, begin implementation of the Foster Care to College Partnership plan (4/05) d. Report on implementation (9/05) e. Annual evaluation report (completed each year of the 3-year grant funding) (6/06, 6/07, 6/08) 	<p>Complete (Monitoring Report #5, October 1, 2008)</p>	

¹⁰ A requirement to replicate the study every two years has been deleted from the original action step. Through related requirements for informational reports, the Panel will expect ongoing submission of these data. Data can be obtained through replicated WSIPP study, FamLink, Office of the Superintendent of Public Instruction, or other sources.

Area/Action Step	Implementation Status	Comments
Services to Adolescents		
<p>Develop and implement tutoring and mentoring services, in conjunction with existing community resources, to improve educational outcomes for adolescents in out-of-home care. <i>[Revised Implementation Plan Adolescent Services Action Step 3]</i> <i>[KCF II 15.2.3 (originally 15.1.2), Action Step 6(c)(10) in Settlement]</i></p> <ul style="list-style-type: none"> a) Develop roles and responsibilities for educational coordinators (10/05) b) Hire regional educational coordinators to provide educational advocacy (12/05) c) Train regional educational coordinators (12/05) d) Regional coordinators work with community partners to develop regional plans, including existing community resources and tutoring/mentoring programs (9/05) e) Communicate program to staff, youth, caregivers and community partners (2/06) f) Implement regional plans (2/06) g) Initiate quarterly reporting to the field (5/06) 	<p>Complete (Monitoring Report #5, October 1, 2008)</p>	
<p>Attendance, truancies, suspensions and expulsions <i>[Revised Implementation Plan Adolescent Services Action Step 4]</i> <i>[Goal 2, Outcome 3, Action step 5 of February 2006 Braam Implementation Plan]</i></p> <p>The Department will collect information on school attendance, truancies, suspensions, and expulsions about youth in foster care in Washington, and will use this information to design and implement practice and system improvements in DCFS and to advocate for system improvements related to this goal.</p> <p>June 1, 2008</p>	<p>Incomplete (Monitoring Report #7, October 8, 2009)</p> <p>Compliance plan required</p>	<p>According to timeframes in the action step, data were required by June 2008. Data are still not available, and status update indicates that the ability to begin to collect these data will not be in place until February 2010.</p>
<p>Documentation of credit accumulation and GPA <i>[Revised Implementation Plan Adolescent Services Action Step 5]</i> <i>[Goal 2, Outcome 3, Action step 6 of February 2006 Braam Implementation Plan]</i></p> <p>DCFS will document each child's credit accumulation and Grade Point Average at each placement change and at the end of each school year in conjunction with the annual educational review in the ISSP. When placement changes disrupt credit acquisition, DCFS will work with the releasing and enrolling school districts to develop a plan for the child to complete credits.</p> <p>June 1, 2007</p>	<p>Complete (Monitoring Report #5, October 1, 2008)</p>	

Area/Action Step	Implementation Status	Comments
Services to Adolescents		
<p>ILP Contracts <i>[Revised Implementation Plan Adolescent Services Action Step 6]</i> <i>[Goal 2, Outcome 6, Action step 5 of February 2006 Braam Implementation Plan]</i></p> <p>The Department will propose strategies to the Panel to result in sufficient capacity of ILP contractors serving youth aged 15 and older so 100% of this population is served.</p> <p>CA proposes strategies: January 1, 2008</p> <p>Strategies implemented: July 1, 2009</p>	<p>Complete through performance period (Monitoring Report #7, October 8, 2009)</p>	<p>Panel notes continued growth in participation in IL programs in recent years.</p> <p>Panel requests updated data on participation in IL services (through contractors or other mechanisms) by February 2010 in advance of next monitoring report (April 2010).</p>
<p>Information on children in juvenile detention facilities <i>[Revised Implementation Plan Adolescent Services Action Step 7]</i> <i>[Goal 3, Outcome 3, Action step 3 of February 2006 Braam Implementation Plan]</i></p> <p>The Department will maintain information on children in foster care who spend time in juvenile detention facilities and will annually compile information on the number of these children, their lengths of stay in detention facilities, and the reason for the hold. The CA will use this information to design and implement practice and system improvements in DCFS and to advocate for system improvements.</p> <p>Report to Panel (June 1, 2008)</p> <p>Implement improvements (July 1, 2009)</p>	<p>Incomplete (Monitoring Report #7, October 8, 2009)</p> <p>Compliance plan required</p>	<p>According to timeframes in the action step, a report to the Panel was required by June 2008 and system improvements were to be implemented in July 2009. Required report has not yet been provided, and there is no evidence of any effort to identify internal practice or system improvements to address the rate at which children are placed in detention.</p> <p>Compliance plan should indicate that an analysis of the data match with the Administrative Office of the Courts will be provided to the Panel by November 30, 2009 for discussion at the Panel's December meeting. The analysis should address the requirements of the action step (information on the number of children with stays in detention, their lengths of stay in detention facilities, and the reason for the hold). Compliance plan should also address strategies for practice and system improvements.</p>

PART II: MONITORING REPORT ON OUTCOMES

In the Revised Implementation Plan (July 3, 2008), many of the original outcomes included in the February 2006 Implementation Plan were modified, consolidated, or converted to informational reports.¹¹ This and future Braam Monitoring Reports assess progress toward the benchmarks for the outcomes set forth in the Revised Braam Implementation Plan.

This Monitoring Report examines progress toward benchmarks for the year 2008. This report addresses eight Braam outcomes for which data were obtained from a survey of foster parents conducted independently by the Social and Economic Sciences Research Center (SESRC) at Washington State University, as well as three additional outcomes for which data for FY or CY 2008 were due in January or August 2009 and have not yet been provided.

Outcomes for which the data source is the state's administrative data are examined on a fiscal year basis, and data are due on January 1 of each year. These outcomes will be addressed in the Panel's next monitoring report, to be issued by April 2010.

Format of the Report on Outcomes

Beginning on page 22, information for each outcome identified in the Revised Braam Implementation Plan is provided. Each goal area includes two separate sections:

- Findings on Outcomes and Benchmarks: For 11 outcomes, findings with respect to the benchmarks for 2008 are presented.
 - A separate page is included for each outcome for which new findings are presented. In the first row of the table, the outcome as stated in the Revised Implementation Plan is shown. In the next row of the table, the first column (Benchmarks) shows the benchmark for 2008 from the Revised Implementation Plan. In the second column (Performance), statewide performance for 2008 is shown. The last column (Current Status and Comments) indicates the Panel's findings with respect to whether or not the annual benchmark was reached, and any additional comments. The bottom section of the table provides more detailed charts and data; whenever available, these charts include information on performance by region and over the past several years.
- Compliance not reviewed in this report (data not due at this time): For 22 outcomes, data are not due at this time, and therefore findings with respect to the benchmarks are not due in this report. These outcomes are scheduled to be addressed in future Monitoring Reports. More detailed information on these outcomes is included in tables at the end of each section.
 - In the first column of the table (Outcome), the outcome as stated in the Revised Implementation Plan is shown. The second column (Benchmarks) shows the next benchmark that will be monitored by the Panel. The third column (Current Status and Comments) explains when data will be provided and when the Panel will make findings related to the benchmark.

Detailed data reports can be found in the appendices.

Monitoring Approach and Findings

The Settlement Agreement calls on the Panel to "monitor the Department's compliance with the specific Outcomes, Benchmarks, and Action Steps identified" in the Agreement or as part of its implementation and "to publish a report to the public and to the parties every six months of the Department's progress and including specific findings on the Department's compliance with the provisions" of the Agreement (Settlement, page 4-5). In carrying out its monitoring responsibility in the area of outcomes and benchmarks, the Panel has sought to use language consistent with the compliance terminology used in

¹¹ Informational Reports are addressed in Part III of this report, beginning on page 39.

settlement agreement. As such, consistent with the agreement's terminology in section V, part 1, the Panel has reviewed outcomes and benchmarks and made determinations regarding whether the Department has *reached* or *failed to reach the annual benchmarks*.

The Revised Implementation Plan establishes numeric benchmarks for each outcome, identifying specific levels of performance to be achieved in each year. In addition, the Revised Implementation Plan identifies requirements for compliance based on regional data. In order to achieve compliance with outcomes identified in the Revised Implementation Plan, the Department must meet the statewide benchmark for the outcome. In addition, no individual region's performance may be significantly less than that statewide benchmark.¹² Specific regional requirements are detailed for each individual outcome in the Revised Implementation Plan. Thus, in this Monitoring Report, the Panel has reviewed both statewide and regional data in order to make a determination regarding whether an annual benchmark has been reached.

Based on this approach, on the following pages, each Braam outcome is classified into one of the following status categories:

- *Reached annual benchmark*- For one outcome, data have been provided that show that the CY08 benchmark (including statewide and regional rules) set forth in the Implementation Plan was reached.
- *Failed to reach annual benchmark: compliance plan required*- For 10 outcomes, the Panel has concluded that performance failed to reach the FY08 or CY08 benchmarks set forth in the Implementation Plan. For 7 of these outcomes, data were provided showing performance that fell short of the benchmark. For 3 of these outcomes, the Panel concluded that the benchmark was not reached because acceptable data were not provided. Pursuant to the settlement agreement, a compliance plan is required.¹³
- *Compliance not reviewed in this report (data not due at this time)*: For 22 outcomes, no finding with respect to the achievement of benchmarks is required in this report. Compliance is scheduled to be reviewed in a future monitoring report. In these areas, compliance data are based on administrative data or a chart review. The Department is expected to provide these data by January 1, 2010 in time for the Panel's April 2010 monitoring report.

¹² For a small number of outcomes, the regional requirement for compliance will be that no individual region's performance is significantly *more* than the statewide benchmark. This applies to outcomes for which annual benchmarks *decrease* over the course of the settlement, such as the percentage of youth who run away from their placements.

¹³ In many of these areas, a compliance plan was previously approved by the Panel. For these outcomes, the Panel requires an updated compliance plan, providing an update on progress with respect to the strategies included in the original compliance plan and adding or modifying strategies where applicable.

Summary- Status of outcomes by area of the settlement agreement

	Placement Stability	Mental Health	Foster Parent Training	Unsafe/ Inappropriate Placements	Sibling Separation	Adolescents	<i>total</i>
Reached annual benchmark		1					<i>1</i>
Failed to reach annual benchmark: compliance plan required		1	3	3	1	2	<i>10</i>
Compliance not reviewed in this report (data not due at this time)	3	9		5	2	3	<i>22</i>
<i>Total</i>	<i>3</i>	<i>11</i>	<i>3</i>	<i>8</i>	<i>3</i>	<i>5</i>	<i>33</i>

PLACEMENT STABILITY- OUTCOMES AND BENCHMARKS

Findings on Outcomes and Benchmarks

There are no outcomes in this section for which data are due at this time; therefore no findings with respect to outcomes and benchmarks are included in this report. See additional explanation below.

Compliance not reviewed in this report (data not due at this time)

Outcome	Benchmarks	Current Status and Comments
<u>Goal 1, Outcome 1</u> The average monthly ratio of licensed foster care beds to children in licensed foster care will be at least 2.0.	FY09=1.9	Compliance for FY09 will be reviewed in April 2010 Monitoring Report. FY08 benchmark was reached (FY08 benchmark= 1.8; statewide performance was 2.23).
<u>Goal 1, Outcome 2</u> The percentage of children who experience two or fewer placements during their current out-of-home episode of care will increase (<i>outcome measure based on percentage of youth entering care during the two previous fiscal years with 2 or fewer placements, with time-in-care specifications based on entry year</i>).	FY09= 89%	Compliance for FY09 will be reviewed in April 2010 Monitoring Report. FY08 benchmark was not reached (FY08 benchmark= 88%; statewide performance was 86.4%). Compliance plan was approved in June 2009.
<u>Goal 1, Outcome 3</u> Social workers will have caseloads at or below Council on Accreditation (COA) standards (18 child cases per caseworker for all other children) (<i>outcome measure based on the percentage of caseworkers with caseloads at or below COA standards</i>). ¹⁴	FY09=85%	Compliance for FY09 will be reviewed in April 2010 Monitoring Report. FY08 benchmark was not reached (FY08 benchmark= 80%; statewide performance was 49.9%). Compliance plan was approved in July 2009.

¹⁴ The Revised Implementation Plan's language for this outcome refers to a separate caseload standard and weighting formula for children with special needs. As discussed at the December 2008 Braam Panel meeting, the Panel has now eliminated this requirement.

MENTAL HEALTH- OUTCOMES AND BENCHMARKS

Findings on Outcomes and Benchmarks

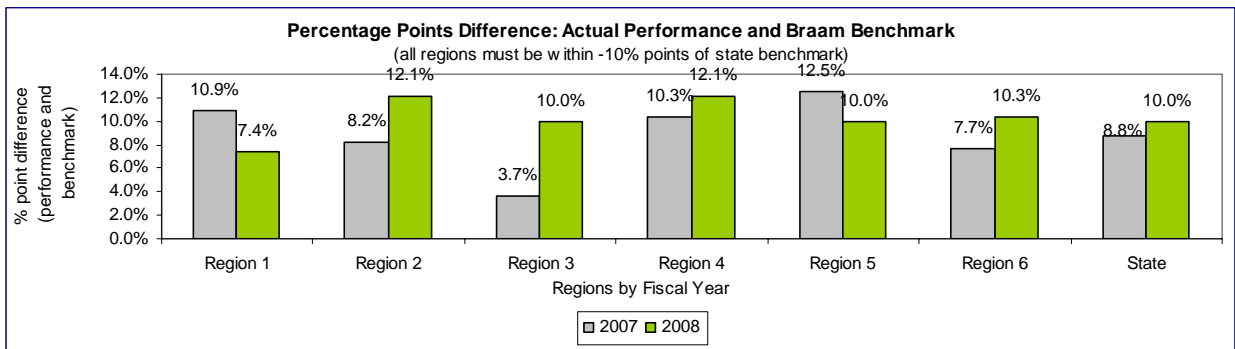
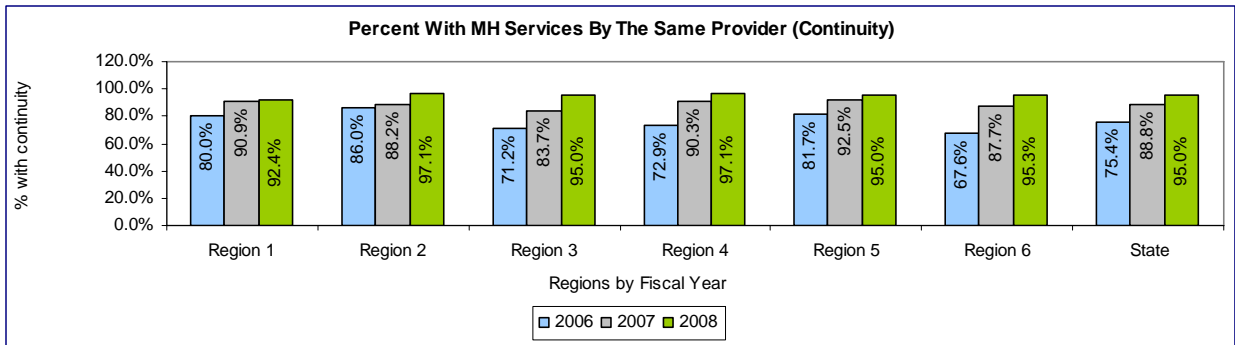
<p>Goal 3, Outcome 2 Children in out-of-home care will be screened for mental health and substance abuse needs every 12 months.</p>		
Benchmarks	Performance	Current Status and Comments
<p>FY08= 80% Statewide benchmark must be met, and no region's performance may be more than 10 percentage points lower than the statewide benchmark.</p>	<p>Acceptable data not available</p>	<p>Failed to reach FY08 benchmark: <u>compliance plan required</u></p> <p>Panel has determined that benchmark has not been reached based on failure to provide data.</p>
<p>Data were due on January 1, 2009. In Monitoring Report #6 (March 2009), the Panel allowed for an extension as a result of delays with the data match required to generate data for this outcome. As of September 2009, data have not yet been provided.</p>		

Goal 4, Outcome 1

Children will receive behavioral health treatment services from the same individual provider for each episode of mental health treatment and/or substance use treatment (from admission to discharge), except where necessary to maintain or improve the quality of care for the child.

Benchmarks	Performance	Current Status and Comments
CY08=85% Statewide benchmark must be met, and no region's performance may be more than 10 percentage points lower than the statewide benchmark.	CY08= 95.0%¹⁵	Reached CY08 benchmark Statewide and regional expectations were achieved.

*Charts below are based on Braam Outcomes/ Survey of Foster Parents & Caregivers
 See also: Complete performance report data on this outcome in Appendix I, page 41*



¹⁵ Note: The methodology for calculating data for this outcome changed beginning with the 2007 data. See survey results in the appendix for details.

Compliance not reviewed in this report (data not due at this time)

Outcome	Benchmarks	Current Status and Comments
<p><u>Goal 1, Outcome 1</u></p> <p>Children will be screened by an appropriate health professional for immediate and urgent physical and mental health needs, including assessment for infectious and communicable diseases, within 72 hours of entering out-of-home care.</p>	<p>FY09= 80%</p>	<p>Compliance for FY09 will be reviewed in April 2010 Monitoring Report.</p> <p>Baseline data for FY08 were due in January 2009, but were not provided. According to Revised Implementation Plan, the first period subject to compliance monitoring is FY09. If data are not provided, outcome will be considered out of compliance.</p>
<p><u>Goal 1, Outcome 2</u></p> <p>Children in out-of-home care 30 days or longer will have completed and documented¹⁶ Child Health and Education Track (CHET) screens within 30 days of entering care.</p>	<p>FY09= 80%</p>	<p>Compliance for FY09 will be reviewed in April 2010 Monitoring Report.</p> <p>FY08 benchmark was not reached (FY08 benchmark= 70%; acceptable statewide data were not submitted). Compliance plan for provision of data was approved in June 2009.</p>
<p><u>Goal 1, Outcome 3</u></p> <p>A shared planning meeting (SPM) focusing on the CHET screening results will be held within 60 days of each child’s entry into care.</p>	<p>FY09=85%</p>	<p>Compliance for FY09 will be reviewed in April 2010 Monitoring Report.</p> <p>FY08 benchmark was not reached (FY08 benchmark= 80%; acceptable statewide data were not submitted). Compliance plan for provision of data was approved in June 2009.</p>
<p><u>Goal 1, Outcome 4</u></p> <p>Children age 3 and under in out-of-home care will be referred to the Infant Toddler Early Intervention Program (ITEIP) within 2 workdays of identification of concerns about developmental delays from their CHET screens.</p>	<p>FY09= 85%</p>	<p>Compliance for FY09 will be reviewed in April 2010 Monitoring Report.</p> <p>Panel previously approved a compliance plan for the provision of data, under which data for this outcome are expected beginning with FY09.</p>
<p><u>Goal 2, Outcome 1</u></p> <p>Children in out-of-home care will have health and education plans (developed based on the findings from all physical health, developmental, educational, mental health and substance abuse health screenings and assessments) in their ISSPs within 60 days of placement.</p>	<p>FY09=80%</p>	<p>Compliance for FY09 will be reviewed in April 2010 Monitoring Report.</p> <p>FY08 benchmark was not reached (FY08 benchmark= 70%; FY08 performance was 75%, but one region fell short of requirements for compliance). CA has proposed a compliance plan; Panel has requested revisions to the proposed plan.</p>

¹⁶ For Braam purposes, a completed and documented CHET is one in which age-appropriate screenings have been completed for all domains: Medical (EPSDT completed for all children); Developmental (developmental screening completed for children ages 0-60 months); Emotional-behavioral (screening completed for children ages 6-18 years); Educational (educational records received for school-aged children); and Connections (for all children).

<p><u>Goal 2, Outcome 2</u> Children in out-of-home care will have health and education plans in their ISSPs updated every 6 months.</p>	<p>FY09=80%</p>	<p>Compliance for FY09 will be reviewed in April 2010 Monitoring Report.</p> <p>FY08 benchmark was not reached (FY08 benchmark= 70%; FY08 performance was 53%). CA has proposed a compliance plan; Panel has requested revisions to the proposed plan.</p>
<p><u>Goal 3, Outcome 1</u> Children in out-of-home care will receive a comprehensive mental health assessment within 30 days of a request for an assessment.</p>	<p>FY09=85%</p>	<p>Compliance for FY09 will be reviewed in April 2010 Monitoring Report.</p> <p>FY08 benchmark was reached (FY08 benchmark= 80%; FY08 performance was 85.7%).</p>
<p><u>Goal 3, Outcome 3</u> Eligible children will receive services from a qualified mental health and/or substance abuse provider within 30 days of the completion of an assessment.</p>	<p>FY09= 90%</p>	<p>Compliance for FY09 will be reviewed in April 2010 Monitoring Report.</p> <p>FY08 benchmark was reached (FY08 benchmark= 85%; FY08 performance was 93.4%).</p>
<p><u>Goal 3, Outcome 4</u> A shared planning meeting will be held by DCFS to develop an appropriate alternative services plan when a child is found ineligible for or denied mental health treatment or substance abuse assessments or treatment services.</p>	<p>FY09= 85%</p>	<p>Compliance for FY09 will be reviewed in April 2010 Monitoring Report.</p> <p>FY08 benchmark was reached (FY08 benchmark= 80%; FY08 performance was 91.7%).</p>

FOSTER PARENT TRAINING AND INFORMATION- OUTCOMES AND BENCHMARKS

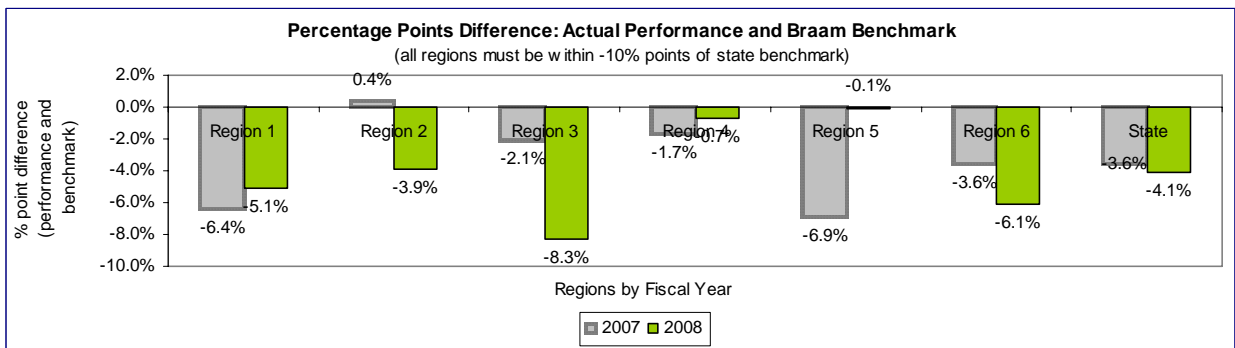
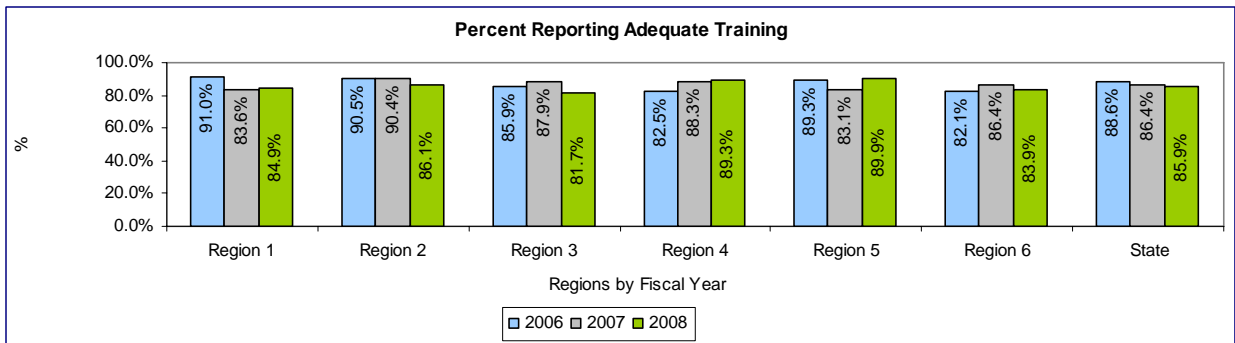
Findings on Outcomes and Benchmarks

Goal 1, Outcome 1

Licensed caregivers will report adequate training for their roles and responsibilities (including, but not limited to, management of emotional, behavioral, developmental and medical problems, educational advocacy, strategies for engagement with birth parents, and cultural competency skills).

Benchmarks	Performance	Current Status and Comments
CY08=90% Statewide benchmark must be met, and no region's performance may be more than 10 percentage points lower than the statewide benchmark.	CY08= 85.9%	Failed to reach CY08 benchmark: <u>updated compliance plan required</u>

*Charts below are based on Braam Outcomes/ Survey of Foster Parents & Caregivers
 See also: Complete performance report data on this outcome in Appendix I, page 15
 See related informational report, p. 46*

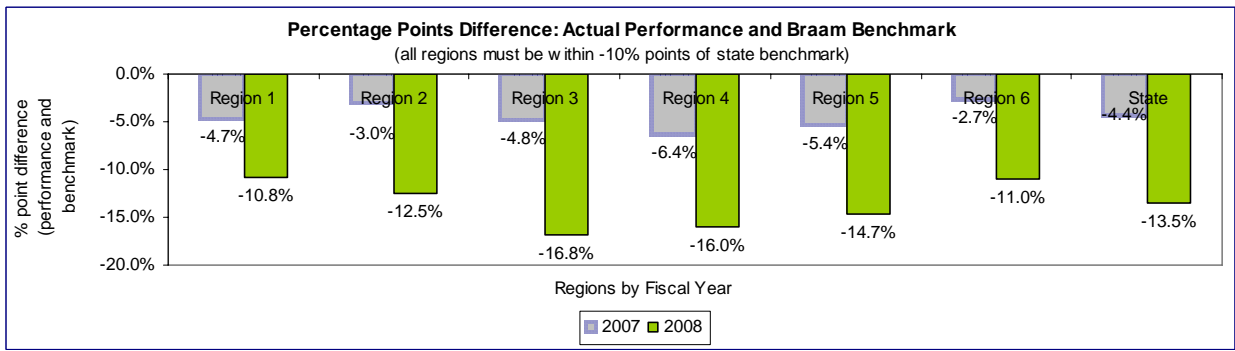
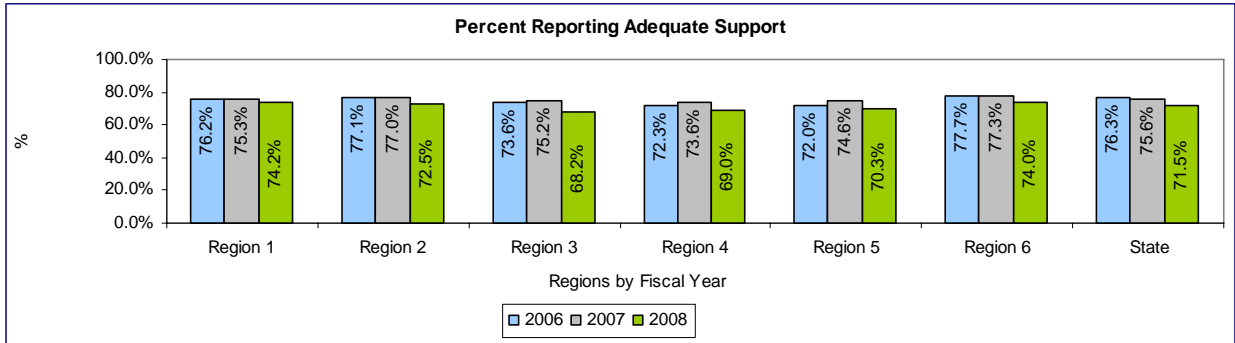


Goal 1, Outcome 2

Licensed caregivers will report adequate support for their roles and responsibilities (including, but not limited to, crisis support, timely notification about case planning meetings, and cultural competency resources).

Benchmarks	Performance	Current Status and Comments
CY08=85% Statewide benchmark must be met, and no region's performance may be more than 10 percentage points lower than the statewide benchmark.	CY08= 71.5%¹⁷	Failed to reach CY08 benchmark: <u>updated compliance plan required</u>

*Charts below are based on Braam Outcomes/ Survey of Foster Parents & Caregivers
 See also: Complete performance report data on this outcome in Appendix I, page 17
 See related informational report, p. 47*



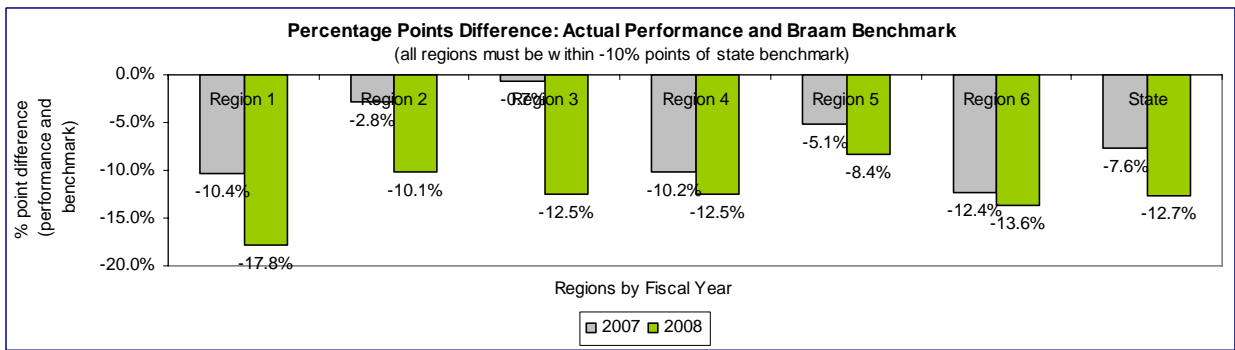
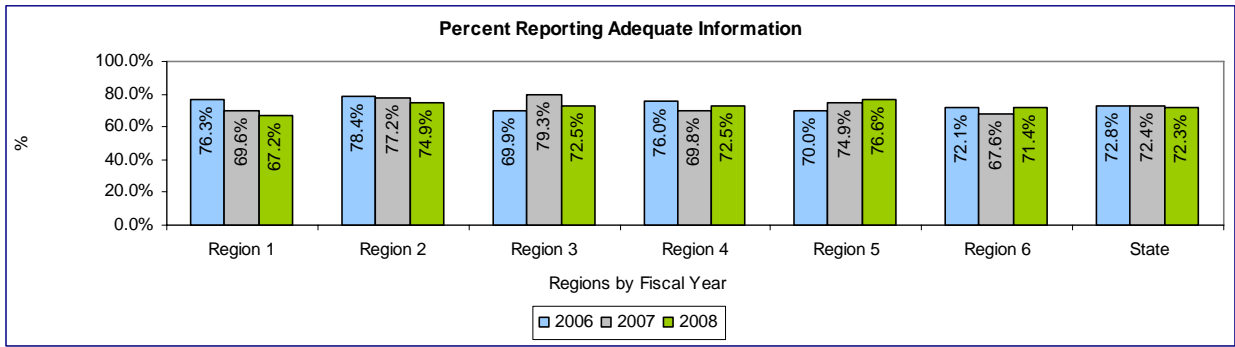
¹⁷ Note: The methodology for calculating data for this outcome changed beginning with the 2007 data. See survey results in the appendix for details.

Goal 1, Outcome 3

Licensed caregivers will report adequate provision of information about the needs of children placed with them (including, but not limited to, behavioral, medical, developmental and educational needs).

Benchmarks	Performance	Current Status and Comments
CY08=85% Statewide benchmark must be met, and no region's performance may be more than 10 percentage points lower than the statewide benchmark.	CY08= 72.3% ¹⁸	Failed to reach CY08 benchmark: <u>updated compliance plan required</u>

*Charts below are based on Braam Outcomes/ Survey of Foster Parents & Caregivers
 See also: Complete performance report data on this outcome in Appendix I, page 21
 See related informational report, p. 48*



¹⁸ Note: The methodology for calculating data for this outcome changed beginning with the 2007 data. See survey results in the appendix for details.

UNSAFE/ INAPPROPRIATE PLACEMENT- OUTCOMES AND BENCHMARKS

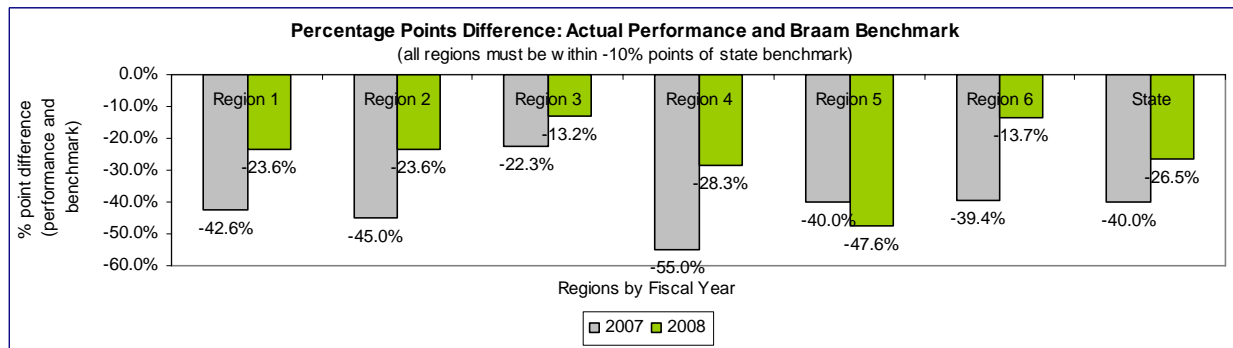
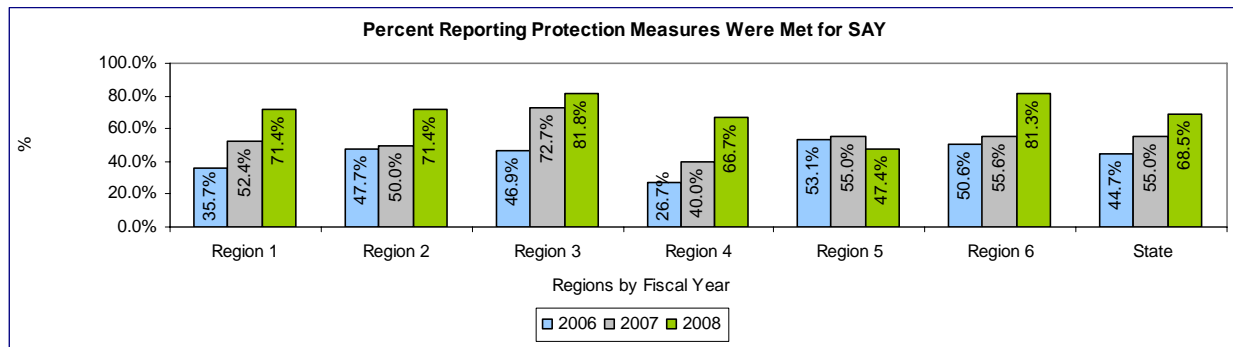
Findings on Outcomes and Benchmarks

Goal 1, Outcome 3

Children identified as sexually aggressive (SAY) pursuant to the statutory definition will be placed with caregivers who have received specialized training and have a plan developed to address safety and supervision issues.

Benchmarks	Performance	Current Status and Comments
CY08=95%	CY08= 68.5% ¹⁹	Failed to reach CY08 benchmark: updated compliance plan required

*Charts below are based on Braam Outcomes/ Survey of Foster Parents & Caregivers
See also: Complete performance report data on this outcome in Appendix I, page 31
See related informational report, p. 49*



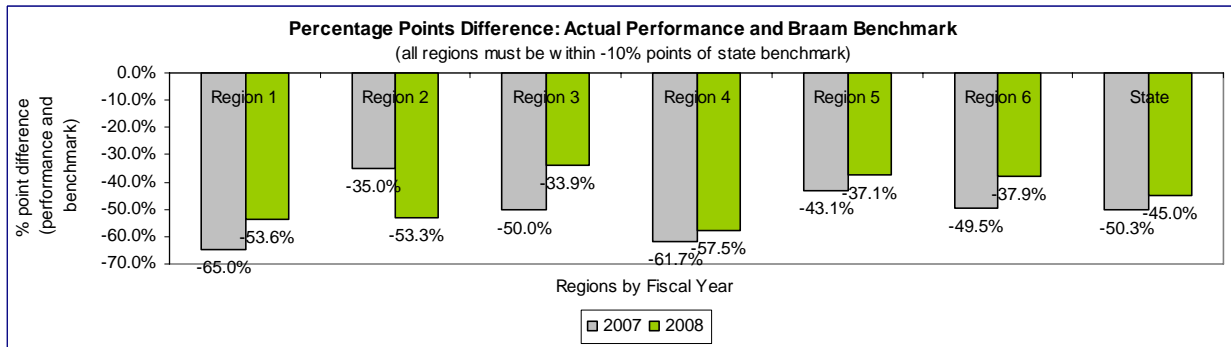
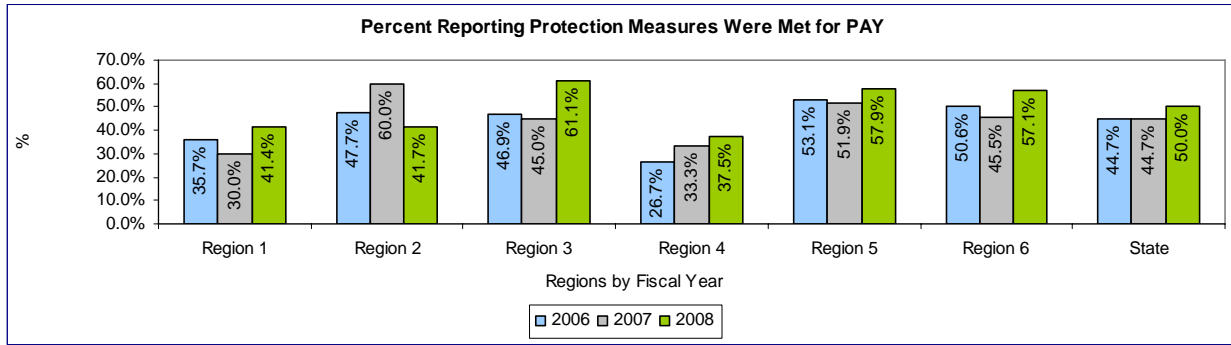
¹⁹ Note: The methodology for calculating data for this outcome changed beginning with the 2007 data. In addition, a definition of “sexually aggressive youth” was added in 2008. See survey results in the appendix for details.

Goal 1, Outcome 4

Children identified as physically assaultive or physically aggressive (PAY) pursuant to the statutory definition will be placed with caregivers who have received specialized training and have a plan developed to address safety and supervision issues.

Benchmarks	Performance	Current Status and Comments
CY08=95%	CY08= 50.0% ²⁰	Failed to reach CY08 benchmark: <u>updated compliance plan required</u>

*Charts below are based on Braam Outcomes/ Survey of Foster Parents & Caregivers
See also: Complete performance report data on this outcome in Appendix I, page 35
See related informational report, p. 50*



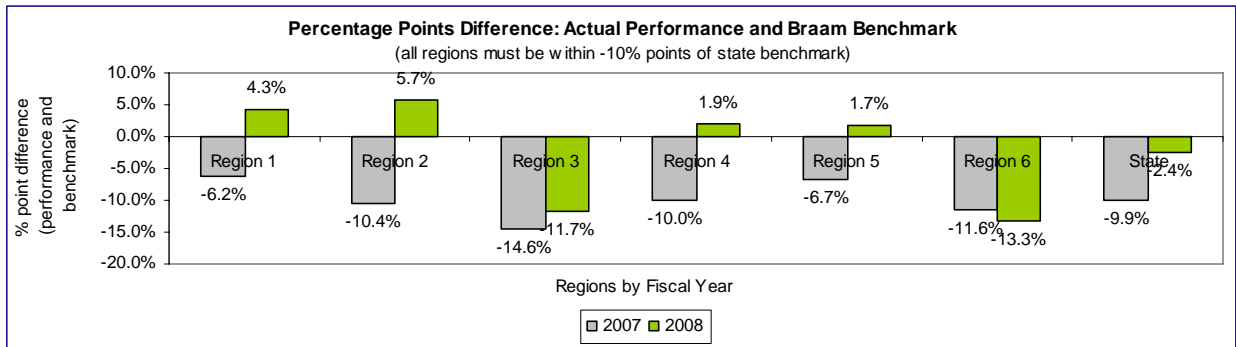
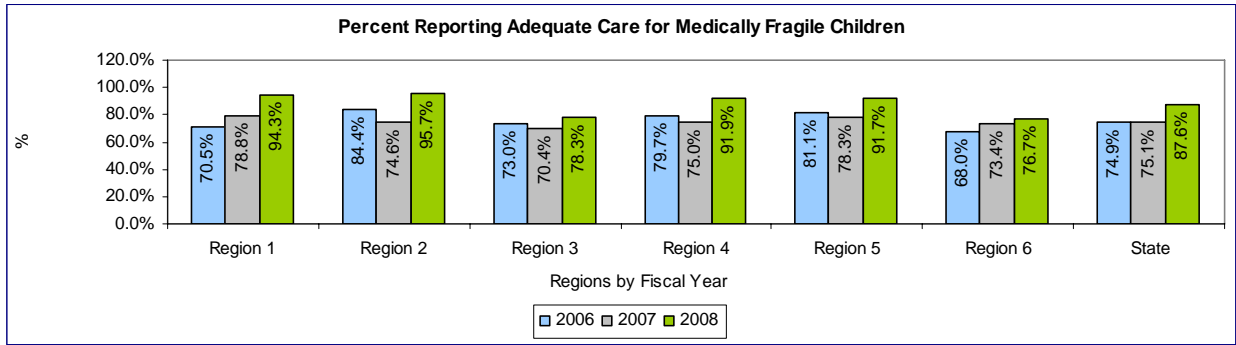
²⁰ Note: The methodology for calculating data for this outcome changed beginning with the 2007 data. In addition, a definition of “physically aggressive youth” was added in 2008. See survey results in the appendix for details.

Goal 1, Outcome 5

Medically fragile children will be connected to ongoing and appropriate medical care and placed with caregivers who have specialized skills or receive consultation and ongoing training regarding their caretaking responsibilities for the medical condition.

Benchmarks	Performance	Current Status and Comments
CY08=90%	CY08= 87.6% ²¹	Failed to reach CY08 benchmark: <u>updated compliance plan required</u>

*Charts below are based on Braam Outcomes/ Survey of Foster Parents & Caregivers
See also: Complete performance report data on this outcome in Appendix I, page 26*



²¹ Note: The methodology for calculating data for this outcome changed beginning with the 2007 data. In addition, a definition of “medically fragile” was added in 2008. See survey results in the appendix for details.

Compliance not reviewed in this report (data not due at this time)

Outcome	Benchmarks	Current Status and Comments
<u>Goal 1, Outcome 1</u> Children will not be placed in institutions not designed for placement of foster children, such as adult mental hospitals or detoxification facilities, where children and adults are commingled.	FY09=0	Compliance for FY09 will be reviewed in April 2010 Monitoring Report FY08 benchmark was reached (FY08 benchmark= 0 statewide performance was 0).
<u>Goal 1, Outcome 2</u> Children will not stay overnight at DSHS offices or in apartments or hotels <i>unless</i> : - An appropriate licensed foster family or relative caregiver is not available, administrative approval has been granted, and adequate supervision is provided for the child as required in the Department's November 2004 memo to CA staff, or - The youth has an Independent Living Plan authorizing such placement.	FY09=0	Compliance for FY09 will be reviewed in April 2010 Monitoring Report FY08 benchmark was reached (FY08 benchmark= 0 statewide performance was 0).
<u>Goal 1, Outcome 6</u> Children will receive a private and individual face-to-face health and safety visit from an assigned caseworker at least once every calendar month, with no visit being more than 40 days after the previous visit.	FY09= 95%	Compliance for FY09 will be reviewed in April 2010 Monitoring Report FY08 benchmark was not reached (FY08 benchmark= 95%; FY08 performance based on administrative data= 10.5%, CY07 performance based on foster parent survey was 43.2%). Compliance plan was approved in June 2009. Foster parent survey data for CY08 show performance of 68.9%. Panel will treat foster parent survey data as informational, and will review compliance in the April 2010 Monitoring Report based on administrative data.
<u>Goal 2, Outcome 1</u> The percentage of children who are not victims of a founded report of child abuse or neglect by a foster parent or facility staff member will meet or exceed the federal Child and Family Services Review (round 2) standard.	FFY08= 99.68%	Compliance for FFY08 will be reviewed in the April 2010 Monitoring Report FFY07 benchmark was reached (FFY07 benchmark was 99.68%, FFY07 performance was 99.77%).
<u>Goal 2, Outcome 2</u> All referrals alleging child abuse and neglect of children in out-of-home care will receive thorough investigation by the Division of Licensing Resources (DLR) pursuant to CA policy and timeline and with required documentation.	FY09=100%	Compliance for FY09 will be reviewed in April 2010 Monitoring Report FY08 benchmark was not reached (FY08 benchmark= 100%; FY08 performance=90.9%). Compliance plan was approved in June 2009.

SIBLING SEPARATION- OUTCOMES AND BENCHMARKS

Findings on Outcomes and Benchmarks

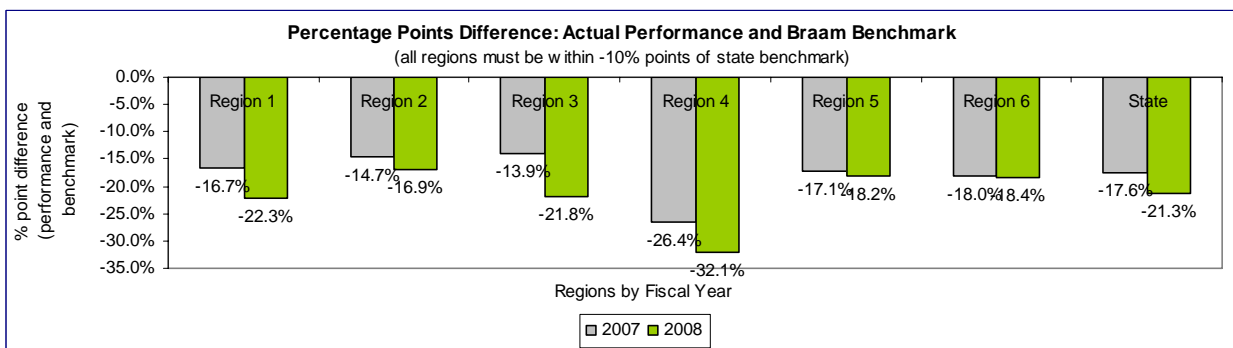
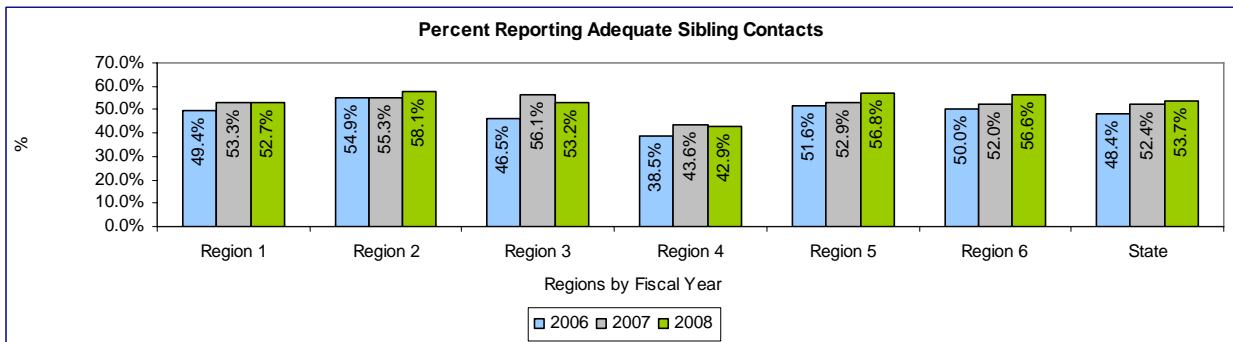
Goal 2, Outcome 1

Children placed apart from their siblings will have two or more monthly visits or contacts (not including staffing meetings or court events) with some or all of their siblings.

- If the CA or the court determines that visitation/contact poses a risk to either child's health, safety or welfare, this finding will be approved by the supervisor and documented in the child's file.

Benchmarks	Performance	Current Status and Comments
CY08=75% Statewide benchmark must be met, and no region's performance may be more than 10 percentage points lower than the statewide benchmark.	CY08=53.7% ²²	Failed to reach CY08 benchmark: updated compliance plan required

*Charts below are based on Braam Outcomes/ Survey of Foster Parents & Caregivers
See also: Complete performance report data on this outcome in Appendix I, page 44*



²² Note: The methodology for calculating data for this outcome changed beginning with the 2007 data.

Compliance not reviewed in this report (data not due at this time)

Outcome	Benchmarks	Current Status and Comments
<p><u>Goal 1, Outcome 1</u> Children in out-of-home care will be placed with all siblings who are also in out-of-home care whenever possible.</p>	<p>FY09=70%</p>	<p>Compliance for FY09 will be reviewed in April 2010 Monitoring Report</p> <p>FY08 benchmark was not reached (FY08 benchmark= 65%, FY08 performance= 56.7%). CA has proposed a compliance plan; Panel has requested clarifications about the proposed plan before it can be approved.</p>
<p><u>Goal 1, Outcome 2</u> Children in out-of-home care will be placed with at least one sibling who is also in out-of-home care whenever possible.</p>	<p>FY09= 90%</p>	<p>Compliance for FY09 will be reviewed in April 2010 Monitoring Report</p> <p>FY08 benchmark was not reached (FY08 benchmark= 90%, FY08 performance= 79%). CA has proposed a compliance plan; Panel has requested clarifications about the proposed plan before it can be approved.</p>

SERVICES TO ADOLESCENTS- OUTCOMES AND BENCHMARKS

Findings on Outcomes and Benchmarks

<p><u>Goal 2, Outcome 2</u> The percentage of youth in out-of-home placement in grade 9 who remained in placement continuously through grade 12 who graduate from high school on time with a regular or adult (IEP) diploma, including students with disabilities who graduated within the number of years designated in their IEP, will increase.</p>		
Benchmarks	Performance	Current Status and Comments
<p>FY08=50% Statewide benchmark must be met, and no region's performance may be more than 10 percentage points higher than the statewide benchmark.</p>	<p>Acceptable data not available</p>	<p>Failed to reach FY08 benchmark: <u>compliance plan required</u></p> <p>Panel has determined that benchmark has not been reached based on failure to provide data.</p>
<p>Data were due on January 1, 2009. In Monitoring Report #6 (March 2009), the Panel allowed for an extension as a result of delays with the data match required to generate data for this outcome. As of September 2009, data have not yet been provided.</p>		

Goal 2, Outcome 3

A multi-disciplinary staffing meeting will be held six months prior to a youth's exit from foster care to address issues related to transition to independence.

Benchmarks	Performance	Current Status and Comments
CY08=75% Statewide benchmark must be met, and no region's performance may be more than 10 percentage points higher than the statewide benchmark.	Acceptable data not available	Failed to reach FY08 benchmark: <u>compliance plan required</u> Panel has determined that benchmark has not been reached based on failure to provide data.

Data were due August 1, 2009 and were not provided.

Compliance not reviewed in this report (data not due at this time)

Outcome	Benchmarks	Current Status and Comments
<p><u>Goal 2, Outcome 1</u> The number of children (<i>excluding youth placed with relatives and/or with siblings</i>) who experience a change in school placement when they enter out-of-home care or change placement during the school year will decrease.</p>	<p>FY09=30%</p>	<p>Compliance for FY09 will be reviewed in April 2010</p> <p>FY08 benchmark was reached (FY benchmark= 40%, FY08 performance was 20%). Note that lower performance (i.e. a lower percentage of children changing schools) is better.</p>
<p><u>Goal 3, Outcome 1</u> The percentage of children who run from out-of-home care placements during the fiscal year will decrease.</p>	<p>FY09=2.5%</p>	<p>Compliance for FY09 will be reviewed in April 2010</p> <p>FY08 benchmark was not reached (FY benchmark= 3.0%, FY08 performance was 3.6%). Note that lower performance (i.e. a lower percentage of children running away) is better. Compliance plan was approved in June 2009.</p>
<p><u>Goal 3, Outcome 2</u> The median number of days that children are on runaway status will decrease.</p>	<p>FY09=30 days</p>	<p>Compliance for FY09 will be reviewed in April 2010</p> <p>FY08 benchmark was not reached (FY benchmark= 35 days, FY08 performance was 33 days, but one region's performance did not meet compliance requirements). Note that lower performance (i.e. children running away for a shorter period of time) is better. Compliance plan was approved in June 2009.</p>

PART III: INFORMATIONAL REPORTS

In the Revised Implementation Plan (July 3, 2008), a number of areas identified as outcomes in the original Implementation Plan were converted to “Informational Reports.” Requests for Informational Reports were also added in several new areas.

As stated in the Revised Implementation Plan, “in areas identified for Informational Reports, the Panel will require annual submission of data by the Department (including performance by region and by racial/ethnic subcategories), but will not set forth or assess compliance with annual benchmarks. Informational Reports will provide the Panel, parties, and stakeholders with extensive data to better understand progress toward Braam goals and outcomes. Upon review of Informational Reports, the Panel reserves the right to reinstate or develop new outcomes and benchmarks.”

Although many of the Informational Reports are closely related to Braam outcomes, the Panel is presenting these reports separately in this Monitoring Report. In the section of the Monitoring Report devoted to Braam outcomes (Part II), the Panel has made findings related to the Department’s performance with respect to the benchmarks, and has required compliance plans in areas in which benchmarks are not reached. In this section of the Monitoring Report (Part III), devoted to the Informational Reports, there are no benchmarks for performance; therefore, there is no assessment of compliance.

Beginning on page 40, the Informational Reports required under the Revised Implementation Plan and the status of these Reports are listed. Beginning on page 44, the informational reports required for this Monitoring Report are presented.

STATUS OF INFORMATIONAL REPORTS

Status of Informational Reports

The Revised Implementation Plan requires informational reports for each area of the settlement agreement, and specifies due dates for the submission of these data based on data source.

Informational Reports due August 2009

The Revised Implementation Plan requires the informational reports listed below on an annual basis in August of each year. All of the informational reports required for this Monitoring Report are derived from the foster parent survey reports completed in August 2009, with the exception of the informational reports related to Services to Adolescents, Goal 2, Outcome 3 (multi-disciplinary staffing meeting prior to exit). No data has been provided by CA for this outcome or the related informational reports.

Note that the informational reports due for this Monitoring Report are shown beginning on p. 44.

Informational Report
Placement Stability
No informational reports due for this Monitoring Report
Mental Health
<u>Additional Informational Reports- Mental Health</u>
Percentage of foster parents surveyed who report that, if mental health crisis services were needed, they were provided in a timely manner
Foster Parent Training and Information
<u>Goal 1, Outcome 1- Foster parents reporting adequate training</u>
Percentage of <u>unlicensed</u> caregivers reporting adequate training for their roles and responsibilities
<u>Goal 1, Outcome 2- Foster parents reporting adequate support</u>
Percentage of <u>unlicensed</u> caregivers reporting adequate support for their roles and responsibilities
<u>Goal 1, Outcome 3- Foster parents reporting adequate information</u>
Percentage of <u>unlicensed</u> caregivers reporting adequate provision of information about the needs of children placed with them
Unsafe and Inappropriate Placements
<u>Goal 1, Outcome 3- Sexually aggressive youth</u>
<ul style="list-style-type: none"> • Percentage of supervision plans discussed with caregivers • Percentage of supervision plans completed in written format
<u>Goal 1, Outcome 4- Physically assaultive/ aggressive youth</u>
<ul style="list-style-type: none"> • Percentage of supervision plans discussed with caregivers • Percentage of supervision plans completed in written format
Sibling Separation
No informational reports due for this Monitoring Report
Services to Adolescents
<u>Goal 2, Outcome 3- Multi-disciplinary staffing meeting prior to exit</u>
<ul style="list-style-type: none"> • Ansell-Casey Life Skills Assessment (ACLSA)- Percentage of youth (age 15-18) surveyed reporting that they completed an ACLSA • Development of Independent Living (IL) Plan- Percentage of youth (age 15-18) surveyed reporting that they were invited to develop an IL plan

Informational Reports not due at this time

The following informational reports are required on an annual basis in February. Reports will be included in the April 2010 Monitoring Report.

Informational Report
Placement Stability
<u>Placement Stability- goal 1, outcome 1 (ratio of licensed beds to children in foster care)</u> <ol style="list-style-type: none">1. Ratio of beds to children by subcategories: Caregivers with preferences/required equipment for specific age groups (infant, child, adolescent)2. Ratio of beds to children by subcategories: Level of care: regular family foster care, enhanced family foster care, therapeutic foster care, congregate care, respite care3. Foster home retention: Percentage of foster homes remaining active 1, 2, 3, 4 and 5 years after being licensed
<u>Placement Stability- goal 1, outcome 2 (two or fewer placements)</u> <ul style="list-style-type: none">o Two or fewer placements- expanded report based on outcome: Year-by-year data showing the percentage of youth entering care during the previous five fiscal years who experience two or fewer placements during their current episode of out-of-home care (with time in care specifications based on entry year).o Multiple placements- Frequency report showing the number of children experiencing multiple placements, by number of placements.
<u>Placement stability- goal 1, outcome 3 (caseload size)</u> <ul style="list-style-type: none">o Caseload size by office- Percentage caseworkers with caseloads at or below Council on Accreditation (COA) standards
<u>Placement stability- additional informational reports</u> <p>Matching between a child's needs and the capacity of the placement to meet those needs</p> <ul style="list-style-type: none">o Percentage of children placed in relative placementso Percentage of children placed in foster homes licensed for the age of the child placedo Percentage of children for whom Family Team Decision Meeting (FTDM) was held within 72 hours of placemento Percentage of children who change placements within the first 8 days of entry into out-of-home care
Mental Health
<u>Mental Health- Goal 1, Outcome 2- CHET screening within 30 days</u> <ul style="list-style-type: none">o Percentage of children with completed CHET screens within 45 and 60 days of entry into careo Medical screening<ul style="list-style-type: none">o Percentage of children with completed EPSDT exams within 30, 45 and 60 days of entry into careo Developmental screening<ul style="list-style-type: none">o Percentage of children ages 0-60 months with completed developmental screens within 30, 45 and 60 days of entry into careo Emotional/ behavioral screening<ul style="list-style-type: none">o Percentage of children ages 6-18 years with completed Child Behavior Checklists within 30, 45 and 60 days of entry into careo Educational records<ul style="list-style-type: none">o Percentage of school-aged children for whom educational records are received within 30, 45 and 60 days of entry into care
<u>Mental Health Goal 1, Outcome 3- Shared planning meeting focused on the CHET screening results</u> <ul style="list-style-type: none">o Attendance at Shared Planning Meetings (SPM)- Percentage of SPMs focused on CHET screening results attended by: children age 12 and above, caregivers, birth parents/legal guardians, tribal representatives (when applicable), and children's representatives (note: report

should provide separate information on each type of individual)
<u>Mental Health Goal 3, Outcome 3- Mental health services within 30 days of the completion of an assessment</u>
<ul style="list-style-type: none"> ○ Child and Family Services Review (CFSR) mental health item- CFSR item #23—examines whether children’s mental health needs were adequately identified and services provided to meet those needs
<u>Mental Health Goal 3, Outcome 4- Alternative services when children are denied/ found ineligible for mental health or substance abuse services</u>
<ul style="list-style-type: none"> ○ Information on cases in which children are denied/ found ineligible for services <ul style="list-style-type: none"> ○ For <u>each</u> child denied or found ineligible: <ul style="list-style-type: none"> ▪ Reason the child was found ineligible or services were denied ▪ Type of alternative services provided
<u>Additional Informational Reports- Mental Health</u>
Sharing mental health information
<ul style="list-style-type: none"> ○ Percentage of cases in which applicable mental health information is shared with individuals involved in a child’s case (consistent with confidentiality requirements): <ul style="list-style-type: none"> ○ Applicable mental health information includes: the CHET screening report and recommendations from the Shared Planning Meeting, health and education plan in the ISSP, and annual mental health screening and assessment results ○ Individuals involved in a child’s case include: children age 12 and above, caregivers, birth parents/legal guardians, mental health and/or substance abuse providers, tribal representatives (when applicable), and children’s representatives (note: report should provide separate information on each type of individual)
<u>Foster Parent Training and Information</u>
<u>Additional Annual Informational Reports- Foster Parent Training and Information</u>
<ul style="list-style-type: none"> ○ In-service training <ul style="list-style-type: none"> ○ Percentage of licensed caregivers who meet the in-service training requirement at the time of license renewal (36 hours of in-service training for the three-year period or, during the phase-in period for this policy, a pro-rated requirement) ○ Assessment and Development Plans <ul style="list-style-type: none"> ○ Percentage of licensed caregivers receiving annual assessment and development plans
<u>Unsafe and Inappropriate Placement</u>
<u>Unsafe and Inappropriate Placements- Goal 1, Outcome 2- Children will not stay overnight at DSHS offices or in apartments or hotels</u>
<ul style="list-style-type: none"> ○ Repeated daily stays at DSHS offices (proxy measure)- Number of children experiencing more than two placements within a 48 hour period
<u>Unsafe and Inappropriate Placements- Goal 2, Outcome 2- Thorough and timely review of DLR/ CPS referrals</u>
Summary data
<ul style="list-style-type: none"> ○ Characteristics of the alleged victimization (e.g., age, gender, perpetrator, type of out-of-home setting) ○ Outcomes of the investigation (e.g., time from referral to completion of investigation, including any removal action)
<u>Services to Adolescents</u>
<u>Services to Adolescents- Goal 3, Outcome 1- Percentage of children who run from out-of-home care placements</u>
<ul style="list-style-type: none"> ○ Multiple runaway events- Percentage of children in care who have run away multiple times during the fiscal year, disaggregated by the number of running events

Services to Adolescents- Goal 3, Outcome 2- Median number of days children are on runaway status

- Mean number of days that children are on runaway status

Additional Annual Informational Reports- Services to Adolescents

- Timely school enrollment
 - Percentage of children enrolled in school within 3 school days of entry into foster care or a placement change
- Performance on Washington Assessment of Student Learning (WASL)
 - Comparison of WASL scores for youth currently in foster care and other children
- Grade Level
 - Percentage of children at the age-appropriate grade level (note: these data will not be available until the implementation of FamLink)
- Annual dropout rate
 - Annual drop-out rate for high-school-aged youth in out-of-home care for 30 days or more during the reporting year
- GED
 - Percentage of aging-out youth with a GED

INFORMATIONAL REPORTS

Informational reports provided for this Monitoring Report are shown on the following pages. All reports included here are derived from the 2009 survey of foster parents and caregivers.

MENTAL HEALTH- INFORMATIONAL REPORTS

INFORMATIONAL REPORTS ASSOCIATED WITH MENTAL HEALTH

Additional informational reports: *Crisis mental health services*- Percentage of foster parents surveyed who report that, if mental health crisis services were needed, they were provided in a timely manner

For foster parents reporting that children needed crisis mental health services were needed, **83.5%** reported that they were provided in a timely manner.

FOSTER PARENT TRAINING AND INFORMATION- INFORMATIONAL REPORTS

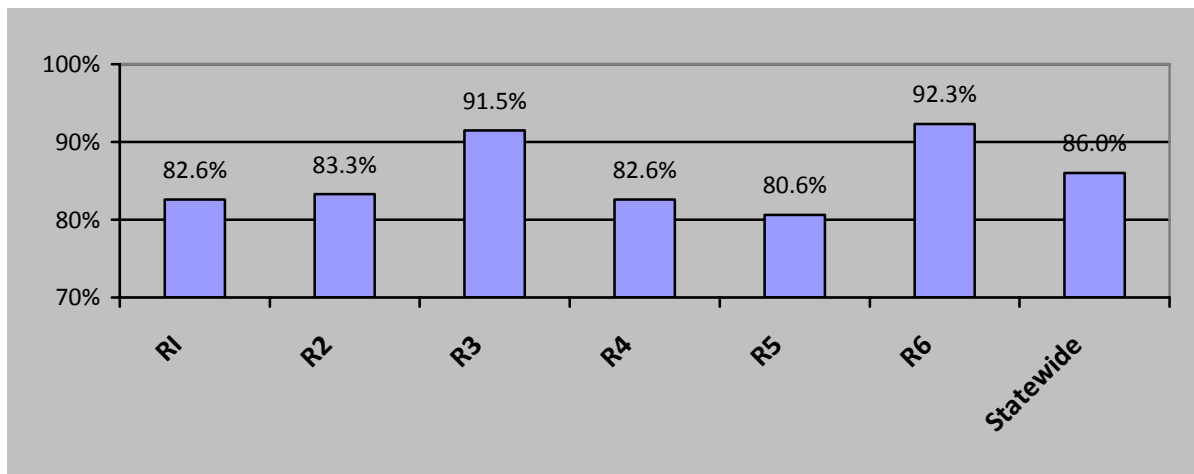
Goal 1, Outcome 1

Licensed caregivers will report adequate training for their roles and responsibilities (including, but not limited to, management of emotional, behavioral, developmental and medical problems, educational advocacy, strategies for engagement with birth parents, and cultural competency skills).

Benchmarks	Performance	Current Status and Comments
CY08=90% Statewide benchmark must be met, and no region's performance may be more than 10 percentage points lower than the statewide benchmark.	CY08= 85.9%	Failed to reach CY08 benchmark: <u>updated compliance plan required</u>
<ul style="list-style-type: none"> See page 27 for detail related to this outcome Informational report is provided below 		

INFORMATIONAL REPORTS ASSOCIATED WITH GOAL 1, OUTCOME 1

Percentage of unlicensed caregivers reporting adequate training for their roles and responsibilities



Panel comments: Panel notes that, although statewide performance for unlicensed caregivers is almost identical to performance for licensed caregivers, there are significant differences at the regional level between the two types of caregivers.

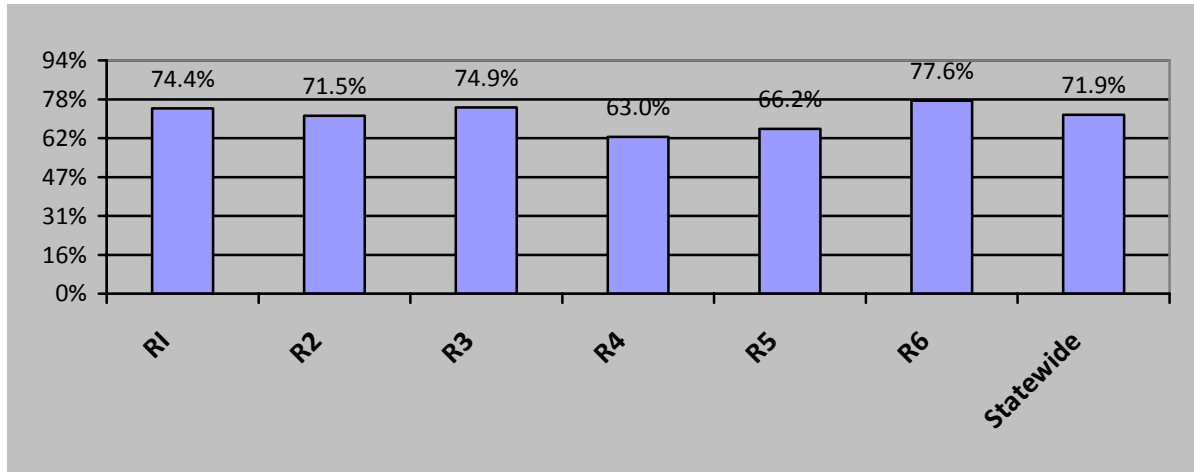
Goal 1, Outcome 2

Licensed caregivers will report adequate support for their roles and responsibilities (including, but not limited to, crisis support, timely notification about case planning meetings, and cultural competency resources).

Benchmarks	Performance	Current Status and Comments
CY08=85% Statewide benchmark must be met, and no region's performance may be more than 10 percentage points lower than the statewide benchmark.	CY08= 71.5%	Failed to reach CY08 benchmark: <u>updated compliance plan required</u>
<ul style="list-style-type: none"> • See page 28 for detail related to this outcome • Informational report is provided below 		

INFORMATIONAL REPORTS ASSOCIATED WITH GOAL 1, OUTCOME 2

Percentage of unlicensed caregivers reporting adequate support for their roles and responsibilities



Panel comments: Panel notes that, although statewide performance for unlicensed caregivers is almost identical to performance for licensed caregivers, there are significant differences at the regional level between the two types of caregivers.

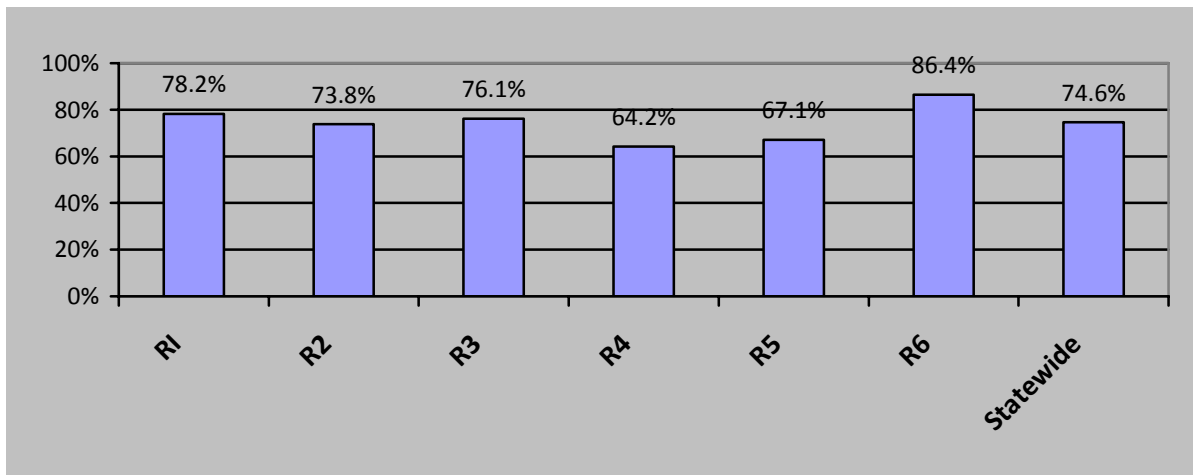
Goal 1, Outcome 3

Licensed caregivers will report adequate provision of information about the needs of children placed with them (including, but not limited to, behavioral, medical, developmental and educational needs).

Benchmarks	Performance	Current Status and Comments
CY08=85% Statewide benchmark must be met, and no region's performance may be more than 10 percentage points lower than the statewide benchmark.	CY08= 72.3%	Failed to reach CY08 benchmark: <u>updated compliance plan required</u>
<ul style="list-style-type: none"> • See page 29 for detail related to this outcome • Informational report is provided below 		

INFORMATIONAL REPORTS ASSOCIATED WITH GOAL 1, OUTCOME 3

Percentage of unlicensed caregivers reporting adequate provision of information about the needs of children placed with them



UNSAFE AND INAPPROPRIATE PLACEMENTS- INFORMATIONAL REPORTS

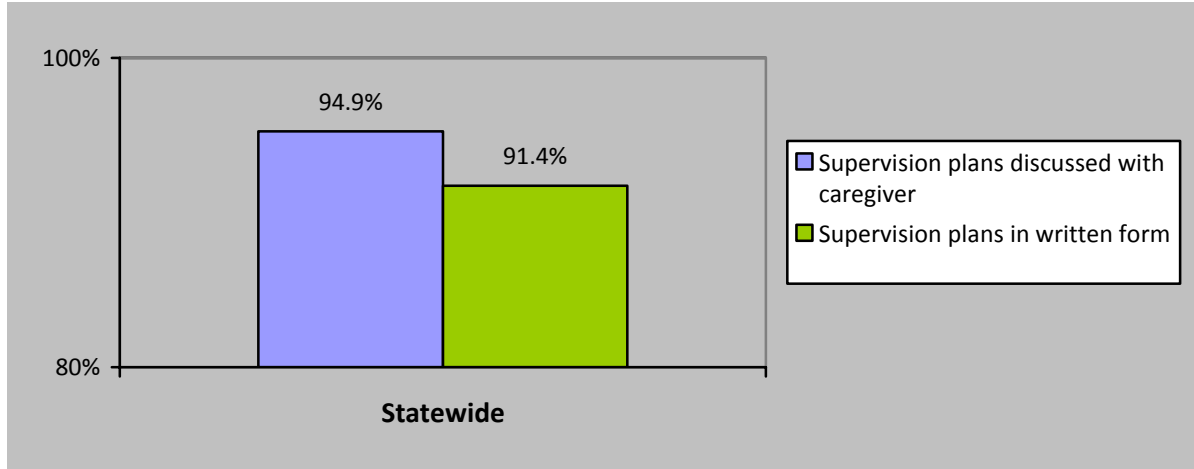
Goal 1, Outcome 3

Children identified as sexually aggressive (SAY) pursuant to the statutory definition will be placed with caregivers who have received specialized training and have a plan developed to address safety and supervision issues.

Benchmarks	Performance	Current Status and Comments
CY08=95%	CY08= 68.5%	<u>Failed to reach CY08 benchmark: updated compliance plan required</u>
<ul style="list-style-type: none"> • See page 30 for detail related to this outcome • Informational reports are provided below 		

INFORMATIONAL REPORTS ASSOCIATED WITH GOAL 1, OUTCOME 3

- *Supervision Plans*
 - Percentage of supervision plans discussed with caregivers
 - Percentage of supervision plans completed in written format



Goal 1, Outcome 4

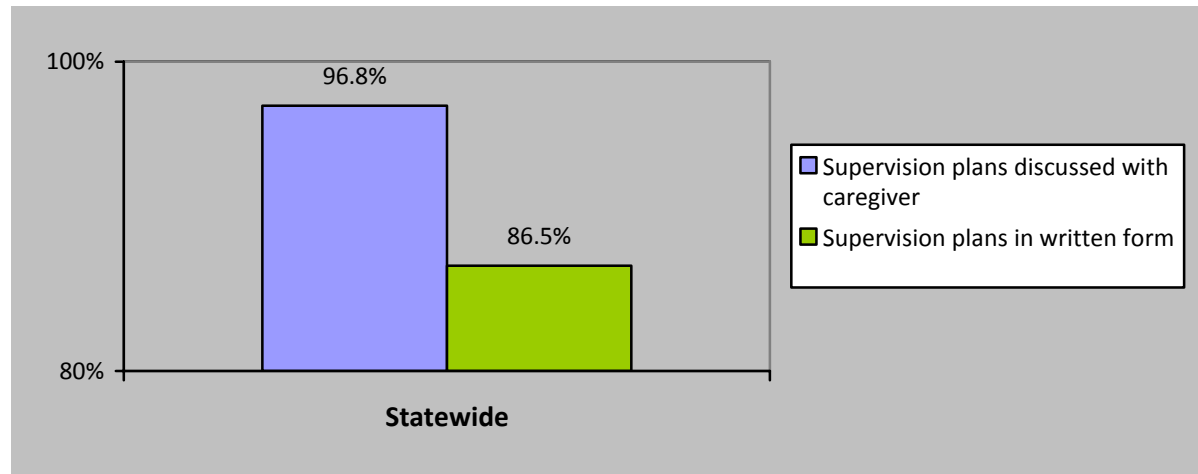
Children identified as physically assaultive or physically aggressive (PAY) pursuant to the statutory definition will be placed with caregivers who have received specialized training and have a plan developed to address safety and supervision issues.

Benchmarks	Performance	Current Status and Comments
CY08= 95%	CY08= 50.0%	Failed to reach CY08 benchmark: <u>updated compliance plan required</u>

- See page 31 for detail related to this outcome
- Informational reports are provided below

INFORMATIONAL REPORTS ASSOCIATED WITH GOAL 1, OUTCOME 4

- *Supervision Plans*
 - Percentage of supervision plans discussed with caregivers
 - Percentage of supervision plans completed in written format



SERVICES TO ADOLESCENTS- INFORMATIONAL REPORTS

Goal 2, Outcome 3

A multi-disciplinary staffing meeting will be held six months prior to a youth's exit from foster care to address issues related to transition to independence.

Benchmarks	Performance	Current Status and Comments
<p>CY08=75% Statewide benchmark must be met, and no region's performance may be more than 10 percentage points higher than the statewide benchmark.</p>	<p>Acceptable data not available</p>	<p>Failed to reach FY08 benchmark: <u>compliance plan required</u> Panel has determined that benchmark has not been reached based on failure to provide data.</p>
<ul style="list-style-type: none"> • See page 38 for detail related to this outcome • Informational reports are provided below 		

INFORMATIONAL REPORTS ASSOCIATED WITH GOAL 2, OUTCOME 3

- Ansell-Casey Life Skills Assessment (ACLSA)- Percentage of youth (age 15-18) surveyed reporting that they completed an ACLSA
- Development of Independent Living (IL) Plan- Percentage of youth (age 15-18) surveyed reporting that they were invited to develop an IL plan

Data were not provided by the Department.