

**APPENDIX II**  
**Monitoring Report #5-- October 1, 2008**

---

**FY07 Braam Performance Report (regional report)**

## BRAAM REGIONAL PERFORMANCE REPORT: FY05 – FY07 (MAY08 UPDATE)

This report presents information about regional performance on Braam Benchmark measures included in the Braam Implementation Plan. Data presented in this report were developed by the Decision Support Unit, Finance and Operations Support Division, Children's Administration (CA), Department of Social and Health Services. The Case and Management Information System (CAMIS) was the source for performance data, unless otherwise noted. Every care has been taken to ensure that these data are accurate and complete.

Three performance reports have been produced in FY07 for the Braam Panel. Performance data are summarized by fiscal year and CA Region in this Report, along with a presentation of additional descriptive information requested by the Braam Panel. A separate report, the *Braam Race and Ethnicity Report* provides cross tabulations on all performance measures by both region and race/ethnicity. *The Braam Benchmark Report* presents statewide performance on all benchmark measures with data.

The construction of measures to evaluate changes in the Administration's performance over time has been accomplished through collaborative work between the Decision Support Unit (DSU) and representatives of the Braam Panel. While the Children's Administration has been evaluating its own performance for many years, these benchmarks required the development of many new measures to support the unique interests of the Braam Panel.

Caution should be exercised when using data from this report to describe current CA children, resources or services. These measures were constructed to a) be sensitive to changes in CA performance over time, and b) incorporate specific Braam Panel rules about data inclusion. Therefore, they may not be consistent with other descriptions of CA client characteristics, resources or service patterns. The annual CA Performance Report and the quarterly Vulnerable Children and Adults GMAP presentations provide additional views of CA performance and resources.

The rapid development of the Braam measures along with the challenges inherent in working with CAMIS administrative data brings with it the potential for unintended errors or omissions in the selection or categorization of data. The Children's Administration reserves the right to correct any errors or omissions found in this report.

### May 2008 updates can be found on:

pg 2 (stability measure revision #2)

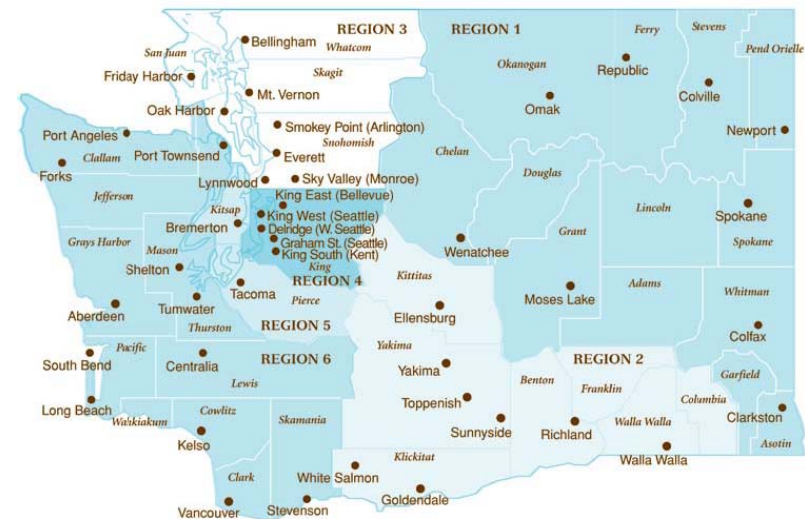
pg 3 (average caseload ratio)

pg 6 (FY07 EPSDT in 30 days)

pg 8 (FY07 EPSDT – annual)

pg 15 (FFY04-FFY06 Safety in Out-of-Home Care)

pg 16 (placeholder for school moves)



## STABILITY

Area/Goal/ Outcome/Benchmark	Measure Description	Regional Performance								
		FY	Measure	Region 1	Region 2	Region 3	Region 4	Region 5	Region 6	State
A.1.1.1 (p.10) The average monthly ratio of licensed foster care beds to children in licensed foster care	The total bed capacity <sup>1</sup> of licensed foster homes (month end average during FY) divided by the average monthly census of children in licensed family foster homes	FY05	Beds/Child	2.28	2.44	2.25	1.98	2.16	2.77	2.31
		FY06	Beds/Child	2.16	2.46	2.16	1.90	2.27	2.67	2.27
		FY07	Beds/Child	2.09	2.48	2.09	1.95	2.39	2.41	2.22

This ratio includes all children/youth living in licensed family foster homes, including youth in guardianships. Changes in these ratios over time reflect an interaction of three variables: the number of children who need licensed foster care, the number of licensed foster homes, and the licensed capacity of these homes. The number of children in out-of-home care has increased 16% since FY04 - 8,864 (FY04) to 10,268 (FY07) - with a sharp rise in the number of licensed foster home placements between FY06 and FY07 (7%). The supply of licensed foster homes grew about 3% between FY06 and FY07 - 5,761 (Jul05) to 5,938 (Jun07). It is important to note that appropriations of CA staff are not automatically adjusted when caseloads grow. Because this measure is based on the average monthly capacity of licensed homes during the fiscal year, it does not fully reflect the most recent progress that has been made due to the Regional Recruitment and Retention contracts.

The tables below display the ratio of licensed foster homes and licensed foster home beds to children and youth in licensed foster care at the end of July 2007, by age group and race/ethnicity:

**Licensed foster home capacity by child age:** Comparison of children in licensed foster homes by age group with licensed foster home and bed availability by age group. Foster homes can be licensed for any age range from 0 to 18. This age range applies to all beds in the home. Because homes and beds are counted more than once if homes are licensed to care for children in more than one age group, these ratios offer an inflated picture of the availability of homes and beds for children in each age category.

July07	Age <1		Age 2-5		Age 6-12		Age >12	
Region	homes	beds	homes	beds	homes	beds	homes	beds
1	3.4	7.8	2.9	6.9	2.2	5.4	2.2	5.8
2	4.0	10.8	3.1	8.5	2.6	7.1	2.1	6.0
3	3.7	8.5	2.7	6.1	2.4	5.7	1.8	4.4
4	3.5	7.4	2.9	6.3	2.3	5.6	1.4	3.5
5	3.3	7.8	3.0	7.3	3.4	8.6	2.1	5.6
6	4.7	10.7	3.1	7.4	3.0		1.8	4.7
<b>State Avg</b>	<b>3.7</b>	<b>8.7</b>	<b>3.0</b>	<b>7.0</b>	<b>2.6</b>	<b>7.3</b>	<b>1.9</b>	<b>4.9</b>

<sup>1</sup> Bed capacity of licensed foster homes represents the maximum licensed capacity of a home but may not represent limits self-imposed by foster parents.

Area/Goal/ Outcome/Benchmark	Measure Description	Regional Performance								
		FY	Measure	Region 1	Region 2	Region 3	Region 4	Region 5	Region 6	State
Informational Report (p 10) The one year retention rate for active foster homes	<b>The proportion of homes still active in the fiscal year and original region following the first year of licensed activity (with a license and a placement)</b>	FY05	1 yr retention	85%	90%	88%	86%	79%	83%	85%
		FY06	1 yr retention	87%	84%	86%	81%	86%	84%	84%
		FY07	1 yr retention	88%	88%	83%	87%	90%	81%	86%

One year regional retention rates reflect the proportion of licensed foster homes that continued to foster children after the first fiscal year in which the home provided care, in the originating region (caregivers who move across Regional boundaries are no longer counted as active in the originating region). State-wide retention rates show the proportion of homes that continued to offer foster care anywhere in the state after the first year of service. Variation in rates across regions may reflect differences in the proportion of homes that became licensed for a particular child (who may not have required ongoing foster care), homes that became licensed for foster child adoptions, caregivers that moved as well as homes that discontinued fostering for personal reasons.

Foster parents were recently surveyed by the Washington State University Social and Economic Sciences Research Center (SESRC) for the Children's Administration. Foster parents who had let their license expire were asked what the main reason was for letting the license expire. The main reasons given had to do with getting older, and having done foster parenting for a number of years, and/or adopting a child or children.

The Revised Braam Implementation Plan (7/08) moved foster home retention from an outcome to an informational report. (Note- Implementation Plan requests 1, 2, 3, 4 and 5 yr retention rates, which will be presented in the FY08 Performance Report)

Area/Goal/ Outcome/Benchmark	Measure Description	Regional Performance								
		FY	Measure	Region 1	Region 2	Region 3	Region 4	Region 5	Region 6	State
A.1.2 (p 10) The percentage of children who experience two or fewer placements during their current out-of-home episode of care [outcome measure based on percentage of youth entering care during the two previous fiscal years with 2 or fewer placements (with time-in-care specifications based on entry year)]	<b>The percent of placements with 2 or fewer placements (within 'grand' placement episodes), for children entering placement during the most recent 2 years, where length of stay for the most current placement year was 30-365 days and length of stay for next most recent placement year was 1-2 years.</b>	FY05	% unstable	92.4%	85.0%	85.9%	86.4%	83.2%	80.7%	85.5%
		FY06	% unstable	90.5%	82.7%	85.3%	84.1%	83.3%	81.9%	84.7%
		FY07	% unstable	89.5%	86.9%	83.4%	83.7%	84.4%	83.6%	85.5%

**UPDATED May 2008:** This measure was re-defined by the Braam Panel in 2008, requiring a re-evaluation of placement instability for FY05 through FY07 reports. The original measure evaluated the percent of children with more than 2 placement events based on out-of-placement entries during the most recent 5 year period. Figure 1 displays performance by fiscal year on the instability measure as previously reported:

**Figure 1 – Old Measure**

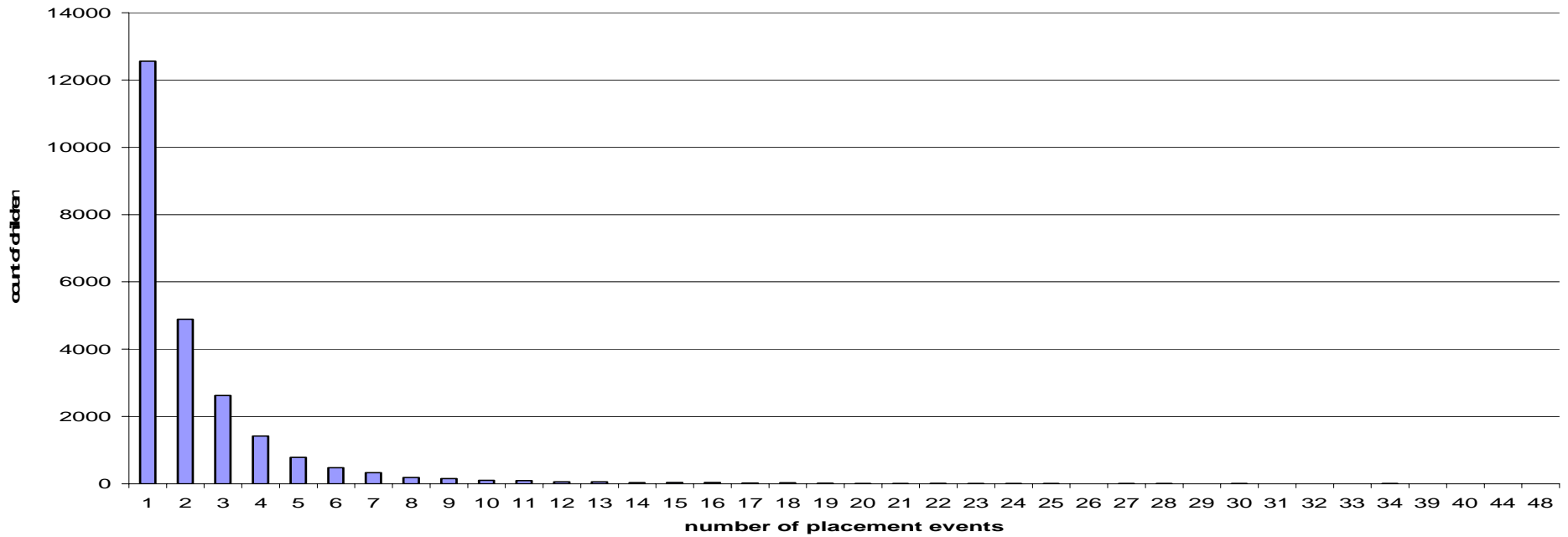
Fiscal Year	FY05	FY06	FY07
Actual	29.8%	28.4%	26.5%

Based on the new Braam measure of placement instability, 85.5% of the children and youth who entered placement between FY05 – FY06 have experienced no more than 1 move (1-2 placement events).

**Informational Reports Requested by Braam Panel:**

29.3% of the children placed between FY02 and FY04 experienced more than 1 move (more than 2 placement events) while in care. Over one-half (52%) of the children placed over the last 5 years (FY02-FY06) experienced no moves while in placement, while 20% experienced only 1 move and 11% experienced only 2 moves. 6% experienced only 3 moves and 10% of all placements involved more than 3 moves.

**Count of Children in Placement by Number of Placement Events:  
FY02 - FY06 Entry Cohorts**



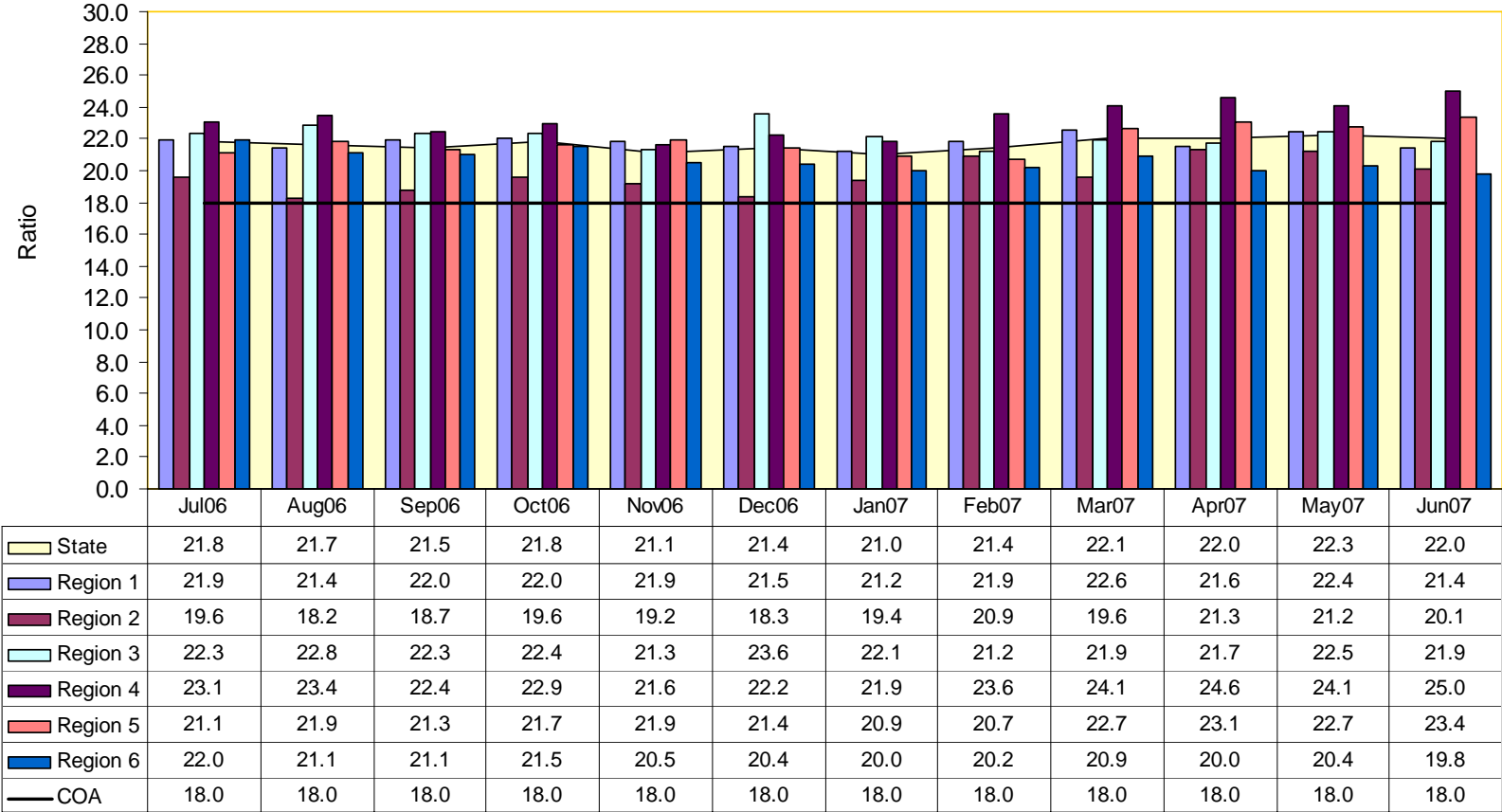
Area/Goal/ Outcome/Benchmark	Measure Description	Regional Performance
A.1.3 (p 11)	<p><b>Social workers will have caseloads at or below Council on Accreditation (COA) standards (8 child cases per caseworker for children with special needs, 18 child cases per caseworker for all other children) (outcome measure based on the percentage of caseworkers with caseloads at or below COA standards; for measurement purposes, each child with special needs will be counted as 2.25 children).</b> A new measure has not yet been constructed. The information below is presented as a substitute to the measure defined by the Braam Panel.</p>	

**UPDATED May 2008:** The caseload ratio (# active cases in all programs / # case carrying Social Workers in all programs) average for FY07 was 22.1 cases per worker. Counts for this ratio include Child Protection, Voluntary Family Services, Child Welfare and Family Reconciliation Services cases and staff. Cases assigned to workers in more than one program area are counted more than once.

Regional caseload ratio averages for FY07 ranged from 19.7 in Region 2 to 23.2 in Region 4:

FY	Measure	Region 1	Region 2	Region 3	Region 4	Region 5	Region 6	State
FY07	avg ratio	21.8	19.7	22.2	23.2	21.9	20.7	22.1

### FY07 Overall (All Programs) Caseload Ratio Trends



Area/Goal/ Outcome/Benchmark	Measure Description	Regional Performance
Informational Reports	The Panel requested the following informational reports	

**Percent of children placed with relatives:**

*Initial Placement Type (Placements Beginning FY07)*

Initial Placements FY07	Data	Region 1	Region 2	Region 3	Region 4	Region 5	Region 6	State
Relative	Percent	31.2%	34.7%	36.2%	37.9%	26.2%	26.4%	31.9%

*Placement Types (July 2007 Snapshot by Placement Location)*

Current Placement Jul07	Data	Region 1	Region 2	Region 3	Region 4	Region 5	Region 6	State
Relative	Percent	38.9%	40.0%	44.2%	38.0%	37.2%	31.5%	38.2%

**Percent of children placed with one or more siblings:**

FY	Measure	Region 1	Region 2	Region 3	Region 4	Region 5	Region 6	State
FY07	% some or all	75.5%	90.5%	82.0%	80.6%	66.4%	81.2%	79.3%

**Percent of children placed in a licensed foster home licensed for the child's age (Jul07 Foster Home Placements):**

Child Age Group	Region	1	2	3	4	5	6	Grand Total
Age <1 Year	% Licensed for Age	98.9%	98.9%	95.0%	96.7%	98.5%	98.0%	97.7%
Age 2 to 5 Years	% Licensed for Age	97.3%	98.8%	97.7%	95.8%	97.4%	99.0%	97.7%
Age 6 to 12 Years	% Licensed for Age	96.9%	97.7%	96.4%	96.8%	97.5%	97.6%	97.2%
Age 13 to 18 Years	% Licensed for Age	95.8%	97.5%	92.9%	95.9%	98.4%	97.8%	96.5%

**Percent of children placed in their home school district:** *data still under development*

**Percent of children with an emergency placement Family Team Decision Making Meeting, in offices served by Family to Family<sup>2</sup>:**

FTDM Reason	Data Description	STATE Total	Spokane	Richland	Yakima	Kent	OAACS	Tacoma	Vancouver	Kitsap	Region 3 (excludes Oak Harbor)
Emergency Placement	Children Eligible	1,190	194	91	67	66	55	266	156	69	226
	# With FTDM	343	86	33	20	22	3	41	31	23	84
	% With FTDM	28.8%	44.3%	36.3%	29.9%	33.3%	5.5%	15.4%	19.9%	33.3%	37.2%

**Percent of children who moved within 8 days of placement (2007 Placement Entries based on Braam Stability Measure data):**

FY	Data	Days to 1st Move				Grand Total
		0-8 days	9-30 days	>30 days	no move	
2007	count	1522	675	943	5542	8682
	percent	17.5%	7.8%	10.9%	63.8%	100.0%
Total count		1522	675	943	5542	8682
Total percent		17.5%	7.8%	10.9%	63.8%	100.0%

<sup>2</sup> 3rd Qtr 2007, includes optional (placements <4 days) and required (placements >3 days) meetings for emergency placements to be held within 72 hours of placement

## MENTAL HEALTH

Area/Goal/ Outcome/Benchmark	Measure Description	Regional Performance								
		FY	Measure	Region 1	Region 2	Region 3	Region 4	Region 5	Region 6	State
B.1.2 (p 13) Children in out-of-home care 30 days or longer with completed and documented Child Health and Education Track (CHET) screens within 30 days of entering care - Baseline (BSLN) FY05	<b>The percent all of children placed during the fiscal year who required a Child Health and Education Tracking (CHET) screening, with a completed screening within 30 days of entering care.</b> Source: Kidscreen database	FY05	% completed	27.9%	52.0%	6.9%	31.6%	9.3%	11.9%	21.8%
		FY06	% completed	16.1%	43.2%	27.4%	15.8%	46.8%	34.3%	29.5%
		FY07	% completed	40.0%	49.2%	55.8%	43.0%	49.0%	47.0%	47.0%

These data are not based on the Panel's re-definition of a completed CHET, as described in the revised Implementation plan. It is not possible to recalculate the time to CHET completion for past years based on the new definition. Compliance on this outcome, based on the new definition of a completed CHET, can be calculated only for completions after the Panel's new definition was implemented in CA policy.

Performance on this measure cannot be compared across fiscal years (FY). FY07 rates reflect a change in the policy concerning when CHET screenings are considered complete. The CHET staffing, while still a requirement, is no longer required for the screening to be considered complete. A complete CHET screening is now one where the written screening report is done using all the information available to the screener within 30 days of placement, given that required efforts have been made, per policy. Children eligible for CHET screening include all placements lasting at least 30 days with no exceptions for children unavailable due to running, children who changed legal custody, children who moved out-of-state, youth in Juvenile Rehabilitation and Detention, youth who aged out of care or children who had a valid assessment from another source.

CHET screening is performed by a limited number of specialized staff. The number and timeliness of CHET screens generally reflects the capacity to complete the screening process given the number of screeners and children required to be screened. The population reflected in this measure – placements requiring CHET screening - increased by 6.6% from FY05 to FY07, from 4,593 (FY05) to 4,897 (FY07) while the number of completed CHET screens increased by 13% (3,558 FY05 to 4,019 FY07). It is important to note that appropriations of CA staff are not automatically adjusted when caseloads grow.

66% of eligible children received CHET screenings within 45 days of placement, while 73% were screened within 60 days and 79% were screened within 90 days of placement<sup>3</sup>. Approximately 82% of all eligible children were screened in FY07, up from 77% in FY05<sup>4</sup>.

	Eligible Placements	CHET Completed in 30 Days	CHET Completed in 45 Days	CHET Completed in 60 Days	CHET Completed in 75 Days	CHET Completed in 90 Days	CHETS Completed
<b>FY07</b>	4897 (100%)	2301 (47%)	3210 (66%)	3568 (73%)	3743 (76%)	3881 (79%)	4019 (82%)

<sup>3</sup> CHET results are incorporated into the initial Individual Service and Safety Plan (ISSP), which is to be completed no later than 60 days from placement.

<sup>4</sup> Approximately 90% of eligible children are currently receiving CHET screens (6/07 – 8/07). The average completion time is now 31.7 days.

Area/Goal/ Outcome/Benchmark	Measure Description	Regional Performance								
		FY	Measure	Region 1	Region 2	Region 3	Region 4	Region 5	Region 6	State
B.3.1 (p 16) Children in out-of-home care will receive a comprehensive mental health assessment within 30 days of a request for an assessment.	<b>The percent of children in out-of-home placement during each fiscal year who received non-crisis mental health services within 30 days of a request for mental health assessment.</b> Source: HRSA RSN provider records	FY05	% compliant	na	na	na	na	na	na	na
		FY06	% compliant	na	na	na	na	na	na	na
			% compliant	86.4%	68.8%	91.7%	81.4%	73.6%	86.0%	80.3%

Administrative data for this measure was not available until a change was made in RSN contracts that required the documentation of a request for service (a request for any service), due to earlier work with the Braam Panel. Data is now available beginning January 2007.

Area/Goal/ Outcome/Benchmark	Measure Description	Regional Performance								
		FY	Measure	Region 1	Region 2	Region 3	Region 4	Region 5	Region 6	State
B.3.2 (p 16) Children in out-of-home care will be screened for mental health and substance abuse needs every 12 months- Baseline (BSLN) FY05	<b>The percent of children in episodes open at least one year with one or more recorded EPSDT screening within the last 365 days.</b> Source: (FY06) HRSA claims and encounter records	FY05	% completed	3.6%	2.3%	2.6%	1.8%	2.7%	2.1%	2.4 <sup>5</sup> %
		FY06	% completed	46.6%	38.9%	37.6%	41.0%	50.4%	46.8%	43.9% <sup>6</sup>
		FY07	% completed	59.7%	53.7%	55.3%	55.6%	57.7%	56.0%	56.5%

**Updated May 2008:** Performance on this measure can be compared across fiscal years 2006 and 2007 only. FY05 performance is based on EPSDT screening dates recorded in CAMIS. For FY06 and FY07, performance is based on provider claims (billing) and encounter records submitted by providers. CHET screeners typically record the initial EPSDT screening date and the assigned Social Worker is responsible for recording all subsequent screening dates in CAMIS. FY05 performance reflects the finding that most children in placement only have the EPSDT date that was recorded by the CHET screener.

For FY06 and FY07, performance is based on HRSA claims (billing) and encounter records submitted by providers. Provider claims and encounter records are considered the best source of documentation about EPSDT screening and will be used for subsequent reports. Claims and encounter data are not available for FY05 and were not available for FY07 until Spring of 2008.

Other types of mental health screening activities are not by captured this measure (e.g. ongoing/periodic screening provided by a mental health provider - Medicaid fee for service provides up to 12 sessions with a Psychiatrist each calendar year).

<sup>5</sup> Based on information recorded in CAMIS

<sup>6</sup> Based on billing and encounter data matched to foster youth in care during FY06

Area/Goal/ Outcome/Benchmark	Measure Description	Regional Performance								
		FY	Measure	Region 1	Region 2	Region 3	Region 4	Region 5	Region 6	State
B.3.3 (p16) Eligible children will receive services from a qualified mental health and/or substance abuse provider within 30 days of the completion of an assessment.	<b>The percent of children in out-of-home placement during each fiscal year who received non-crisis mental health services within 30 days of a mental health assessment.</b> Source: HRSA RSN provider records	<b>FY05</b>	% compliant	82.1%	71.9%	80.0%	88.2%	82.4%	72.9%	80.0%
		<b>FY06</b>	% compliant	82.7%	49.6%	80.7%	84.9%	77.6%	79.9%	77.3%
		<b>FY07</b>	% compliant	80.0%	73.4%	78.5%	77.3%	84.5%	82.6%	80.0%

Performance on this measure cannot be compared across fiscal years (FY). Performance reported for FY05 and FY06 was based on the number of children in out-of-home placement who had mental health assessments during the fiscal year and no prior record of mental health services, to exclude those children and youth who were being re-assessed.

Based on Braam Panel feedback, FY07 performance is based on all children in out-of-home placement during FY07 who had an assessment during the fiscal year.

## FOSTER PARENT TRAINING AND INFORMATION

Area/Goal/ Outcome/Benchmark	Measure Description	Regional Performance								
		FY	Measure	Region 1	Region 2	Region 3	Region 4	Region 5	Region 6	State
Informational Report (p 23) Percentage of licensed caregivers who meet the in-service training requirement at the time of license renewal (36 hours of in-service training for the three-year period or, during the phase-in period for this policy, a pro-rated requirement)	<b>The percent of family foster homes with primary caregivers who completed the required number of in-service training hours prior to license renewal on or after March 2005<sup>7</sup>.</b>	<b>FY05</b>	% compliant	na	na	na	na	na	na	na
		<b>FY06</b>	% compliant	35.6%	16.7%	30.4%	15.3%	44.3%	52.1%	33.2%
		<b>FY07</b>	% compliant	39.1%	23.1%	32.4%	10.6%	41.9%	34.9%	31.9%

<sup>7</sup> All renewals within the first 6 months of the new training policy were exempt from the in-service training requirement and were excluded from this evaluation of performance. All renewals in FY05 were exempt from the training policy requirement.

Compliance on this benchmark is based on renewals of foster home licenses during each fiscal year where the required number of in-service training hours have been documented for the primary caregiver on the license. Homes with renewed licenses that were exempt from the in-service training requirement because their renewal date fell within 6 months of the policy implementation date are excluded from this analysis.

The Administration's current data on trainings completed by licensed foster parents is not considered complete and accurate. Significant gaps exist in the process of collecting training information from foster parents. Data coding irregularities make the precise identification of in-service training hours difficult.

76% of licensed foster parents recently interviewed by the Washington State University Social and Economic Sciences Research Center reported more than 8 hours of training during FY 2006 (Q28), while 72% reported more than 24 hours of training during the last three years (Q29).

### UNSAFE OR INAPPROPRIATE PLACEMENTS

Area/Goal/ Outcome/Benchmark	Measure Description	Regional Performance								
D.1.1 (p 25) Children will not be placed in institutions not designed for placement of foster children, such as adult mental hospitals or detoxification facilities, where children and adults are commingled.	<b>The number of youth with stays in adult or mixed age mental health facilities during the fiscal year, based on Mental Health Division reports.</b> Source: MHD Report	FY	Measure	Region 1	Region 2	Region 3	Region 4	Region 5	Region 6	State
		FY05	number							13
		FY06	number							7
		FY07	number							0

Area/Goal/ Outcome/Benchmark	Measure Description	Regional Performance								
D.1.2 (p 25) Children will not stay overnight at DSHS offices or in apartments or hotels	<b>The number of youth with stays in hotels, motels, apartments or offices, based on documentation in Administrative Incident Reporting System (AIRS).</b> Source: AIRS report	FY	Measure	Region 1	Region 2	Region 3	Region 4	Region 5	Region 6	State
		FY05	number	na	na	na	na	na	na	na
		FY06	number	na	na	na	na	na	na	na
		FY07	number	0	0	2	0	1	0	3

Three 13 year old youth, 2 with an overnight stay in a hotel with a CA staff person, one with an emergency stay in a hospital emergency room triage bed while the Mental Health Professional located a bed for her. No youth had an overnight stay in an office. All placements were reviewed and approved by management and had safeguards in place in compliance with CA policy.

Area/Goal/ Outcome/Benchmark	Measure Description	Regional Performance
D.2.1 (p 28) The percentage of children who are not victims of a founded report of child abuse or neglect by a foster parent or facility staff member will meet or exceed the federal Child and Family Services Review (round 2) standard.	<b>Summary reports of DLR Investigations: 1) characteristics of the alleged victimization, 2) outcomes of the investigation.</b> Performance data related to the thoroughness and quality of DLR investigations will be developed from case Review and reported at a later date. The additional information related to DLR investigations is presented as requested by the Braam Panel.	

These descriptive reports cannot be compared to data in prior performance reports because the sample population has changed each year. DLR investigative assessments completed between 7/1/2006 and 6/30/2007 (FY07) were selected for this measure, based on input from the Braam Panel. 519 DLR investigations were completed during this time period involving 659 alleged victims of maltreatment by a foster parent or a staff person where the alleged victim was in out-of-home care when the DLR referral was received. It should be noted that investigative assessments can be linked to more than one referral, and each referral can involve multiple alleged victims.

**Victim Characteristics (unduplicated):**

RACE							
Data	Cauc	Afr Amer	Nat Amer	Multi	Asian/Pac Isl	Other	Grand Total
count	59.5%	14.6%	12.7%	8.5%	0.3%	4.4%	100.0%
percent	392	96	84	56	2	29	659

HISPANIC			
Data	Yes	No	Grand Total
count	14.4%	85.6%	100.0%
percent	95	564	659

GENDER			
Data	Female	Male	Grand Total
count	44.8%	55.2%	100.0%
percent	295	364	659

**Victim Count by Region (duplicate count due to children reported in more than one region):**

Victims	REGION						Grand Total
	1	2	3	4	5	6	
Total	79	67	95	80	151	199	671

**Victim Location (duplicate count due to victims in multiple referrals in multiple locations linked to an investigative assessment):**

Placement Location at Time of Referral						
Data	Licensed Foster Home	Group Home	Relative/Birth/Adopt Parent	CRC/Regional Assmnt	Other	Grand Total
count	656	44	36	14	28	778
percent	84.3%	5.7%	4.6%	1.8%	3.6%	100.0%

**Victims by Investigative Findings (duplicate counts):**

FINDING				
Data	(1) Founded	(2) Inconclusive	(3) Unfounded	Grand Total
count	42	102	634	778
percent	5.4%	13.1%	81.5%	100.0%

**Victims by Findings and Alleged Perpetrator Type:**

Alleged Perpetrator	Data	FINDING			Grand Total
		(1) Founded	(2) Inconclusive	(3) Unfounded	
Foster Parent Perpetrator	count	38	91	597	726
	percent	5.2%	12.5%	82.2%	100.0%
Staff Perpetrator	count	4	11	37	52
	percent	7.7%	21.2%	71.2%	100.0%
Total count		42	102	634	778
Total percent		5.4%	13.1%	81.5%	100.0%

**Investigations by Findings:**

	Any Allegations Founded?		
	Yes	No	Grand Total
count	27	492	519
percent	5.2%	94.8%	100.0%

**Investigations by Findings and Perpetrator:**

Alleged Perpetrator	Data	Anyfounded		Grand Total
		Yes	No	
Foster Parent	count	24	455	479
	percent	5.0%	95.0%	100.0%
Staff	count	3	37	40
	percent	7.5%	92.5%	100.0%
Total count		27	492	519
Total percent		5.2%	94.8%	100.0%

**Timeliness of Completed Investigations (Referral Receipt to Supervisory Approval):**

Data	Time to Investigative Assessment Completion				Grand Total
	<=90 days	91-120 days	121-180 days	>180 days	
count	259	95	88	77	519
percent	49.9%	18.3%	17.0%	14.8%	100.0%

Area/Goal/ Outcome/ Benchmark	Benchmark Description	Measure Description	Performance			
			Fiscal Year	FFY04	FFY05	FFY06
D.2.1 (p 28)	The percentage of children who are not victims of a founded report of child abuse or neglect by a foster parent or facility staff member will meet or exceed the federal Child and Family Services Review (round 2) standard	The percentage of children who are not victims of a founded report of child abuse or neglect by a foster parent or facility staff member. Source: National Child Abuse and Neglect Reporting System (NCANDS)	<b>Actual</b>	99.64%	99.73%	99.57%
			<b>Standard</b>	99.68%	99.68%	99.68%

**UPDATED May 2008:** Performance for federal fiscal year 2007 (FFY07) is expected sometime during the summer of 2008. Region level data is not available.

## SIBLING SEPARATION

Area/Goal/ Outcome/Benchmark	Measure Description	Regional Performance								
		FY	Measure	Region 1	Region 2	Region 3	Region 4	Region 5	Region 6	State
E.1.1 (p 30) The percentage of children in the class placed <u>with all siblings</u> , for children placed in regular licensed relative and non-relative foster care	<b>The proportion of children placed in regular foster care during each fiscal year who were placed <u>with all other removed siblings</u>.</b>	FY05	% all	57.9%	65.0%	54.9%	62.1%	54.0%	63.5%	59.6%
		FY06	% all	57.0%	68.1%	58.1%	61.4%	46.5%	62.2%	58.9%
		FY07	% all	55.4%	68.2%	59.1%	60.2%	46.0%	61.1%	58.3%
E.1.2 (p 30) The percentage of children in the class placed <u>with at least one sibling</u> , for children placed in regular licensed relative and non-relative foster care	<b>The proportion of children placed in regular foster care during each fiscal year who were placed <u>with some other removed siblings</u>.</b>	FY05	% some or all	78.4%	90.1%	79.0%	79.8%	77.6%	86.6%	82.1%
		FY06	% some or all	76.6%	90.5%	82.1%	82.4%	68.1%	81.6%	80.1%
		FY07	% some or all	75.5%	90.5%	82.0%	80.6%	66.4%	81.2%	79.3%

This measure looks at the first regular foster care placement for children who were removed with other siblings within 7 days of each other and all placed into a foster home (licensed or unlicensed). Sibling groups are more likely to remain together when placed with relatives compared to placements with unrelated licensed caregivers. Children captured in this measure include those who cannot be placed together due to behavioral concerns or other special needs, and those who have been removed with half or step-siblings (mixed families where children might be separated to accommodate placement with relatives).

Children who are removed with only one other sibling have a 74% chance of being placed together with unrelated caregivers and a 90% chance if placed with relatives. Sibling groups of more than 2 have about a 27% chance of all being together with unrelated caregivers and a 62% chance of all being placed together with a relative.

Performance changes between FY05 and FY07 appear to be confined to sibling groups who are placed initially into unrelated foster homes. The proportion of siblings placed into unrelated foster homes with some or all other siblings fell from 76% to 71%, while the percent of siblings placed with relatives who remained with some or all other removed siblings has remained steady at about 90%.

The demand for licensed foster homes increased faster than the supply during the last fiscal year, reducing the availability of licensed foster homes with multiple vacant beds that can accommodate sibling groups.

**SERVICES TO ADOLESCENTS**

Area/Goal/ Outcome/Benchmark	Measure Description	Regional Performance								
		FY	Measure	Region 1	Region 2	Region 3	Region 4	Region 5	Region 6	State
F.2.1 (p 34)	The percentage of children (excluding those placed with relatives and/or siblings) who enter out-of-home care or change placement during the school year who do not experience a change in school placement.	FY07	% without	na	na	na	na	na	na	na
		<p><b>UPDATED May 2008:</b> Data from OSPI that can be linked with CA placement data is not yet available.</p> <p><b>September 2008 Update:</b> OSPI data for school year 2006-2007 was received on 9/2/08. Unfortunately these data were found to be corrupt and OSPI is in the process of obtaining uncorrupted back-up copies of their data.</p>								
F.3.1 (p36)	The proportion of children in a placement episode open during the fiscal year with at least one runaway event beginning during each fiscal year.	FY	Measure	Region 1	Region 2	Region 3	Region 4	Region 5	Region 6	State
		FY05	% with run	1.8%	3.9%	3.4%	6.7%	4.0%	3.4%	4.0%
		FY06	% with run	2.3%	3.6%	3.8%	7.2%	4.3%	3.0%	4.1%
		FY07	% with run	2.4%	4.0%	3.7%	6.5%	4.1%	4.0%	4.1%

The number of youth in a placement open during the fiscal year - increased by 6% between FY05 and FY07. The number of youth in an open placement at the end of the FY - increased by 10% between FY05 and FY07.

Area/Goal/ Outcome/Benchmark	Measure Description	Regional Performance								
		FY	Measure	Region 1	Region 2	Region 3	Region 4	Region 5	Region 6	State
Informational Report (p 36) Percentage of children in care who have run away multiple times during the fiscal year, disaggregated by the number of running events	<b>The percent of children in an open placement episode on the last day of each Fiscal Year with at least two runaway events in their current episode.</b>	<b>FY05</b>	% with >1 run	1.5%	4.3%	2.6%	5.9%	4.7%	3.3%	3.8%
		<b>FY06</b>	% with >1 run	2.4%	4.0%	2.8%	6.4%	4.8%	3.0%	3.9%
		<b>FY07</b>	% with >1 run	2.4%	3.7%	3.0%	6.5%	5.4%	3.7%	4.1%

The number of youth included in this measure – youth in open placement at the end of the FY - increased by 10% between FY05 and FY07.

Area/Goal/ Outcome/Benchmark	Measure Description	Regional Performance								
		FY	Measure	Region 1	Region 2	Region 3	Region 4	Region 5	Region 6	State
Informational Report (p 36) The mean number of days for children who run from out-of-home care placements during their current episode in out-of-home care - Baseline (BSLN) FY05	<b>The mean days in a running event for all children in an open placement episode on the last day of each fiscal year and with at least one runaway event in their current episode.</b>	<b>FY05</b>	mean days	116	120	97	135	163	95	126
		<b>FY06</b>	mean days	116	80	74	162	158	101	126
		<b>FY07</b>	mean days	121	97	92	160	143	87	123
F.3.2 (p 36) The median number of days for children who run from out-of-home care placements during their current episode in out-of-home care - Baseline (BSLN) FY05	<b>The median days in a running event for all children in an open placement episode on the last day of each fiscal year and with at least one runaway event in their current episode.</b>	<b>FY05</b>	median days	53	58	47	36	54	29	43
		<b>FY06</b>	median days	40	32	33	59	46	33	42
		<b>FY07</b>	median days	50	31	34	50	60	25	39

The number of youth included in this measure – youth with a run during their current placement episode - increased by 14% between FY05 and FY07.

Appendix

**A.1.1:** The total bed capacity of licensed foster homes (month end average during FY) divided by the average monthly census of children in licensed family foster homes.

	Region 1	Region 2	Region 3	Region 4	Region 5	Region 6	State
<b>FY05</b>	2059/904	1800/738	1868/830	2299/1162	2280/1056	3261/1179	13566/5869
<b>FY06</b>	2113/978	1798/730	1889/874	2146/1127	2251/994	3138/1175	13334/5878
<b>FY07</b>	2182/1046	1825/736	2017/963	2119/1087	2306/965	2993/1244	13440/6042

**Licensed foster home capacity by child age:** The ratio of licensed foster homes and licensed bed capacity to children in licensed foster care at the end of July 2007, by age group (dup counts across age groups)

July07	<1		Age 2-5		Age 6-12		Age >12	
	Homes	Beds	Homes	Beds	Homes	Beds	Homes	Beds
<b>Region 1</b>	599/177	1383/177	781/265	1827/265	757/351	1903/351	498/230	1336/230
<b>Region 2</b>	380/96	1040/96	535/171	1458/171	601/231	1639/231	482/225	1360/225
<b>Region 3</b>	502/136	1160/136	702/263	1613/263	756/314	1789/314	507/279	1228/279
<b>Region 4</b>	473/136	1011/136	632/218	1372/218	720/308	1714/308	539/380	1322/380
<b>Region 5</b>	528/158	1232/158	737/244	1779/244	852/251	2147/251	660/310	1732/310
<b>Region 6</b>	735/157	1687/157	965/307	2257/307	1041/349	2555/349	699/385	1798/385
<b>State</b>	3217/860	7513/860	4352/1468	10306/1468	4727/1804	11747/1804	3385/1809	8776/1809

**Licensed foster home capacity by race:** The ratio of licensed foster homes and licensed bed capacity to children in licensed foster care at the end of July 2007, by race (dup counts across race groups)

July07	Any Caucasian		Any African American		Any Native American		Any Asian/PI		Any Other Race		Any Hispanic	
	Homes	Beds	Homes	Beds	Homes	Beds	Homes	Beds	Homes	Beds	Homes	Beds
<b>Region 1</b>	938/805	2111/805	29/81	74/81	67/148	185/148	11/7	18/7	67/62	127/62	73/155	178/155
<b>Region 2</b>	591/543	1487/543	22/47	46/47	46/150	161/150	6/7	17/7	100/37	259/37	146/250	377/250
<b>Region 3</b>	740/777	1659/777	28/110	55/110	37/130	96/130	29/16	60/16	33/9	22/9	44/108	106/108
<b>Region 4</b>	677/542	1427/542	229/419	555/419	32/164	73/164	38/51	88/51	54/50	122/50	55/141	134/141
<b>Region 5</b>	801/721	1854/721	191/223	469/223	61/111	152/111	44/40	114/40	54/8	120/8	79/105	187/105
<b>Region 6</b>	1204/997	2752/997	53/76	117/76	71/157	151/157	33/20	72/20	40/55	95/55	71/201	176/201
<b>State</b>	4951/4385	11290/4385	552/966	1316/966	303/860	818/860	161/141	369/141	310/245	745/245	468/960	1158/960

## Appendix

**A.1.2:** The proportion of placements with more than 2 placement events to all placements, for children entering placement during a 2 year period. *(Note: in the Revised Implementation Plan, this measure was changed to show the proportion of placements with 2 or fewer placements, thus reversing the measure. In future reports, trends will be shown using the new definition.)*

	Region 1	Region 2	Region 3	Region 4	Region 5	Region 6	State
<b>FY05</b>	61/583	43/327	64/386	64/393	51/326	87/530	370/2545
<b>FY06</b>	45/476	52/301	52/353	61/383	59/354	113/645	382/2492
<b>FY07</b>	32/422	44/294	41/290	58/426	55/328	105/545	335/2305

**B.1.2:** The proportion all of children needing CHET screening with completed Child Health and Education Tracking (CHET) screens within 30 days of entering care.

	Region 1	Region 2	Region 3	Region 4	Region 5	Region 6	State
<b>FY05</b>	224/802	309/594	53/771	231/730	70/751	112/945	999/4593
<b>FY06</b>	139/856	222/514	232/847	120/761	327/698	337/982	1377/4668
<b>FY07</b>	375/937	295/600	440/788	353/821	361/737	477/1014	2301/4897

**B.1.2:** The proportion of all children placed in FY06 and in out-of-home care and CA custody for at least 30 days, with EPSDT completion dates within 30 days of entering care.

	Region 1	Region 2	Region 3	Region 4	Region 5	Region 6	State
<b>FY05</b>	427/864	277/628	169/793	289/792	235/799	361/1059	1758/4935
<b>FY06</b>	380/976	196/572	373/919	207/854	350/791	461/1155	1967/5267
<b>FY07</b>	400/958	276/618	407/833	263/830	295/703	465/1034	2106/4976

**B.3.1:** The proportion of children in out-of-home placement during each fiscal year with mental health assessments, who received non-crisis mental health services within 30 days of a request for a mental health assessment.

	Region 1	Region 2	Region 3	Region 4	Region 5	Region 6	State
<b>FY05</b>	na	na	na	na	na	na	na
<b>FY06</b>	na	na	na	na	na	na	na
<b>FY07</b>	19/22	33/48	22/24	48/59	78/106	117/136	317/395

**B.3.2:** The proportion of children in placements open at least one year with one or more recorded EPSDT screening within the last 365 days.

	Region 1	Region 2	Region 3	Region 4	Region 5	Region 6	State
<b>FY05</b>	-	-	-	-	-	-	-
<b>FY06</b>	276/592	137/352	250/665	243/592	295/585	358/765	1559/3551
<b>FY07</b>	246/412	144/268	249/450	234/421	244/423	277/495	1394/2469

## Appendix

**B.3.3:** The proportion of children in out-of-home placement during each fiscal year with mental health assessments, who received non-crisis mental health services within 30 days of a mental health assessment.

	Region 1	Region 2	Region 3	Region 4	Region 5	Region 6	State
<b>FY05</b>	115/140	82/114	196/245	166/186	70/85	132/181	761/951
<b>FY06</b>	129/156	60/121	138/171	146/172	59/76	175/219	707/915
<b>FY07</b>	152/190	102/139	172/219	187/242	186/220	284/344	1083/1354

**C: Informational Report:** The proportion of family foster homes with primary caregivers who completed the required number of in-service training hours prior to license renewal.

	Region 1	Region 2	Region 3	Region 4	Region 5	Region 6	State
<b>FY05</b>	-	-	-	-	-	-	-
<b>FY06</b>	37/104	12/72	14/46	13/85	31/70	50/96	157/473
<b>FY07</b>	25/64	12/52	12/37	5/47	31/74	29/83	114/357

**E.1.1:** The percent of children placed with all other removed siblings.

	Region 1	Region 2	Region 3	Region 4	Region 5	Region 6	State
<b>FY05</b>	231/399	210/323	191/348	169/272	183/339	289/455	1273/2136
<b>FY06</b>	219/384	186/273	247/425	178/290	144/310	314/505	1288/2187
<b>FY07</b>	235/424	208/305	276/467	189/314	160/348	350/573	1418/2431

**E.1.2:** The percent of children placed with some or all other removed siblings.

	Region 1	Region 2	Region 3	Region 4	Region 5	Region 6	State
<b>FY05</b>	313/399	291/323	275/348	217/272	263/339	394/455	1753/2136
<b>FY06</b>	294/384	247/273	349/425	239/290	211/310	412/505	1752/2187
<b>FY07</b>	320/424	276/305	383/467	253/314	231/348	465/573	1928/2431

**F.3.1:** The proportion of children with at least one run event during the year.

	Region 1	Region 2	Region 3	Region 4	Region 5	Region 6	State
<b>FY05</b>	43/2387	76/1946	84/2483	199/2954	121/3010	110/3204	633/15984
<b>FY06</b>	57/2516	71/1959	106/2769	206/2862	125/2926	101/3388	666/16420
<b>FY07</b>	67/2791	80/1982	107/2920	196/3000	115/2775	137/3468	702/16936

## Appendix

**Informational Report:** The proportion of children with at least one run event during their current placement.

	<b>Region 1</b>	<b>Region 2</b>	<b>Region 3</b>	<b>Region 4</b>	<b>Region 5</b>	<b>Region 6</b>	<b>State</b>
<b>FY05</b>	41/1301	74/1109	80/1683	180/1851	124/1627	98/1746	597/9317
<b>FY06</b>	48/1475	64/1058	108/1897	211/1942	118/1555	93/1875	642/9802
<b>FY07</b>	55/1606	75/1105	102/2016	200/1961	121/1584	126/1970	679/10242

---

**Informational Report:** The proportion of children with more than one run event during their current placement.

	<b>Region 1</b>	<b>Region 2</b>	<b>Region 3</b>	<b>Region 4</b>	<b>Region 5</b>	<b>Region 6</b>	<b>State</b>
<b>FY05</b>	19/1301	48/1109	44/1683	109/1851	77/1627	57/1746	354/9317
<b>FY06</b>	35/1475	42/1058	54/1897	125/1942	74/1555	57/1875	387/9802
<b>FY07</b>	38/1606	41/1105	61/2016	128/1961	85/1584	72/1970	425/10242

---