

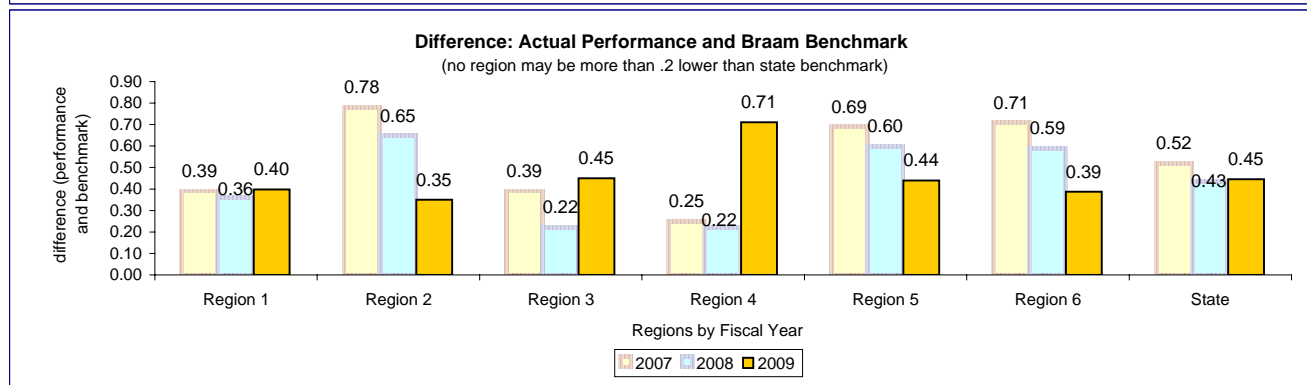
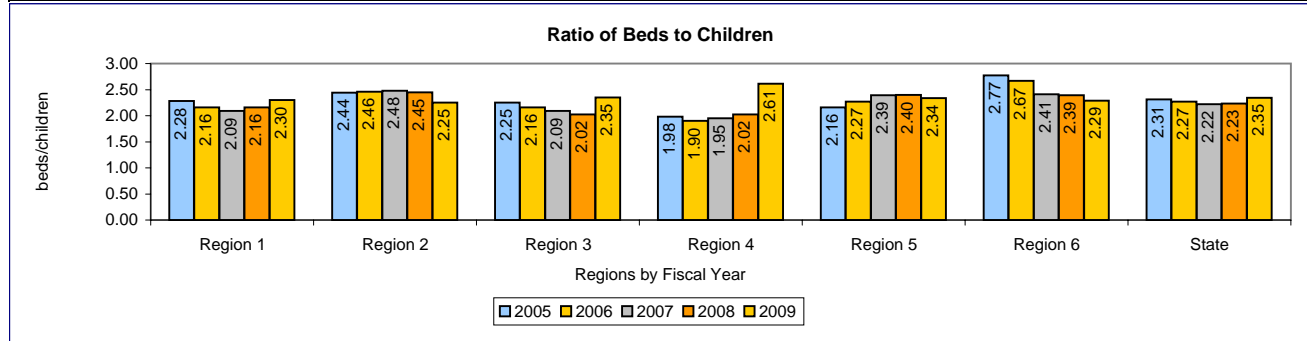
APPENDIX I
Monitoring Report #8—March 2010

Children's Administration FY09 Performance Report

Report FY	Measure	Region 1	Region 2	Region 3	Region 4	Region 5	Region 6	State	
2005	Actual Performance	beds/child	2.28	2.44	2.25	1.98	2.16	2.77	2.31
	Baseline		0.0%	0.0%	0.0%	0.0%	0.0%	0.0%	0.0%
	Actual % Change from Prior Yr		0.0%	0.0%	0.0%	0.0%	0.0%	0.0%	0.0%
	Difference (actual - benchmark)		na	na	na	na	na	na	na
2006	Actual Performance	beds/child	2.16	2.46	2.16	1.90	2.27	2.67	2.27
	Baseline		0.0%	0.0%	0.0%	0.0%	0.0%	0.0%	0.0%
	Actual % Change from Prior Yr		-5.3%	0.8%	-4.0%	-4.0%	5.1%	-3.6%	-1.7%
	Difference (actual - benchmark)		0.00	0.00	0.00	0.00	0.00	0.00	0.00
2007	Actual Performance	beds/child	2.09	2.48	2.09	1.95	2.39	2.41	2.22
	Benchmark		1.70	1.70	1.70	1.70	1.70	1.70	1.70
	Actual % Change from Prior Yr		-3.2%	0.8%	-3.2%	2.6%	5.3%	-9.7%	-2.2%
	Difference (actual - benchmark)		0.39	0.78	0.39	0.25	0.69	0.71	0.52
2008	Actual Performance	beds/child	2.16	2.45	2.02	2.02	2.40	2.39	2.23
	Benchmark		1.80	1.80	1.80	1.80	1.80	1.80	1.80
	Actual % Change from Prior Yr		3.3%	-1.3%	-3.2%	3.7%	0.4%	-0.8%	0.6%
	Difference (actual - benchmark)		0.36	0.65	0.22	0.22	0.60	0.59	0.43
2009	Actual Performance	beds/child	2.30	2.25	2.35	2.61	2.34	2.29	2.35
	Benchmark		1.90	1.90	1.90	1.90	1.90	1.90	1.90
	Actual % Change from Prior Yr		6.5%	-8.1%	16.2%	29.1%	-2.5%	-4.3%	5.0%
	Difference (actual - benchmark)		0.40	0.35	0.45	0.71	0.44	0.39	0.45

Measure Description:
 Source: Famlink provider and placement records. Monthly average over FY: count of bed capacity for all homes with a valid WA foster home license divided by count of children in a licensed foster home bed on the last day of each month.

 The Children's Administration has met the benchmark since 2005.



Stability

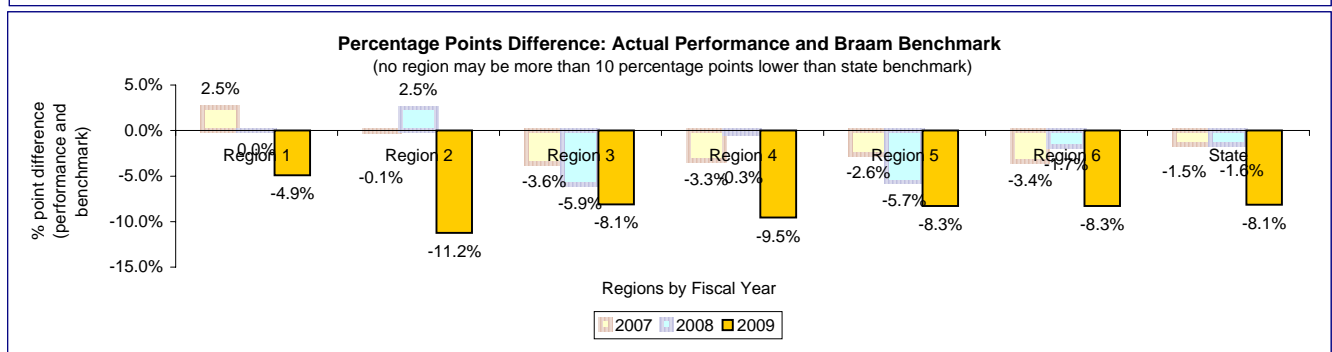
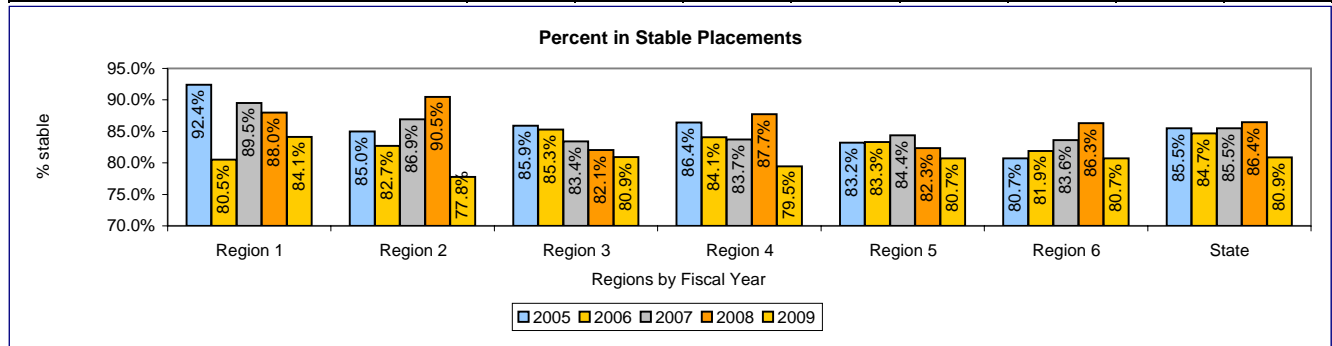
Report FY	Measure	Region 1	Region 2	Region 3	Region 4	Region 5	Region 6	State	
2005	Actual Performance	% stable	92.4%	85.0%	85.9%	86.4%	83.2%	80.7%	85.5%
	Baseline		0.0%	0.0%	0.0%	0.0%	0.0%	0.0%	0.0%
	Actual % Change from Prior Yr		0.0%	0.0%	0.0%	0.0%	0.0%	0.0%	0.0%
% Point Difference (actual - benchmark)			na	na	na	na	na	na	na
2006	Actual Performance	% stable	80.5%	82.7%	85.3%	84.1%	83.3%	81.9%	84.7%
	Baseline		0.0%	0.0%	0.0%	0.0%	0.0%	0.0%	0.0%
	Actual % Change from Prior Yr		-12.9%	-2.7%	-0.7%	-2.7%	0.1%	1.5%	-0.9%
% Point Difference (actual - benchmark)			0.0%	0.0%	0.0%	0.0%	0.0%	0.0%	0.0%
2007	Actual Performance	% stable	89.5%	86.9%	83.4%	83.7%	84.4%	83.6%	85.5%
	Benchmark		87.0%	87.0%	87.0%	87.0%	87.0%	87.0%	87.0%
	Actual % Change from Prior Yr		11.2%	5.1%	-2.2%	-0.5%	1.3%	2.1%	0.9%
% Point Difference (actual - benchmark)			2.5%	-0.1%	-3.6%	-3.3%	-2.6%	-3.4%	-1.5%
2008	Actual Performance	% stable	88.0%	90.5%	82.1%	87.7%	82.3%	86.3%	86.4%
	Benchmark		88.0%	88.0%	88.0%	88.0%	88.0%	88.0%	88.0%
	Actual % Change from Prior Yr		-1.7%	4.1%	-1.6%	4.8%	-2.4%	3.2%	1.1%
% Point Difference (actual - benchmark)			0.0%	2.5%	-5.9%	-0.3%	-5.7%	-1.7%	-1.6%
2009	Actual Performance	% stable	84.1%	77.8%	80.9%	79.5%	80.7%	80.7%	80.9%
	Benchmark		89.0%	89.0%	89.0%	89.0%	89.0%	89.0%	89.0%
	Actual % Change from Prior Yr		-4.4%	-14.0%	-1.4%	-9.4%	-2.0%	-6.5%	-6.5%
% Point Difference (actual - benchmark)			-4.9%	-11.2%	-8.1%	-9.5%	-8.3%	-8.3%	-8.1%

Measure Description:
 Source: Famlink placement records.

The apparent drop in stability rates for FY09 has been caused by differences between the way CAMIS and FamLink stability measure data represent placements and in-home dependencies (now called trial return home).

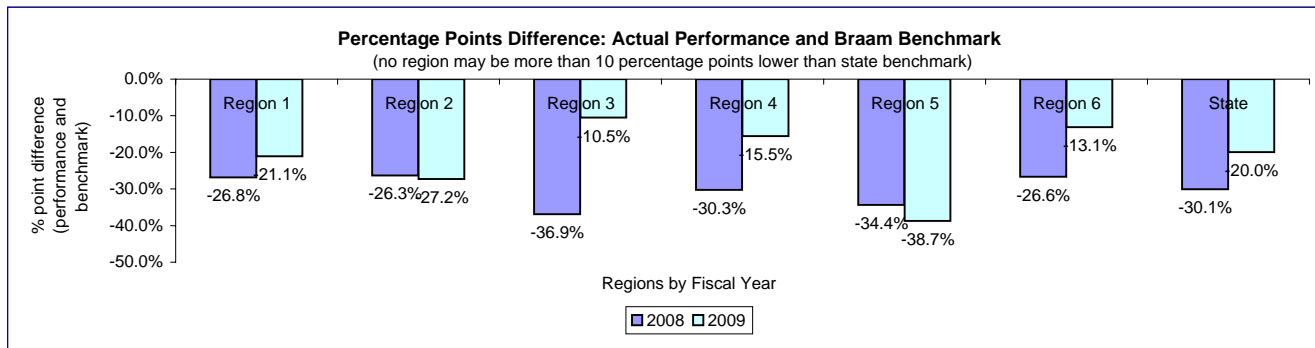
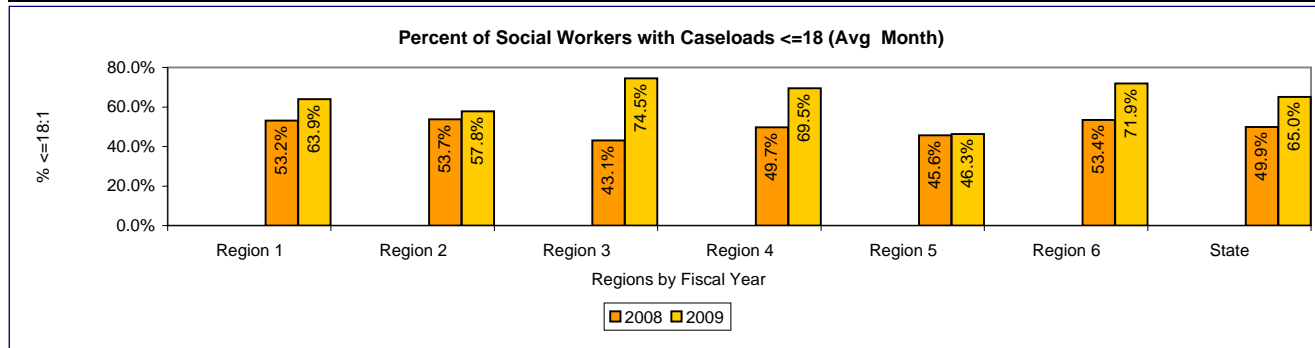
A comparison of CAMIS and FamLink stability data revealed that a number of stable placements included in the CAMIS measure data were excluded from the FamLink measure data. Reasons for these exclusions included: a) more stringent criteria for defining CA legal care and custody; b) more stringent criteria for identifying valid out-of-home placement episodes based on end reason codes, and c) the exclusion of short-term placements that were followed by in home services, which were bridged in the CAMIS data to create a 'great' episode but have not been bridged in the FamLink measure data.

Detail: a) children without legal custody records indicating CA responsibility were not included in the measure data for FY09. These children would have been assumed to be in CA custody in the CAMIS measure data. b) converted CAMIS placements with an end reason of 'fiscal cleanup' were excluded or bridged with another Bridging out-of-home and in-home episodes was necessary in CAMIS because these were both recorded as placement episodes. Famlink bridging should not be necessary because Famlink is capable of including the trial return home as part of the out-of-home placement episode. However, CAMIS trial return home records were often converted as temporary placement types.



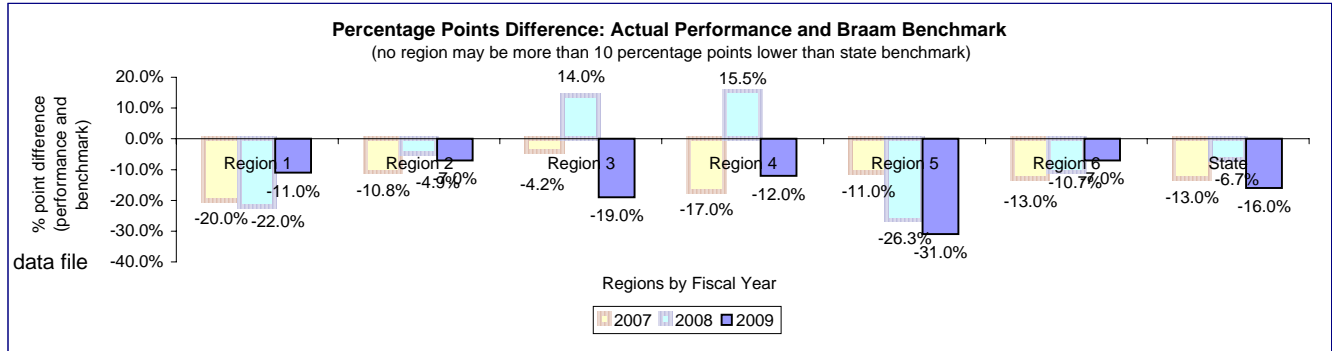
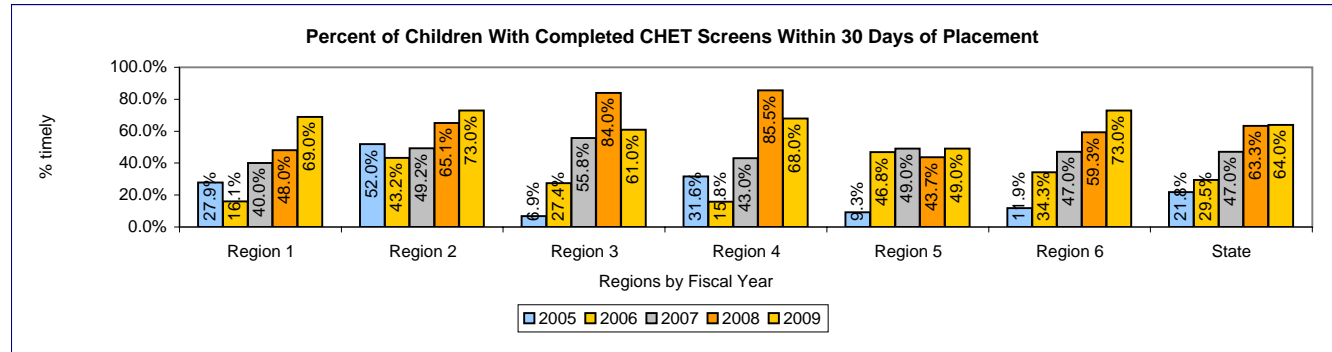
Report FY	Measure	Region 1	Region 2	Region 3	Region 4	Region 5	Region 6	State
2005	Actual Performance							
	Baseline							
	Actual % Change from Prior Yr % Point Difference (actual - benchmark)							
2006	Actual Performance							
	Baseline							
	Actual % Change from Prior Yr % Point Difference (actual - benchmark)							
2007	Actual Performance							
	Baseline							
	Actual % Change from Prior Yr % Point Difference (actual - benchmark)							
2008	Actual Performance	53.2%	53.7%	43.1%	49.7%	45.6%	53.4%	49.9%
	Benchmark	80.0%	80.0%	80.0%	80.0%	80.0%	80.0%	80.0%
	Actual % Change from Prior Yr % Point Difference (actual - benchmark)	-26.8%	-26.3%	-36.9%	-30.3%	-34.4%	-26.6%	-30.1%
2009	Actual Performance (Jan09)	63.9%	57.8%	74.5%	69.5%	46.3%	71.9%	65.0%
	Benchmark	85.0%	85.0%	85.0%	85.0%	85.0%	85.0%	85.0%
	Actual % Change from Prior Yr % Point Difference (actual - benchmark)	20.2%	7.5%	72.9%	39.6%	1.4%	34.7%	30.3%
		-21.1%	-27.2%	-10.5%	-15.5%	-38.7%	-13.1%	-20.0%

Measure Description:
 Source: CAMIS case and assignment records, Social Workers with at least one child in the Braam class, January 2009.



Report FY	Measure	Region 1	Region 2	Region 3	Region 4	Region 5	Region 6	State
2005	Actual Performance % 30 days	27.9%	52.0%	6.9%	31.6%	9.3%	11.9%	21.8%
	Baseline	0.0%	0.0%	0.0%	0.0%	0.0%	0.0%	0.0%
	Actual % Change from Prior Yr	0.0%	0.0%	0.0%	0.0%	0.0%	0.0%	0.0%
% Point Difference (actual - benchmark)		na	na	na	na	na	na	na
2006	Actual Performance % 30 days	16.1%	43.2%	27.4%	15.8%	46.8%	34.3%	29.5%
	Baseline	0.0%	0.0%	0.0%	0.0%	0.0%	0.0%	0.0%
	Actual % Change from Prior Yr	-42.3%	-16.9%	297.1%	-50.0%	403.2%	188.2%	35.3%
% Point Difference (actual - benchmark)		0.0%	0.0%	0.0%	0.0%	0.0%	0.0%	0.0%
2007	Actual Performance % 30 days	40.0%	49.2%	55.8%	43.0%	49.0%	47.0%	47.0%
	Benchmark	60.0%	60.0%	60.0%	60.0%	60.0%	60.0%	60.0%
	Actual % Change from Prior Yr	148.4%	13.9%	103.6%	172.2%	4.7%	37.0%	59.3%
% Point Difference (actual - benchmark)		-20.0%	-10.8%	-4.2%	-17.0%	-11.0%	-13.0%	-13.0%
2008	Actual Performance % 30 days	48.0%	65.1%	84.0%	85.5%	43.7%	59.3%	63.3%
	Benchmark	70.0%	70.0%	70.0%	70.0%	70.0%	70.0%	70.0%
	Actual % Change from Prior Yr	20.0%	32.4%	50.6%	98.9%	-10.9%	26.1%	34.6%
% Point Difference (actual - benchmark)		-22.0%	-4.9%	14.0%	15.5%	-26.3%	-10.7%	-6.7%
2009	Actual Performance % 30 days	69.0%	73.0%	61.0%	68.0%	49.0%	73.0%	64.0%
	Benchmark	80.0%	80.0%	80.0%	80.0%	80.0%	80.0%	80.0%
	Actual % Change from Prior Yr	43.7%	12.1%	-27.4%	-20.5%	12.2%	23.2%	1.1%
% Point Difference (actual - benchmark)		-11.0%	-7.0%	-19.0%	-12.0%	-31.0%	-7.0%	-16.0%

Measure Description:
 Source: Stand alone CHET database.
 Information is available since Famlink go live only (>2/1/2009). Completion of CHET screens for FY09 require the completion of all CHET domains.

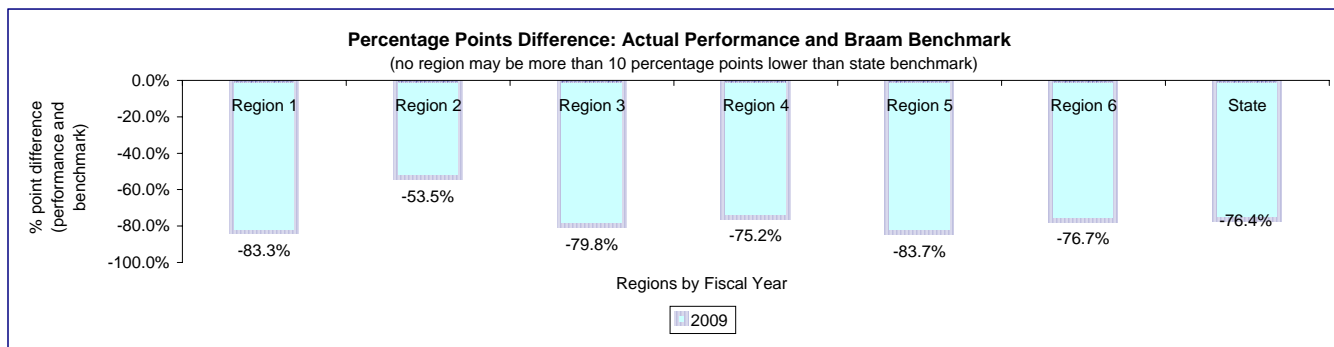
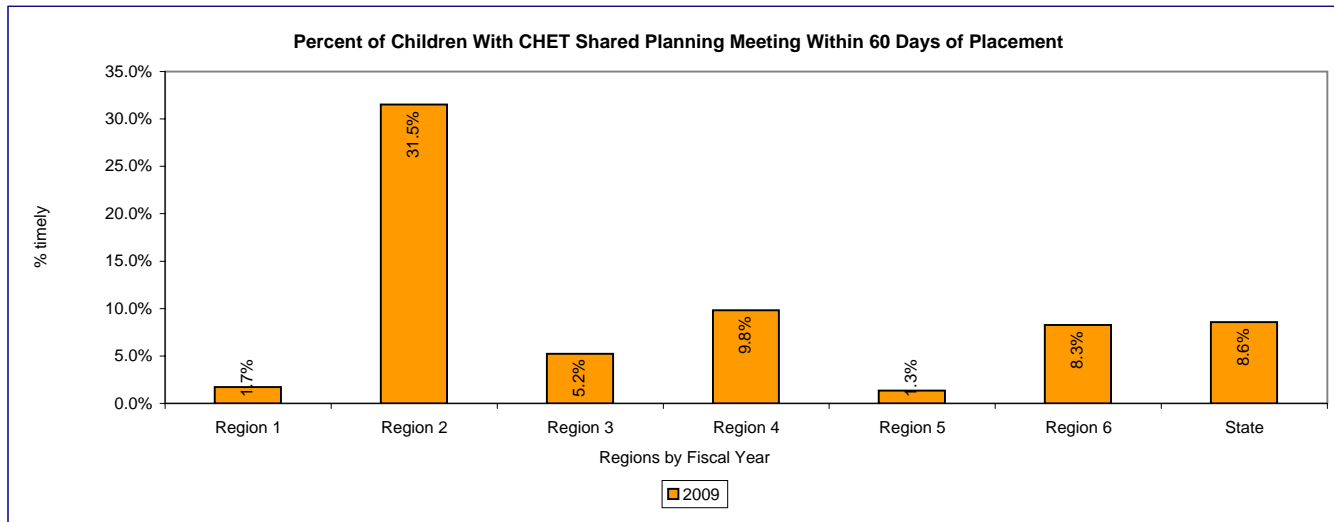


Report FY	Measure	Region 1	Region 2	Region 3	Region 4	Region 5	Region 6	State
2009	Actual Performance	1.7%	31.5%	5.2%	9.8%	1.3%	8.3%	8.6%
	Benchmark	85.0%	85.0%	85.0%	85.0%	85.0%	85.0%	85.0%
	Actual % Change from Prior Yr							
	% Point Difference (actual - benchmark)	-83.3%	-53.5%	-79.8%	-75.2%	-83.7%	-76.7%	-76.4%

Measure Description:

Source: CHET database and Famlink case not activity records. Information is available since Famlink go-live only (>2/1/2009). 89% of records have no documentation. 79% of documented CHET shared planning meetings were within 60 days of removal.

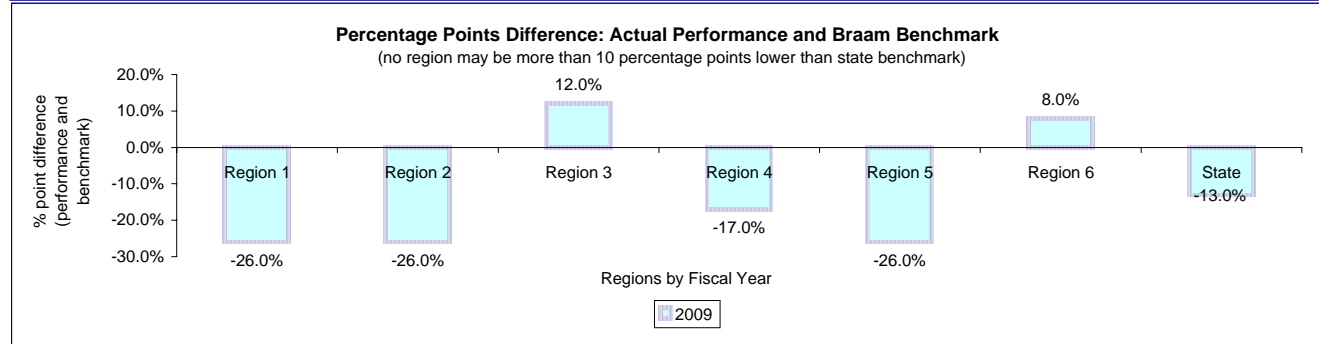
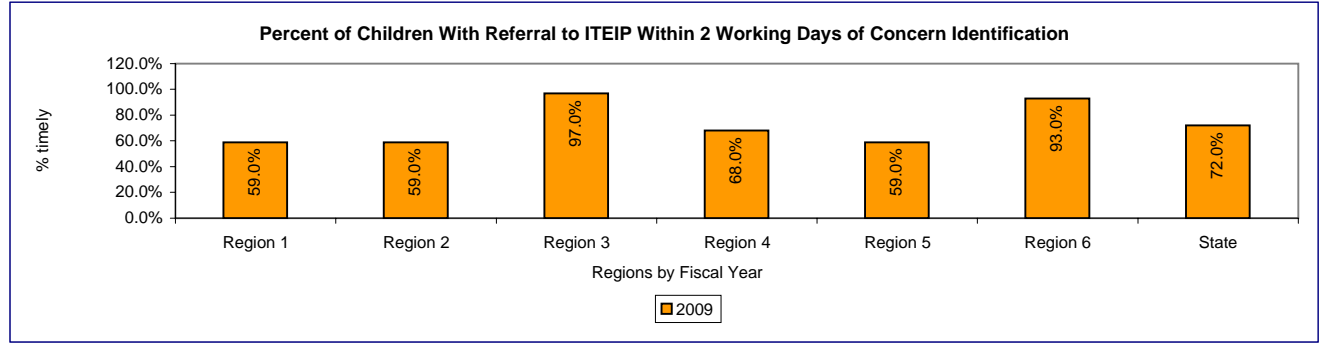
Data are not suitable for compliance evaluation for FY09.



Report FY	Measure	Region 1	Region 2	Region 3	Region 4	Region 5	Region 6	State
2009	Actual Performance	59.0%	59.0%	97.0%	68.0%	59.0%	93.0%	72.0%
	Benchmark	85.0%	85.0%	85.0%	85.0%	85.0%	85.0%	85.0%
	Actual % Change from Prior Yr							
	% Point Difference (actual - benchmark)	-26.0%	-26.0%	12.0%	-17.0%	-26.0%	8.0%	-13.0%

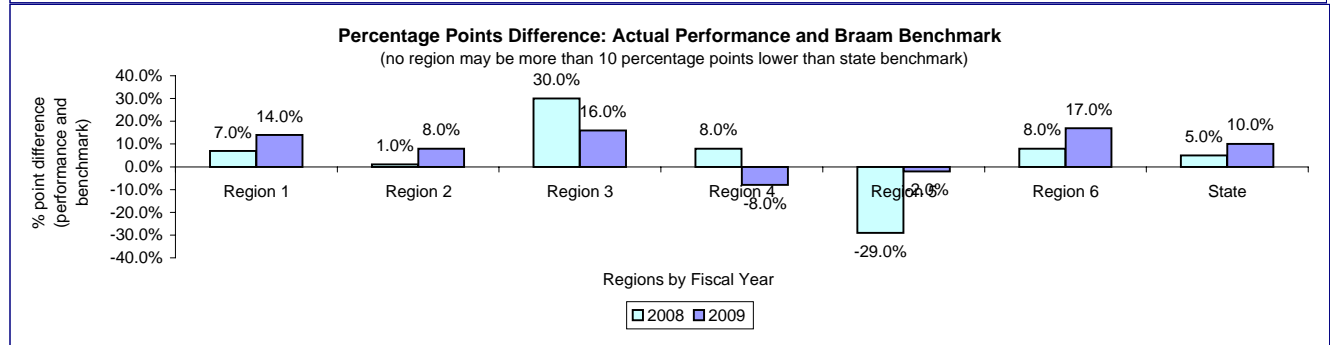
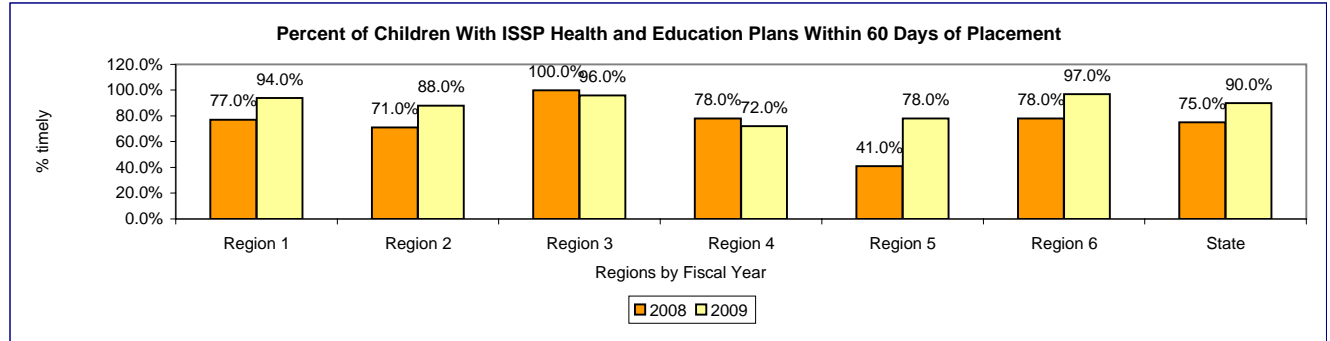
Measure Description:

Source: Stand alone CHET database. Information is available since Famlink go live only (>2/1/2009).



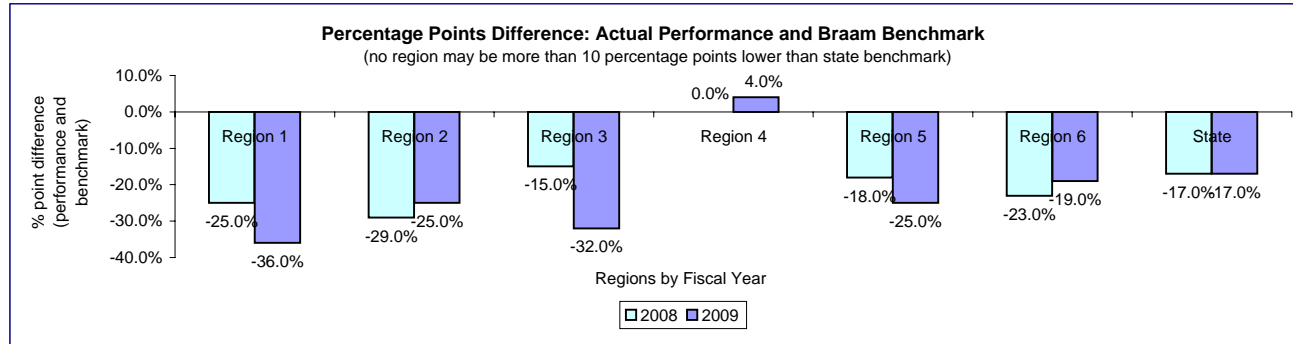
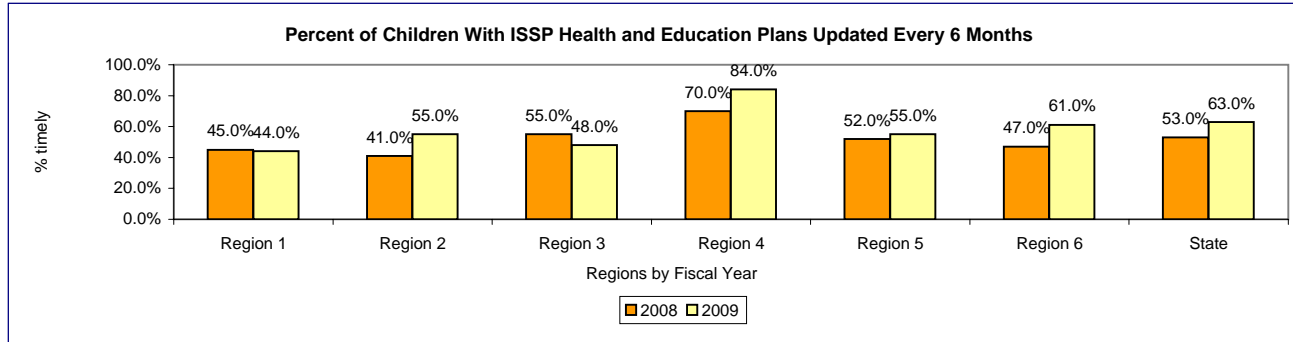
Report FY	Measure	Region 1	Region 2	Region 3	Region 4	Region 5	Region 6	State
2008	Actual Performance	77.0%	71.0%	100.0%	78.0%	41.0%	78.0%	75.0%
	Benchmark	70.0%	70.0%	70.0%	70.0%	70.0%	70.0%	70.0%
	Actual % Change from Prior Yr % Point Difference (actual - benchmark)	7.0%	1.0%	30.0%	8.0%	-29.0%	8.0%	5.0%
2009	Actual Performance	94.0%	88.0%	96.0%	72.0%	78.0%	97.0%	90.0%
	Benchmark	80.0%	80.0%	80.0%	80.0%	80.0%	80.0%	80.0%
	Actual % Change from Prior Yr % Point Difference (actual - benchmark)	14.0%	8.0%	16.0%	-8.0%	-2.0%	17.0%	10.0%

Measure Description:
Source: CA case review



Report FY	Measure	Region 1	Region 2	Region 3	Region 4	Region 5	Region 6	State
2008	Actual Performance	45.0%	41.0%	55.0%	70.0%	52.0%	47.0%	53.0%
	Benchmark	70.0%	70.0%	70.0%	70.0%	70.0%	70.0%	70.0%
	Actual % Change from Prior Yr % Point Difference (actual - benchmark)	-25.0%	-29.0%	-15.0%	0.0%	-18.0%	-23.0%	-17.0%
2009	Actual Performance	44.0%	55.0%	48.0%	84.0%	55.0%	61.0%	63.0%
	Benchmark	80.0%	80.0%	80.0%	80.0%	80.0%	80.0%	80.0%
	Actual % Change from Prior Yr % Point Difference (actual - benchmark)	-36.0%	-25.0%	-32.0%	4.0%	-25.0%	-19.0%	-17.0%

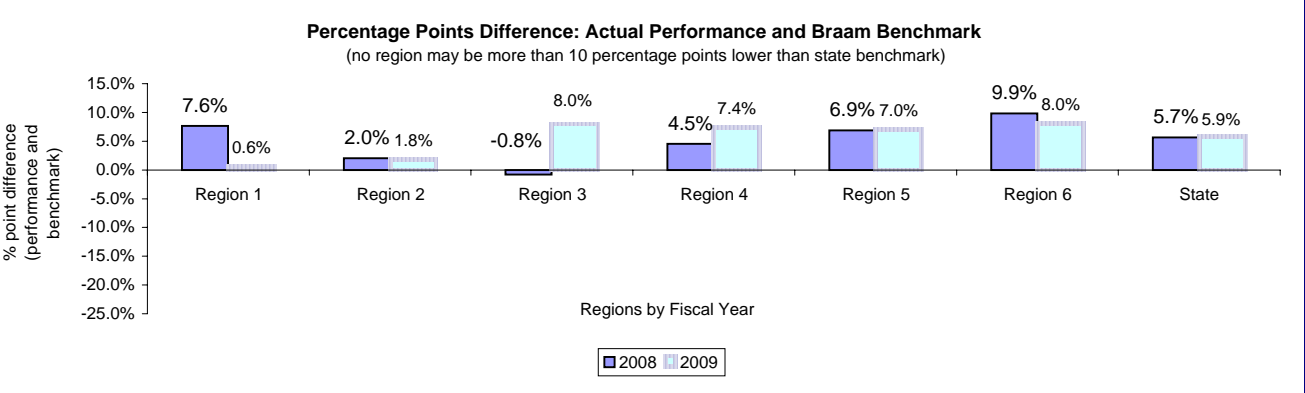
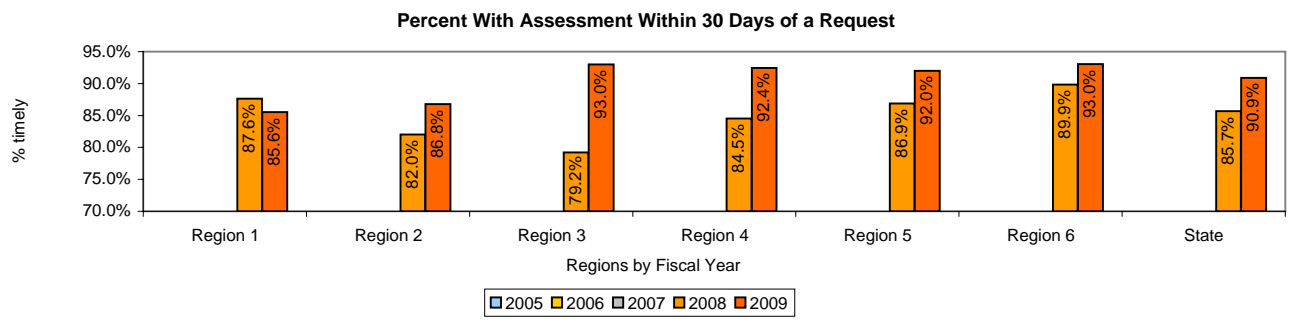
Measure Description:
Source: CA case review



Report FY	Measure	Region 1	Region 2	Region 3	Region 4	Region 5	Region 6	State
2005	Actual Performance	% timely						
	Baseline							
2006	Actual Performance	% timely	70.0%	70.0%	70.0%	70.0%	70.0%	70.0%
	Benchmark							
2007	Actual Performance	% timely	75.0%	75.0%	75.0%	75.0%	75.0%	75.0%
	Benchmark							
2008	Actual Performance	% timely	87.6%	82.0%	79.2%	84.5%	86.9%	89.9%
	Benchmark		80.0%	80.0%	80.0%	80.0%	80.0%	80.0%
2009	Actual Performance	% timely	85.6%	86.8%	93.0%	92.4%	92.0%	93.0%
	Benchmark		85.0%	85.0%	85.0%	85.0%	85.0%	85.0%
Actual % Change from Prior Yr			7.6%	2.0%	-0.8%	4.5%	6.9%	9.9%
% Point Difference (actual - benchmark)			0.6%	1.8%	8.0%	7.4%	7.0%	8.0%

Measure Description:

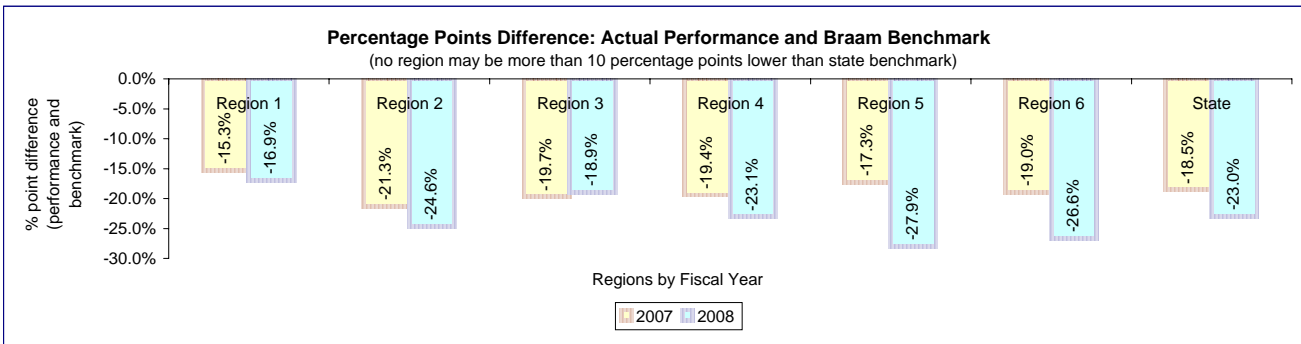
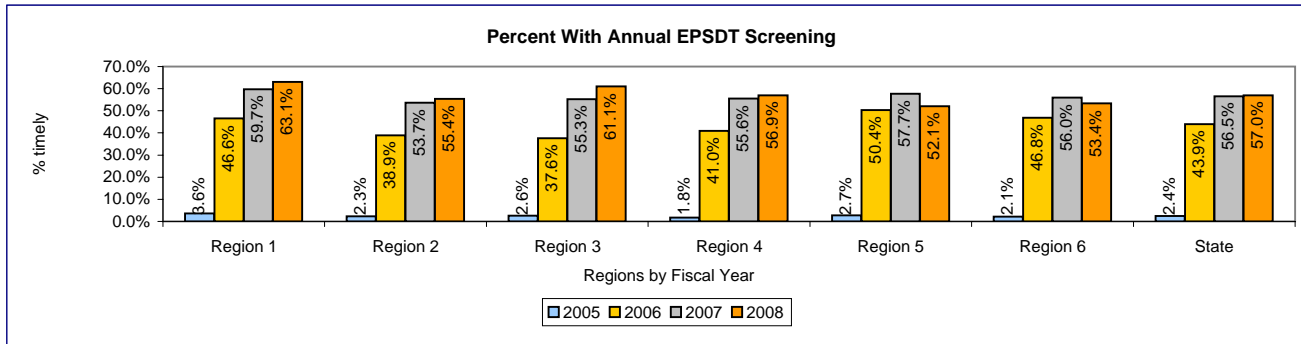
Source: HRSA data based on match with children in placement during FY09. Based on date of service request and date of RSN intake from records provided by HRSA for all children in care during the FY with a service request. Measure evaluates if children in care anytime during FY08 had a service request if so, the days between their service request(s) and their intake dates. If any intake date is within 30 days of any service request date the child is counted as compliant on this measure. NOTE: While service request data do not specify the type of service that was requested, MHD reports that these dates all represent requests for assessment/re-assessment (aka 'intakes'). Children and youth can have multiple request dates and intake dates in the data submitted by HRSA. Region designations only represent the placement region, not the region in which the child was residing at the time of the service request. Pierce County Data are not available for this measure Given prior performance of Pierce County in the past, the Panel agreed to substitute the statewide average for Pierce County as the measure until an RSN is operational (anticipated in FY2010) and actual data can be reported.



Report FY	Measure	Region 1	Region 2	Region 3	Region 4	Region 5	Region 6	State
2005	Actual Performance	3.6%	2.3%	2.6%	1.8%	2.7%	2.1%	2.4%
	Baseline	0.0%	0.0%	0.0%	0.0%	0.0%	0.0%	0.0%
	Actual % Change from Prior Yr	0.0%	0.0%	0.0%	0.0%	0.0%	0.0%	0.0%
	% Point Difference (actual - benchmark)	na	na	na	na	na	na	na
2006	Actual Performance	46.6%	38.9%	37.6%	41.0%	50.4%	46.8%	43.9%
	Benchmark	70.0%	70.0%	70.0%	70.0%	70.0%	70.0%	70.0%
	Actual % Change from Prior Yr	1194.4%	1591.3%	1346.2%	2177.8%	1766.7%	2128.6%	1729.2%
	% Point Difference (actual - benchmark)	0.0%	0.0%	0.0%	0.0%	0.0%	0.0%	0.0%
2007	Actual Performance	59.7%	53.7%	55.3%	55.6%	57.7%	56.0%	56.5%
	Benchmark	75.0%	75.0%	75.0%	75.0%	75.0%	75.0%	75.0%
	Actual % Change from Prior Yr	28.1%	38.0%	47.1%	35.6%	14.5%	19.7%	28.7%
	% Point Difference (actual - benchmark)	-15.3%	-21.3%	-19.7%	-19.4%	-17.3%	-19.0%	-18.5%
2008	Actual Performance	63.1%	55.4%	61.1%	61.1%	56.9%	52.1%	57.0%
	Benchmark	80.0%	80.0%	80.0%	80.0%	80.0%	80.0%	80.0%
	Actual % Change from Prior Yr	5.6%	3.1%	10.5%	2.4%	-9.8%	-4.7%	0.8%
	% Point Difference (actual - benchmark)	-16.9%	-24.6%	-18.9%	-23.1%	-27.9%	-26.6%	-23.0%

Measure Description:

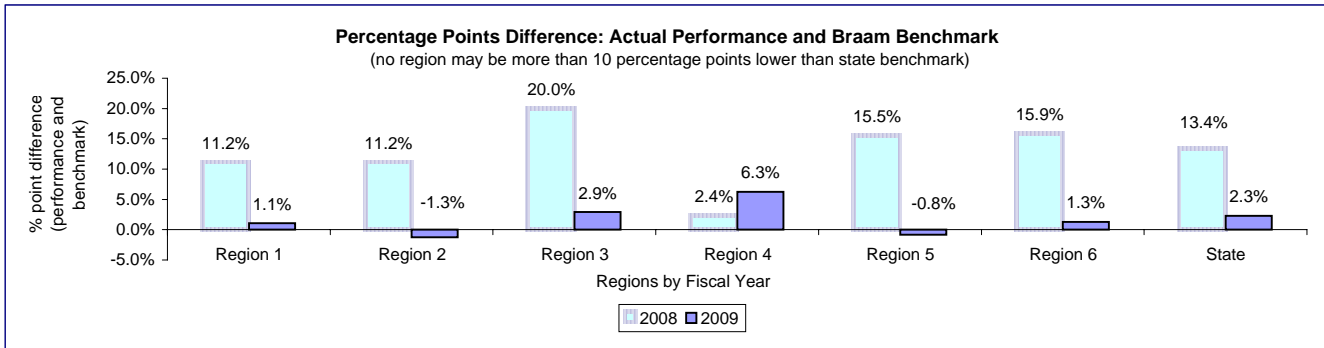
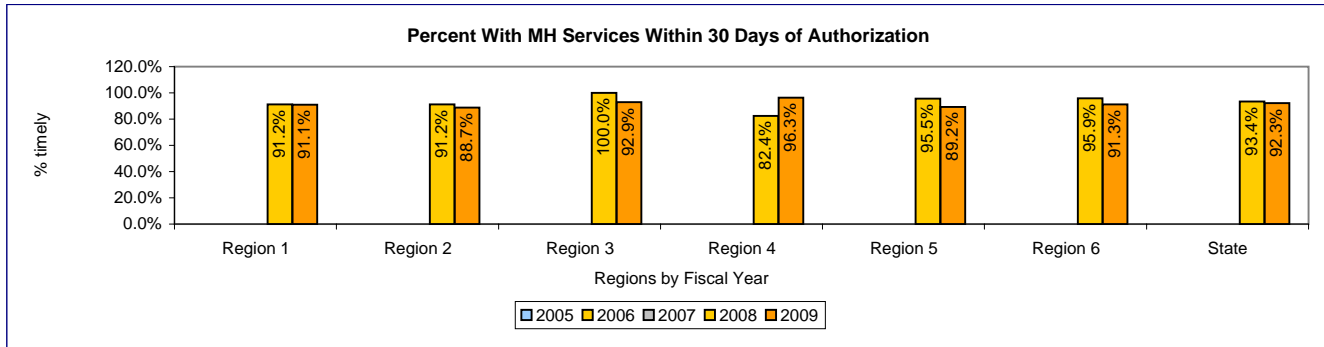
Source: EPSDT claims and encounter records from RDA based on HRSA records. Percent of children placed FY08 and in care for at least one year with an EPSDT date within 365 days of 6/30/2009



data file

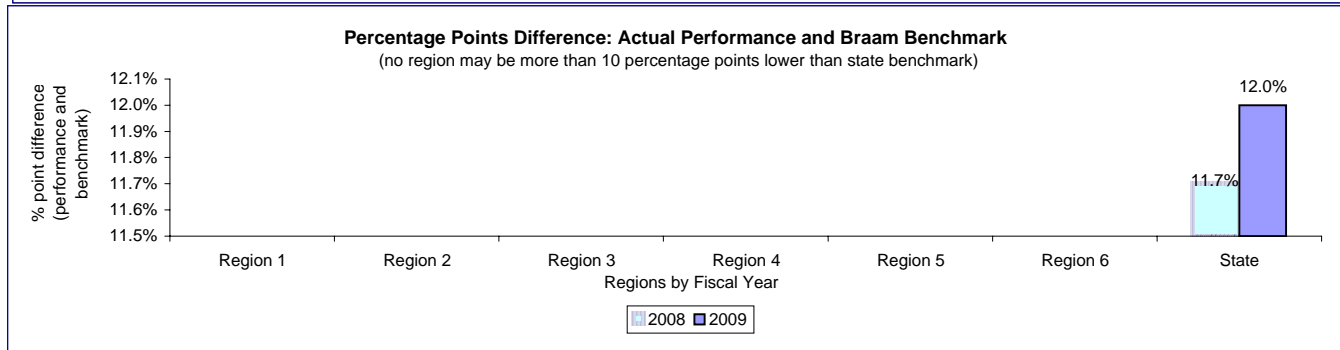
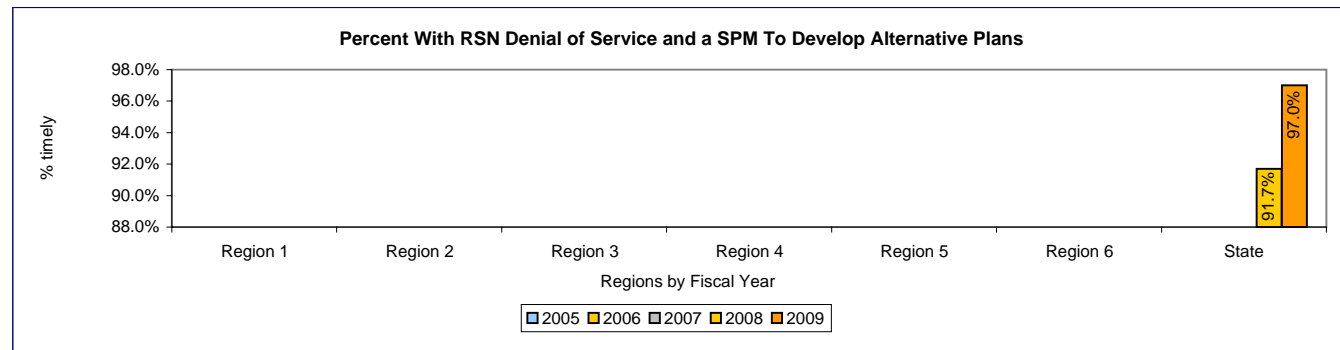
Report FY	Measure	Region 1	Region 2	Region 3	Region 4	Region 5	Region 6	State
2005	Actual Performance Baseline							
	Actual % Change from Prior Yr							
	% Point Difference (actual - benchmark)							
2006	Actual Performance Benchmark	70.0%	70.0%	70.0%	70.0%	70.0%	70.0%	70.0%
	Actual % Change from Prior Yr							
	% Point Difference (actual - benchmark)							
2007	Actual Performance Benchmark	75.0%	75.0%	75.0%	75.0%	75.0%	75.0%	75.0%
	Actual % Change from Prior Yr							
	% Point Difference (actual - benchmark)							
2008	Actual Performance Benchmark	91.2% 80.0%	91.2% 80.0%	100.0% 80.0%	82.4% 80.0%	95.5% 80.0%	95.9% 80.0%	93.4% 80.0%
	Actual % Change from Prior Yr							
	% Point Difference (actual - benchmark)	11.2%	11.2%	20.0%	2.4%	15.5%	15.9%	13.4%
2009	Actual Performance Benchmark	91.1% 90.0%	88.7% 90.0%	92.9% 90.0%	96.3% 90.0%	89.2% 90.0%	91.3% 90.0%	92.3% 90.0%
	Actual % Change from Prior Yr							
	% Point Difference (actual - benchmark)	1.1%	-1.3%	2.9%	6.3%	-0.8%	1.3%	2.3%

Measure Description:
Source: HRSA data based on match with children in placement during FY09.



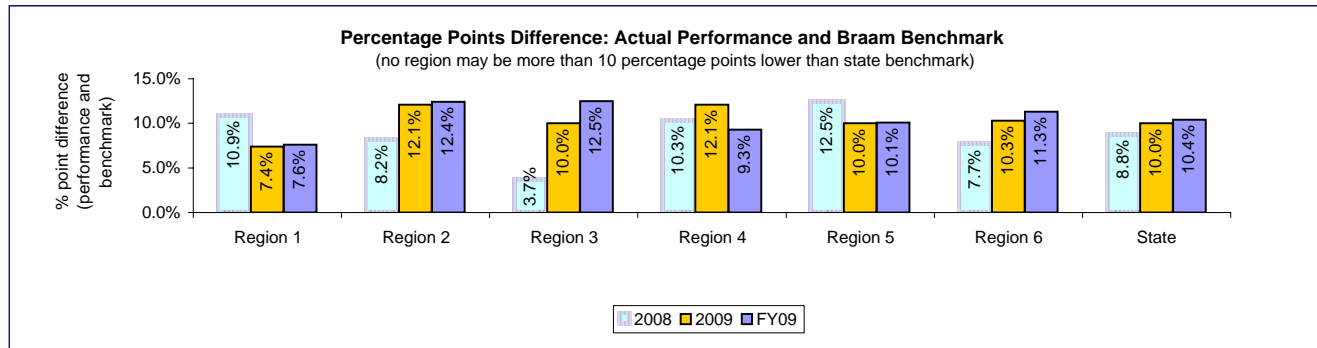
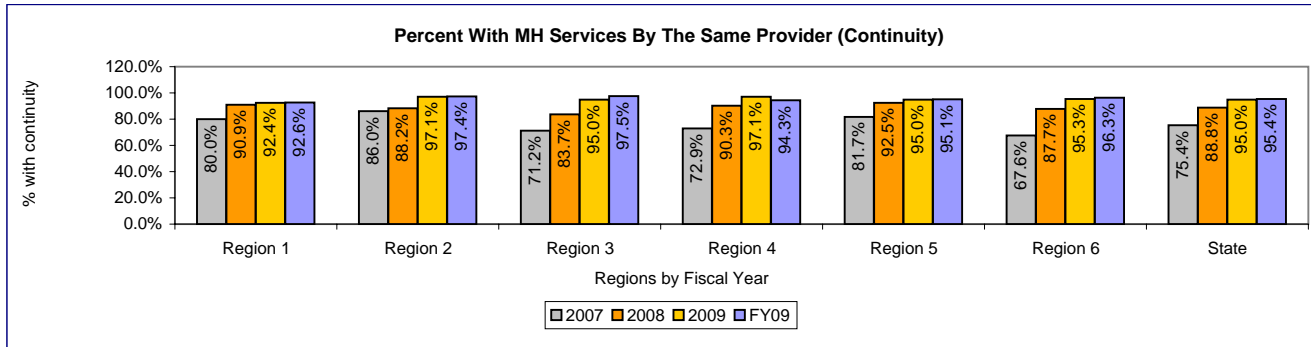
Report FY	Measure	Region 1	Region 2	Region 3	Region 4	Region 5	Region 6	State
2005	Actual Performance							
	Baseline							
	Actual % Change from Prior Yr % Point Difference (actual - benchmark)							
2006	Actual Performance							
	Benchmark	70.0%	70.0%	70.0%	70.0%	70.0%	70.0%	70.0%
	Actual % Change from Prior Yr % Point Difference (actual - benchmark)							
2007	Actual Performance							
	Benchmark	75.0%	75.0%	75.0%	75.0%	75.0%	75.0%	75.0%
	Actual % Change from Prior Yr % Point Difference (actual - benchmark)							
2008	Actual Performance							91.7%
	Benchmark							80.0%
	Actual % Change from Prior Yr % Point Difference (actual - benchmark)							11.7%
2009	Actual Performance							97.0%
	Benchmark							85.0%
	Actual % Change from Prior Yr % Point Difference (actual - benchmark)							5.8% 12.0%

Measure Description:
 Source: Reports of service denials from RSN contractors to MHD with CA follow-up to determine child's needs and service status. (32/33 for FY09). Calculation method is same as FY08 method.



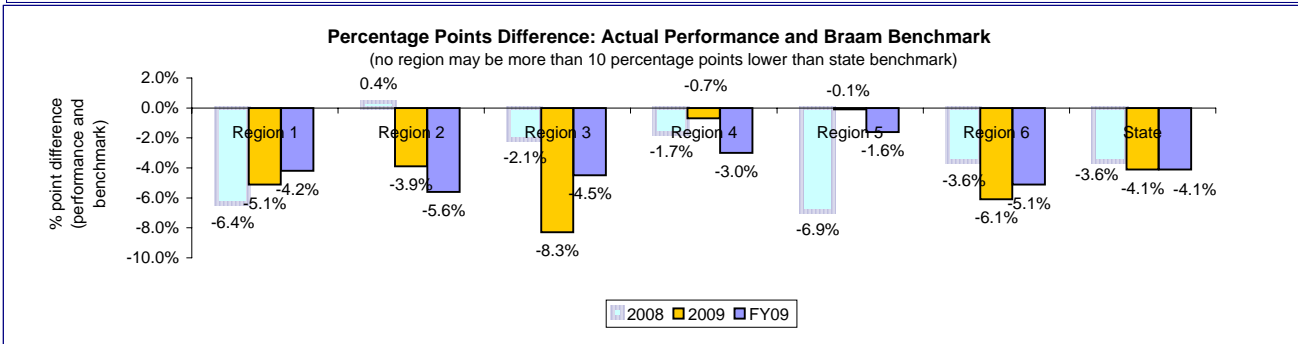
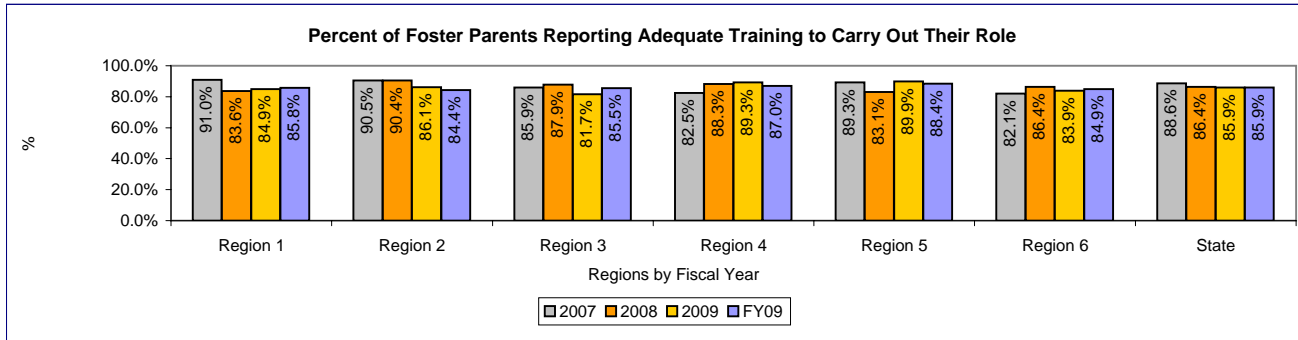
Report FY	Measure	Region 1	Region 2	Region 3	Region 4	Region 5	Region 6	State
2006	Actual Performance Baseline Actual % Change from Prior Yr % Point Difference (actual - benchmark)	% same						
2007	Actual Performance (CY06) Baseline Actual % Change from Prior Yr % Point Difference (actual - benchmark)	% same 80.0% na na	86.0% na na	71.2% na na	72.9% na na	81.7% na na	67.6% na na	75.4% na na
2008	Actual Performance (CY07) Benchmark Actual % Change from Prior Yr % Point Difference (actual - benchmark)	% same 90.9% 80.0% 13.6% 10.9%	88.2% 80.0% 2.6% 8.2%	83.7% 80.0% 17.6% 3.7%	90.3% 80.0% 23.9% 10.3%	92.5% 80.0% 13.2% 12.5%	87.7% 80.0% 29.7% 7.7%	88.8% 80.0% 17.8% 8.8%
2009	Actual Performance (CY08) Benchmark Actual % Change from Prior Yr % Point Difference (actual - benchmark)	% same 92.4% 85.0% 1.7% 7.4%	97.1% 85.0% 10.1% 12.1%	95.0% 85.0% 13.5% 10.0%	97.1% 85.0% 7.5% 12.1%	95.0% 85.0% 2.7% 10.0%	95.3% 85.0% 8.7% 10.3%	95.0% 85.0% 7.0% 10.0%
FY09	Actual Performance (FY09) Benchmark Actual % Change from Prior Yr % Point Difference (actual - benchmark)	% same 92.6% 85.0% 0.2% 7.6%	97.4% 85.0% 0.3% 12.4%	97.5% 85.0% 2.6% 12.5%	94.3% 85.0% -2.9% 9.3%	95.1% 85.0% 0.1% 10.1%	96.3% 85.0% 1.0% 11.3%	95.4% 85.0% 0.4% 10.4%

Measure Description:
Source: Foster Parent Survey



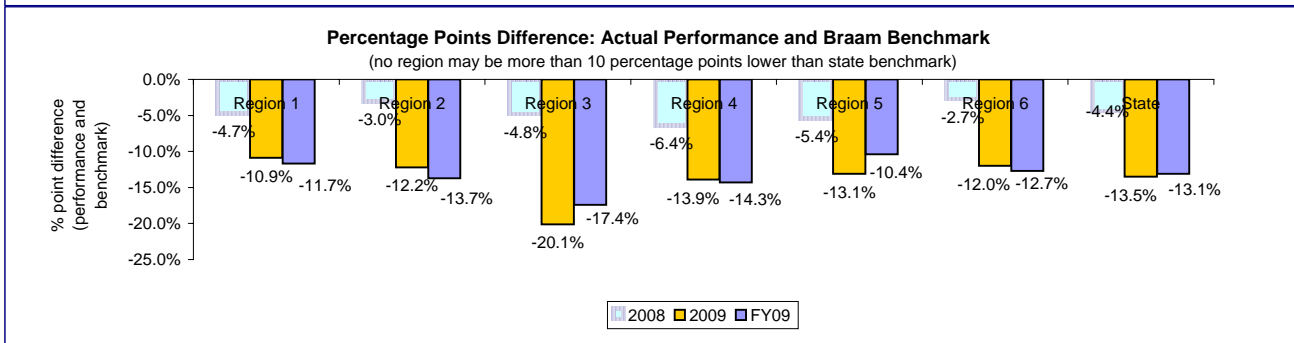
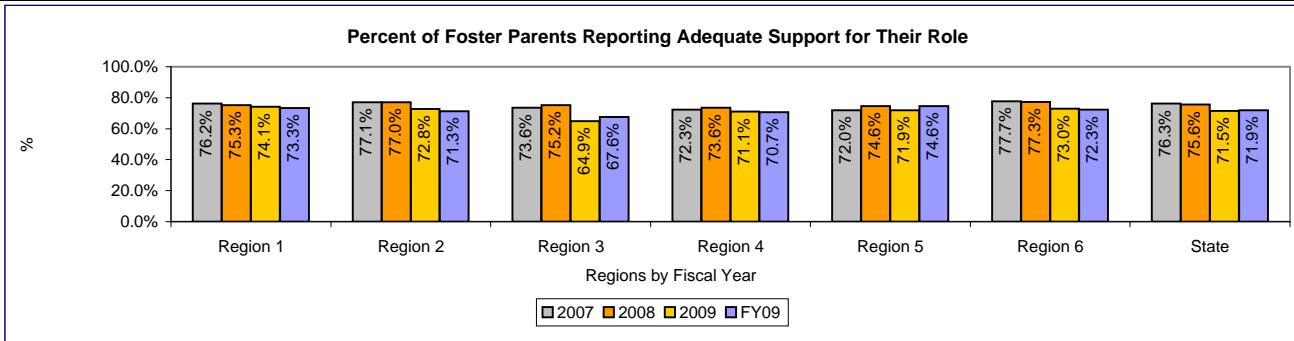
Report FY	Measure	Region 1	Region 2	Region 3	Region 4	Region 5	Region 6	State
2006	Actual Performance							
	Baseline							
	Actual % Change from Prior Yr							
	% Point Difference (actual - benchmark)							
2007	Actual Performance	91.0%	90.5%	85.9%	82.5%	89.3%	82.1%	88.6%
	Baseline							
	Actual % Change from Prior Yr	na	na	na	na	na	na	na
	% Point Difference (actual - benchmark)	na	na	na	na	na	na	na
2008	Actual Performance (CY07)	83.6%	90.4%	87.9%	88.3%	83.1%	86.4%	86.4%
	Benchmark	90.0%	90.0%	90.0%	90.0%	90.0%	90.0%	90.0%
	Actual % Change from Prior Yr	-8.1%	-0.1%	2.3%	7.0%	-6.9%	5.2%	-2.5%
	% Point Difference (actual - benchmark)	-6.4%	0.4%	-2.1%	-1.7%	-6.9%	-3.6%	-3.6%
2009	Actual Performance (CY08)	84.9%	86.1%	81.7%	89.3%	89.9%	83.9%	85.9%
	Benchmark	90.0%	90.0%	90.0%	90.0%	90.0%	90.0%	90.0%
	Actual % Change from Prior Yr	1.6%	-4.8%	-7.1%	1.1%	8.2%	-2.9%	-0.6%
	% Point Difference (actual - benchmark)	-5.1%	-3.9%	-8.3%	-0.7%	-0.1%	-6.1%	-4.1%
FY09	Actual Performance (FY09)	85.8%	84.4%	85.5%	87.0%	88.4%	84.9%	85.9%
	Benchmark	90.0%	90.0%	90.0%	90.0%	90.0%	90.0%	90.0%
	Actual % Change from Prior Yr	1.1%	-2.0%	4.7%	-2.6%	-1.7%	1.2%	0.0%
	% Point Difference (actual - benchmark)	-4.2%	-5.6%	-4.5%	-3.0%	-1.6%	-5.1%	-4.1%

Measure Description:
Source: Foster Parent Survey



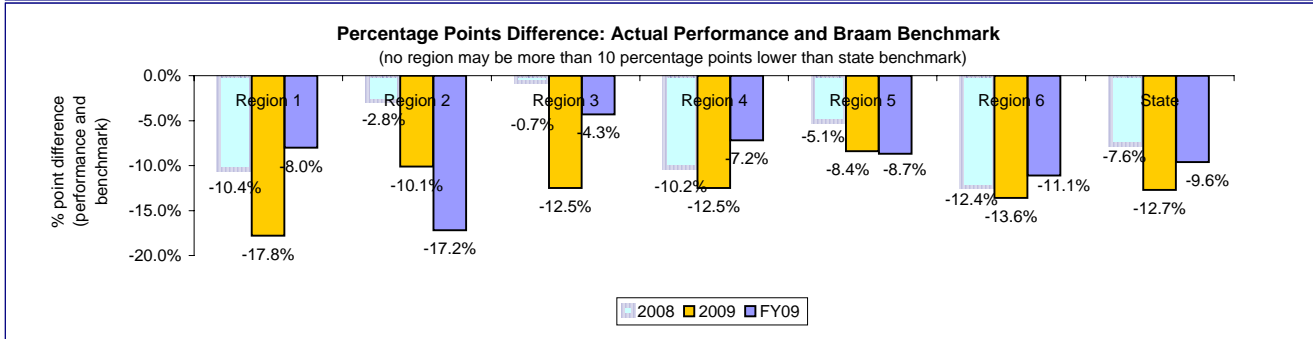
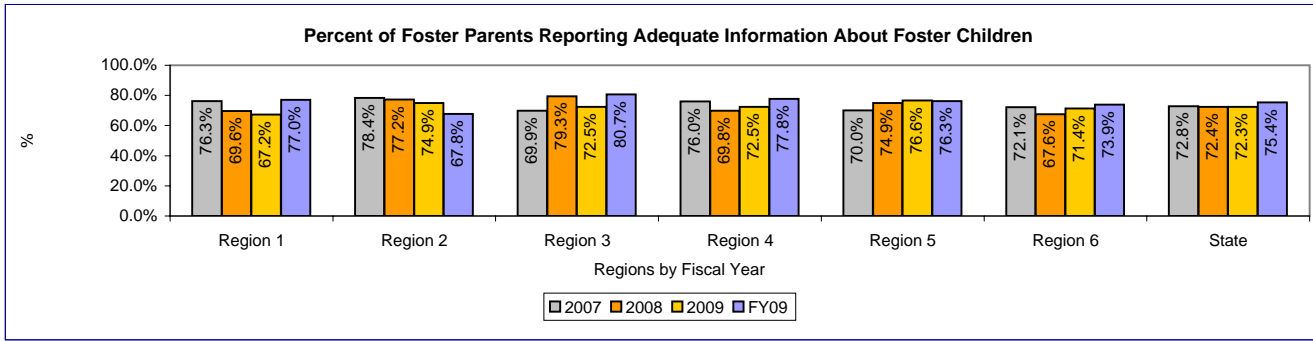
Report FY	Measure	Region 1	Region 2	Region 3	Region 4	Region 5	Region 6	State
2006	Actual Performance							
	Baseline							
	Actual % Change from Prior Yr							
	% Point Difference (actual - benchmark)							
2007	Actual Performance (CY06)	76.2%	77.1%	73.6%	72.3%	72.0%	77.7%	76.3%
	Baseline							
	Actual % Change from Prior Yr	na	na	na	na	na	na	na
	% Point Difference (actual - benchmark)	na	na	na	na	na	na	na
2008	Actual Performance (CY07)	75.3%	77.0%	75.2%	73.6%	74.6%	77.3%	75.6%
	Benchmark	80.0%	80.0%	80.0%	80.0%	80.0%	80.0%	80.0%
	Actual % Change from Prior Yr	-1.2%	-0.1%	2.2%	1.8%	3.6%	-0.5%	-0.9%
	% Point Difference (actual - benchmark)	-4.7%	-3.0%	-4.8%	-6.4%	-5.4%	-2.7%	-4.4%
2009	Actual Performance (CY08)	74.1%	72.8%	64.9%	71.1%	71.9%	73.0%	71.5%
	Benchmark	85.0%	85.0%	85.0%	85.0%	85.0%	85.0%	85.0%
	Actual % Change from Prior Yr	-1.6%	-5.5%	-13.7%	-3.4%	-3.6%	-5.6%	-5.4%
	% Point Difference (actual - benchmark)	-10.9%	-12.2%	-20.1%	-13.9%	-13.1%	-12.0%	-13.5%
FY09	Actual Performance (FY09)	73.3%	71.3%	67.6%	70.7%	74.6%	72.3%	71.9%
	Benchmark	85.0%	85.0%	85.0%	85.0%	85.0%	85.0%	85.0%
	Actual % Change from Prior Yr	-1.1%	-2.1%	4.2%	-0.6%	3.8%	-1.0%	0.6%
	% Point Difference (actual - benchmark)	-11.7%	-13.7%	-17.4%	-14.3%	-10.4%	-12.7%	-13.1%

Measure Description:
Source: Foster Parent Survey



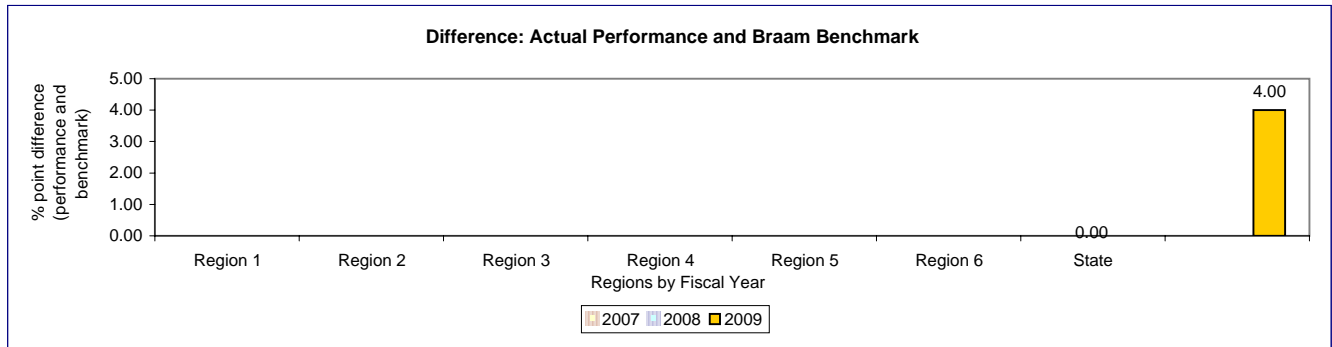
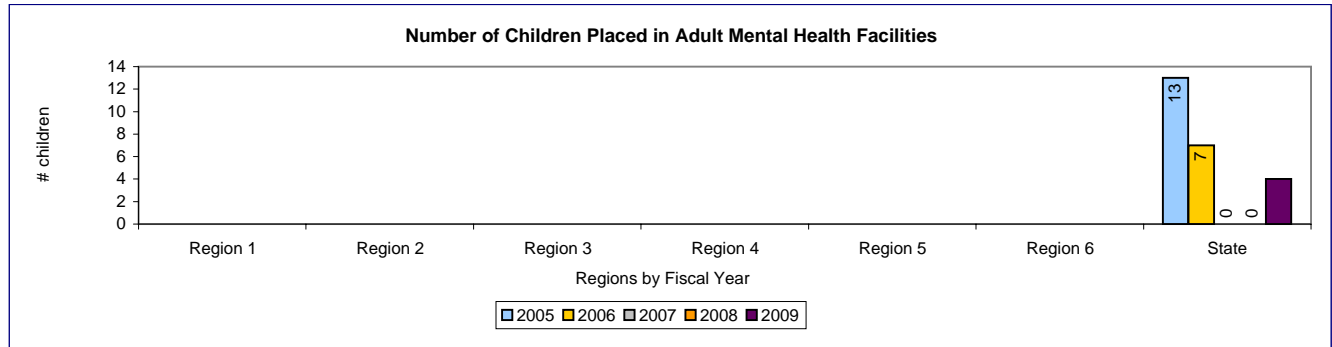
Report FY	Measure	Region 1	Region 2	Region 3	Region 4	Region 5	Region 6	State
2006	Actual Performance Baseline							
	Actual % Change from Prior Yr							
	% Point Difference (actual - benchmark)							
2007	Actual Performance (CY06) Baseline	76.3%	78.4%	69.9%	76.0%	70.0%	72.1%	72.8%
	Actual % Change from Prior Yr	na	na	na	na	na	na	na
	% Point Difference (actual - benchmark)	na	na	na	na	na	na	na
2008	Actual Performance (CY07) Benchmark	69.6%	77.2%	79.3%	69.8%	74.9%	67.6%	72.4%
	Actual % Change from Prior Yr	-8.8%	-1.5%	13.4%	-8.2%	7.0%	-6.2%	-0.5%
	% Point Difference (actual - benchmark)	-10.4%	-2.8%	-0.7%	-10.2%	-5.1%	-12.4%	-7.6%
2009	Actual Performance (CY08) Benchmark	67.2%	74.9%	72.5%	72.5%	76.6%	71.4%	72.3%
	Actual % Change from Prior Yr	-3.4%	-3.0%	-8.6%	3.9%	2.3%	5.6%	-0.1%
	% Point Difference (actual - benchmark)	-17.8%	-10.1%	-12.5%	-12.5%	-8.4%	-13.6%	-12.7%
FY09	Actual Performance (FY09) Benchmark	77.0%	67.8%	80.7%	77.8%	76.3%	73.9%	75.4%
	Actual % Change from Prior Yr	14.6%	-9.5%	11.3%	7.3%	-0.4%	3.5%	4.3%
	% Point Difference (actual - benchmark)	-8.0%	-17.2%	-4.3%	-7.2%	-8.7%	-11.1%	-9.6%

Measure Description:
Source: Foster Parent Survey



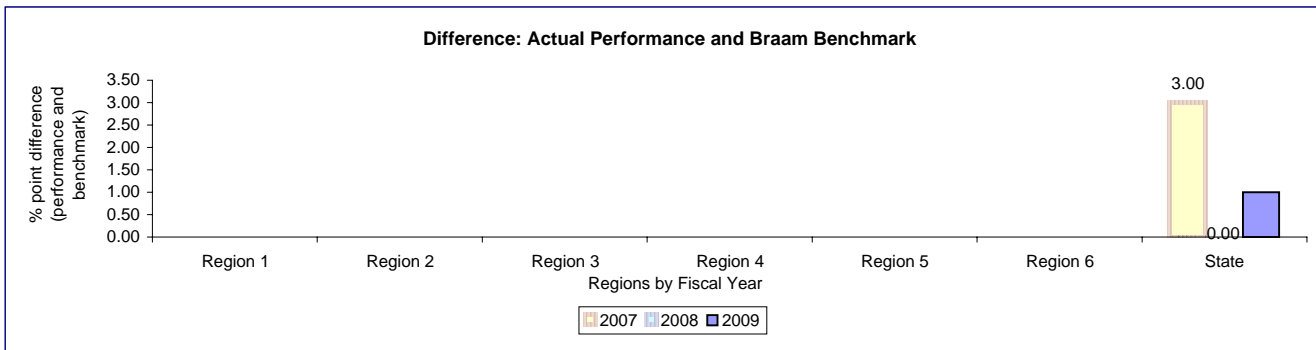
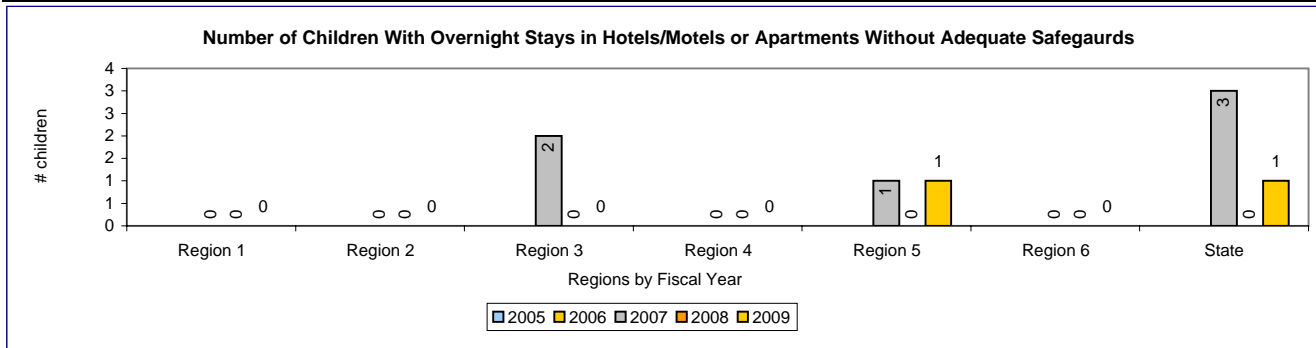
Report FY	Measure	Region 1	Region 2	Region 3	Region 4	Region 5	Region 6	State
2005	Actual Performance Baseline Actual % Change from Prior Yr Difference (actual - benchmark)	# placed						13
2006	Actual Performance Baseline Actual % Change from Prior Yr Difference (actual - benchmark)	# placed						7
2007	Actual Performance Benchmark Actual % Change from Prior Yr Difference (actual - benchmark)	# placed						0
2008	Actual Performance Benchmark Actual % Change from Prior Yr Difference (actual - benchmark)	# placed						0
2009	Actual Performance Benchmark Actual % Change from Prior Yr Difference (actual - benchmark)	# placed						4
								4.00

Measure Description:
 Source: Report provided by the Mental Health Division, HRSA, DSHS.



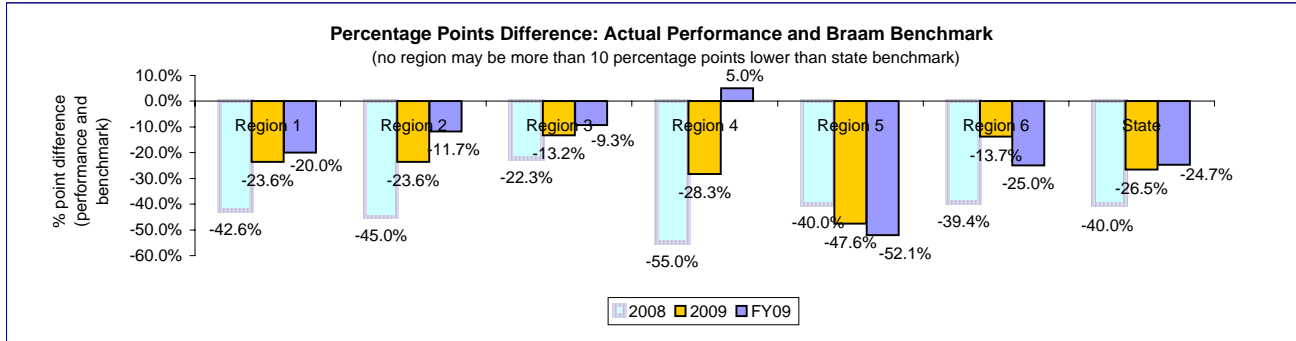
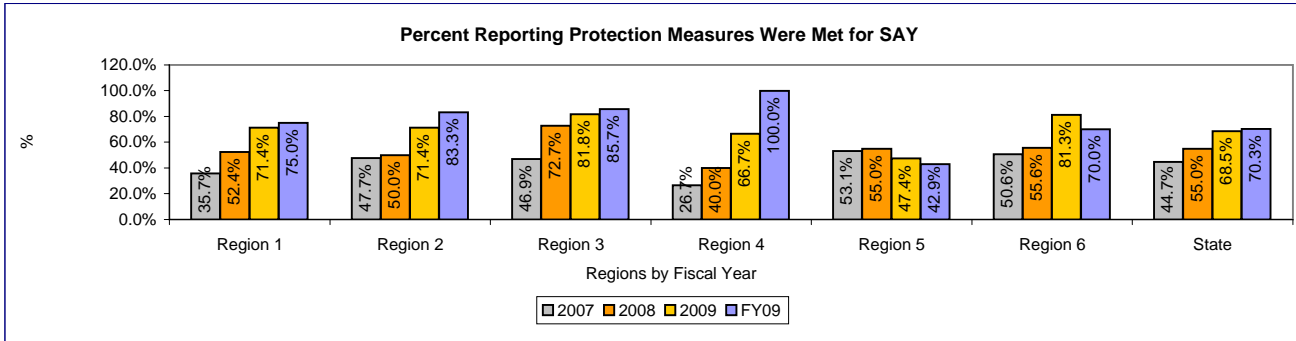
Report FY	Measure	Region 1	Region 2	Region 3	Region 4	Region 5	Region 6	State
2005	Actual Performance Baseline Actual % Change from Prior Yr Difference (actual - benchmark)	# placed						
2006	Actual Performance Baseline Actual % Change from Prior Yr Difference (actual - benchmark)	# placed						
2007	Actual Performance Benchmark Actual % Change from Prior Yr Difference (actual - benchmark)	# placed 0	0 0	0 0	2 0	0 0	1 0	0 0
2008	Actual Performance Benchmark Actual % Change from Prior Yr Difference (actual - benchmark)	# placed 0	0 0	0 0	0 0	0 0	0 0	0 0
2009	Actual Performance Benchmark Actual % Change from Prior Yr Difference (actual - benchmark)	# placed 0	0 0	0 0	0 0	1 0	0 0	1 0

Measure Description:
 Source: AIRS report. The number of youth with stays in hotels, motels, apartments or offices, based on documentation in Administrative Incident Reporting System (AIRS).



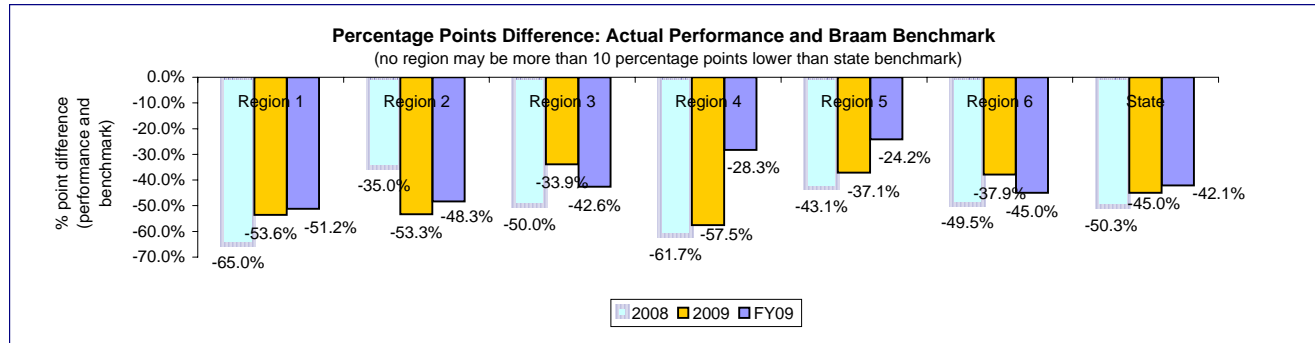
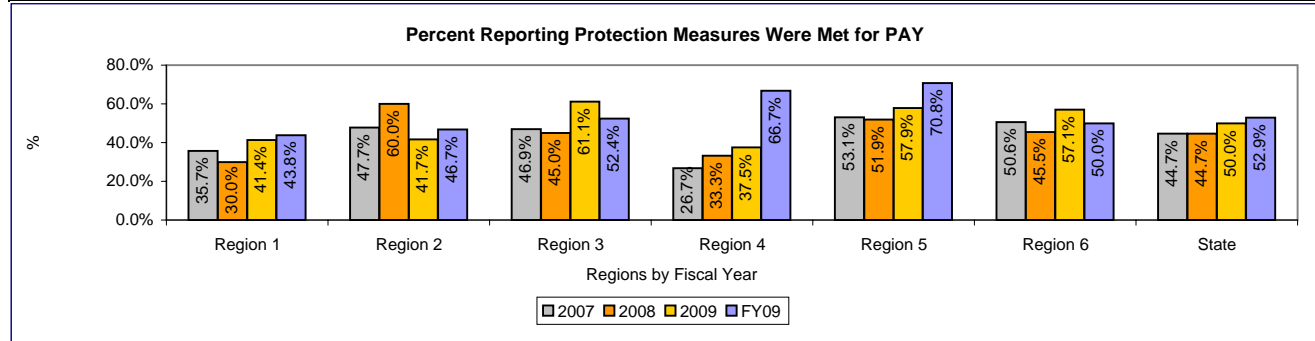
Report FY	Measure	Region 1	Region 2	Region 3	Region 4	Region 5	Region 6	State
2006	Actual Performance Baseline							
	Actual % Change from Prior Yr							
	% Point Difference (actual - benchmark)							
2007	Actual Performance (CY06)	35.7%	47.7%	46.9%	26.7%	53.1%	50.6%	44.7%
	Benchmark	95.0%	95.0%	95.0%	95.0%	95.0%	95.0%	95.0%
	Actual % Change from Prior Yr	na	na	na	na	na	na	na
	% Point Difference (actual - benchmark)	-59.3%	-47.3%	-48.1%	-68.3%	-41.9%	-44.4%	-50.3%
2008	Actual Performance (CY07)	52.4%	50.0%	72.7%	40.0%	55.0%	55.6%	55.0%
	Benchmark	95.0%	95.0%	95.0%	95.0%	95.0%	95.0%	95.0%
	Actual % Change from Prior Yr	46.8%	4.8%	55.0%	49.8%	3.6%	9.9%	23.0%
	% Point Difference (actual - benchmark)	-42.6%	-45.0%	-22.3%	-55.0%	-40.0%	-39.4%	-40.0%
2009	Actual Performance (CY08)	71.4%	71.4%	81.8%	66.7%	47.4%	81.3%	68.5%
	Benchmark	95.0%	95.0%	95.0%	95.0%	95.0%	95.0%	95.0%
	Actual % Change from Prior Yr	36.3%	42.8%	12.5%	66.8%	-13.8%	46.2%	24.5%
	% Point Difference (actual - benchmark)	-23.6%	-23.6%	-13.2%	-28.3%	-47.6%	-13.7%	-26.5%
FY09	Actual Performance (FY09)	75.0%	83.3%	85.7%	100.0%	42.9%	70.0%	70.3%
	Benchmark	95.0%	95.0%	95.0%	95.0%	95.0%	95.0%	95.0%
	Actual % Change from Prior Yr	5.0%	16.7%	4.8%	49.9%	-9.5%	-13.9%	2.6%
	% Point Difference (actual - benchmark)	-20.0%	-11.7%	-9.3%	5.0%	-52.1%	-25.0%	-24.7%

Measure Description:
Source: Foster Parent Survey.



Report FY	Measure	Region 1	Region 2	Region 3	Region 4	Region 5	Region 6	State
2006	Actual Performance							
	Baseline							
	Actual % Change from Prior Yr							
	% Point Difference (actual - benchmark)							
2007	Actual Performance (CY06)	35.7%	47.7%	46.9%	26.7%	53.1%	50.6%	44.7%
	Benchmark	95.0%	95.0%	95.0%	95.0%	95.0%	95.0%	95.0%
	Actual % Change from Prior Yr	na	na	na	na	na	na	na
	% Point Difference (actual - benchmark)	-59.3%	-47.3%	-48.1%	-68.3%	-41.9%	-44.4%	-50.3%
2008	Actual Performance (CY07)	30.0%	60.0%	45.0%	33.3%	51.9%	45.5%	44.7%
	Benchmark	95.0%	95.0%	95.0%	95.0%	95.0%	95.0%	95.0%
	Actual % Change from Prior Yr	-16.0%	25.8%	-4.1%	24.7%	-2.3%	-10.1%	0.0%
	% Point Difference (actual - benchmark)	-65.0%	-35.0%	-50.0%	-61.7%	-43.1%	-49.5%	-50.3%
2009	Actual Performance (CY08)	41.4%	41.7%	61.1%	37.5%	57.9%	57.1%	50.0%
	Benchmark	95.0%	95.0%	95.0%	95.0%	95.0%	95.0%	95.0%
	Actual % Change from Prior Yr	38.0%	-30.5%	35.8%	12.6%	11.6%	25.5%	11.9%
	% Point Difference (actual - benchmark)	-53.6%	-53.3%	-33.9%	-57.5%	-37.1%	-37.9%	-45.0%
FY09	Actual Performance (FY09)	43.8%	46.7%	52.4%	66.7%	70.8%	50.0%	52.9%
	Benchmark	95.0%	95.0%	95.0%	95.0%	95.0%	95.0%	95.0%
	Actual % Change from Prior Yr	5.8%	12.0%	-14.2%	77.9%	22.3%	-12.4%	5.8%
	% Point Difference (actual - benchmark)	-51.2%	-48.3%	-42.6%	-28.3%	-24.2%	-45.0%	-42.1%

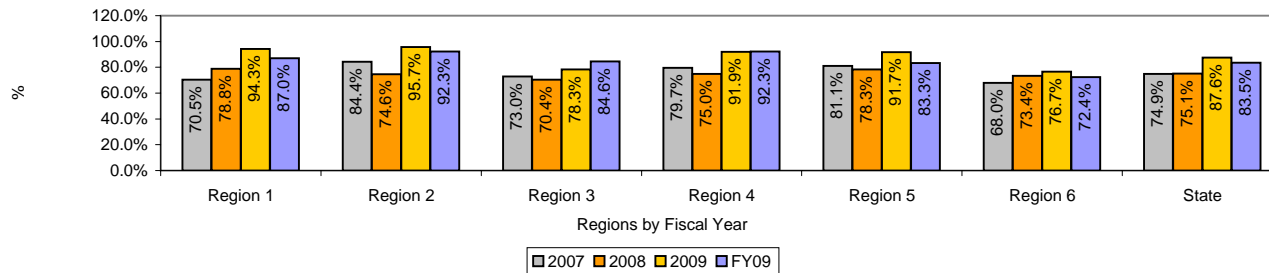
Measure Description:
Source: Foster Parent Survey.



Report FY	Measure	Region 1	Region 2	Region 3	Region 4	Region 5	Region 6	State
2006	Actual Performance							
	Baseline							
	Actual % Change from Prior Yr							
	% Point Difference (actual - benchmark)							
2007	Actual Performance (CY06)	70.5%	84.4%	73.0%	79.7%	81.1%	68.0%	74.9%
	Baseline							
	Actual % Change from Prior Yr	na	na	na	na	na	na	na
	% Point Difference (actual - benchmark)	na	na	na	na	na	na	na
2008	Actual Performance (CY07)	78.8%	74.6%	70.4%	75.0%	78.3%	73.4%	75.1%
	Benchmark	85.0%	85.0%	85.0%	85.0%	85.0%	85.0%	85.0%
	Actual % Change from Prior Yr	11.8%	-11.6%	-3.6%	-5.9%	-3.5%	7.9%	0.3%
	% Point Difference (actual - benchmark)	-6.2%	-10.4%	-14.6%	-10.0%	-6.7%	-11.6%	-9.9%
2009	Actual Performance (CY08)	94.3%	95.7%	78.3%	91.9%	91.7%	76.7%	87.6%
	Benchmark	90.0%	90.0%	90.0%	90.0%	90.0%	90.0%	90.0%
	Actual % Change from Prior Yr	19.7%	28.3%	11.2%	22.5%	17.1%	4.5%	16.6%
	% Point Difference (actual - benchmark)	4.3%	5.7%	-11.7%	1.9%	1.7%	-13.3%	-2.4%
FY09	Actual Performance (FY09)	87.0%	92.3%	84.6%	92.3%	83.3%	72.4%	83.5%
	Benchmark	90.0%	90.0%	90.0%	90.0%	90.0%	90.0%	90.0%
	Actual % Change from Prior Yr	-7.7%	-3.6%	8.0%	0.4%	-9.2%	-5.6%	-4.7%
	% Point Difference (actual - benchmark)	-3.0%	2.3%	-5.4%	2.3%	-6.7%	-17.6%	-6.5%

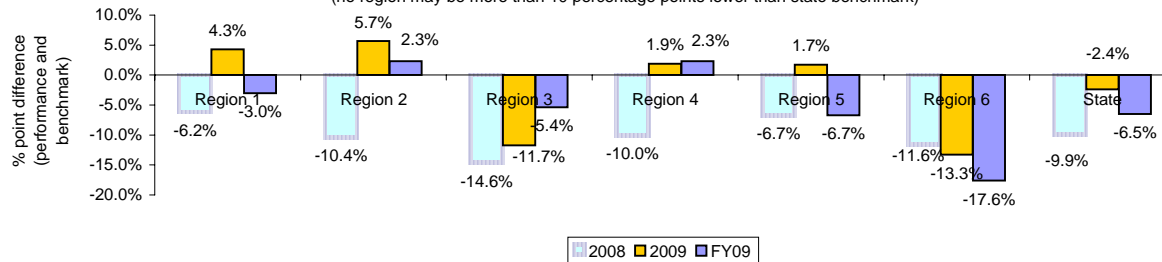
Measure Description:
Source: Foster Parent Survey.

Percent Reporting Adequate Care for Medically Fragile Children



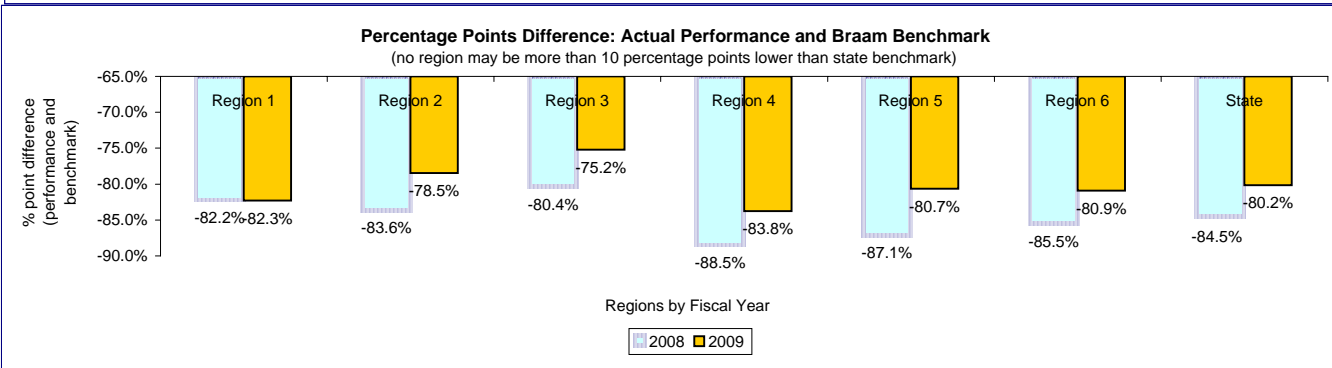
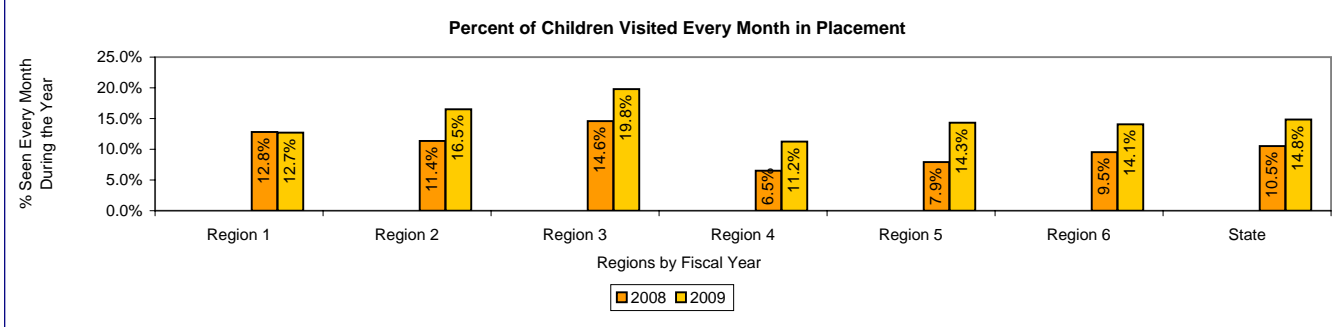
Percentage Points Difference: Actual Performance and Braam Benchmark

(no region may be more than 10 percentage points lower than state benchmark)



Report FY	Measure	Region 1	Region 2	Region 3	Region 4	Region 5	Region 6	State
2005	Actual Performance							
	Baseline							
	Actual % Change from Prior Yr % Point Difference (actual - benchmark)							
2006	Actual Performance							
	Baseline							
	Actual % Change from Prior Yr % Point Difference (actual - benchmark)							
2007	Actual Performance							
	Benchmark							
	Actual % Change from Prior Yr % Point Difference (actual - benchmark)							
2008	Actual Performance	12.8%	11.4%	14.6%	6.5%	7.9%	9.5%	10.5%
	Benchmark	95.0%	95.0%	95.0%	95.0%	95.0%	95.0%	95.0%
	Actual % Change from Prior Yr	n/a	n/a	n/a	n/a	n/a	n/a	n/a
	% Point Difference (actual - benchmark)	-82.2%	-83.6%	-80.4%	-88.5%	-87.1%	-85.5%	-84.5%
2009	Actual Performance	12.7%	16.5%	19.8%	11.2%	14.3%	14.1%	14.8%
	Benchmark	95.0%	95.0%	95.0%	95.0%	95.0%	95.0%	95.0%
	Actual % Change from Prior Yr	-0.8%	45.2%	35.5%	72.6%	81.3%	48.0%	41.1%
	% Point Difference (actual - benchmark)	-82.3%	-78.5%	-75.2%	-83.8%	-80.7%	-80.9%	-80.2%

Measure Description:
 Source: FamLink placement and case not activity records. Percent of children who received a health and safety visit each and every month they were in care for a full month during the FY. Estimate based on logic that emulates federal requirements. In September 2008 of FY09, Children's Administration implemented a policy requiring visits with children every calendar month with no longer than 40 days between health and safety visits. As this measure evaluates if youth received a visit every calendar month they were in placement over the entire fiscal year, it is not anticipated that Children's Administration will achieve a significant increase in this measure until FY2010. Information on the proportion of children visited in a single month is also provided to the Panel throughout the year.



Report FY	Measure	Region 1	Region 2	Region 3	Region 4	Region 5	Region 6	State
2005 (FFY04)	Actual Performance Baseline Actual % Change from Prior Yr % Point Difference (actual - benchmark)	No Regional Break-outs						99.64%
2006 (FFY05)	Actual Performance Baseline Actual % Change from Prior Yr % Point Difference (actual - benchmark)	No Regional Break-outs						99.73%
2007 (FFY06)	Actual Performance Benchmark Actual % Change from Prior Yr % Point Difference (actual - benchmark)	No Regional Break-outs						99.57% 99.7% -0.11%
2008 (FFY07)	Actual Performance Benchmark Actual % Change from Prior Yr % Point Difference (actual - benchmark)	No Regional Break-outs						99.77% 99.68% n/a 0.09%
2009 (FFY08)	Actual Performance Benchmark Actual % Change from Prior Yr % Point Difference (actual - benchmark)	No Regional Break-outs						99.62% 99.68% n/a -0.06%

Measure Description:

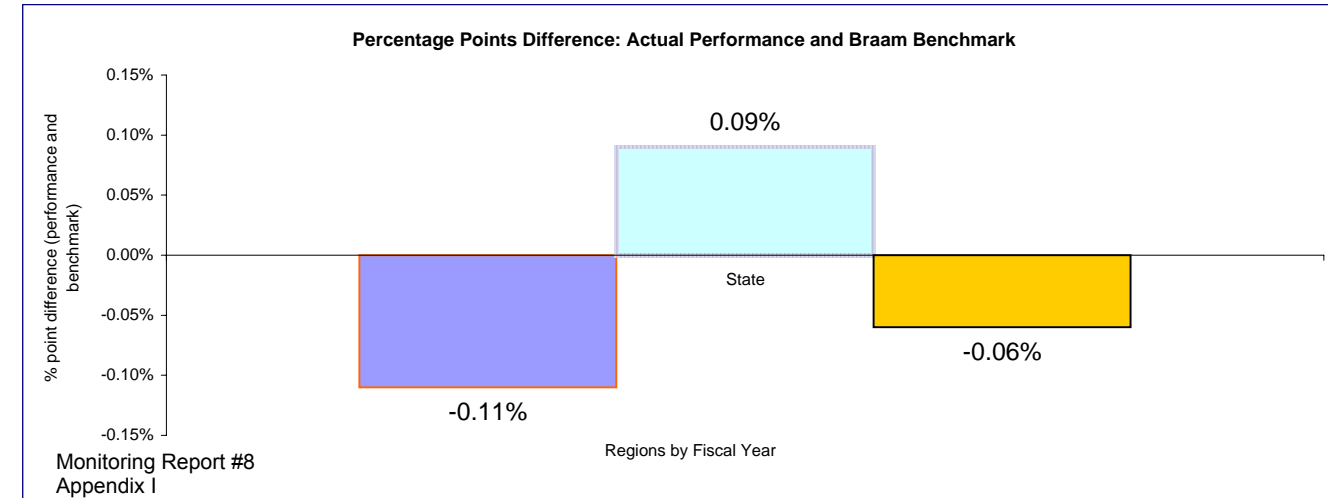
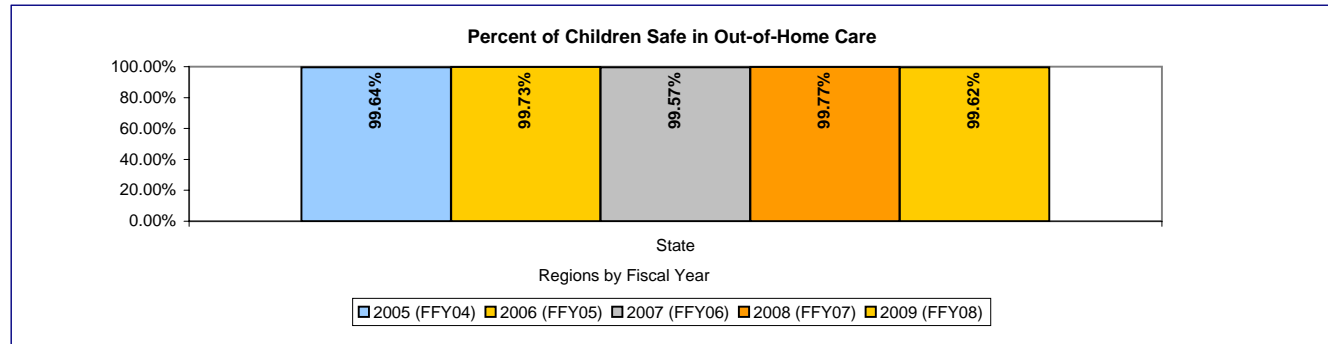
Source: ACF. Calculated measure based on administrative data submission. Regional statistics are not provided to States.

The national standard is 99.68% or more. The national median = 99.5, and the 25th percentile = 99.30

Measure Definition: The percentage of children who are not victims of a founded report of child abuse or neglect by a foster parent or facility staff member will meet or exceed the federal Child and Family Services Review standard.

This data element is used to determine the State's conformity with CFPSR Safety Outcome #1 ("Children are, first and foremost, protected from abuse and neglect"): Of all children in foster care during the reporting period, what percent were not victims of substantiated or indicated maltreatment by foster parent or facility staff member. Counts of children not maltreated in foster care are derived by subtracting NCANDS count of children maltreated by foster care providers (as determined by reports of child abuse or neglect founded after investigation by DLR/CPS) from AFCARS count of children placed in foster care. The observation period for this measure is 12 months. The number of children not found to be maltreated in foster care and the percentage of all children in foster care are provided.

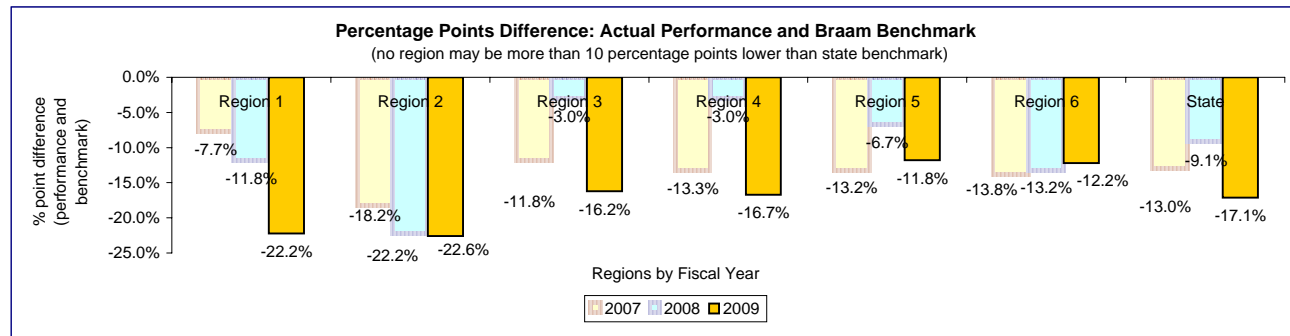
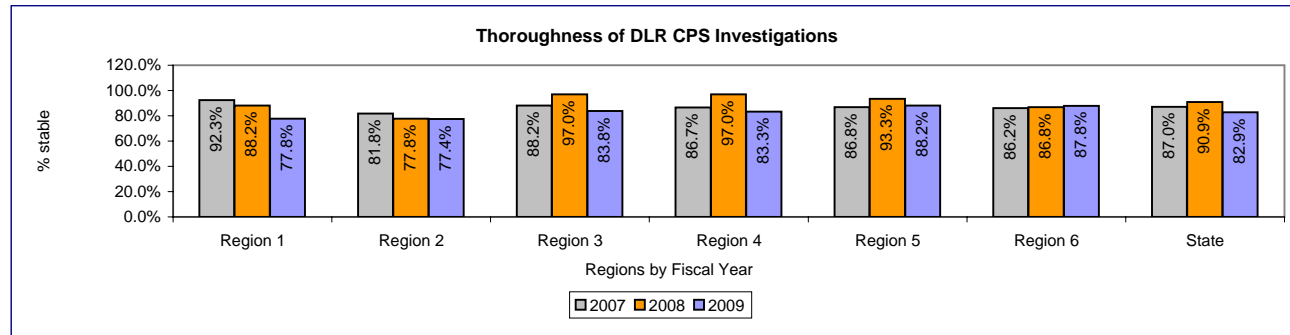
In FY2008, 17,175 out of 17,215 children were safe per this standard. 40 children were the victims of a founded report of child abuse and neglect. In FY2009, 17,197 out of 17,263 children were safe. 66 children were the victims of a founded report of child abuse and neglect.



Report FY	Measure	Region 1	Region 2	Region 3	Region 4	Region 5	Region 6	State	
2005	Actual Performance	% thorough							
	Baseline								
	Actual % Change from Prior Yr % Point Difference (actual - benchmark)								
2006	Actual Performance	% thorough							
	Baseline								
	Actual % Change from Prior Yr % Point Difference (actual - benchmark)								
2007	Actual Performance	% thorough	92.3%	81.8%	88.2%	86.7%	86.8%	86.2%	87.0%
	Benchmark		100.0%	100.0%	100.0%	100.0%	100.0%	100.0%	100.0%
	Actual % Change from Prior Yr % Point Difference (actual - benchmark)		-7.7%	-18.2%	-11.8%	-13.3%	-13.2%	-13.8%	-13.0%
2008	Actual Performance	% thorough	88.2%	77.8%	97.0%	97.0%	93.3%	86.8%	90.9%
	Benchmark		100.0%	100.0%	100.0%	100.0%	100.0%	100.0%	100.0%
	Actual % Change from Prior Yr % Point Difference (actual - benchmark)		-11.8%	-22.2%	-3.0%	-3.0%	-6.7%	-13.2%	-9.1%
2009	Actual Performance	% thorough	77.8%	77.4%	83.8%	83.3%	88.2%	87.8%	82.9%
	Benchmark		100.0%	100.0%	100.0%	100.0%	100.0%	100.0%	100.0%
	Actual % Change from Prior Yr % Point Difference (actual - benchmark)		-22.2%	-22.6%	-16.2%	-16.7%	-11.8%	-12.2%	-17.1%

Measure Description:

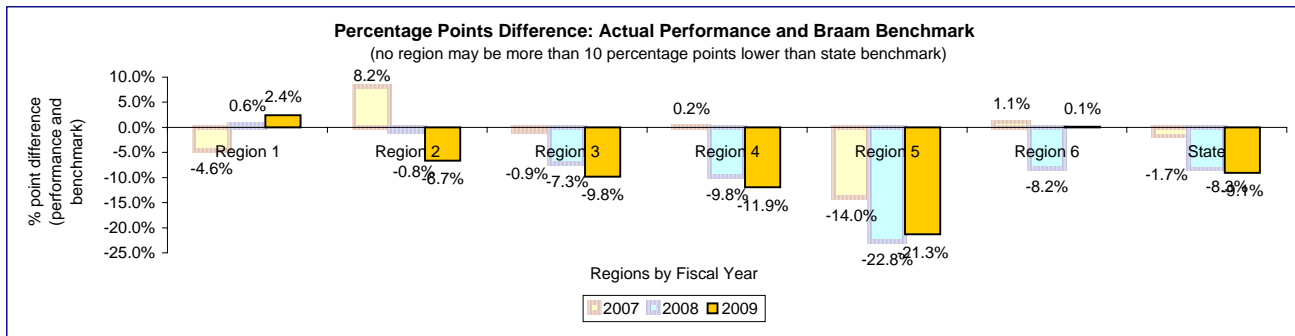
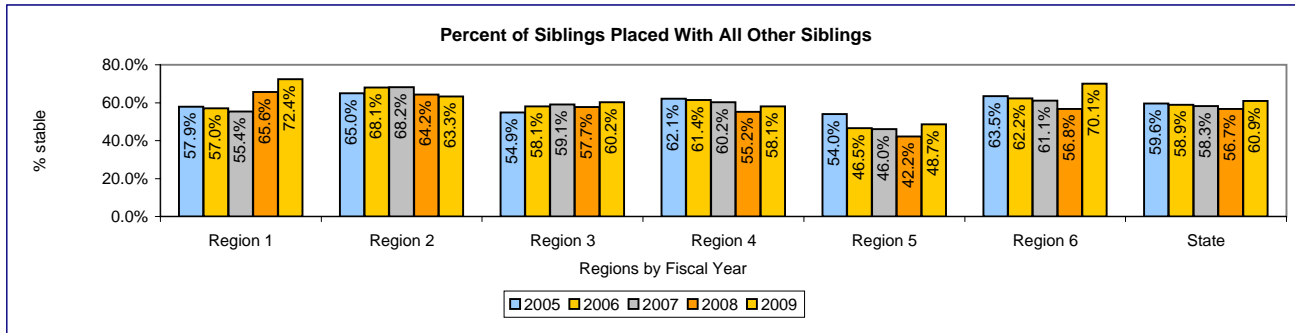
Source: CA case review
 Note that case review methodology changed for 2009 data. Additional questions were added to the case review to assess timeliness of DLR/ CPS investigations.



Report FY	Measure	Region 1	Region 2	Region 3	Region 4	Region 5	Region 6	State	
2005	Actual Performance	% all together	57.9%	65.0%	54.9%	62.1%	54.0%	63.5%	59.6%
	Baseline		0.0%	0.0%	0.0%	0.0%	0.0%	0.0%	0.0%
	Actual % Change from Prior Yr		0.0%	0.0%	0.0%	0.0%	0.0%	0.0%	0.0%
	% Point Difference (actual - benchmark)		na	na	na	na	na	na	na
2006	Actual Performance	% all together	57.0%	68.1%	58.1%	61.4%	46.5%	62.2%	58.9%
	Baseline		0.0%	0.0%	0.0%	0.0%	0.0%	0.0%	0.0%
	Actual % Change from Prior Yr		-1.6%	4.8%	5.8%	-1.1%	-13.9%	-2.0%	-1.2%
	% Point Difference (actual - benchmark)		0.0%	0.0%	0.0%	0.0%	0.0%	0.0%	0.0%
2007	Actual Performance	% all together	55.4%	68.2%	59.1%	60.2%	46.0%	61.1%	58.3%
	Benchmark		60.0%	60.0%	60.0%	60.0%	60.0%	60.0%	60.0%
	Actual % Change from Prior Yr		-2.8%	0.1%	1.7%	-2.0%	-1.1%	-1.8%	-1.0%
	% Point Difference (actual - benchmark)		-4.6%	8.2%	-0.9%	0.2%	-14.0%	1.1%	-1.7%
2008	Actual Performance	% all together	65.6%	64.2%	57.7%	55.2%	42.2%	56.8%	56.7%
	Benchmark		65.0%	65.0%	65.0%	65.0%	65.0%	65.0%	65.0%
	Actual % Change from Prior Yr		18.5%	-5.8%	-2.3%	-8.4%	-8.2%	-7.1%	-2.8%
	% Point Difference (actual - benchmark)		0.6%	-0.8%	-7.3%	-9.8%	-22.8%	-8.2%	-8.3%
2009	Actual Performance	% all together	72.4%	63.3%	60.2%	58.1%	48.7%	70.1%	60.9%
	Benchmark		70.0%	70.0%	70.0%	70.0%	70.0%	70.0%	70.0%
	Actual % Change from Prior Yr		10.3%	-1.4%	4.3%	5.3%	15.3%	23.5%	7.5%
	% Point Difference (actual - benchmark)		2.4%	-6.7%	-9.8%	-11.9%	-21.3%	0.1%	-9.1%

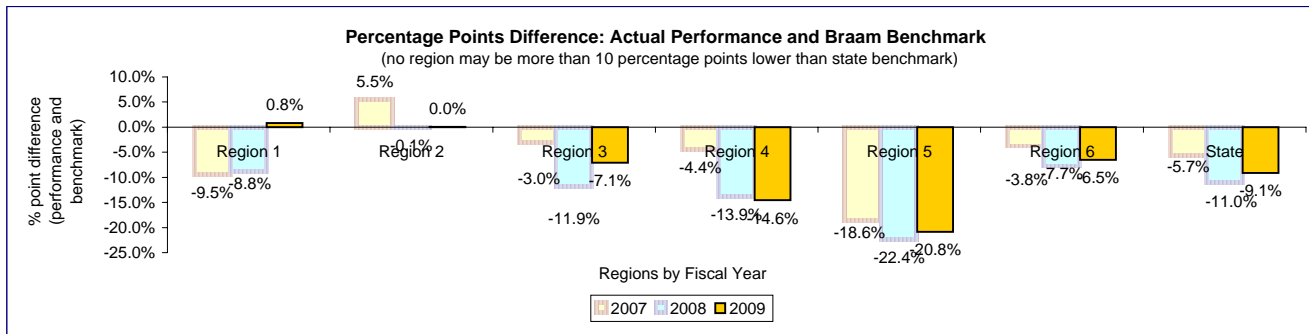
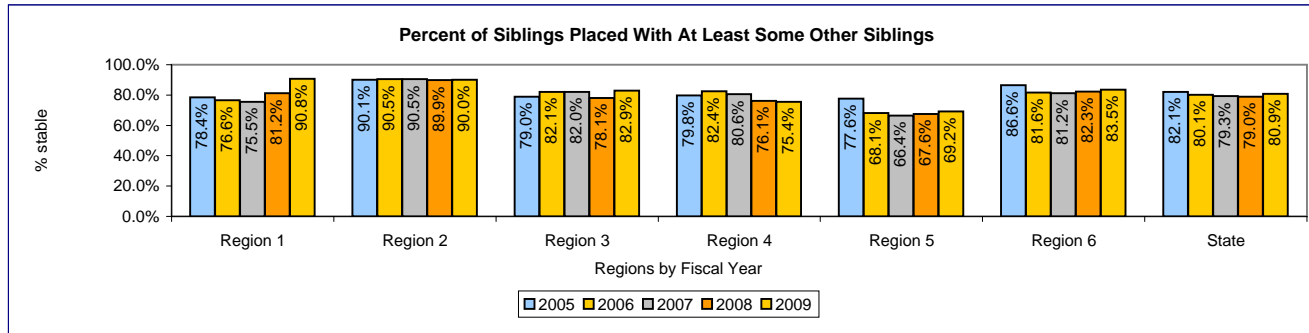
Measure Description:

Source: Famlink placement records using the same proxy method to identify sibling groups that has been used with CAMIS data due to absence of adequate relationship information for children with only conversion records in Famlink. Children must be removed within 7 days of each other, share a common case id, be initially placed in a family type home and remain in out-of-home care for at least 30 days to be included in this population. Unlike CAMIS measure data, FY09 results exclude children who were removed and received BRS services in the foster home.



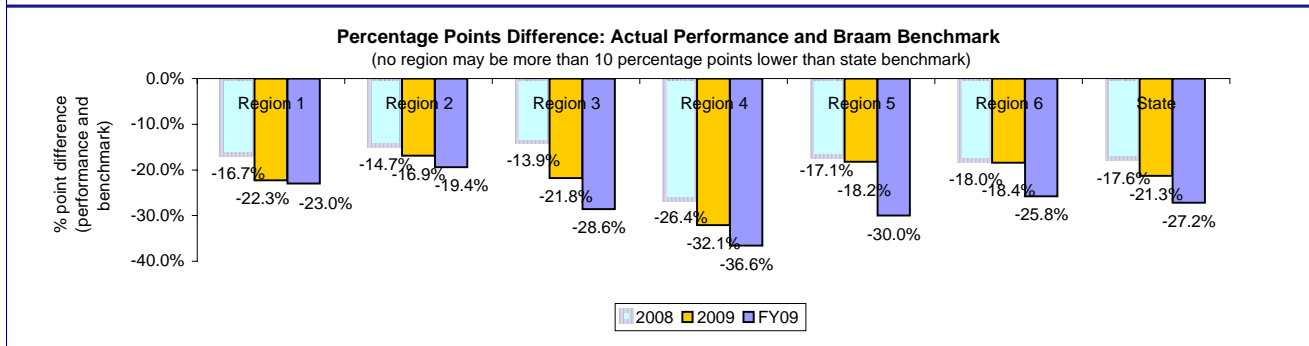
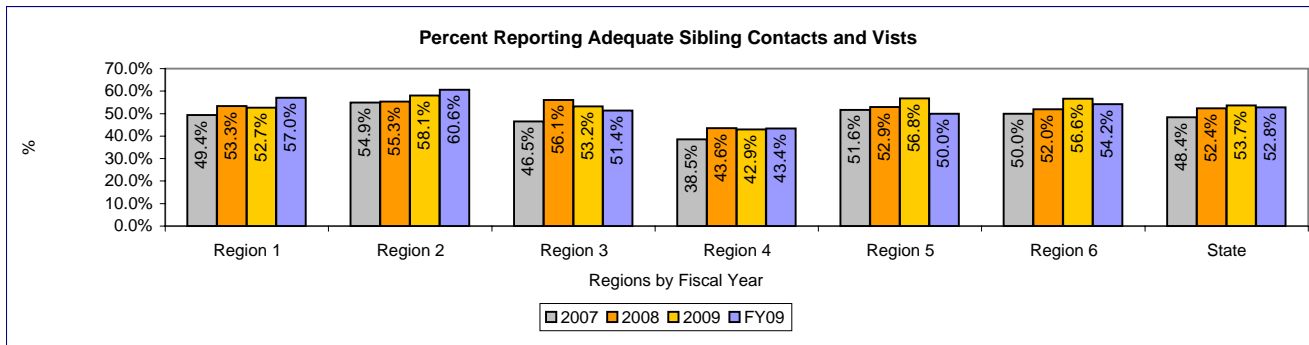
Report FY	Measure	Region 1	Region 2	Region 3	Region 4	Region 5	Region 6	State
2005	Actual Performance	78.4%	90.1%	79.0%	79.8%	77.6%	86.6%	82.1%
	Baseline	0.0%	0.0%	0.0%	0.0%	0.0%	0.0%	0.0%
	Actual % Change from Prior Yr	0.0%	0.0%	0.0%	0.0%	0.0%	0.0%	0.0%
	% Point Difference (actual - benchmark)	na	na	na	na	na	na	na
2006	Actual Performance	76.6%	90.5%	82.1%	82.4%	68.1%	81.6%	80.1%
	Baseline	0.0%	0.0%	0.0%	0.0%	0.0%	0.0%	0.0%
	Actual % Change from Prior Yr	-2.3%	0.4%	3.9%	3.3%	-12.2%	-5.8%	-2.4%
	% Point Difference (actual - benchmark)	0.0%	0.0%	0.0%	0.0%	0.0%	0.0%	0.0%
2007	Actual Performance	75.5%	90.5%	82.0%	80.6%	66.4%	81.2%	79.3%
	Benchmark	85.0%	85.0%	85.0%	85.0%	85.0%	85.0%	85.0%
	Actual % Change from Prior Yr	-1.4%	0.0%	-0.1%	-2.2%	-2.5%	-0.5%	-1.0%
	% Point Difference (actual - benchmark)	-9.5%	5.5%	-3.0%	-4.4%	-18.6%	-3.8%	-5.7%
2008	Actual Performance	81.2%	89.9%	78.1%	76.1%	67.6%	82.3%	79.0%
	Benchmark	90.0%	90.0%	90.0%	90.0%	90.0%	90.0%	90.0%
	Actual % Change from Prior Yr	7.5%	-0.6%	-4.7%	-5.5%	1.7%	1.4%	-0.4%
	% Point Difference (actual - benchmark)	-8.8%	-0.1%	-11.9%	-13.9%	-22.4%	-7.7%	-11.0%
2009	Actual Performance	90.8%	90.0%	82.9%	75.4%	69.2%	83.5%	80.9%
	Benchmark	90.0%	90.0%	90.0%	90.0%	90.0%	90.0%	90.0%
	Actual % Change from Prior Yr	11.9%	0.1%	6.2%	-0.9%	2.4%	1.5%	2.5%
	% Point Difference (actual - benchmark)	0.8%	0.0%	-7.1%	-14.6%	-20.8%	-6.5%	-9.1%

Measure Description:
 Source: Famlink placement records using the same proxy method to identify sibling groups that has been used with CAMIS data due to absence of adequate relationship information for children with only conversion records in Famlink. Children must be removed within 7 days of each other, share a common case id, be initially placed in a family type home and remain in out-of-home care for at least 30 days to be included in this population. Unlike CAMIS measure data, FY09 results exclude children who were removed and received BRS services in the foster home.



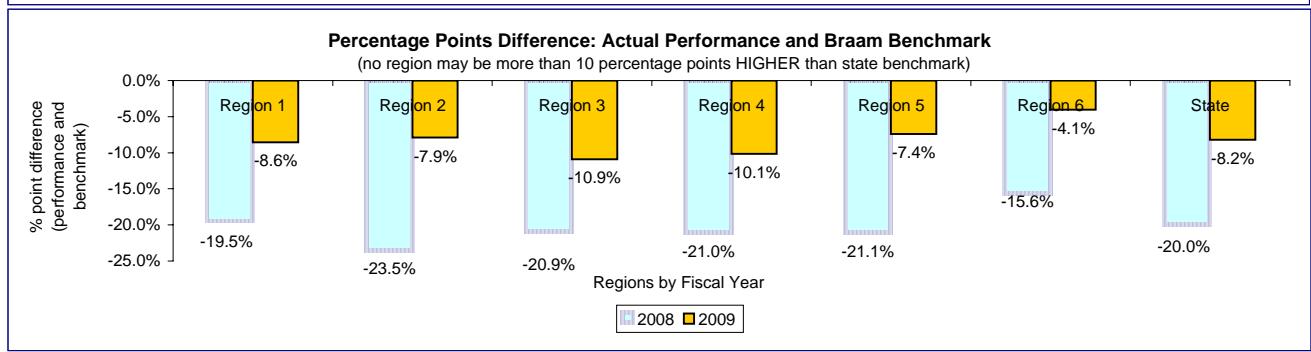
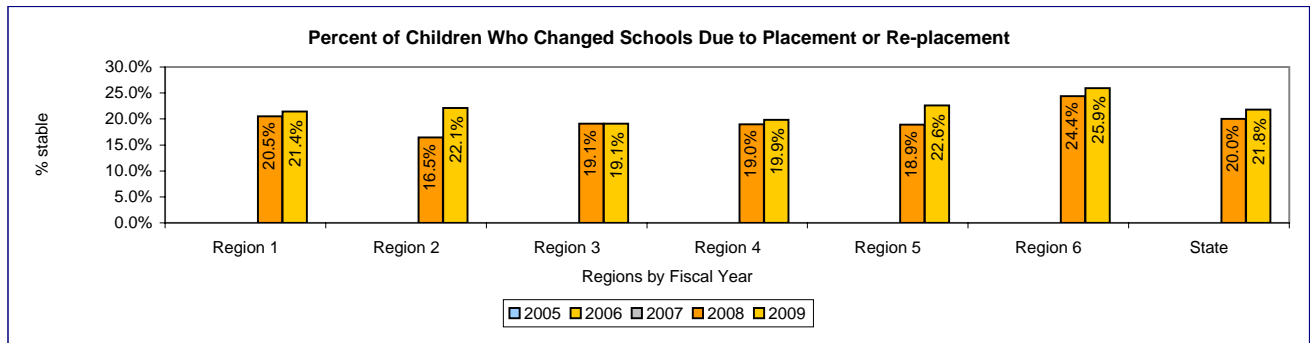
Report FY	Measure	Region 1	Region 2	Region 3	Region 4	Region 5	Region 6	State
2006	Actual Performance Baseline							
	Actual % Change from Prior Yr							
	% Point Difference (actual - benchmark)							
2007	Actual Performance (CY06) Baseline	49.4%	54.9%	46.5%	38.5%	51.6%	50.0%	48.4%
	Actual % Change from Prior Yr	na	na	na	na	na	na	na
	% Point Difference (actual - benchmark)	na	na	na	na	na	na	na
2008	Actual Performance (CY07) Benchmark	53.3%	55.3%	56.1%	43.6%	52.9%	52.0%	52.4%
	Actual % Change from Prior Yr	7.9%	0.7%	20.6%	13.2%	2.5%	4.0%	8.3%
	% Point Difference (actual - benchmark)	-16.7%	-14.7%	-13.9%	-26.4%	-17.1%	-18.0%	-17.6%
2009	Actual Performance (CY08) Benchmark	52.7%	58.1%	53.2%	42.9%	56.8%	56.6%	53.7%
	Actual % Change from Prior Yr	-1.1%	5.1%	-5.2%	-1.6%	7.4%	8.8%	2.5%
	% Point Difference (actual - benchmark)	-22.3%	-16.9%	-21.8%	-32.1%	-18.2%	-18.4%	-21.3%
FY09	Actual Performance (FY09) Benchmark	57.0%	60.6%	51.4%	43.4%	50.0%	54.2%	52.8%
	Actual % Change from Prior Yr	8.2%	4.3%	-3.4%	1.2%	-12.0%	-4.2%	-1.7%
	% Point Difference (actual - benchmark)	-23.0%	-19.4%	-28.6%	-36.6%	-30.0%	-25.8%	-27.2%

Measure Description:
 Source: Foster Parent Survey. Children's Administration implemented a policy requiring the provision of two visits or contats between siblings per month in September 2008. This was possible after the Legislature provided funds to contract for this service. Measurement of the actual numbers of visits and contacts is not possible until CA implements the new management information system, FamLink.



Report FY	Measure	Region 1	Region 2	Region 3	Region 4	Region 5	Region 6	State
2005	Actual Performance							
	Baseline							
	Actual % Change from Prior Yr % Point Difference (actual - benchmark)							
2006	Actual Performance							
	Baseline							
	Actual % Change from Prior Yr % Point Difference (actual - benchmark)							
2007	Actual Performance							
	Benchmark							
	Actual % Change from Prior Yr % Point Difference (actual - benchmark)							
2008	Actual Performance (0607 SY)	20.5%	16.5%	19.1%	19.0%	18.9%	24.4%	20.0%
	Benchmark	40.0%	40.0%	40.0%	40.0%	40.0%	40.0%	40.0%
	Actual % Change from Prior Yr	n/a	n/a	n/a	n/a	n/a	n/a	n/a
	% Point Difference (actual - benchmark)	-19.5%	-23.5%	-20.9%	-21.0%	-21.1%	-15.6%	-20.0%
2009	Actual Performance (0708 SY)	21.4%	22.1%	19.1%	19.9%	22.6%	25.9%	21.8%
	Benchmark	30.0%	30.0%	30.0%	30.0%	30.0%	30.0%	30.0%
	Actual % Change from Prior Yr	4.3%	34.3%	0.1%	4.7%	19.5%	6.5%	9.0%
	% Point Difference (actual - benchmark)	-8.6%	-7.9%	-10.9%	-10.1%	-7.4%	-4.1%	-8.2%

Measure Description:
 Source: OSPI de-identified enrollment records.
 CHANGE IN PERFORMANCE FOR FY09 IS RELATED A SMALL BUT INCREASED LIKELIHOOD OF A SCHOOL CHANGE AT REMOVAL FOR YOUTH PLACED DURING THE SCHOOL YEAR. SCHOOL STABILITY FOR YOUTH WHO WERE REMOVED PRIOR TO THE SCHOOL YEAR WAS UNCHANGED.

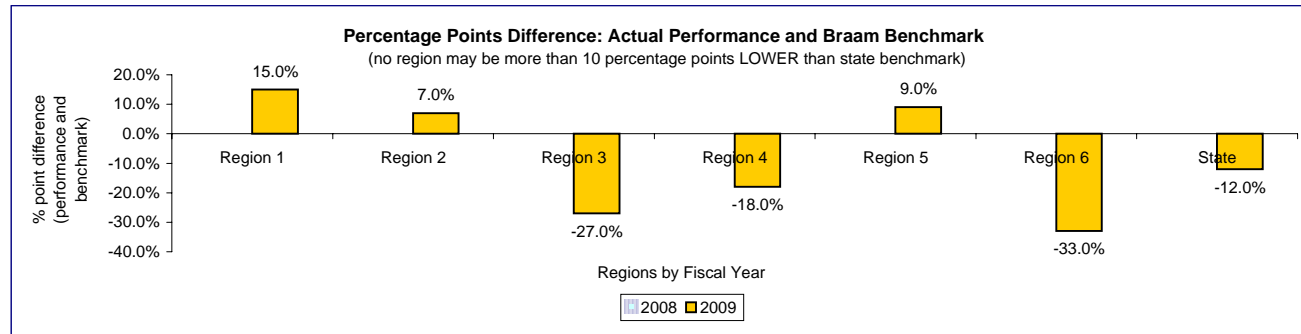
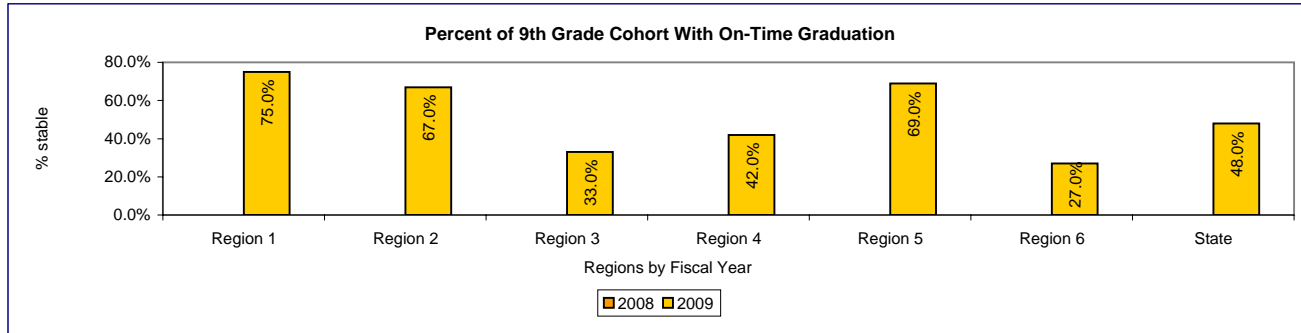


Graduation

Report FY	Measure	Region 1	Region 2	Region 3	Region 4	Region 5	Region 6	State
2005	Actual Performance							
	Baseline							
	Actual % Change from Prior Yr % Point Difference (actual - benchmark)							
2006	Actual Performance							
	Baseline							
	Actual % Change from Prior Yr % Point Difference (actual - benchmark)							
2007	Actual Performance							
	Benchmark							
	Actual % Change from Prior Yr % Point Difference (actual - benchmark)							
2008	Actual Performance (0607 SY)							
	Benchmark							
	Actual % Change from Prior Yr % Point Difference (actual - benchmark)							
2009	Actual Performance (0708 SY)	75.0%	67.0%	33.0%	42.0%	69.0%	27.0%	48.0%
	Benchmark	60.0%	60.0%	60.0%	60.0%	60.0%	60.0%	60.0%
	Actual % Change from Prior Yr							
	% Point Difference (actual - benchmark)	15.0%	7.0%	-27.0%	-18.0%	9.0%	-33.0%	-12.0%

Measure Description:

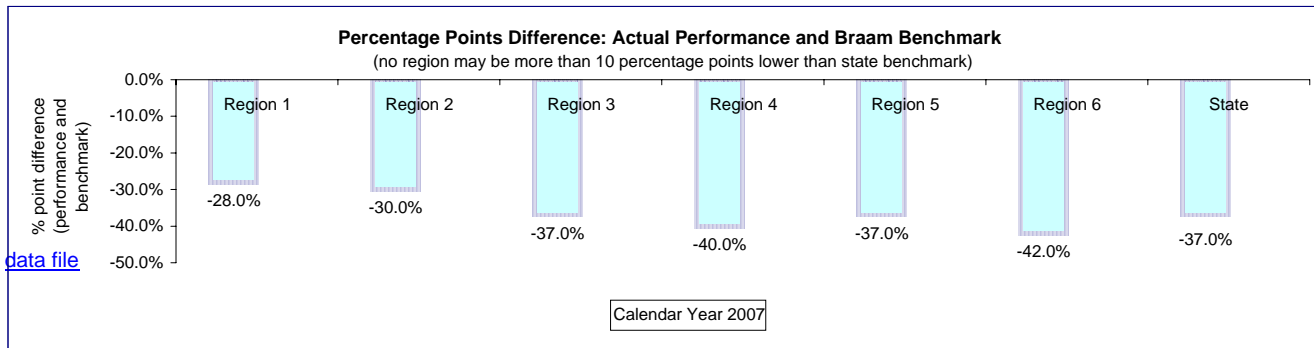
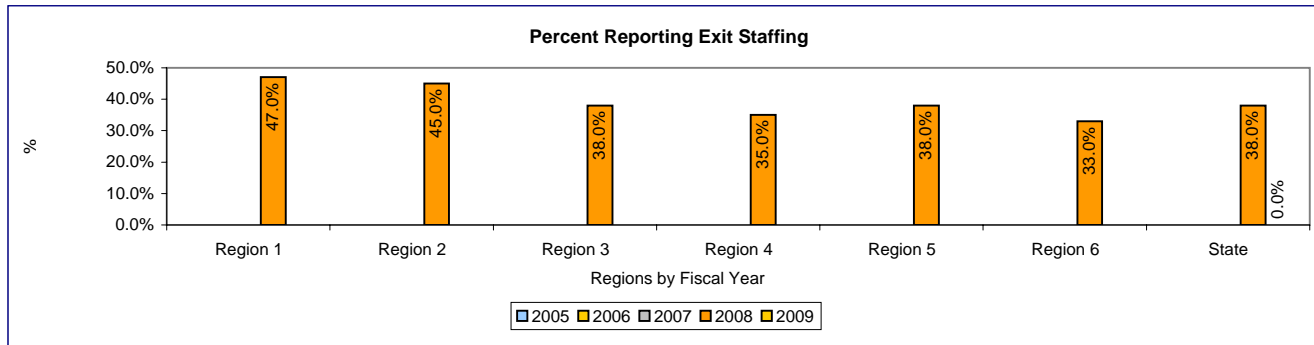
Source: WSIPP Report. Raw numbers are available in WSIPP report, accessible at www.wsipp.wa.gov



Report FY	Measure	Region 1	Region 2	Region 3	Region 4	Region 5	Region 6	State
2005	Actual Performance							
	Baseline							
	Actual % Change from Prior Yr % Point Difference (actual - benchmark)							
2006	Actual Performance							
	Baseline							
	Actual % Change from Prior Yr % Point Difference (actual - benchmark)							
2007	Actual Performance (CY06)							
	Baseline							
	Actual % Change from Prior Yr % Point Difference (actual - benchmark)							
2008	Actual Performance (CY07)	47.0%	45.0%	38.0%	35.0%	38.0%	33.0%	38.0%
	Benchmark	75.0%	75.0%	75.0%	75.0%	75.0%	75.0%	75.0%
	Actual % Change from Prior Yr % Point Difference (actual - benchmark)	n/a -28.0%	n/a -30.0%	n/a -37.0%	n/a -40.0%	n/a -37.0%	n/a -42.0%	n/a -37.0%
2009	Actual Performance (FY09)							<1%
	Benchmark							75.0%
	Actual % Change from Prior Yr % Point Difference (actual - benchmark)							

Measure Description:
 Source: FamLink placement records. Famlink data include only 5 transitional staffings for youth who exited care during FY09, 3 within 180 days of exit. These data were not available in CAMIS and are now being entered in FamLink for SFY10 as of FamLink implementation on 2/1/2009.

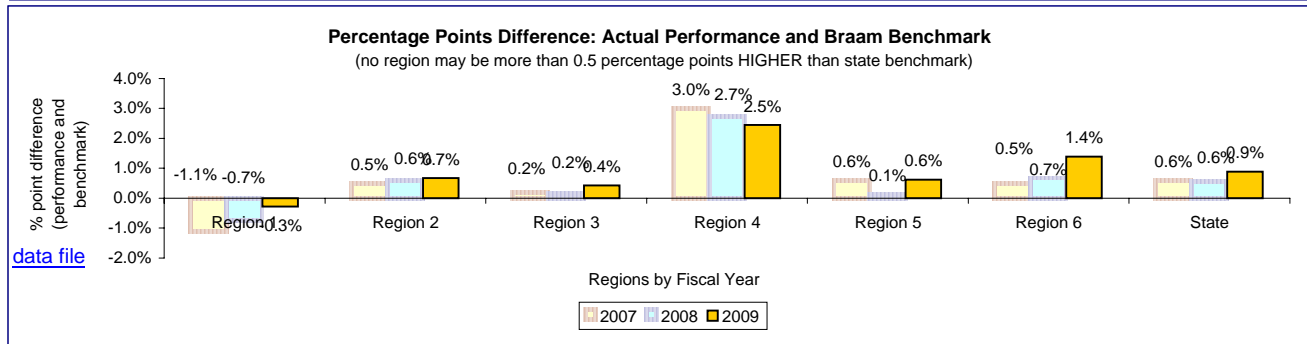
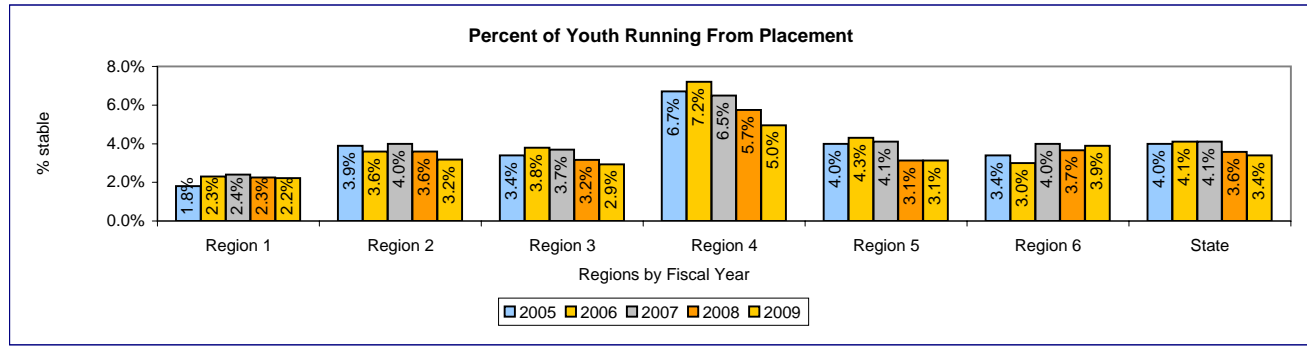
Current data are not suitable for compliance evaluation.



[data file](#)

Report FY	Measure	Region 1	Region 2	Region 3	Region 4	Region 5	Region 6	State
2005	Actual Performance	1.8%	3.9%	3.4%	6.7%	4.0%	3.4%	4.0%
	Baseline	0.0%	0.0%	0.0%	0.0%	0.0%	0.0%	0.0%
	Actual % Change from Prior Yr	0.0%	0.0%	0.0%	0.0%	0.0%	0.0%	0.0%
% Point Difference (actual - benchmark)		na	na	na	na	na	na	na
2006	Actual Performance	2.3%	3.6%	3.8%	7.2%	4.3%	3.0%	4.1%
	Benchmark	4.0%	4.0%	4.0%	4.0%	4.0%	4.0%	4.0%
	Actual % Change from Prior Yr	27.8%	-7.7%	11.8%	7.5%	7.5%	-11.8%	2.5%
% Point Difference (actual - benchmark)		-1.7%	-0.4%	-0.2%	3.2%	0.3%	-1.0%	0.1%
2007	Actual Performance	2.4%	4.0%	3.7%	6.5%	4.1%	4.0%	4.1%
	Benchmark	3.5%	3.5%	3.5%	3.5%	3.5%	3.5%	3.5%
	Actual % Change from Prior Yr	4.3%	11.1%	-2.6%	-9.7%	-4.7%	33.3%	0.0%
% Point Difference (actual - benchmark)		-1.1%	0.5%	0.2%	3.0%	0.6%	0.5%	0.6%
2008	Actual Performance	2.3%	3.6%	3.2%	5.7%	3.1%	3.7%	3.6%
	Benchmark	3.0%	3.0%	3.0%	3.0%	3.0%	3.0%	3.0%
	Actual % Change from Prior Yr	-6.2%	-10.3%	-14.5%	-11.7%	-23.8%	-8.3%	-12.9%
% Point Difference (actual - benchmark)		-0.7%	0.6%	0.2%	2.7%	0.1%	0.7%	0.6%
2009	Actual Performance	2.2%	3.2%	2.9%	5.0%	3.1%	3.9%	3.4%
	Benchmark	2.5%	2.5%	2.5%	2.5%	2.5%	2.5%	2.5%
	Actual % Change from Prior Yr	-1.4%	-11.5%	-7.5%	-13.8%	-0.1%	6.1%	-5.1%
% Point Difference (actual - benchmark)		-0.3%	0.7%	0.4%	2.5%	0.6%	1.4%	0.9%

Measure Description:
 Source: FamLink placement records. The percent of all children in the Department's custody in out-of-home care during the FY who ran during the fiscal year.



[data file](#)

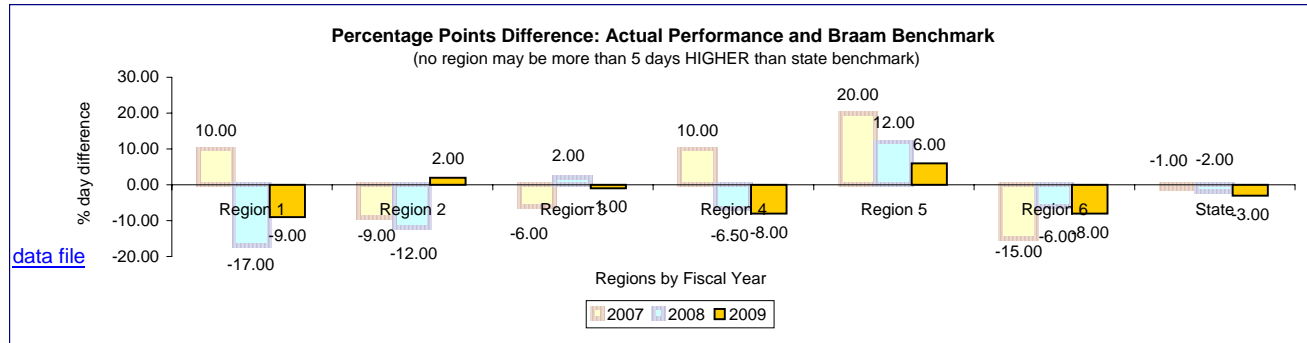
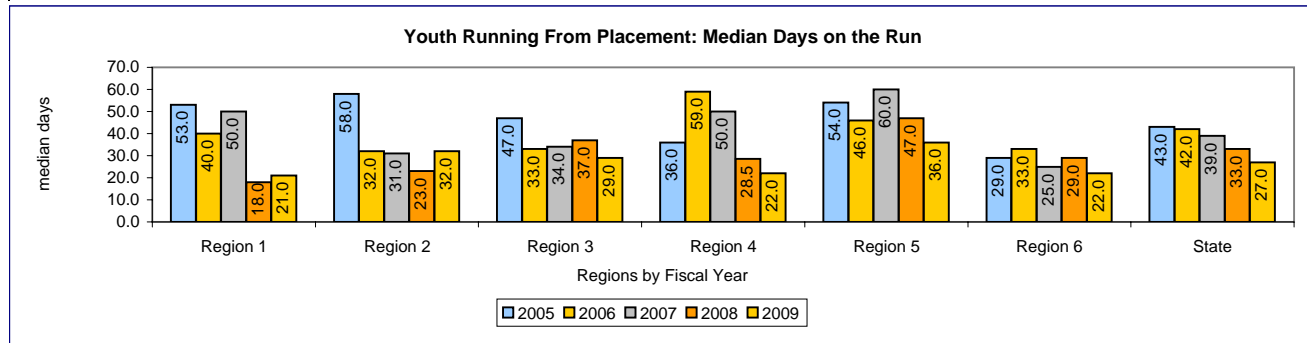
Report FY	Measure	Region 1	Region 2	Region 3	Region 4	Region 5	Region 6	State
2005	Actual Performance	53.0	58.0	47.0	36.0	54.0	29.0	43.0
	Baseline	0.0%	0.0%	0.0%	0.0%	0.0%	0.0%	0.0%
	Actual % Change from Prior Yr	0.0%	0.0%	0.0%	0.0%	0.0%	0.0%	0.0%
	Difference (actual - benchmark)	na	na	na	na	na	na	na
2006	Actual Performance	40.0	32.0	33.0	59.0	46.0	33.0	42.0
	Benchmark	45.0	45.0	45.0	45.0	45.0	45.0	45.0
	Actual % Change from Prior Yr	-24.5%	-44.8%	-29.8%	63.9%	-14.8%	13.8%	-2.3%
	Difference (actual - benchmark)	-5.00	-13.00	-12.00	14.00	1.00	-12.00	-3.00
2007	Actual Performance	50.0	31.0	34.0	50.0	60.0	25.0	39.0
	Benchmark	40.0	40.0	40.0	40.0	40.0	40.0	40.0
	Actual % Change from Prior Yr	25.0%	-3.1%	3.0%	-15.3%	30.4%	-24.2%	-7.1%
	Difference (actual - benchmark)	10.00	-9.00	-6.00	10.00	20.00	-15.00	-1.00
2008	Actual Performance	18.0	23.0	37.0	28.5	47.0	29.0	33.0
	Benchmark	35.0	35.0	35.0	35.0	35.0	35.0	35.0
	Actual % Change from Prior Yr	-64.0%	-25.8%	8.8%	-43.0%	-21.7%	16.0%	-15.4%
	Difference (actual - benchmark)	-17.00	-12.00	2.00	-6.50	12.00	-6.00	-2.00
2009	Actual Performance	21.0	32.0	29.0	22.0	36.0	22.0	27.0
	Benchmark	30.0	30.0	30.0	30.0	30.0	30.0	30.0
	Actual % Change from Prior Yr	16.7%	39.1%	-21.6%	-22.8%	-23.4%	-24.1%	-18.2%
	Difference (actual - benchmark)	-9.00	2.00	-1.00	-8.00	6.00	-8.00	-3.00

Measure Description:

Source: FamLink placement records. The percent of all children in the Department's custody in out-of-home care on the last day of the FY who ran during the fiscal year - median time in run events.

The decline in median length of time on the run may be related to changes in FamLink placement records compared to CAMIS. This change may reflect the clean-up of placement records that occurred prior to and during FamLink implementation.

Many placements that appeared to be open in CAMIS were corrected and closed for conversion to FamLink. Long run events associated with these placements no longer appear in the measure data.



[data file](#)