

APPENDIX III
Monitoring Report #6—March 2009

Children's Administration- Informational Reports

Duplicated Counts of Licensed Foster Homes and Bed Capacity by Age Group

FY08 Bed Ratio by Month and Age Group

End of Month	<2	2-5	6-12	>12
Jul07	3.3	2.5	2.1	1.4
Aug07	3.1	2.4	2.1	1.4
Sep07	2.9	2.4	2.1	1.4
Oct07	2.8	2.5	2.0	1.4
Nov07	2.7	2.5	2.0	1.4
Dec07	2.6	2.5	2.0	1.4
Jan08	5.2	2.3	2.0	1.3
Feb08	5.0	2.3	2.0	1.3
Mar08	4.5	2.3	2.0	1.3
Apr08	4.2	2.3	2.0	1.3
May08	3.8	2.3	2.0	1.3
Jun08	3.8	2.3	2.0	1.3
FY08MoAvg	3.5	2.4	2.0	1.3

Children in Licensed Foster Homes

End of Month	<2	2-5	6-12	>12	Month Total
Jul07	945	1740	2211	2442	7338
Aug07	1020	1748	2226	2403	7397
Sep07	1088	1744	2244	2351	7427
Oct07	1137	1717	2267	2342	7463
Nov07	1170	1713	2277	2297	7457
Dec07	1181	1666	2227	2269	7343
Jan08	596	1857	2222	2546	7221
Feb08	630	1843	2250	2531	7254
Mar08	696	1856	2256	2494	7302
Apr08	746	1864	2240	2434	7284
May08	833	1871	2261	2419	7384
Jun08	849	1829	2248	2417	7343
MoAvg	908	1787	2244	2412	7351

Bed Capacity of Licensed Foster Homes

End of Month	<2	2-5	6-12	>12	Month Total
Jul07	3128	4264	4665	3373	15430
Aug07	3116	4230	4621	3328	15295
Sep07	3126	4226	4604	3306	15262
Oct07	3130	4235	4587	3279	15231
Nov07	3118	4223	4561	3259	15161
Dec07	3120	4228	4533	3224	15105
Jan08	3122	4234	4531	3223	15110
Feb08	3139	4249	4528	3217	15133
Mar08	3145	4252	4516	3203	15116
Apr08	3161	4265	4515	3198	15139
May08	3156	4255	4514	3186	15111
Jun08	3185	4282	4517	3172	15156
MoAvg	3137	4245	4558	3247	15187

[Outcome Report](#)

Retention of Active Foster Homes: 1-5 Year Rates

Cohort	1 yr	2yr	3yr	4yr	5yr
FY07	84%	-	-	-	-
FY06	87%	62%	-	-	-
FY05	84%	60%	47%	-	-
FY04	85%	63%	45%	35%	-
FY03	81%	61%	46%	33%	26%

Retention Rate = % of those licensed and first active (with a placement) in the same year that are still licensed and active

	1995	1996	1997	1998	1999	2000	2001	2002	2003	2004	2005	2006	2007	2008
1995	1.00	0.79	0.54	0.43	0.31	0.24	0.21	0.17	0.14	0.13	0.11	0.09	0.08	0.06
1996		1.00	0.81	0.61	0.44	0.33	0.28	0.23	0.18	0.16	0.14	0.11	0.11	0.09
1997			1.00	0.79	0.58	0.42	0.30	0.26	0.21	0.17	0.15	0.12	0.09	0.09
1998				1.00	0.74	0.53	0.38	0.33	0.27	0.21	0.19	0.16	0.12	0.11
1999					1.00	0.83	0.59	0.42	0.31	0.25	0.21	0.16	0.14	0.12
2000						1.00	0.83	0.61	0.46	0.35	0.28	0.22	0.18	0.15
2001							1.00	0.84	0.61	0.44	0.34	0.28	0.22	0.17
2002								1.00	0.86	0.62	0.47	0.35	0.29	0.24
2003									1.00	0.81	0.61	0.46	0.33	0.26
2004										1.00	0.85	0.63	0.45	0.35
2005											1.00	0.84	0.60	0.47
2006												1.00	0.87	0.62
2007													1.00	0.84
2008														1.00

Conditional Probability = % of the cohort still licensed and active in the prior year that are still licensed and active

	Conditional Probability of Survival for Active Cohorts													
Activity Cohorts	1995	1996	1997	1998	1999	2000	2001	2002	2003	2004	2005	2006	2007	
1995	1.00	0.79	0.69	0.78	0.72	0.80	0.86	0.82	0.84	0.89	0.82	0.87	0.84	
1996		1.00	0.81	0.75	0.72	0.74	0.85	0.81	0.81	0.87	0.86	0.82	0.97	
1997			1.00	0.79	0.74	0.73	0.71	0.86	0.83	0.78	0.89	0.83	0.75	
1998				1.00	0.84	0.72	0.73	0.74	0.89	0.78	0.78	0.86	0.79	
1999					1.00	0.83	0.71	0.71	0.74	0.80	0.86	0.77	0.87	
2000						1.00	0.83	0.73	0.76	0.77	0.80	0.79	0.80	
2001							1.00	0.84	0.73	0.71	0.78	0.83	0.76	
2002								1.00	0.86	0.72	0.77	0.74	0.83	
2003									1.00	0.81	0.76	0.75	0.72	
2004										1.00	0.85	0.74	0.72	
2005											1.00	0.84	0.71	
2006												1.00	0.87	
2007													1.00	

Retention of Licensed Foster Homes: 1-5 Year Rates

Cohort	1 yr	2yr	3yr	4yr	5yr
FY07	97%	-	-	-	-
FY06	97%	84%	-	-	-
FY05	96%	82%	65%	-	-
FY04	96%	80%	65%	37%	-
FY03	96%	81%	65%	34%	31%

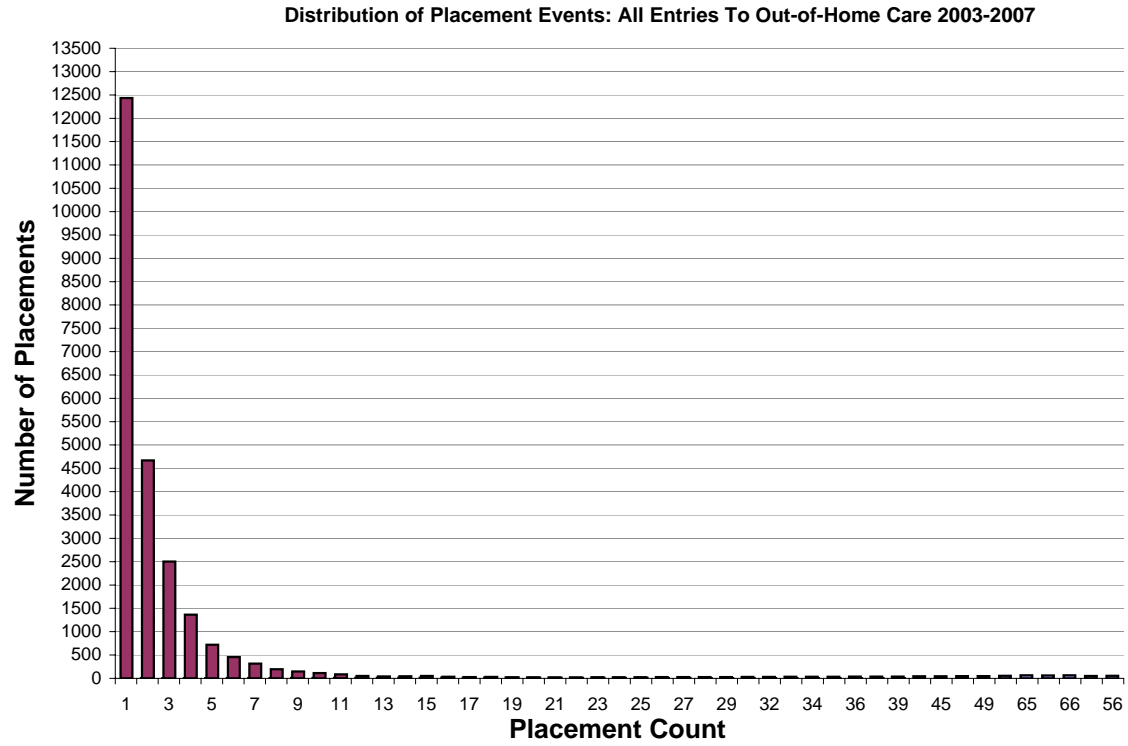
Retention Rate = % of those licensed in the same year that are still licensed

Retention Rates	1995	1996	1997	1998	1999	2000	2001	2002	2003	2004	2005	2006	2007	2008
1995	1.00	0.96	0.82	0.68	0.32	0.29	0.25	0.17	0.16	0.14	0.09	0.09	0.08	0.06
1996		1.00	0.96	0.82	0.64	0.34	0.30	0.26	0.17	0.16	0.14	0.09	0.09	0.08
1997			1.00	0.95	0.78	0.63	0.33	0.30	0.25	0.16	0.14	0.13	0.08	0.07
1998				1.00	0.95	0.80	0.66	0.34	0.32	0.27	0.18	0.15	0.13	0.10
1999					1.00	0.96	0.82	0.65	0.31	0.29	0.24	0.16	0.15	0.14
2000						1.00	0.95	0.83	0.66	0.35	0.32	0.26	0.17	0.15
2001							1.00	0.96	0.83	0.68	0.36	0.32	0.27	0.18
2002								1.00	0.97	0.85	0.70	0.38	0.34	0.28
2003									1.00	0.96	0.81	0.65	0.34	0.31
2004										1.00	0.96	0.80	0.65	0.37
2005											1.00	0.96	0.82	0.65
2006												1.00	0.97	0.84
2007													1.00	0.97
2008														1.00

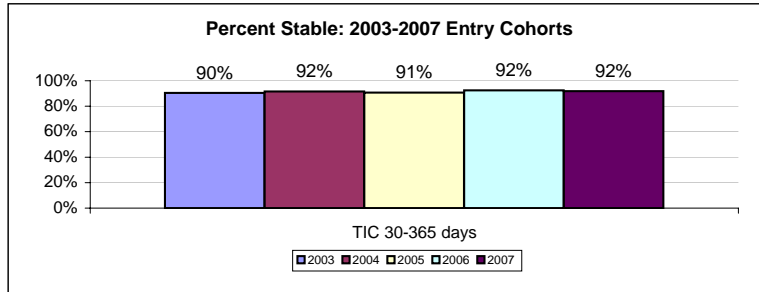
Conditional Probability = % of the cohort still licensed in the prior year that are still licensed

Retention Rates	Conditional Probability of Survival for Active Cohorts														2008
	1995	1996	1997	1998	1999	2000	2001	2002	2003	2004	2005	2006	2007	2008	
1995	1.00	0.96	0.85	0.83	0.48	0.89	0.89	0.68	0.91	0.87	0.70	0.94	0.86	0.73	
1996		1.00	0.96	0.85	0.77	0.53	0.90	0.87	0.65	0.92	0.86	0.70	0.92	0.87	
1997			1.00	0.95	0.81	0.81	0.52	0.91	0.83	0.64	0.90	0.88	0.66	0.88	
1998				1.00	0.95	0.84	0.83	0.52	0.92	0.85	0.65	0.87	0.88	0.73	
1999					1.00	0.96	0.85	0.79	0.48	0.91	0.85	0.67	0.90	0.93	
2000						1.00	0.95	0.87	0.80	0.53	0.91	0.83	0.66	0.88	
2001							1.00	0.96	0.87	0.81	0.53	0.89	0.85	0.67	
2002								1.00	0.97	0.87	0.83	0.54	0.88	0.85	
2003									1.00	0.96	0.85	0.80	0.53	0.89	
2004										1.00	0.96	0.84	0.81	0.57	
2005											1.00	0.96	0.85	0.8	
2006												1.00	0.97	0.86	
2007													1.00	0.97	

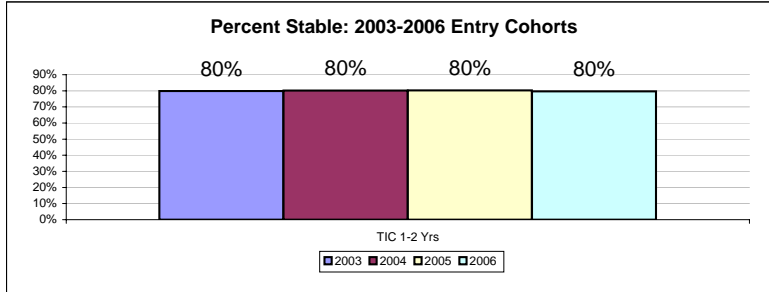
Placement	Number of Placements
1	12433
2	4668
3	2504
4	1363
5	721
6	455
7	314
8	197
9	149
10	112
11	84
12	53
13	42
14	46
15	51
16	34
17	28
18	32
19	21
20	16
21	14
22	10
23	15
24	9
25	12
26	8
27	11
28	5
29	5
30	5
32	6
33	2
34	2
35	3
36	2
38	2
39	2
44	1
45	1
47	1
49	1
54	1
65	1
61	1
66	1
52	1
56	1



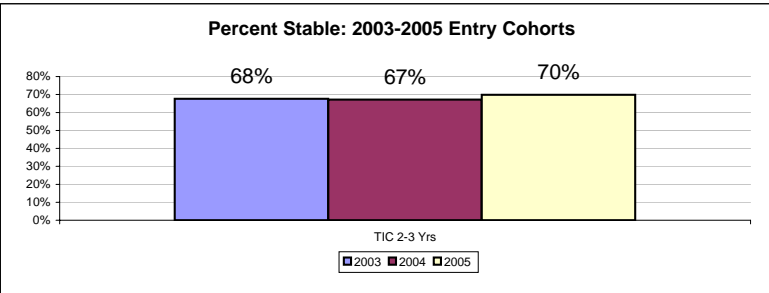
TIC 30-365 days		Braam Measure		
Entry FY	Data	Stable	Unstable	Grand Total
2003	count	1077	114	1191
	percent	90%	10%	100%
2004	count	1057	98	1155
	percent	92%	8%	100%
2005	count	1030	105	1135
	percent	91%	9%	100%
2006	count	1079	89	1168
	percent	92%	8%	100%
2007	count	1209	108	1317
	percent	92%	8%	100%
Total count		5452	514	5966
Total percent		91%	9%	100%



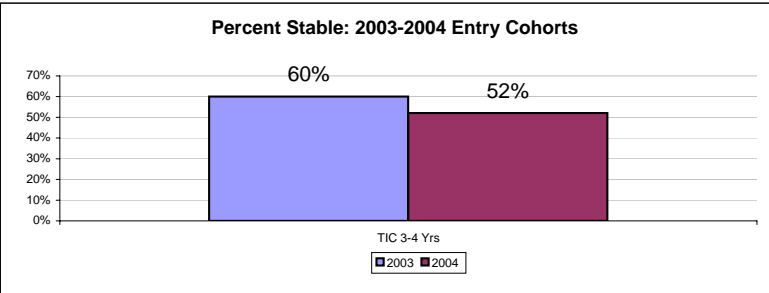
TIC 1-2 Yrs		Braam Measure		
Entry FY	Data	Stable	Unstable	Grand Total
2003	count	761	192	953
	percent	80%	20%	100%
2004	count	933	230	1163
	percent	80%	20%	100%
2005	count	964	237	1201
	percent	80%	20%	100%
2006	count	832	212	1044
	percent	80%	20%	100%
Total count		3490	871	4361
Total percent		80%	20%	100%



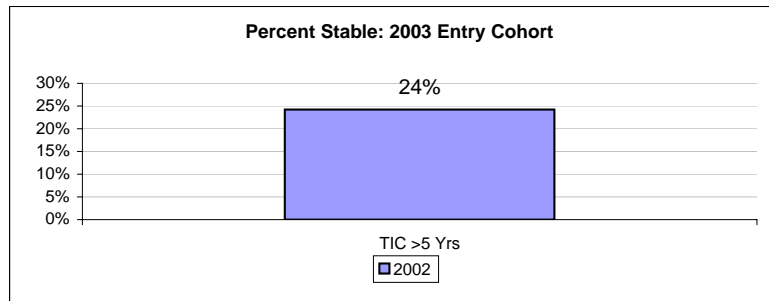
TIC 2-3 Yrs		Braam Measure		
Entry FY	Data	Stable	Unstable	Grand Total
2003	count	577	278	855
	percent	68%	32%	100%
2004	count	656	323	979
	percent	67%	33%	100%
2005	count	759	327	1086
	percent	70%	30%	100%
Total count		1992	928	2920
Total percent		68%	32%	100%



TIC 3-4 Yrs		Braam Measure		
Entry FY	Data	Stable	Unstable	Grand Total
2003	count	302	201	503
	percent	60%	40%	100%
2004	count	278	255	533
	percent	52%	48%	100%
Total count		580	456	1036
Total percent		56%	44%	100%



TIC 4-5 Yrs		Braam Measure		
Entry FY	Data	Stable	Unstable	Grand Total
2003	count	93	141	234
	percent	40%	60%	100%
Total count		93	141	234
Total percent		40%	60%	100%



Social Workers With at least One Child in Placement - September 1, 2008

Open Worker Assignments Weighted: .36 Guardianship and Payment Only Cases, .5 Courtesy Supervision and 1.3 ICW Cases. All other cases are 1. Includes some duplication across offices. All caseloads >18.0 are considered 'over 18 cases'.

Median=18.0 Avg = 18.9

Region	Office	Data	(a) 18 Cases or Fewer	(b) Over 18 Cases	Grand Total
1	Clarkston	Number of Workers	6		6
		% of Workers	100.00%	0.00%	100.00%
	Colfax	Number of Workers	8		8
		% of Workers	100.00%	0.00%	100.00%
	Colville	Number of Workers	5	4	9
		% of Workers	55.56%	44.44%	100.00%
	Ferry County/Republic	Number of Workers	3	2	5
		% of Workers	60.00%	40.00%	100.00%
	Lincoln County (Spokane/Lincoln Co.)	Number of Workers	3		3
		% of Workers	100.00%	0.00%	100.00%
	Moses Lake	Number of Workers	8	11	19
% of Workers		42.11%	57.89%	100.00%	
Newport (Pend Oreille DCFS Office)	Number of Workers	7		7	
	% of Workers	100.00%	0.00%	100.00%	
Omak	Number of Workers	8	2	10	
	% of Workers	80.00%	20.00%	100.00%	
Spokane DCFS Office	Number of Workers	47	62	109	
	% of Workers	43.12%	56.88%	100.00%	
Wenatchee	Number of Workers	8	6	14	
	% of Workers	57.14%	42.86%	100.00%	
1 Number of Workers			103	87	190
1 % of Workers			54.21%	45.79%	100.00%
2	Ellensburg	Number of Workers	4	3	7
		% of Workers	57.14%	42.86%	100.00%
	Goldendale	Number of Workers	5		5
		% of Workers	100.00%	0.00%	100.00%
	Region 2 Office	Number of Workers		11	11
		% of Workers	0.00%	100.00%	100.00%
	Sunnyside DCFS	Number of Workers	3	4	7
		% of Workers	42.86%	57.14%	100.00%
	Toppenish	Number of Workers	8	13	21
		% of Workers	38.10%	61.90%	100.00%
Tri Cities	Number of Workers	16	15	31	
	% of Workers	51.61%	48.39%	100.00%	
Walla Walla	Number of Workers	9	2	11	
	% of Workers	81.82%	18.18%	100.00%	
White Salmon	Number of Workers	3	1	4	
	% of Workers	75.00%	25.00%	100.00%	
Yakima	Number of Workers	24	14	38	
	% of Workers	63.16%	36.84%	100.00%	
2 Number of Workers			72	63	135
2 % of Workers			53.33%	46.67%	100.00%

Social Workers With at least One Child in Placement - September 1, 2008

Open Worker Assignments Weighted: .36 Guardianship and Payment Only Cases, .5 Courtesy Supervision and 1.3 ICW Cases. All other cases are 1. Includes some duplication across offices. **All caseloads >18.0 are considered 'over 18 cases'.**

Median=18.0
Avg = 18.9

Region	Office	Data	(a) 18 Cases or Fewer	(b) Over 18 Cases	Grand Total
3	Bellingham	Number of Workers	16	20	36
		% of Workers	44.44%	55.56%	100.00%
	Everett	Number of Workers	11	18	29
		% of Workers	37.93%	62.07%	100.00%
	Friday Harbor	Number of Workers	1		1
		% of Workers	100.00%	0.00%	100.00%
	Lynnwood	Number of Workers	11	6	17
		% of Workers	64.71%	35.29%	100.00%
	Mount Vernon	Number of Workers	10	16	26
		% of Workers	38.46%	61.54%	100.00%
	Oak Harbor	Number of Workers	7	2	9
% of Workers		77.78%	22.22%	100.00%	
Reg 3 Lummi Tribe	Number of Workers	8		8	
	% of Workers	100.00%	0.00%	100.00%	
Region 3 Office	Number of Workers	1	12	13	
	% of Workers	7.69%	92.31%	100.00%	
Skyvalley	Number of Workers	12	3	15	
	% of Workers	80.00%	20.00%	100.00%	
Smokey Point	Number of Workers	4	17	21	
	% of Workers	19.05%	80.95%	100.00%	
3 Number of Workers			81	94	175
3 % of Workers			46.29%	53.71%	100.00%
4	King Centralized Services - RO4	Number of Workers	8	26	34
		% of Workers	23.53%	76.47%	100.00%
	King East DCFS	Number of Workers	14	11	25
		% of Workers	56.00%	44.00%	100.00%
	King South DCFS	Number of Workers	26	10	36
		% of Workers	72.22%	27.78%	100.00%
King West DCFS	Number of Workers	33	12	45	
	% of Workers	73.33%	26.67%	100.00%	
Office of African American Childrens Sv	Number of Workers	8	23	31	
	% of Workers	25.81%	74.19%	100.00%	
Office of Indian Child Welfare - RO4	Number of Workers	8	16	24	
	% of Workers	33.33%	66.67%	100.00%	
4 Number of Workers			97	98	195
4 % of Workers			49.74%	50.26%	100.00%
5	Bremerton	Number of Workers	23	15	38
		% of Workers	60.53%	39.47%	100.00%
	R5 S'Klallam Tribe	Number of Workers		1	1
	% of Workers	0.00%	100.00%	100.00%	
Tacoma	Number of Workers	45	65	110	
	% of Workers	40.91%	59.09%	100.00%	
5 Number of Workers			68	81	149
5 % of Workers			45.64%	54.36%	100.00%

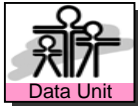
Social Workers With at least One Child in Placement - September 1, 2008

Open Worker Assignments Weighted: .36 Guardianship and Payment Only Cases, .5 Courtesy Supervision and 1.3 ICW Cases. All other cases are 1. Includes some duplication across offices. **All caseloads >18.0 are considered 'over 18 cases'.**

Median=18.0 Avg = 18.9

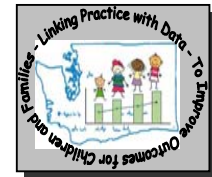
Region	Office	Data	(a) 18 Cases or Fewer	(b) Over 18 Cases	Grand Total
6	Aberdeen	Number of Workers	4	15	19
		% of Workers	21.05%	78.95%	100.00%
	Centralia	Number of Workers	7	8	15
		% of Workers	46.67%	53.33%	100.00%
	Forks	Number of Workers	4	1	5
		% of Workers	80.00%	20.00%	100.00%
	Kelso	Number of Workers	12	11	23
		% of Workers	52.17%	47.83%	100.00%
	Long Beach DCFS	Number of Workers	3		3
		% of Workers	100.00%	0.00%	100.00%
	Olympia DCFS (Tumwater)	Number of Workers	23	9	32
		% of Workers	71.88%	28.13%	100.00%
	Port Angeles	Number of Workers	9	4	13
		% of Workers	69.23%	30.77%	100.00%
	Port Townsend	Number of Workers	3	3	6
		% of Workers	50.00%	50.00%	100.00%
	Reg 6 Makah Tribe	Number of Workers	1		1
% of Workers		100.00%	0.00%	100.00%	
Reg 6 Quinault Tribe	Number of Workers		1	1	
	% of Workers	0.00%	100.00%	100.00%	
Region 6 Office Childrens Administratio	Number of Workers	1		1	
	% of Workers	100.00%	0.00%	100.00%	
Shelton	Number of Workers	9	6	15	
	% of Workers	60.00%	40.00%	100.00%	
South Bend	Number of Workers	4	1	5	
	% of Workers	80.00%	20.00%	100.00%	
Stevenson	Number of Workers	4		4	
	% of Workers	100.00%	0.00%	100.00%	
Vancouver	Number of Workers	19	32	51	
	% of Workers	37.25%	62.75%	100.00%	
6 Number of Workers			103	91	194
6 % of Workers			53.09%	46.91%	100.00%
Total Number of Workers			524	514	1038
Total % of Workers			50.48%	49.52%	100.00%

Permanency: Continuity of Family Relationships and Connections will be Preserved for Children



REPORT PERIOD	Current Camis Download
GENDER	(All)
AGE AT PLACEMENT	(All)
SINGLE RACE	(All)
HISPANIC	(All)
LEGAL CUST	(All)
LEGAL STAT	(All)
LOS > 60	(All)
CURRENT AGE	(All)
ANY AFR AMER	(All)
LOS	(All)
ANY NAT AMER	(All)
PLACEMENT TYPE	(All)
TRIBAL4E	No

Number of children in out of home care. All open episodes. Uses current CAMIS download for current number reporting. LOS computed from beginning of download month. Broken out by relative/non.



July 08 Camis Download

		REGION						
RELATIVE PLACEMENT	Data	1	2	3	4	5	6	Grand Total
Yes	Children Count	674	444	795	778	676	563	3930
	%	39.0%	37.8%	41.2%	39.9%	40.6%	30.3%	38.1%
No	Children Count	1054	730	1134	1174	990	1293	6375
	%	61.0%	62.2%	58.8%	60.1%	59.4%	69.7%	61.9%
Total Children Count		1728	1174	1929	1952	1666	1856	10305
Total %		100.0%	100.0%	100.0%	100.0%	100.0%	100.0%	100.0%

This information is for internal use only.

Official numbers for public disclosure must be obtained through the DSHS Children's Administration's Data Unit.

Additional informational reports- placement stability
 Licensed Foster Home Age Range and Foster Child Age Match: July 2008

		Region						
infantmatch	Data	1	2	3	4	5	6	Grand Total
Licensed:Age <1 Year	Count of Person ID	230	103	141	141	166	173	954
	Count of Person ID2	97.0%	93.6%	96.6%	99.3%	98.2%	98.3%	97.3%
Not Licensed:Age <1 Year	Count of Person ID	7	7	5	1	3	3	26
	Count of Person ID2	3.0%	6.4%	3.4%	0.7%	1.8%	1.7%	2.7%
Total Count of Person ID		237	110	146	142	169	176	980
Total Count of Person ID2		100.0%	100.0%	100.0%	100.0%	100.0%	100.0%	100.0%

		Region						
toddlermatch	Data	1	2	3	4	5	6	Grand Total
Licensed: Age 2 to 5 Years	Count of Person ID	269	219	255	174	219	288	1424
	Count of Person ID2	97.1%	98.6%	99.2%	97.8%	99.1%	96.3%	97.9%
Not Licensed: Age 2 to 5 Years	Count of Person ID	8	3	2	4	2	11	30
	Count of Person ID2	2.9%	1.4%	0.8%	2.2%	0.9%	3.7%	2.1%
Total Count of Person ID		104	85	95	68	76	112	540
Total Count of Person ID2		100.0%	100.0%	100.0%	100.0%	100.0%	100.0%	100.0%

		Region						
childmatch	Data	1	2	3	4	5	6	Grand Total
Licensed Age 6 to 12 Years	Count of Person ID	362	246	259	196	216	312	1591
	Count of Person ID2	98.4%	96.5%	97.0%	98.5%	98.6%	97.2%	97.7%
Not Licensed Age 6 to 12 Years	Count of Person ID	6	9	8	3	3	9	38
	Count of Person ID2	1.6%	3.5%	3.0%	1.5%	1.4%	2.8%	2.3%
Total Count of Person ID		368	255	267	199	219	321	1629
Total Count of Person ID2		100.0%	100.0%	100.0%	100.0%	100.0%	100.0%	100.0%

		Region						
adolmatch	Data	1	2	3	4	5	6	Grand Total
Licensed Age 13 to 18 Years	Count of Person ID	212	202	189	224	213	355	1395
	Count of Person ID2	96.8%	96.2%	99.0%	97.8%	100.0%	98.9%	98.2%
Not Licensed Age 13 to 18 Years	Count of Person ID	7	8	2	5		4	26
	Count of Person ID2	3.2%	3.8%	1.0%	2.2%	0.0%	1.1%	1.8%
Total Count of Person ID		219	210	191	229	213	359	1421
Total Count of Person ID2		100.0%	100.0%	100.0%	100.0%	100.0%	100.0%	100.0%

Child Age Group	Region	1	2	3	4	5	6	Grand Total
Age <1 Year	% Licensed for Age	97.0%	93.6%	96.6%	99.3%	98.2%	98.3%	97.3%
Age 2 to 5 Years	% Licensed for Age	97.1%	98.6%	99.2%	97.8%	99.1%	96.3%	97.9%
Age 6 to 12 Years	% Licensed for Age	98.4%	96.5%	97.0%	98.5%	98.6%	97.2%	97.7%
Age 13 to 18 Years	% Licensed for Age	96.8%	96.2%	99.0%	97.8%	100.0%	98.9%	98.2%

Family Team Decision-Making Meetings Summary Report - 3rd Quarter 2008

Percent of Children Receiving FTDM Jul-Sep 2008

CRCs excluded

Source: "Children Receiving FTDM" extracted from FTDM database maintained at each original pilot site.

FTDM Reason	Data Description	STATE Total	Spokane	Richland	Yakima	Kent	MLK JR	Tacoma	Vancouver	Kitsap	Region 3 (includes Oak Harbor)
Emergency Placement	# Children Eligible	1,062	214	57	81	48	26	251	66	74	245
	# Children Receiving FTDM	398	112	31	42	14	3	50	30	30	86
	% of Children Who Received a FTDM	37.5%	52.3%	54.4%	51.9%	29.2%	11.5%	19.9%	45.5%	40.5%	35.1%

Additional informational reports- placement stability

Days From Removal to First Move (2nd placement): Placements beginning FY2008

FY	2008
----	------

		DaysToMove				
Region	Data	0-8	9-30	>30	no move	Grand Total
1	count	294	105	142	1040	1581
	percent	18.6%	6.6%	9.0%	65.8%	100.0%
2	count	178	56	100	738	1072
	percent	16.6%	5.2%	9.3%	68.8%	100.0%
3	count	229	84	104	790	1207
	percent	19.0%	7.0%	8.6%	65.5%	100.0%
4	count	188	106	139	674	1107
	percent	17.0%	9.6%	12.6%	60.9%	100.0%
5	count	199	115	209	931	1454
	percent	13.7%	7.9%	14.4%	64.0%	100.0%
6	count	287	91	161	1123	1662
	percent	17.3%	5.5%	9.7%	67.6%	100.0%
Total count		1375	557	855	5296	8083
Total percent		17.0%	6.9%	10.6%	65.5%	100.0%

**Total Inservice Training Hours For Foster Homes Renewed During FY08
and Found Non-Compliant**

Compliant	No
Status Code	(Multiple Items)

Total Qualified Hrs	Data	Region						Grand Total
		1	2	3	4	5	6	
1	count percent	1 1.4%	1 1.4%	1 0.0%	4 4.4%	1 1.1%	3 4.6%	10 2.2%
2	count percent	1 1.4%	3 4.3%	2 3.1%	1 1.1%	0 0.0%	1 1.5%	8 1.8%
3	count percent	1 1.4%	1 1.4%	1 1.5%	3 3.3%	3 3.4%	3 4.6%	12 2.7%
4	count percent	1 1.4%	0 0.0%	0 0.0%	3 3.3%	3 3.4%	2 3.1%	9 2.0%
5	count percent	0 0.0%	0 0.0%	1 1.5%	1 1.1%	0 0.0%	1 1.5%	3 0.7%
6	count percent	4 5.6%	1 1.4%	2 3.1%	8 8.9%	6 6.9%	7 10.8%	28 6.3%
7	count percent	0 0.0%	1 1.4%	2 3.1%	1 1.1%	0 0.0%	3 4.6%	7 1.6%
8	count percent	0 0.0%	0 0.0%	0 0.0%	2 2.2%	1 1.1%	3 4.6%	6 1.3%
9	count percent	0 0.0%	0 0.0%	1 1.5%	0 0.0%	0 0.0%	0 0.0%	1 0.2%
10	count percent	2 2.8%	0 0.0%	0 0.0%	1 1.1%	0 0.0%	1 1.5%	4 0.9%
11	count percent	0 0.0%	0 0.0%	1 1.5%	1 1.1%	1 1.1%	2 3.1%	5 1.1%
12	count percent	7 9.9%	0 0.0%	4 6.2%	5 5.6%	7 8.0%	6 9.2%	29 6.5%
13	count percent	1 1.4%	0 0.0%	0 0.0%	2 2.2%	1 1.1%	0 0.0%	4 0.9%
14	count percent	5 7.0%	0 0.0%	1 1.5%	0 0.0%	1 1.1%	4 6.2%	11 2.5%
15	count percent	0 0.0%	0 0.0%	0 0.0%	1 1.1%	2 2.3%	0 0.0%	3 0.7%
16	count percent	0 0.0%	0 0.0%	1 1.5%	1 1.1%	1 1.1%	0 0.0%	3 0.7%
17	count percent	0 0.0%	1 1.4%	0 0.0%	1 1.1%	0 0.0%	1 1.5%	3 0.7%
18	count percent	1 1.4%	0 0.0%	3 4.6%	3 3.3%	2 2.3%	0 0.0%	9 2.0%
19	count percent	1 1.4%	1 1.4%	1 1.5%	1 1.1%	0 0.0%	0 0.0%	4 0.9%
20	count percent	1 1.4%	1 1.4%	1 1.5%	0 0.0%	1 1.1%	2 3.1%	6 1.3%
21	count percent	3 4.2%	1 1.4%	1 1.5%	1 1.1%	1 1.1%	1 1.5%	8 1.8%
22	count percent	0 0.0%	1 1.4%	0 0.0%	1 1.1%	1 1.1%	0 0.0%	3 0.7%
23	count percent	1 1.4%	0 0.0%	0 0.0%	0 0.0%	0 0.0%	0 0.0%	1 0.2%
24	count percent	1 1.4%	0 0.0%	2 3.1%	0 0.0%	3 3.4%	3 4.6%	9 2.0%
25	count percent	1 1.4%	0 0.0%	0 0.0%	0 0.0%	0 0.0%	1 1.5%	2 0.4%

Additional informational reports- foster parent training and information

Percent of 2008 Foster Home Assessment Requests Returned

	Region 1	Region 2	Region 3	Region 4	Region 5	Region 6	State
Total # sent	517	278	367	284	255	829	2530
Total # returned	140	88	69	65	97	190	649
Total # excluded	0	0	0	0	6	7	13
Return Rate	27.1%	31.7%	18.8%	22.9%	39.0%	23.1%	25.8%

homes in the process of closure or revocation

Informational report associated with D 1.2 (stays in DSHS offices, hotels, apartments)

Youth with 2 placements on the same day (Column C) followed immediately by at least one placement the next day (Column D)

Persons	Placements	Date With 2 Placements	Date With 1 Placement	Comments
1	1	8/11/2008	8/12/2008	16 yr old, hx of repeated runs from foster home placements, failure to attend substance abuse tx, currently in BRS placement
2	1	1/5/2008	1/6/2008	15 year old, repeated runs from placement, failure to attend substance abuse tx, last placement CRC
3	1	12/30/2007	12/31/2007	14 year old, repeated runs from placement, mental health needs, currently in BRS placement.
3	2	1/2/2008	1/3/2008	
4	1	9/20/2007	9/21/2007	18 year old in protective custody, runs from CRC, no longer in placement, in care only 2 days.
5	1	1/17/2008	1/18/2008	16 year old, moved from foster home to temporary hospital placement for mental health evaluation then moved to another foster home placement, currently in severe BRS bed
6	1	6/26/2008	6/27/2008	13 year old with run from CRC, currently in severe BRS bed

Informational reports associated with D 2.2 (DLR/ CPS)

Victims in DLR Investigations Completed During FY08 With Foster Parents or Staff as Subjects

(may be duplicated by Region and placement location at time of report)

		Placement Type				
REGION	Data	Licensed FH	Group Home	Relative/Parent	Other Type	Grand Total
1	count	88	18	7	7	120
	percent	73.3%	15.0%	5.8%	5.8%	100.0%
2	count	49	1		1	51
	percent	96.1%	2.0%	0.0%	2.0%	100.0%
3	count	90	7	8	4	109
	percent	82.6%	6.4%	7.3%	3.7%	100.0%
4	count	84	14	5	16	119
	percent	70.6%	11.8%	4.2%	13.4%	100.0%
5	count	156	6	11	23	196
	percent	79.6%	3.1%	5.6%	11.7%	100.0%
6	count	130	6	11	7	154
	percent	84.4%	3.9%	7.1%	4.5%	100.0%
Total count		597	52	42	58	749
Total percent		79.7%	6.9%	5.6%	7.7%	100.0%

Informational reports associated with D 2.2 (DLR/ CPS)

Victims in DLR Investigations Completed During FY08 With Foster Parents or Staff as Subjects (may be duplicated by Region)

		GENDER		
REGION	Data	Female	Male	Grand Total
1	count	50	67	117
	percent	42.7%	57.3%	100.0%
2	count	19	31	50
	percent	38.0%	62.0%	100.0%
3	count	46	56	102
	percent	45.1%	54.9%	100.0%
4	count	57	61	118
	percent	48.3%	51.7%	100.0%
5	count	84	108	192
	percent	43.8%	56.3%	100.0%
6	count	74	80	154
	percent	48.1%	51.9%	100.0%
Total count		330	403	733
Total percent		45.0%	55.0%	100.0%

Informational reports associated with D 2.2 (DLR/ CPS)

Victims in DLR Investigations Completed During FY08 With Foster Parents or Staff as Subjects (may be duplicated by Region)

		RACE								
REGION	Data	Cauc	Afr Amer	Nat Amer	Multi	Asian/Pac Isl	Other	Unreport	Grand Total	
1	count	84	5	14	7			5	2	117
	percent	71.8%	4.3%	12.0%	6.0%	0.0%		4.3%	1.7%	100.0%
2	count	35	2	3	9	1				50
	percent	70.0%	4.0%	6.0%	18.0%	2.0%		0.0%	0.0%	100.0%
3	count	79	4	9	4	2		4		102
	percent	77.5%	3.9%	8.8%	3.9%	2.0%		3.9%	0.0%	100.0%
4	count	48	31	9	23	2		5		118
	percent	40.7%	26.3%	7.6%	19.5%	1.7%		4.2%	0.0%	100.0%
5	count	115	25	14	35	1		1	1	192
	percent	59.9%	13.0%	7.3%	18.2%	0.5%		0.5%	0.5%	100.0%
6	count	112	7	15	14	2		2	2	154
	percent	72.7%	4.5%	9.7%	9.1%	1.3%		1.3%	1.3%	100.0%
Total count		473	74	64	92	8		17	5	733
Total percent		64.5%	10.1%	8.7%	12.6%	1.1%		2.3%	0.7%	100.0%

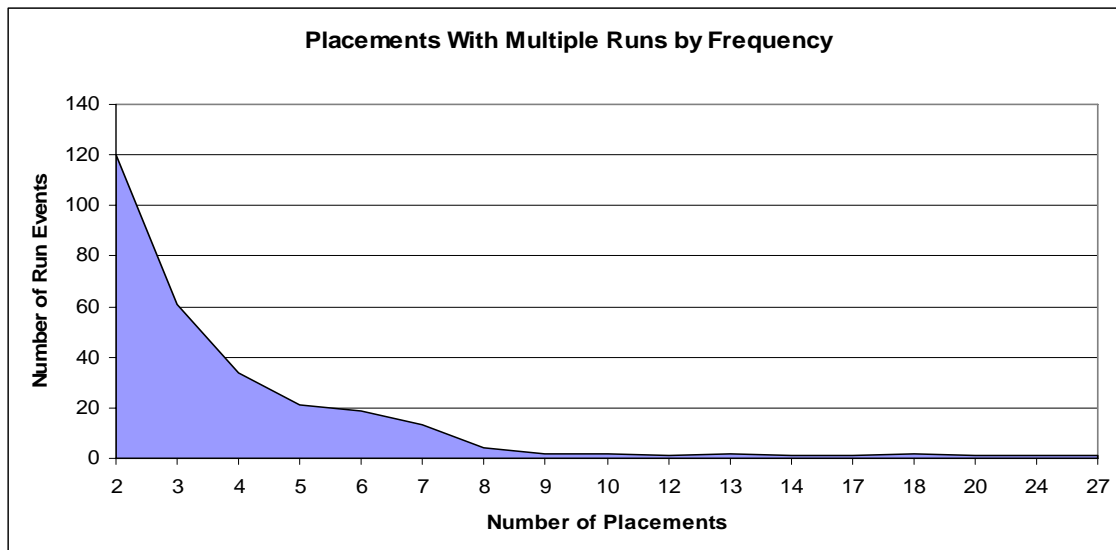
Informational reports associated with D 2.2 (DLR/ CPS)

Victims in DLR Investigations Completed During FY08 With Foster Parents or Staff as Subjects (may be duplicated by Region)

		HISPANIC		
REGION	Data	No	Yes	Grand Total
1	count	103	14	117
	percent	88.0%	12.0%	100.0%
2	count	35	15	50
	percent	70.0%	30.0%	100.0%
3	count	82	20	102
	percent	80.4%	19.6%	100.0%
4	count	101	17	118
	percent	85.6%	14.4%	100.0%
5	count	170	22	192
	percent	88.5%	11.5%	100.0%
6	count	134	20	154
	percent	87.0%	13.0%	100.0%
Total count		625	108	733
Total percent		85.3%	14.7%	100.0%

Outcome Report

- * The evaluation of running, particularly multiple runs, is complicated by how runs are documented in CAMIS –
 - * Multiple run events may document one continuous absence from a single placement
 - * Multiple run events may document one continuous run with only brief & temporary detention, JRA or CRC stays but no return to a foster, relative or group home placement
 - * Multiple run events may document repeated brief absences (violations of curfew) from an ongoing placement resource (e.g. foster or group home)
 - * These patterns tend to explain data outliers – youth with an extreme number of run events
- * Run ‘episodes’ – defined as one or more run events unbroken by another foster, relative or group care placement – may provide a better unit of analysis than run events



Informational reports associated with F 3.2 (number of days on runaway status)

Info Report (in care last day of FY)

[Outcome Report](#)

Mean number of days in on-run status

Run events beginning during the FY (this is a change from past reports)

		Region						
OnRun during Episode	Data	1	2	3	4	5	6	Grand Total
Y	Children	45	46	60	94	68	90	403
	MEAN RUN DAYS	53.2	74.2	74.0	61.3	81.1	56.1	65.9

Additional informational reports- services to adolescents

Timely Enrollment

**Foster Youth Enrolled in 2006-2007 School Year With
Placement Event Dates and Enrollment Dates Between 9/1/2006 and 5/30/2007
Enrollment Date Within 3 Days of Placement Event (Removals and Moves)**

Region	Data	Timely Enrollment		Grand Total
		Yes	No	
1	count	406	49	455
	percent	89.2%	10.8%	100.0%
2	count	191	56	247
	percent	77.3%	22.7%	100.0%
3	count	483	41	524
	percent	92.2%	7.8%	100.0%
4	count	484	72	556
	percent	87.1%	12.9%	100.0%
5	count	287	64	351
	percent	81.8%	18.2%	100.0%
6	count	596	47	643
	percent	92.7%	7.3%	100.0%
Total count		2447	329	2776
Total percent		88.1%	11.9%	100.0%