

APPENDIX I
Monitoring Report #6—March 2009

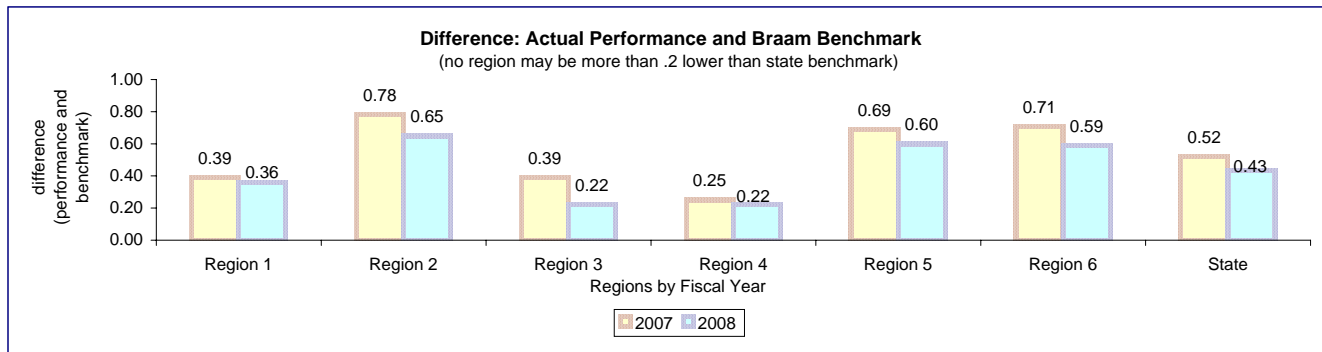
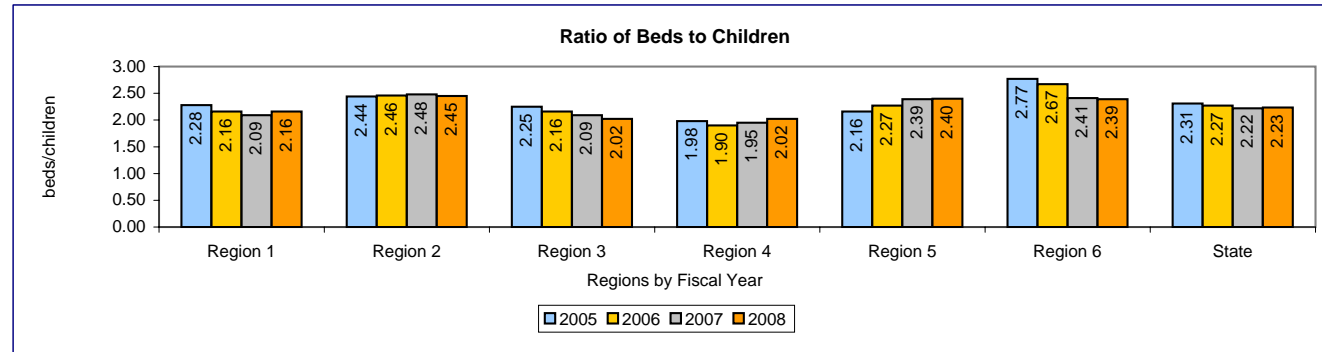
Children's Administration FY08 Performance Report

3.A.1.1 Plan page 10

[Link to Informational Report](#)

Report FY	Measure	Region 1	Region 2	Region 3	Region 4	Region 5	Region 6	State	
2005	Actual Performance	beds/child	2.28	2.44	2.25	1.98	2.16	2.77	2.31
	Baseline		0.0%	0.0%	0.0%	0.0%	0.0%	0.0%	0.0%
	Actual % Change from Prior Yr		0.0%	0.0%	0.0%	0.0%	0.0%	0.0%	0.0%
	Difference (actual - benchmark)		na	na	na	na	na	na	na
2006	Actual Performance	beds/child	2.16	2.46	2.16	1.90	2.27	2.67	2.27
	Baseline		0.0%	0.0%	0.0%	0.0%	0.0%	0.0%	0.0%
	Actual % Change from Prior Yr		-5.3%	0.8%	-4.0%	-4.0%	5.1%	-3.6%	-1.7%
	Difference (actual - benchmark)		0.00	0.00	0.00	0.00	0.00	0.00	0.00
2007	Actual Performance	beds/child	2.09	2.48	2.09	1.95	2.39	2.41	2.22
	Benchmark		1.70	1.70	1.70	1.70	1.70	1.70	1.70
	Actual % Change from Prior Yr		-3.2%	0.8%	-3.2%	2.6%	5.3%	-9.7%	-2.2%
	Difference (actual - benchmark)		0.39	0.78	0.39	0.25	0.69	0.71	0.52
2008	Actual Performance	beds/child	2.16	2.45	2.02	2.02	2.40	2.39	2.23
	Benchmark		1.80	1.80	1.80	1.80	1.80	1.80	1.80
	Actual % Change from Prior Yr		3.3%	-1.3%	-3.2%	3.7%	0.4%	-0.8%	0.6%
	Difference (actual - benchmark)		0.36	0.65	0.22	0.22	0.60	0.59	0.43

Measure Description:
 Monthly average over FY: count of bed capacity for all homes with a valid WA foster home license divided by count of children in a licensed foster home bed on the last day of each month.
Children's Administration has met the benchmark in the last two years. In addition, legislation in 2007 expanded the ability to place with unlicensed caregivers who are extended family members and non-related kinship caregivers. This has decreased the pressure on licensed placement resources.



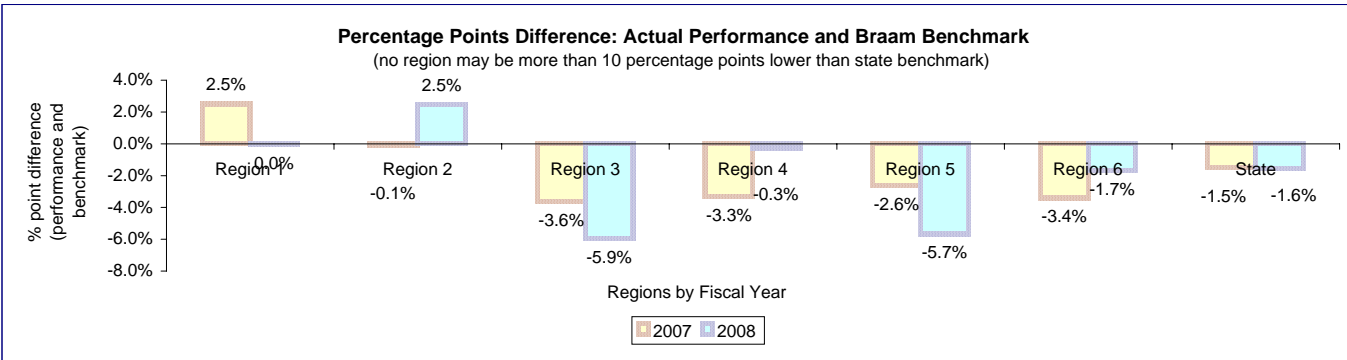
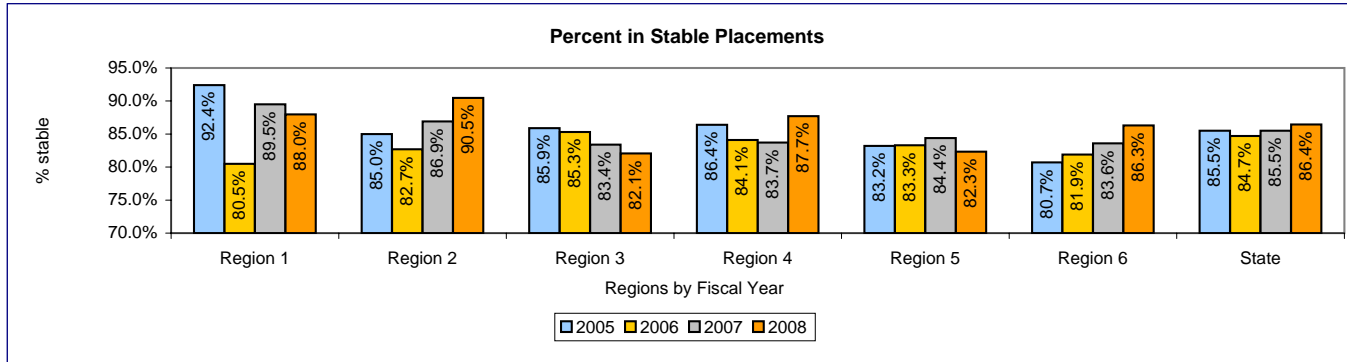
[data file](#)

Stability

[Link to Informational Report](#)

Report FY	Measure	Region 1	Region 2	Region 3	Region 4	Region 5	Region 6	State	
2005	Actual Performance	% stable	92.4%	85.0%	85.9%	86.4%	83.2%	80.7%	85.5%
	Baseline		0.0%	0.0%	0.0%	0.0%	0.0%	0.0%	0.0%
	Actual % Change from Prior Yr		0.0%	0.0%	0.0%	0.0%	0.0%	0.0%	0.0%
	% Point Difference (actual - benchmark)		na	na	na	na	na	na	na
2006	Actual Performance	% stable	80.5%	82.7%	85.3%	84.1%	83.3%	81.9%	84.7%
	Baseline		0.0%	0.0%	0.0%	0.0%	0.0%	0.0%	0.0%
	Actual % Change from Prior Yr		-12.9%	-2.7%	-0.7%	-2.7%	0.1%	1.5%	-0.9%
	% Point Difference (actual - benchmark)		0.0%	0.0%	0.0%	0.0%	0.0%	0.0%	0.0%
2007	Actual Performance	% stable	89.5%	86.9%	83.4%	83.7%	84.4%	83.6%	85.5%
	Benchmark		87.0%	87.0%	87.0%	87.0%	87.0%	87.0%	87.0%
	Actual % Change from Prior Yr		11.2%	5.1%	-2.2%	-0.5%	1.3%	2.1%	0.9%
	% Point Difference (actual - benchmark)		2.5%	-0.1%	-3.6%	-3.3%	-2.6%	-3.4%	-1.5%
2008	Actual Performance	% stable	88.0%	90.5%	82.1%	87.7%	82.3%	86.3%	86.4%
	Benchmark		88.0%	88.0%	88.0%	88.0%	88.0%	88.0%	88.0%
	Actual % Change from Prior Yr		-1.7%	4.1%	-1.6%	4.8%	-2.4%	3.2%	1.1%
	% Point Difference (actual - benchmark)		0.0%	2.5%	-5.9%	-0.3%	-5.7%	-1.7%	-1.6%

Measure Description:
 Counts of qualifying events within grand-episodes (CAMIS placement episodes that are less than 2 days apart are combined) by fiscal year of entry (beginning of grand episode). Each year we evaluate 5 years of entry cohorts, allowing a 1 year lag time after the most current of the 5 entry years. FY08 report evaluated entries during FY 02-06. The Braam stability measure is based on the combined percent of children with less than 3 qualifying placements during the most current entry cohort if their los was <=1 year, and during the second most recent entry cohort if their los was 1-2 years. The stability of the 3 earlier entry cohorts is evaluated for informational purposes only. **Although Children's Administration has not met the benchmarks, which have increased each year, Children's Administration has shown improvement over the last three years.**



[data file](#)

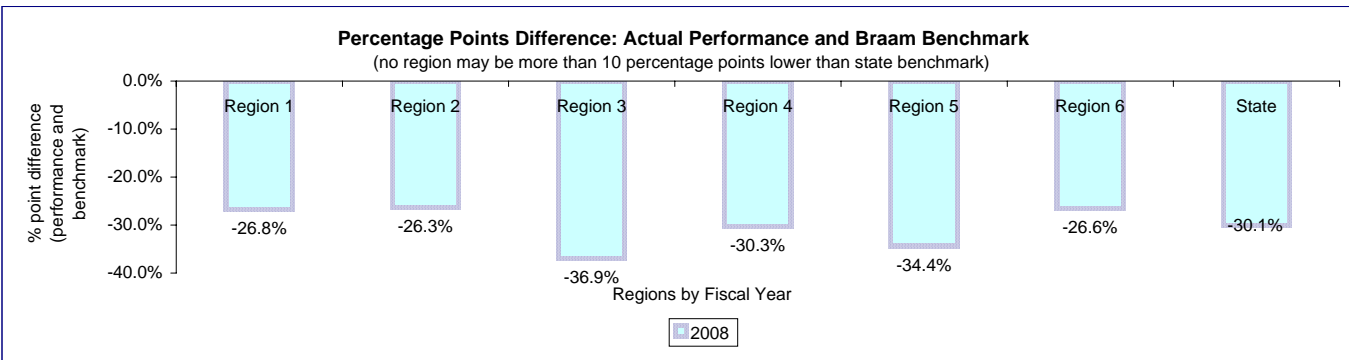
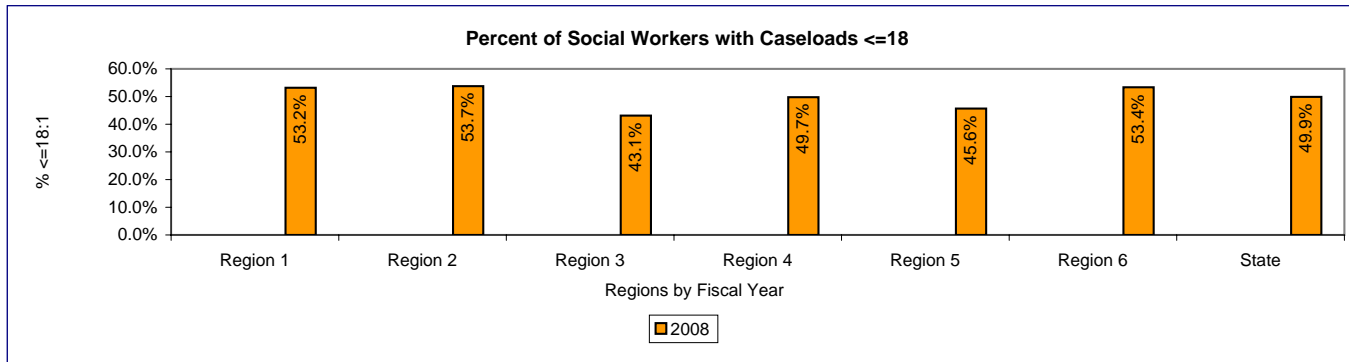
CaseRatio

3.A.1.3 Plan page 11

[Link to Informational Reports](#)

Report FY	Measure	Region 1	Region 2	Region 3	Region 4	Region 5	Region 6	State
2005	Actual Performance							
	Baseline							
	Actual % Change from Prior Yr							
	% Point Difference (actual - benchmark)							
2006	Actual Performance							
	Baseline							
	Actual % Change from Prior Yr							
	% Point Difference (actual - benchmark)							
2007	Actual Performance							
	Baseline							
	Actual % Change from Prior Yr							
	% Point Difference (actual - benchmark)							
2008	Actual Performance	53.2%	53.7%	43.1%	49.7%	45.6%	53.4%	49.9%
	Benchmark	80.0%	80.0%	80.0%	80.0%	80.0%	80.0%	80.0%
	Actual % Change from Prior Yr							
	% Point Difference (actual - benchmark)	-26.8%	-26.3%	-36.9%	-30.3%	-34.4%	-26.6%	-30.1%

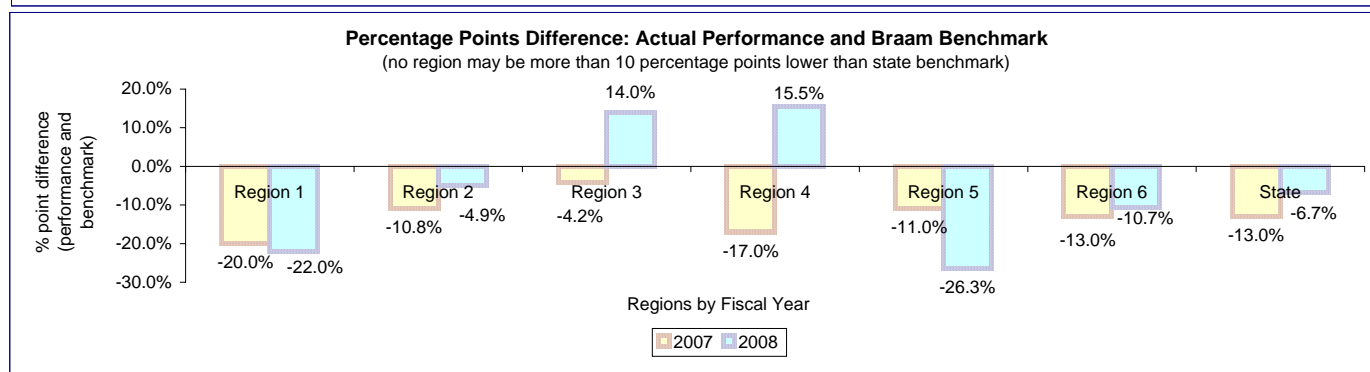
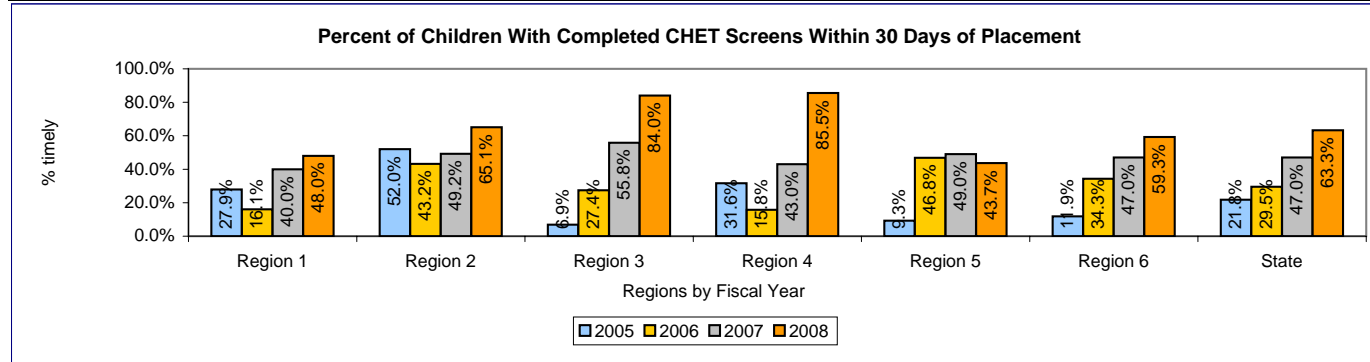
Measure Description:
 Previously, the department reported to the Braam Panel the average caseload size. The reporting for this measure changed to reflect the percent of social workers who are assigned to children in the Braam Class and who have 18 or fewer cases on their caseload. Cases are weighted by agreement with the Braam Panel. While the department can affect the numbers of active cases through permanency planning efforts as well as their distribution among social workers, this measure is also very dependent on available social work FTEs funded by the Legislature.



data file

Report FY	Measure	Region 1	Region 2	Region 3	Region 4	Region 5	Region 6	State
2005	Actual Performance	27.9%	52.0%	6.9%	31.6%	9.3%	11.9%	21.8%
	Baseline	0.0%	0.0%	0.0%	0.0%	0.0%	0.0%	0.0%
	Actual % Change from Prior Yr	0.0%	0.0%	0.0%	0.0%	0.0%	0.0%	0.0%
	% Point Difference (actual - benchmark)	na	na	na	na	na	na	na
2006	Actual Performance	16.1%	43.2%	27.4%	15.8%	46.8%	34.3%	29.5%
	Baseline	0.0%	0.0%	0.0%	0.0%	0.0%	0.0%	0.0%
	Actual % Change from Prior Yr	-42.3%	-16.9%	297.1%	-50.0%	403.2%	188.2%	35.3%
	% Point Difference (actual - benchmark)	0.0%	0.0%	0.0%	0.0%	0.0%	0.0%	0.0%
2007	Actual Performance	40.0%	49.2%	55.8%	43.0%	49.0%	47.0%	47.0%
	Benchmark	60.0%	60.0%	60.0%	60.0%	60.0%	60.0%	60.0%
	Actual % Change from Prior Yr	148.4%	13.9%	103.6%	172.2%	4.7%	37.0%	59.3%
	% Point Difference (actual - benchmark)	-20.0%	-10.8%	-4.2%	-17.0%	-11.0%	-13.0%	-13.0%
2008	Actual Performance	48.0%	65.1%	84.0%	85.5%	43.7%	59.3%	63.3%
	Benchmark	70.0%	70.0%	70.0%	70.0%	70.0%	70.0%	70.0%
	Actual % Change from Prior Yr	20.0%	32.4%	50.6%	98.9%	-10.9%	26.1%	34.6%
	% Point Difference (actual - benchmark)	-22.0%	-4.9%	14.0%	15.5%	-26.3%	-10.7%	-6.7%

Measure Description:
Percent of children requiring CHET screens with a completed screen between -30 and +30 days of OPD, by fiscal year of entry (per Kidscreen database). NOTE: Data provided for information only based on a CA definition of CHET completion that is no longer approved by the Braam Panel. Performance based on the new definition of a completed CHET will be reported in the FY09 report. **Additional positions were provided by the Legislature in the 2008 session to complete CHET screens. All of those positions have now been filled with the exception of a part-time position in Region 5.**



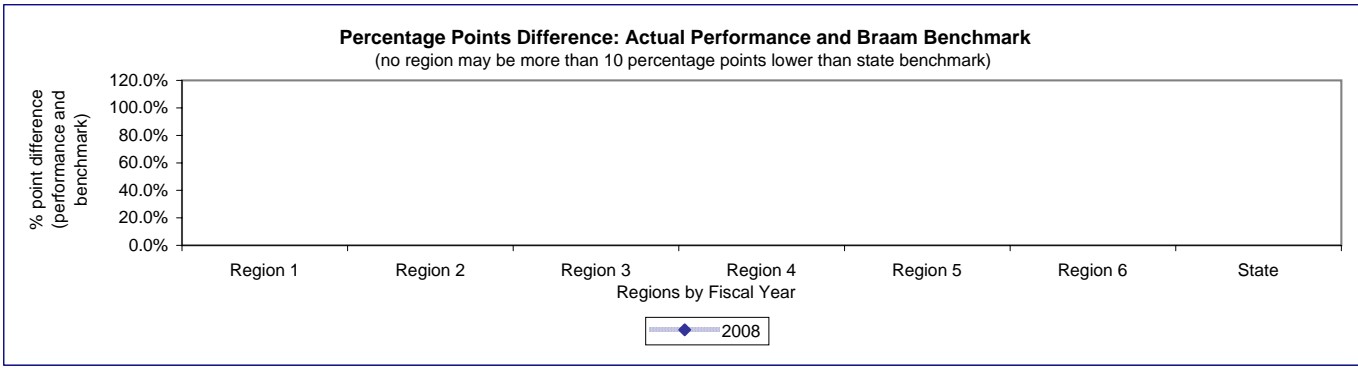
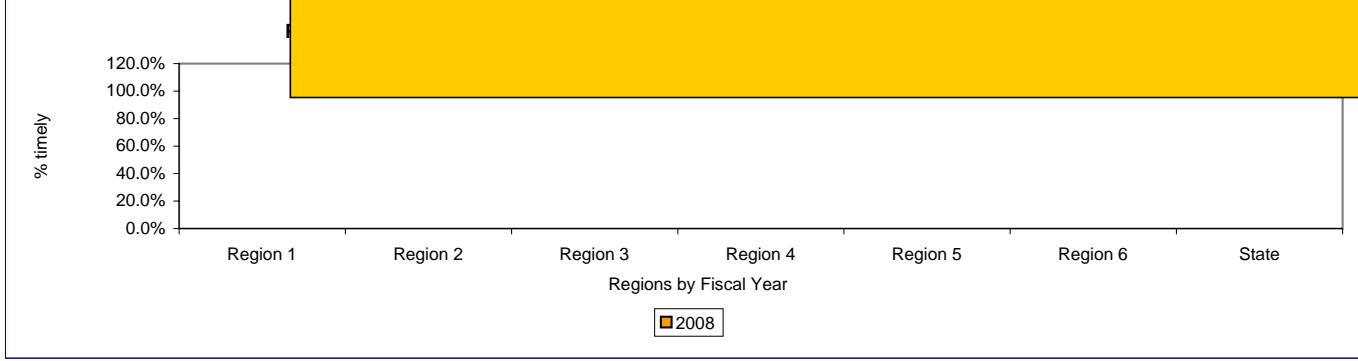
data file

3.B.1.3 Plan page 14

Report FY	Measure	Region 1	Region 2	Region 3	Region 4	Region 5	Region 6	State
2005	Actual Performance % 60 days							
	Actual %							
	% Point Difference							
2006	Actual %							
	% Point Difference							
2007	Actual %							
	% Point Difference							
2008	Actual %							
	% Point Difference							

Measure Description:
 Percent of children requiring CHET screens with a shared planning meeting to review CHET results within 60 days of entry, by fiscal year of entry.

No valid data available. CA staff have been inconsistent in sending in Shared Planning Meeting forms. Once FamLink is operational, it is planned to get this information from FamLink and the CHET database.



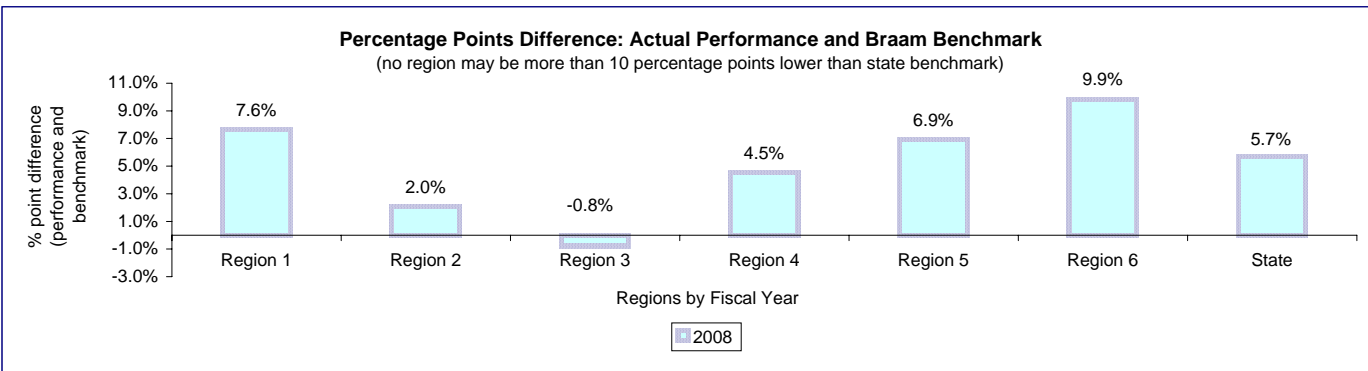
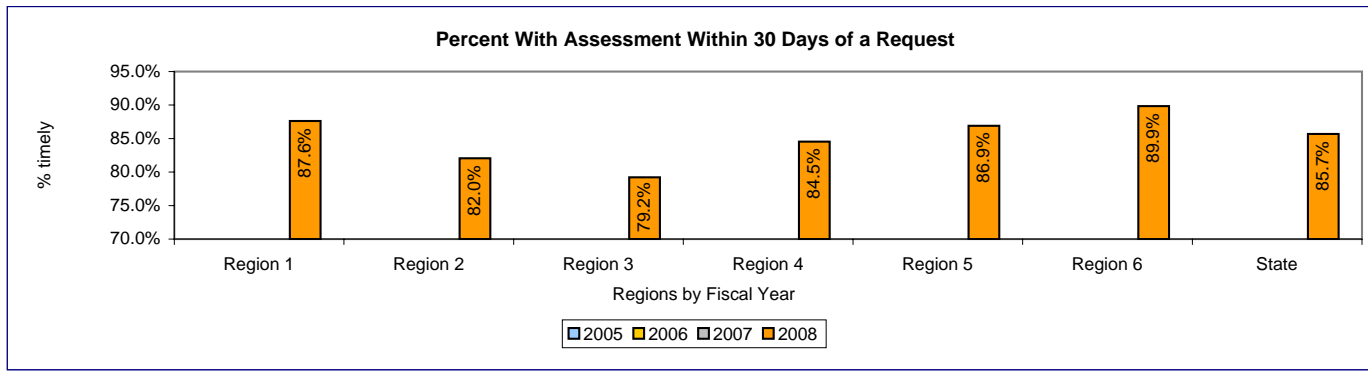
[data file](#)

3.B.3.1 Plan page 16

Report FY	Measure	Region 1	Region 2	Region 3	Region 4	Region 5	Region 6	State
2005	Actual Performance							
	Baseline							
	Actual % Change from Prior Yr							
	% Point Difference (actual - benchmark)							
2006	Actual Performance							
	Benchmark	70.0%	70.0%	70.0%	70.0%	70.0%	70.0%	70.0%
	Actual % Change from Prior Yr							
	% Point Difference (actual - benchmark)							
2007	Actual Performance							
	Benchmark	75.0%	75.0%	75.0%	75.0%	75.0%	75.0%	75.0%
	Actual % Change from Prior Yr							
	% Point Difference (actual - benchmark)							
2008	Actual Performance							
	Benchmark	80.0%	80.0%	80.0%	80.0%	80.0%	80.0%	80.0%
	Actual % Change from Prior Yr							
	% Point Difference (actual - benchmark)	7.6%	2.0%	-0.8%	4.5%	6.9%	9.9%	5.7%

Measure Description:
 Based on date of service request and date of RSN intake from records provided by HRSA for all children in care during the FY with a service request. Measure evaluates if children in care anytime during FY08 had a service request if so, the days between their service request(s) and their intake dates. If any intake date is within 30 days of any service request date the child is counted as compliant on this measure. NOTE: While service request data do not specify the type of service that was requested, MHD reports that these dates all represent requests for assessment/re-assessment (aka 'intakes'). Children and youth can have multiple request dates and intake dates in the data submitted by HRSA. Region designations only represent the placement region, not the region in which the child was residing at the time of the service request. Pierce County Data are not available for this measure because an RSN is not currently contracted. However, the providers continue to operate under the contractual obligation to provide an assessment within 10 days of receiving the request.

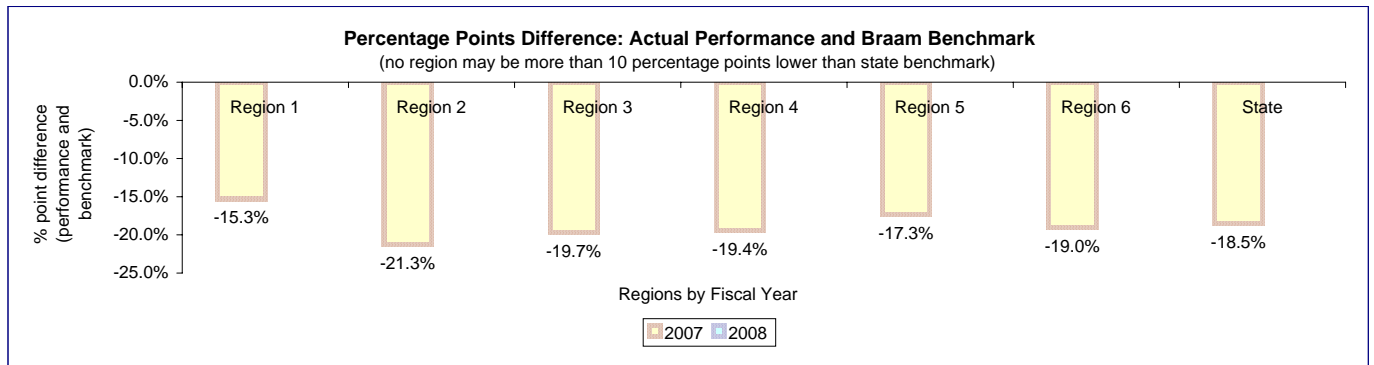
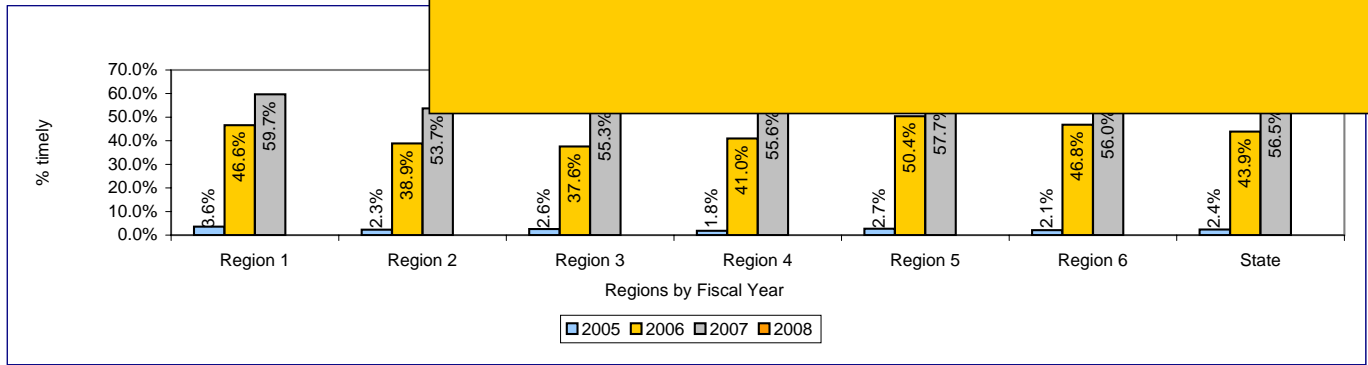
Given prior performance of Pierce County in the past, the Panel agreed to substitute the statewide average for Pierce County as the measure until an RSN is operational (anticipated in FY2010) and actual data can be reported.



[data file](#)

Report FY	Measure	Region 1	Region 2	Region 3	Region 4	Region 5	Region 6	State	Measure Description:
2005	Actual Performance	% timely	3.6%	2.3%	2.6%	1.8%	2.7%	2.1%	Percent of children in care for at least one year during the fiscal year with an EPSDT date within the last 365
	Baseline	0.0%	0.0%	0.0%	0.0%	0.0%	0.0%	0.0%	
2006	Actual Performance								
	Baseline								
2007	Actual Performance								
	Baseline								
2008	Actual Performance								
	Baseline								

HRSA data from from billings and encounters will not become available until Spring 2009 for FY08

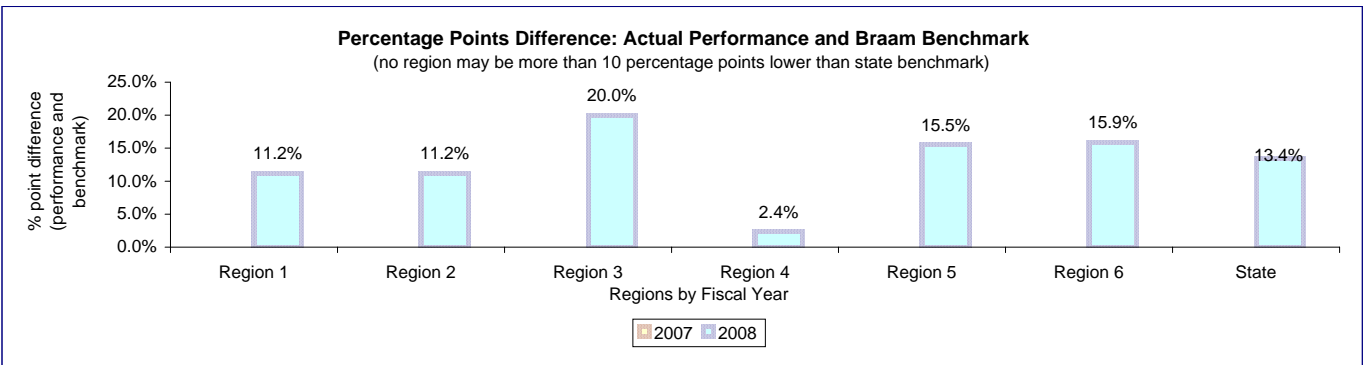
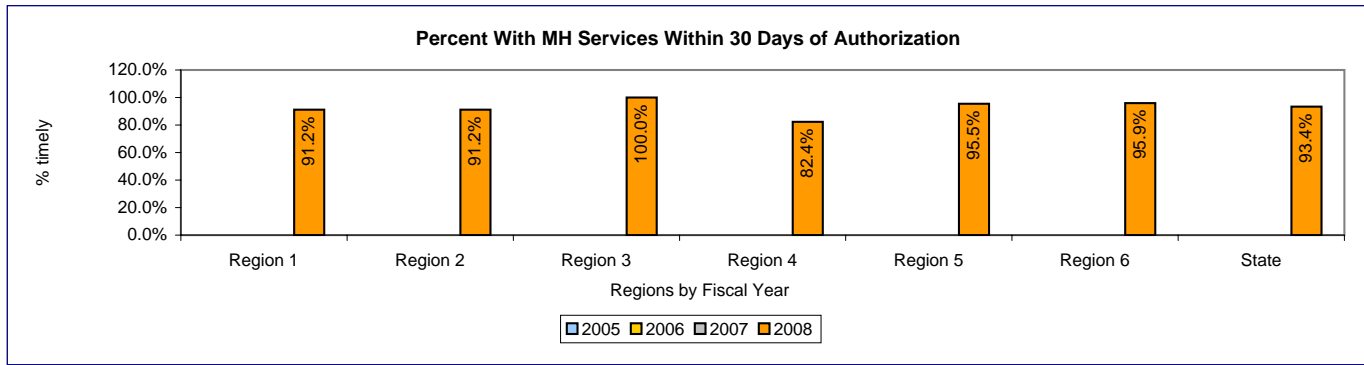


data file

3.B.3.3 Plan page 16

Report FY	Measure	Region 1	Region 2	Region 3	Region 4	Region 5	Region 6	State
2005	Actual Performance							
	Baseline							
	Actual % Change from Prior Yr % Point Difference (actual - benchmark)							
2006	Actual Performance							
	Benchmark	70.0%	70.0%	70.0%	70.0%	70.0%	70.0%	70.0%
	Actual % Change from Prior Yr % Point Difference (actual - benchmark)							
2007	Actual Performance							
	Benchmark	75.0%	75.0%	75.0%	75.0%	75.0%	75.0%	75.0%
	Actual % Change from Prior Yr % Point Difference (actual - benchmark)							
2008	Actual Performance							
	Benchmark	80.0%	80.0%	80.0%	80.0%	80.0%	80.0%	80.0%
	Actual % Change from Prior Yr % Point Difference (actual - benchmark)	11.2%	11.2%	20.0%	2.4%	15.5%	15.9%	13.4%

Measure Description:
 Based on date of RSN intake and first non-crisis service where an authorization for services followed an intake from records provided by HRSA for all children in care during the FY. Measure evaluates if children in care anytime during FY08 had an intake and a subsequent authorization for services and if so the days between their intake and their first noncrisis service date. If the first post-intake service date is within 30 days of the intake date the child is counted as compliant on this measure.
 NOTE:
 Children and youth can have multiple intake dates and service dates in the data submitted by HRSA. Region designations only represent the placement region, not the region in which the child was residing at the time of the intake, service authorization or service. Because Pierce county data on authorizations were not available, compliance for children placed in Pierce County is based on the days from the last intake service date to the first non-crisis service date.

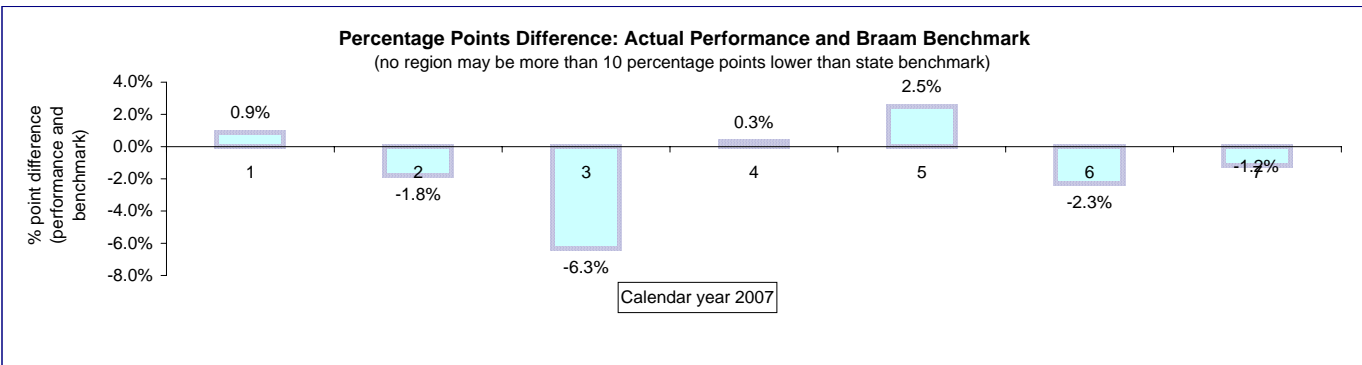
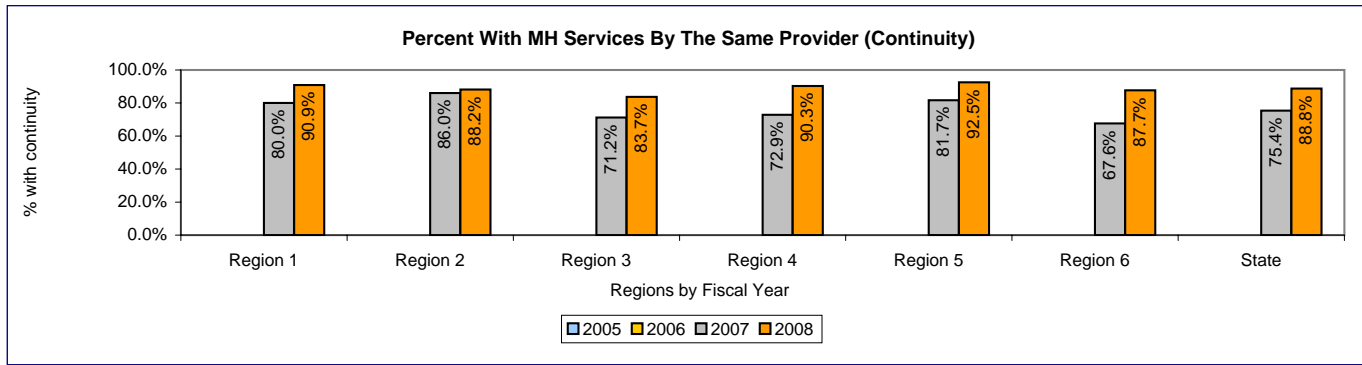


[data file](#)

3.B.4.1 Plan page 18

Report FY	Measure	Region 1	Region 2	Region 3	Region 4	Region 5	Region 6	State
2005	Actual Performance							
	Baseline							
	Actual % Change from Prior Yr % Point Difference (actual - benchmark)							
2006	Actual Performance							
	Baseline							
	Actual % Change from Prior Yr % Point Difference (actual - benchmark)							
2007	Actual Performance (CY06)	80.0%	86.0%	71.2%	72.9%	81.7%	67.6%	75.4%
	Baseline							
	Actual % Change from Prior Yr % Point Difference (actual - benchmark)	na na	na na	na na	na na	na na	na na	na na
2008	Actual Performance (CY07)	90.9%	88.2%	83.7%	90.3%	92.5%	87.7%	88.8%
	Benchmark	90.0%	90.0%	90.0%	90.0%	90.0%	90.0%	90.0%
	Actual % Change from Prior Yr % Point Difference (actual - benchmark)	13.6% 0.9%	2.6% -1.8%	17.6% -6.3%	23.9% 0.3%	13.2% 2.5%	29.7% -2.3%	17.8% -1.2%

Measure Description:
 Based on foster parent survey results for the calendar year prior to the report fiscal year. For example, the 2008 report provides a look at performance based on the 2007 calendar year foster parent survey, conducted in 2008. This survey asked licensed and unlicensed caregivers during calendar year 2007 about their experiences and perceptions while providing care during 2007.

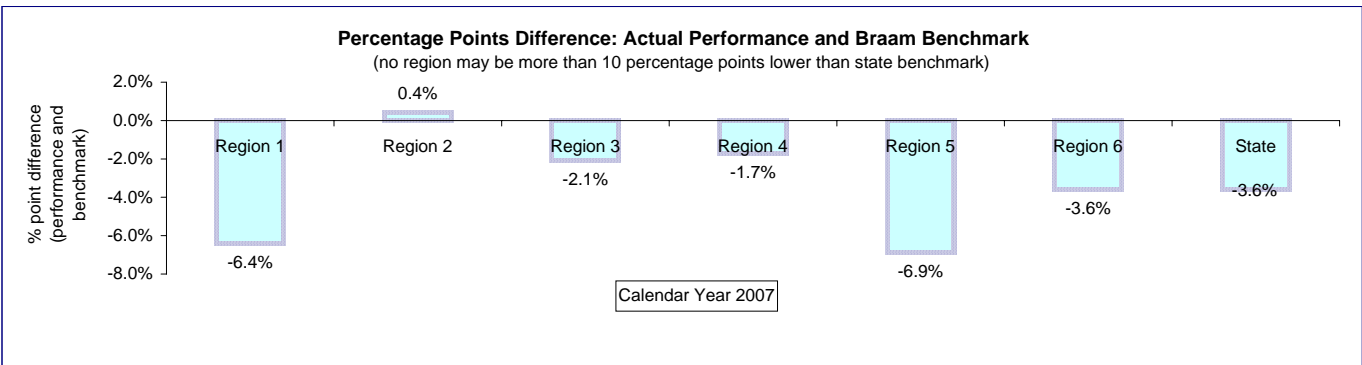
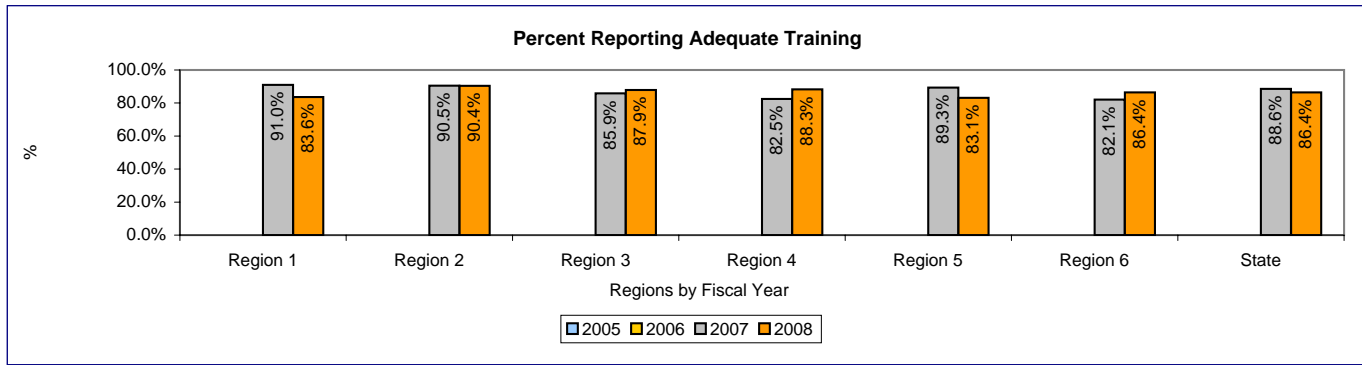


[data file](#)

3.C.1.1 Plan page 21

Report FY	Measure	Region 1	Region 2	Region 3	Region 4	Region 5	Region 6	State
2005	Actual Performance							
	Baseline							
	Actual % Change from Prior Yr % Point Difference (actual - benchmark)							
2006	Actual Performance							
	Baseline							
	Actual % Change from Prior Yr % Point Difference (actual - benchmark)							
2007	Actual Performance (CY06)	91.0%	90.5%	85.9%	82.5%	89.3%	82.1%	88.6%
	Baseline							
	Actual % Change from Prior Yr % Point Difference (actual - benchmark)	na na	na na	na na	na na	na na	na na	na na
2008	Actual Performance (CY07)	83.6%	90.4%	87.9%	88.3%	83.1%	86.4%	86.4%
	Benchmark	90.0%	90.0%	90.0%	90.0%	90.0%	90.0%	90.0%
	Actual % Change from Prior Yr % Point Difference (actual - benchmark)	-8.1% -6.4%	-0.1% 0.4%	2.3% -2.1%	7.0% -1.7%	-6.9% -6.9%	5.2% -3.6%	-2.5% -3.6%

Measure Description:
 Based on foster parent survey results for the calendar year prior to the report fiscal year. For example, the 2008 report provides a look at performance based on the 2007 calendar year foster parent survey, conducted in 2008. This survey asked licensed and unlicensed caregivers during calendar year 2007 about their experiences and perceptions while providing care during 2007.

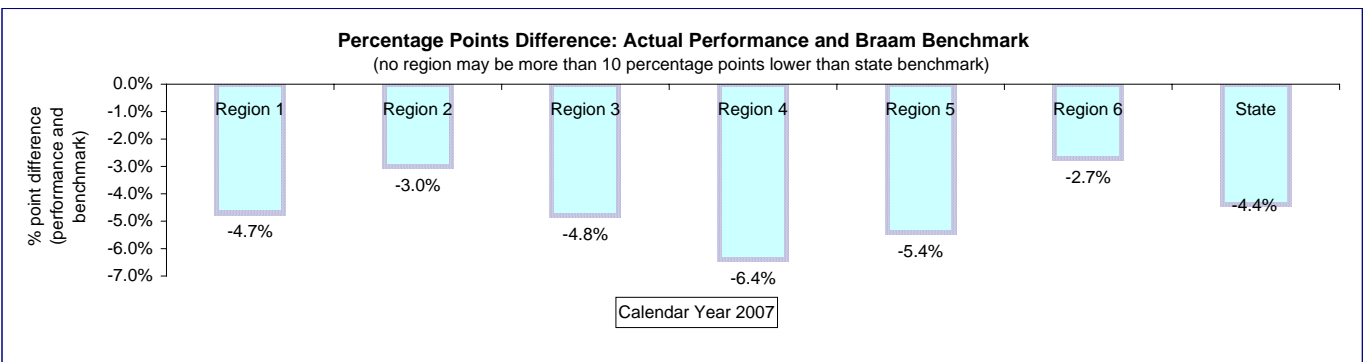
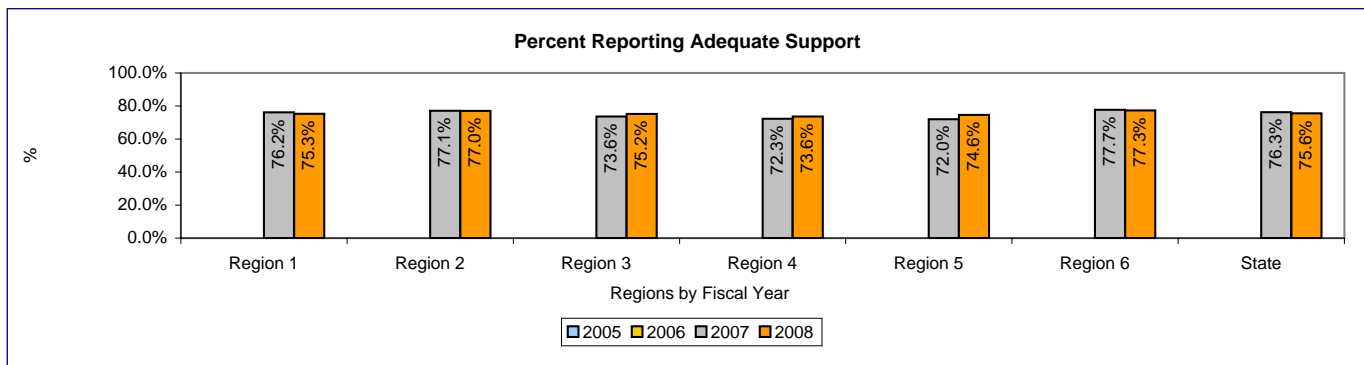


[data file](#)

3.C.1.2 Plan page 21

Report FY	Measure	Region 1	Region 2	Region 3	Region 4	Region 5	Region 6	State
2005	Actual Performance							
	Baseline							
	Actual % Change from Prior Yr % Point Difference (actual - benchmark)							
2006	Actual Performance							
	Baseline							
	Actual % Change from Prior Yr % Point Difference (actual - benchmark)							
2007	Actual Performance (CY06)	76.2%	77.1%	73.6%	72.3%	72.0%	77.7%	76.3%
	Baseline							
	Actual % Change from Prior Yr % Point Difference (actual - benchmark)	na na	na na	na na	na na	na na	na na	na na
2008	Actual Performance (CY07)	75.3%	77.0%	75.2%	73.6%	74.6%	77.3%	75.6%
	Benchmark	80.0%	80.0%	80.0%	80.0%	80.0%	80.0%	80.0%
	Actual % Change from Prior Yr % Point Difference (actual - benchmark)	-1.2% -4.7%	-0.1% -3.0%	2.2% -4.8%	1.8% -6.4%	3.6% -5.4%	-0.5% -2.7%	-0.9% -4.4%

Measure Description:
 Based on foster parent survey results for the calendar year prior to the report fiscal year. For example, the 2008 report provides a look at performance based on the 2007 calendar year foster parent survey, conducted in 2008. This survey asked licensed and unlicensed caregivers during calendar year 2007 about their experiences and perceptions while providing care during 2007. **Difference between CY2006 and CY2007 is not statistically significant.**

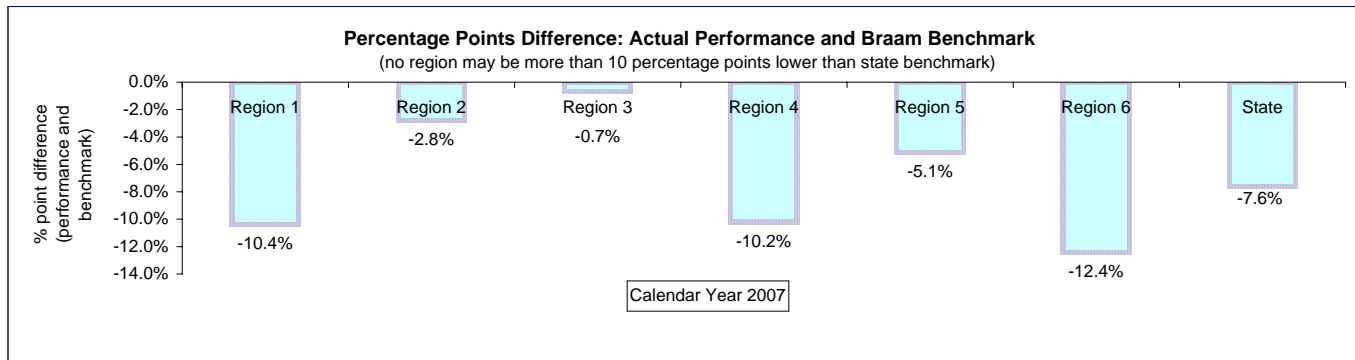
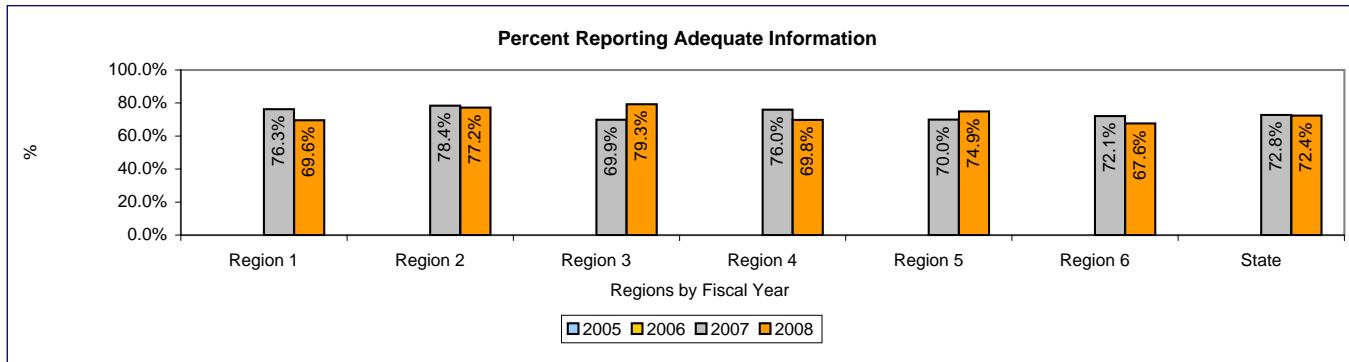


[data file](#)

3.C.1.3 Plan page 22

Report FY	Measure	Region 1	Region 2	Region 3	Region 4	Region 5	Region 6	State
2005	Actual Performance							
	Baseline							
	Actual % Change from Prior Yr % Point Difference (actual - benchmark)							
2006	Actual Performance							
	Baseline							
	Actual % Change from Prior Yr % Point Difference (actual - benchmark)							
2007	Actual Performance (CY06)	76.3%	78.4%	69.9%	76.0%	70.0%	72.1%	72.8%
	Baseline							
	Actual % Change from Prior Yr % Point Difference (actual - benchmark)	na na	na na	na na	na na	na na	na na	na na
2008	Actual Performance (CY07)	69.6%	77.2%	79.3%	69.8%	74.9%	67.6%	72.4%
	Benchmark	80.0%	80.0%	80.0%	80.0%	80.0%	80.0%	80.0%
	Actual % Change from Prior Yr % Point Difference (actual - benchmark)	-8.8% -10.4%	-1.5% -2.8%	13.4% -0.7%	-8.2% -10.2%	7.0% -5.1%	-6.2% -12.4%	-0.5% -7.6%

Measure Description:
 Based on foster parent survey results for the calendar year prior to the report fiscal year. For example, the 2008 report provides a look at performance based on the 2007 calendar year foster parent survey, conducted in 2008. This survey asked licensed and unlicensed caregivers during calendar year 2007 about their experiences and perceptions while providing care during 2007. **Difference between CY2006 and CY2007 is not statistically significant.**

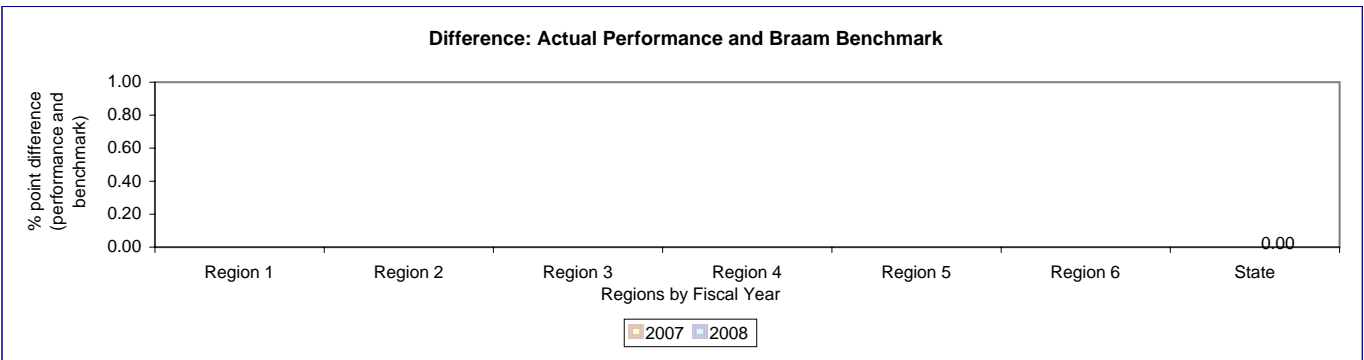
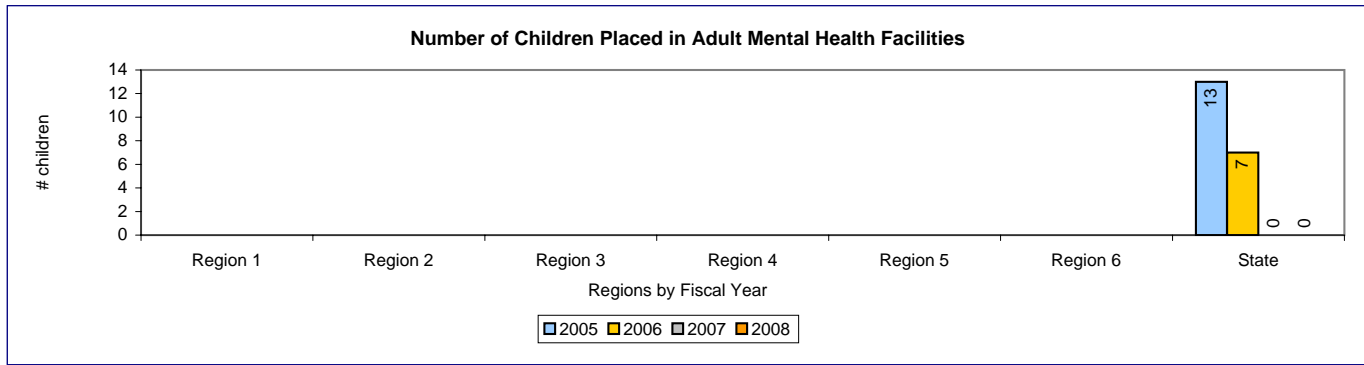


[data file](#)

3.D.1.1 Plan page 25

Report FY	Measure	Region 1	Region 2	Region 3	Region 4	Region 5	Region 6	State
2005	Actual Performance							13
	Baseline							
	Actual % Change from Prior Yr Difference (actual - benchmark)							
2006	Actual Performance							7
	Baseline							
	Actual % Change from Prior Yr Difference (actual - benchmark)							
2007	Actual Performance							0
	Benchmark							
	Actual % Change from Prior Yr Difference (actual - benchmark)							-100.0%
2008	Actual Performance							0
	Benchmark							
	Actual % Change from Prior Yr Difference (actual - benchmark)							0.00

Measure Description:
Data provided by the Mental Health Division, HRSA, DSHS.



[data file](#)

December 2, 2008

MEMO TO: Chris Robinson and Lee Doran, Children's Administration

FROM: Robin McIlvaine, Mental Health Division

RE: BRAAM COMPLIANCE III. B. (Mental Health) Goal 1, Outcome 1

cc: Kai Wong, MHD Decision Support, David Weston

“Children will not be placed in institutions not designed for placement of foster children, such as adult mental hospitals or detox facilities where children and adults are co-mingled.”

Criteria used for this query:

- Children and youth under 18 years of age
- With program identifications of “D”, “F”, and “R”. (foster children categories)
- Admitted to Evaluation and Treatment Centers or Community Hospitals in FY 2008 (July 1, 2007 through June 30, 2008)

Verified:

All Evaluation and Treatment Centers (E&Ts) and Communities hospitals to which foster children were admitted in FY 2007 have psychiatric units strictly specified for children.

Voluntary Admissions:

Number in Evaluation and Treatment Centers paid by the RSNs: 12

Number in Community Hospitals based on MMIS Claims data: 159

Involuntary Admissions:

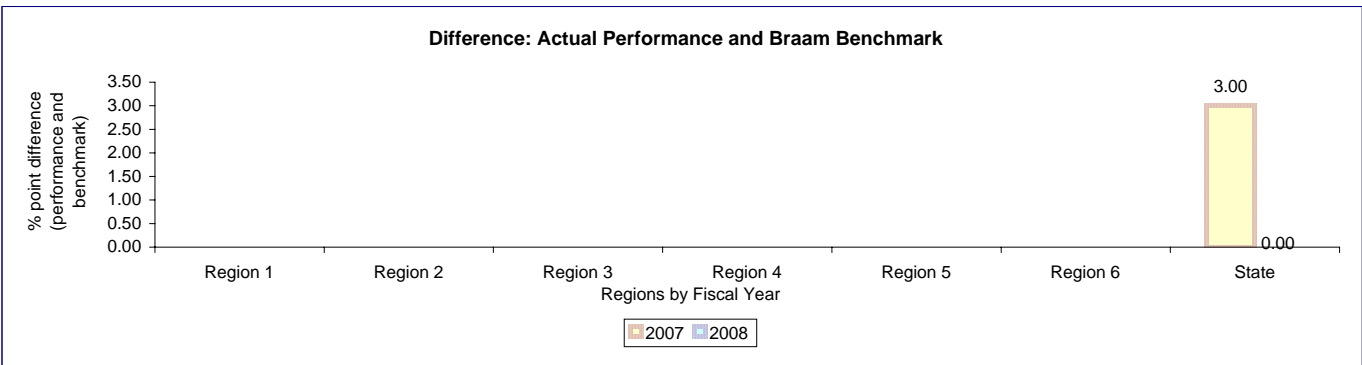
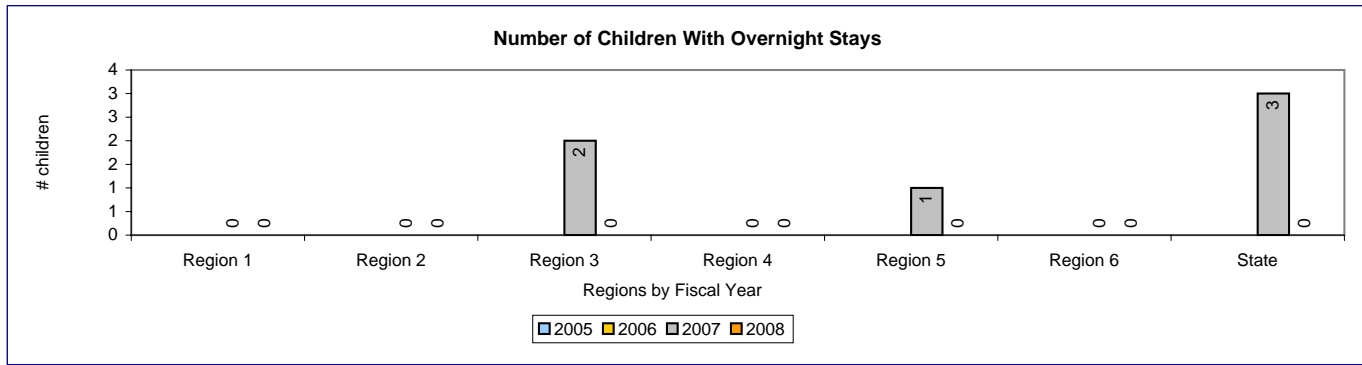
Number in Evaluation and Treatment Centers: 18

Number in Community Hospitals: 42

3.D.1.2 Plan page 25

Report FY	Measure	Region 1	Region 2	Region 3	Region 4	Region 5	Region 6	State
2005	Actual Performance							
	Baseline							
	Actual % Change from Prior Yr Difference (actual - benchmark)							
2006	Actual Performance							
	Baseline							
	Actual % Change from Prior Yr Difference (actual - benchmark)							
2007	Actual Performance	0	0	2	0	1	0	3
	Benchmark							0
	Actual % Change from Prior Yr Difference (actual - benchmark)							#DIV/0! 3.00
2008	Actual Performance	0	0	0	0	0	0	0
	Benchmark							0
	Actual % Change from Prior Yr Difference (actual - benchmark)							-100.0% 0.00

Measure Description:
 The number of youth with stays in hotels, motels, apartments or offices, based on documentation in Administrative Incident Reporting System (AIRS). Source: AIRS report. **Please see the attached list showing the specifics for three youth who were not in placements overnight, but stayed in hotels with staff supervision.**



[data file](#)

Children's Administration
 Placement Exceptions Documented in AIRS
 July 1, 2007 - June 30, 2008

Date	Region	Age of Child	Placement	Details	Comment
8-29-07	5	13 yrs	Hotel 1 night; Placed in receiving home next day (8-30-07).	<p>Private agency case worker attempted to locate placement for youth after private agency foster home requested child be moved. Placement could not be located that evening resulting in hotel stay for one night with the private agency worker supervising. Private agency case worker located receiving home the following day.</p> <ol style="list-style-type: none"> 1. An appropriate licensed home or relative was not available for this child - Yes 2. Administrative approval was granted by the RA - No, Private agency addressed the situation independently and notified the department after the child had been placed. 3. Adequate supervision was provided as required in the Department's 11/04 memo to staff - Yes 	<p>Children's Administration was not notified of the placement until after it occurred. The private agency, on their own initiative, took the child to the hotel with their staff.</p> <p>If CA had been notified of this problem, then the administrator would have approved the placement for one night as it met the criteria for approval.</p>

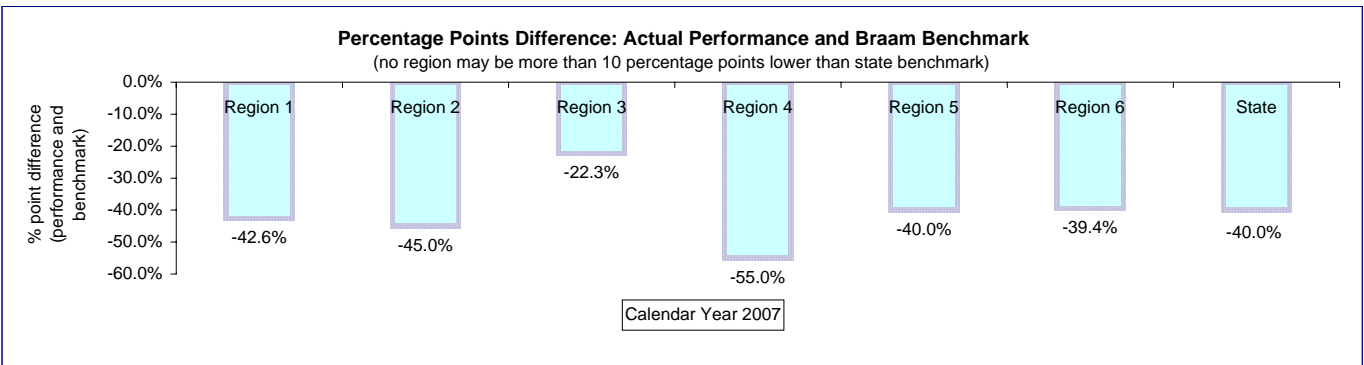
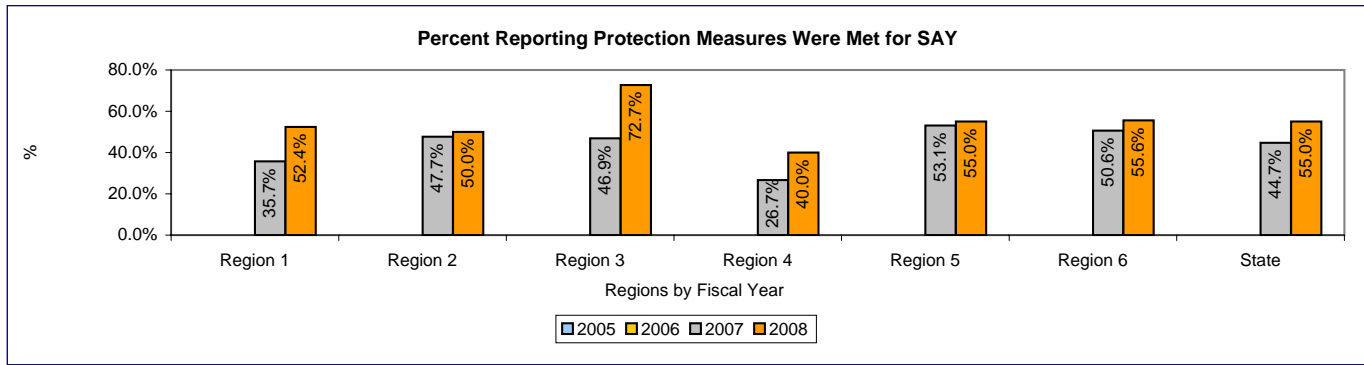
Date	Region	Age of Child	Placement	Details	Comment
10-22-07	3	15 yrs	Hotel 2 nights; DCFS office during daytime.	<p>Youth released from SCRC. BRS eligible but no placement available due to physically aggressive behaviors and SAY status. The youth, with staff supervision, stayed in a hotel 10-22 and 10-23. On 10-24-07 youth left office and was missing from care until he returned to SCRC on 10-25-07. Youth is currently in JRA facility.</p> <p>Note: Two DCFS staff supervised both this youth and 16-year-old youth mentioned below in one hotel room.</p> <ol style="list-style-type: none"> 1. An appropriate licensed home or relative was not available for this child - Yes 2. Administrative approval was granted by the RA - Yes 3. Adequate supervision was provided as required in the Department's 11/04 memo to staff - Yes 	

Date	Region	Age of Child	Placement	Details	Comment
10-22-07	3	16 yrs	Hotel 2 nights; DCFS office during daytime.	<p>Youth released from SCRC. No placement available due to assaultive behavior and mental health needs. The youth, with staff supervision, stayed in a hotel 10-22 and 10-23. On 10-24-07, youth left the office with above youth and did not return. Youth is currently in BRS placement in Yakima.</p> <ol style="list-style-type: none"> 1. An appropriate licensed home or relative was not available for this child - Yes 2. Administrative approval was granted RA - Yes 3. Adequate supervision was provided as required in the Department's 11/04 memo to staff - Yes 	

3.D.1.3 Plan page 26

Report FY	Measure	Region 1	Region 2	Region 3	Region 4	Region 5	Region 6	State
2005	Actual Performance							
	Baseline							
	Actual % Change from Prior Yr							
	% Point Difference (actual - benchmark)							
2006	Actual Performance							
	Baseline							
	Actual % Change from Prior Yr							
	% Point Difference (actual - benchmark)							
2007	Actual Performance (CY06)	35.7%	47.7%	46.9%	26.7%	53.1%	50.6%	44.7%
	Benchmark	95.0%	95.0%	95.0%	95.0%	95.0%	95.0%	95.0%
	Actual % Change from Prior Yr	na	na	na	na	na	na	na
	% Point Difference (actual - benchmark)	-59.3%	-47.3%	-48.1%	-68.3%	-41.9%	-44.4%	-50.3%
2008	Actual Performance (CY07)	52.4%	50.0%	72.7%	40.0%	55.0%	55.6%	55.0%
	Benchmark	95.0%	95.0%	95.0%	95.0%	95.0%	95.0%	95.0%
	Actual % Change from Prior Yr	46.8%	4.8%	55.0%	49.8%	3.6%	9.9%	23.0%
	% Point Difference (actual - benchmark)	-42.6%	-45.0%	-22.3%	-55.0%	-40.0%	-39.4%	-40.0%

Measure Description:
 Based on foster parent survey results for the calendar year prior to the report fiscal year. For example, the 2008 report provides a look at performance based on the 2007 calendar year foster parent survey, conducted in 2008. This survey asked licensed and unlicensed caregivers during calendar year 2007 about their experiences and perceptions while providing care during 2007. **In the new management information system, Children's Administration will be able to identify these youth and specifically review their situations to ensure a supervision plan is in place and the caregiver has necessary training. CA will work with the foster parent survey staff to ensure clarity as to which children/youth foster parents are responding to with this question.**

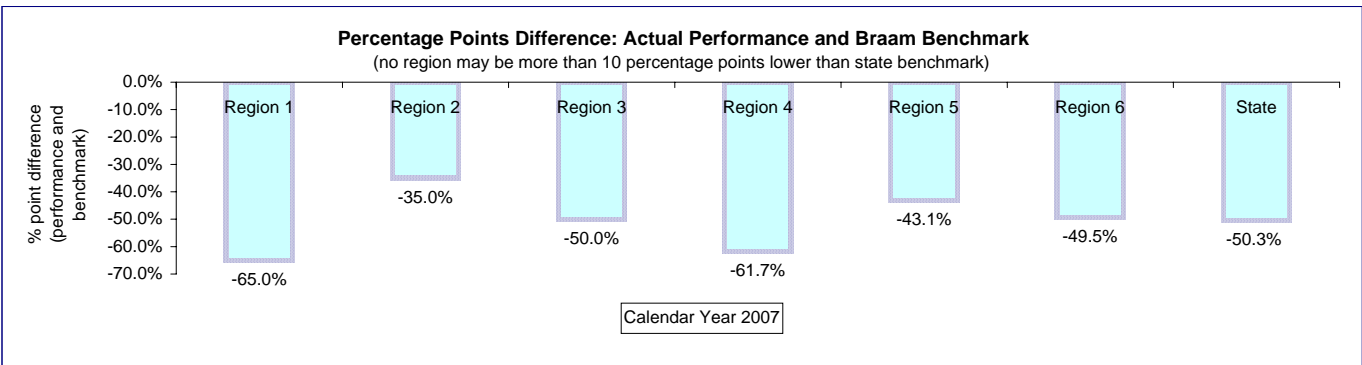
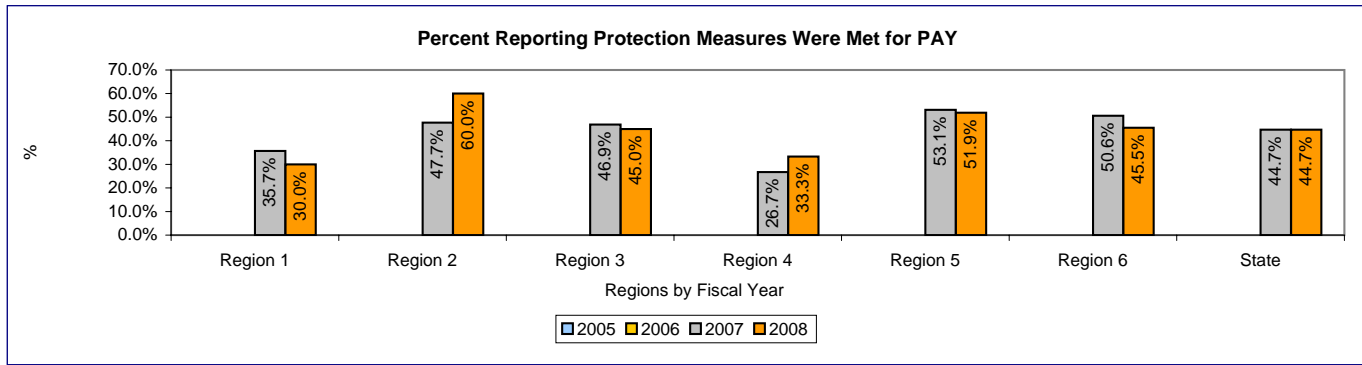


[data file](#)

3.D.1.4 Plan page 26

Report FY	Measure	Region 1	Region 2	Region 3	Region 4	Region 5	Region 6	State
2005	Actual Performance							
	Baseline							
	Actual % Change from Prior Yr							
	% Point Difference (actual - benchmark)							
2006	Actual Performance							
	Baseline							
	Actual % Change from Prior Yr							
	% Point Difference (actual - benchmark)							
2007	Actual Performance (CY06)	35.7%	47.7%	46.9%	26.7%	53.1%	50.6%	44.7%
	Benchmark	95.0%	95.0%	95.0%	95.0%	95.0%	95.0%	95.0%
	Actual % Change from Prior Yr	na	na	na	na	na	na	na
	% Point Difference (actual - benchmark)	-59.3%	-47.3%	-48.1%	-68.3%	-41.9%	-44.4%	-50.3%
2008	Actual Performance (CY07)	30.0%	60.0%	45.0%	33.3%	51.9%	45.5%	44.7%
	Benchmark	95.0%	95.0%	95.0%	95.0%	95.0%	95.0%	95.0%
	Actual % Change from Prior Yr	-16.0%	25.8%	-4.1%	24.7%	-2.3%	-10.1%	0.0%
	% Point Difference (actual - benchmark)	-65.0%	-35.0%	-50.0%	-61.7%	-43.1%	-49.5%	-50.3%

Measure Description:
 Based on foster parent survey results for the calendar year prior to the report fiscal year. For example, the 2008 report provides a look at performance based on the 2007 calendar year foster parent survey, conducted in 2008. This survey asked licensed and unlicensed caregivers during calendar year 2007 about their experiences and perceptions while providing care during 2007. **In the new management information system, Children's Administration will be able to identify these youth and specifically review their situations to ensure a supervision plan is in place and the caregiver has necessary training. CA will work with the foster parent survey staff to ensure clarity as to which children/youth foster parents are responding to with this question.**

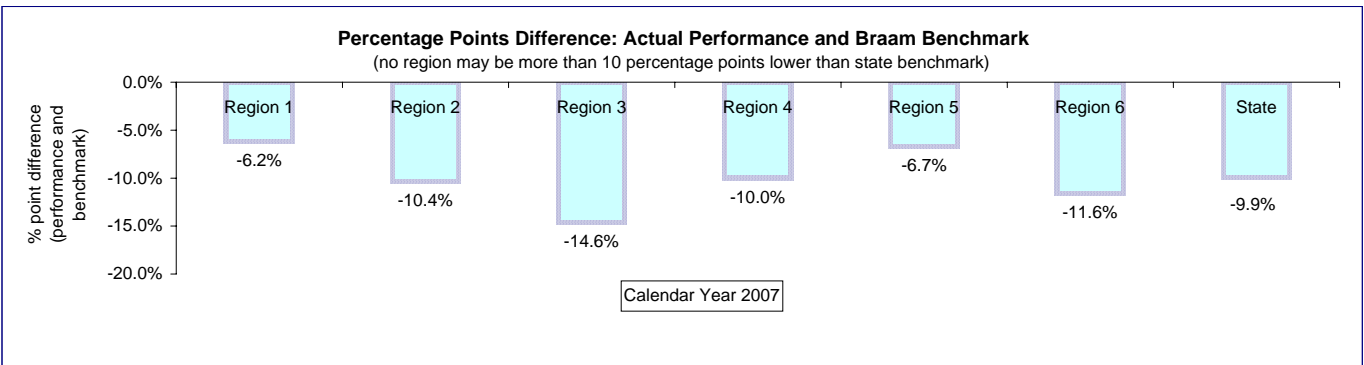
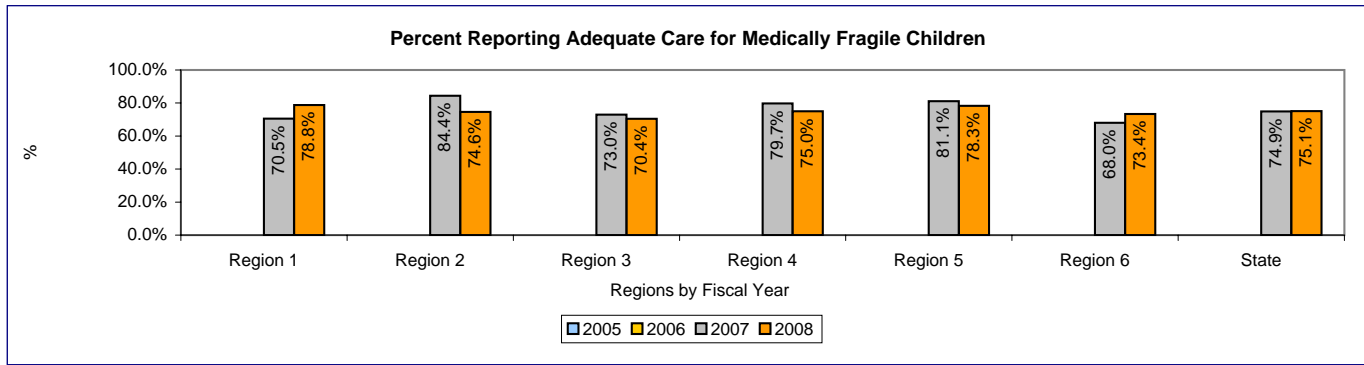


[data file](#)

3.D.1.5 Plan page 27

Report FY	Measure	Region 1	Region 2	Region 3	Region 4	Region 5	Region 6	State
2005	Actual Performance							
	Baseline							
	Actual % Change from Prior Yr % Point Difference (actual - benchmark)							
2006	Actual Performance							
	Baseline							
	Actual % Change from Prior Yr % Point Difference (actual - benchmark)							
2007	Actual Performance (CY06)	70.5%	84.4%	73.0%	79.7%	81.1%	68.0%	74.9%
	Baseline							
	Actual % Change from Prior Yr % Point Difference (actual - benchmark)	na na	na na	na na	na na	na na	na na	na na
2008	Actual Performance (CY07)	78.8%	74.6%	70.4%	75.0%	78.3%	73.4%	75.1%
	Benchmark	85.0%	85.0%	85.0%	85.0%	85.0%	85.0%	85.0%
	Actual % Change from Prior Yr	11.8%	-11.6%	-3.6%	-5.9%	-3.5%	7.9%	0.3%
	% Point Difference (actual - benchmark)	-6.2%	-10.4%	-14.6%	-10.0%	-6.7%	-11.6%	-9.9%

Measure Description:
 Based on foster parent survey results for the calendar year prior to the report fiscal year. For example, the 2008 report provides a look at performance based on the 2007 calendar year foster parent survey, conducted in 2008. This survey asked licensed and unlicensed caregivers during calendar year 2007 about their experiences and perceptions while providing care during 2007. **In the new management information system, Children's Administration will be able to identify these youth and specifically review their situations to ensure a supervision plan is in place and the caregiver has necessary training. CA will work with the foster parent survey staff to ensure clarity as to which children/youth foster parents are responding to with this question.**



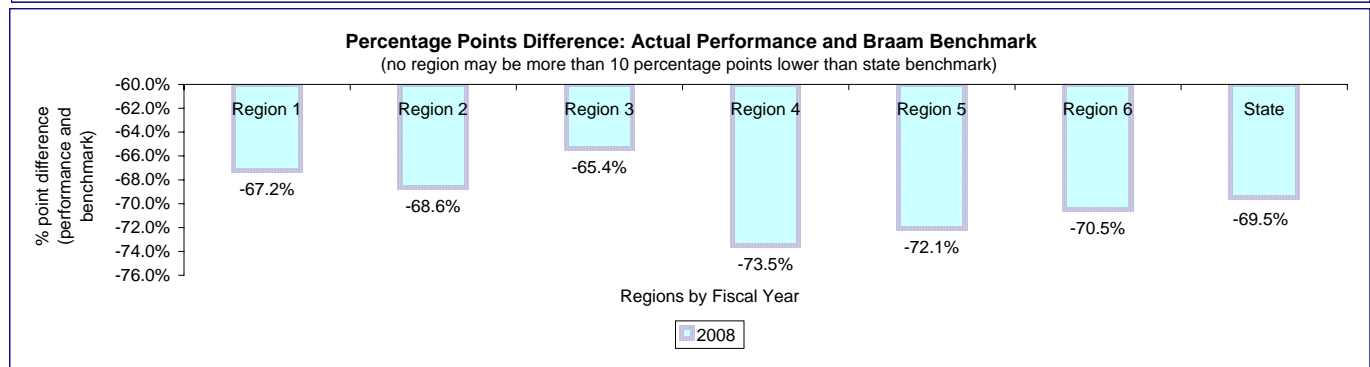
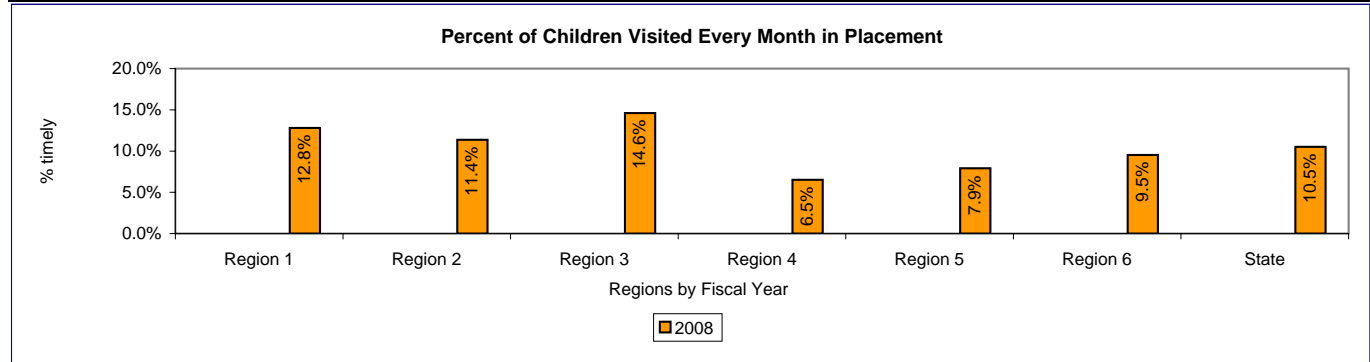
[data file](#)

3.D.1.6 Plan page 27

SW Visits by Race

Report FY	Measure	Region 1	Region 2	Region 3	Region 4	Region 5	Region 6	State
2005	Actual Performance							
	Baseline							
	Actual % Change from Prior Yr							
	% Point Difference (actual - benchmark)							
2006	Actual Performance							
	Baseline							
	Actual % Change from Prior Yr							
	% Point Difference (actual - benchmark)							
2007	Actual Performance							
	Benchmark							
	Actual % Change from Prior Yr							
	% Point Difference (actual - benchmark)							
2008	Actual Performance	12.8%	11.4%	14.6%	6.5%	7.9%	9.5%	10.5%
	Benchmark	80.0%	80.0%	80.0%	80.0%	80.0%	80.0%	80.0%
	Actual % Change from Prior Yr	n/a	n/a	n/a	n/a	n/a	n/a	n/a
	% Point Difference (actual - benchmark)	-67.2%	-68.6%	-65.4%	-73.5%	-72.1%	-70.5%	-69.5%

Measure Description:
 Percent of children who received a health and safety visit each and every month they were in care for a full month during the FY. Estimate based on CAMIS data and logic that emulates federal requirements. No consideration of visit location or span of days between visits. **In September 2008, Children's Administration implemented a policy requiring visits with children every calendar month with no longer than 40 days between health and safety visits. As this measure evaluates if youth received a visit every calendar month they were in placement over the entire fiscal year, it is not anticipated that Children's Administration will achieve a significant increase in this measure until FY2010. Monthly visit information is provided to the Panel.**

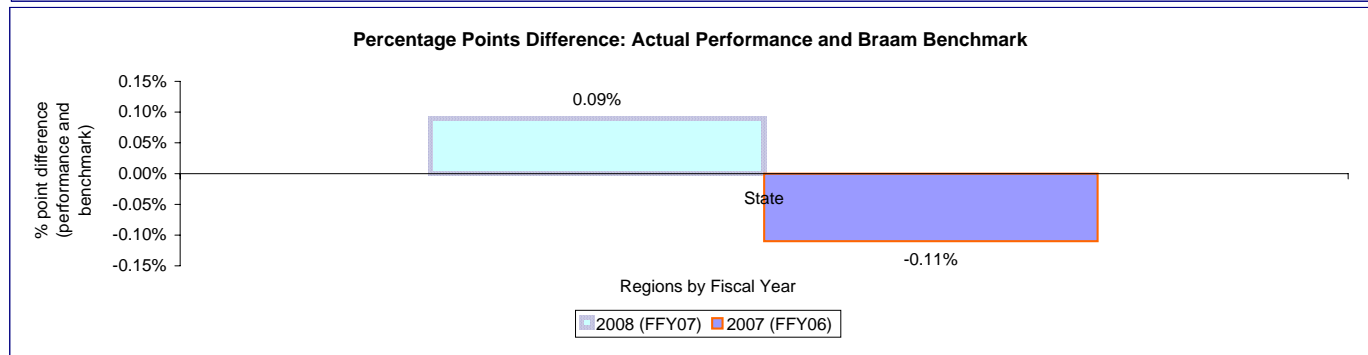
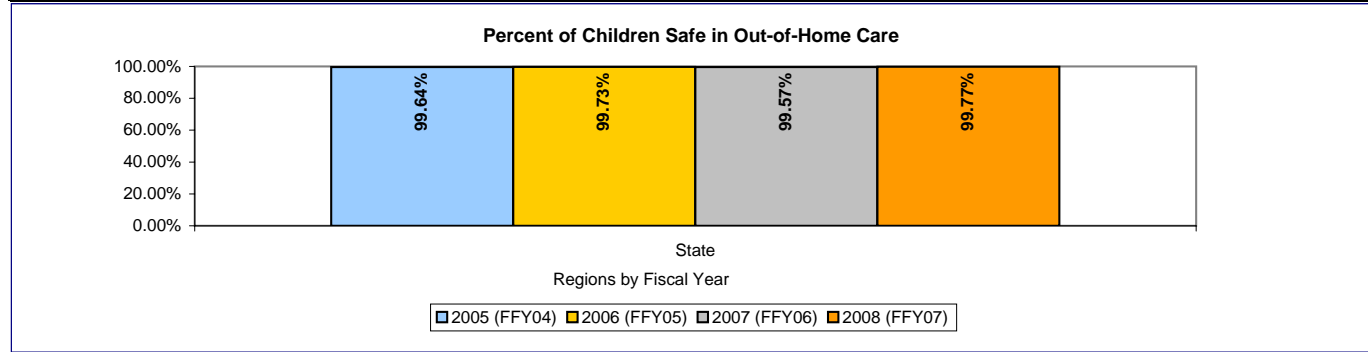


[data file](#)

3.D.2.1 Plan page 28

Report FY	Measure	Region 1	Region 2	Region 3	Region 4	Region 5	Region 6	State
2005 (FFY04)	Actual Performance Baseline Actual % Change from Prior Yr % Point Difference (actual - benchmark)							99.64%
2006 (FFY05)	Actual Performance Baseline Actual % Change from Prior Yr % Point Difference (actual - benchmark)							99.73%
2007 (FFY06)	Actual Performance Benchmark Actual % Change from Prior Yr % Point Difference (actual - benchmark)							99.57% 99.7% -0.11%
2008 (FFY07)	Actual Performance Benchmark Actual % Change from Prior Yr % Point Difference (actual - benchmark)							99.77% 99.68% n/a 0.09%

Measure Description:
ACF calculated measure based on administrative data submission. Regional statistics are not provided to States.

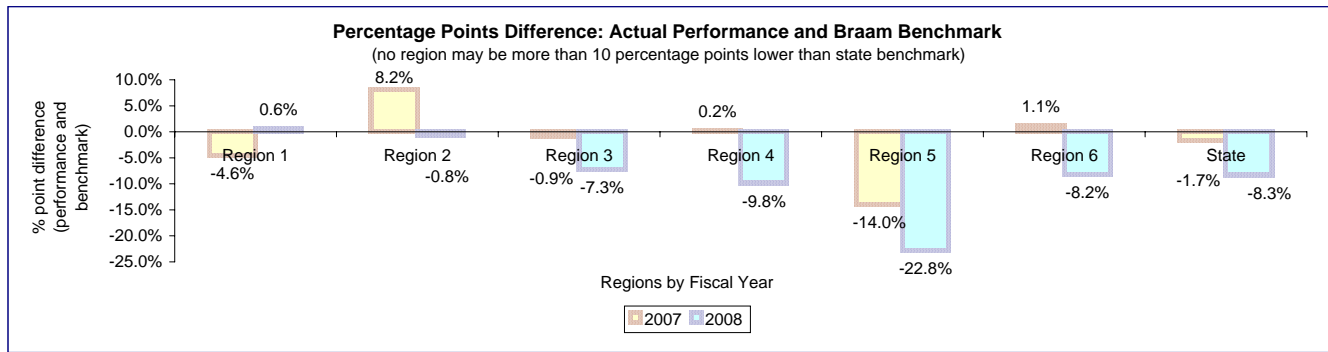
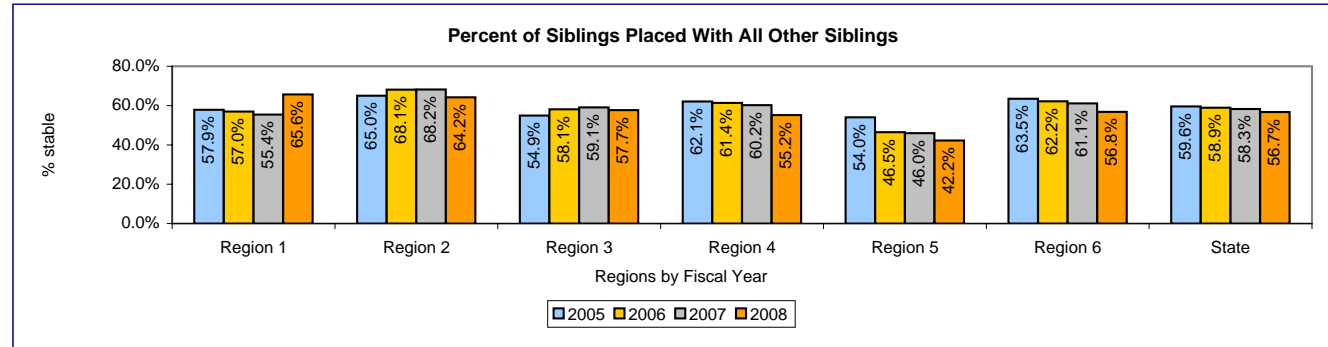


[data file](#)

Sibling Placement by Race

Report FY	Measure	Region 1	Region 2	Region 3	Region 4	Region 5	Region 6	State	
2005	Actual Performance	% all together	57.9%	65.0%	54.9%	62.1%	54.0%	63.5%	59.6%
	Baseline		0.0%	0.0%	0.0%	0.0%	0.0%	0.0%	0.0%
	Actual % Change from Prior Yr		0.0%	0.0%	0.0%	0.0%	0.0%	0.0%	0.0%
	% Point Difference (actual - benchmark)		na	na	na	na	na	na	na
2006	Actual Performance	% all together	57.0%	68.1%	58.1%	61.4%	46.5%	62.2%	58.9%
	Baseline		0.0%	0.0%	0.0%	0.0%	0.0%	0.0%	0.0%
	Actual % Change from Prior Yr		-1.6%	4.8%	5.8%	-1.1%	-13.9%	-2.0%	-1.2%
	% Point Difference (actual - benchmark)		0.0%	0.0%	0.0%	0.0%	0.0%	0.0%	0.0%
2007	Actual Performance	% all together	55.4%	68.2%	59.1%	60.2%	46.0%	61.1%	58.3%
	Benchmark		60.0%	60.0%	60.0%	60.0%	60.0%	60.0%	60.0%
	Actual % Change from Prior Yr		-2.8%	0.1%	1.7%	-2.0%	-1.1%	-1.8%	-1.0%
	% Point Difference (actual - benchmark)		-4.6%	8.2%	-0.9%	0.2%	-14.0%	1.1%	-1.7%
2008	Actual Performance	% all together	65.6%	64.2%	57.7%	55.2%	42.2%	56.8%	56.7%
	Benchmark		65.0%	65.0%	65.0%	65.0%	65.0%	65.0%	65.0%
	Actual % Change from Prior Yr		18.5%	-5.8%	-2.3%	-8.4%	-8.2%	-7.1%	-2.8%
	% Point Difference (actual - benchmark)		0.6%	-0.8%	-7.3%	-9.8%	-22.8%	-8.2%	-8.3%

Measure Description:
 Uses logic developed by David Marshall and modified by Matt Orme to identify sibling groups. Measure evaluates children removed together during the FY with at least one other sibling (identified by common core 6 digits in CaselD and placement office) who were initially placed into a family foster home setting. Siblings removed and initially placed into group care or other non family settings are excluded. Sibling groups with any child receiving basic foster care or any level 2-4 foster care payments are included, as are sibling groups where one or more members may be sexually or physically aggressive. Sibling groups with any child receiving BRS payments in a family foster home setting are also included.



[data file](#)

