

BRAAM SETTLEMENT MONITORING REPORT #6

MARCH 16, 2009

Covers the performance period ending December 31, 2008





Braam Oversight Panel

The Braam Oversight Panel was created in 2004 to oversee a Settlement regarding Washington State's foster care system. The Settlement was reached after a six-year period of litigation. The named Plaintiff, Jessica Braam, is an adult who lived in 34 foster homes by the time the suit was filed in 1998. The Settlement is intended to improve the conditions and treatment of children in the custody of the state's Division of Children and Family Services. *As of July 2008, there were approximately 11,700 children in DCFS custody, including children in out-of-home care and dependent children who were being served in their own homes.*

The Panel was created to monitor improvements in selected services and ensure quality standards are met during the seven year duration of the settlement. This independent Panel was mutually selected by the parties (the Plaintiffs who filed the lawsuit and the state of Washington). The Panel, working in collaboration with the Department of Social and Health Services (DSHS) and with substantial input from the Plaintiffs and other stakeholders, issued an Implementation Plan for the six areas specified in the Settlement in February 2006. In July 2008, a Revised Braam Implementation Plan was published to reflect clarifications and modifications based on developments in the Braam process and discussions with DSHS, the plaintiffs and stakeholders.

This document is the sixth monitoring report on the Settlement and provides outcome data for fiscal year 2008 (July 2007- June 2008), as well as a report on action steps through December 31, 2008. This monitoring report is based on the requirements of the Revised Braam Implementation Plan (July 3, 2008).

Members

John Landsverk, Chair

Jeanine Long

Jan McCarthy

Jess McDonald

Dorothy Roberts

Carrie Whitaker, Executive Coordinator

Box 354900
4101 15th Ave NE
Seattle, WA 98105-6299

Phone: (206) 616-0390
FAX: (206) 543-1228
E-mail: carwhit@u.washington.edu
Website: www.braampanel.org

TABLE OF CONTENTS

Overview	2
Approach to Monitoring Reports	5
Part I: Monitoring Report on Action Steps	8
Placement Stability	10
Mental Health	11
Foster Parent Training and Information	13
Unsafe/Inappropriate Placements	14
Sibling Separation	15
Services to Adolescents	16
Part II: Monitoring Report on Outcomes	19
Placement Stability	22
Mental Health	25
Foster Parent Training and Information	33
Unsafe/Inappropriate Placements	34
Sibling Separation	41
Services to Adolescents	44
Part III: Informational Reports	48
Status of Informational Reports	49
Summary of Informational Reports	53
Appendices (<i>separate attachments</i>)	
o Appendix I: Children’s Administration FY08 Performance Report	
o Appendix III: Children’s Administration 2008 Case Review Reports	
o Appendix III: Children’s Administration FY08 Informational Reports	

[Page left blank intentionally.]

OVERVIEW

The Braam Oversight Panel was created in December 2004 to oversee a settlement agreement (Settlement) regarding Washington State's foster care system. The Settlement was reached after a six-year period of litigation.¹ The parties to the Settlement include the Plaintiffs,² who filed the lawsuit, and the State of Washington, respondents to the lawsuit.

The final Settlement created an independent oversight panel (the "Panel") that was mutually selected by the parties. The members include:

- A former child welfare administrator;
- A child welfare researcher;
- An expert in children's mental health; and
- Two additional members.

The Settlement directed the Panel to establish professional standards, outcomes, benchmarks, and action steps to improve the treatment of, and conditions for, children in the custody of DCFS, and to monitor the Department's performance under this Settlement (Settlement, page 1). The intent of the Settlement, and the Panel's work, is summarized on the first page of the Settlement:

"The parties enter into this Agreement with the recognition that both parties and their counsel have committed to enter into specific, measurable, and enforceable agreements with the goal of improving the conditions and treatment of children in the custody of the Division of Children and Family Services."

Over 50 provisions from Kids Come First II, the comprehensive reform plan for children's services in place at the Department at the time the agreement was reached, were incorporated directly into the Settlement. The Settlement also addressed numerous issues included in state law.

Settlement Definitions

The Settlement defines the Plaintiff class as follows:

- **"Child" or "Children" in foster care** means children in the custody of DCFS. For the outcomes, benchmarks, and actions steps, this term refers to children in the Plaintiff Class, defined as all children in the custody of DCFS who are now or in the future will be placed by DCFS in three or more placements and those children in the custody of DCFS who are at risk of three or more placements. The Panel interprets this definition to include all children in the custody of DCFS.

As of July 2008, there were approximately 11,700 children in DCFS custody, including children in out-of-home care and dependent children who were being served in their own homes.

- **"Department"** means the Department of Social and Health Services. In terms of responsibilities related to the Settlement, the most relevant divisions are the Children's Administration and Health and Recovery Services (including the Division of Mental Health and the Division of Alcohol and Substance Abuse).

¹ The Final Settlement is available on the Braam Panel website: www.braampanel.org.

² The Plaintiffs' attorneys include Columbia Legal Services, the National Center for Youth Law, and Tim Farris, a Bellingham lawyer who initiated the case.

The Settlement established goals in six areas:

- **Placement Stability:** Every child will have a safe and stable placement with a caregiver capable of meeting the child's needs.
- **Mental Health:** Children shall have initial physical and mental health screenings within 30 days of entry into care. The child's case plan will include plans to meet their special needs. Children shall receive timely, accessible, individualized, and appropriate mental health assessments and treatment by qualified mental health providers. Continuity of treatment providers will be maintained.
- **Foster Parent Training and Information:** Caregivers shall be adequately trained, supported, and informed about children in their care. The Department shall provide accessible pre-service and in-service training to all caregivers sufficient to meet the caregiving needs of children in placement.
- **Unsafe/Inappropriate Placements:** All children shall be placed in safe placements. The state shall continue to meet or exceed the federal standard for out-of-home care.
- **Sibling Separation:** Placement of siblings together is presumed to be in the children's best interest unless there is a reasonable basis to conclude that the health, safety, or welfare of a child is put in jeopardy by the placement. Frequent and meaningful contact between siblings in foster care who are not placed together and those who remain at home should occur unless not in child's best interest.
- **Services to Adolescents:** Improve the quality and accessibility of services to adolescents. Improve the educational achievements of these adolescents and better prepare them to live independently. Reduce the number of adolescents on runaway status from foster care.

Collaboration and Consultation

The Settlement directs the Panel to conduct its work "in collaboration with the Department, and with substantial input from Plaintiffs, and other stakeholders as necessary" (Settlement, page 3). The Settlement also provides that "in carrying out all of its general and specific duties, the Panel shall make independent decisions based on professional judgment and guided by knowledge of effective practice and an understanding of the public child welfare system in the State of Washington" (Settlement, page 3). In the Panel's view, the statements regarding "in collaboration with...and with substantial input from" and "independent decisions" establish a creative tension to its work. The Panel submits its reports for review and comment by the parties and other stakeholders, while reserving its independent and final decision-making for the structure, content, and wording of its reports.

The original Settlement specifies that the Panel "will comply with the Open Public Meetings Act, the Public Disclosure Act and all applicable confidentiality statutes and regulations" (Settlement, page 5). In February 2008, attorneys representing the Department and the plaintiffs formally amended the Settlement Agreement to facilitate the Panel's efforts to carry out its duties between public meetings. Based on this amendment, the Panel may hold non-public work sessions or phone meetings with advance notification of the parties and maintenance of meeting minutes. The Panel continues to meet publicly at least four times per year.³

In carrying out its duties, the Panel welcomes comments from stakeholders and tribal representatives. While the Department is ultimately responsible for achieving the Settlement requirements, community providers play a significant role in service delivery for children and families and have an important voice

³ Minutes of non-public Panel meetings and work sessions are available by request to the parties and the public. Information on public Panel meetings, including meeting schedules, agendas and minutes, are available on the Braam Panel website: www.braampanel.org.

and perspective to offer both the Department and the Panel. Collaboration with parents, relatives, and tribal representatives will help ensure quality decision-making for children; numerous provisions in both KCF II and the Settlement outcomes and action steps reinforce this value.

Panel Work Products

Under the Settlement, the Panel issues the following types of documents:⁴

- **Implementation Plan**, defining the specific and enforceable performances required by the Settlement. In February 2006, the Panel published the Braam Settlement Implementation Plan. This document was developed through extensive public meetings and collaboration with DSHS and input from plaintiffs' counsel, and incorporated many recommendations and responses to previous draft documents from both parties and stakeholders.

The Revised Implementation Plan (July 3, 2008) includes clarifications and modifications based on developments in the Braam process and discussions with DSHS, the plaintiffs and stakeholders during 2006 and 2007.

- **Monitoring Reports**, measuring progress toward the Settlement goals, outcomes, benchmarks, and action steps for each six-month period. Under the agreement, the Panel is expected to "monitor the Department's progress with the specific Outcomes, Benchmarks, and Action Steps identified in this Agreement or as part of its implementation." (Settlement, page 4).

The Panel began publishing progress reports in March 2006. Subsequent reports were released in September 2006, April 2007, October 2007, and October 2008. Pursuant to the Settlement Agreement, the Panel will continue to publish monitoring reports every six months through the duration of the agreement.

- **Decisions on Compliance Plans**, in which the Panel issues decisions on plans proposed by the Department to achieve compliance in areas in which the Panel has determined that adequate progress has not been made.
- **Professional Standards**, which "the parties agree will be the Professional Standards used in any enforcement proceeding" (Settlement, page 4). After significant input from the Department and the plaintiffs, the Panel published professional standards in March 2007.

⁴ All Panel work products are available on the Braam Panel website at www.braampanel.org. Individuals and organizations can sign up to receive email alerts when new material is posted.

APPROACH TO MONITORING REPORTS

The Settlement requires the Panel to “monitor compliance and make findings with respect to the outcomes, benchmarks and action steps;” and to “issue semi-annual public reports on the Department’s compliance with the provisions of this Agreement.”

This Monitoring Report is based on the requirements set forth in the **Revised Braam Implementation Plan**, which was published on July 3, 2008. The Revised Implementation Plan replaces the February 2006 Implementation Plan and provides a revised framework for monitoring efforts. The Revised Implementation Plan was developed during the first half of 2008 by the Panel in collaboration with DSHS and with substantial input from the plaintiffs to reflect changes and clarifications since the publication of the original plan. The Revised Braam Implementation Plan included changes in the definition of many Braam outcomes, the annual benchmarks to be used to assess compliance with these outcomes, and the action steps that will be subject to ongoing monitoring by the Panel. These changes are reflected in this Monitoring Report.

This document is the Panel’s sixth monitoring report and provides outcome data for fiscal year 2008 (July 2007- June 2008) and assesses performance on action steps for the period ending December 31, 2008.

This Monitoring Report includes three major sections:

- **Monitoring report on action steps**- This report summarizes progress with respect to action steps that were expected to have been fully or partially implemented as of December 31, 2008. Only action steps that are subject to continued monitoring under the Revised Braam Implementation Plan are included in this report.⁵

Part I of this document, beginning on page 8, is the Panel’s assessment of progress on these action steps. The primary sources for this portion of the report are documents from the Department, including an update report summarizing progress and other written material (policies, plans, etc.). The Panel used the “comments” section of the matrix to provide further information on progress to date.

- **Monitoring report on outcomes**- The Panel’s Revised Implementation Plan specified outcomes to “identify specific, required results that will advance the child welfare system toward a stated goal” (Settlement, page 4) and established annual benchmarks through which the Panel will monitor compliance with these outcomes.

This Monitoring Report assesses progress with respect to the outcomes and benchmarks set forth in the Revised Braam Implementation Plan.⁶ In this Monitoring Report, progress toward the benchmarks was determined by using fiscal year 2008 (July 2007- June 2008) data.

Part II of this document, beginning on page 19, presents information on outcomes and benchmarks. For each goal area of the agreement, information for each outcome identified in the Revised Braam Implementation Plan is provided in two sections:

⁵ The Revised Braam Implementation Plan includes a section detailing the status of all action steps included in the Braam Settlement Agreement and the original February 2006 Braam Implementation Plan (see p.40 of Revised Braam Implementation Plan at <http://www.braampanel.org/ImpPlanREVJuly08.pdf>). Many of these action steps have been found to be complete by the Panel or will not be subject to ongoing monitoring because they are addressed through related outcomes or informational reports. Only the action steps classified as “retained” in the Revised Braam Implementation Plan will be included in this and future Braam Monitoring Reports.

⁶ The Revised Braam Implementation Plan included a number of changes from the February 2006 Implementation Plan with respect to how outcomes are defined and in the annual benchmarks to be achieved. This and future Braam Monitoring Reports will be based on the Revised Braam Implementation Plan.

- Findings on Outcomes and Benchmarks: For 20 outcomes, findings with respect to whether or not FY08 annual benchmarks were reached are presented.
 - Compliance not reviewed in this report: For 13 outcomes, outcome data will be provided in spring/ summer 2009 for the Panel's next Monitoring Report. For most of these outcomes, data will be provided through the foster parent survey, which will be conducted over the next several months and data will be available for the Panel's October 2009 Monitoring Report. For several other outcomes, the timeframes in the Panel's Implementation Plan do not require submission of compliance data at this time. Details for each outcome are explained in Part II of this document.
- **Informational reports**- Part III of this document, beginning on page 47, is devoted to informational reports required under the Revised Implementation Plan.

As stated in the Revised Implementation Plan, "in areas identified for informational reports, the Panel will require annual submission of data by the Department (including performance by region and by racial/ ethnic subcategories), but will not set forth or assess compliance with annual benchmarks. Informational reports will provide the Panel, parties, and stakeholders with extensive data to better understand progress toward Braam goals and outcomes. Upon review of informational reports, the Panel reserves the right to reinstate or develop new outcomes and benchmarks."

This section of the report lists the informational reports required under the Revised Implementation Plan, the status of these reports, and a summary of informational reports provided to date.

Next Steps

The Revised Implementation Plan requires submission of data by race and ethnicity for all Braam outcomes. The Panel has received these reports for several outcomes, and is in the process of reviewing these data. The Panel will release an addendum to this report, including these data and any additional Panel comments.

The Panel's next Monitoring Report will be issued in October 2009. This report will cover progress on action steps through June 30, 2009 and will provide data and assess progress for calendar year 2008 on Braam outcomes that are measured by the foster parent survey, as well as a handful of other outcomes. Administrative data for fiscal year 2009 will not yet be available by the time of this report, and thus will be addressed in the Panel's March 2010 report.

[Page left blank intentionally.]

PART I: MONITORING REPORT ON ACTION STEPS

This Monitoring Report is based on the expectations set forth in the **Revised** Braam Implementation Plan, which was published on July 3, 2008. With respect to action steps, the Revised Braam Implementation Plan includes a section detailing the status of all action steps included in the Braam Settlement Agreement and the original February 2006 Braam Implementation Plan (see p.40 of Revised Braam Implementation Plan at <http://www.braampanel.org/ImpPlanREVJuly08.pdf>). Many of these action steps have been found to be complete by the Panel or will not be subject to ongoing monitoring because they are addressed through related outcomes or informational reports. *Only the action steps classified as “retained” in the Revised Braam Implementation Plan will be included in this and future Braam Monitoring Reports.*

The following matrix reports on the progress through December 31, 2008 of the 15 action steps subject to continued monitoring under the Revised Braam Implementation Plan, including action steps that are operating under compliance plans previously approved by the Panel.

Detailed Status of Action Steps

The Panel has categorized the status of the 15 action steps as follows (the numbers in parentheses indicate the number of action steps that fit each category—e.g. 6 action steps are complete):

- ✓ Complete (6)
- ✓ Complete through performance period⁷ (5)
- ✓ Incomplete: Compliance Plan for this step will be due in 30 days⁸ (1)
- ✓ Under Approved Compliance Plan (2)
 - Actions under compliance plan not complete through performance period (1)
 - Approved compliance plan complete through performance period (1)
- ✓ Pending (1)

⁷ Action steps with some items due before and others after December 31, 2008 were assessed as “complete through performance period.”

⁸ This category includes action steps found to be incomplete in this Monitoring Report. Pursuant to the Settlement, the Department has 30 days to submit proposed plans to achieve compliance with these steps. Action steps are categorized as incomplete whenever any substeps that were due have been determined not to have been implemented, even if some portions of the action step have been completed. The comments section in the matrix detailing the Panel’s decisions on action steps indicates which portions of the step have been completed.

Summary of the Panel's findings on the Action Steps by area of the settlement agreement

	Placement Stability	Mental Health	Foster Parent Training	Unsafe/ Inappropriate Placements	Sibling Separation	Adolescents	<i>total</i>
Complete				2	1	3	6
Complete through performance period		2	1			2	5
Incomplete: Compliance Plan for this step will be due in 30 days		1					1
Under Approved Compliance Plan							2
• Approved compliance plan complete through performance period						1	
• Approved compliance plan not complete through performance period	1						
Pending						1	1
<i>Total</i>	1	3	1	2	1	7	15

Format of the Report on Action Steps

Numbering System

Kids Come First II, the Braam Settlement Agreement, and the February 2006 Braam Implementation Plan used slightly different numbering systems to refer to Braam action steps. In the Revised Braam Implementation Plan, retained action steps were renumbered in sequential order. This and future Panel reports will identify action steps based on the numbering in the Revised Braam Implementation Plan.

Matrix

The Panel's assessment of progress on action steps is presented in a 3-column matrix format beginning on page 10. The first column (Area/ Action Step) lists the action step. In the center column (Implementation Status), the status of the action step is noted, along with a parenthetical reference to the report in which the Panel made this finding. The last column of the matrix (Comments) provides clarifying comments from the Panel and expectations for future updates.

For the 6 action steps that are complete, all three columns are shaded.

Area/Action Step	Implementation Status	Comments
Placement Stability		
<p>Develop a plan by June 30, 2005 for review and approval by the Braam Panel to reduce caseloads to COA standards <i>[Revised Implementation Plan Placement Stability Action Step 1]</i> <i>[KCF II 14.1.8 (incorporated from Braam into KCF II) , Action Step 1(c)(9) in Settlement]</i></p> <ul style="list-style-type: none"> a. Establish workgroup to develop plan and estimate costs/resources required (1/05) b. CA Management reviews and approves plan (5/05) c. Plan submitted to Braam Panel for review (6/05) 	<p>Approved compliance plan not complete through performance period (Monitoring Report #6, March 16, 2009)</p>	<p>Compliance plan approved on October 1, 2008 called for the submission of a comprehensive, fully-detailed caseload reduction plan by December 31, 2008.</p> <p>A plan was submitted by the Department but was found to be unacceptable by the Panel. The Panel detailed its concerns with the plan in a February 10, 2009 letter to CA; in summary, the Panel stated that the plan submitted did not include a clear path to achieving COA caseloads and did not include contingency plans if certain best-case scenario assumptions are not met. The Panel requested that the plan be revised and resubmitted.</p>

Area/Action Step	Implementation Status	Comments
Mental Health		
<p>Initial (72 hour) health screening <i>[Revised Implementation Plan Mental Health Action Step 1]</i> <i>[Goal 1, Outcome 1, Action step 2-4 of February 2006 Braam Implementation Plan]</i></p> <ul style="list-style-type: none"> • The plan for achieving Goal 1, Outcome 1 will be submitted to the Panel for review and approval-- 3/30/07 • The Department will begin to implement initial health screens-- 10/30/07 • The Department will track implementation to ensure that each child who enters out-of-home care receives an initial health screen-- Begin 10/07—continuous tracking 	<p>Incomplete (Monitoring Report #6, March 16, 2009)</p> <p>Compliance plan required</p>	<p>Action step was found incomplete in Monitoring Report #5 (October 2008). Compliance plan was required but not submitted.</p> <p>Department has indicated that it does not believe that this action step is within the scope of the Braam agreement. Plaintiffs' attorneys disagree with the Department's position. The Panel has concluded that this action step is within the scope of the agreement.</p>
<p>Develop a plan to ensure the quality of the CHET process <i>[Revised Implementation Plan Mental Health Action Step 2]</i> <i>[Goal 1, Outcome 2, Action Step 1 of February 2006 Braam Implementation Plan]</i></p> <p>The Department will develop, and submit to the Panel for approval, a plan to review and ensure the quality of the CHET process that will address issues such as:</p> <ul style="list-style-type: none"> • timeliness of completing CHET screens • timely receipt of educational records • well-child EPSDT exams completed within 30 days • quality of information collected in each of the 5 domains • effectiveness of the screening and assessment instruments used in CHET • use of data/information on a child that is received after the Shared Planning Meeting occurs • inclusion of parents, caregivers, youth (age 12 and over), tribal representatives (when applicable), and children's representatives in the CHET Shared Planning Meetings, and in developing Action Plans • determining whether CHET recommendations are followed and services are received • for children whose CHET recommendations are largely unrelated to services received, analyze reasons and suggest system improvements <p>The plan will be completed and submitted to the Panel for review by 12/30/06</p> <p>The Department will begin implementation of the plan by 9/30/07</p> <p>The Department will provide the Panel with annual reports on the results of the Quality Review beginning 9/30/08</p>	<p>Complete through performance period (Monitoring Report #6, March 16, 2009)</p>	<p>Panel notes that CA has implemented a plan to ensure the quality of the CHET process. Panel's review of the materials submitted for this action step, including the questions in the CHET Screen Report Review, raised questions related to the CHET process. Panel will request clarification of these issues prior to the next annual update for this action step.</p>

Area/Action Step	Implementation Status	Comments
Mental Health		
<p>Annual review of mental health and substance abuse services <i>[Revised Implementation Plan Mental Health Action Step 3]</i> <i>[Goal 3, Additional Action Step 7 of February 2006 Braam Implementation Plan]</i></p> <p>The Department will complete an annual review of the status of mental health and substance abuse services for children in foster care and use the findings from the review to address service gaps and system problems to develop services and to expand the use of evidence-based models of service, where applicable.</p> <p>The Department will publish the review and plan annually, beginning in November 2007. The annual review will identify by region both achievements in foster children receiving services and any deficiencies. The Department will establish plans to increase the achievements and reduce the deficiencies. The review and plans will be based in part on service data; direct feedback from children, parents, and caretakers; and reports generated through the action steps in the Settlement and the Braam Implementation Plan.</p>	<p>Complete through performance period (Monitoring Report #6, March 16, 2009)</p>	<p>Panel requests that next annual review (November 2009) address the following issues:</p> <ul style="list-style-type: none"> • Describe what has been learned since the launch of FamLink about children’s mental health and substance abuse needs and services. • Provide an update on evidence-based practices available through Children’s Administration, Mental Health Division, and Juvenile Rehabilitation Administration, including the number of children needing and having access to these services. • Provide an update on the implementation of SHB 1088 and its implications for children in foster care. Provide additional detail on the survey of 2,000 stakeholders conducted as part of this process in June 2008 (Did this survey address the mental health needs of children in foster care? What were the results of this survey?) • Document the outcomes of the meetings between CA regional staff and RSN children’s care coordinators in terms of solving problems and coordinating services for children in foster care. • Clarify how service planning is coordinated for children who receive services across multiple divisions.

Area/Action Step	Implementation Status	Comments
Foster Parent Training and Information		
<p>Foster parent survey <i>[Revised Implementation Plan Foster Parent Training Action Step 1]</i> <i>[Action Step 1 of February 2006 Braam Implementation Plan]</i></p> <p>The Children’s Administration will contract with the Social and Economic Sciences Research Center (SESRC) at Washington State University to develop and conduct an independent, statistically valid, anonymous survey of foster parents (current and former) and relative caregivers (licensed and unlicensed) that is conducted annually concerning all areas of the Settlement related to caregiver’s work with foster children and associated outcomes and action steps.</p> <p>In developing the survey design, tool, and procedures, the SESRC shall consult with the Panel, the Washington State Foster Parent’s Association, Braam plaintiffs’ attorneys, the CA Youth Advisory Group, the foster parent liaison staff in CA, and a group of five DCFS staff selected by CA.</p> <p>Survey planning completed by 10/1/06</p> <p>Survey reviewed and approved by Panel by 12/1/06</p> <p>First survey results to Panel by 9/01/07</p> <p>Second survey results to Panel by 8/01/08</p> <p>Third survey results to Panel by 8/01/09</p> <p>Fourth survey results to Panel by 8/01/10</p> <p>Fifth survey results to Panel by 6/01/11</p>	<p>Complete through performance period</p> <p>(Monitoring Report #6, March 16, 2009)</p>	<p>Second annual survey results were provided in September 2008. Planning has begun for spring 2009 administration of survey.</p>

Area/Action Step	Implementation Status	Comments
Unsafe/Inappropriate Placements		
<p>Increase contact between social worker and family, child and caregivers to at least every calendar month, with no visit being more than 40 days after the previous visit⁹ <i>[Revised Implementation Plan Unsafe Placements Action Step 1]</i> <i>[KCF II 14.1.2 (originally 11.1.2), Action Step 4(c)(1) in Settlement]</i></p> <p>For children placed in out-of-home care, develop and implement a policy to require visits every calendar month, with no visit being more than 40 days after the previous visit) between social worker and parents, and social worker and child IN ALL CASES This action step and following benchmarks are subject to 2005 budget request</p> <ol style="list-style-type: none"> Utilizing policy workgroup from 14.1.1, develop policy recommendations (3/05-5/05) Workgroup reports out recommendations (5/05) CA Management reviews and approves policy recommendations (6/05) Budget decisions (7/05) Provide orientation to staff, caregivers and community partners on new policy requirement (7/05-9/05) Revise new social worker academy training to support new policy and practice guidelines (9/05) Based on available funding, implement policy changes (10/05) Establish baseline for compliance with policy changes and set performance measure (3/06) Initiate quarterly reporting to the field (6/06) 	<p>Complete (Monitoring Report #6, March 16, 2009)</p>	<p>Implementation of policy requiring monthly visits and visits in the first week of placement occurred on September 1, 2008.</p> <p>Action step requirement for quarterly reporting is replaced by monthly provision of data under compliance plan for Unsafe & Inappropriate Placements Goal 1, Outcome 6.</p>
<p>Increase compliance with policy requiring workers to visit children in placement within the first week of out-of-home care <i>[Revised Implementation Plan Unsafe Placements Action Step 2]</i> <i>[KCF II 14.1.6, Action Step 4(c)(2) in Settlement]</i></p> <p>Review and revise policy requiring social workers to visit all children in their placement within the first week in out-of-home care</p> <ol style="list-style-type: none"> Establish workgroup to review and revise policy (6/05) Orient staff to new policy requirement (8/05) Begin implementation of new policy (10/05) Establish regional baselines and set performance measure (6/06) Initiate quarterly reporting to the field (6/06) 	<p>Complete (Monitoring Report #6, March 16, 2009)</p>	<p>Implementation of policy requiring monthly visits and visits in the first week of placement occurred on September 1, 2008.</p> <p>In lieu of quarterly reporting required under action step, Panel requests informational reports on visits in the first week of out-of-home placement, to be submitted along with monthly data being provided under compliance plan for Unsafe & Inappropriate Placements Goal 1, Outcome 6.</p>

⁹ Language of original action step has been modified from visits “once every 30 days” to “every calendar month, with no visit being more than 40 days after the previous visit” to reflect policy changes approved by the Panel. In addition, after discussion with the parties, the Panel interprets references to “parents,” “family” and “caregivers” in the original action step language to apply to the individual(s) with whom a child in the Braam class is living: a foster parent, a relative caregiver, or a birth parent for a child placed in an in-home dependency.

Area/Action Step	Implementation Status	Comments
Sibling Separation		
<p>Develop and implement policies and protocols to increase the quality and frequency of visits or contacts between children, parents, and siblings <i>[Revised Implementation Plan Sibling Separation Action Step 1]</i> <i>[KCF II 18.1.1, Action Step 5(c)(1) and Action Step 5(c)(5) in Settlement]</i></p> <p>Develop policies and protocols regarding visitations for children in foster care to include frequency of visitation</p> <ol style="list-style-type: none"> a. Establish a policy workgroup, including stakeholders and researchers, to develop a framework for visitations between parents and children and siblings that is utilized uniformly across regions. Framework to include guidelines for visitations which encompass: (9/04-12/04) <ul style="list-style-type: none"> • When visitations can be unsupervised, • When visitations can be outside of the DCFS office, • When visitations can be outside DCFS office hours, and • Who is able to supervise visits • How the visitation issues will be addressed during the Family Team Decision Making meeting which occurs within 72 hours of a child’s placement in out-of-home care. • How the visitation issues will be addressed in other staffings and supervisory conferences • Guidelines for documentation of visits for social workers and contracted service providers b. Workgroup reports out recommendations (12/04) c. CA Management reviews and approves framework and policy recommendations (1/05) d. Provide training for staff and providers to support policy changes for visitations, quality of visitations and maintaining child’s cultural connections (2/05-4/05) e. Implement policy changes upon training (2/05-4/05) f. Report out quarterly on progress (6/05-6/07) 	<p>Complete (Monitoring Report #5, October 1, 2008)</p>	<p>Requirement for quarterly reporting is replaced by monitoring of related outcome (Sibling Separation, Goal 2, Outcome 1).</p>

Area/Action Step	Implementation Status	Comments
Services to Adolescents		
<p>Educational attainment study <i>[Revised Implementation Plan Adolescent Services Action Step 1]</i> <i>[Goal 2, Outcome 3, Action step 1 of February 2006 Braam Implementation Plan]</i></p> <p>The CA will replicate the 2001 WSIPP study Educational Attainment of Foster Youth: Achievement of Graduation Outcomes for Children in State Care for school-age children in foster care three months or longer in FY2005, with inclusion of WASL performance for 4th, 7th and 10th grades and all other variables in the study. The study may be done by CA following the methods used in the 2001 study, or contracted to WSIPP or another research organization.¹⁰</p> <ul style="list-style-type: none"> • Plan to Panel regarding intent to perform work within DSHS or contract (6/1/06) • First study completed (11/1/08) • Follow-up studies (11/1/08, 12/1/10) 	<p>Approved compliance plan complete through performance period (Monitoring Report #6, March 16, 2009)</p>	<p>Panel looks forward to receiving a report addressing graduation outcomes prior to the Panel's next monitoring report (October 2009).</p>
<p>Establish educational outreach positions to assist children in out-of-home care in meeting K–12 educational objectives and preparing for higher education goals. <i>[Revised Implementation Plan Adolescent Services Action Step 2]</i> <i>[KCF II 15.3.4 (originally 15.1.3), Action Step 6(c)(7) in Settlement]</i></p> <p>Work with Washington Education Foundation to obtain funding and implement the Foster Care to College Partnership plan, which includes establishing six regional educational outreach positions, who will serve as liaisons to assist children (16-18 year olds) in out-of-home care in meeting higher education goals.</p> <ol style="list-style-type: none"> a. In collaboration with Washington Education Foundation, complete Foster Care to College Partnership proposal (10/04) b. Seek 3-year grant funding (10/04-2/05) c. Based on funding, begin implementation of the Foster Care to College Partnership plan (4/05) d. Report on implementation (9/05) e. Annual evaluation report (completed each year of the 3-year grant funding) (6/06, 6/07, 6/08) 	<p>Complete (Monitoring Report #5, October 1, 2008)</p>	

¹⁰ A requirement to replicate the study every two years has been deleted from the original action step. Through related requirements for informational reports, the Panel will expect ongoing submission of these data. Data can be obtained through replicated WSIPP study, FamLink, Office of the Superintendent of Public Instruction, or other sources.

Area/Action Step	Implementation Status	Comments
Services to Adolescents		
<p>Develop and implement tutoring and mentoring services, in conjunction with existing community resources, to improve educational outcomes for adolescents in out-of-home care. <i>[Revised Implementation Plan Adolescent Services Action Step 3]</i> <i>[KCF II 15.2.3 (originally 15.1.2), Action Step 6(c)(10) in Settlement]</i></p> <ul style="list-style-type: none"> a) Develop roles and responsibilities for educational coordinators (10/05) b) Hire regional educational coordinators to provide educational advocacy (12/05) c) Train regional educational coordinators (12/05) d) Regional coordinators work with community partners to develop regional plans, including existing community resources and tutoring/mentoring programs (9/05) e) Communicate program to staff, youth, caregivers and community partners (2/06) f) Implement regional plans (2/06) g) Initiate quarterly reporting to the field (5/06) 	<p>Complete (Monitoring Report #5, October 1, 2008)</p>	
<p>Attendance, truancies, suspensions and expulsions <i>[Revised Implementation Plan Adolescent Services Action Step 4]</i> <i>[Goal 2, Outcome 3, Action step 5 of February 2006 Braam Implementation Plan]</i></p> <p>The Department will collect information on school attendance, truancies, suspensions, and expulsions about youth in foster care in Washington, and will use this information to design and implement practice and system improvements in DCFS and to advocate for system improvements related to this goal.</p> <p>June 1, 2008</p>	<p>Pending (Monitoring Report #6, March 16, 2009)</p>	<p>Workgroup has convened to discuss data issues, but it is not clear when data will be available. Panel requests update on efforts of data workgroup by August 2009, in advance of next monitoring report (October 2009).</p>
<p>Documentation of credit accumulation and GPA <i>[Revised Implementation Plan Adolescent Services Action Step 5]</i> <i>[Goal 2, Outcome 3, Action step 6 of February 2006 Braam Implementation Plan]</i></p> <p>DCFS will document each child's credit accumulation and Grade Point Average at each placement change and at the end of each school year in conjunction with the annual educational review in the ISSP. When placement changes disrupt credit acquisition, DCFS will work with the releasing and enrolling school districts to develop a plan for the child to complete credits.</p> <p>June 1, 2007</p>	<p>Complete (Monitoring Report #5, October 1, 2008)</p>	

Area/Action Step	Implementation Status	Comments
Services to Adolescents		
<p>ILP Contracts <i>[Revised Implementation Plan Adolescent Services Action Step 6]</i> <i>[Goal 2, Outcome 6, Action step 5 of February 2006 Braam Implementation Plan]</i></p> <p>The Department will propose strategies to the Panel to result in sufficient capacity of ILP contractors serving youth aged 15 and older so 100% of this population is served.</p> <p>CA proposes strategies: January 1, 2008</p> <p>Strategies implemented: July 1, 2009</p>	<p>Complete through performance period</p> <p>(Monitoring Report #6, March 16, 2009)</p>	<p>Panel notes continued growth in participation in IL programs in recent years.</p> <p>Panel requests update by August 2009 in advance of next monitoring report (October 2009) with information on participation in IL services (through contractors or other mechanisms).</p>
<p>Information on children in juvenile detention facilities <i>[Revised Implementation Plan Adolescent Services Action Step 7]</i> <i>[Goal 3, Outcome 3, Action step 3 of February 2006 Braam Implementation Plan]</i></p> <p>The Department will maintain information on children in foster care who spend time in juvenile detention facilities and will annually compile information on the number of these children, their lengths of stay in detention facilities, and the reason for the hold. The CA will use this information to design and implement practice and system improvements in DCFS and to advocate for system improvements.</p> <p>Report to Panel (June 1, 2008)</p> <p>Implement improvements (July 1, 2009)</p>	<p>Complete through performance period</p> <p>(Monitoring Report #6, March 16, 2009)</p>	<p>Panel requests update by August 2009, in advance of next monitoring report (October 2009).</p>

PART II: MONITORING REPORT ON OUTCOMES

In the Revised Implementation Plan (July 3, 2008), many of the original outcomes included in the February 2006 Implementation Plan were modified, consolidated, or converted to informational reports.¹¹ This and future Braam Monitoring Reports assess progress toward the benchmarks for the outcomes set forth in the Revised Braam Implementation Plan.

This Monitoring Report examines progress toward fiscal year 2008 (July 2007- June 2008) benchmarks. This report addresses Braam outcomes for which data are obtained from the state's administrative databases or through case review processes. Outcomes for which the data source is the foster parent survey are examined on a calendar year basis, as a result of the timing of administering the survey. These outcomes will be addressed in the Panel's next monitoring report, to be issued by October 2009.

Format of the Report on Outcomes

Beginning on page 22, information for each outcome identified in the Revised Braam Implementation Plan is provided. Each goal area includes two separate sections:

- Findings on Outcomes and Benchmarks: For 20 outcomes, findings with respect to the benchmarks based on FY2008 administrative data or case reviews are presented.
 - A separate page is included for each outcome for which new findings are presented. In the first row of the table, the outcome as stated in the Revised Implementation Plan is shown. In the next row of the table, the first column (Benchmarks) shows the benchmark for FY08 from the Revised Implementation Plan. In the second column (Performance), statewide performance for 2008 is shown. The last column (Current Status and Comments) indicates the Panel's findings with respect to whether or not the annual benchmark was reached, and any additional comments. The bottom section of the table provides more detailed charts and data taken from the Department's performance report; whenever available, these charts include information on performance by region and over the past several years.
- Compliance not reviewed in this report: For 13 outcomes, findings with respect to the benchmarks are not included in this report. These outcomes will be addressed in future Monitoring Reports. More detailed information on these outcomes is included in tables at the end of each section.
 - In the first column of the table (Outcome), the outcome as stated in the Revised Implementation Plan is shown. The second column (Benchmarks) shows the next benchmark that will be monitored by the Panel. The third column (Current Status and Comments) explains when data will be provided and when the Panel will make findings related to the benchmark.

Detailed data reports can be found in the appendices.

Monitoring Approach and Findings

The Settlement Agreement calls on the Panel to "monitor the Department's compliance with the specific Outcomes, Benchmarks, and Action Steps identified" in the Agreement or as part of its implementation and "to publish a report to the public and to the parties every six months of the Department's progress and including specific findings on the Department's compliance with the provisions" of the Agreement (Settlement, page 4-5). In carrying out its monitoring responsibility in the area of outcomes and benchmarks, the Panel has sought to use language consistent with the compliance terminology used in settlement agreement. As such, consistent with the agreement's terminology in section V, part 1, the Panel has reviewed outcomes and benchmarks and made determinations regarding whether the Department has *reached* or *failed to reach the annual benchmarks*.

¹¹ Informational Reports are addressed in Part III of this report, beginning on page 48.

The Revised Implementation Plan establishes numeric benchmarks for each outcome, identifying specific levels of performance to be achieved in each fiscal year. In addition, the Revised Implementation Plan identifies requirements for compliance based on regional data. In order to achieve compliance with outcomes identified in the Revised Implementation Plan, the Department must meet the statewide benchmark for the outcome. In addition, no individual region's performance may be significantly less than that statewide benchmark.¹² Specific regional requirements are detailed for each individual outcome in the Revised Implementation Plan. Thus, in this Monitoring Report, the Panel has reviewed both statewide and regional data in order to make a determination regarding whether an annual benchmark has been reached.

Based on this approach, on the following pages, each Braam outcome is classified into one of the following status categories:

- *Reached annual benchmark*- For 8 outcomes, data have been provided that show that the FY08 benchmarks (including statewide and regional rules) set forth in the Implementation Plan were reached.
- *Failed to reach annual benchmark: compliance plan required*- For 12 outcomes, the Panel has concluded that performance failed to reach the FY08 benchmarks set forth in the Implementation Plan. For 10 of these outcomes, data were provided showing performance that fell short of the benchmark. For 2 of these outcomes, the Panel concluded that the benchmark was not reached because acceptable data were not provided. Pursuant to the settlement agreement, a compliance plan is required.¹³
- *Compliance not reviewed in this report*: For 13 outcomes, no finding with respect to the achievement of benchmarks is shown in this report. Compliance will be reviewed in a future monitoring report:
 - For 8 of these outcomes, compliance data come from the foster parent survey. These data will be available for the Panel's October 2009 monitoring report.
 - For 2 of these outcomes, a data match with another agency is required and data will be available for the Panel's October 2009 monitoring report.
 - For 1 of these outcomes, the Panel is expecting data from FamLink (or, if not available, from a survey of youth) for the October 2009 Monitoring Report.
 - For 1 outcome, a compliance plan for the provision of data at a future date was previously approved by the Panel. Monitoring of this outcome will begin with FY09, and will be included in the Panel's March 2010 monitoring report.
 - For 1 outcome, according to the Revised Braam Implementation Plan, there is no benchmark requirement during the monitoring period. Monitoring of this outcome will begin with FY09, and will be included in the Panel's March 2010 monitoring report.

¹² For a small number of outcomes, the regional requirement for compliance will be that no individual region's performance is significantly *more* than the statewide benchmark. This applies to outcomes for which annual benchmarks *decrease* over the course of the settlement, such as the percentage of youth who run away from their placements.

¹³ In many of these areas, a compliance plan was previously approved by the Panel. For these outcomes, the Panel requires an updated compliance plan, providing an update on progress with respect to the strategies included in the original compliance plan and adding or modifying strategies where applicable.

Summary- Status of outcomes by area of the settlement agreement

	Placement Stability	Mental Health	Foster Parent Training	Unsafe/ Inappropriate Placements	Sibling Separation	Adolescents	<i>total</i>
Reached annual benchmark	1	3		3		1	8
Failed to reach annual benchmark: compliance plan required	2	4		2	2	2	12
Compliance not reviewed in this report		4	3	3	1	2	13
<i>Total</i>	3	11	3	8	3	5	33

PLACEMENT STABILITY- OUTCOMES AND BENCHMARKS

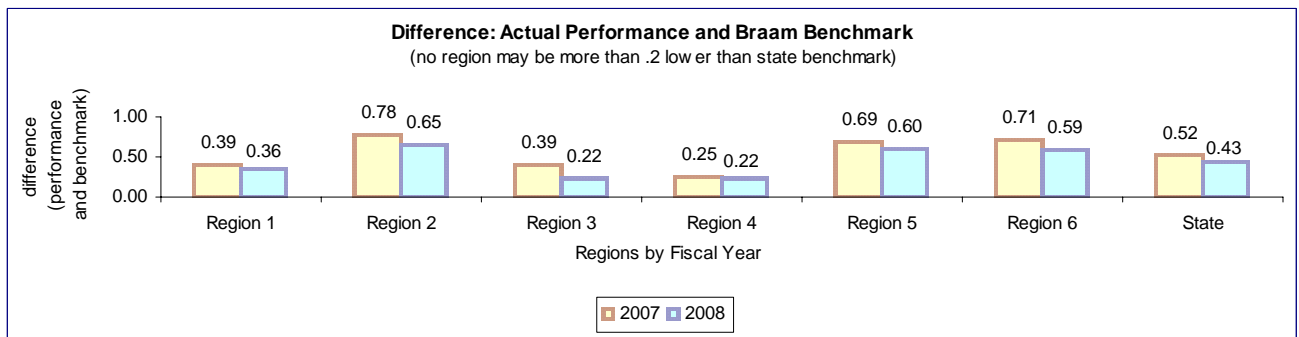
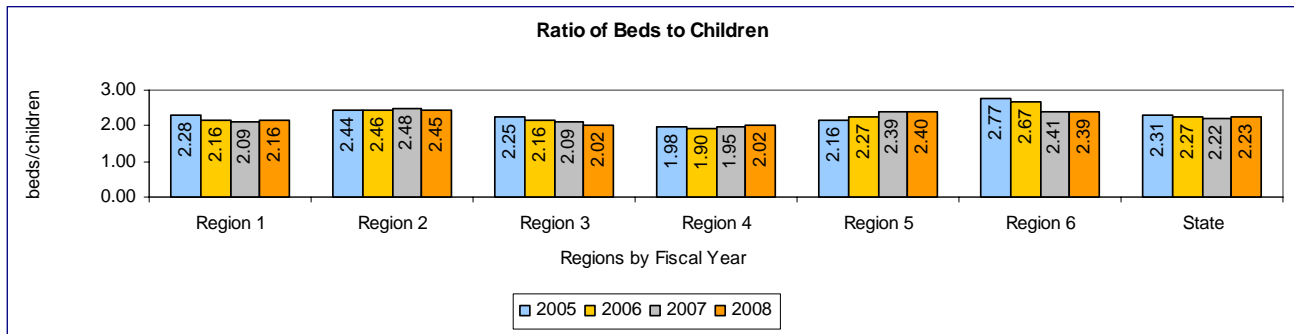
Findings on Outcomes and Benchmarks

Goal 1, Outcome 1

The average monthly ratio of licensed foster care beds to children in licensed foster care will be at least 2.0.

Benchmarks	Performance	Current Status and Comments
FY08=1.8 Statewide benchmark must be met, and no region's performance may be more than .2 lower than the statewide benchmark	FY08=2.23	Reached FY08 benchmark Statewide and regional expectations were achieved.

*Charts below are from Children's Administration's FY08 Performance Report.
 See also: Complete performance report data on this outcome in Appendix I, page 2.
 Summary of related informational reports, page 54*

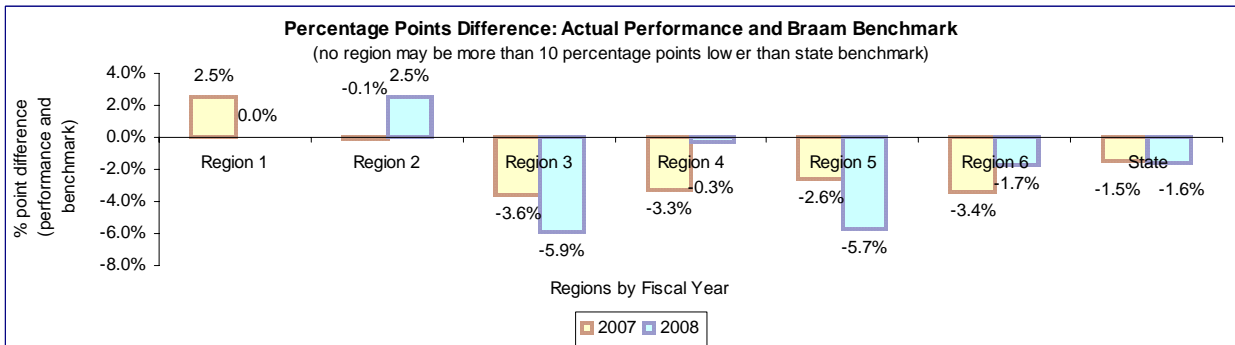
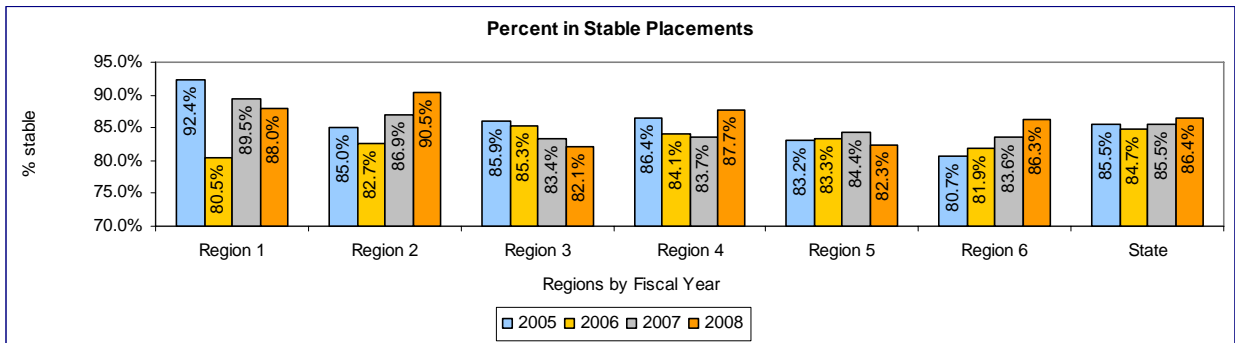


Goal 1, Outcome 2

The percentage of children who experience two or fewer placements during their current out-of-home episode of care will increase (*outcome measure based on percentage of youth entering care during the two previous fiscal years with 2 or fewer placements, with time-in-care specifications based on entry year*).

Benchmarks	Performance	Current Status and Comments
FY08=88% Statewide benchmark must be met, and no region's performance may be more than 10 percentage points lower than the statewide benchmark.	FY08=86.4%	Failed to reach FY08 benchmark: <u>updated compliance plan required</u>

Charts below are from Children's Administration's FY08 Performance Report. See also: Complete performance report data on this outcome in Appendix I, page 3. Summary of related informational reports, page 56

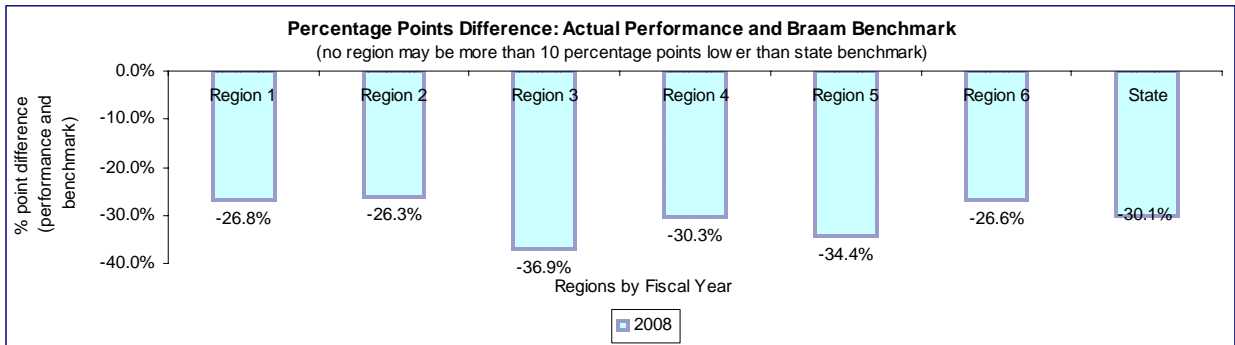
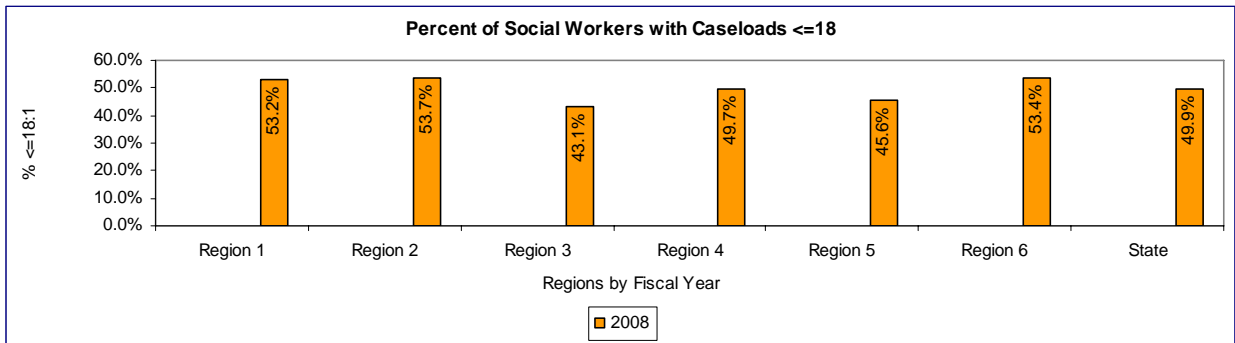


Goal 1, Outcome 3

Social workers will have caseloads at or below Council on Accreditation (COA) standards (18 child cases per caseworker for all other children) (*outcome measure based on the percentage of caseworkers with caseloads at or below COA standards*).¹⁴

Benchmarks	Performance	Current Status and Comments
FY08=80% Statewide benchmark must be met, and no region's performance may be more than 10 percentage points lower than the statewide benchmark.	FY08=49.9%	Failed to reach FY08 benchmark: <u>compliance plan required</u>

Charts below are from Children's Administration's FY08 Performance Report. See also: Complete performance report data on this outcome in Appendix I, page 4. Summary of related informational reports, page 59



¹⁴ The Revised Implementation Plan's language for this outcome refers to a separate caseload standard and weighting formula for special needs children. As discussed at the December 2008 Braam Panel meeting, the Panel has now eliminated this requirement.

MENTAL HEALTH- OUTCOMES AND BENCHMARKS

Findings on Outcomes and Benchmarks

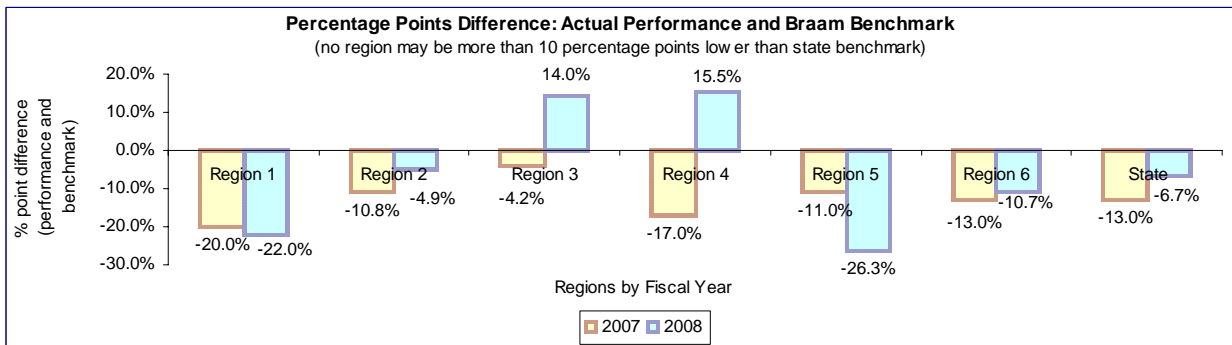
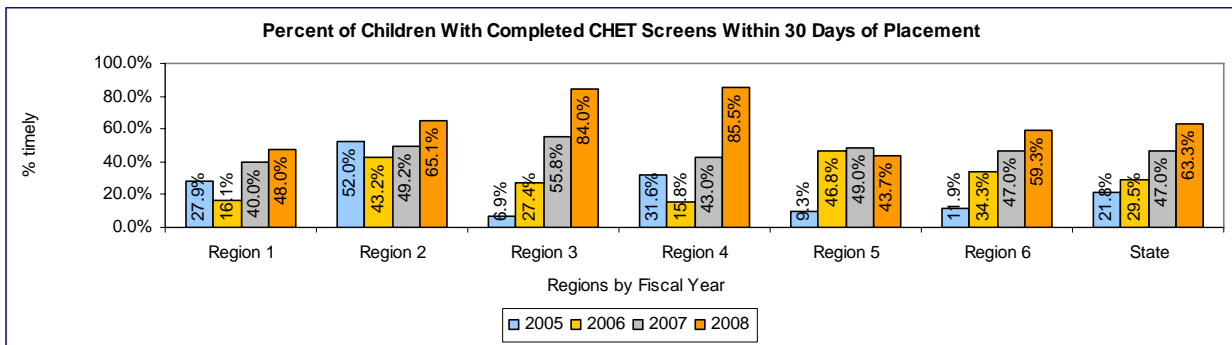
Goal 1, Outcome 2

Children in out-of-home care 30 days or longer will have completed and documented¹⁵ Child Health and Education Track (CHET) screens within 30 days of entering care.

Benchmarks	Performance	Current Status and Comments
FY08=70% Statewide benchmark must be met, and no region's performance may be more than 10 percentage points lower than the statewide benchmark.	Acceptable data not available¹⁶	Failed to reach FY08 benchmark: updated compliance plan required Panel has determined that benchmark has not been reached based on failure to provide data.

Note: The data below do NOT meet the Panel's definition of a complete CHET; however, the Panel has requested that CA submit these data until acceptable data are available.

*Charts below are from Children's Administration's FY08 Performance Report.
 See also: Complete performance report data on this outcome in Appendix I, page 5.
 Summary of related informational reports, page 63*



¹⁵ For Braam purposes, a completed and documented CHET is one in which age-appropriate screenings have been completed for all domains: Medical (EPSDT completed for all children); Developmental (developmental screening completed for children ages 0-60 months); Emotional-behavioral (screening completed for children ages 6-18 years); Educational (educational records received for school-aged children); and Connections (for all children).

¹⁶ Data provided by the Department do not meet Panel's definition of a complete CHET. Panel has determined that benchmark has not been reached based on lack of availability of appropriate data. Panel also notes that related data suggest that performance continues to fall short of benchmark. The Department is in the process of re-building a data management tool to allow tracking based on the Panel's requirements. Data concerning this measure will be reported in future monitoring reports.

Goal 1, Outcome 3

A shared planning meeting (SPM) focusing on the CHET screening results will be held within 60 days of each child's entry into care.

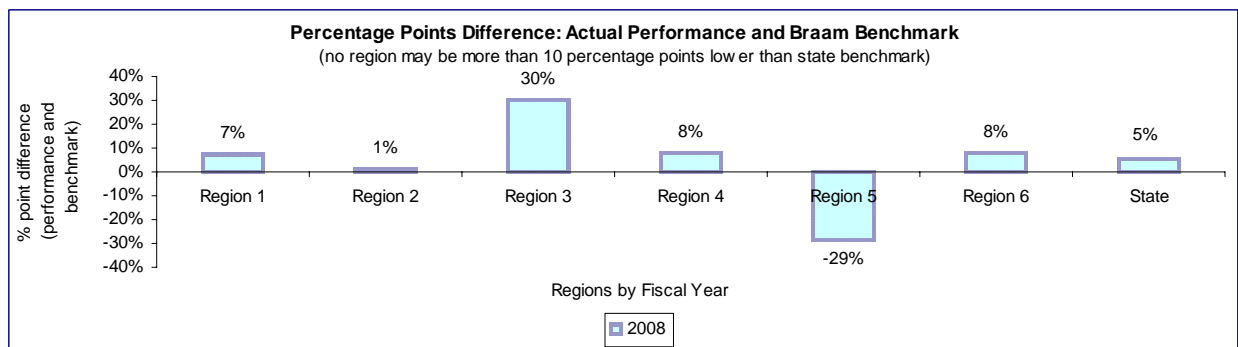
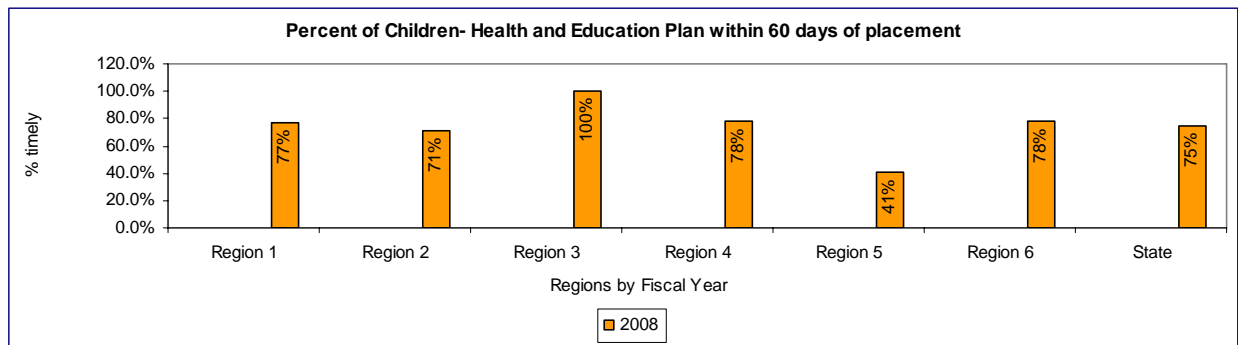
Benchmarks	Performance	Current Status and Comments
FY08=80% Statewide benchmark must be met, and no region's performance may be more than 10 percentage points lower than the statewide benchmark.	Acceptable data not available	Failed to reach FY08 benchmark: <u>compliance plan required</u> Panel has determined that benchmark has not been reached based on failure to provide data.
<i><u>Children's Administration's FY08 Performance Report indicates that no valid data are available, and that data will be obtained through FamLink and the CHET database.</u></i>		

Goal 2, Outcome 1

Children in out-of-home care will have health and education plans (developed based on the findings from all physical health, developmental, educational, mental health and substance abuse health screenings and assessments) in their ISSPs within 60 days of placement.

Benchmarks	Performance	Current Status and Comments
<p>FY08=70% Statewide benchmark must be met, and no region's performance may be more than 10 percentage points lower than the statewide benchmark.</p>	<p>FY08= 75%</p>	<p>Failed to reach FY08 benchmark: <u>compliance plan required</u></p> <p>Statewide benchmark was achieved, but regional requirements were not met. Performance in region 5 was more than 10 percentage points lower than the benchmark. Therefore the overall benchmark has not been reached.</p>

*Charts below are based on Children's Administration's ISSP Case Review Report.
See also: Complete information on this outcome in Appendix II, page I.
Summary of related informational reports, page 67*



Goal 2, Outcome 2

Children in out-of-home care will have health and education plans in their ISSPs updated every 6 months.

Benchmarks

Performance

Current Status and Comments

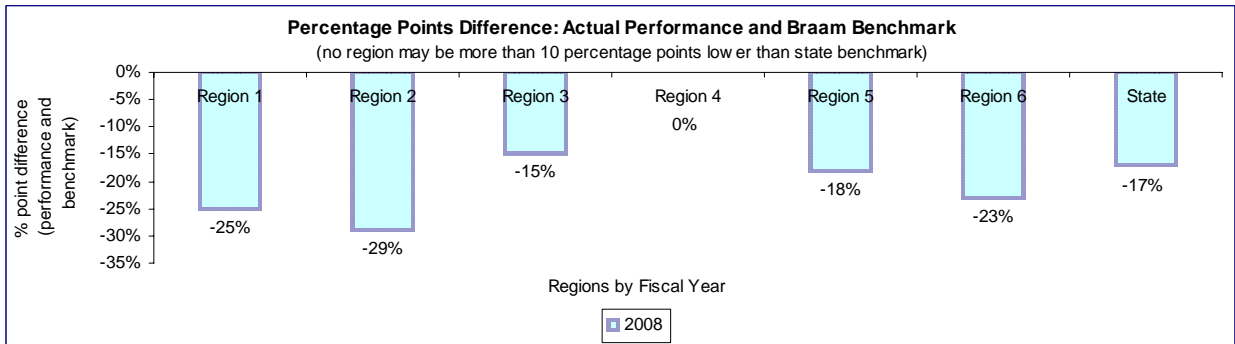
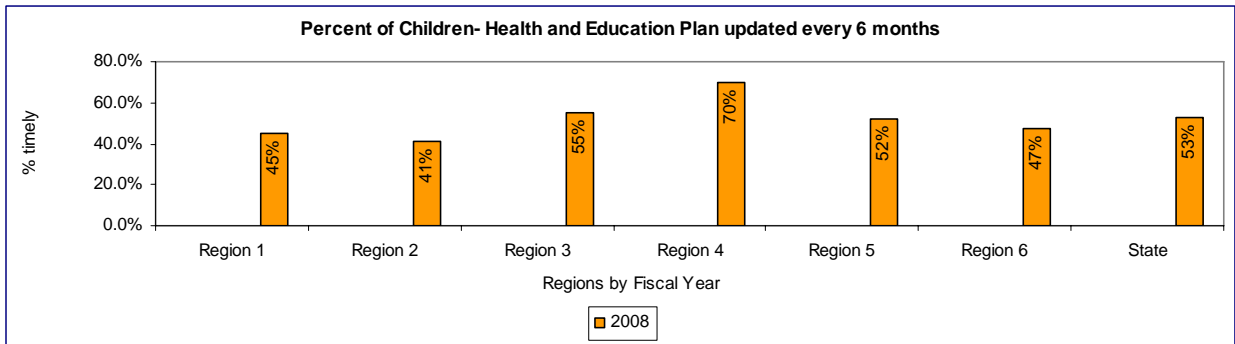
FY08=70%

Statewide benchmark must be met, and no region's performance may be more than 10 percentage points lower than the statewide benchmark.

FY08= 53%

Failed to reach FY08 benchmark: compliance plan required

*Charts below are based on Children's Administration's ISSP Case Review Report.
See also: Complete information on this outcome in Appendix II, page 1.
Summary of related informational reports, page 67*

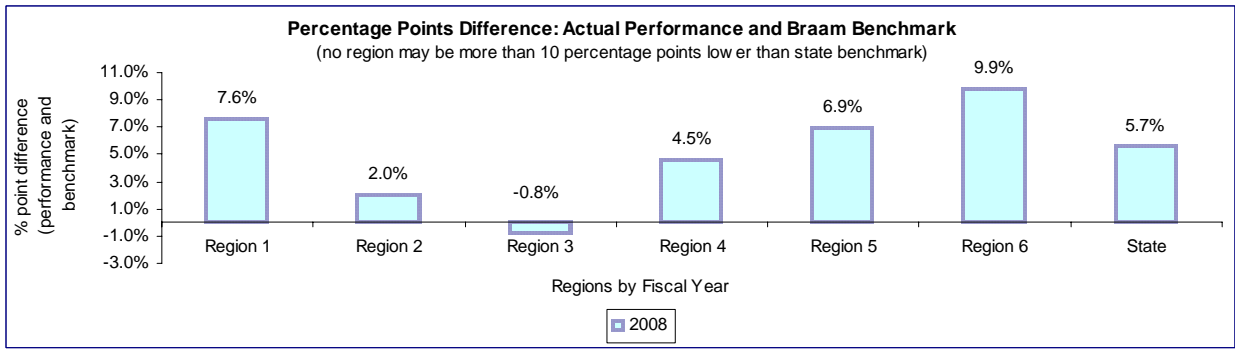
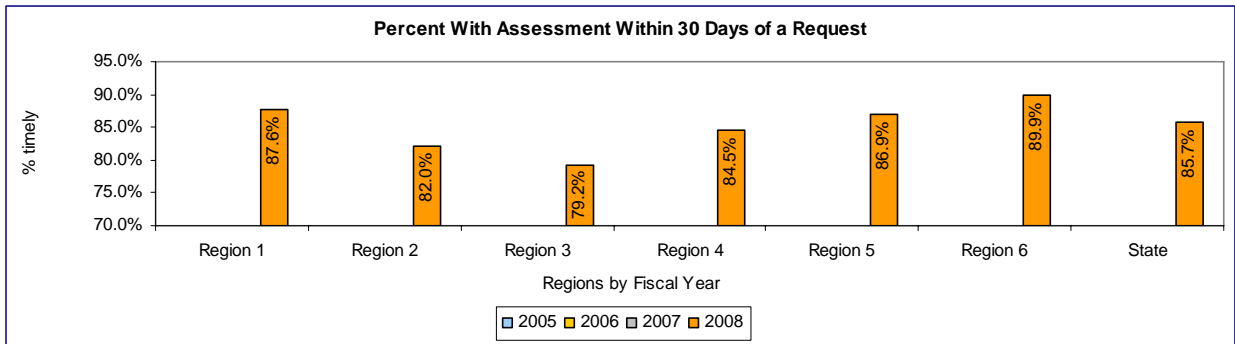


Goal 3, Outcome 1

Children in out-of-home care will receive a comprehensive mental health assessment within 30 days of a request for an assessment.¹⁷

Benchmarks	Performance	Current Status and Comments
FY08=80% Statewide benchmark must be met, and no region's performance may be more than 10 percentage points lower than the statewide benchmark.	FY08=85.7%	Reached FY08 benchmark Statewide and regional expectations were achieved.

Charts below are from Children's Administration's FY08 Performance Report. See also: Complete performance report data on this outcome in Appendix I, page 7.



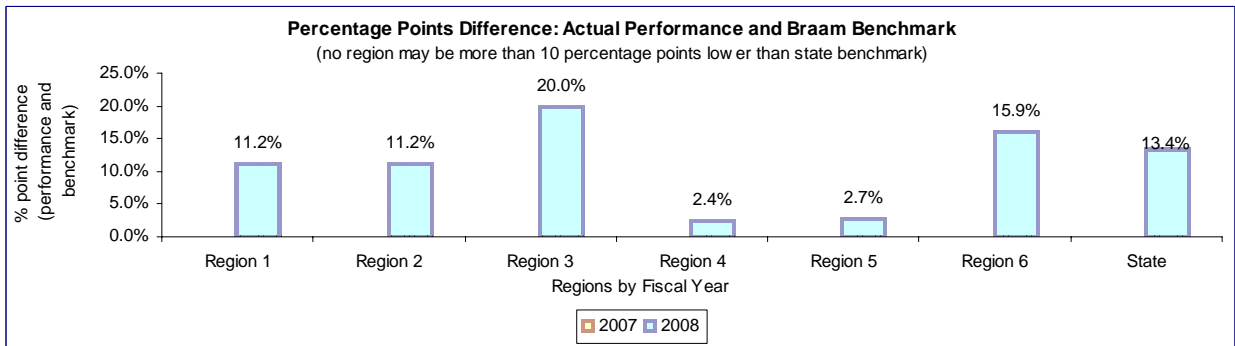
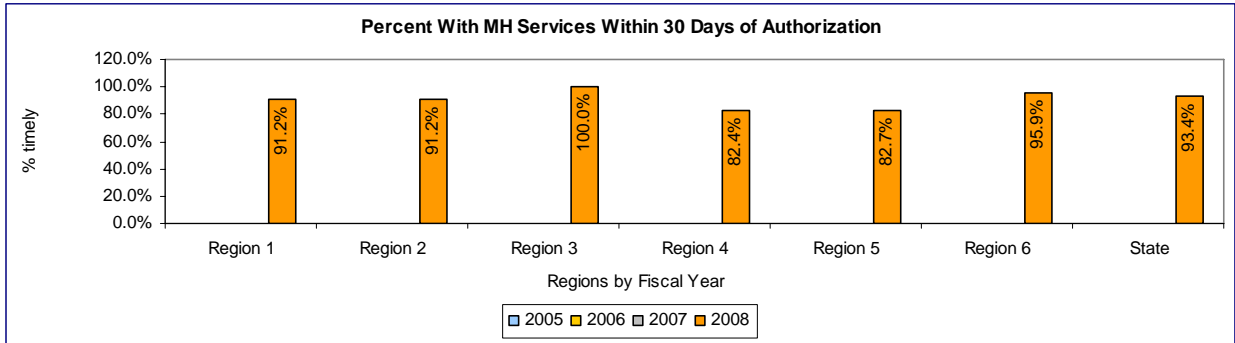
¹⁷ A request for an assessment may come from children who self identify or are identified by their caregiver, parent, social worker, medical provider, or through a valid screening mechanism, as needing one.

Goal 3, Outcome 3

Eligible children will receive services from a qualified mental health and/or substance abuse provider within 30 days of the completion of an assessment.

Benchmarks	Performance	Current Status and Comments
FY08=85% Statewide benchmark must be met, and no region's performance may be more than 10 percentage points lower than the statewide benchmark.	FY08= 93.4%	Reached FY08 benchmark Statewide and regional expectations were achieved.

*Charts below are from Children's Administration's FY08 Performance Report.
 See also: Complete performance report data on this outcome in Appendix I, page 9.
 Summary of related informational reports, page 65*



Goal 3, Outcome 4

A shared planning meeting will be held by DCFS to develop an appropriate alternative services plan when a child is found ineligible for or denied mental health treatment or substance abuse assessments or treatment services.

Note: For the purposes of this Monitoring Report, a review of the 48 cases in 2008¹⁸ in which children were denied or found ineligible for services was conducted. Compliance was not based on whether a shared planning meeting was held, as stated in the outcome, but on whether the child's needs were found to have been met. Panel will work with parties on a revised approach to this outcome for future monitoring reports.

Benchmarks	Performance	Current Status and Comments
FY08=80% Statewide benchmark must be met, and no region's performance may be more than 10 percentage points lower than the statewide benchmark.	FY08= 91.7%	Reached FY08 benchmark

*Chart below is from summary of case review submitted by Children's Administration.
Shaded rows were counted by the Panel as out of compliance.
Summary of related informational reports, see page 66.*

Outcome for Youth	Number of Youth
CA agreed youth did not have a mental health issue and no services were needed	13
CA believed the youth required counseling or other evaluation services, which were provided	14
CA felt youth did have a mental health issue and there was a reapplication for services, which were provided or is in process	5
Youth moved and needs are met in new location.	4
Youth placed in BRS.	3
Child moved out of service area (out of state)	3
Youth refused services	2
Services not being provided and there is a need. Department is exploring options.	1
No response yet from worker	3
Total	48

¹⁸ One additional case was also found ineligible for services, but could not be reviewed due to confidentiality issues. It is not counted in this analysis.

Compliance not reviewed in this report

Outcome	Benchmarks	Current Status and Comments
<p><u>Goal 1, Outcome 1</u></p> <p>Children will be screened by an appropriate health professional for immediate and urgent physical and mental health needs, including assessment for infectious and communicable diseases, within 72 hours of entering out-of-home care.</p>	<p>FY09= 80%</p>	<p>Compliance for FY09 will be reviewed in March 2010 Monitoring Report.</p> <p>Baseline data for FY08 are due, but were not provided. According to Revised Implementation Plan, the first period subject to compliance monitoring is FY09. If data are not provided, outcome will be considered out of compliance.</p>
<p><u>Goal 1, Outcome 4</u></p> <p>Children age 3 and under in out-of-home care will be referred to the Infant Toddler Early Intervention Program (ITEIP) within 2 workdays of identification of concerns about developmental delays from their CHET screens.</p>	<p>FY09= 85%</p>	<p>Compliance for FY09 will be reviewed in March 2010 Monitoring Report.</p> <p>Panel previously approved a compliance plan for the provision of data, under which data for this outcome are expected beginning with FY09.</p>
<p><u>Goal 3, Outcome 2</u></p> <p>Children in out-of-home care will be screened for mental health and substance abuse needs every 12 months.</p>	<p>FY08=80%</p>	<p>Compliance for 2008 will be reviewed in October 2009 Monitoring Report</p> <p>Medicaid billing data is required to generate this report; will be available for 2008 in spring 2009.</p> <p>Benchmark was not reached in 2007; compliance plan was subsequently approved.</p>
<p><u>Goal 4, Outcome 1</u></p> <p>Children will receive behavioral health treatment services from the same individual provider for each episode of mental health treatment and/or substance use treatment (from admission to discharge), except where necessary to maintain or improve the quality of care for the child.</p>	<p>CY08=85%</p>	<p>Compliance for 2008 will be reviewed in October 2009 Monitoring Report</p> <p>Foster parent survey data are used to assess performance on this outcome. Data for 2008 will be available in summer 2009.</p> <p>Benchmark was reached in 2007.</p>

FOSTER PARENT TRAINING AND INFORMATION- OUTCOMES AND BENCHMARKS

Findings on Outcomes and Benchmarks

In the Foster Parent Training and Information area, there are no outcomes based on administrative data or case review data. Therefore, there were no FY08 benchmarks and no new findings to present in this report.

Compliance not reviewed in this report

Outcome	Benchmarks	Current Status and Comments
<u>Outcome 1</u> Licensed caregivers will report adequate training for their roles and responsibilities (including, but not limited to, management of emotional, behavioral, developmental and medical problems, educational advocacy, strategies for engagement with birth parents, and cultural competency skills).	CY08=90%	Compliance for 2008 will be reviewed in October 2009 Monitoring Report Foster parent survey data are used to assess performance on these outcomes. Data for 2008 will be available in summer 2009.
<u>Outcome 2</u> Licensed caregivers will report adequate support for their roles and responsibilities (including, but not limited to, crisis support, timely notification about case planning meetings, and cultural competency resources).	CY08=85%	Benchmarks were not reached in 2007; compliance plans were subsequently approved.
<u>Outcome 3</u> Licensed caregivers will report adequate provision of information about the needs of children placed with them (including, but not limited to, behavioral, medical, developmental and educational needs).	CY08=85%	

UNSAFE/ INAPPROPRIATE PLACEMENT- OUTCOMES AND BENCHMARKS

Findings on Outcomes and Benchmarks

<p>Goal 1, Outcome 1 Children will not be placed in institutions not designed for placement of foster children, such as adult mental hospitals or detoxification facilities, where children and adults are commingled.</p>		
Benchmarks	Performance	Current Status and Comments
FY08=0	FY08= 0	Reached FY08 benchmark
<p><i>Information below is from memo from Mental Health Division regarding this outcome See also: Performance report data on this outcome in Appendix I, page 14-15.</i></p>		
<p>Verified:</p> <p>All Evaluation and Treatment Centers (E&Ts) and Communities hospitals to which foster children were admitted in FY 2008 have psychiatric units strictly specified for children.</p> <p>Voluntary Admissions:</p> <p>Number in Evaluation and Treatment Centers paid by the RSNs: 12</p> <p>Number in Community Hospitals based on MMIS Claims data: 159</p> <p>Involuntary Admissions:</p> <p>Number in Evaluation and Treatment Centers: 18</p> <p>Number in Community Hospitals: 42</p>		

Goal 1, Outcome 2

Children will not stay overnight at DSHS offices or in apartments or hotels *unless*:

- An appropriate licensed foster family or relative caregiver is not available, administrative approval has been granted, and adequate supervision is provided for the child as required in the Department's November 2004 memo to CA staff, or
- The youth has an Independent Living Plan authorizing such placement.

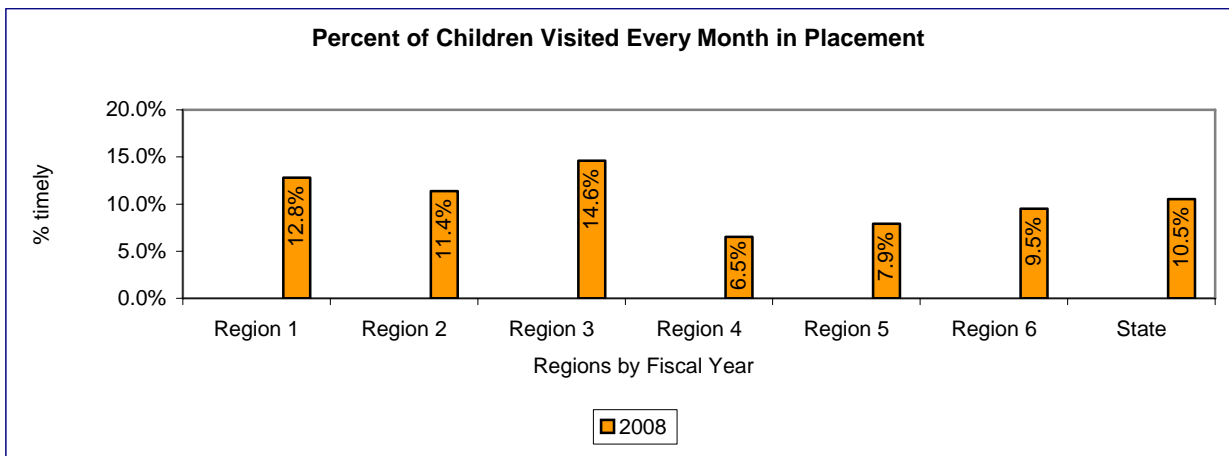
Benchmarks	Performance	Current Status and Comments
FY08=0	FY08= 0 <i><u>Note: Department submitted materials indicating that 3 placements of this type were made and met appropriate exceptions. All placements were in hotels and supervised by staff. These exceptions have been reviewed and deemed acceptable by the Panel.</u></i>	Reached FY08 benchmark
<p style="text-align: center;"><i><u>See also: Performance report data on this outcome in Appendix I, page 16.</u></i> <i><u>Summary of related informational reports, see page 69.</u></i></p>		

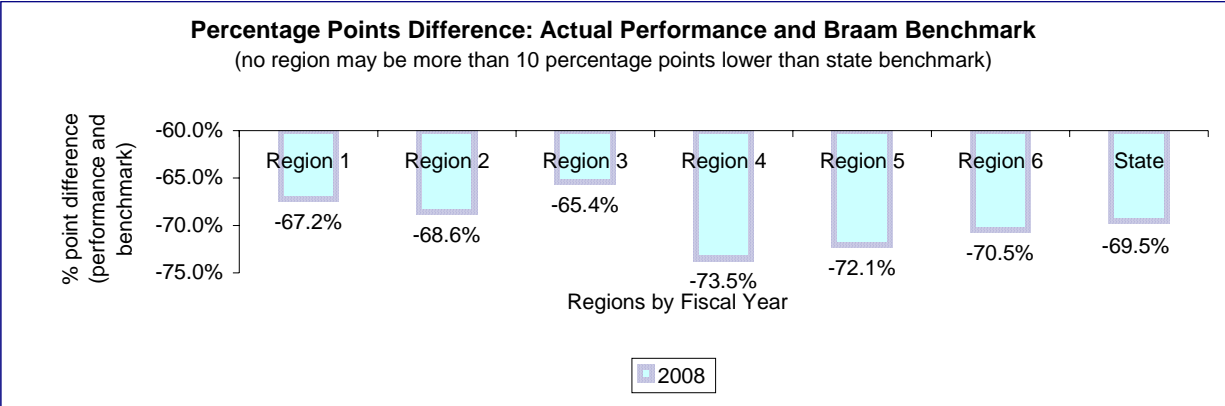
Goal 1, Outcome 6

Children will receive a private and individual face-to-face health and safety visit from an assigned caseworker at least once every calendar month, with no visit being more than 40 days after the previous visit.

Benchmarks	Performance	Current Status and Comments
<p>CY07=85% CY08=95% Statewide benchmark must be met, and no region's performance may be more than 10 percentage points lower than the statewide benchmark.</p>	<p>FY08 (administrative data)= 10.5% CY07 (foster parent survey)= 43.2%</p> <p><u>Data notes:</u> <i>FY08 is the first period for which administrative data have been reported for this outcome. These data represent the percentage of children visited every calendar month they were in placement, but do not address the issue of whether these visits occurred more than 40 days apart (as stated in the outcome).</i></p> <p><i>CY07 data from the foster parent survey (reported previously in October 2008 monitoring report) are included here for comparison. These data represent the percentage of foster parents reporting that children in their home had a private and individual face-to-face visit with their social worker at least once per month.</i></p> <p><i>In future reports, compliance will be assessed based on administrative data.</i></p> <p><u>Additional note:</u> <i>CA implemented a policy requiring monthly visits in September 2008. This date is after the end of FY08 (July 2007- June 2008), which was the period assessed for this Monitoring Report.</i></p>	<p>Failed to reach FY08 / CY07 benchmark: <u>updated compliance plan required</u></p>

Charts below are from Children's Administration's FY08 Performance Report. See also: Complete performance report data on this outcome in Appendix I, page 23.



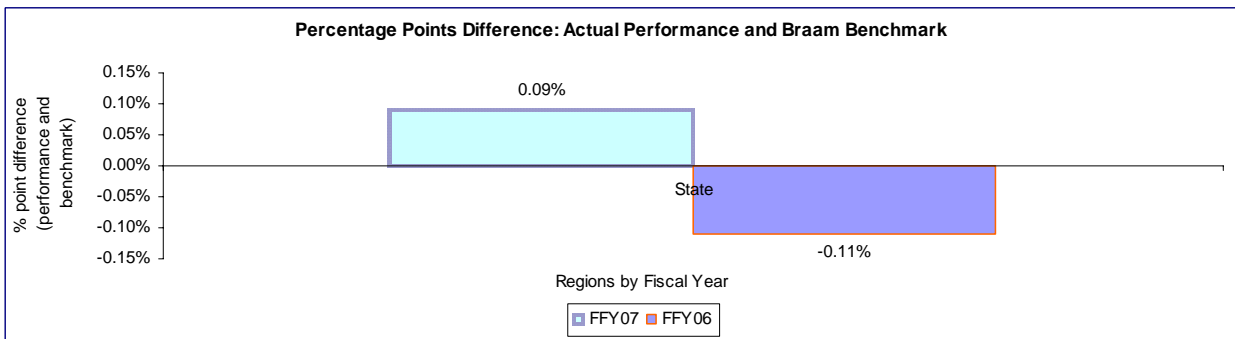
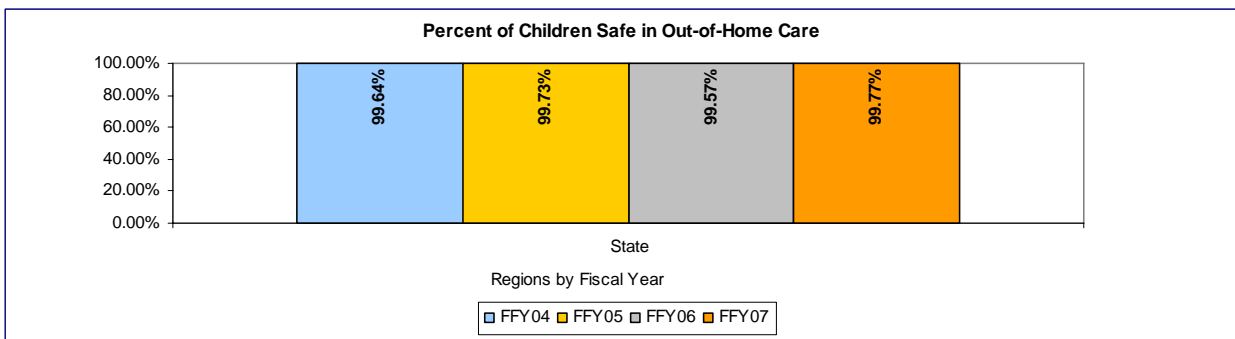


Goal 2, Outcome 1

The percentage of children who are not victims of a founded report of child abuse or neglect by a foster parent or facility staff member will meet or exceed the federal Child and Family Services Review (round 2) standard.

Benchmarks	Performance	Current Status and Comments
FY07= 99.68% ¹⁹	FFY07= 99.77%	Reached FY07 benchmark

Charts below are from Children’s Administration’s FY08 Performance Report. See also: Complete performance report data on this outcome in Appendix I, page 24.



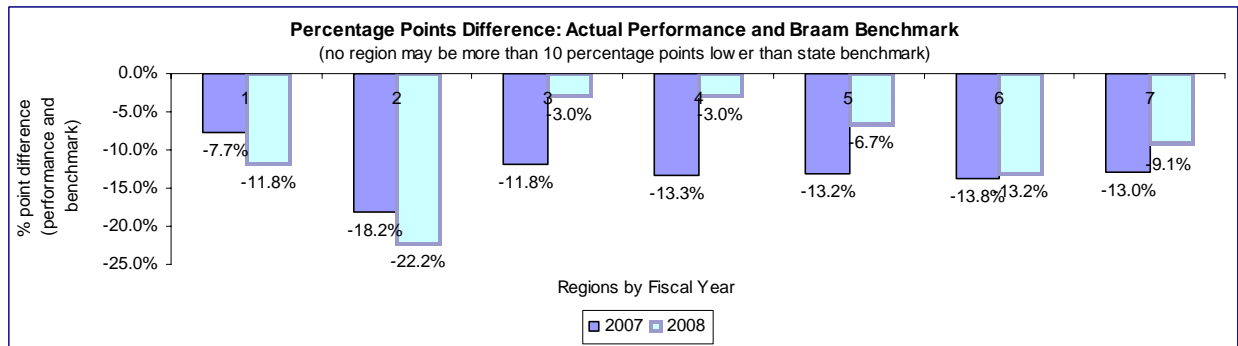
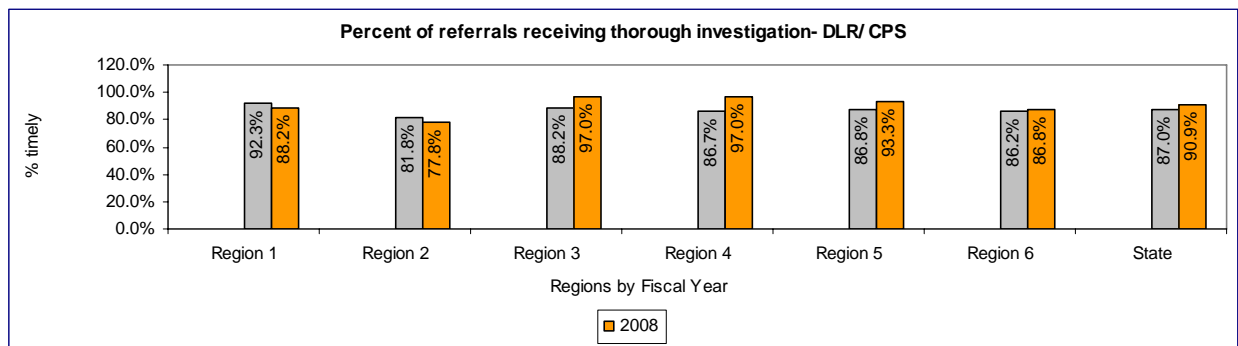
¹⁹ Revised Implementation Plan specifies benchmarks by state fiscal year. However, because this is a federal measure that is calculated by federal fiscal years, the Panel will shift its monitoring timeframes accordingly. FFY07 is the most recent data available and is evaluated here.

Goal 2, Outcome 2

All referrals alleging child abuse and neglect of children in out-of-home care will receive thorough investigation by the Division of Licensing Resources (DLR) pursuant to CA policy and timeline and with required documentation.

Benchmarks	Performance	Current Status and Comments
FY08=100%	FY08= 90.9% ²⁰	Failed to reach FY08 benchmark: <u>updated compliance plan required</u>

Charts below are based on Children’s Administration’s case review report— see additional information on this outcome in Appendix II, page 14. Summary of related informational reports, see page 70.



²⁰ Data reported here are based on a case review that examines the *thoroughness* of DLR/ CPS investigations, but does not address whether the investigation took place within CA policy timelines (as stated in the outcome). Panel is working with parties to develop a means of incorporating data related to timeliness into compliance reporting for this outcome; however, this issue remains unresolved. In any event, performance on this outcome falls short of the benchmark and an updated compliance plan is required.

Compliance not reviewed in this report

Outcome	Benchmarks	Current Status and Comments
<p><u>Goal 1, Outcome 3</u> Children identified as sexually aggressive (SAY) pursuant to the statutory definition will be placed with caregivers who have received specialized training and have a plan developed to address safety and supervision issues.</p>	<p>CY08=95%</p>	<p>Compliance for 2008 will be reviewed in October 2009 Monitoring Report</p> <p>Foster parent survey data are used to assess performance on this outcome. Data for 2008 will be available in summer 2009.</p> <p>Benchmark not reached in 2007; compliance plan was subsequently approved.</p>
<p><u>Goal 1, Outcome 4</u> Children identified as physically assaultive or physically aggressive (PAY) pursuant to the statutory definition will be placed with caregivers who have received specialized training and have a plan developed to address safety and supervision issues.</p>	<p>CY08=95%</p>	<p>Compliance for 2008 will be reviewed in October 2009 Monitoring Report</p> <p>Foster parent survey data are used to assess performance on this outcome. Data for 2008 will be available in summer 2009.</p> <p>Benchmark not reached in 2007; compliance plan was subsequently approved.</p>
<p><u>Goal 1, Outcome 5</u> Medically fragile children will be connected to ongoing and appropriate medical care and placed with caregivers who have specialized skills or receive consultation and ongoing training regarding their caretaking responsibilities for the medical condition.</p>	<p>CY08=95%</p>	<p>Compliance for 2008 will be reviewed in October 2009 Monitoring Report</p> <p>Foster parent survey data are used to assess performance on this outcome. Data for 2008 will be available in summer 2009.</p> <p>Benchmark not reached in 2007; compliance plan was subsequently approved.</p>

SIBLING SEPARATION- OUTCOMES AND BENCHMARKS

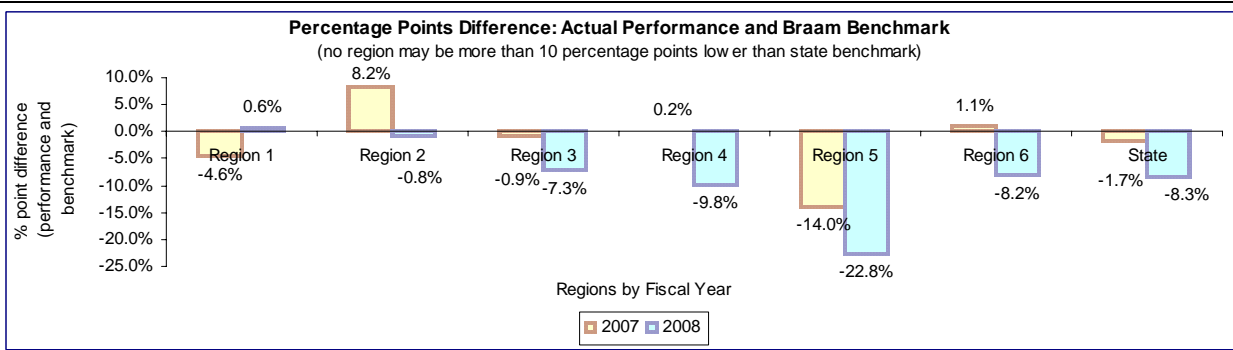
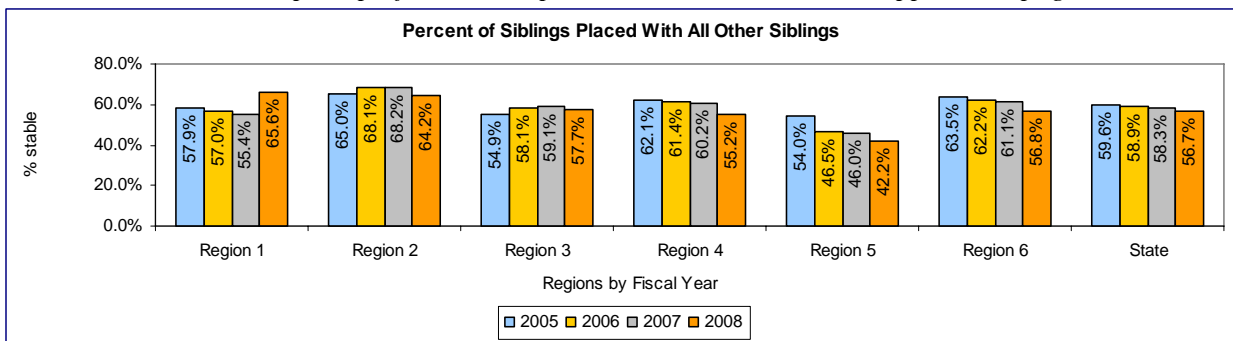
Findings on Outcomes and Benchmarks

Goal 1, Outcome 1

Children in out-of-home care will be placed with all siblings who are also in out-of-home care whenever possible.

Benchmarks	Performance	Current Status and Comments
FY08=65% Statewide benchmark must be met, and no region's performance may be more than 10 percentage points lower than the statewide benchmark.	FY08= 56.7%	Failed to reach FY08 benchmark: <u>updated compliance plan required</u>

*Charts below are from Children's Administration's FY08 Performance Report.
See also: Complete performance report data on this outcome in Appendix I, page 25*

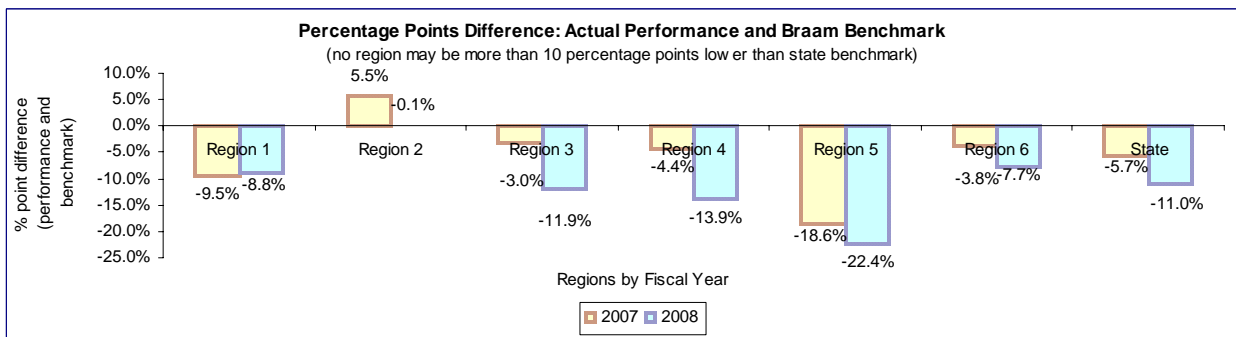
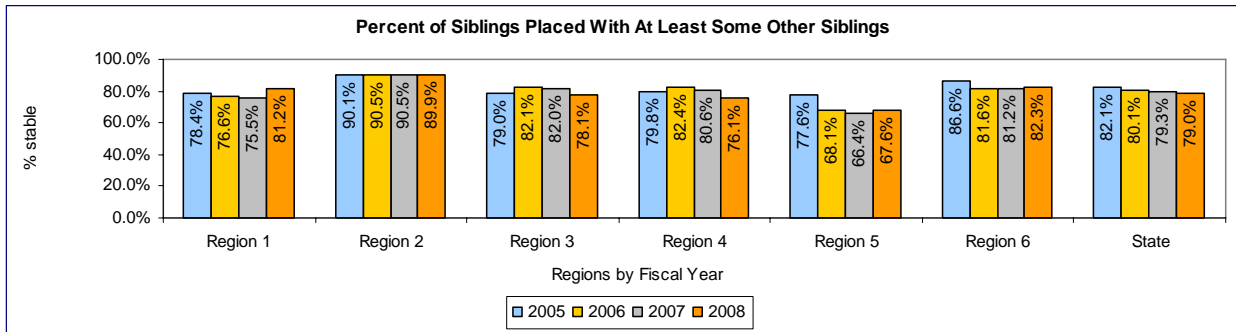


Goal 1, Outcome 2

Children in out-of-home care will be placed with at least one sibling who is also in out-of-home care whenever possible.

Benchmarks	Performance	Current Status and Comments
FY08=90% Statewide benchmark must be met, and no region's performance may be more than 10 percentage points lower than the statewide benchmark.	FY08= 79%	Failed to reach FY08 benchmark: <u>updated compliance plan required</u>

*Charts below are from Children's Administration's FY08 Performance Report.
See also: Complete performance report data on this outcome in Appendix I, page 26*



Compliance not reviewed in this report

Outcome	Benchmarks	Current Status and Comments
<p><u>Goal 2, Outcome 1</u> Children placed apart from their siblings will have two or more monthly visits or contacts (not including staffing meetings or court events) with some or all of their siblings.</p> <ul style="list-style-type: none"> • If the CA or the court determines that visitation/contact poses a risk to either child's health, safety or welfare, this finding will be approved by the supervisor and documented in the child's file. 	<p>CY08=75%</p>	<p>Compliance for 2008 will be reviewed in October 2009 Monitoring Report</p> <p>Foster parent survey data are used to assess performance on this outcome. Data for 2008 will be available in summer 2009.</p> <p>Benchmark not reached in 2007; compliance plan was subsequently approved. CA implemented new sibling visit policy in September 2008.</p>

SERVICES TO ADOLESCENTS- OUTCOMES AND BENCHMARKS

Findings on Outcomes and Benchmarks

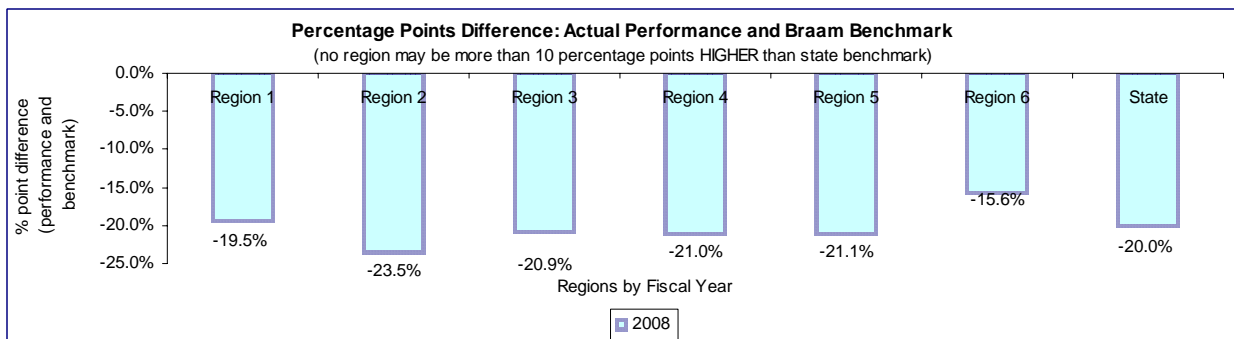
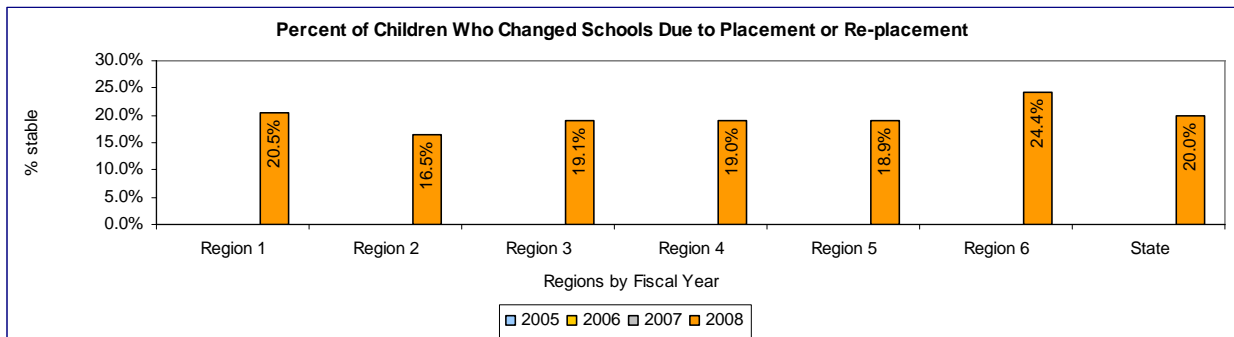
Goal 2, Outcome 1

The number of children (*excluding youth placed with relatives and/or with siblings*) who experience a change in school placement when they enter out-of-home care or change placement during the school year will decrease.

Benchmarks	Performance	Current Status and Comments
FY08=40% Statewide benchmark must be met, and no region's performance may be more than 10 percentage points higher than the statewide benchmark.	FY08= 20%	Reached FY08 benchmark Statewide and regional expectations were achieved.

*Charts below are from Children's Administration's FY08 Performance Report.
 See also: Complete performance report data on this outcome in Appendix I, page 28*

*Note: For this outcome, performance that is lower than the benchmark is in compliance. Therefore, where the chart shows a negative number for the difference between a region's performance and the benchmark, this region has performed *better* than the benchmark. For this outcome, this is the case for all regions and the state.



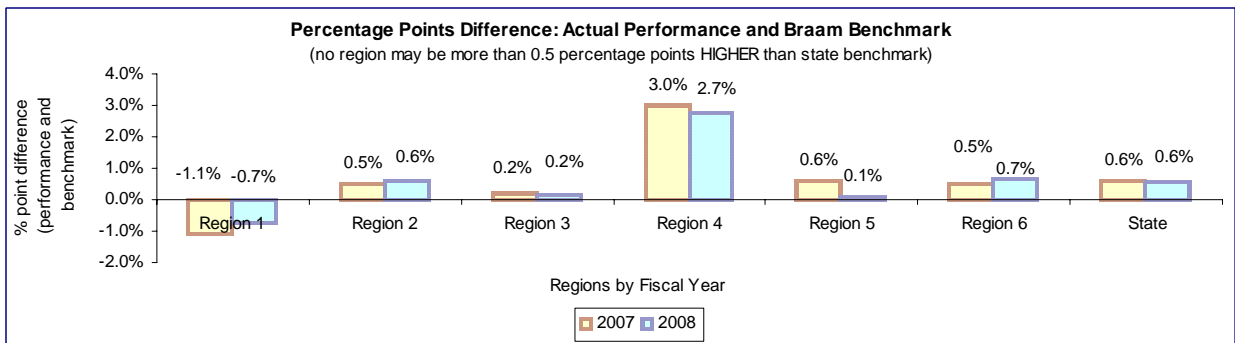
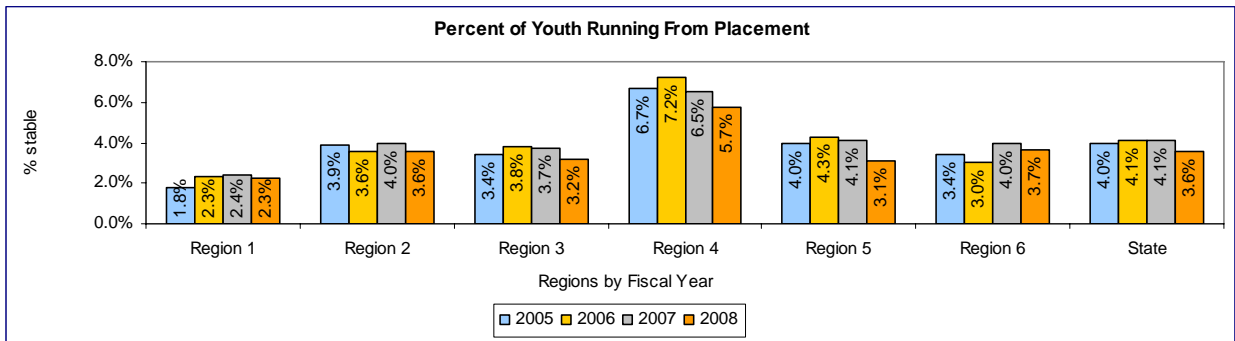
Goal 3, Outcome 1

The percentage of children who run from out-of-home care placements during the fiscal year will decrease.

Benchmarks	Performance	Current Status and Comments
<p>FY08=3.0% Statewide benchmark must be met, and no region's performance may be more than .5 percentage points higher than the statewide benchmark.</p>	<p>FY08= 3.6%</p>	<p>Failed to reach FY08 benchmark: <u>updated compliance plan required</u></p>

*Charts below are from Children's Administration's FY08 Performance Report.
 See also: Complete performance report data on this outcome in Appendix I, page 30.
 Summary of related informational reports, page 72*

*Note: For this outcome, performance that is lower than the benchmark is in compliance. Therefore, where the chart shows a negative number for the difference between a region's performance and the benchmark, this region has performed *better* than the benchmark. For this outcome, this is the case for region 1.



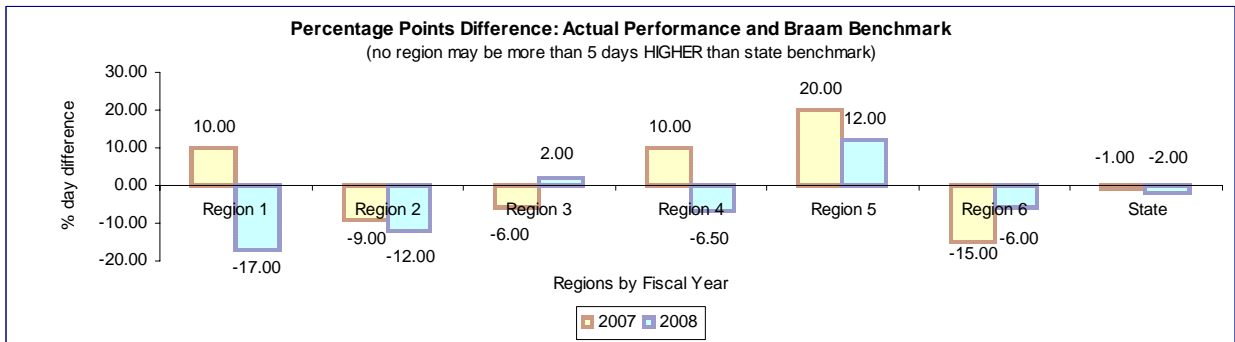
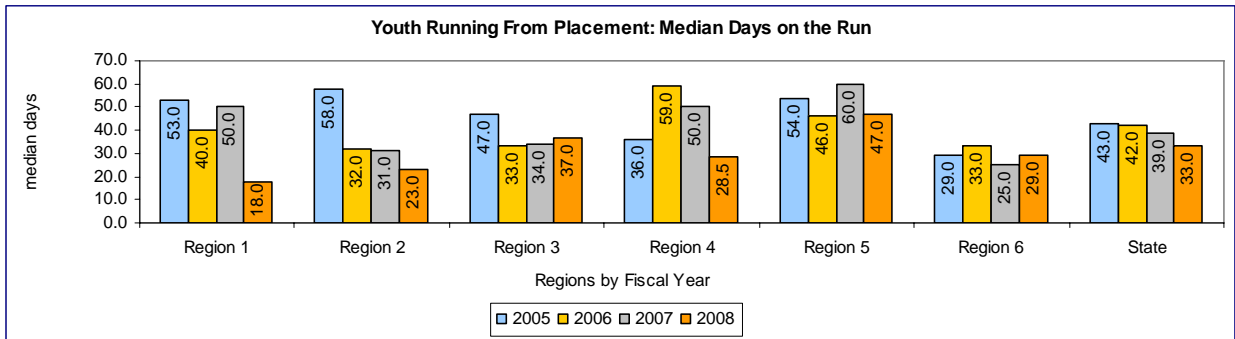
Goal 3, Outcome 2

The median number of days that children are on runaway status will decrease.

Benchmarks	Performance	Current Status and Comments
FY08= 35 days Statewide benchmark must be met, and no region's performance may be more than 5 days higher than the statewide benchmark.	FY08= 33 days	Failed to reach FY08 benchmark: <u>updated compliance plan required</u> Statewide benchmark was achieved, but regional requirements were not met. Performance in region 5 was more than 5 days higher than the statewide benchmark. Therefore the overall benchmark has not been reached.

*Charts below are from Children's Administration's FY08 Performance Report.
 See also: Complete performance report data on this outcome in Appendix I, page 31.
 Summary of related informational reports, page 73*

*Note: For this outcome, performance that is lower than the benchmark is in compliance. Therefore, where the chart shows a negative number for the difference between a region's performance and the benchmark, this region has performed *better* than the benchmark. For this outcome, this was the case for regions 1 and 4 in 2008, regions 2 and 3 in 2007, a region 6 and the state as a whole in both years.



Compliance not reviewed in this report

Outcome	Benchmarks	Current Status and Comments
<p><u>Goal 2, Outcome 2</u> The percentage of youth in out-of-home placement in grade 9 who remained in placement continuously through grade 12 who graduate from high school on time with a regular or adult (IEP) diploma, including students with disabilities who graduated within the number of years designated in their IEP, will increase.</p>	<p>FY08=50%</p>	<p>Compliance for 2008 will be reviewed in October 2009 Monitoring Report</p> <p>A data match with Office of the Superintendent of Public Instruction is required to generate this report; will be available for 2008 in spring 2009.</p>
<p><u>Goal 2, Outcome 3</u> A multi-disciplinary staffing meeting will be held six months prior to a youth's exit from foster care to address issues related to transition to independence.</p>	<p>CY08=75%</p>	<p>Compliance for 2008 will be reviewed in October 2009 Monitoring Report</p> <p>Panel requires data from FamLink (or, if not available, from a survey of youth) by August 2009 for the October 2009 Monitoring Report.</p>

PART III: INFORMATIONAL REPORTS

In the Revised Implementation Plan (July 3, 2008), a number of areas identified as outcomes in the original Implementation Plan were converted to “Informational Reports.” Requests for Informational Reports were also added in several new areas.

As stated in the Revised Implementation Plan, “in areas identified for Informational Reports, the Panel will require annual submission of data by the Department (including performance by region and by racial/ethnic subcategories), but will not set forth or assess compliance with annual benchmarks. Informational Reports will provide the Panel, parties, and stakeholders with extensive data to better understand progress toward Braam goals and outcomes. Upon review of Informational Reports, the Panel reserves the right to reinstate or develop new outcomes and benchmarks.”

Although many of the Informational Reports are closely related to Braam outcomes, the Panel is presenting these reports separately in this Monitoring Report. In the section of the Monitoring Report devoted to Braam outcomes (Part II), the Panel has made findings related to the Department’s performance with respect to the benchmarks, and has required compliance plans in areas in which benchmarks are not reached. In this section of the Monitoring Report (Part III), devoted to the Informational Reports, there are no benchmarks for performance; therefore, there is no assessment of compliance.

Beginning on page 49, the Monitoring Report lists the Informational Reports required under the Revised Implementation Plan and the status of these Reports. Beginning on page 53, a summary is provided of the information found in the Informational Reports submitted by Children’s Administration to date. Copies of the complete Informational Reports are included in Appendix III.

STATUS OF INFORMATIONAL REPORTS

Status of Informational Reports

The Revised Implementation Plan requires informational reports for each area of the settlement agreement, and specifies due dates for the submission of these data based on data source.

Informational Reports due January 2009

The following informational reports were required by January 2009. The table below summarizes the status of these reports.

Informational Report	Status
Placement Stability	
<p><u>Placement Stability- goal 1, outcome 1 (ratio of licensed beds to children in foster care)</u></p> <ol style="list-style-type: none"> 1. Ratio of beds to children by subcategories: Caregivers with preferences/required equipment for specific age groups (infant, child, adolescent) 2. Ratio of beds to children by subcategories: Level of care: regular family foster care, enhanced family foster care, therapeutic foster care, congregate care, respite care 3. Foster home retention: Percentage of foster homes remaining active 1, 2, 3, 4 and 5 years after being licensed 	<p>Reports #1 & 3 provided by CA and summarized in this section. CA has indicated that it is not possible to generate report #2 because homes are not licensed by care level.</p>
<p><u>Placement Stability- goal 1, outcome 2 (two or fewer placements)</u></p> <ul style="list-style-type: none"> o Two or fewer placements- expanded report based on outcome: Year-by-year data showing the percentage of youth entering care during the previous five fiscal years who experience two or fewer placements during their current episode of out-of-home care (with time in care specifications based on entry year). o Multiple placements- Frequency report showing the number of children experiencing multiple placements, by number of placements. 	<p>Reports provided by CA and summarized in this section.</p>
<p><u>Placement stability- goal 1, outcome 3 (caseload size)</u></p> <ul style="list-style-type: none"> o Caseload size by office- Percentage caseworkers with caseloads at or below Council on Accreditation (COA) standards 	<p>Reports provided by CA on a monthly basis since September 2008. Summarized in this section.</p>
<p><u>Placement stability- additional informational reports</u></p> <p>Matching between a child's needs and the capacity of the placement to meet those needs</p> <ul style="list-style-type: none"> o Percentage of children placed in relative placements o Percentage of children placed in foster homes licensed for the age of the child placed o Percentage of children for whom Family Team Decision Meeting (FTDM) was held within 72 hours of placement o Percentage of children who change placements within the first 8 days of entry into out-of-home care 	<p>Reports provided by CA and summarized in this section.</p>
Mental Health	
<p><u>Mental Health- Goal 1, Outcome 2- CHET screening within 30 days</u></p> <ul style="list-style-type: none"> o Percentage of children with completed CHET screens within 45 and 60 days of entry into care o Medical screening <ul style="list-style-type: none"> o Percentage of children with completed EPSDT exams within 30, 45 and 60 days of entry into care 	<p>Reports provided by CA and summarized in this section, <i>except</i> report on medical screening. CA has indicated that this</p>

<ul style="list-style-type: none"> ○ Developmental screening <ul style="list-style-type: none"> ○ Percentage of children ages 0-60 months with completed developmental screens within 30, 45 and 60 days of entry into care ○ Emotional/ behavioral screening <ul style="list-style-type: none"> ○ Percentage of children ages 6-18 years with completed Child Behavior Checklists within 30, 45 and 60 days of entry into care ○ Educational records <ul style="list-style-type: none"> ○ Percentage of school-aged children for whom educational records are received within 30, 45 and 60 days of entry into care 	<p>report will be provided in June 2009.</p>
<p><u>Mental Health Goal 1, Outcome 3- Shared planning meeting focused on the CHET screening results</u></p> <ul style="list-style-type: none"> ○ Attendance at Shared Planning Meetings (SPM)- Percentage of SPMs focused on CHET screening results attended by: children age 12 and above, caregivers, birth parents/legal guardians, tribal representatives (when applicable), and children’s representatives (note: report should provide separate information on each type of individual) 	<p>Report not yet provided; CA has indicated that a report in this area will be provided during summer 2009.</p>
<p><u>Mental Health Goal 3, Outcome 3- Mental health services within 30 days of the completion of an assessment</u></p> <ul style="list-style-type: none"> ○ Child and Family Services Review (CFSR) mental health item- CFSR item #23—examines whether children’s mental health needs were adequately identified and services provided to meet those needs 	<p>Report provided by CA and summarized in this section.</p>
<p><u>Mental Health Goal 3, Outcome 4- Alternative services when children are denied/ found ineligible for mental health or substance abuse services</u></p> <ul style="list-style-type: none"> ○ Information on cases in which children are denied/ found ineligible for services <ul style="list-style-type: none"> ○ For <u>each</u> child denied or found ineligible: <ul style="list-style-type: none"> ▪ Reason the child was found ineligible or services were denied ▪ Type of alternative services provided 	<p>Report provided by CA and summarized in this section.</p>
<p><u>Additional Informational Reports- Mental Health</u> Sharing mental health information</p> <ul style="list-style-type: none"> ○ Percentage of cases in which applicable mental health information is shared with individuals involved in a child’s case (consistent with confidentiality requirements): <ul style="list-style-type: none"> ○ Applicable mental health information includes: the CHET screening report and recommendations from the Shared Planning Meeting, health and education plan in the ISSP, and annual mental health screening and assessment results ○ Individuals involved in a child’s case include: children age 12 and above, caregivers, birth parents/legal guardians, mental health and/or substance abuse providers, tribal representatives (when applicable), and children’s representatives (note: report should provide separate information on each type of individual) 	<p>Report provided by CA and summarized in this section.</p>

Foster Parent Training and Information	
<p><u>Additional Annual Informational Reports- Foster Parent Training and Information</u></p> <ul style="list-style-type: none"> ○ In-service training <ul style="list-style-type: none"> ○ Percentage of licensed caregivers who meet the in-service training requirement at the time of license renewal (36 hours of in-service training for the three-year period or, during the phase-in period for this policy, a pro-rated requirement) ○ Assessment and Development Plans <ul style="list-style-type: none"> ○ Percentage of licensed caregivers receiving annual assessment and development plans 	Reports provided by CA and summarized in this section.
Unsafe and Inappropriate Placement	
<p><u>Unsafe and Inappropriate Placements- Goal 1, Outcome 2- Children will not stay overnight at DSHS offices or in apartments or hotels</u></p> <ul style="list-style-type: none"> ○ Repeated daily stays at DSHS offices (proxy measure)- Number of children experiencing more than two placements within a 48 hour period 	Report provided by CA and summarized in this section.
<p><u>Unsafe and Inappropriate Placements- Goal 2, Outcome 2- Thorough and timely review of DLR/ CPS referrals</u></p> <p>Summary data</p> <ul style="list-style-type: none"> ○ Characteristics of the alleged victimization (e.g., age, gender, perpetrator, type of out-of-home setting) ○ Outcomes of the investigation (e.g., time from referral to completion of investigation, including any removal action) 	Report provided by CA and summarized in this section, except report on timeframes.
Services to Adolescents	
<p><u>Services to Adolescents- Goal 3, Outcome 1- Percentage of children who run from out-of-home care placements</u></p> <ul style="list-style-type: none"> ○ Multiple runaway events- Percentage of children in care who have run away multiple times during the fiscal year, disaggregated by the number of running events 	Report provided by CA and summarized in this section.
<p><u>Services to Adolescents- Goal 3, Outcome 2- Median number of days children are on runaway status</u></p> <ul style="list-style-type: none"> ○ Mean number of days that children are on runaway status 	Report provided by CA and summarized in this section.
<p><u>Additional Annual Informational Reports- Services to Adolescents</u></p> <ul style="list-style-type: none"> ○ Timely school enrollment <ul style="list-style-type: none"> ○ Percentage of children enrolled in school within 3 school days of entry into foster care or a placement change ○ Performance on Washington Assessment of Student Learning (WASL) <ul style="list-style-type: none"> ○ Comparison of WASL scores for youth currently in foster care and other children ○ Grade Level <ul style="list-style-type: none"> ○ Percentage of children at the age-appropriate grade level (note: these data will not be available until the implementation of FamLink) ○ Annual dropout rate <ul style="list-style-type: none"> ○ Annual drop-out rate for high-school-aged youth in out-of-home care for 30 days or more during the reporting year ○ GED <ul style="list-style-type: none"> ○ Percentage of aging-out youth with a GED 	Report on timely school enrollment provided by CA and summarized in this section. Other reports not yet provided; CA has indicated that WASL and drop-out data will be included in WSIPP report to be produced in late summer 2009.

Informational Reports due August 2009

Data for the following informational reports will be obtained through the foster parent survey or FamLink (or, if not available, from a survey of youth). Based on the timeframes in the Revised Implementation Plan, the due date for these reports is August 2009. These reports will be addressed in the Panel's October 2009 Monitoring Report.

- Mental Health
 - Additional informational reports: *Crisis mental health services*- Percentage of foster parents surveyed who report that, if mental health crisis services were needed, they were provided in a timely manner
- Foster Parent Training and Information
 - Outcome 1- Foster parents reporting adequate training
 - Percentage of unlicensed caregivers reporting adequate training for their roles and responsibilities
 - Outcome 2- Foster parents reporting adequate support
 - Percentage of unlicensed caregivers reporting adequate support for their roles and responsibilities
 - Outcome 3- Foster parents reporting adequate information
 - Percentage of unlicensed caregivers reporting adequate provision of information about the needs of children placed with them
- Unsafe and Inappropriate Placements
 - Goal 1, Outcome 3- Sexually aggressive youth
 - Supervision Plans
 - Percentage of supervision plans discussed with caregivers
 - Percentage of supervision plans completed in written format
 - Goal 1, Outcome 4- Physically assaultive/ aggressive youth
 - Supervision Plans
 - Percentage of supervision plans discussed with caregivers
 - Percentage of supervision plans completed in written format
- Services to Adolescents
 - Goal 2, Outcome 3- Multi-disciplinary staffing meeting prior to exit
 - Ansell-Casey Life Skills Assessment (ACLSA)- Percentage of youth (age 15-18) surveyed reporting that they completed an ACLSA
 - Development of Independent Living (IL) Plan- Percentage of youth (age 15-18) surveyed reporting that they were invited to develop an IL plan

SUMMARY OF INFORMATIONAL REPORTS

All informational reports submitted by Children’s Administration to date are summarized on the following pages. Copies of the informational reports are included in the appendices.

PLACEMENT STABILITY- INFORMATIONAL REPORTS

Goal 1, Outcome 1 The average monthly ratio of licensed foster care beds to children in licensed foster care will be at least 2.0.		
Benchmarks	Performance	Current Status and Comments
FY08=1.8 Statewide benchmark must be met, and no region's performance may be more than .2 lower than the statewide benchmark	FY08=2.23	Reached FY08 benchmark Statewide and regional expectations were achieved.
<ul style="list-style-type: none"> • See page 22 for detail related to this outcome • Summary of informational reports is provided below 		

INFORMATIONAL REPORTS ASSOCIATED WITH GOAL 1, OUTCOME 1

Ratio of beds to children by subcategories: Caregivers with preferences/required equipment for specific age groups (infant, child, adolescent)

Summary of informational report is provided below; additional detail can be found in Appendix III.

Duplicated Counts of Bed Capacity in Licensed Foster Homes by Age Group FY08 Bed Ratio by Month and Age Group

End of Month	<2	2-5	6-12	>12
Jul07	3.3	2.5	2.1	1.4
Aug07	3.1	2.4	2.1	1.4
Sep07	2.9	2.4	2.1	1.4
Oct07	2.8	2.5	2.0	1.4
Nov07	2.7	2.5	2.0	1.4
Dec07	2.6	2.5	2.0	1.4
Jan08	5.2	2.3	2.0	1.3
Feb08	5.0	2.3	2.0	1.3
Mar08	4.5	2.3	2.0	1.3
Apr08	4.2	2.3	2.0	1.3
May08	3.8	2.3	2.0	1.3
Jun08	3.8	2.3	2.0	1.3
FY08MoAvg	3.5	2.4	2.0	1.3

Source: Children's Administration Informational Report, December 2008

Panel comments: "Duplicated" bed count refers to the fact that if a home is licensed to serve children in several different age groups, it will be counted multiple times.

As shown in the table, the ratio of licensed foster home bed capacity is highest for children under age 2 (ratio of 3.5 beds for every child in foster care) and declines for older youth, with a ratio of 1.3 beds for every child age 12+ in foster care. In addition, the ratio of beds to children fluctuated significantly for the under 2 age group, but was comparatively steady for the other age categories.

Foster home retention: Percentage of foster homes remaining active 1, 2, 3, 4 and 5 years after being licensed

Summary of informational report is provided below; additional detail can be found in appendix.

Retention of Active Foster Homes: 1-5 Year Rates

Cohort	1 yr	2yr	3yr	4yr	5yr
FY07	84%	-	-	-	-
FY06	87%	62%	-	-	-
FY05	84%	60%	47%	-	-
FY04	85%	63%	45%	35%	-
FY03	81%	61%	46%	33%	26%

Retention of Licensed Foster Homes: 1-5 Year Rates

Cohort	1 yr	2yr	3yr	4yr	5yr
FY07	97%	-	-	-	-
FY06	97%	84%	-	-	-
FY05	96%	82%	65%	-	-
FY04	96%	80%	65%	37%	-
FY03	96%	81%	65%	34%	31%

Source: Children's Administration Informational Report, December 2008

Panel comments: "Active" foster homes refer to homes that provided care during the time period. Licensed foster homes may not have provided care during the time period.

As shown in shaded sections of the table above:

- One year retention rate: 97% of foster homes licensed in FY07 remained LICENSED one year later, while 84% of these homes remained ACTIVE.
- Two year retention rate: 84% of foster homes licensed in FY06 remained LICENSED two years later, while 62% of these homes remained ACTIVE.
- Three year retention rate: 65% of foster homes licensed in FY05 remained LICENSED three years later, while 47% of these homes remained ACTIVE.
- Four year retention rate: 37% of foster homes licensed in FY04 remained LICENSED four years later, while 35% of these homes remained ACTIVE.
- Five year retention rate: 31% of foster homes licensed in FY03 remained LICENSED five years later, while 26% of these homes remained ACTIVE.

Goal 1, Outcome 2

The percentage of children who experience two or fewer placements during their current out-of-home episode of care will increase (*outcome measure based on percentage of youth entering care during the two previous fiscal years with 2 or fewer placements, with time-in-care specifications based on entry year*).

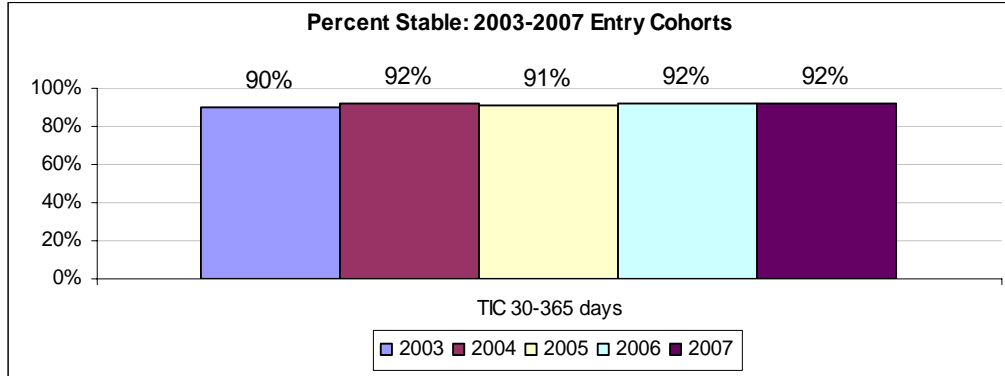
Benchmarks	Performance	Current Status and Comments
FY08=88% Statewide benchmark must be met, and no region’s performance may be more than 10 percentage points lower than the statewide benchmark.	FY08=86.4%	Failed to reach FY08 benchmark: <u>updated compliance plan required</u>
<ul style="list-style-type: none"> • See page 23 for detail related to this outcome • Summary of informational reports is provided below 		

INFORMATIONAL REPORTS ASSOCIATED WITH GOAL 1, OUTCOME 2

Two or fewer placements- expanded report based on outcome: Year-by-year data showing the percentage of youth entering care during the previous five fiscal years who experience two or fewer placements during their current episode of out-of-home care (with time in care specifications based on entry year).

Summary of informational report is provided below; additional detail can be found in Appendix III.

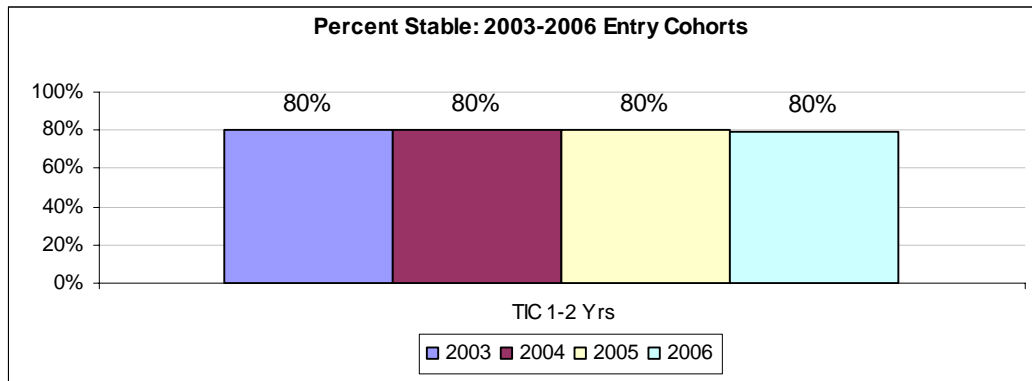
Children in Care 30-365 days



Source: Children’s Administration Informational Report, December 2008

Panel comments: As shown in the table above, 90-92% of children in care at least 30 days but less than one year were “stable”—for purposes of this analysis, this is defined as having experienced two or fewer placements. There has been relatively little change on this measure for the 2003- 2007 entry cohorts (i.e. children entering care during 2003, 2004, 2005, 2006, 2007).

Children in Care 1- 2 years



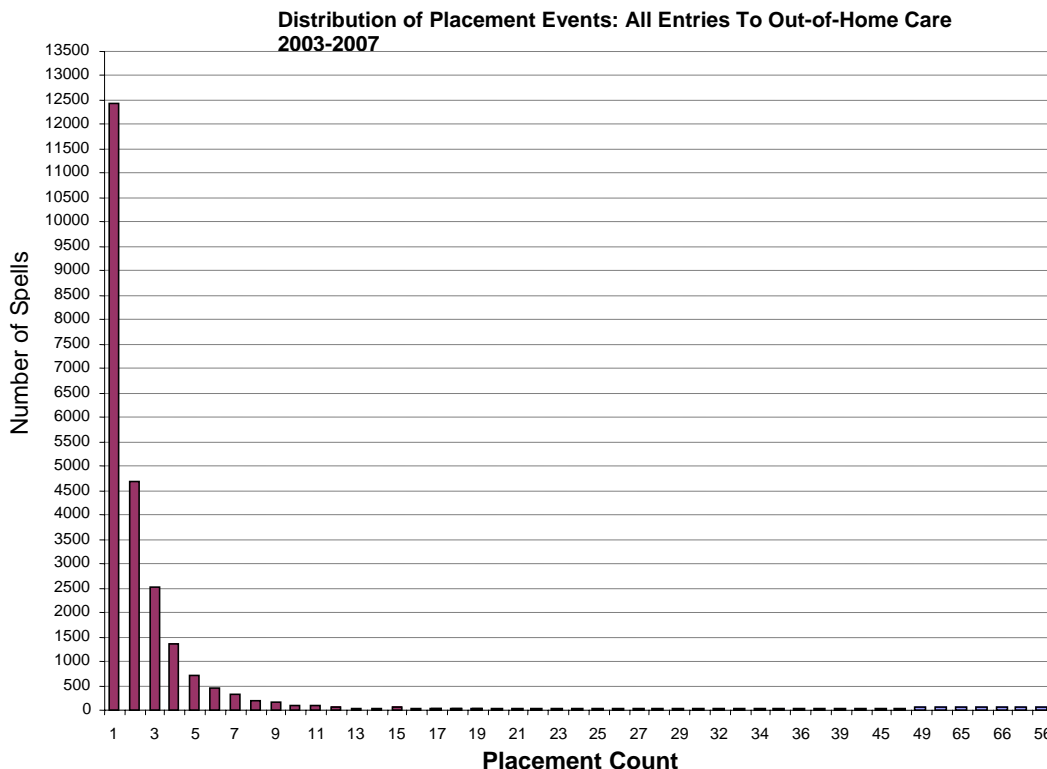
Source: Children's Administration Informational Report, December 2008

Panel comments: As shown in the table above, 80% of children in care for one to two years have two or fewer placements. There has been no change on this measure for children entering care between 2003 and 2006.

Similar analysis of stability for children in care for longer periods of time can be found in Appendix III. As would be expected, these data show that the proportion of children with two or fewer placements declines when examining groups of children who have been in care for longer periods of time. For example, 24% of children in care for more than 5 years experience two or fewer placements.

Multiple placements- Frequency report showing the number of children experiencing multiple placements, by number of placements.

Summary of informational report is provided below; additional detail can be found in Appendix III.



Source: Children's Administration Informational Report, December 2008

Panel comments: This report examines the number of spells (i.e. the number of times a child entered foster care) and the number of placement events for each of these spells. If a child experienced multiple separate episodes in foster care, these episodes would be counted as separate spells. Each spell is then analyzed for the number of placements.

There were a total of 23,446 spells, of which 12,433 (53%) involved only one placement (no moves). Another 20% involved two placements (one move), and 10.7% involved three placements (2 moves). Approximately 2.2% of these spells (530) involved more than 10 placements.

Goal 1, Outcome 3

Social workers will have caseloads at or below Council on Accreditation (COA) standards (18 child cases per caseworker for all other children) (*outcome measure based on the percentage of caseworkers with caseloads at or below COA standards*).²¹

Benchmarks	Performance	Current Status and Comments
FY08=80% Statewide benchmark must be met, and no region's performance may be more than 10 percentage points lower than the statewide benchmark.	FY08=49.9%	Failed to reach FY08 benchmark: <u>compliance plan required</u>
<ul style="list-style-type: none">• See page 24 for detail related to this outcome• Summary of informational reports is provided below		

INFORMATIONAL REPORTS ASSOCIATED WITH GOAL 1, OUTCOME 3

Caseload size by office- Percentage caseworkers with caseloads at or below Council on Accreditation (COA) standards

Children's Administration has provided this informational report on a monthly basis since September 2008. A sample of this report can be found in Appendix III.

Panel comments: These data suggest that the percentage of caseworkers with caseloads at or below COA standards varies across offices. For example, in December 2008, CA provided caseload data for 52 offices. Of these offices, 100% of caseworkers had caseloads at or below COA standards in 8 offices, while 40% or fewer caseworkers had caseloads meeting these standards in 10 offices.

²¹ The Revised Implementation Plan's language for this outcome refers to a separate caseload standard and weighting formula for special needs children. As discussed at the December 2008 Braam Panel meeting, the Panel has now eliminated this requirement.

ADDITIONAL INFORMATIONAL REPORTS ASSOCIATED WITH PLACEMENT STABILITY

Matching between a child's needs and the capacity of the placement to meet those needs

- Percentage of children placed in relative placements
- Percentage of children placed in foster homes licensed for the age of the child placed
- Percentage of children for whom Family Team Decision Meeting (FTDM) was held within 72 hours of placement
- Percentage of children who change placements within the first 8 days of entry into out-of-home care

Summary of informational reports provided below; additional detail can be found in Appendix III.

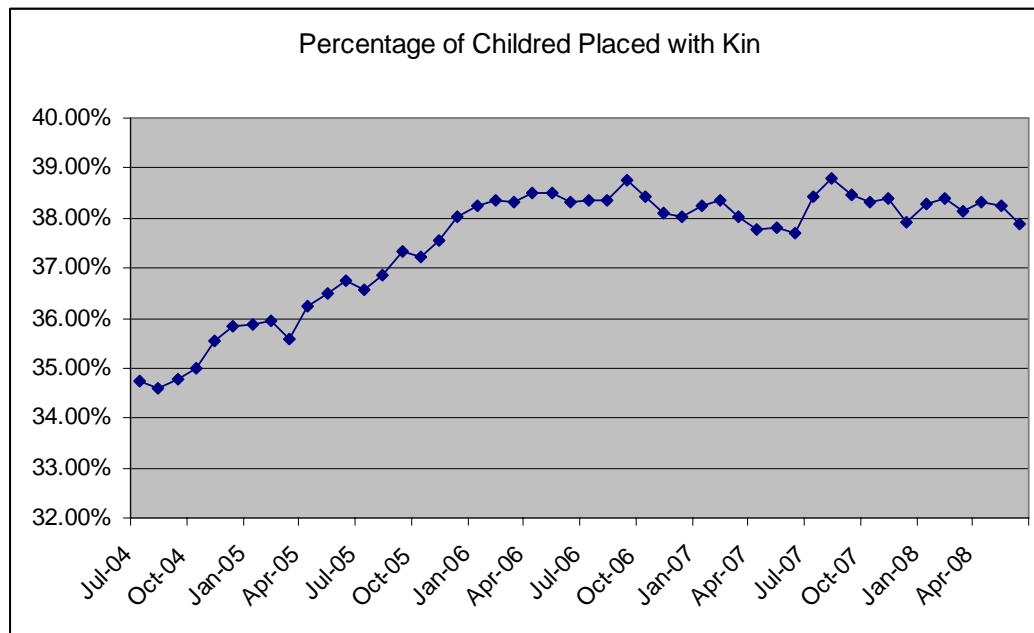
Percentage of children placed in relative placements

Relative Placement by Region, July 2008

		REGION						
RELATIVE PLACEMENT	Data	1	2	3	4	5	6	Grand Total
Yes	Children Count	674	444	795	778	676	563	3930
	%	39.0%	37.8%	41.2%	39.9%	40.6%	30.3%	38.1%
No	Children Count	1054	730	1134	1174	990	1293	6375
	%	61.0%	62.2%	58.8%	60.1%	59.4%	69.7%	61.9%
Total Children Count		1728	1174	1929	1952	1666	1856	10305
Total %		100.0%	100.0%	100.0%	100.0%	100.0%	100.0%	100.0%

Source: Children's Administration Informational Report, March 2009

Relative Placement, 2004- 2008



Based on Children's Administration Informational Report, December 2008

Panel comments: As shown in the charts above, the percentage of children placed with kin increased from 2004 to 2006, and has since leveled off. As of July 2008, 38.1% of children in out-of-home care were placed with relatives. This figure ranged from 30% in region 6 to 41% in region 3.

Percentage of children placed in foster homes licensed for the age of the child placed

Percentage of Children Placed in Foster Homes Licensed for the Age of the Child, by Age Group Categories and by Region

Child Age Group	Reg 1	Reg 2	Reg 3	Reg 4	Reg 5	Reg 6	Grand Total
Age <1 Year	97.0%	93.6%	96.6%	99.3%	98.2%	98.3%	97.3%
Age 2 to 5 Years	97.1%	98.6%	99.2%	97.8%	99.1%	96.3%	97.9%
Age 6 to 12 Years	98.4%	96.5%	97.0%	98.5%	98.6%	97.2%	97.7%
Age 13 to 18 Years	96.8%	96.2%	99.0%	97.8%	100.0%	98.9%	98.2%

Source: Children's Administration Informational Report, March 2009

Panel comments: As shown in the chart above, 97-98% of children are placed in homes that are licensed to serve their age group.

Percentage of children for whom Family Team Decision Meeting (FTDM) was held within 72 hours of placement

Children Receiving FTDM, based on FTDM database maintained at original pilot sites

FTDM Reason	Data Description	STATE Total
Emergency Placement	# Children Eligible	1,062
	# Children Receiving FTDM	398
	% of Children Who Received a FTDM	37.5%

Source: Children's Administration Informational Report, March 2009

Panel comments: As shown in the chart above, Family Team Decision Meetings were held for 37.5% of eligible children placed at FTDM pilot sites.

Percentage of children who change placements within the first 8 days of entry into out-of-home care

Days From Removal to First Move (2nd placement): Placements beginning FY2008

Region	Data	DaysToMove				Grand Total
		0-8	9-30	>30	no move	
1	count	294	105	142	1040	1581
	percent	18.6%	6.6%	9.0%	65.8%	100.0%
2	count	178	56	100	738	1072
	percent	16.6%	5.2%	9.3%	68.8%	100.0%
3	count	229	84	104	790	1207
	percent	19.0%	7.0%	8.6%	65.5%	100.0%
4	count	188	106	139	674	1107
	percent	17.0%	9.6%	12.6%	60.9%	100.0%
5	count	199	115	209	931	1454
	percent	13.7%	7.9%	14.4%	64.0%	100.0%
6	count	287	91	161	1123	1662
	percent	17.3%	5.5%	9.7%	67.6%	100.0%
Total count		1375	557	855	5296	8083
Total percent		17.0%	6.9%	10.6%	65.5%	100.0%

Source: Children's Administration Informational Report, March 2009

Panel comments: As shown in the chart above, for all placements beginning in FY08, 17.0% changed placement locations within 8 days of having entered care; 6.9% changed placements 9-30 days after having entered care; 10.6% changed placements more than 30 days after having entered care; and 65.5% remained in their first placement (i.e. did not experience a placement change).

MENTAL HEALTH- INFORMATIONAL REPORTS

<p><u>Goal 1, Outcome 2</u> Children in out-of-home care 30 days or longer will have completed and documented²² Child Health and Education Track (CHET) screens within 30 days of entering care.</p>		
Benchmarks	Performance	Current Status and Comments
<p>FY08=70% Statewide benchmark must be met, and no region's performance may be more than 10 percentage points lower than the statewide benchmark.</p>	<p>Acceptable data not available²³</p>	<p><u>Failed to reach FY08 benchmark: updated compliance plan required</u></p> <p>Panel has determined that benchmark has not been reached based on failure to provide data.</p>
<ul style="list-style-type: none"> • See page 25 for detail related to this outcome • Summary of informational reports is provided below 		

INFORMATIONAL REPORTS ASSOCIATED WITH GOAL 1, OUTCOME 2

Summary of informational report is provided below; additional detail can be found in Appendix III.

For the individual CHET domains below (education, developmental screen, etc), the data shown reflect receipt dates recorded in CAMIS; they may not indicate that all required elements of the domain were completed.

Percentage of children with completed CHET screens within 45 and 60 days of entry into care

FY08 CHET Screenings

Cumulative Completion	
%	TimeFrame
63.3%	30 days
79.0%	45 days
84.5%	60 days
88.8%	90 days
92.4%	Ever

Source: Children's Administration Informational Report, December 2008

Panel comments: As shown in this chart, although the Braam requirement is for the CHET to be done with 30 days of a child's entry to care, if a longer time period is examined, CHETs are eventually conducted for over 90% of children.

²² For Braam purposes, a completed and documented CHET is one in which age-appropriate screenings have been completed for all domains: Medical (EPSDT completed for all children); Developmental (developmental screening completed for children ages 0-60 months); Emotional-behavioral (screening completed for children ages 6-18 years); Educational (educational records received for school-aged children); and Connections (for all children).

²³ Data provided by the Department do not meet Panel's definition of a complete CHET. Panel has determined that benchmark has not been reached based on lack of availability of appropriate data. Panel also notes that related data suggest that performance continues to fall short of benchmark. The Department is in the process of re-building a data management tool to allow tracking based on the Panel's requirements. Data concerning this measure will be reported in future monitoring reports.

Developmental screening- Percentage of children ages 0-60 months with completed developmental screens within 30, 45 and 60 days of entry into care

FY08 CHET—Developmental Screenings

Cumulative Completion	
%	TimeFrame
55.3%	30 days
61.2%	45 days
63.4%	60 days
64.3%	Ever

Source: Children’s Administration Informational Report, December 2008

Panel comments: As shown in this chart, developmental screens (required for children age 0-5) are conducted within 30 days 55% of the time, and within 60 days 63% of the time.

Emotional/ behavioral screening- Percentage of children ages 6-18 years with completed Child Behavior Checklists within 30, 45 and 60 days of entry into care

FY08 CHET—Emotional/ Behavioral Screenings

Cumulative Completion	
%	TimeFrame
51.3%	30 days
55.5%	45 days
57.6%	60 days
58.9%	90 days
60.4%	Ever

Source: Children’s Administration Informational Report, December 2008

Panel comments: As shown in this chart, emotional/ behavioral health screens (required for children age 6-18) were conducted within 30 days 51% of the time, and within 60 days 57% of the time, and within 90 days 58.9% of the time.

Educational records - Percentage of school-aged children for whom educational records are received within 30, 45 and 60 days of entry into care

FY08 CHET—Educational Records

Cumulative Completion	
%	TimeFrame
37.4%	30 days
41.5%	45 days
43.6%	60 days
44.9%	90 days
46.3%	Ever

Source: Children’s Administration Informational Report, December 2008

Panel comments: As shown in this chart, for school-aged children, educational records are received within 30 days 37% of the time, within 60 days 44% of the time, and within 90 days 45% of the time. These are much lower rates than for other domains.

Goal 3, Outcome 3

Eligible children will receive services from a qualified mental health and/or substance abuse provider within 30 days of the completion of an assessment.

Benchmarks	Performance	Current Status and Comments
FY08=85% Statewide benchmark must be met, and no region's performance may be more than 10 percentage points lower than the statewide benchmark.	FY08= 93.4%	Reached FY08 benchmark Statewide and regional expectations were achieved.
<ul style="list-style-type: none"> • See page 30 for detail related to this outcome • Summary of informational reports is provided below 		

INFORMATIONAL REPORTS ASSOCIATED WITH GOAL 3, OUTCOME 3

Child and Family Services Review (CFSR) mental health item:

- CFSR item #23—examines whether children's mental health needs were adequately identified and services provided to meet those needs

Children's Administration submitted the following information:

This measure is taken from a compilation of all case reviews conducted by the Central Case Review Team. In 2008, the Team reviewed 675 cases from 32 offices. The Team reviews cases of both children residing with their birth families and those residing in out-of-home care. The following are the 2008 results of that measure:

CFSR Item	Outcome	2008 State Results	Region 1	Region 2	Region 3	Region 4	Region 5	Region 6
#23	Mental Health of child	81%	83%	77%	73%	84%	71%	85%

Of the total review, there were 340 cases reviewed in which the children resided in out-of-home care. Compliance for those cases was 82%.

Goal 3, Outcome 4

A shared planning meeting will be held by DCFS to develop an appropriate alternative services plan when a child is found ineligible for or denied mental health treatment or substance abuse assessments or treatment services.

Note: For the purposes of this Monitoring Report, a review of the 48 cases in 2008²⁴ in which children were denied or found ineligible for services. Compliance was not based on whether a shared planning meeting was held, as stated in the outcome, but on whether the child's needs were found to have been met. Panel will work with parties on a revised approach to this outcome for future monitoring reports.

Benchmarks	Performance	Current Status and Comments
FY08=80% Statewide benchmark must be met, and no region's performance may be more than 10 percentage points lower than the statewide benchmark.	FY08= 91.7%	Reached FY08 benchmark
<ul style="list-style-type: none"> • See page 31 for detail related to this outcome • Summary of informational reports is provided below 		

INFORMATIONAL REPORTS ASSOCIATED WITH GOAL 3, OUTCOME 4

Information on cases in which children are denied/ found ineligible for services

- For each child denied or found ineligible:
 - Reason the child was found ineligible or services were denied
 - Type of alternative services provided

Children's Administration provided a summary of this information in a letter based on a review of the situations of children who had been referred to RSNs for mental health services and had been found ineligible for these services between January and November 2008. This review is summarized in the table below.

Outcome for Youth	Totals
CA agreed youth did not have a mental health issue and no services were needed	13
CA believed the youth required counseling or other evaluation services, which were provided	14
CA felt youth did have a mental health issue and there was a reapplication for services, which were provided or is in process	5
Youth moved and needs are met in new location.	4
Youth placed in BRS.	3
Child moved out of service area	3
Youth refused services	2
Services not being provided and there is a need. Department is exploring options.	1
No response yet from worker	3
Total	48

²⁴ One additional case was also found ineligible for services, but could not be reviewed due to confidentiality issues. It is not counted in this analysis.

Additional Informational Reports- Mental Health

Sharing mental health information

- Percentage of cases in which applicable mental health information is shared with individuals involved in a child’s case (consistent with confidentiality requirements):
 - Applicable mental health information includes: the CHET screening report and recommendations from the Shared Planning Meeting, health and education plan in the ISSP, and annual mental health screening and assessment results
 - Individuals involved in a child’s case include: children age 12 and above, caregivers, birth parents/legal guardians, mental health and/or substance abuse providers, tribal representatives (when applicable), and children’s representatives (*note: report should provide separate information on each type of individual*)

Children’s Administration has provided informational reports in its case review report on mental health goal 2, outcomes 1 & 2, related to health and education plans in the ISSP.

Summary of these reports is provided below. Additional detail can be found in the case review report in Appendix II.

<i>Was the health and education plan discussed or shared with....?</i>	Yes
Current caregivers	58%
Birth parents	51%
Tribal representatives	47%
Child (if 12 or older)	54%
Child’s legal representative (GAL/ CASA or attorney)	28%

Based on CA Case Review Report, January 2009

Panel comments: As shown in the chart above, the child’s health and education plan was not always shared with parties involved in a case. In a majority of cases reviewed, the health and education plan was shared with current caregivers (58%), birth parents (51%) and children (54%). The plan was shared with tribal representatives (47%) and legal representatives (28%) less frequently.

FOSTER PARENT TRAINING AND INFORMATION- INFORMATIONAL REPORTS

Additional Annual Informational Reports- Foster Parent Training and Information

In-service training- Percentage of licensed caregivers who meet the in-service training requirement at the time of license renewal (36 hours of in-service training for the three-year period or, during the phase-in period for this policy, a pro-rated requirement)

Summary of informational reports provided below; additional detail can be found in appendix III.

Inservice Training For Foster Homes Renewed During FY08

		Region						
Compliant	Data	1	2	3	4	5	6	Grand Total
Yes	count	65	30	32	30	33	51	241
	percent	47.8%	30.3%	33.0%	25.0%	27.5%	44.0%	35.0%
No	count	71	69	65	90	87	65	447
	percent	52.2%	69.7%	67.0%	75.0%	72.5%	56.0%	65.0%
Total count		136	99	97	120	120	116	688
Total percent		100.0%	100.0%	100.0%	100.0%	100.0%	100.0%	100.0%

Source: Children's Administration Informational Report, March 2009

Panel comments: The chart above examines whether foster homes whose licenses were renewed during FY08 were compliant with CA's in-service training requirement (36 hours of training for the three-year licensure period, or, during the phase-in period for this policy, a pro-rated requirement). As shown in the table, 35.0% of foster homes whose licenses were renewed were compliant with this policy. This figure ranged from 25% in Region 4 to 48% in Region 1.

Assessment and Development Plans- Percentage of licensed caregivers receiving annual assessment and development plans

Summary of informational reports provided below; additional detail can be found in Appendix III.

	Region 1	Region 2	Region 3	Region 4	Region 5	Region 6	State
Total # sent	517	278	367	284	255	829	2530
Total # returned	140	88	69	65	97	190	649
Total # excluded	0	0	0	0	6	7	13
Return Rate	27.1%	31.7%	18.8%	22.9%	39.0%	23.1%	25.8%

Source: Children's Administration Informational Report, March 2009

Panel comments: As shown in the chart above, assessment and development plans were sent to 2530 foster homes across the state. Of these, 649 (25.8%) were returned to CA. Homes shown as "excluded" are those in the process of closure or license revocation.

UNSAFE AND INAPPROPRIATE PLACEMENTS- INFORMATIONAL REPORTS

Goal 1, Outcome 2

Children will not stay overnight at DSHS offices or in apartments or hotels *unless*:

- An appropriate licensed foster family or relative caregiver is not available, administrative approval has been granted, and adequate supervision is provided for the child as required in the Department’s November 2004 memo to CA staff, or
- The youth has an Independent Living Plan authorizing such placement.

Benchmarks	Performance	Current Status and Comments
<p>FY08=0</p>	<p>FY08= 0</p> <p><i><u>Note: Department submitted materials indicating that 3 placements of this type were made and met appropriate exceptions. All placements were in hotels and supervised by staff. These exceptions have been reviewed and deemed acceptable by the Panel.</u></i></p>	<p>Reached FY08 benchmark</p>
<ul style="list-style-type: none"> See page 35 for detail related to this outcome Summary of informational reports is provided below 		

INFORMATIONAL REPORTS ASSOCIATED WITH GOAL 1, OUTCOME 2

Repeated daily stays at DSHS offices (proxy measure)- Number of children experiencing more than two placements within a 48 hour period

Children’s Administration provided data on youth who experienced 2 placements on the same day followed immediately by at least one placement the next day. Six youth showed this placement pattern. All of these youth were age 14-18 and had a history of runaway episodes and/or higher level placements such as BRS or CRC. Additional detail can be found in Appendix III.

Goal 2, Outcome 2

All referrals alleging child abuse and neglect of children in out-of-home care will receive thorough investigation by the Division of Licensing Resources (DLR) pursuant to CA policy and timeline and with required documentation.

Benchmarks	Performance	Current Status and Comments
FY08=100%	FY08= 90.9% ²⁵	Failed to reach FY08 benchmark: <u>updated compliance plan required</u>
<ul style="list-style-type: none"> • See page 39 for detail related to this outcome • Summary of informational reports is provided below 		

INFORMATIONAL REPORTS ASSOCIATED WITH GOAL 2, OUTCOME 2

Summary data

- Characteristics of the alleged victimization (e.g., age, gender, perpetrator, type of out-of-home setting)
- Outcomes of the investigation (e.g., time from referral to completion of investigation, including any removal action)

Summary of informational report is provided below; additional detail can be found in Appendix III.

Findings for DLR Investigations Completed During FY08 With Foster Parents or Staff as Subjects

FINDING		Grand Total
(1) Founded	Count Percent	69 9.0%
(2) Inconclusive	Count Percent	108 14.2%
(3) Unfounded	Count Percent	586 76.8%
Total count		763
Total percent		100.0%

Source: Children's Administration Informational Report, March 2009

Panel comments: As shown in the table above, of the 763 DLR investigations completed during FY08 with foster parents or licensed facility staff as subjects, 9% (69) were founded, 108 (14%) were inconclusive, and 77% (586) were unfounded.

Location of Victims in DLR Investigations Completed During FY08 With Foster Parents or Staff as Subjects (may be duplicated by Region and placement location at time of report)

Placement type	Count	Percent
Licensed FH	597	79.7%
Group Home	52	6.9%
Relative/Parent	42	5.6%
Other Type	58	7.7%
Total	749	100%

Source: Children's Administration Informational Report, March 2009

²⁵ Data reported here are based on a case review that examines the *thoroughness* of DLR/ CPS investigations, but does not address whether the investigation took place within CA policy timelines (as stated in the outcome). Panel is working with parties to develop a means of incorporating data related to timeliness into compliance reporting for this outcome; however, this issue remains unresolved. In any event, performance on this outcome falls short of the benchmark and an updated compliance plan is required.

Panel comments: As shown in the table above, most of 763 DLR investigations completed during FY08 with foster parents or licensed facility staff as subjects related to children placed in foster homes (79.7%). For an additional 6.9% of these investigations, the alleged victim was placed in a group home, 5.6% with a relative or parent, and 7.7% in another placement type.

SERVICES TO ADOLESCENTS- INFORMATIONAL REPORTS

Goal 3, Outcome 1

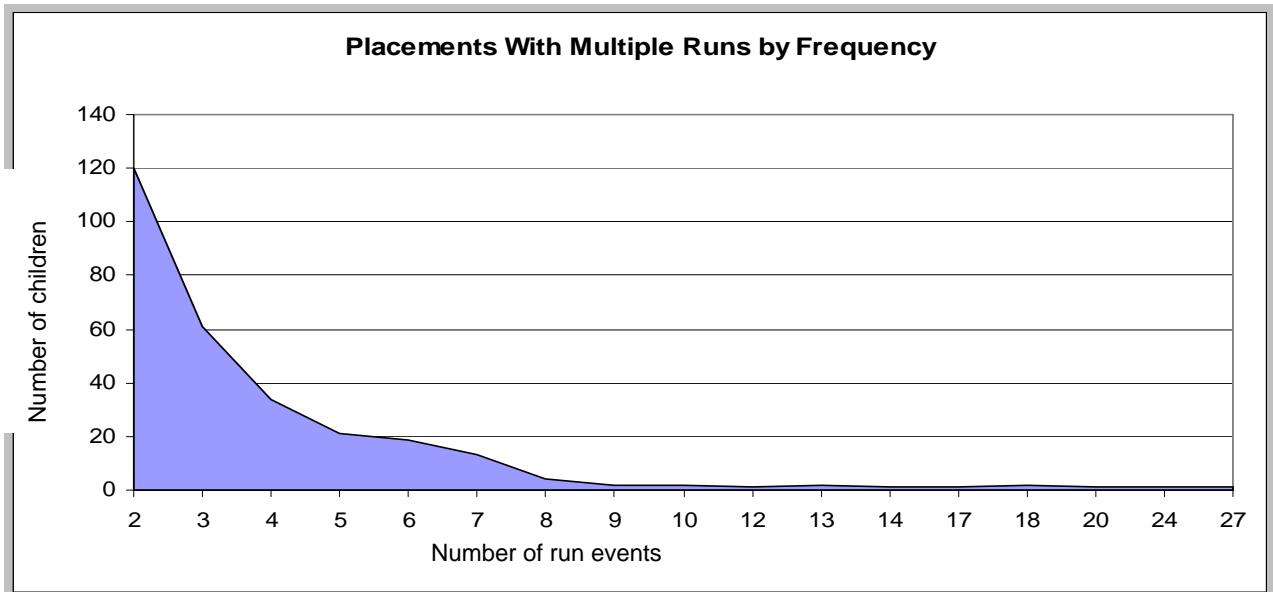
The percentage of children who run from out-of-home care placements during the fiscal year will decrease.

Benchmarks	Performance	Current Status and Comments
FY08=3.0% Statewide benchmark must be met, and no region's performance may be more than .5 percentage points higher than the statewide benchmark.	FY08= 3.6%	Failed to reach FY08 benchmark: <u>updated compliance plan required</u>
<ul style="list-style-type: none"> • See page 45 for detail related to this outcome • Summary of informational reports is provided below 		

INFORMATIONAL REPORTS ASSOCIATED WITH GOAL 3, OUTCOME 1

Multiple runaway events- Percentage of children in care who have run away multiple times during the fiscal year, disaggregated by the number of running events

Summary of informational report is provided below; additional detail can be found in Appendix III. The appendix also explains that the evaluation of running, particularly multiple runs, is complicated by how runs are documented in CAMIS.



Source: Children's Administration Informational Reports, December 2008

Panel comments: As shown in the chart above, numerous children run 2-3 times, and the number of children who run more frequently is relatively small.

Goal 3, Outcome 2

The median number of days that children are on runaway status will decrease.

Benchmarks	Performance	Current Status and Comments
FY08= 35 days Statewide benchmark must be met, and no region's performance may be more than 5 days higher than the statewide benchmark.	FY08= 33 days	Failed to reach FY08 benchmark: updated compliance plan required Statewide benchmark was achieved, but regional requirements were not met. Performance in region 5 was more than 5 days higher than the statewide benchmark. Therefore the overall benchmark has not been reached.
<ul style="list-style-type: none"> • See page 46 for detail related to this outcome • Summary of informational reports is provided below 		

INFORMATIONAL REPORTS ASSOCIATED WITH GOAL 3, OUTCOME 2

Mean number of days that children are on runaway status

Summary of informational report is provided below; additional detail can be found in Appendix III.

Run events beginning during the FY

OnRun during Episode	Data	Region						Grand Total
		1	2	3	4	5	6	
	Children	45	46	60	94	68	90	403
	MEAN RUN DAYS	53.2	74.2	74.0	61.3	81.1	56.1	65.9

Source: Children's Administration Informational Reports, December 2008

Panel comments: As shown in the chart above, the *mean* number of days that children are on runaway status is 65.9. The outcome associated with this report measures the *median* number of days, which for FY08 was 33 days. The large difference between the mean and median suggests that a small number of children must be on a runaway status for a long period of time.

Additional Annual Informational Reports- Services to Adolescents

Timely school enrollment- Percentage of children enrolled in school within 3 school days of entry into foster care or a placement change

Summary of informational report is provided below; additional detail can be found in Appendix III.

**Foster Youth Enrolled in 2006-2007 School Year With Placement Event Dates and Enrollment Dates Between 9/1/2006 and 5/30/2007
Enrollment Date Within 3 Days of Placement Event (Removals and Moves)**

		Timely Enrollment		
Region	Data	Yes	No	Grand Total
1	count	406	49	455
	percent	89.2%	10.8%	100.0%
2	count	191	56	247
	percent	77.3%	22.7%	100.0%
3	count	483	41	524
	percent	92.2%	7.8%	100.0%
4	count	484	72	556
	percent	87.1%	12.9%	100.0%
5	count	287	64	351
	percent	81.8%	18.2%	100.0%
6	count	596	47	643
	percent	92.7%	7.3%	100.0%
Total count		2447	329	2776
Total percent		88.1%	11.9%	100.0%

Source: Children's Administration Informational Report, March 2009

Panel comments: As shown in the chart above, during the 2006-2007 school year, 88% of children were enrolled in school within 3 days of placement in out-of-home care or a move.