



MONITORING REPORT #10

Braam Oversight Panel

March 14, 2011

MONITORING REPORT #10

- Published March 11, 2011
- Based on requirements of Revised Implementation Plan
- Action steps, outcomes, informational reports
- Available at <http://braampanel.org/reports.asp>





BRAAM ACTION STEPS

ACTION STEPS

- Revised Implementation Plan includes 15 action steps that are subject to continued monitoring
 - Status of all action steps is found in appendix to Revised Implementation Plan. 54 action steps had been found complete by the time Imp. Plan was revised (July 2008).
- Monitoring Report #10 assesses performance on these 15 action steps through December 31, 2010
 - Panel reviews progress based on Status Updates provided by the Department.



ACTION STEPS: *SUMMARY OF FINDINGS*

- *Complete- 7 AS*
 - Placement stability
 - AS 1- Plan to reduce caseloads
 - Unsafe & inappropriate placements
 - AS1- Monthly visits
 - AS2- Visits in the first week of out-of-home care
 - Sibling separation
 - AS 1- sibling visits
 - Services to Adolescents
 - AS 2- Educational outreach
 - AS 3- Tutoring and mentoring services
 - AS 5- Documentation of credit accumulation and GPA



ACTION STEPS: *SUMMARY OF FINDINGS*

- *Complete through performance period-*
5 AS
 - Foster Parent Training
 - AS 1- FP survey
 - Mental Health
 - AS 2- CHET QA plan
 - AS 3- Annual review of mental health services
 - Services to Adolescents
 - AS 1- Educational Attainment study
 - AS 6- IL contracts



ACTION STEPS: *SUMMARY OF FINDINGS*

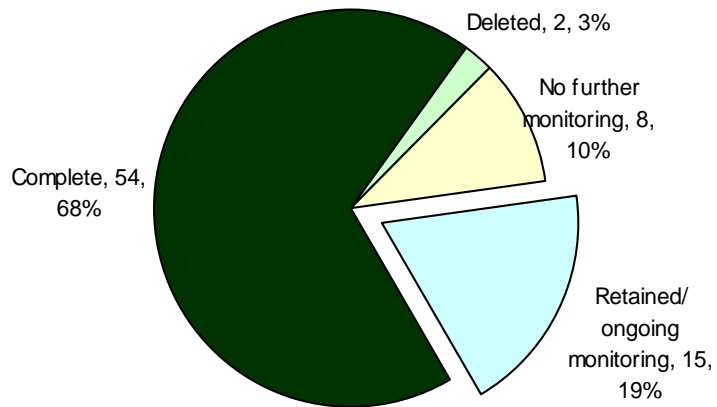
- *Approved compliance plans not complete through period- 2 AS*
 - Services to Adolescents
 - AS 4- Attendance, truancies, suspensions, expulsions
 - AS 7- Juvenile Detention

- *Incomplete- compliance plan required- 1 AS*
 - Mental Health
 - AS 1- Initial health screen

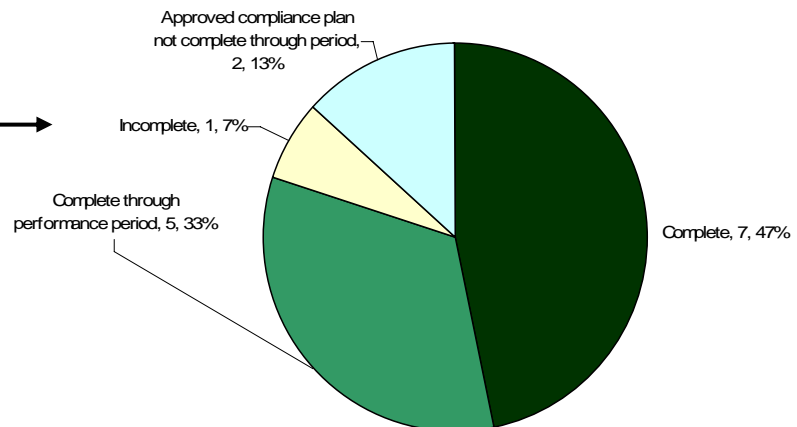


ACTION STEPS

Status of all Action Steps from original Braam Implementation Plan at time of Revised Implementation Plan



Status of 15 Retained Action Steps as of Monitoring Report #10





BRAAM OUTCOMES

OUTCOMES

Monitoring Report #10 assesses performance for all 33 outcomes in Revised Braam Implementation Plan

Data for FY2010 (7/09-6/10) are presented using one of the following data sources for each outcome:

- DSHS Administrative Data
- Case Review Reports
- Foster Parent Survey



OUTCOMES

Multiple ways of looking at performance:


- Performance relative to benchmark
 - Was the 2010 benchmark reached?
 - This is the approach used to assess compliance in Monitoring Report.
 - How close/ far from the benchmark was performance?
- Performance compared to previous year
 - Did performance improve or decline?
 - By how much?



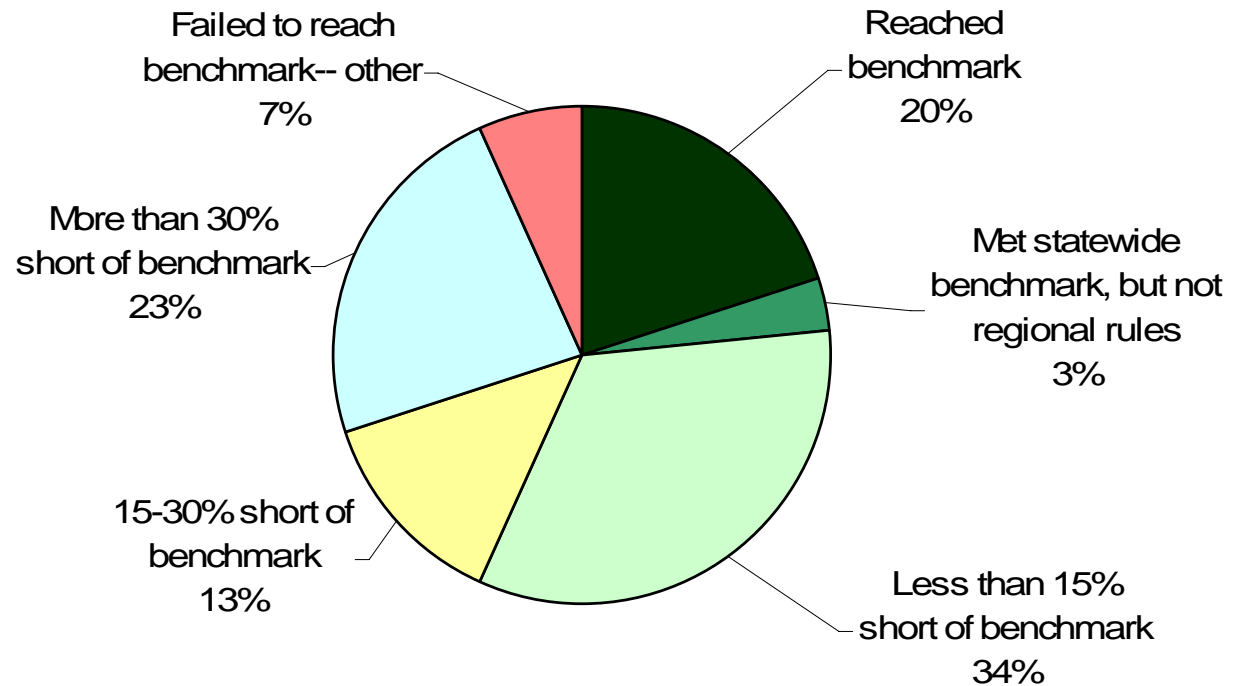
OUTCOMES:

FY 10 PERFORMANCE RELATIVE TO BENCHMARK

Summary

- Reached/ exceeded FY10 benchmark- 6 outcomes
 - Failed to reach FY10 benchmark- 24 outcomes
 - Met statewide benchmark, but not regional rules- 1 outcome
 - Less than 15% short of benchmark- 10 outcomes
 - 15%-30% short of benchmark- 4 outcomes
 - More than 30% short of benchmark- 7 outcomes
 - Other- 2 outcomes
 - Pending– Data will be provided in May 2011- 3 outcomes
- 

OUTCOMES: *FY10 PERFORMANCE RELATIVE TO BENCHMARK*



Total- 33 outcomes



OUTCOMES:

REACHED/ EXCEEDED FY10 BENCHMARK (6)

Outcome	FY10 Benchmark	FY10 Performance	Difference between benchmark and performance	Difference as a % of benchmark
D 1.2- Unsafe Placements (hotels, apartments, offices)	0	0	0	
A 1.1- Bed ratio	2	2.6	60.0%	30.0%
F 2.1- School Moves Required by Placement	20%	17.3%	-2.7%	-13.5%
B 4.1- Continuity of Mental Health Provider	85%	94.5%	9.5%	11.2%
B 3.4 Alternative Services for Mental Health Denials	90%	100%	10.0%	11.1%
D 2.1- Safety in Out-of-Home Care	99.68%	99.80%	0.1%	0.1%



OUTCOMES:

FAILED TO REACH FY10 BENCHMARK

Met statewide benchmark, but not regional rules (1)

[REDACTED]				
F 3.2- Length of time on the run (median days)	25 days	24 days	1	4%

Regional performance ranged from 8 days to 33 days.



OUTCOMES:

FAILED TO REACH FY10 BENCHMARK

Performance was short of benchmark by less than 15% (10)

A 1.2- Placement Stability	90.0%	89.3%	-0.7%	-0.8%
D 1.5- Medically Fragile Children	90.0%	86.3%	-3.7%	-4.1%
B 1.4- Early Intervention Referral	90.0%	86.0%	-4.0%	-4.4%
C 1.1- Adequate Foster Parent Training	90.0%	85.2%	-4.8%	-5.3%
C 1.3- Adequate Foster Parent Information	90.0%	81.8%	-8.2%	-9.1%
D 2.2- Thoroughness & timeliness of DLR-CPS Investigations	100.0%	90.3%	-9.7%	-9.7%
E 1. 2- Placement of Some or All Siblings Together	90.0%	81.2%	-8.8%	-9.8%
B 1.2- CHET	90.0%	78.0%	-12.0%	-13.3%
E 1.1- Placement of All Siblings Together	75.0%	64.5%	-10.5%	-14.0%
C 1.2- Adequate Foster Parent Support	90.0%	76.6%	-13.4%	-14.9%

OUTCOMES: *FAILED TO REACH FY10 BENCHMARK*

Performance was short of benchmark by 15-30% (4)

Outcome	FY10 Benchmark	FY10 Performance	Difference between benchmark and performance	Difference as a % of benchmark
A 1.3- Case Ratio	90%	72.2%	-17.8%	-19.8%
B 2.1- ISSP Completion in 60 Days	90%	71.0%	-19.0%	-21.1%
F 2.2- Foster Youth Graduation Rate	70%	48%	-12.0%	-22.0%
D 1.3- Adequate Safeguards for SAY	95%	70.5%	-24.5%	-25.8%



OUTCOMES: *FAILED TO REACH FY10 BENCHMARK*

Performance was short of benchmark by more than 30% (7)

Outcome	FY10 Benchmark	FY10 Performance	Difference between benchmark and performance	Difference as a % of benchmark
B 2.1- ISSP Every 6 Months	90%	59%	-31%	-34.4%
F 3.1- Frequency of Running from Placement	2.0%	2.7%	0.7%	35.0%
D 1. 4- Adequate Safeguards for PAA Y	95%	57.5%	-37.5%	-39.5%
B 1.3- CHET Shared Planning Meetings	90%	51.9%	-38.1%	-42.3%
E 2.1- Adequate Sibling Contacts and Visits	90%	51.6%	-38.4%	-42.7%
D 1.6- Monthly Social Worker Visits	95%	53.6%	-41.4%	-43.6%
F 2.3- Transition/ Exit Staffings for Youth Age 17.5	95%	27%	-68%	-71.6%

OUTCOMES: *FAILED TO REACH FY10 BENCHMARK*

Other (2)

Outcome	FY10 Benchmark	FY10 Performance
B 1.1- Initial Health Screening	90%	Acceptable data not available
B 3.2- Annual MH Screening	95%	FY10 data will be provided in May 2011. FY10 performance not yet known, but Department has indicated that performance will fall short of benchmark



OUTCOMES: *PENDING*

Data will be provided in May 2011 (3)

Panel will update Monitoring Report at that time

Outcome	FY10 Benchmark	FY10 Performance
B 3.1- Mental Health Assessment w/in 30 days of Request	90%	Not yet available
B 3.3- Mental Health Treatment w/in 30 days of Assessment	95%	Not yet available
D 1.1- Inappropriate Placements (Adult MH facilities)	0 incidents	Not yet available

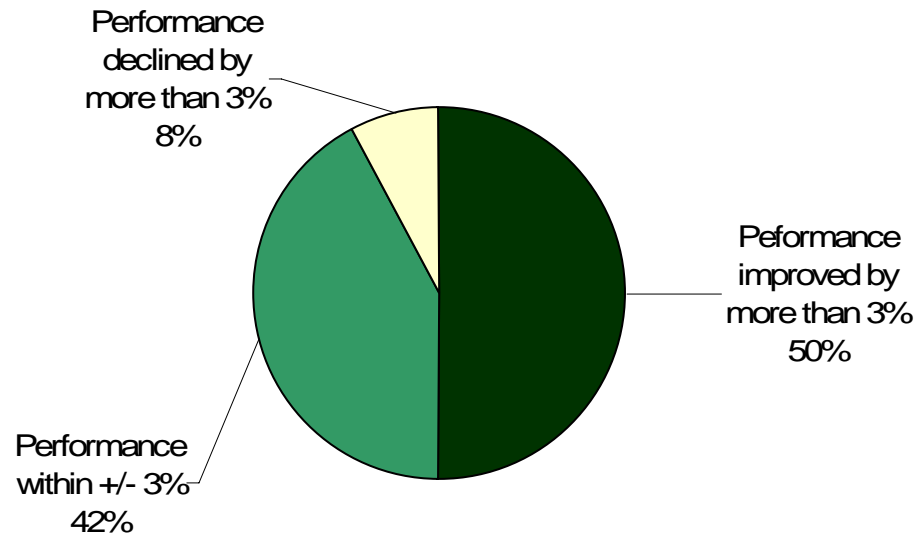


OUTCOMES:

FY10 PERFORMANCE RELATIVE TO PREVIOUS YEAR

Of the outcomes for which Monitoring Report #10 included new data AND data from the year before are available—

(Total= 26 outcomes)



OUTCOMES:

FY 10 PERFORMANCE RELATIVE TO PREVIOUS YEAR

Performance improved by 3% or more (13 outcomes):

- Bed ratio
- Case ratio
- CHET
- Referral to early intervention
- Adequate foster parent support
- Adequate foster parent information
- Adequate safeguards for PAAV
- Monthly social worker visits
- DLR/ CPS investigations
- Placement of all siblings together
- School moves required by placement
- Frequency of running from placement
- Length of time on the run



OUTCOMES:

FY10 PERFORMANCE RELATIVE TO PREVIOUS YEAR

Performance was within +/- 3% (11 outcomes):

- Placement Stability (two or more placements)
- Alternative Services for Mental Health Denials
- Continuity of mental health provider
- Adequate foster parent training
- Unsafe Placements (overnight stays in offices/ hotels)
- Adequate safeguards for SAY
- Adequate training & care for medically fragile children
- Safety in out-of-home care
- Placement of some or all siblings together
- Sibling Visits and Contacts
- HS Graduation



OUTCOMES:

FY 10 PERFORMANCE RELATIVE TO PREVIOUS YEAR

Performance declined by more than 3% (2 outcomes):

- ISSP completion within 60 days
- ISSP updated every 6 months






BRAAM INFORMATIONAL REPORTS

Presented with monitoring report for informational purposes only– these reports are not used to make findings of compliance.

INFORMATIONAL REPORTS

- Annual Informational Reports
 - Required under Revised Braam Implementation Plan-- provide additional description related to Braam outcomes
 - Race/ ethnicity informational reports
 - Will be on agenda for June 2011 Braam Panel public meeting
 - Monthly/ quarterly informational reports
 - Will be presented during afternoon session of March 14, 2011 Braam Panel public meeting
- 

MONTHLY/ QUARTERLY INFORMATIONAL REPORTS

- Data related to 17 outcomes agreed to in August 2010
- More frequent submission of data, rather than waiting for annual performance data
- Informational only- Panel does not use these data to assess compliance



MONTHLY/ QUARTERLY INFORMATIONAL REPORTS

- The following slides revisit the outcomes for which FY10 benchmarks were not reached and provide a summary of monthly/ quarterly informational reports in these areas
- Detailed data will be presented during afternoon session of this meeting



OUTCOMES:

FAILED TO REACH FY10 BENCHMARK

Performance was short of benchmark by less than 15% (10)

Outcome	FY10 Benchmark	FY10 Performance	Does the Panel require monthly/ quarterly data?	Does monthly/ quarterly data show improvement since FY10?
A 1.2- Placement Stability	90.0%	89.3%	YES	YES
D 1.5- Medically Fragile Children	90.0%	86.3%	NO	
B 1.4- Early Intervention Referral	90.0%	86.0%	YES	YES
C 1.1- Adequate Foster Parent Training	90.0%	85.2%	NO	
C 1.3- Adequate Foster Parent Information	90.0%	81.8%	NO	
D 2.2- Thoroughness & timeliness of DLR-CPS Investigations	100.0%	90.3%	YES	ALTERNATIVE MEASURE (not directly comparable)
E 1. 2- Placement of Some or All Siblings Together	90.0%	81.2%	YES	NO- SLIGHT DECLINE
B 1.2- CHET	90.0%	78.0%	YES	YES
E 1.1- Placement of All Siblings Together	75.0%	64.5%	YES	YES
C 1.2- Adequate Foster Parent Support	90.0%	76.6%	YES	Most recent data available are FY10 Q4

OUTCOMES:

FAILED TO REACH FY10 BENCHMARK

Performance was short of benchmark by 15-30% (4)

Outcome	FY10 Benchmark	FY10 Performance	Does the Panel require monthly/quarterly data?	Does monthly/quarterly data show improvement since FY10?
A 1.3- Case Ratio	90%	72.2%	YES	YES
F 2.2- Foster Youth Graduation Rate	60%	48%	NO	
B 2.1- ISSP Completion in 60 Days	90%	71.0%	NO	
D 1.3- Adequate Safeguards for SAY	95%	70.5%	YES	Most recent data available are FY10 Q4



OUTCOMES: *FAILED TO REACH FY10 BENCHMARK*

Performance was short of benchmark by more than 30% (7)

Outcome	FY10 Benchmark	FY10 Performance	Does the Panel require monthly/ quarterly data?	Does monthly/ quarterly data show improvement since FY10?
B 2.1- ISSP Every 6 Months	90%	59%	YES	YES
F 3.1- Frequency of Running from Placement	2.0%	2.7%	YES	ALTERNATIVE MEASURE (not directly comparable)
D 1. 4- Adequate Safeguards for PAAY	95%	57.5%	YES	Most recent data available are FY10 Q4
B 1.3- CHET Shared Planning Meetings	90%	51.9%	YES	YES
E 2.1- Adequate Sibling Contacts and Visits	90%	51.6%	YES	Most recent data available are FY10 Q4
D 1.6- Monthly Social Worker Visits	95%	53.6%	YES	ALTERNATIVE MEASURE (not directly comparable)
F 2.3- Transition/ Exit Staffings for Youth Age 17.5	95%	27%	YES	YES

OUTCOMES:

FAILED TO REACH FY10 BENCHMARK

Other (2)

Outcome	FY10 Benchmark	FY 10 Performance	Does the Panel require monthly/ quarterly data?	Does monthly/ quarterly data show improvement since FY 10?
B 1.1- Initial Health Screening	90%	Acceptable data not available		
B 3.2- Annual MH Screening	95%	FY10 data will be provided in May 2011. FY10 performance not yet known, but Department has indicated that performance will fall short of benchmark	YES	ALTERNATIVE MEASURE (not directly comparable)