

Children's Administration

May 2011

Braam Settlement Agreement
Monthly Informational Performance
Report

May 16, 2011

DSHS Children's Administration, Braam Settlement Agreement, *Monthly* Informational Performance Report

Table of Contents & Overview of Monthly Performance

Monday, May 16, 2011

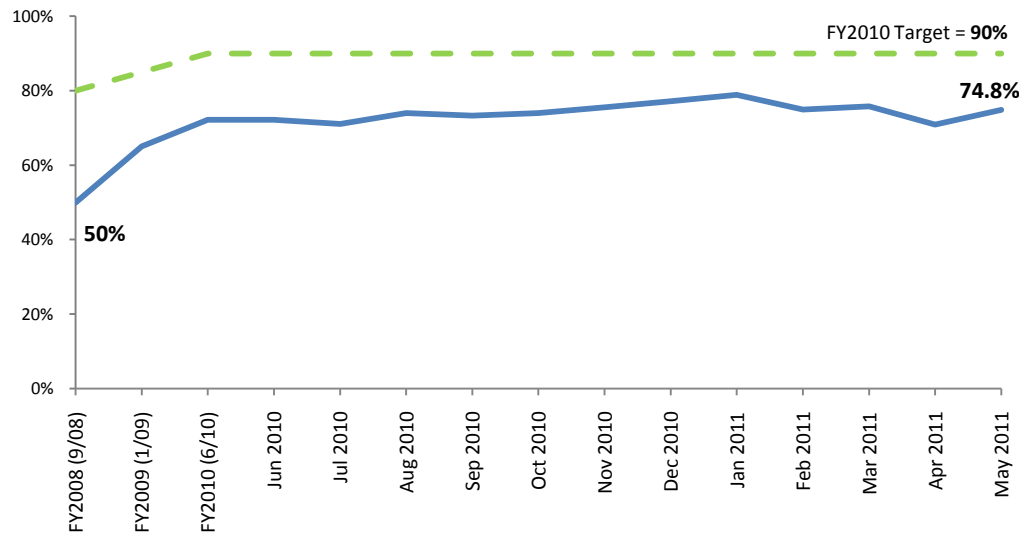
Informational Report	Braam Settlement Agreement Reference	Description	Benchmark	Actual (Monthly*)	Page Number (Quick Links)
Caseload Size	Placement Stability, Goal 1, Outcome 3	Percentage of social workers providing services to one or more children in out of home care under CA Placement and Care Authority with caseloads at or below Council on Accreditation (COA) standards (18 child cases per worker).	90%	74.8%	3
Monthly Visits - Alternative Measure	<i>Alternative Measure:</i> Unsafe and Inappropriate Placements, Goal 1, Outcome 6	Percentage of children that receive a private and individual face-to-face health and safety visit from an assigned caseworker at least once during the calendar month.	95%	96.1%	7
CHET Screenings - Overall Completions	Mental Health, Goal 1, Outcome 2	Percentage of children in out-of-home care 30 days or longer that have a Child Health and Education Tracking (CHET) screen completed and documented within 30 days of entering care.	90%	94.0%	10
CHET Screenings - Physical Health Domain	Mental Health, Goal 1, Outcome 2	Percentage of children with a completed Early Periodic Screening Diagnosis and Treatment (EPSDT) exam within 30 days of entry into care.	90%	95.0%	13
CHET Screenings - Developmental Domain	Mental Health, Goal 1, Outcome 2	Percentage of children ages 0-60 months with a completed developmental screen within 30 days of entry into care.	90%	98.0%	16
CHET Screenings - Educational Domain	Mental Health, Goal 1, Outcome 2	Percentage of school-aged children for whom educational records are received within 30 days of entry into care.	90%	98.0%	19
CHET Screenings - Emotional/ Behavioral Domain	Mental Health, Goal 1, Outcome 2	Percentage of children ages 6-18 years with a completed Pediatric Symptom Checklist (PSC) - 17 and children age 3 months to 5 years of age with a completed ASQ-SE within 30 days of entry into care.	90%	97.0%	22
CHET Screenings - Connections	Mental Health, Goal 1, Outcome 2	Percentage of children with a completed Connections domain within 30 days of entry into care.	90%	97.0%	25
Referral to Early Support for Infant and Toddlers (ESIT) Program within 2 Workdays	Mental Health, Goal 1, Outcome 4	Percentage of children age 3 and under in out-of-home care with identification of concerns about developmental delays from their CHET Screens that are referred to the Early Support for Infant and Toddlers (ESIT) Program within 2 workdays.	90%	95.0%	28
Shared Planning Meeting Focused on CHET within 60 Days of Entry into Care	Mental Health, Goal 1, Outcome 3	Percentage of Shared Planning Meetings (SPM) that include a focus on CHET screening results that are held within 60 days of each child's entry into care.	90%	93.5%	31
Youth Transition (Exit) Staffings	Services to Adolescents, Goal 2, Outcome 3	Percentage of multi-disciplinary staffing meeting that are held at least six months prior to a youth's exit from foster care to address issues related to their transition to independence.	95%	90.0%	34

* Month represented varies according to measure and reflects most recent informational performance data available.

Caseloads At or Below 18 Cases

Social workers will have caseloads at or below Council on Accreditation (COA) standards (18 child cases per worker). (Placement Stability, Goal 1, Outcome 3)

Statewide Performance (Prior Years and Rolling 12 Months)



SUMMARY

- May 2011 data shows approximately 75% of social workers, who served at least one child in out of home care, had caseloads of 18 or fewer.
- Performance shows improvement over time.
- Regional performance varies between a high of 81% in Region 3 to a low of 66% in Region 5.
- The majority of social workers are Child and Family Welfare Services (CFWS) workers. The measure also counts social workers who occasionally serve a child in out of home care (i.e. Child Protective Services, Family Reconciliation Services, and Voluntary Family Services).
- This data does not reflect the new caseload report methodology.
- Caseloads are affected by children entering and leaving out-of-home care. CA has a strong focus on reducing the length of time children and youth spend in out of home care. These efforts achieve safe legal permanency for children and help reduce social worker's caseloads.

ACTION PLAN

- Regional managers actively monitor caseloads and make adjustments when indicated within allocated resources.
- Continue efforts to safely place children in permanent homes, achieve timely permanency, and make court improvements.
- Expand use of family team meetings and Casey Family Program Roundtables to improve practice and better impact timely and safe permanency.
- Continue to review and correct social worker case and child assignment information in FamLink.
- Better engage and support relatives caring for dependent children.

DATA SOURCE: FamLink; supplied by Lee Doran, Lead Analyst, Children's Administration

MEASURE DEFINITION: Percentage of social workers providing services to one or more children in out of home care under CA Placement and Care Authority with caseloads at or below 18 (COA Standards).

DATA NOTES: 1 FY2008 was the first year administrative data was available to report on this outcome. 2 The data is considered estimates as changes over time in counts still represent a developing measure and utilization of the information management system used as the data source. 3 The counts are point in time as of the first day of the report month. Consistent reporting months have not been used due to timing of development and availability of measure data. 9/08 was used for FY2008 as it was the first month performance data for this outcome was available. 1/09 was used for FY2009 as it was the last month CA had confidence in the data prior to the conversion of data to FamLink. 4 FY2010 and FY2011 counts of assignments are not based on strict logic recently developed by CA due to additional time needed to refine the report methodology and strengthen accuracy of child and case assignment documentation in FamLink. 5 Compliance with this outcome requires the statewide benchmark to be met. In addition, no region's performance may be more than 10 percentage points lower than the statewide benchmark.

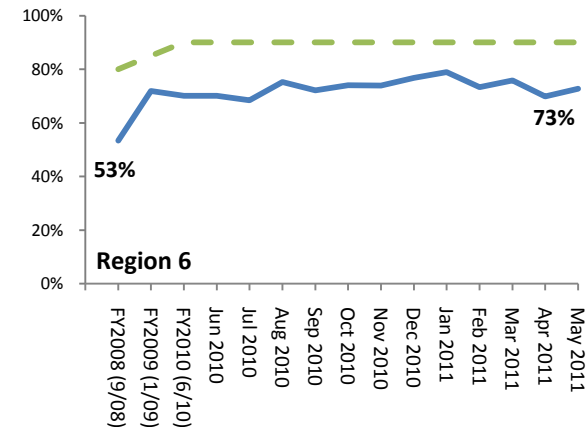
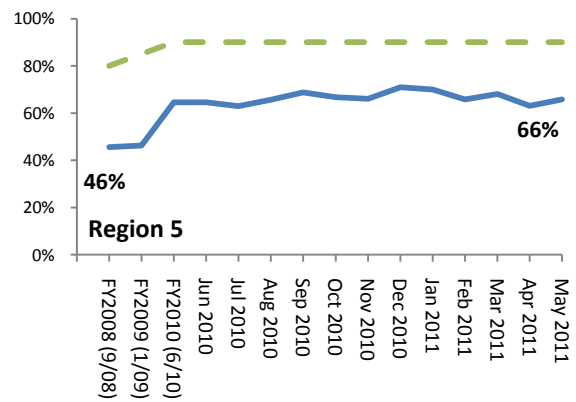
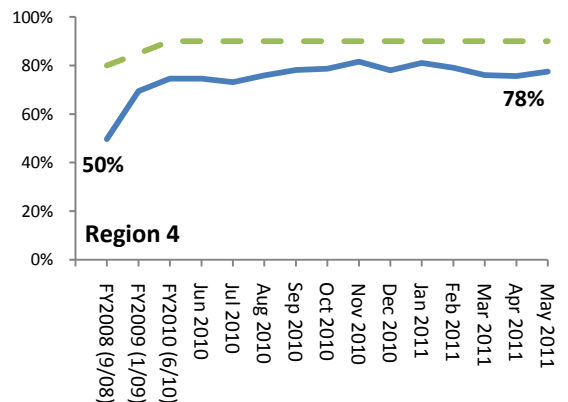
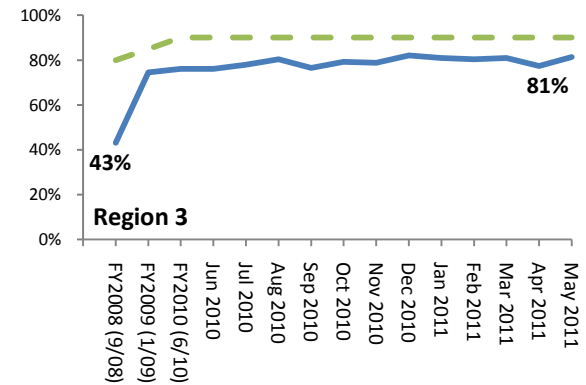
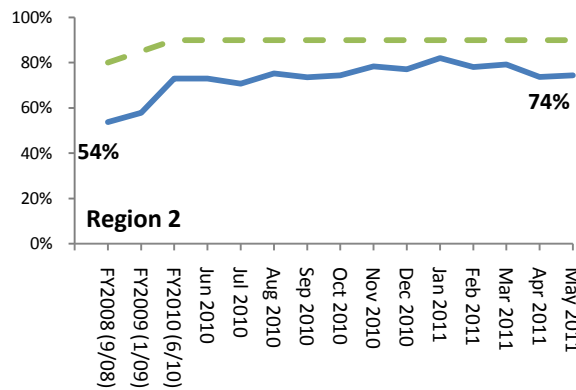
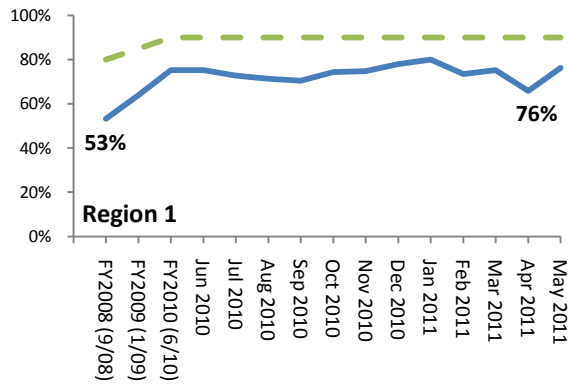
PERFORMANCE MEASURE

[TO DATA TABLE](#)

Caseloads At or Below 18 Cases

Social workers will have caseloads at or below Council on Accreditation (COA) standards (18 child cases per worker). (Placement Stability, Goal 1, Outcome 3)

Regional Trends (Prior Years and Rolling 12 Months)



Children's Administration

Caseloads At or Below 18 Cases (Placement Stability, Goal 1, Outcome 3)

Social workers will have caseloads at or below Council on Accreditation (COA) standards.

Measure definition	Percentage of social workers providing services to one or more children in out of home care under CA Placement and Care Authority with caseloads at or below Council on Accreditation (COA) standards (18 child cases per worker).
Data source	FamLink Run date 5-12-11 as of 5-1-11
Data supplier	Lee Doran, Lead Analyst, Children's Administration
Next update	June 2011
Frequency	Monthly
Data notes	<p>1 FY2008 was the first year administrative data was available to report on this outcome.</p> <p>2 The data is considered estimates as changes over time in counts still represent a developing measure and utilization of the information management system used as the data source.</p> <p>3 The counts are point in time as of the first day of the report month. Consistent reporting months have not been used due to timing of development and availability of measure data. 9/08 was used for FY2008 as it was the first month performance data for this outcome was available. 1/09 was used for FY2009 as it was the last month CA had confidence in the data prior to the conversion of data to FamLink.</p> <p>4 FY2010 and FY2011 counts of assignments are not based on strict logic recently developed by CA due to additional time needed to refine the report methodology and strengthen accuracy of child and case assignment documentation in FamLink.</p> <p>5 Compliance with this outcome requires the statewide benchmark to be met. In addition, no region's performance may be more than 10 percentage points lower than the statewide benchmark.</p>

DATA

DATE	Statewide	TARGET	Worker Count		Region 1	Region 2	Region 3	Region 4	Region 5	Region 6
			<18	>18 Percent Count						
FY2008 (9/08)	49.9%	80%	512	50.1% 514	53%	54%	43%	50%	46%	53%
FY2009 (1/09)	65.0%	85%	652	35.0% 328	64%	58%	75%	70%	46%	72%
FY2010 (6/10)	72.2%	90%	695	27.8% 268	75%	73%	76%	75%	65%	70%
Jun 2010	72.2%	90%	695	27.8% 268	75%	73%	76%	75%	65%	70%
Jul 2010	71.1%	90%	690	28.9% 281	73%	71%	78%	73%	63%	69%
Aug 2010	74.0%	90%	779	26.0% 273	71%	75%	80%	76%	66%	75%
Sep 2010	73.3%	90%	763	26.7% 278	71%	74%	77%	78%	69%	72%
Oct 2010	74.0%	90%	771	26.0% 271	74%	74%	79%	79%	67%	74%
Nov 2010	75.5%	90%	762	24.5% 247	75%	78%	79%	82%	66%	74%
Dec 2010	77.2%	90%	755	22.8% 223	78%	77%	82%	78%	71%	77%
Jan 2011	78.9%	90%	769	21.1% 206	80%	82%	81%	81%	70%	79%
Feb 2011	74.9%	90%	720	25.1% 241	74%	78%	80%	79%	66%	73%
Mar 2011	75.8%	90%	740	24.2% 236	75%	79%	81%	76%	68%	76%
Apr 2011	70.9%	90%	686	29.1% 282	66%	74%	77%	76%	63%	70%
May 2011	74.8%	90%	721	25.2% 243	76%	74%	81%	78%	66%	73%

Children's Administration

Caseloads At or Below 18 Cases

Social workers will have caseloads at or below Council on Accreditation (COA) standards. (Placement Stability, Goal 1, Outcome 3)

Measure definition	Percentage of social workers providing services to one or more children in out of home care under CA Placement and Care Authority with caseloads at or below Council on Accreditation (COA) standards (18 child cases per worker).
Data source	FamLink Run date 5-12-11 as of 5-1-11
Data supplier	Lee Doran, Lead Analyst, Children's Administration
Next update	June 2011
Frequency	Monthly
Data notes	<p>1 FY2008 was the first year administrative data was available to report on this outcome.</p> <p>2 The data is considered estimates as changes over time in counts still represent a developing measure and utilization of the information management system used as the data source.</p> <p>3 The counts are point in time as of the first day of the report month. Consistent reporting months have not been used due to timing of development and availability of measure data. 9/08 was used for FY2008 as it was the first month performance data for this outcome was available. 1/09 was used for FY2009 as it was the last month CA had confidence in the data as it was the last month CA had confidence in the data prior to the conversion of data to FamLink.</p> <p>4 FY2010 and FY2011 counts of assignments are not based on strict logic recently developed by CA due to additional time needed to refine the report methodology and strengthen accuracy of child and case assignment documentation in FamLink.</p> <p>5 Compliance with this outcome requires the statewide benchmark to be met. In addition, no region's performance may be more than 10 percentage points lower than the statewide benchmark.</p>

DATA

Region	Worker Count <18	Worker Count >18	0 - 4 Cases		5 - 10 Cases		11 - 18 Cases		19 - 25 Cases		26 - 35 Cases		>35 Cases	
			Percent	Count	Percent	Count	Percent	Count	Percent	Count	Percent	Count	Percent	Count
Region 1	76.3%	23.8%	8.8%	14	31.9%	51	35.6%	57	8.1%	13	7.5%	12	8.1%	13
Region 2	74.4%	25.6%	11.1%	13	23.9%	28	39.3%	46	17.9%	21	6.0%	7	1.7%	2
Region 3	81.3%	18.7%	6.6%	11	26.5%	44	48.2%	80	6.6%	11	6.6%	11	5.4%	9
Region 4	77.5%	22.5%	10.1%	18	27.0%	48	40.4%	72	7.9%	14	9.0%	16	5.6%	10
Region 5	65.8%	34.2%	5.3%	8	18.4%	28	42.1%	64	14.5%	22	5.9%	9	13.8%	21
Region 6	72.8%	27.2%	11.0%	21	22.0%	42	39.8%	76	7.9%	15	10.5%	20	8.9%	17
State	74.8%	25.2%	8.8%	85	25.0%	241	40.9%	395	10.5%	96	7.6%	75	7.3%	72

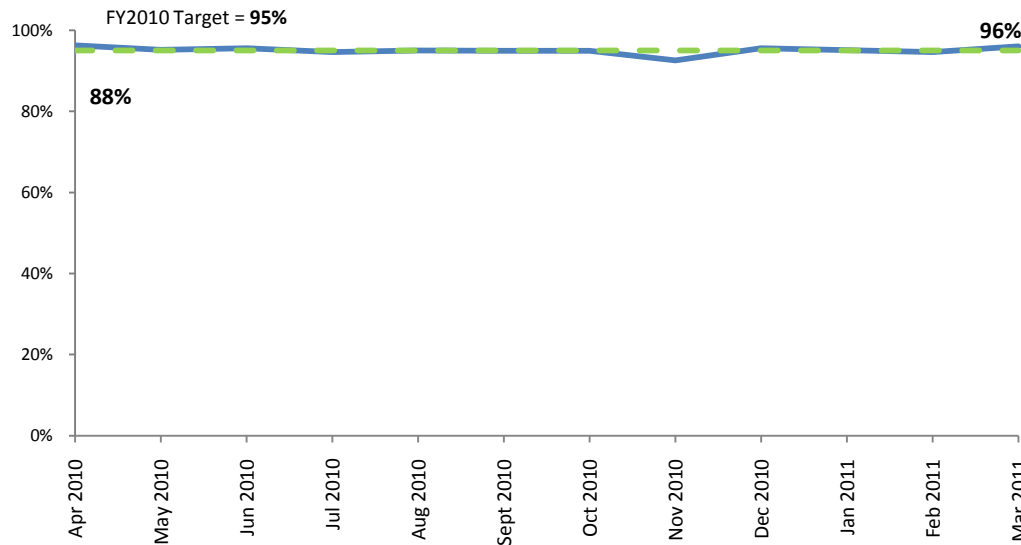
INFORMATIONAL MEASURE

[TO DATA TABLE](#)

Monthly Health and Safety Visits with Children

Children will receive a private and individual face-to-face health and safety visit from an assigned caseworker at least once during the calendar month. (Alternative Measure: Unsafe and Inappropriate Placements, Goal 1, Outcome 6)

Statewide Performance (Rolling 12 Months)



SUMMARY

- Approximately 96% of children placed in out-of-home care were visited by their social worker during March 2011 and met the statewide benchmark.
- Statewide performance in March shows steady improvement since November 2010.
- Recognition to Region 3 for achieving the highest performance in March at 98% and to all regions who met the 95% benchmark.
- Conducting quality monthly visits with children in foster care is a critical component of the child welfare system. Regular visits help engage children and parents in case planning and support their progress toward meeting identified goals.

ACTION PLAN

- Communicate performance monthly and follow up with regions, offices, supervisors, and social workers when visits do not occur.
- Identify and address reasons for visits not occurring.

DATA SOURCE: FamLink; supplied by Lee Doran, Lead Analyst, Children's Administration

MEASURE DEFINITION: Percentage of children in out-of-home placement or an in-home dependency that received an individual face-to-face health and safety visit from their social worker during a single calendar month.

DATA NOTES: **1** Measures the percent of children who were seen by the assigned social worker for a Health and Safety visit during the month for children placed in out-of-home care for the full month (in placement on the 1st day of the month and no discharge during the month). **2** Population includes children in out of home placement under the age of 18 and under CA placement and care authority. **3** In December 2010, a decision was made for performance to include "Visits Conducted by Other Agencies" as compliant as reports to the Governor's office include. A random review indicates the majority are Interstate Compact for Placement of Children (ICPC) cases and visits by CA social workers inaccurately coded. Statewide counts have been updated for all previous report months. Regional performance reflects the change beginning with September-2010 performance data and not for prior months. (See complete Data Notes on page 9)

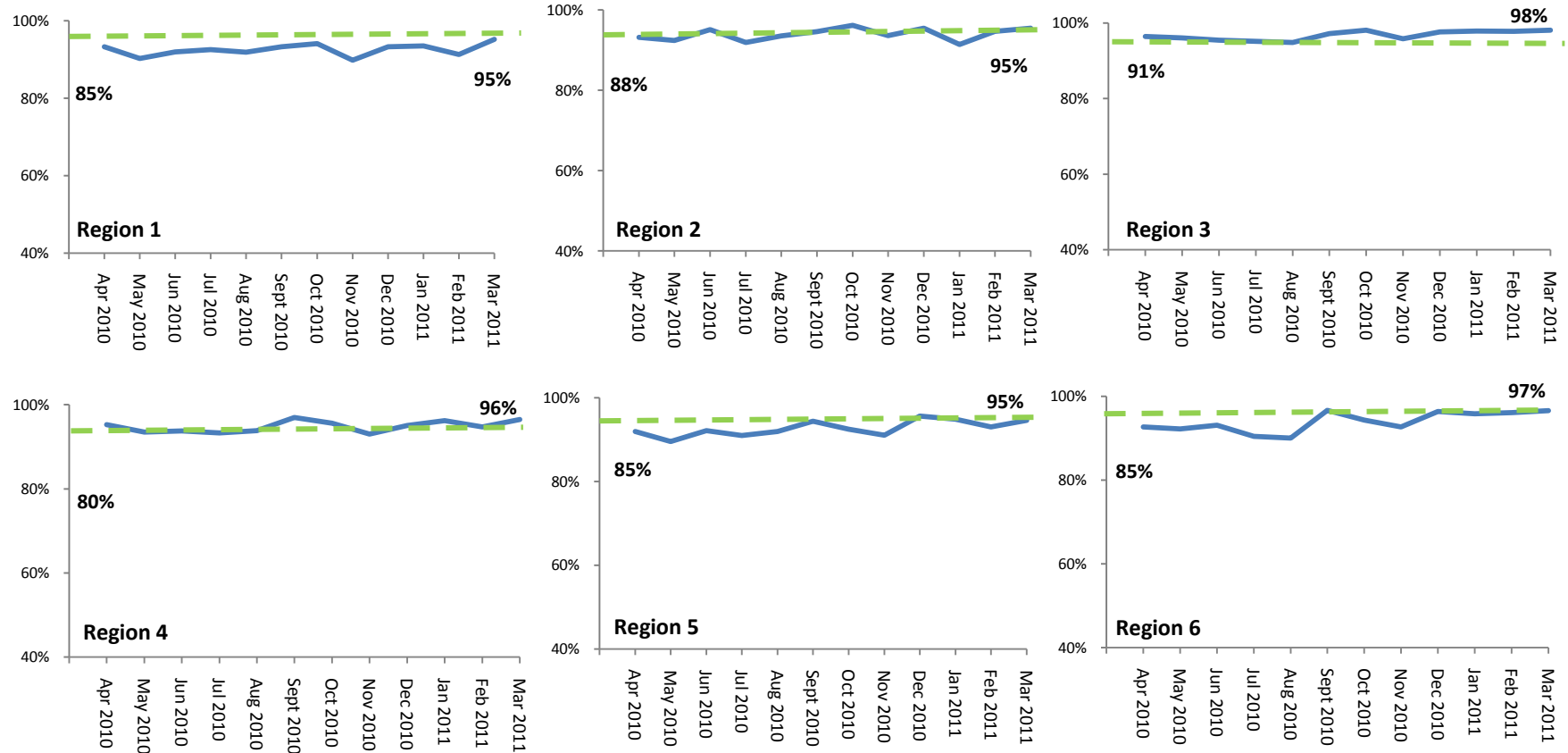
INFORMATIONAL MEASURE

[TO DATA TABLE](#)

Monthly Health and Safety Visits with Children

Children will receive a private and individual face-to-face health and safety visit from an assigned caseworker at least once during the calendar month. (*Alternative Measure: Unsafe and Inappropriate Placements, Goal 1, Outcome 6*)

Regional Trends (Rolling 12 Months)



Children's Administration

Monthly Health and Safety Visits with Children

Children will receive a private and individual face-to-face health and safety visit from an assigned caseworker at least once during the calendar month. (Alternative Measure: Unsafe and Inappropriate Placements, Goal 1, Outcome 6)

Measure definition	Percentage of children in out-of-home placement or an in-home dependency that received an individual face-to-face health and safety visit from their social worker during a single calendar month.
Data source	FamLink Run date 5/12/2011
Data supplier	Lee Doran, Lead Analyst, Children's Administration
Next update	June 2011
Frequency	Monthly
Data notes	<p>1 Measures the percent of children who were seen by the assigned social worker for a Health and Safety visit during the month for children placed in out-of-home care for the full month (in placement on the 1st day of the month and no discharge during the month).</p> <p>2 Population includes children in out of home placement under the age of 18 and under CA placement and care authority.</p> <p>3 In December 2010, a decision was made for performance to include "Visits Conducted by Other Agencies" as compliant as reports to the Governor's office include. A random review indicates the majority are Interstate Compact for Placement of Children (ICPC) cases and visits by CA social workers inaccurately coded. Statewide counts have been updated for all previous report months. Regional performance reflects the change beginning with September-2010 performance data and not for prior months.</p> <p>4 In October 2010, the monthly visits data report was replaced with a new report from the Data Warehouse, which is still being validated. Among other changes, the new report better accounts for dependent children in their homes (trial return home), which adds several hundred more children to the total.</p> <p>5 September 2010 - January 2011 data was updated with the April 2011 monthly report to reflect the most current performance data available and to coincide with reports provided to the Governor's Office and DSHS Secretary.</p> <p>6 This report uses an alternative measure showing monthly performance for each calendar month as agreed to by the Braam Oversight Panel to fulfill a request for a monthly informational report.</p>

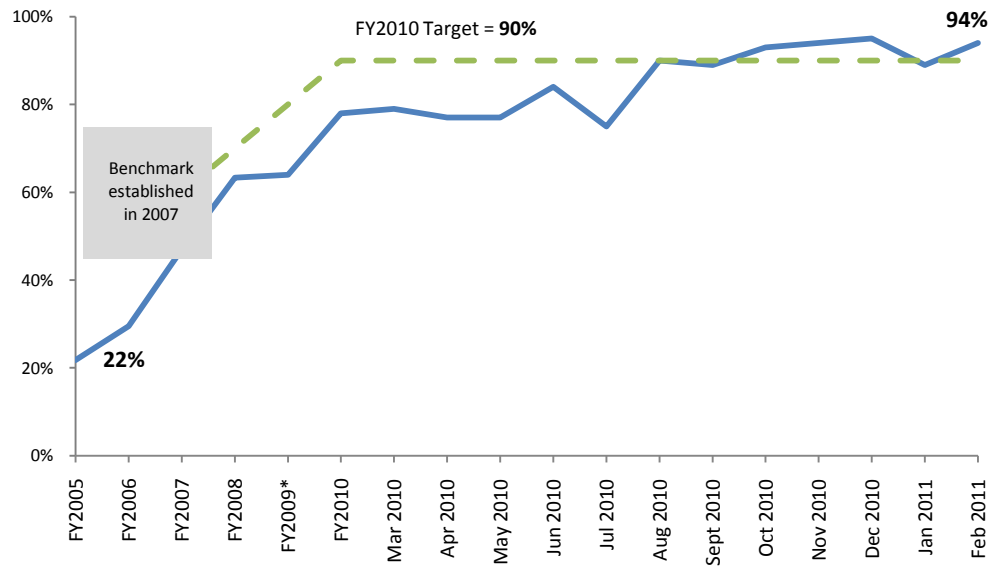
DATA

DATE	Statewide Performance	TARGET	CA Social Worker Visits		Visits Conducted by Other Agency		Attempted Visits		No Visits		Total Children Needing Visit	Region 1	Region 2	Region 3	Region 4	Region 5	Region 6
			Percent	Count	Percent	Count	Percent	Count	Percent	Count							
Apr 2010	96.3%	95%	93.8%	6699	2.5%	181	1.3%	89	2.4%	174	7143	93%	93%	96%	95%	92%	93%
May 2010	95.2%	95%	92.3%	6711	2.9%	207	1.6%	117	3.3%	237	7272	90%	92%	96%	94%	90%	92%
Jun 2010	95.6%	95%	93.5%	6911	2.1%	158	1.4%	102	3.0%	220	7391	92%	95%	95%	94%	92%	93%
Jul 2010	94.6%	95%	92.3%	6940	2.3%	170	1.9%	143	3.5%	266	7519	93%	92%	95%	93%	91%	90%
Aug 2010	95.1%	95%	92.6%	6942	2.5%	185	1.6%	120	3.4%	253	7500	92%	94%	95%	94%	92%	90%
Sept 2010	95.0%	95%	93.2%	7015	1.8%	135	1.7%	128	3.4%	252	7530	93%	95%	97%	97%	94%	97%
Oct 2010	94.9%	95%	93.0%	7290	1.9%	152	1.7%	132	3.4%	266	7840	94%	96%	98%	96%	92%	94%
Nov 2010	92.6%	95%	90.6%	7250	2.0%	162	2.9%	228	4.6%	367	8007	90%	94%	96%	93%	91%	93%
Dec 2010	95.6%	95%	93.5%	7557	2.1%	173	1.5%	121	2.9%	234	8085	93%	95%	98%	95%	96%	96%
Jan 2011	95.1%	95%	93.0%	7759	2.1%	171	1.7%	138	3.3%	272	8340	93%	91%	98%	96%	95%	96%
Feb 2011	94.6%	95%	92.5%	7827	2.1%	180	2.1%	180	3.3%	276	8463	91%	95%	98%	95%	93%	96%
Mar 2011	96.1%	95%	94.5%	7988	1.6%	132	1.1%	92	2.9%	241	8453	95%	95%	98%	96%	95%	97%

Child Health & Education Tracking (CHET) Screens - Overall Completion

Children in out-of-home care 30 days or longer will have a completed and documented Child Health and Education Tracking (CHET) Screen within 30 days of entering care. (Mental Health, Goal 1, Outcome 2)

Statewide Performance (Prior Years and Rolling 12 Months)



SUMMARY

- CA performance completing required CHET Screens within 30 days of a child entering out of home care was 94% in February 2011.
- CA consistently met the 90% benchmark October – December 2010.
- Recognition to Regions 2 and 3 for the highest performance at 100%. Regions 1, 2, 3, 4 and 6 met the 90% target in February 2011.
- In February 2011, Region 1 had a 15% increase in performance compared to January.
- CA performance is continuing to show a trend of improvement and is particularly visible in reviewing annual regional trends.
- The average number of days to complete CHET Screens in February 2011 was 26 days.
- The most significant reasons why CHET Screens were not completed continues to be incomplete domains.

ACTION PLAN

- Continue to conduct ongoing monthly review of reasons CHET Screens are not completed within 30 days to identify and address challenges.
- Continue to partner the Fostering Well-Being Program to strengthen staff and caregivers understanding of the value of EPSDT exams and assist with locating healthcare providers.
- Actively monitor CHET Screening Specialist assignments to balance workload ratios as much as possible.

DATA SOURCE: Statewide CHET Database; supplied by Brenda Villarreal, Statewide CHET Program Manager

MEASURE DEFINITION: Children in out-of-home care 30 days or longer will have completed and documented Child Health and Education Track (CHET) screens within 30 days of entering care.

DATA NOTES: **1** The benchmark for this outcome was established beginning with FY2007. FY2007 rates also reflects a change in the definition for considering a CHET Screen complete. **2** Performance is based on children newly entering out of home care that meet criteria for a CHET Screen to be completed. **3** In order for a CHET Screen to be counted as complete, the Screening Report must have all of the age appropriate screening domains completed within 30 days of entry into care. **4** FY2009 performance only includes months Feb 1 – June 30, 2009 data due to the FamLink transition period. This period also marks the start of using a revised definition for “completion.” (See complete Data Notes on page 12)

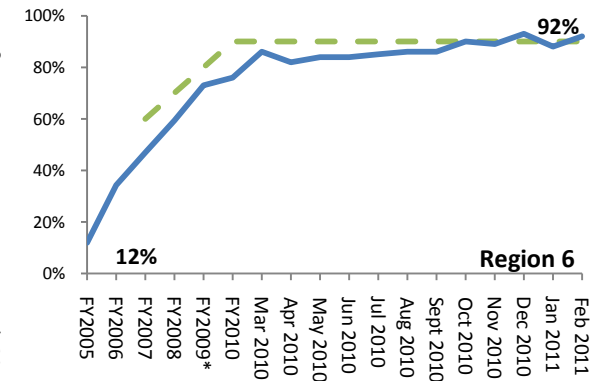
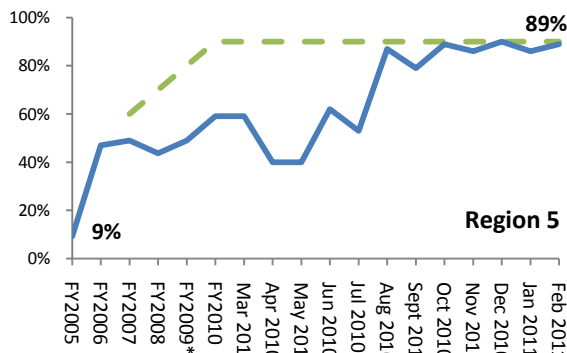
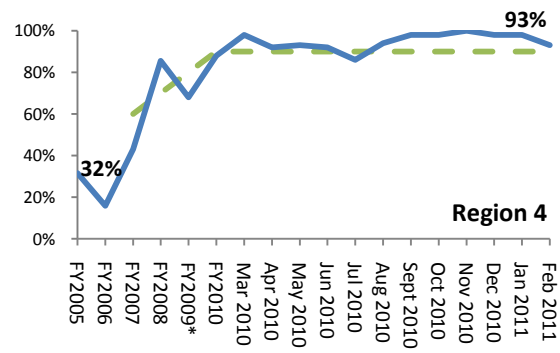
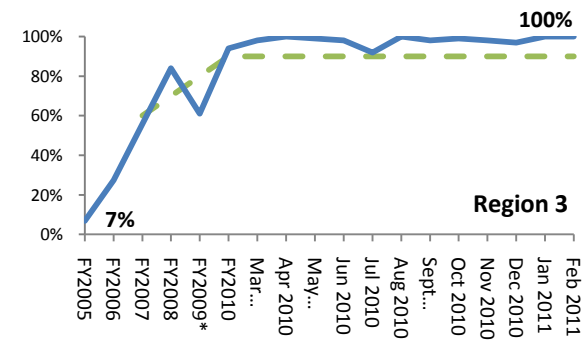
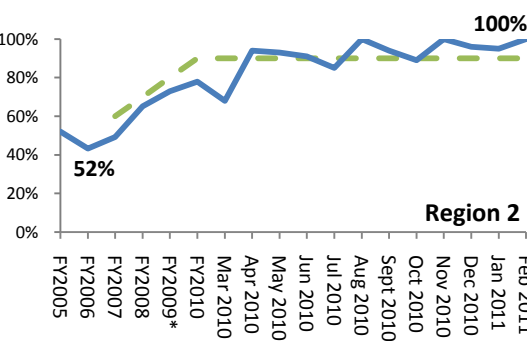
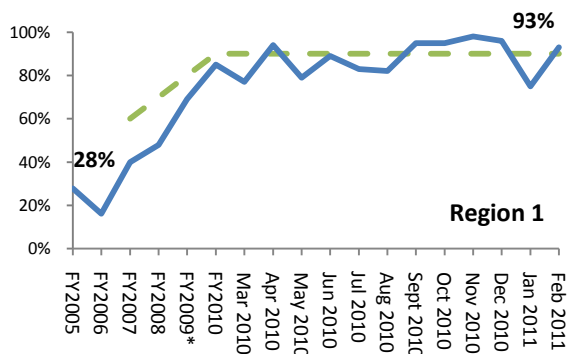
PERFORMANCE MEASURE

[TO DATA TABLE](#)

Child Health & Education Tracking (CHET) Screens - Overall Completion

Children in out-of-home care 30 days or longer will have a completed and documented Child Health and Education Tracking (CHET) Screen within 30 days of entering care. (Mental Health, Goal 1, Outcome 2)

Regional Trends (Prior Years and Rolling 12 Months; Benchmark Set in 2007)



Children's Administration

Child Health & Education Tracking (CHET) Screens - Overall Completion

Children in out-of-home care 30 days or longer will have a completed and documented Child Health and Education Tracking (CHET) Screen within 30 days of entering care. (Mental Health, Goal 1, Outcome 2)

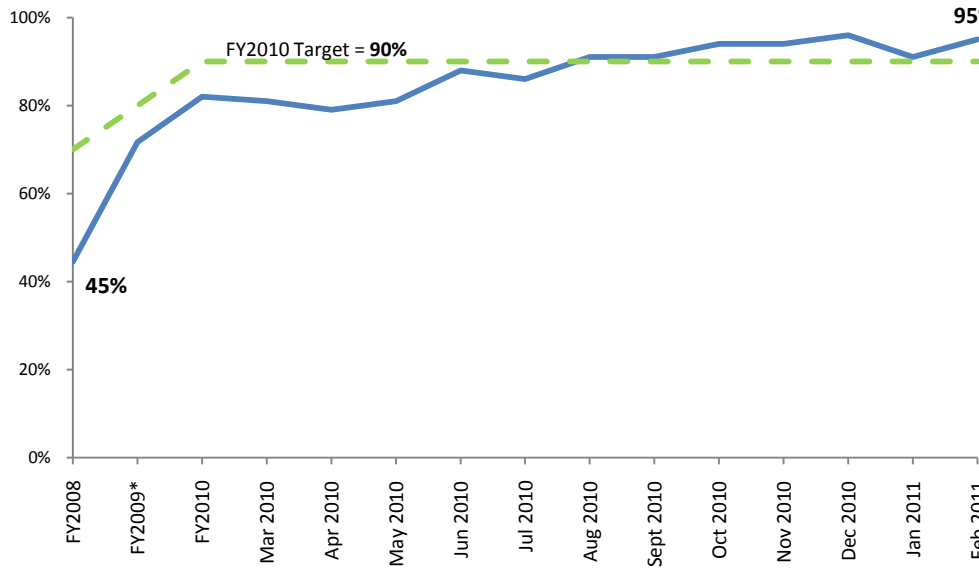
Measure definition	Percentage of children in out-of-home care 30 days or longer that have a Child Health and Education Tracking (CHET) screen completed and documented within 30 days of entering care.
Data source	Statewide CHET Database
Data supplier	Brenda Villarreal, Statewide CHET Program Manager, Children's Administration
Next update	June 2011
Frequency	Monthly
Data notes	<p>1 The benchmark for this outcome was established beginning with FY2007. FY2007 rates also reflects a change in the definition for considering a CHET Screen complete.</p> <p>2 Performance is based on children newly entering out of home care that meet criteria for a CHET Screen to be completed.</p> <p>3 In order for a CHET Screen to be counted as complete, the Screening Report must have all of the age appropriate screening domains completed within 30 days of entry into care.</p> <p>4 FY2009 performance only includes months Feb 1 – June 30, 2009 data due to the FamLink transition period. This period also marks the start of using a revised definition for "completion."</p> <p>5 Due to changes in the definition for a "completed" CHET Screen, performance for this outcome cannot be consistently compared across fiscal years. Comparisons with a consistent definition can be drawn for the following: 2005-2006, 2007-2008, and 2009 to present.</p> <p>6 The main reasons Physical Health domains were not completed within 30 days during FY2010: (a) healthcare providers unable to provide an Early Periodic Screening Diagnostic and Treatment (EPSDT) exam within 30 days (190 screens), (b) delay in receiving EPSDT exam results (115 screens), and (c) caregiver unable to take the child to the exam within 30 days (68 screens).</p> <p>7 The main reasons Education Domains were not completed within 30 days during FY2010: (a) education records requested but incomplete or not received within 30 days (78 screens), and (b) CA was unable to obtain records due to school being closed during school breaks (65 screens).</p> <p>8 Compliance with this outcome requires the statewide benchmark to be met. In addition, no region's performance may be more than 10 percentage points lower than the statewide benchmark.</p>

DATE	Statewide	TARGET	<30 days	31-45 days		46-60 days		>60 days		Incomplete		Region 1	Region 2	Region 3	Region 4	Region 5	Region 6				
				Percent	Count	Percent	Count	Percent	Count	Percent	Count										
FY2005	22%			Data not readily available												28%	52%	7%	32%	9%	12%
FY2006	30%		1377	32%	1511	Unavailable		17%	802	21%	978	16%	43%	27%	16%	47%	34%				
FY2007	47%	60%	2301		909		358		313	Unavailable		40%	49%	56%	43%	49%	47%				
FY2008	63%	70%	2964	16%	727	5%	255	8%	526	8%	358	48%	65%	84%	86%	44%	59%				
FY2009*	64%	80%	1064	13%	221	8%	130	2%	41	12%	197	69%	73%	61%	68%	49%	73%				
FY2010	78%	90%	3368	9%	379	5%	203	2%	80	6%	279	85%	78%	94%	88%	59%	76%				
Mar 2010	79%	90%	340	8%	35	5%	20	1%	5	7%	30	77%	68%	98%	98%	59%	86%				
Apr 2010	77%	90%	335	5%	22	4%	19	3%	13	11%	46	94%	94%	100%	92%	40%	82%				
May 2010	77%	90%	365	9%	43	2%	9	2%	8	10%	46	79%	93%	99%	93%	40%	84%				
Jun 2010	84%	90%	387	6%	28	3%	15	1%	4	6%	28	89%	91%	98%	92%	62%	84%				
Jul 2010	75%	90%	268	8%	28	6%	20	2%	6	9%	33	83%	85%	92%	86%	53%	85%				
Aug 2010	90%	90%	355	4%	16	4%	14	0%	0	3%	10	82%	100%	100%	94%	87%	86%				
Sept 2010	89%	90%	374	4%	16	5%	21	0%	1	2%	7	95%	94%	98%	98%	79%	86%				
Oct 2010	93%	90%	323	2%	8	3%	11	0%	1	1%	3	95%	89%	99%	98%	89%	90%				
Nov 2010	94%	90%	220	3%	6	2%	5	0%	0	1%	3	98%	100%	98%	100%	86%	89%				
Dec 2010	95%	90%	305	2%	7	2%	6	0%	1	0%	1	96%	96%	97%	98%	90%	93%				
Jan 2011	89%	90%	255	5%	14	1%	2	0%	0	6%	16	75%	95%	100%	98%	86%	88%				
Feb 2011	94%	90%	351	2%	7	1%	5	1%	2	2%	8	93%	100%	100%	93%	89%	92%				

CHET Screens - Physical Health Domain

Percentage of children with a completed Early and Periodic Screening, Diagnosis and Treatment (EPSDT) exam within 30 days of entry into care. (Mental Health, Goal 1, Outcome 2)

Statewide Performance (Prior Years and Rolling 12 Months)



SUMMARY

- CA achieved the 90% benchmark statewide August 2010 - February 2011 for completing the Physical Health Domain within 30 days of a child entering out of home care. February performance was 95%.
- Recognition to Region 3 who achieved 100% performance the December 2010 - February 2011 and Region 2 who achieved 100% in February 2011.

ACTION PLAN

- Continue to conduct ongoing monthly review of reasons Physical Health Domains are not completed within 30 days to identify and address challenges.
- Follow up with healthcare providers that regularly do not provide timely results.
- Continue to partner with the DSHS Fostering Well-Being Program to strengthen staff and caregiver understanding of the value of EPSDT exams.

DATA SOURCE: Statewide CHET Database; supplied by Brenda Villarreal, Statewide CHET Manager

MEASURE DEFINITION: Percentage of children with completed EPSDT exams within 30 days of entry into care.

DATA NOTES: 1 See complete Data Notes for Overall CHET Screen Completion on page 12. 2 To achieve compliance with the Physical Health CHET Screen domain, the child must receive an Early Periodic Screening Diagnostic and Treatment (EPSDT) exam and the exam results must be obtained verbally or in writing and documented within 30 days of the child entering out-of-home care. 3 FY2008 performance was calculated using EPSDT Medicaid billing and encounter records. Beginning in 2009, the data source to calculate performance is the Statewide CHET database and FamLink. 4 *FY2009 performance only includes months Feb 1 – June 30, 2009 data due to the FamLink transition period. This period also marks the start of using a revised definition for "completion."

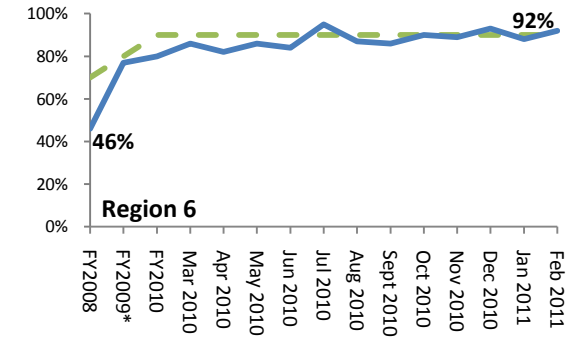
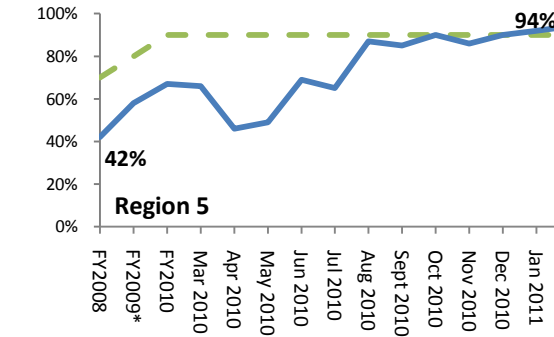
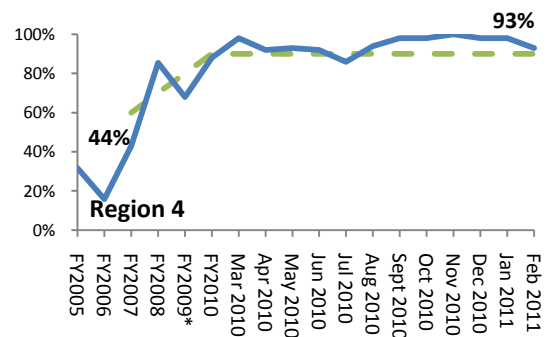
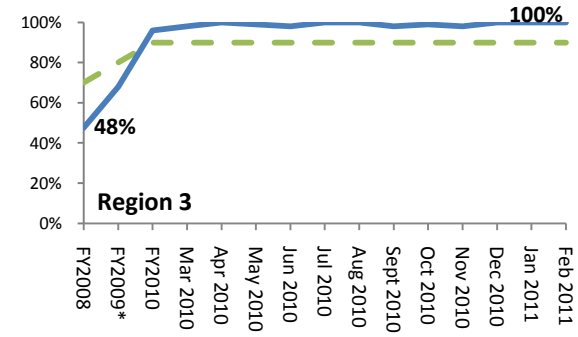
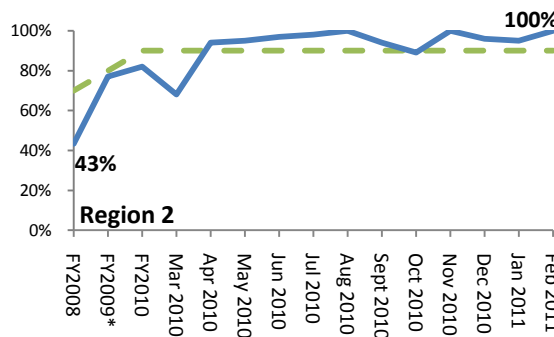
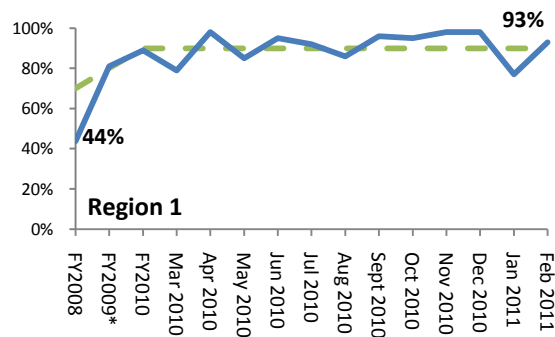
PERFORMANCE MEASURE

[TO DATA TABLE](#)

CHET Screens - Physical Health Domain

Percentage of children with a completed Early and Periodic Screening, Diagnosis and Treatment (EPSDT) exam within 30 days of entry into care. (Mental Health, Goal 1, Outcome 2)

Regional Trends (Prior Years and Rolling 12 Months)



Children's Administration

CHET Screens - Physical Health Domain (Mental Health, Goal 1, Outcome 2)

Percentage of children with a completed Early and Periodic Screening, Diagnosis and Treatment (EPSDT) exam within 30 days of entry into care. (Mental Health, Goal 1, Outcome 2)

Measure definition	Percentage of children with completed a EPSDT exam within 30 days of entry into care.
Data source	Statewide CHET Database
Data supplier	Brenda Villarreal, Statewide CHET Program Manager, Children's Administration
Next update	June 2011
Frequency	Monthly
Data notes	<p>1 See complete Data Notes for Overall CHET Screen Completion on page 12.</p> <p>2 To achieve compliance with the Physical Health CHET Screen domain, the child must receive an Early Periodic Screening Diagnostic and Treatment (EPSDT) exam and the exam results must be obtained verbally or in writing and documented within 30 days of the child entering out of home care.</p> <p>3 FY2008 performance was calculated using EPSDT Medicaid billing and encounter records. Beginning in 2009, the data source to calculate performance is the Statewide CHET database and FamLink.</p> <p>4 *FY2009 performance only includes months Feb 1 – June 30, 2009 data due to the FamLink transition period. This period also marks the start of using a revised definition for "completion."</p>

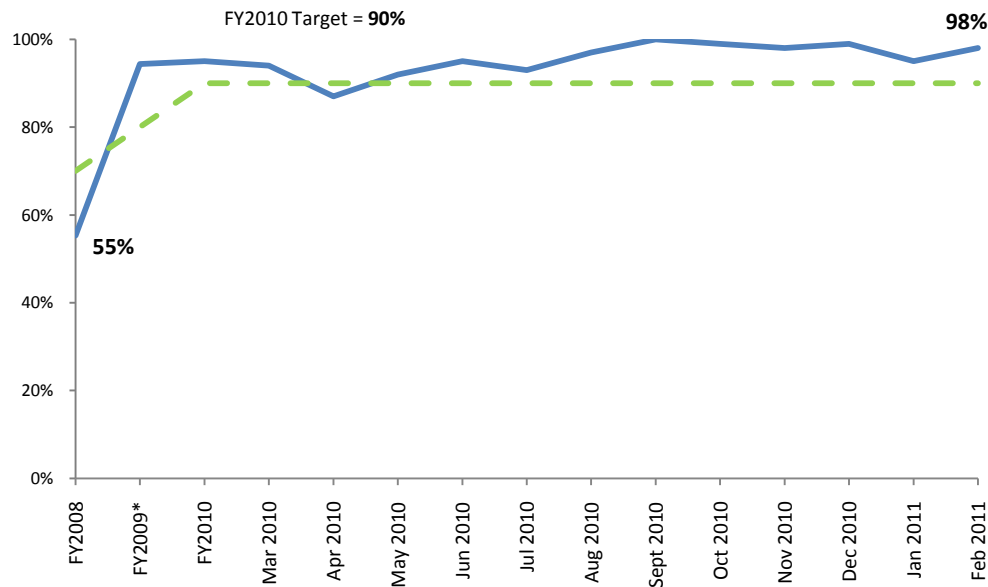
DATA

DATE	Statewide	TARGET	<30 days	31-45 days		46-60 days		>60 days		Incomplete		Region 1	Region 2	Region 3	Region 4	Region 5	Region 6
				Percent	Count	Percent	Count	Percent	Count	Percent	Count						
FY2008	45%	70%	2090	12%	570	7%	327	7%	335	29%	1376	44%	43%	48%	44%	42%	46%
FY2009*	72%	80%	1188	13%	208	5%	79	2%	31	9%	157	81%	77%	68%	74%	58%	77%
FY2010	82%	90%	3554	8%	327	3%	136	1%	45	6%	247	89%	82%	96%	90%	67%	80%
Mar 2010	81%	90%	349	8%	35	3%	13	1%	2	7%	31	79%	68%	98%	98%	66%	86%
Apr 2010	79%	90%	345	3%	15	4%	16	3%	11	11%	48	98%	94%	100%	92%	46%	82%
May 2010	81%	90%	382	6%	30	2%	9	1%	4	10%	46	85%	95%	99%	93%	49%	86%
Jun 2010	88%	90%	407	6%	30	2%	7	0%	1	4%	17	95%	97%	98%	96%	69%	84%
Jul 2010	86%	90%	306	6%	20	2%	7	1%	2	6%	20	92%	98%	100%	94%	65%	95%
Aug 2010	91%	90%	361	4%	14	3%	10	0%	1	2%	9	86%	100%	100%	98%	87%	87%
Sept 2010	91%	90%	383	5%	20	2%	8	0%	1	2%	7	96%	94%	98%	98%	85%	86%
Oct 2010	94%	90%	324	3%	9	3%	10	0%	0	1%	3	95%	89%	99%	98%	90%	90%
Nov 2010	94%	90%	220	3%	6	1%	3	0%	0	2%	5	98%	100%	98%	100%	86%	89%
Dec 2010	96%	90%	308	1%	4	2%	7	0%	0	0%	1	98%	96%	100%	98%	90%	93%
Jan 2011	91%	90%	261	3%	9	1%	2	0%	0	5%	15	77%	95%	100%	98%	92%	88%
Feb 2011	95%	90%	354	2%	6	1%	4	1%	2	2%	7	93%	100%	100%	93%	94%	92%

CHET Screens - Developmental Domain

Percentage of children ages 0-60 months with a completed developmental screen within 30 days of entry into care. (Mental Health, Goal 1, Outcome 2)

Statewide Performance (Prior Years and Rolling 12 Months)



SUMMARY

- CA consistently exceeds the 90% benchmark for children having their CHET Screen Developmental Domain completed within 30 days. Performance in February 2011 was 98%.

- The 90% target was achieved in 11 of the last 12 months.

- Every region exceeded the benchmark between September - December 2010. In January and February 2011, Regions 2, 3, 4 and 6 achieved 100% performance.

ACTION PLAN

- Continue to conduct ongoing monthly review of reasons Developmental Domains are not completed within 30 days to identify and address challenges.

DATA SOURCE: Statewide CHET Database; supplied by Brenda Villarreal, Statewide CHET Program Manager

MEASURE DEFINITION: Percentage of children ages 0-60 months with completed developmental screens within 30 days of entry into care.

DATA NOTES: **1** See complete Data Notes for Overall CHET Screen Completion on page 12. **2** To achieve compliance with the Developmental CHET Screen domain, children from birth to 60 months of age must have an age appropriate screening tool (Denver or ASQ) completed within 30 days of the child entering out of home care. **3** *FY2009 performance only includes months Feb 1 – June 30, 2009 data due to the FamLink transition period. This period also marks the start of using a revised definition for “completion.”

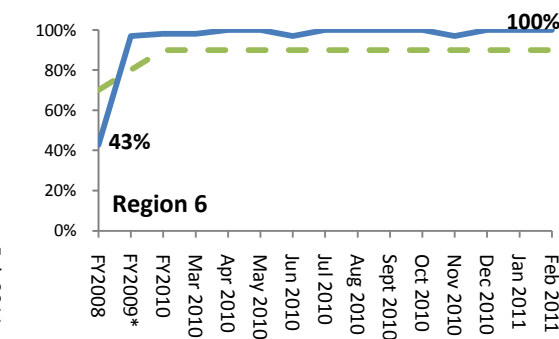
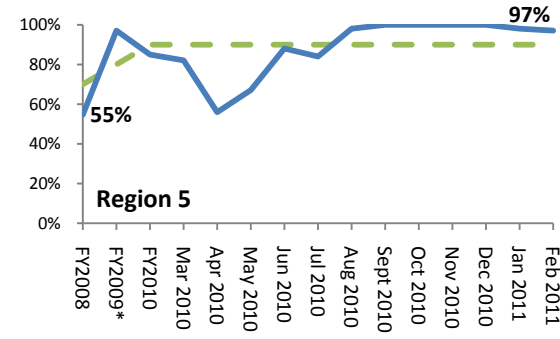
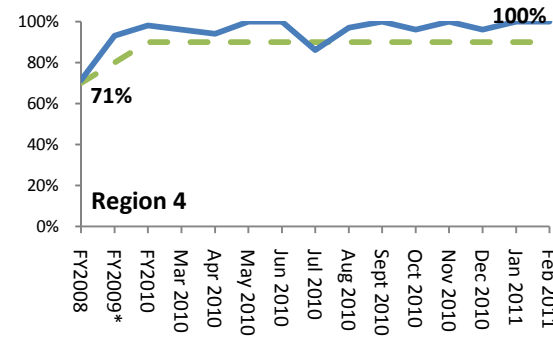
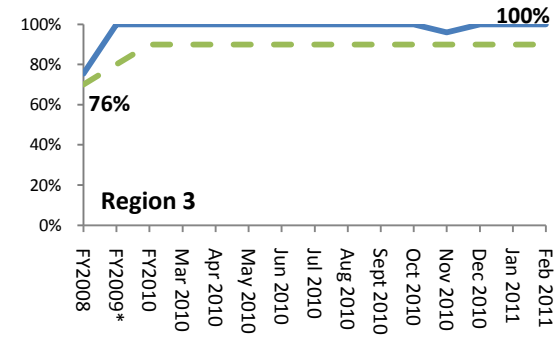
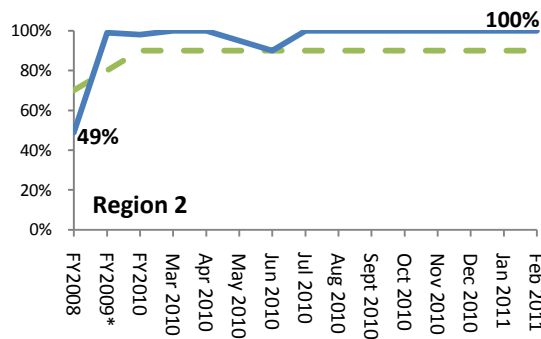
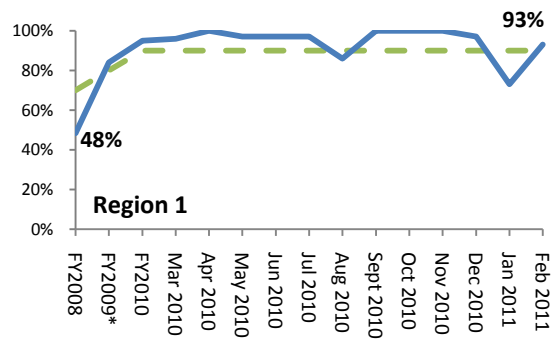
PERFORMANCE MEASURE

[TO DATA TABLE](#)

CHET Screens - Developmental Domain

Percentage of children ages 0-60 months with a completed developmental screen within 30 days of entry into care. (Mental Health, Goal 1, Outcome 2)

Regional Trends (Prior Years and Rolling 12 Months)



Children's Administration

CHET Screens - Developmental Domain

Percentage of children ages 0-60 months with a completed developmental screen within 30 days of entry into care. (Mental Health, Goal 1, Outcome 2)

Measure definition	Percentage of children ages 0-60 months with a completed developmental screen within 30 days of entry into care.
Data source	Statewide CHET Database
Data supplier	Brenda Villarreal, Statewide CHET Program Manager, Children's Administration
Next update	June 2011
Frequency	Monthly
Data notes	<p>1 See complete Data Notes for Overall CHET Screen Completion on page 12.</p> <p>2 To achieve compliance with the Developmental CHET Screen domain, children from birth to 60 months of age must have an age appropriate screening tool (Denver or ASQ) completed within 30 days of the child entering out of home care.</p> <p>3 *FY2009 performance only includes months Feb 1 – June 30, 2009 data due to the FamLink transition period. This period also marks the start of using a revised definition for "completion."</p>

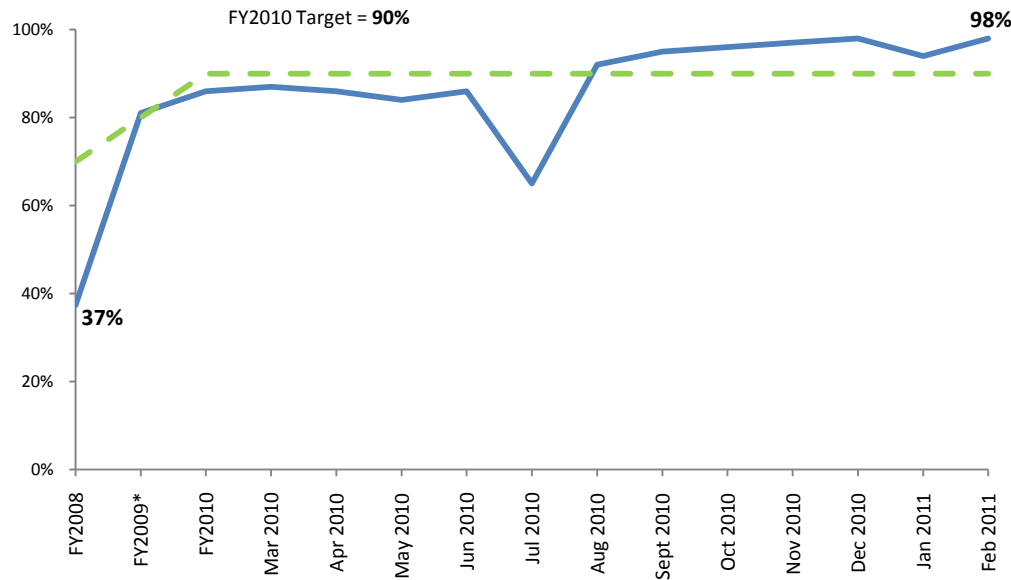
DATA

DATE	Statewide	TARGET	<30 days	31-45 days		46-60 days		>60 days		Incomplete		Region 1	Region 2	Region 3	Region 4	Region 5	Region 6
				Percent	Count	Percent	Count	Percent	Count	Percent	Count						
FY2008	55%	70%	465	6%	50	2%	18	1%	8	36%	300	48%	49%	76%	71%	55%	43%
FY2009*	94%	80%	773	2%	20	1%	12	1%	5	2%	13	84%	99%	100%	93%	97%	97%
FY2010	95%	90%	2143	2%	48	9%	9	0%	6	2%	56	95%	98%	100%	98%	85%	98%
Mar 2010	94%	90%	226	2%	5	0%	0	0%	0	4%	10	96%	100%	100%	96%	82%	98%
Apr 2010	87%	90%	200	3%	7	0%	0	0%	1	10%	22	100%	100%	100%	94%	56%	100%
May 2010	92%	90%	233	3%	8	1%	1	1%	2	10%	10	97%	95%	100%	100%	67%	100%
Jun 2010	95%	90%	256	2%	5	0%	0	0%	0	9%	9	97%	90%	100%	100%	88%	97%
Jul 2010	93%	90%	191	1%	3	2%	2	0%	0	9%	9	97%	100%	100%	86%	84%	100%
Aug 2010	97%	90%	222	2%	5	3%	3	0%	0	0%	0	86%	100%	100%	97%	98%	100%
Sept 2010	100%	90%	230	0%	0	0%	0	0%	0	0%	0	100%	100%	100%	100%	100%	100%
Oct 2010	99%	90%	187	0%	0	1%	1	0%	0	0%	0	100%	100%	100%	96%	100%	100%
Nov 2010	98%	90%	131	1%	1	0%	0	0%	0	1%	1	100%	100%	96%	100%	100%	97%
Dec 2010	99%	90%	176	0%	0	0%	0	1%	1	1%	1	97%	100%	100%	96%	100%	100%
Jan 2011	95%	90%	132	1%	1	0%	0	0%	0	4%	6	73%	100%	100%	100%	98%	100%
Feb 2011	98%	90%	174	1%	1	0%	0	0%	0	2%	3	93%	100%	100%	100%	97%	100%

CHET Screens - Education Domain

Percentage of school-aged children for whom educational records are received within 30 days of entry into care. (Mental Health, Goal 1, Outcome 2)

Statewide Performance (Prior Years and Rolling 12 Months)



SUMMARY

- CA performance for children having their CHET Screen Education Domain completed within 30 days of entering out of home care was 98% in February 2011.
- CA has consistently exceeded the 90% benchmark since August 2010.
- Recognition to Regions 2, 3 and 5 who achieved 100% performance in February 2011.
- Data showing the primary reason the Education Domain is not completed within 30 days is CA not receiving education records within 30 days.

ACTION PLAN

- Continue to conduct ongoing monthly review of reasons Education Domains are not completed within 30 days to identify and address challenges.
- Continue to build relationships and follow up with local and district school staff to increase timely receipt of school records.
- Identify schools and school districts that regularly do not provide timely results, and triage and target follow-up.

DATA SOURCE: Statewide CHET Database; supplied by Brenda Villarreal, Statewide CHET Program Manager

MEASURE DEFINITION: Percentage of school-aged children for whom educational records are received within 30 days of entry into care.

DATA NOTES: 1 See complete Data Notes for Overall CHET Screen Completion on page 12. 2 To achieve compliance with the Education CHET Screen domain, all education records must be received for school aged children within 30 days of the child entering out of home care, including additional requirements for special education and youth in grades 11-12. 3 *FY2009 performance only includes months Feb 1 – June 30, 2009 data due to the FamLink transition period. This period also marks the start of using a revised definition for “completion.” (See Complete Data notes on page 21)

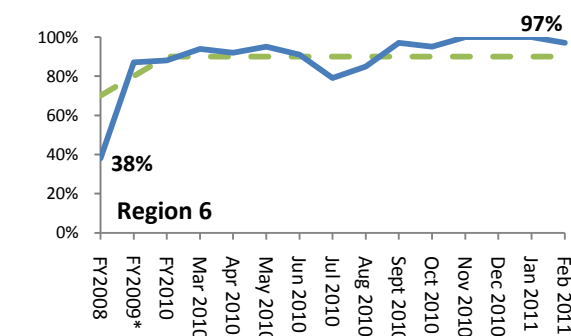
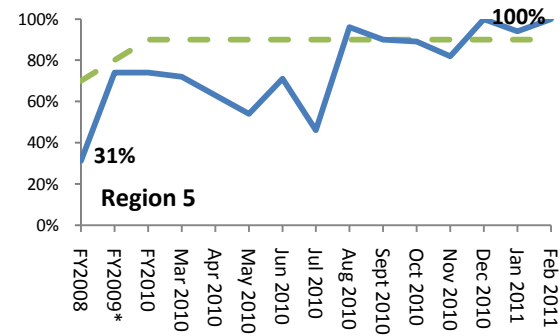
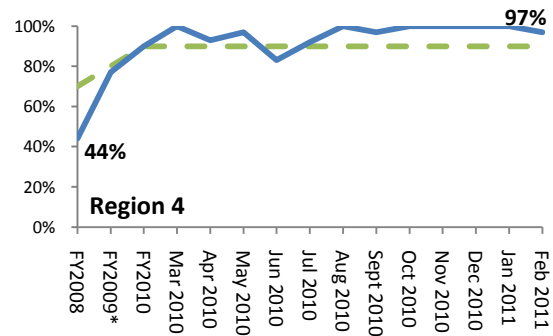
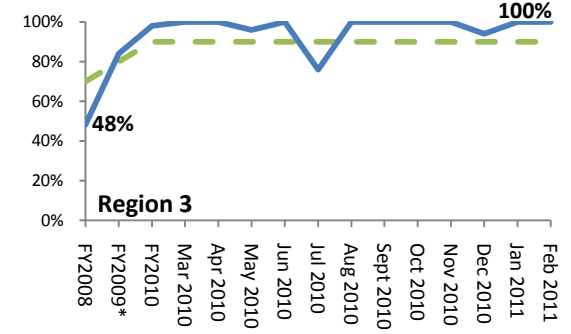
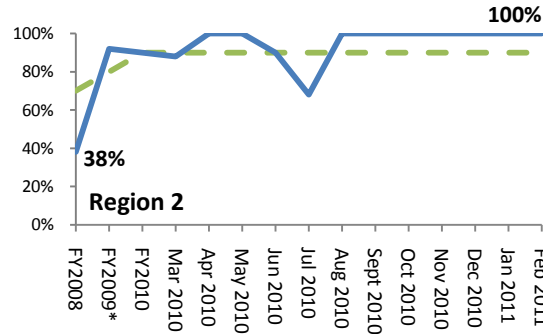
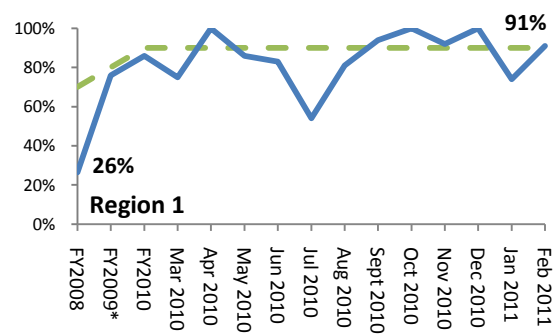
PERFORMANCE MEASURE

[TO DATA TABLE](#)

CHET Screens - Education Domain

Percentage of school-aged children for whom educational records are received within 30 days of entry into care. (Mental Health, Goal 1, Outcome 2)

Regional Trends (Prior Years and Rolling 12 Months)



Children's Administration

CHET Screens - Education Domain (Mental Health, Goal 1, Outcome 2)

Percentage of school-aged children for whom educational records are received within 30 days of entry into care.

Measure definition	Percentage of school-aged children for whom educational records are received within 30 days of entry into care.
Data source	Statewide CHET Database
Data supplier	Brenda Villarreal, Statewide CHET Program Manager, Children's Administration
Next update	June 2011
Frequency	Monthly
Data notes	<p>1 See complete Data Notes for Overall CHET Screen Completion on page 12.</p> <p>2 To achieve compliance with the Education CHET Screen domain, all education records (as identified in list below) must be received for school aged children within 30 days of the child entering out of home care, including additional requirements for special education and youth in grades 11-12:</p> <ul style="list-style-type: none"> - The child's specific student identification (SSID) number - Most recent year-end transcript (secondary) OR report card (elementary) identifying grades and GPA (including the most recent grading period, child's GPA, or grades) - Attendance records - Discipline records from the most recent complete school year and most recent grading period - For children receiving special education services: School evaluation report, and IEP or 504 Plan - For students in grades 11 – 12: Tenth grade WASL scores <p>3 *FY2009 performance only includes months Feb 1 – June 30, 2009 data due to the FamLink transition period. This period also marks the start of using a revised definition for "completion."</p>

DATA

DATE	Statewide	TARGET	<30 days	31-45 days		46-60 days		>60 days		Incomplete		Region 1	Region 2	Region 3	Region 4	Region 5	Region 6
				Percent	Count	Percent	Count	Percent	Count	Percent	Count						
FY2008	37%	70%	787	4%	86	2%	43	3%	57	54%	1129	26%	38%	48%	44%	31%	38%
FY2009*	81%	80%	580	5%	38	2%	16	2%	14	10%	70	76%	92%	84%	77%	74%	87%
FY2010	86%	90%	1495	5%	84	3%	51	0%	7	6%	104	86%	90%	98%	90%	74%	88%
Mar 2010	87%	90%	147	3%	5	3%	5	0%	0	7%	12	75%	88%	100%	100%	72%	94%
Apr 2010	86%	90%	158	3%	5	2%	4	0%	0	9%	16	100%	100%	100%	93%	63%	92%
May 2010	84%	90%	161	3%	5	0%	0	1%	1	13%	25	86%	100%	96%	97%	54%	95%
Jun 2010	86%	90%	132	4%	6	3%	5	0%	0	7%	11	83%	90%	100%	83%	71%	91%
Jul 2010	65%	90%	88	11%	15	7%	10	11%	15	7%	10	54%	68%	76%	92%	46%	79%
Aug 2010	92%	90%	131	2%	3	1%	2	0%	0	4%	6	81%	100%	100%	100%	96%	85%
Sept 2010	95%	90%	150	2%	3	1%	2	0%	0	2%	3	94%	100%	100%	97%	90%	97%
Oct 2010	96%	90%	132	2%	3	0%	0	0%	0	1%	2	100%	100%	100%	100%	89%	95%
Nov 2010	97%	90%	89	0%	0	0%	0	0%	0	3%	3	92%	100%	100%	100%	82%	100%
Dec 2010	98%	90%	124	2%	2	0%	0	0%	0	0%	0	100%	100%	94%	100%	100%	100%
Jan 2011	94%	90%	126	1%	2	0%	0	0%	0	4%	6	74%	100%	100%	100%	94%	100%
Feb 2011	98%	90%	182	0%	0	1%	1	1%	1	1%	2	91%	100%	100%	97%	100%	97%

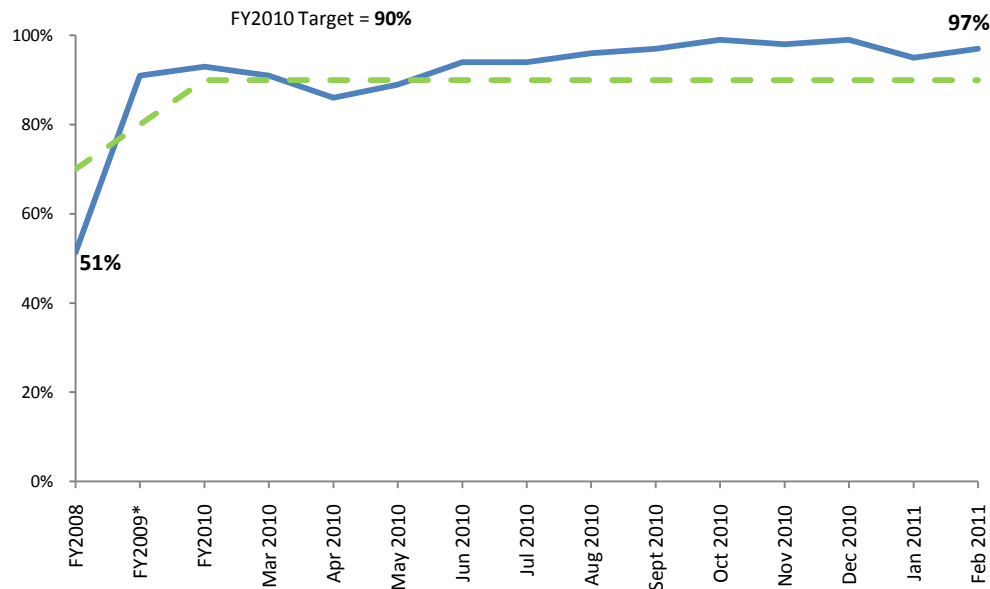
PERFORMANCE MEASURE

[TO DATA TABLE](#)

CHET Screens - Emotional/Behavioral Domain

Percentage of children with a completed Child Behavior Checklist within 30 days of entry into care. (Mental Health, Goal 1, Outcome 2)

Statewide Performance (Prior Years and Rolling 12 Months)



SUMMARY

- CA continues to exceed the 90% benchmark for completing the CHET Screen Emotional/Behavioral domain within 30 days of a child entering out of home care. February 2011 performance was 97%.
- CA has exceeded the 90% benchmark statewide since June 2010.
- Recognition to Regions 2 and 3 for achieving 100% performance in February 2011.

ACTION PLAN

- Continue to conduct ongoing monthly review of reasons the Emotional/Behavioral Domain are not completed within 30 days to identify and address challenges.

DATA SOURCE: Statewide CHET Database; supplied by Brenda Villarreal, Statewide CHET Program Manager

MEASURE DEFINITION: Percentage of children ages 6-18 years with a completed Pediatric Symptom Checklist (PSC) - 17 and children age 3 months to 5 years of age with a completed ASQ-SE within 30 days of entry into care.

DATA NOTES: 1 See complete Data Notes for Overall CHET Screen Completion on page 12. 2 To achieve compliance with the Emotional-Behavioral CHET Screen domain, children age 3 months to 5 years of age must have a completed ASQ-SE and children age 6 years to 18 years must have a completed PSC-17 within 30 days of entering out of home care. 3 *FY2009 performance only includes months Feb 1 – June 30, 2009 data due to the FamLink transition period. This period also marks the start of using a revised definition for “completion.”

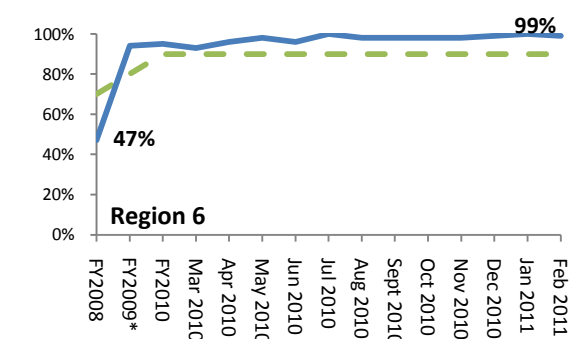
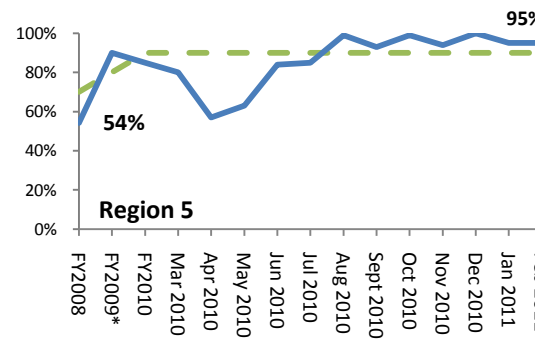
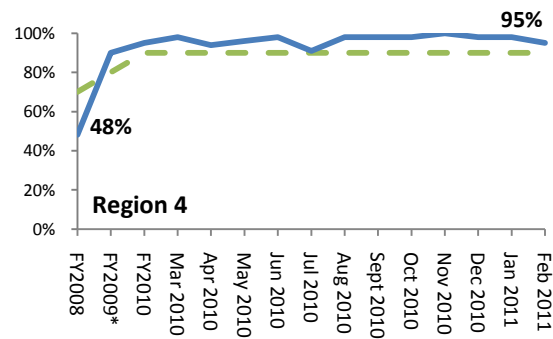
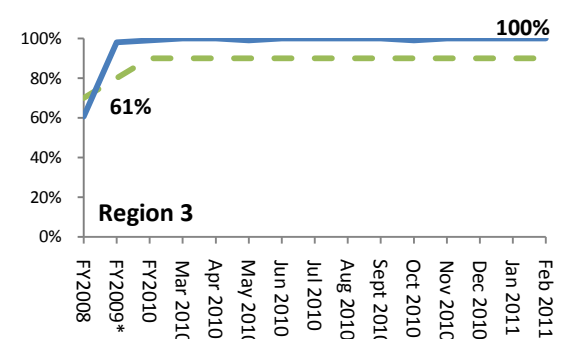
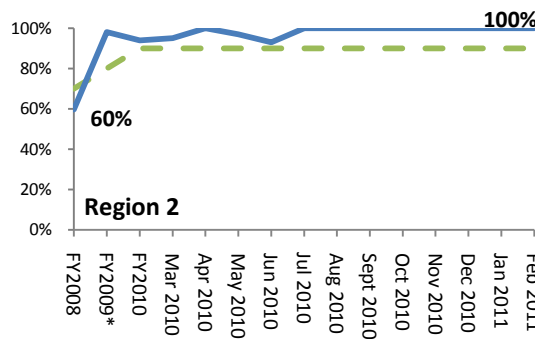
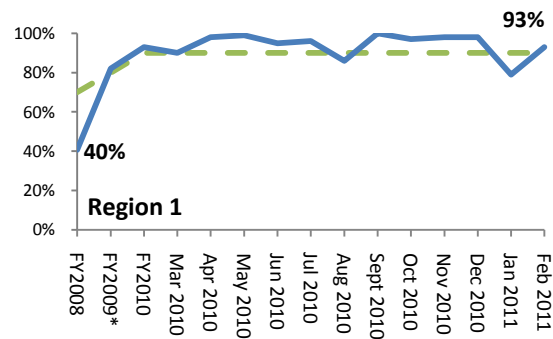
PERFORMANCE MEASURE

[TO DATA TABLE](#)

CHET Screens - Emotional/Behavioral Domain

Percentage of children with a completed Child Behavior Checklist within 30 days of entry into care. (Mental Health, Goal 1, Outcome 2)

Regional Trends (Prior Years and Rolling 12 Months)



Children's Administration

CHET Screens - Emotional/Behavioral Domain

Percentage of children with a completed Child Behavior Checklist within 30 days of entry into care. (Mental Health, Goal 1, Outcome 2)

Measure definition	Percentage of children ages 6-18 years with a completed Pediatric Symptom Checklist (PSC) - 17 and children age 3 months to 5 years of age with a completed ASQ-SE within 30 days of entry into care.
Data source	Statewide CHET Database
Data supplier	Brenda Villarreal, Statewide CHET Program Manager, Children's Administration
Next update	June 2011
Frequency	Monthly
Data notes	<p>1 See complete Data Notes for Overall CHET Screen Completion on page 12.</p> <p>2 To achieve compliance with the Emotional-Behavioral CHET Screen domain, children age 3 months to 5 years of age must have a completed ASQ-SE and children age 6 years to 18 years must have a completed PSC-17 within 30 days of entering out of home care.</p> <p>3 *FY2009 performance only includes months Feb 1 – June 30, 2009 data due to the FamLink transition period. This period also marks the start of using a revised definition for "completion."</p>

DATA

DATE	Statewide	TARGET	<30 days	31-45 days		46-60 days		>60 days		Incomplete		Region 1	Region 2	Region 3	Region 4	Region 5	Region 6
				Percent	Count	Percent	Count	Percent	Count	Percent	Count						
FY2008	51%	70%	1077	4%	88	2%	44	3%	60	40%	831	41%	60%	61%	48%	54%	47%
FY2009*	91%	80%	1417	3%	53	1%	19	1%	17	3%	44	82%	98%	98%	90%	90%	94%
FY2010	93%	90%	3843	3%	117	1%	38	0%	15	3%	132	93%	94%	99%	95%	85%	95%
Mar 2010	91%	90%	384	3%	12	1%	4	0%	0	5%	22	90%	95%	100%	98%	80%	93%
Apr 2010	86%	90%	360	4%	16	1%	2	0%	0	10%	41	98%	100%	100%	94%	57%	96%
May 2010	89%	90%	414	3%	12	0%	1	0%	2	7%	34	99%	97%	99%	96%	63%	98%
Jun 2010	94%	90%	423	3%	14	0%	2	0%	1	3%	12	95%	93%	100%	98%	84%	96%
Jul 2010	94%	90%	328	1%	2	0%	0	1%	2	5%	18	96%	100%	100%	91%	85%	100%
Aug 2010	96%	90%	375	2%	6	1%	3	0%	0	1%	5	86%	100%	100%	98%	99%	98%
Sept 2010	97%	90%	400	1%	4	1%	5	0%	0	0%	2	100%	100%	100%	98%	93%	98%
Oct 2010	99%	90%	330	0%	0	1%	3	0%	0	1%	2	97%	100%	99%	98%	99%	98%
Nov 2010	98%	90%	226	0%	0	0%	0	0%	0	2%	4	98%	100%	100%	100%	94%	98%
Dec 2010	99%	90%	312	0%	1	0%	1	0%	1	0%	0	98%	100%	100%	98%	100%	99%
Jan 2011	95%	90%	264	1%	3	0%	0	0%	0	4%	12	79%	100%	100%	98%	95%	100%
Feb 2011	97%	90%	357	1%	3	0%	1	0%	1	2%	7	93%	100%	100%	95%	95%	99%

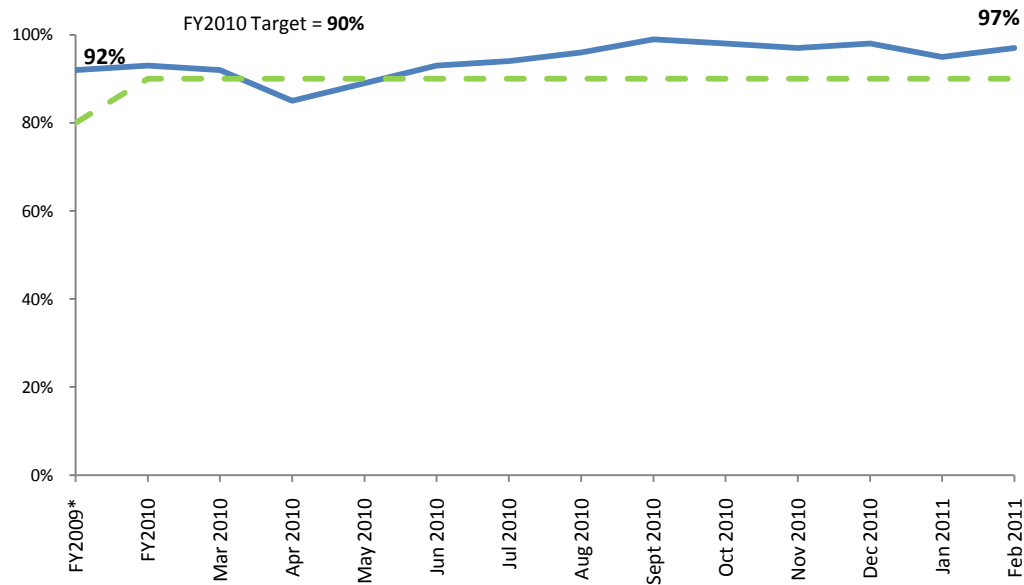
PERFORMANCE MEASURE

[TO DATA TABLE](#)

CHET Screens - Connections Domain

Percentage of children with a completed Connections domain within 30 days of entry into care. (Mental Health, Goal 1, Outcome 2)

Statewide Performance (Prior Years and Rolling 12 Months)



SUMMARY

- CA continues to exceed the 90% benchmark statewide for children having their CHET Screen Connections Domain completed within 30 days of entering out of home care. February performance was 97%.
- CA has exceeded the monthly benchmark statewide since June 2010 and all regions have exceeded the benchmark September – December 2010.
- Recognition to Regions 2, 3, 4, and 6 for exceeding the 90% benchmark the past 12 months and to Regions 2 and 3 for 100% performance in February 2011.

ACTION PLAN

- Continue to conduct ongoing monthly review of reasons Connections Domains are not completed within 30 days to identify and address challenges.

DATA SOURCE: Statewide CHET Database; supplied by Brenda Villarreal, Statewide CHET Program Manager

MEASURE DEFINITION: Percentage of children with completed Connections within 30 days of entry into care.

DATA NOTES: 1 See complete Data Notes for Overall CHET Screen Completion on page 12. 2 To achieve compliance with the Connections CHET Screen domain, all children must have their "connections" assessed within 30 days of entering out of home care. 3 *FY2009 performance only includes months Feb 1 – June 30, 2009 data due to the FamLink transition period. This period also marks the start of using a revised definition for "completion." FY2009 was also the first year information regarding assessment of the Connections domain was documented in the Statewide CHET database.

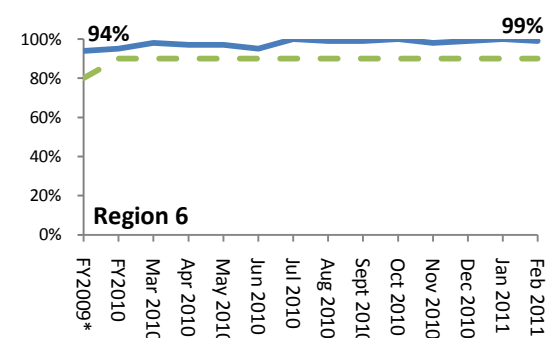
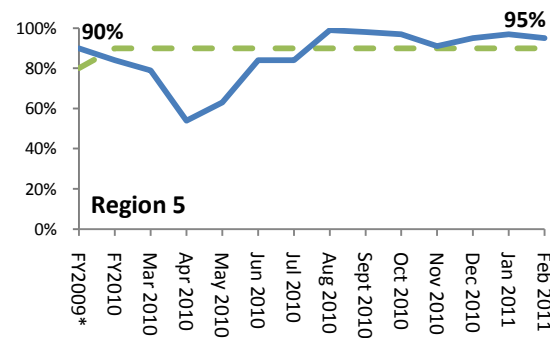
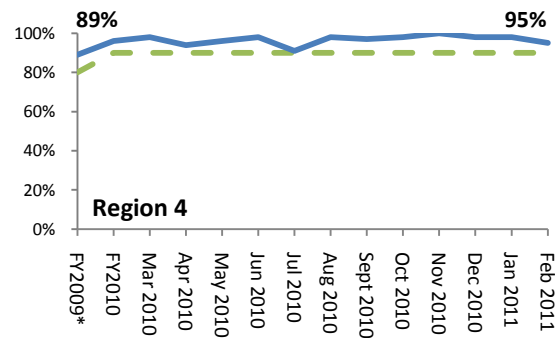
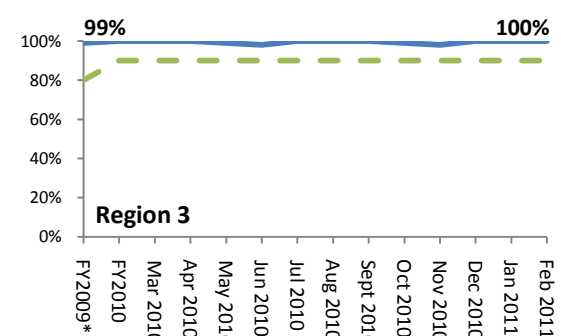
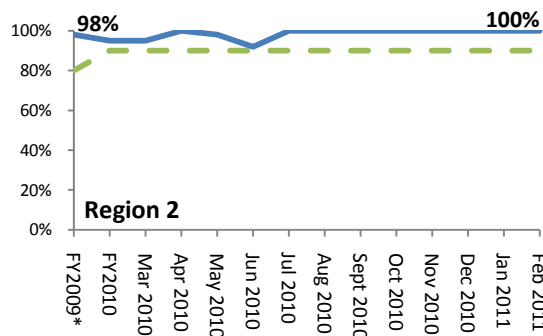
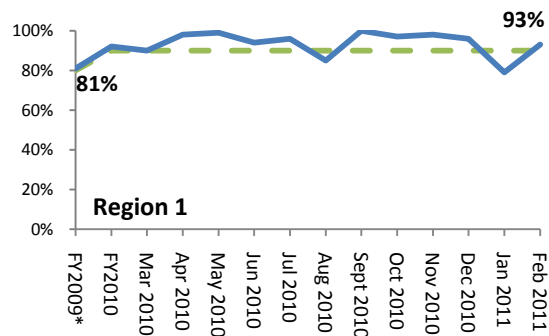
PERFORMANCE MEASURE

[TO DATA TABLE](#)

CHET Screens - Connections Domain

Percentage of children with a completed Connections domain within 30 days of entry into care. (Mental Health, Goal 1, Outcome 2)

Regional Trends (Prior Years and Rolling 12 Months)



Children's Administration

CHET Screens - Connections Domain

Percentage of children with a completed Connections domain within 30 days of entry into care. (Mental Health, Goal 1, Outcome 2)

Measure definition	Percentage of children with a completed CHET Screen Connections domain within 30 days of entry into care.
Data source	Statewide CHET Database
Data supplier	Brenda Villarreal, Statewide CHET Program Manager, Children's Administration
Next update	June 2011
Frequency	Monthly
Data notes	<p>1 See complete Data Notes for Overall CHET Screen Completion on page 12.</p> <p>2 To achieve compliance with the Connections CHET Screen domain, all children must have their "connections" assessed within 30 days of entering out of home care.</p> <p>3 *FY2009 performance only includes months Feb 1 – June 30, 2009 data due to the FamLink transition period. This period also marks the start of using a revised definition for "completion." FY2009 was also the first year information regarding assessment of the Connections domain was documented in the Statewide CHET database.</p>

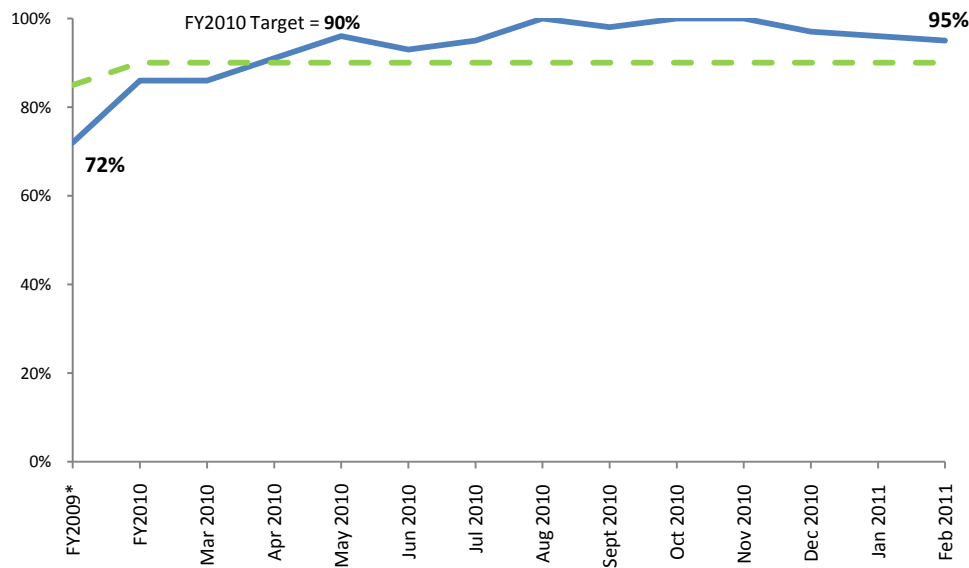
DATA

DATE	Statewide	TARGET	<30 days	31-45 days		46-60 days		>60 days		Incomplete		Region 1	Region 2	Region 3	Region 4	Region 5	Region 6
				Percent	Count	Percent	Count	Percent	Count	Percent	Count						
FY2009*	92%	80%	1513	4%	60	1%	22	1%	12	3%	46	81%	98%	99%	89%	90%	94%
FY2010	93%	90%	3996	3%	115	1%	43	0%	16	3%	139	92%	95%	100%	96%	84%	95%
Mar 2010	92%	90%	395	2%	10	70%	3	0%	0	5%	22	90%	95%	100%	98%	79%	98%
Apr 2010	85%	90%	371	5%	21	1%	2	0%	1	9%	40	98%	100%	100%	94%	54%	97%
May 2010	89%	90%	420	2%	11	0%	1	0%	2	8%	37	99%	98%	99%	96%	63%	97%
Jun 2010	93%	90%	428	4%	17	0%	1	0%	1	3%	15	94%	92%	98%	98%	84%	95%
Jul 2010	94%	90%	332	1%	4	1%	2	0%	0	5%	17	96%	100%	100%	91%	84%	100%
Aug 2010	96%	90%	381	1%	5	1%	4	0%	0	1%	5	85%	100%	100%	98%	99%	99%
Sept 2010	99%	90%	413	1%	3	0%	2	0%	0	0%	1	100%	100%	100%	97%	98%	99%
Oct 2010	98%	90%	340	0%	0	1%	2	0%	0	1%	4	97%	100%	99%	98%	97%	100%
Nov 2010	97%	90%	228	0%	1	0%	0	0%	0	2%	5	98%	100%	98%	100%	91%	98%
Dec 2010	98%	90%	314	0%	1	1%	3	0%	1	0%	1	96%	100%	100%	98%	95%	99%
Jan 2011	95%	90%	274	0%	1	0%	0	0%	0	4%	12	79%	100%	100%	98%	97%	100%
Feb 2011	97%	90%	361	1%	3	0%	0	1%	2	2%	7	93%	100%	100%	95%	95%	99%

Early Support for Infant and Toddlers (ESIT) Program Referral within 2 Workdays

Children age 3 and under in out-of-home care will be referred to the Early Support for Infant and Toddlers (ESIT) Program within 2 workdays of identification of concerns about developmental delays from their CHET screen. (Mental Health, Goal 1, Outcome 4)

Statewide Performance (Prior Years and Rolling 12 Months)



SUMMARY

- CA performance continues to exceed the 90% benchmark statewide for referring children with identified concerns of development delays to the Early Support for Infant and Toddlers (ESIT) Program within 2 workdays. January performance was 95% (35 of 37 child referrals).
- Performance shows a steady trend of improvement over time.
- CA has met the 90% benchmark since April 2010 and the requirement for regional performance to be no more than 10 percentage points lower than the benchmark since June 2010 as well.
- Recognition to Region 2, 3, 5, and 6 for achieving 100% performance in February 2011.

ACTION PLAN

- Continue to conduct ongoing monthly review of reasons ESIT Program referrals are not made within 2 workdays to identify and address any identified challenges.

DATA SOURCE: Statewide CHET Database; supplied by Brenda Villarreal, Statewide CHET Program Manager

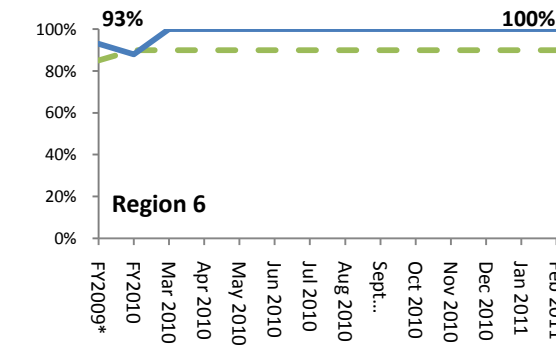
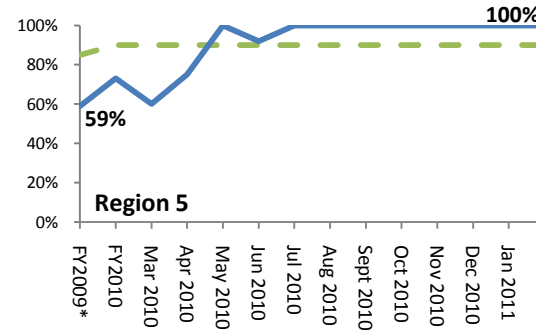
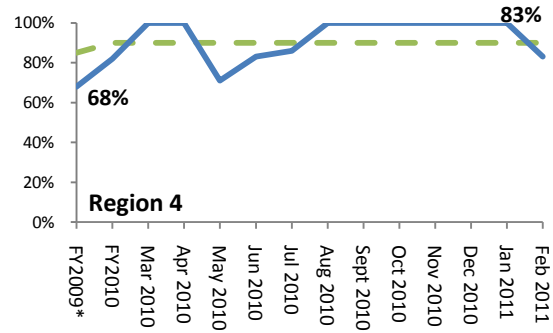
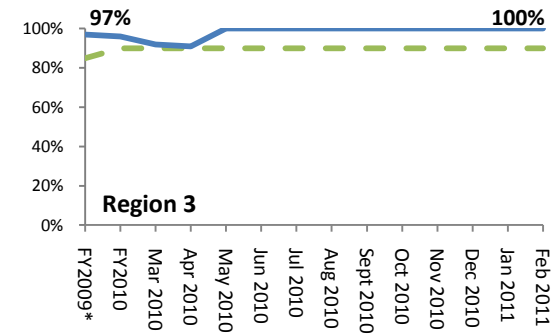
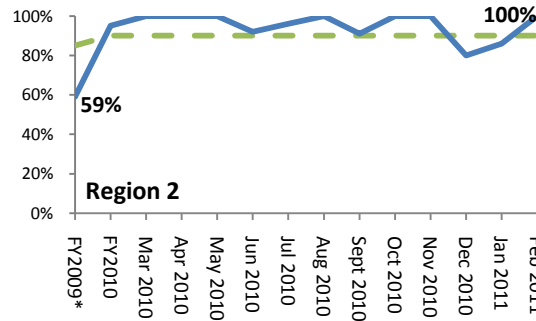
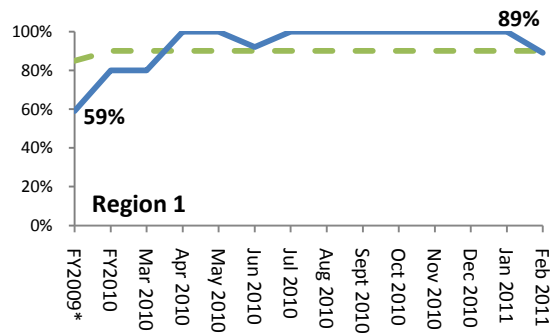
MEASURE DEFINITION: Children age 3 and under in out-of-home care will be referred to the Early Support for Infant and Toddlers Program within 2 workdays of identification of concerns about developmental delays from their CHET screens.

DATA NOTES: **1** *FY2009 was the first year administrative data was available to report on this outcome and covers Feb 1 – June 30, 2009 data due to the FamLink transition period. This period also marks the start of using a revised definition for CHET Screen “completion” criteria. **2** Population is based on children newly entering out of home care, in care 30 days or more, and under CA Placement and Care Authority that meet criteria for a CHET Screen to be completed, including completion of a developmental screening. (See Complete Data notes on page 30)

Early Support for Infant and Toddlers (ESIT) Program Referral within 2 Workdays

Children age 3 and under in out-of-home care will be referred to the Early Support for Infant and Toddlers (ESIT) Program within 2 workdays of identification of concerns about developmental delays from their CHET screen. (Mental Health, Goal 1, Outcome 4)

Regional Trends (Prior Years and Rolling 12 Months)



Children's Administration

Early Support for Infant and Toddlers (ESIT) Program Referrals within 2 Workdays

Children age 3 and under in out-of-home care will be referred to the Early Support for Infant and Toddlers (ESIT) Program within 2 workdays of identification of concerns about developmental delays from their CHET screen. (Mental Health, Goal 1, Outcome 4)

Measure definition	Percentage of children age 3 and under in out-of-home care with identification of concerns about developmental delays from their CHET Screens that are referred to the Early Support for Infant and Toddlers (ESIT) Program within 2 workdays.
Data source	Statewide CHET Database
Data supplier	Brenda Villarreal, Statewide CHET Program Manager, Children's Administration
Next update	June 2011
Frequency	Monthly
Data notes	<p>1 *FY2009 was the first year administrative data was available to report on this outcome and covers Feb 1 – June 30, 2009 data due to the FamLink transition period. This period also marks the start of using a revised definition for CHET Screen “completion” criteria.</p> <p>2 Population is based on children newly entering out of home care, in care 30 days or more, and under CA Placement and Care Authority that meet criteria for a CHET Screen to be completed, including completion of a developmental screening.</p> <p>3 To achieve compliance children identified with concerns about developmental delays from their CHET Screen need to be referred to the ESIT Program within 2 workdays or already be receiving ESIT program services.</p> <p>4 Children with identified concerns that are already receiving ESIT Program services are counted as compliant.</p> <p>5 Compliance with this outcome requires the statewide benchmark to be met. In addition, no region’s performance may be more than 10 percentage points lower than the statewide benchmark.</p>

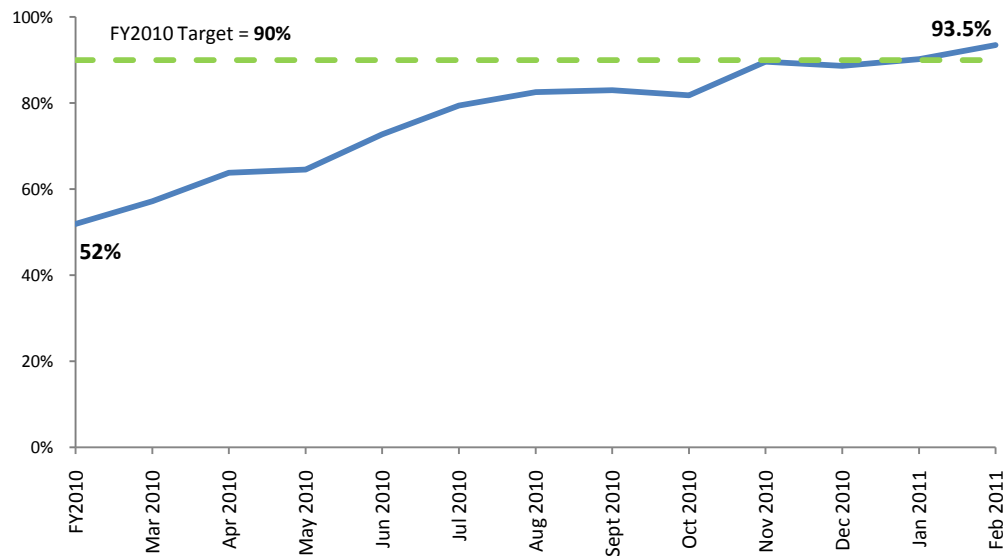
DATA

DATE	Statewide	TARGET	0-2 days	3-5 days		6-10 days		Over 10 days		Incomplete		Region 1	Region 2	Region 3	Region 4	Region 5	Region 6
				Percent	Count	Percent	Count	Percent	Count	Percent	Count						
FY2009*	72%	85%	129	3%	6	6%	10	5%	9	14%	25	59%	59%	97%	68%	59%	93%
FY2010	86%	90%	353	3%	12	2%	10	3%	14	6%	24	80%	95%	96%	82%	73%	88%
Mar 2010	86%	90%	38	0%	0	0%	0	5%	2	11%	5	80%	100%	92%	100%	60%	100%
Apr 2010	91%	90%	30	3%	1	0%	0	6%	2	0%	0	100%	100%	91%	100%	75%	100%
May 2010	96%	90%	48	2%	1	2%	1	0%	0	0%	0	100%	100%	100%	71%	100%	100%
Jun 2010	93%	90%	54	0%	0	3%	2	2%	1	3%	2	92%	92%	100%	83%	92%	100%
Jul 2010	95%	90%	37	3%	1	0%	0	3%	1	0%	0	100%	96%	100%	86%	100%	100%
Aug 2010	100%	90%	53	0%	0	0%	0	0%	0	0%	0	100%	100%	100%	100%	100%	100%
Sept 2010	98%	90%	47	0%	0	0%	0	2%	1	0%	0	100%	91%	100%	100%	100%	100%
Oct 2010	100%	90%	37	0%	0	0%	0	0%	0	0%	0	100%	100%	100%	100%	100%	100%
Nov 2010	100%	90%	31	0%	0	0%	0	0%	0	0%	0	100%	100%	100%	100%	100%	100%
Dec 2010	97%	90%	32	0%	0	0%	0	3%	1	0%	0	100%	80%	100%	100%	100%	100%
Jan 2011	96%	90%	26	4%	1	0%	0	0%	0	0%	0	100%	86%	100%	100%	100%	100%
Feb 2011	95%	90%	35	3%	1	3%	1	0%	0	0%	0	89%	100%	100%	83%	100%	100%

Shared Planning Meeting Focused on CHET Screen within 60 Days

A shared planning meeting focused on the CHET screening results will be held within 60 days of each child's entry into care. (Mental Health, Goal 1, Outcome 3)

Statewide Performance (FY2010 and Rolling 12 Months)



SUMMARY

- Performance for social workers holding a Shared Planning meeting focused on children's CHET Screen results within 60 days of entry into care was approximately 93% in February 2011.
- CA performance has steadily improved during the last year, up from approximately 57% in March 2010.
- Recognition to Regions 3, 4 and 5 for exceeding the 90% target the last four reporting months and to Regions 3 and 5 for 100% performance in February 2011.
- Continued use of the monthly FamLink management report, communication, follow-up to provide accountability, and ongoing data clean up are contributing to improved performance.
- Timely and thorough planning helps ensure the needs of children in out of home care are met. Reviewing and discussing CHET Screen results helps social workers, parents, caregivers, and age appropriate children/youth develop effective case plans.

ACTION PLAN

- Continue to use the FamLink Management report to monitor and analyze performance and identify and address improvement needs.
- As needed, provide staff in-service refresher training on the policy and practice expectations and how to document shared planning meeting information in FamLink.

DATA SOURCE: FamLink and Statewide CHET Database; supplied by Lisa Barber, Data Analyst, Children's Administration

MEASURE DEFINITION: A shared planning meeting (SPM) focusing on the CHET screening results will be held within 60 days of each child's entry into care.

DATA NOTES: **1** FY2010 is the first year administrative data was available to report on this outcome. **2** Population includes children newly entering out of home care during the fiscal year, in out-of-home care for 60 days or more, and under CA Placement and Care Authority who meet the criteria for a required CHET Screen. **3** To achieve compliance a shared planning meeting focused on CHET Screen results must be held within 60 days of the child entering out of home care and accurately documented in FamLink. (See complete Data Notes on page 33)

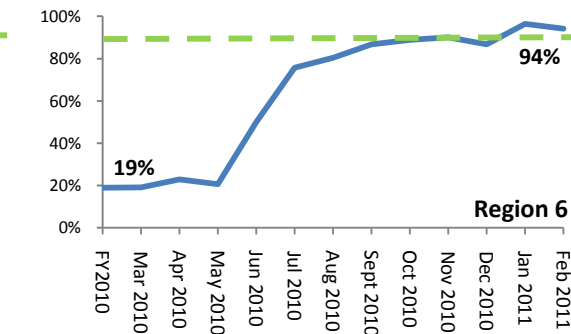
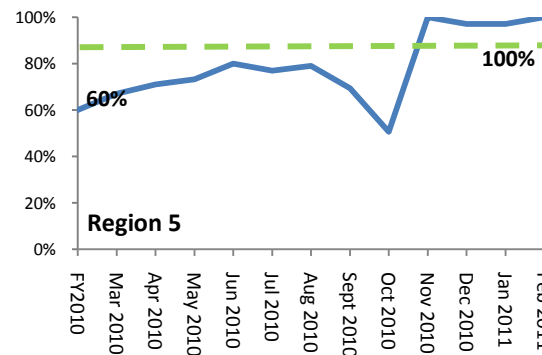
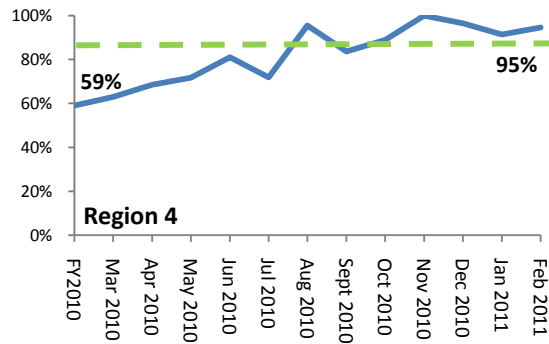
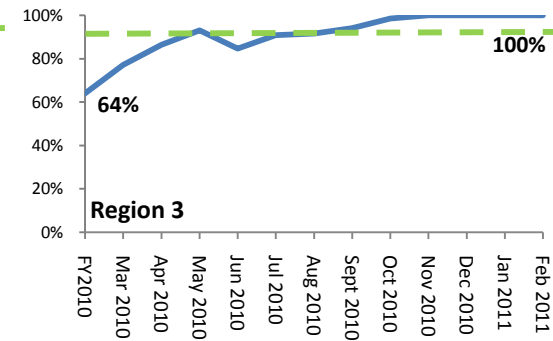
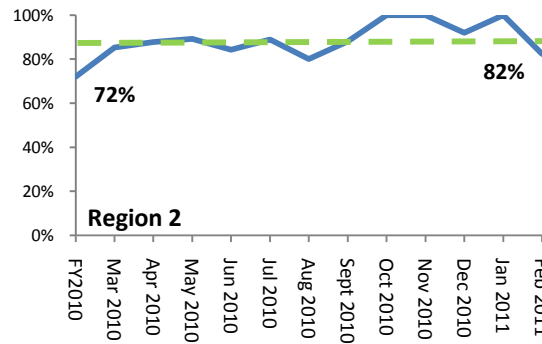
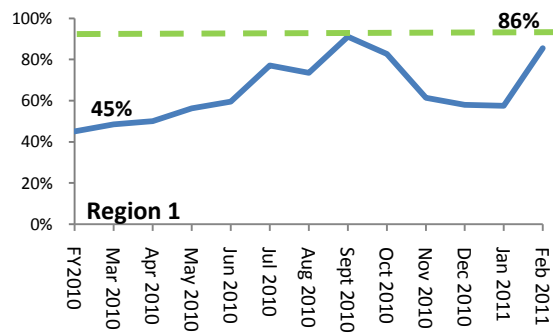
PERFORMANCE MEASURE

[TO DATA TABLE](#)

Shared Planning Meeting Focused on CHET Screen within 60 Days

A shared planning meeting focused on the CHET screen results will be held within 60 days of each child's entry into care. (Mental Health, Goal 1, Outcome 3)

Regional Trends (FY2010 and Rolling 12 Months)



Children's Administration

Shared Planning Meeting Focused on CHET within 60 Days

A shared planning meeting (SPM) focusing on the CHET screening results will be held within 60 days of each child's entry into care. (Mental Health, Goal 1, Outcome 3)

Measure definition	A shared planning meeting focused on the CHET screen results will be held within 60 days of each child's entry into care.
Data source	FamLink and Statewide CHET Database
Data supplier	Lisa Barber, Data Analyst, Children's Administration
Next update	June 2011
Frequency	Monthly
Data notes	<p>1 FY2010 is the first year administrative data was available to report on this outcome.</p> <p>2 Population includes children newly entering out of home care during the fiscal year, in out-of-home care for 60 days or more, and under CA Placement and Care Authority who meet the criteria for a required CHET Screen.</p> <p>3 To achieve compliance a shared planning meeting focused on CHET Screen results must be held within 60 days of the child entering out of home care and accurately documented in FamLink.</p> <p>4 September - October 2010 data was updated with the February 2010 monthly report to reflect the most current performance data available.</p> <p>5 In December 2010, the report methodology was changed to ensure all eligible meetings are included after discovering Shared Planning Meetings with the CHET Staffing check box marked were not captured when the Timeframe checkbox of "Other" was not also marked. July-September 2010 performance data was updated in December 2010, all previous months have less than a 4% change and will be accounted for in annual reports used to measure compliance.</p> <p>6 Several changes to the report methodology are pending to exclude a small number of records currently included in the population: (a) Exclude youth that turn 18 years old within 60 days of entering out of home care, and (b) Exclude children who return home on a Trial Return Home within 60 days of placement.</p> <p>7 The report continues to be refined as results are validated by program leads and staff in regions.</p> <p>8 Compliance with this outcome requires the statewide benchmark to be met. In addition, no region's performance may be more than 10 percentage points lower than the statewide benchmark.</p>

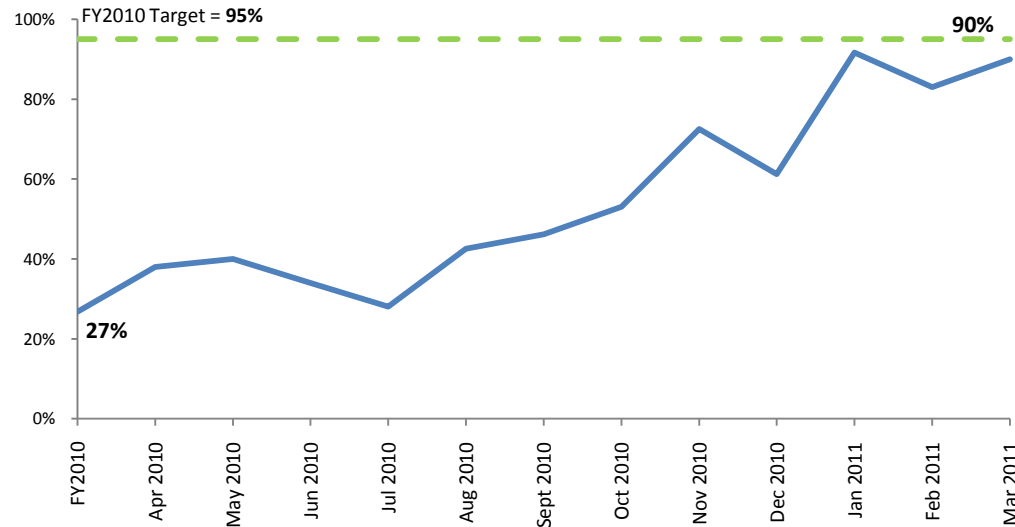
DATA

DATE	Statewide	TARGET	< 60 days	61-90 days		>90 days		Not Documented		Region 1	Region 2	Region 3	Region 4	Region 5	Region 6
				Percent	Count	Percent	Count	Percent	Count						
FY2010	51.9%	90%	1941	3.9%	145	7.2%	260	37.0%	1383	45%	72%	64%	59%	60%	19%
Mar 2010	57.2%	90%	215	4.5%	17	14.1%	53	24.2%	91	48%	85%	77%	63%	67%	19%
Apr 2010	63.8%	90%	236	4.1%	15	11.4%	42	20.8%	77	50%	88%	86%	68%	71%	23%
May 2010	64.6%	90%	279	7.2%	31	12.3%	53	16.0%	69	56%	89%	93%	72%	73%	21%
Jun 2010	72.7%	90%	301	6.5%	27	4.8%	20	15.9%	66	59%	84%	85%	81%	80%	50%
Jul 2010	79.5%	90%	259	4.9%	16	1.8%	6	13.8%	45	77%	89%	91%	72%	77%	76%
Aug 2010	82.6%	90%	294	6.5%	23	1.4%	5	9.6%	34	73%	80%	92%	95%	79%	80%
Sept 2010	83.0%	90%	313	2.9%	11	1.6%	6	12.5%	47	91%	88%	94%	84%	69%	87%
Oct 2010	81.8%	90%	247	2.0%	6	1.0%	3	15.2%	46	83%	100%	99%	89%	51%	89%
Nov 2010	89.6%	90%	198	2.3%	5	1.4%	3	6.8%	15	61%	100%	100%	100%	100%	90%
Dec 2010	88.6%	90%	265	3.3%	10	1.7%	5	6.4%	19	58%	92%	100%	96%	97%	87%
Jan 2011	90.2%	90%	244	1.8%	5	0.0%	0	8.8%	24	57%	100%	100%	91%	97%	96%
Feb 2011	93.5%	90%	329	2.6%	9	0.0%	0	4.0%	14	86%	82%	100%	95%	100%	94%

Youth Transition (Exit) Staffings

A multi-disciplinary staffing meeting will be held six months prior to a youth's exit from foster care to address issues related to transition to independence. (Services to Adolescents, Goal 2, Outcome 3)

Statewide Performance (FY2010 and Rolling 12 Months)



SUMMARY

- Performance for holding a multi-disciplinary transition staffing at least six months prior to a youth's exit from foster care to address youth's transition to independence was approximately 90% in March 2011.
- Recognition to Regions 1, 3 and 4 for exceeding the 95% benchmark and being the highest performers in March 2011 at 100%.
- Performance shows marked improvement over the past year; up from 28% in March 2010.
- The number of youth turning 17.5 years of age in a month is relatively small and can cause fluctuation in percentages and trend lines, particularly for regions.
- A monthly FamLink management report was published in August 2010 and is helping CA managers and staff monitor performance and target improvement activities.
- In September 2010, social workers began receiving email reminders when youth turn 17 years old to schedule a staffing.
- In October 2010, the policy and staffing form were updated to meet federal requirements and staff received in-service training.
- In November 2010, FamLink design changes were made to improve the Shared Planning Meeting page and strengthen fields used for administrative reporting.
- In November 2010, a quality assurance system was implemented with monthly reporting requirements to help ensure youth receive a Transition Staffing and Transition Plan prior to turning 17.5 years.

ACTION PLAN

- Continue to use the FamLink Management report to monitor and analyze performance and address improvement needs.
- Strengthen quality assurance tracking and reporting system to ensure youth receive a Transition Staffing, the staffing is timely and accurately documented in FamLink, and reasons for non-compliance are identified.
- Develop and implement an on-line FamLink Management report to provide ready access to performance data for this outcome.

DATA SOURCE: FamLink; supplied by Lee Doran, Lead Analyst, Children's Administration

MEASURE DEFINITION: A multi-disciplinary staffing meeting will be held six months prior to a youth's exit from foster care to address issues related to transition to independence.

DATA NOTES: 1 FY2010 is the first year administrative data was available to report on this outcome. 2 Population includes all youth in out-of-home care under CA Placement and Care Authority who were in care for at least 30 days and turned 17.5 years during the specified calendar month. 3 To achieve compliance the multi-disciplinary staffing meeting must have been held between the age of 17 years to 17.5 years or within 30 days of turning 17.5 years and be documented accurately in FamLink. 4 September - November 2010 data was updated with the February 2010 monthly report to reflect the most current performance data available and to correct an error in the September counts. 5 In December 2010 the report methodology was changed to address duplication of some of the youth when multiple staffings occur. (See complete Data Notes on page 36)

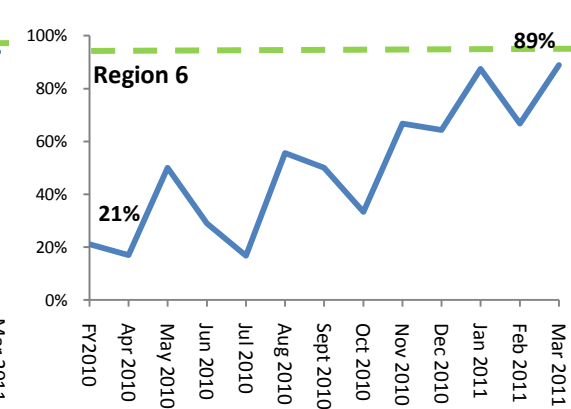
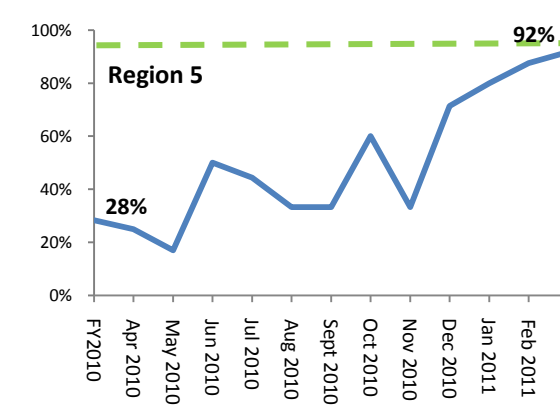
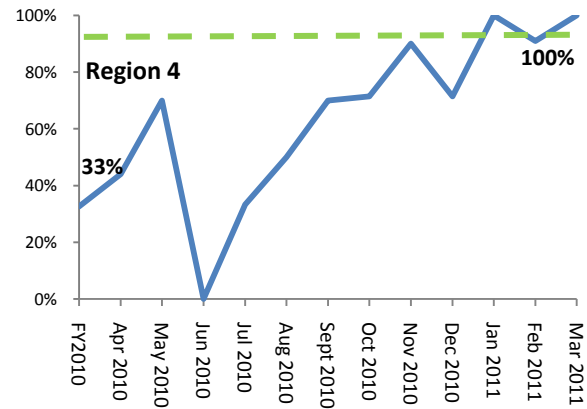
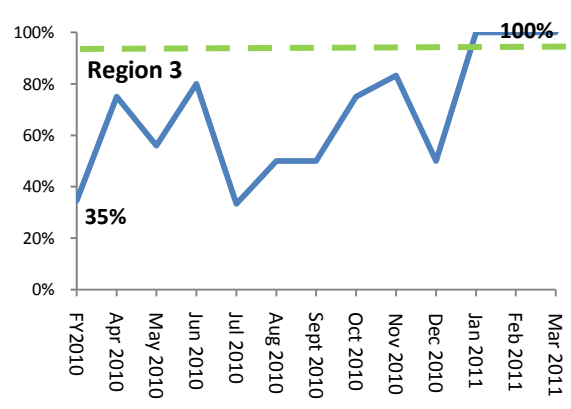
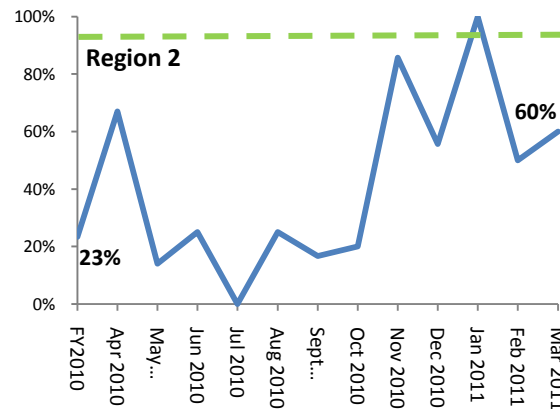
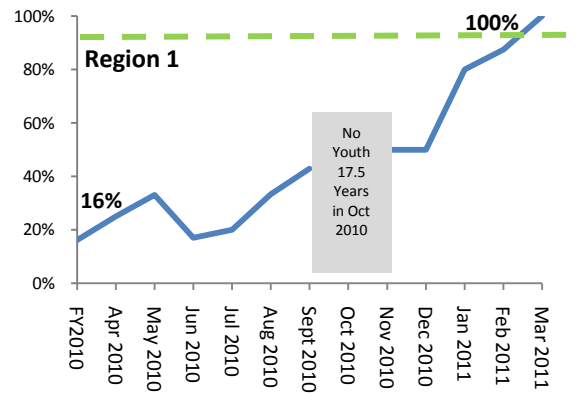
PERFORMANCE MEASURE

[TO DATA TABLE](#)

Youth Transition (Exit) Staffings

A multi-disciplinary staffing meeting will be held six months prior to a youth's exit from foster care to address issues related to transition to independence. (Services to Adolescents, Goal 2, Outcome 3)

Regional Trends (FY2010 and Rolling 12 Months)



Children's Administration

Youth Transition (Exit) Staffings

A multi-disciplinary staffing meeting will be held six months prior to a youth's exit from foster care to address issues related to transition to independence. (Services to Adolescents, Goal 2, Outcome 3)

Measure definition	Percentage of multi-disciplinary staffing meeting that are held at least six months prior to a youth's exit from foster care to address issues related to their transition to independence.
Data source	FamLink run date 5/12/11
Data supplier	Lee Doran, Lead Analyst, Children's Administration
Next update	June 2011
Frequency	Monthly
Data notes	<p>1 FY2010 is the first year administrative data was available to report on this outcome.</p> <p>2 Population includes all youth in out-of-home care under CA Placement and Care Authority who were in care for at least 30 days and turned 17.5 years during the specified calendar month.</p> <p>3 To achieve compliance the multi-disciplinary staffing meeting must have been held between the age of 17 years to 17.5 years or within 30 days of turning 17.5 years and be documented accurately in FamLink.</p> <p>4 September - November 2010 data was updated with the February 2010 monthly report to reflect the most current performance data available and to correct an error in the September counts.</p> <p>5 In December 2010 the report methodology was changed to address duplication of some of the youth when multiple staffings occur.</p> <p>6 In November 2010 the methodology for this report was revised to count as compliant staffings between the age of 17 years and 17.5 years and exclude staffings that occur prior to 17 years (per Children's Administration policy) and identify staffings that occur within 90 days of turning 18 years (Federal standard).</p> <p>7 The report continues to be refined as results are validated by program leads and staff in regions.</p> <p>8 The number of children in care more than 30 days that turn 17.5 years each month, statewide and particularly by region, is a limited number and should be interpreted with caution.</p> <p>9 Compliance with this outcome requires the statewide benchmark to be met. In addition, no region's performance may be more than 10 percentage points lower than the statewide benchmark.</p>

DATA

DATE	Statewide Rate	TARGET	Compliant Staffings	Staffing Held Before 17 or Between 17.6 - 17.8 Years		Staffing Held within 90 Days of 18 Years		No Staffing Documented		Total Non-Compliance		Total Youth 17.5 Years	Region 1	Region 2	Region 3	Region 4	Region 5	Region 6
				Percent	Count	Percent	Count	Percent	Count	Percent	Count							
FY2010	26.8%	95%	128	19%	91	22%	103	33%	156	73%	350	478	16%	23%	35%	33%	28%	21%
Apr 2010	38.0%	95%	13	9%	3	18%	6	35%	12	62%	21	34	25%	67%	75%	44%	25%	17%
May 2010	40.0%	95%	18	7%	3	12%	5	37%	16	56%	24	45	33%	14%	56%	70%	17%	50%
Jun 2010	34.0%	95%	11	16%	5	7%	2	42%	13	65%	20	32	17%	25%	80%	0%	50%	29%
Jul 2010	28.1%	95%	9	9%	3	16%	5	47%	15	72%	23	32	20%	0%	33%	33%	44%	17%
Aug 2010	42.6%	95%	20	13%	6	15%	7	30%	14	57%	27	47	33%	25%	50%	50%	33%	56%
Sept 2010	46.2%	95%	18	21%	8	18%	7	15%	6	54%	21	39	43%	17%	50%	70%	33%	50%
Oct 2010	53.1%	95%	17	9%	3	13%	4	25%	8	47%	15	32		20%	75%	71%	60%	33%
Nov 2010	72.5%	95%	29	15%	6	3%	1	10%	4	28%	11	40	50%	86%	83%	90%	33%	67%
Dec 2010	61.2%	95%	30	18%	9	2%	1	18%	9	39%	19	49	50%	56%	50%	71%	71%	64%
Jan 2011	91.7%	95%	33	0%	0	3%	1	6%	2	8%	3	36	80%	100%	100%	100%	80%	88%
Feb 2011	83.0%	95%	39	4%	2	0%	0	13%	6	17%	8	47	88%	50%	100%	91%	88%	67%
Mar 2011	90.0%	95%	36	5%	2	0%	0	5%	2	10%	4	40	100%	60%	100%	100%	92%	89%